

How to measure the area of your home

Accurate measurements of your home ensure you buy the correct amount of insulation and your rebate is accurate. Measure everything in inches and then divide by 144 to get the area in square feet. All calculations for your Home Insulation Program rebate should be in square feet.

Wear protective equipment and clothing when working with insulation – check with your manufacturer or supplier for safety instructions. Take precautions if working in an area that contains hazardous materials (e.g. asbestos or lead).

Calculate attic area

Step 1

Measure the outside of your home.

Step 2

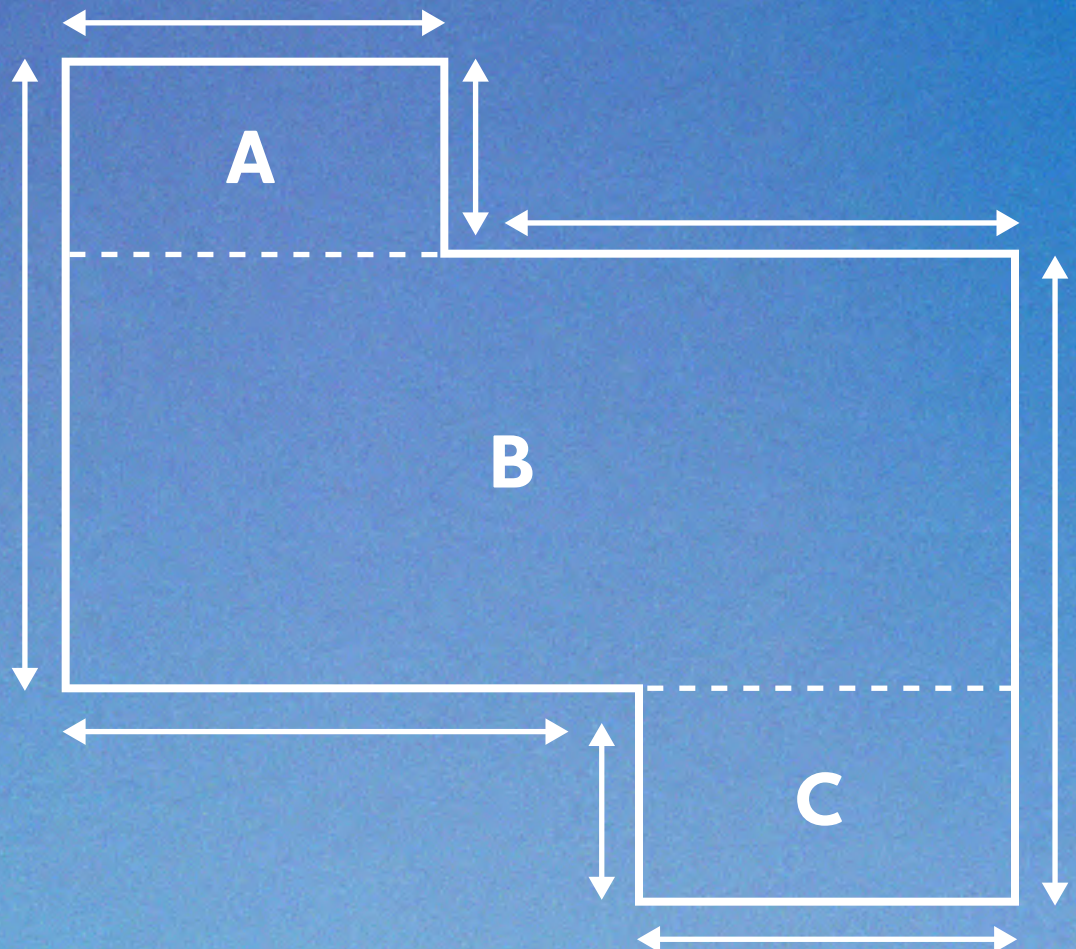
The interior attic space may differ (e.g., additions, varying levels of insulation). Separate into smaller spaces from the largest area.

Step 3

Multiply the length and width of each area

Step 4

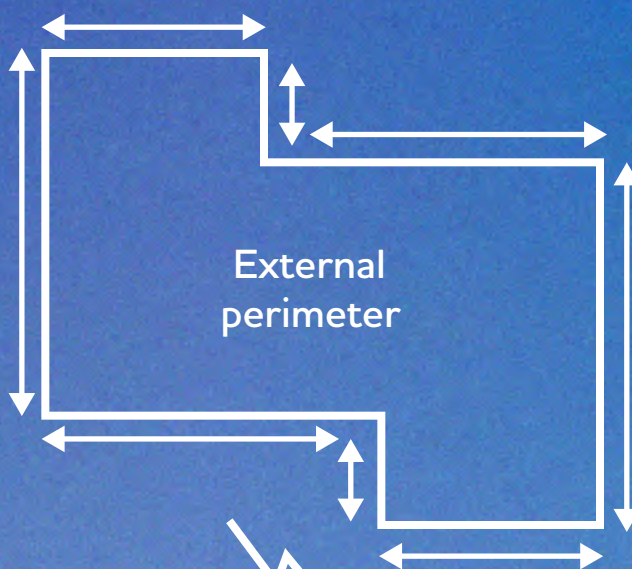
$(A + B + C) \div 144 = \text{total square footage}$



Calculate your wall cavity/exterior wall area

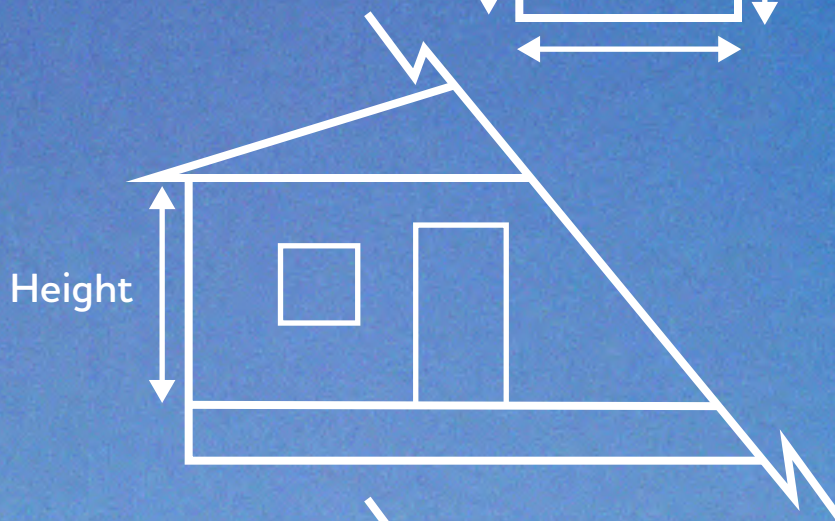
Step 1

Measure the outside of your home.



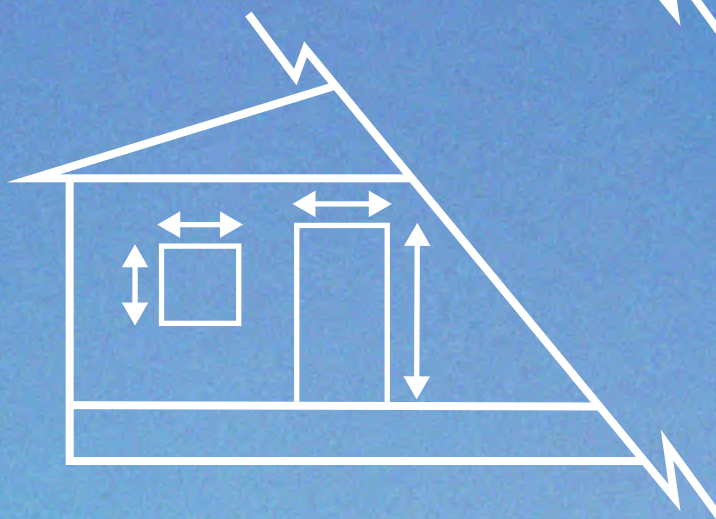
Step 2

Measure the height of the walls from the floor to the ceiling. If you own a multi-storey home, measure from the floor to the ceiling of the top storey.



Step 3

Measure the length and width of all exterior windows and doors.



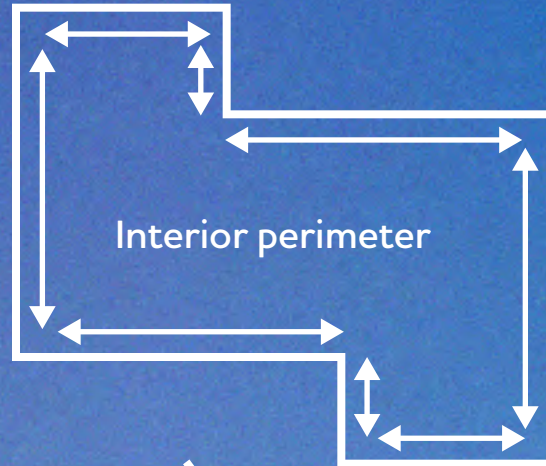
Step 4

$((\text{Exterior perimeter} \times \text{height}) - (\text{window and door area})) \div 144 = \text{total square footage}$

Calculate your basement/crawlspace area

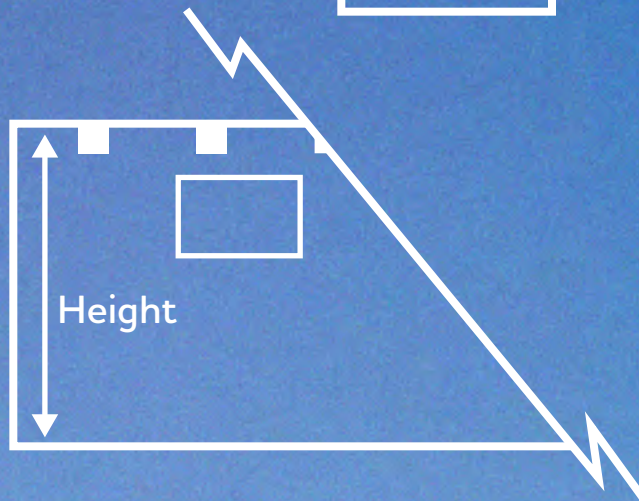
Step 1

Measure the inside of your home.



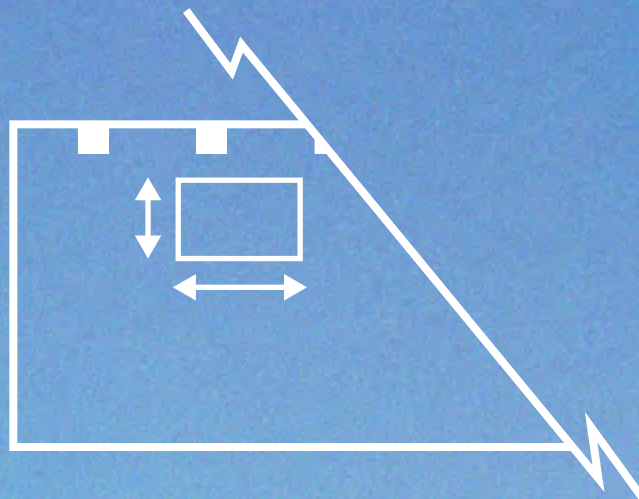
Step 2

Measure the entire perimeter. Measure the height of the walls from the floor to the underside of the subfloor.



Step 3

Measure the length and width of all exterior windows and doors.



Step 4

$((\text{Interior perimeter} \times \text{height}) - (\text{window and door area})) \div 144 = \text{total square footage}$

Address of home

