

## Informative Note: 64-0

### Common Solar Photovoltaic System Labels

---

Issue Date: February 10, 2017

Based on Manitoba Electrical Code (2015) 12<sup>th</sup> edition

This informational sheet is designed to help you install the most common solar photovoltaic system labels in accordance to the standards set by the 12th edition of the Manitoba Electrical Code 2015 and is not intended as an exhaustive list.

Every effort has been made to ensure the accuracy of the information being provided. However, in the event of a discrepancy between this informative note and the governing Manitoba Electrical Code, The Manitoba Electrical Code shall take precedence.

Remember, the Manitoba Electrical Code is constantly being updated. Be sure to familiarize yourself with the latest code requirements before you begin your installation.

All solar photovoltaic labels are required to be lamacoids, red background with white lettering.

#### 1 DC disconnect - 64-200 (1) - PV output circuit at an accessible location

PV SYSTEM DC DISCONNECT	
OPERATING CURRENT:	<input type="text"/>
OPERATING VOLTAGE:	<input type="text"/>
MAXIMUM SYSTEM VOLTAGE:	<input type="text"/>
SHORT CIRCUIT CURRENT:	<input type="text"/>

## Informative Note: 64-0

### Common Solar Photovoltaic System Labels

---

- 2 DC combiners, DC junction boxes, DC disconnects and inverters – 64-066 (1) (c) (Ungrounded systems only)



(VERBATIM PER APPENDIX B)

- 3 Inverters and equipment fed from two sources - 14-414 (3) – one for each source disconnect or one label on equipment indicating multiple disconnects must be opened



- 4 AC disconnects - 64-060 (10) & 84-024 (1) (i) – Inverter, utility and isolation AC disconnects



(VERBATIM PER APPENDIX B)

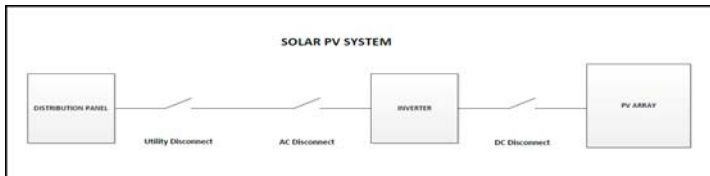
- 5 All PV interactive points with other sources - 64-072 - AC disconnects for inverters, panelboards, splitters etc.



## Informative Note: 64-0

### Common Solar Photovoltaic System Labels

#### 6 Meter location and service box - diagram - 64-074 (3)

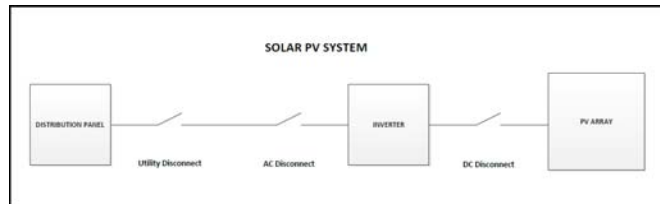


#### 7 Backfed breaker - 64-112(4) (b) (iii) - Do not relocate overcurrent device



(VERBATIM PER APPENDIX B)

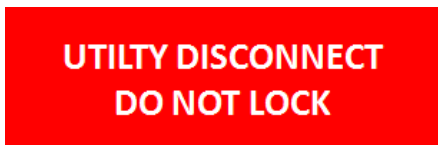
#### 8 Utility disconnect - 84-030 (1) & (2) - warning & diagram (will accept diagram located on an adjacent meter socket)



#### 9 Meter socket 84-030 & inspection notice (provide location of utility disconnect when permitted to be not adjacent)



#### 10 Utility disconnect – 84-024 (1) (J)



(VERBATIM)

