

Future work at Slave Falls Generating Station

Engagement summary

Manitoba Hydro is planning new work on the concrete structures at Slave Falls Generating Station that will likely require work over multiple years and may involve a 1 to 2 metre (about 3 to 6 feet) drop in water level on a 10-kilometre stretch of the Winnipeg River. To learn more, visit www.hydro.mb.ca/slavefalls.

This summer, those who live along or use the waterway were invited to participate in an online survey to provide feedback on the potential effects of any work involving lowered water levels. This input will inform our work plan, which we expect to have an update on in spring 2021. The following is a look at some of the key insights from the survey.

Key themes

Access to waterway

The local boat launch and private docks are common access points. Reduced access to shoreline and difficulty launching boats or storing them over winter are common concerns.



Recreational activities

Boating, swimming, fishing, and canoeing/kayaking are most common. Users raised concerns about navigation safety, fewer recreational areas, dangerous boating conditions, and impacts to the aquatic ecosystem.



Traditional land & resource use

Users raised concerns about hunting, fishing, trapping, and cultural and heritage resources along the shoreline, and also suggested water regime and traditional knowledge studies.



Open water season

Recreation and cottaging are most common in the open water season. If the water needs to be lowered, there is strong support for this to occur in winter only, when overall impacts are less.



Key findings

Shoreline infrastructure

98% of residents have shoreline infrastructure, such as docks, stairways or ramps, that could be affected by lower water.

River-based water system

95% of residents have a river-based water system that could be affected by lower water, especially in the open water season.

Vegetation & wildlife habitat

80% of respondents who use the land for traditional use (or 4 out of 56 total) have vegetation or wildlife habitat concerns.

Recreational use

79% of recreational users say their activities would be impacted by lower water, especially in the open water season.

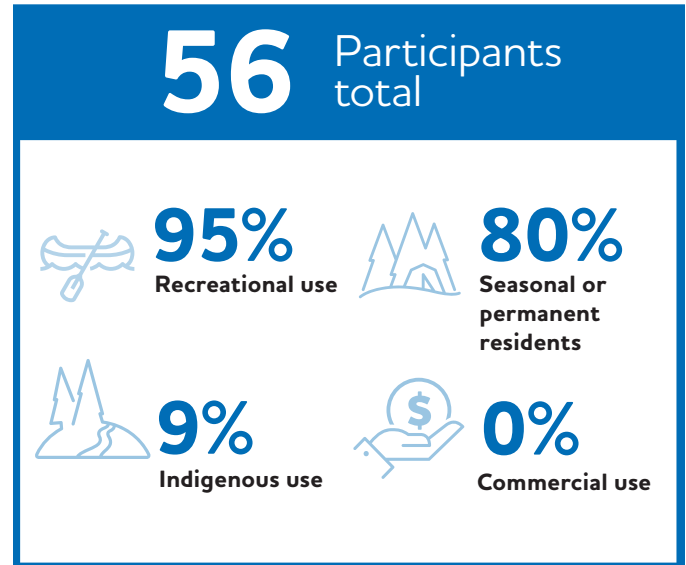
Seasonal preference

66% of respondents would prefer a drop in water level (if needed) in winter only, even if it has to be over multiple years.

For more information:

WCE@hydro.mb.ca
204-360-3505
www.hydro.mb.ca/slavefalls

Available in accessible formats upon request.



Other engagement & studies

A preliminary assessment of docks, ramps and boathouses along the shoreline was completed to identify modifications to help maintain waterway access for residents and other users should a drop in water level be necessary.

A meeting was also held with the local MLA and leadership of Pointe du Bois and Whiteshell Cottagers Associations to provide a tour of Slave Falls and discuss future work at the station.