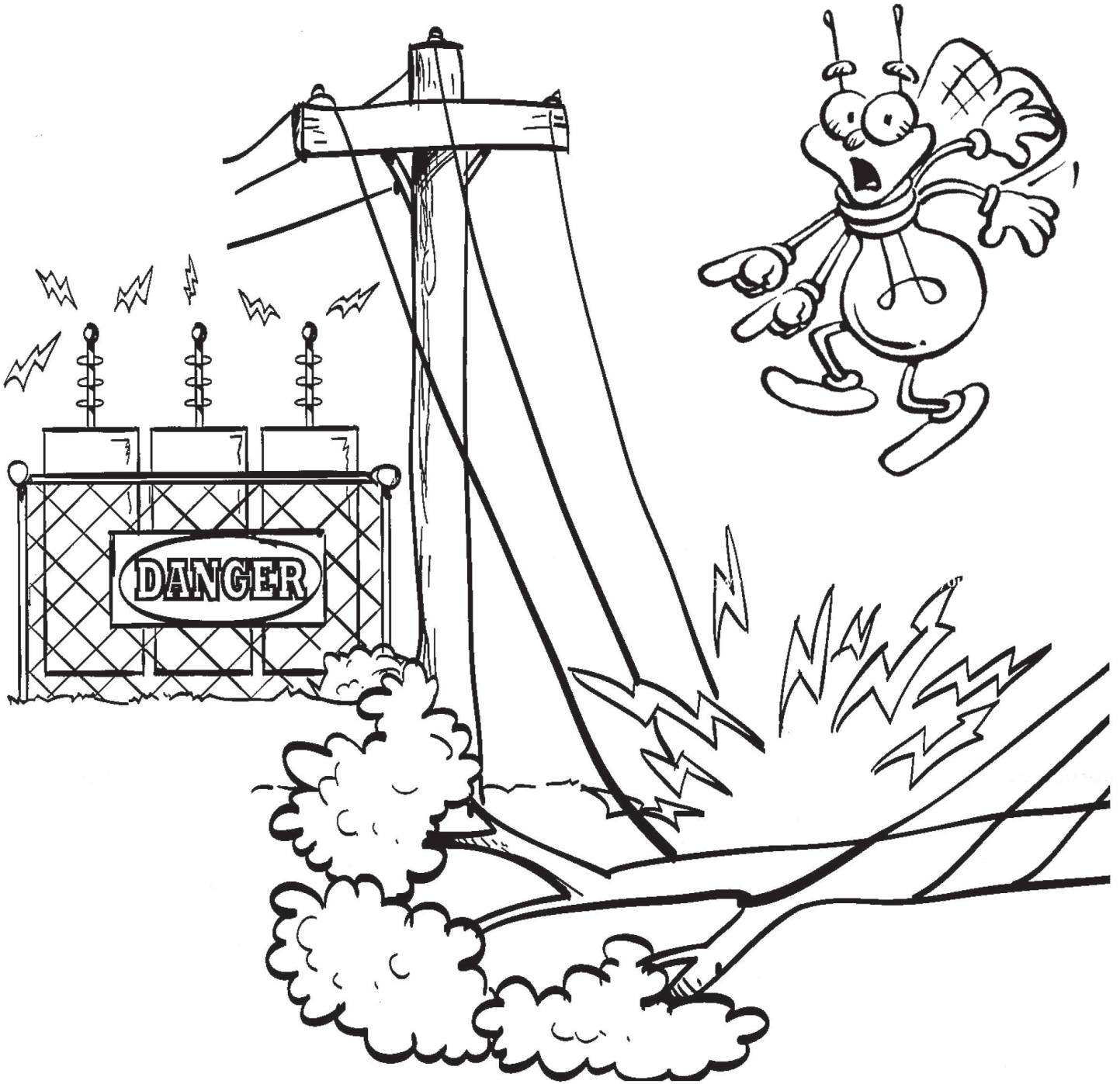


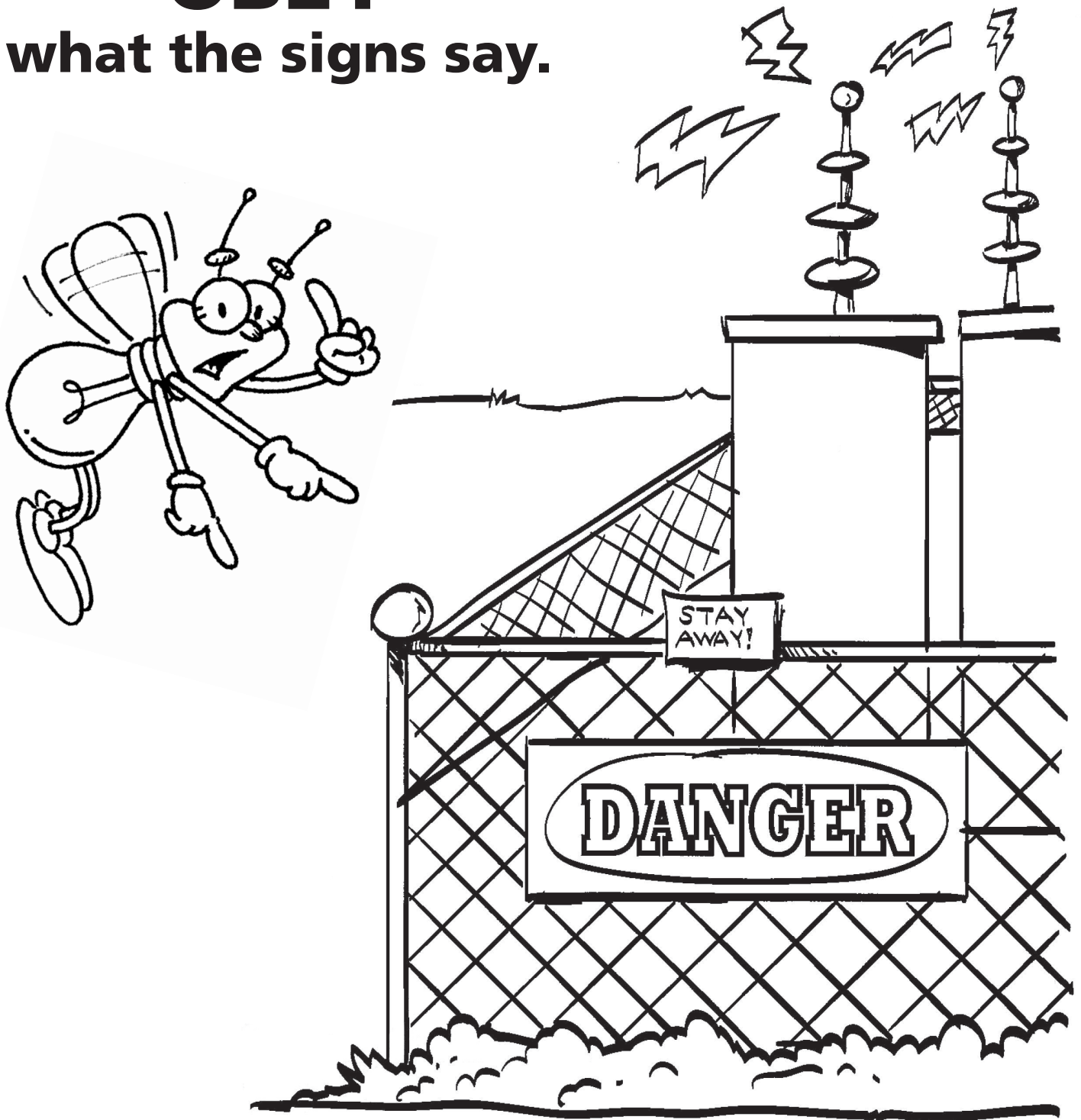
**NEVER** go near  
downed power lines  
or substations.



[hydro.mb.ca](http://hydro.mb.ca)

 **Manitoba  
Hydro**

You've got to  
**OBEY**  
what the signs say.

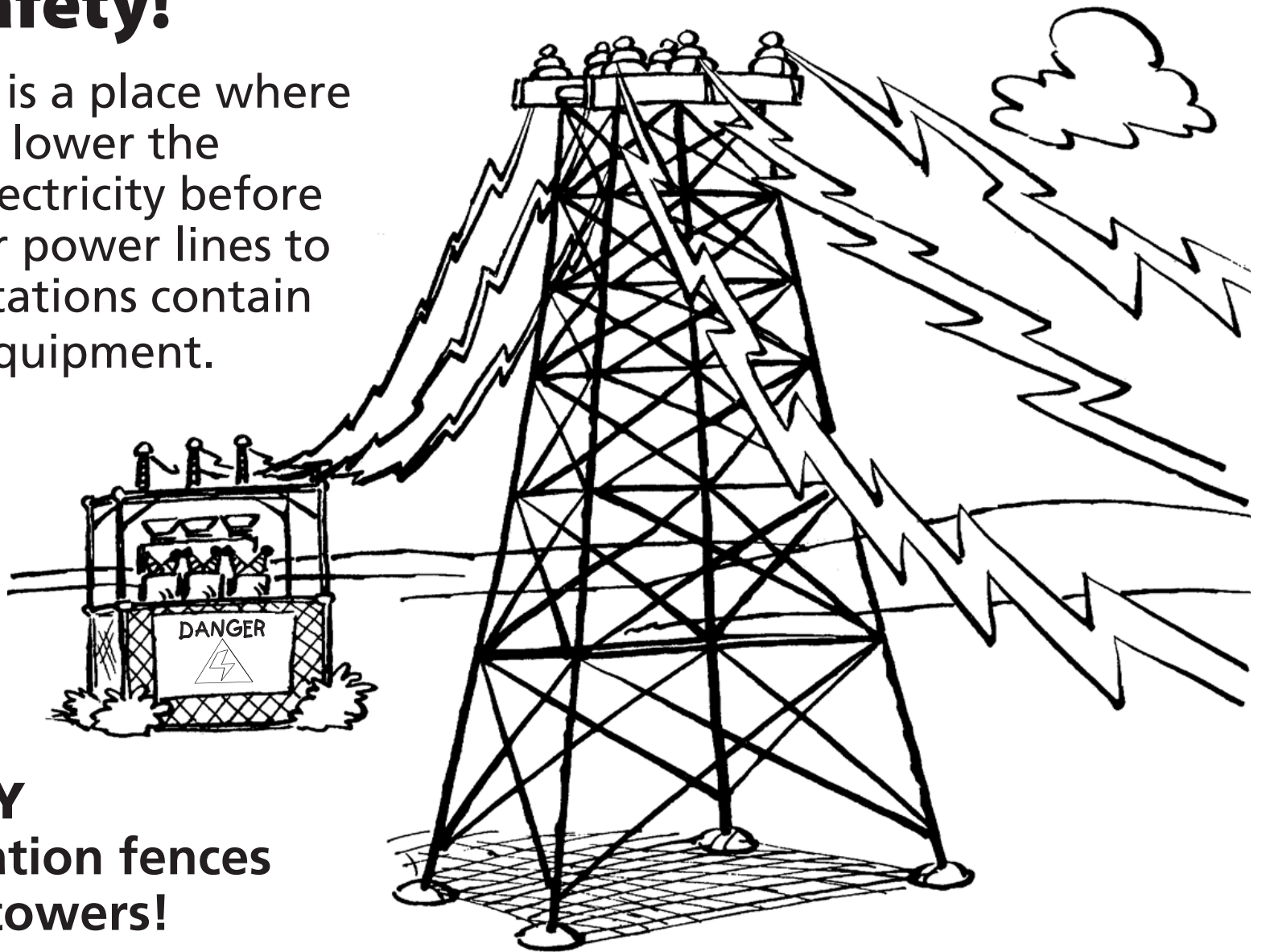


[hydro.mb.ca](http://hydro.mb.ca)

 **Manitoba  
Hydro**

# Think Safety!

A substation is a place where transformers lower the voltage of electricity before it is sent over power lines to homes. Substations contain dangerous equipment.



**STAY AWAY**  
from substation fences  
and utility towers!



# SAFE KITE-FLYING RULES

**1**

Always fly your kite far away from powerlines.

**2**

Always use dry string... not wire or anything metallic.

**3**

Always fly your kite on days when there is no rain.

**4**

Always use wood and paper in your kite... nothing metallic!

**5**

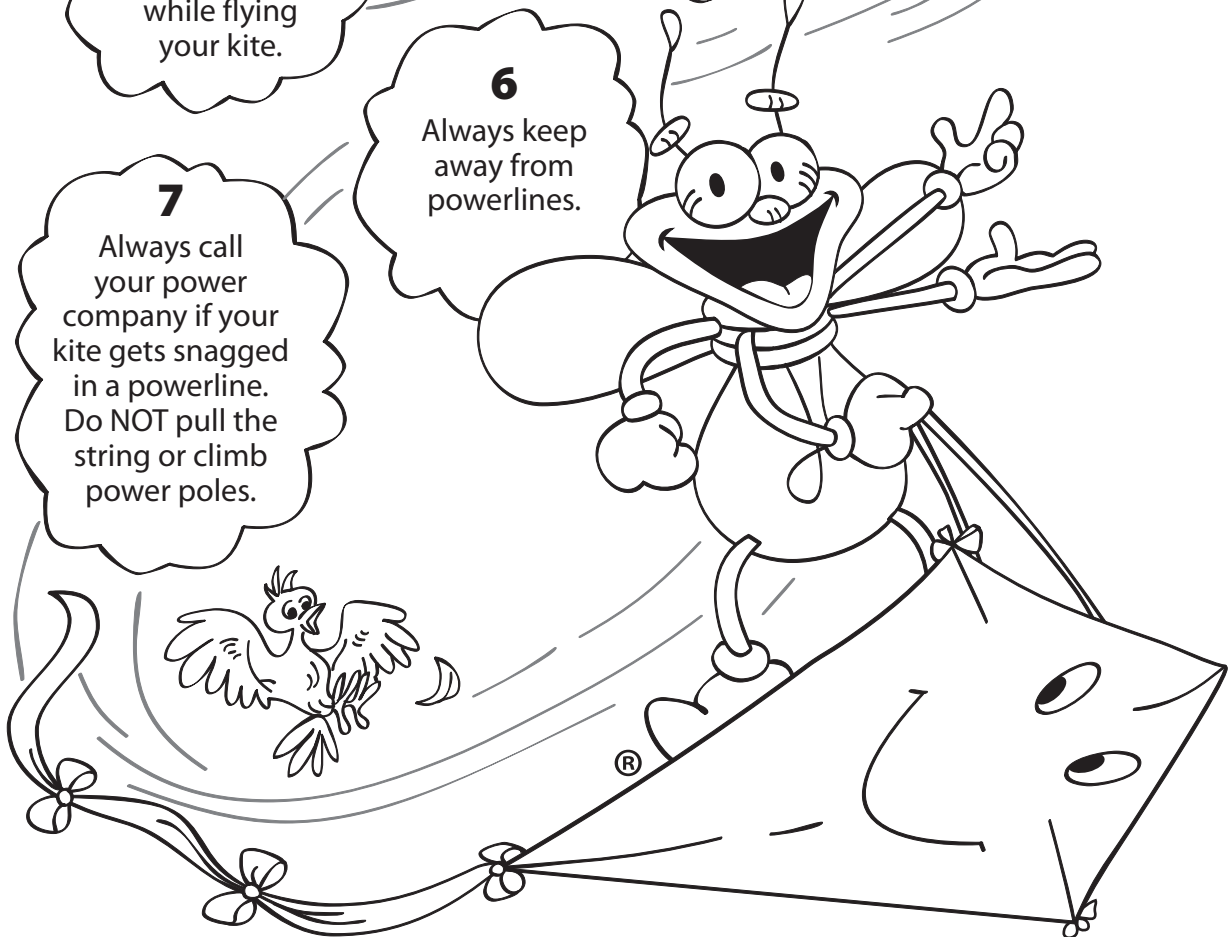
Always avoid busy streets and highways while flying your kite.

**6**

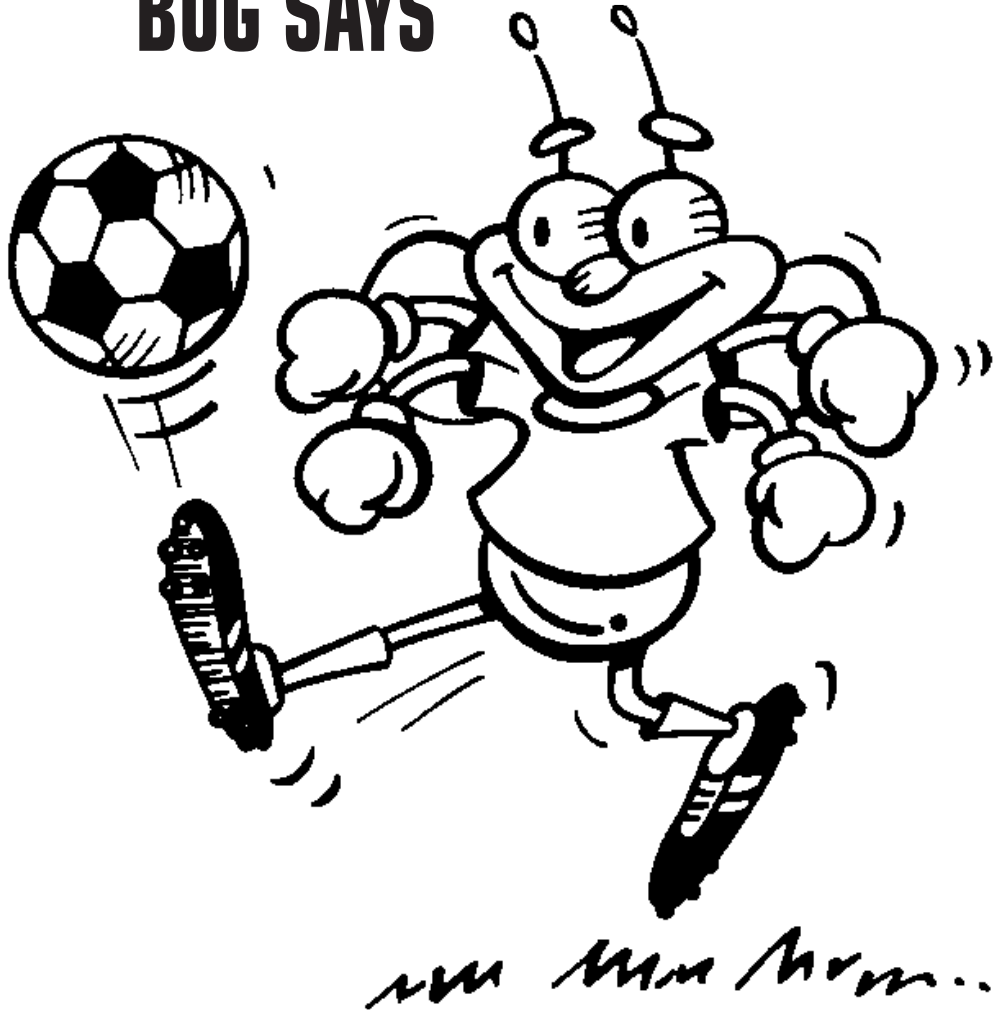
Always keep away from powerlines.

**7**

Always call your power company if your kite gets snagged in a powerline. Do NOT pull the string or climb power poles.

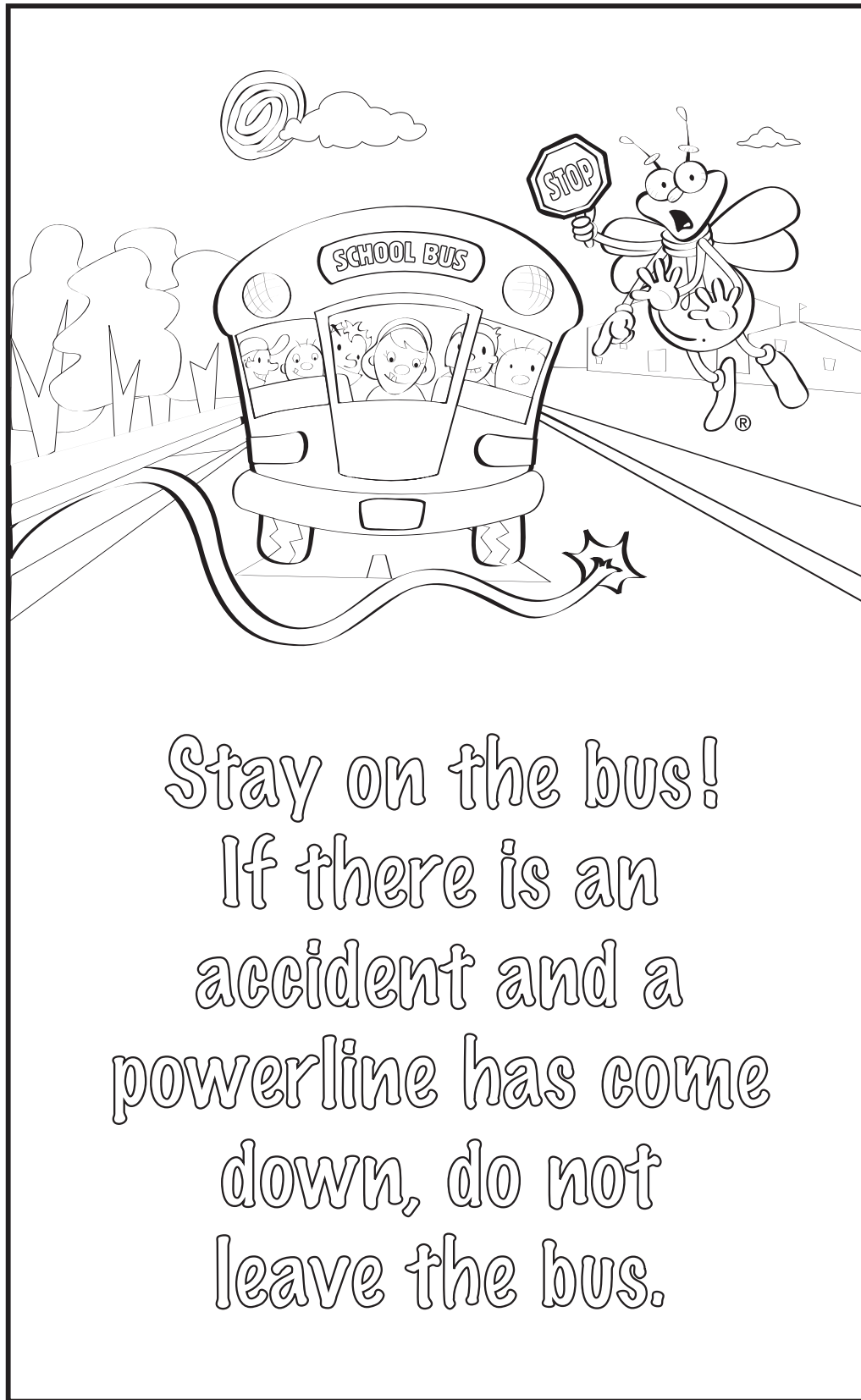


**LOUIE  
THE LIGHTNING  
BUG SAYS**



**HAVE A** *Safe* **SUMMER**

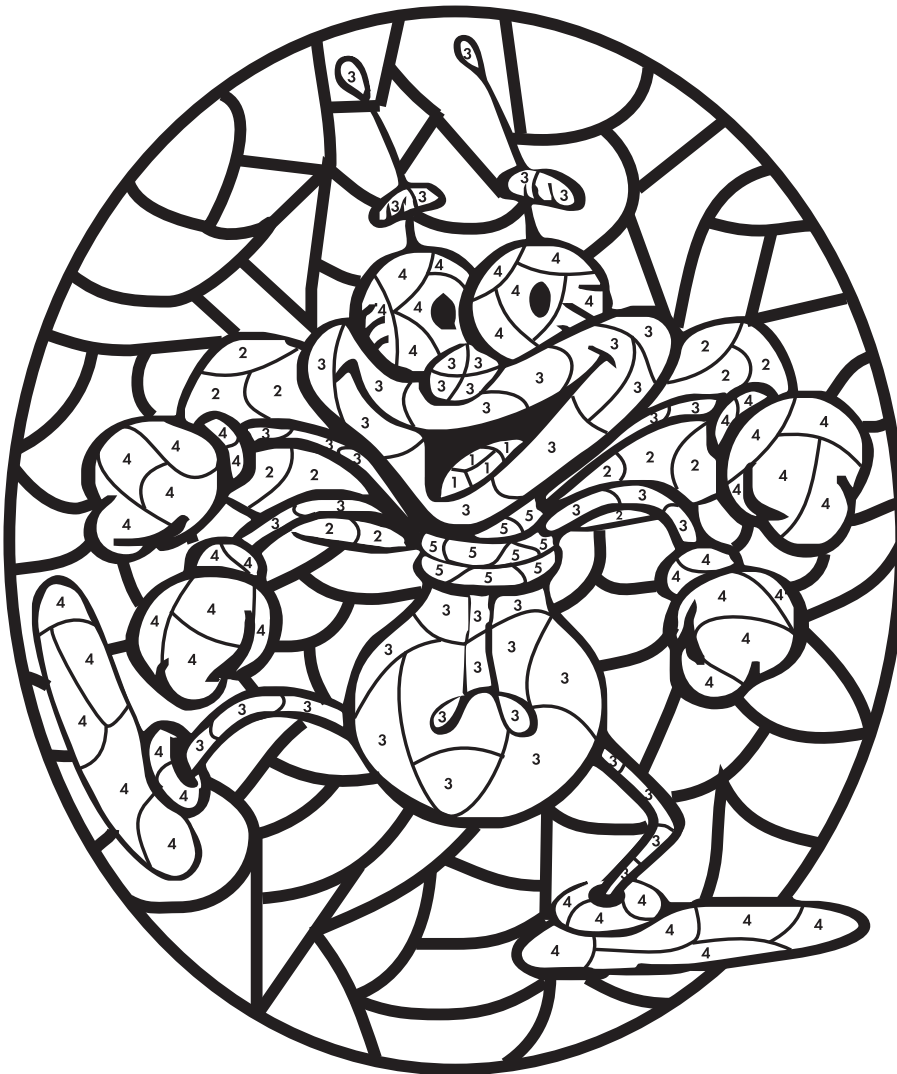




Stay on the bus!  
If there is an  
accident and a  
powerline has come  
down, do not  
leave the bus.

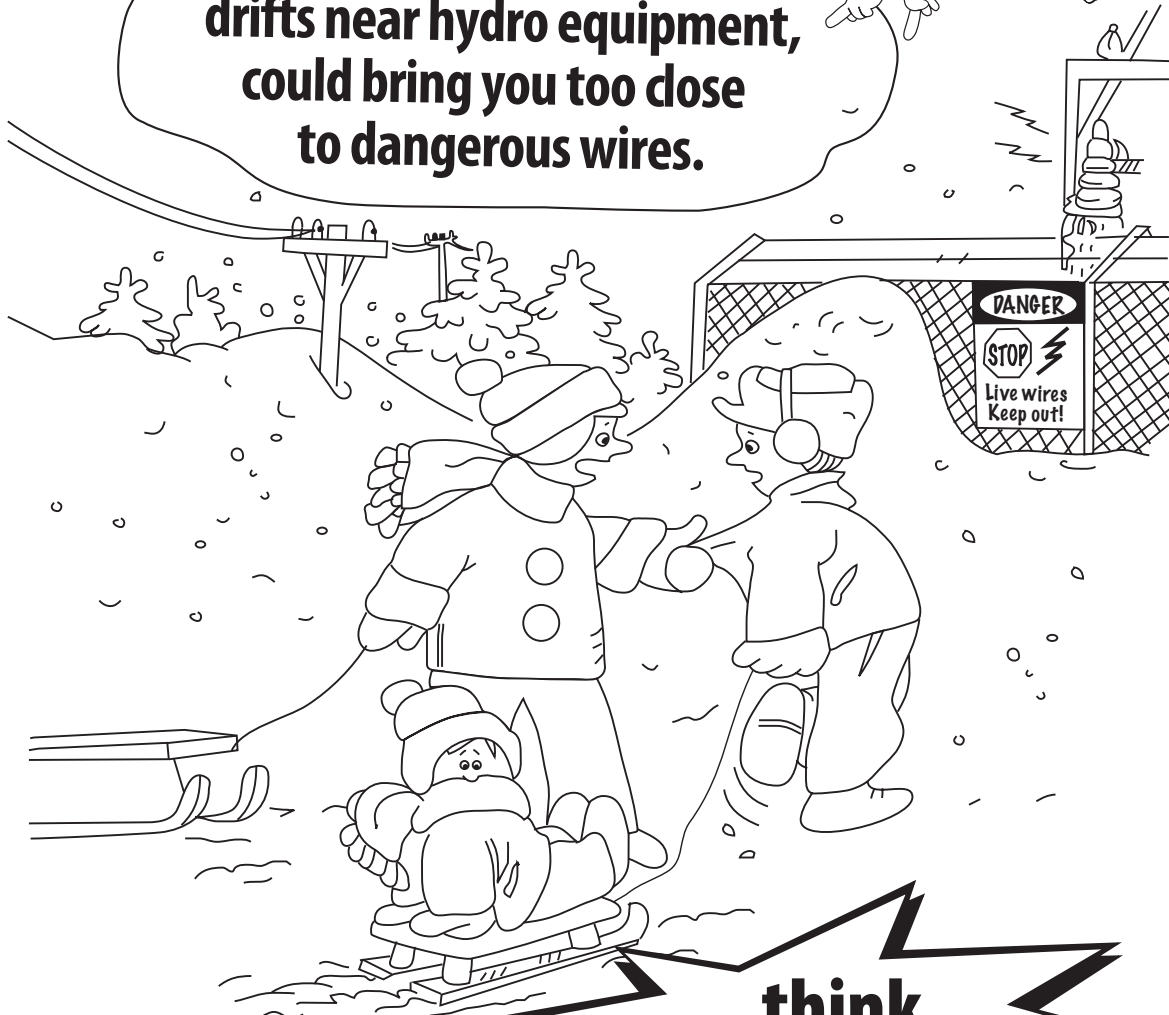
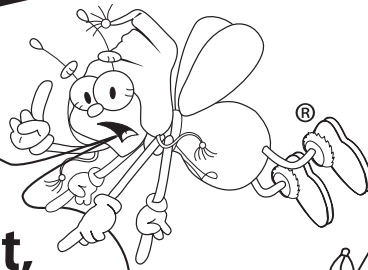
# COLOUR BY NUMBER TO FIND YOUR HIDDEN FRIEND

1-RED 2-GREEN 3-YELLOW 4-WHITE 5-GREY



# Louie says

**Playing on high snow drifts near hydro equipment, could bring you too close to dangerous wires.**



**Always play  
in a safe place.**

**think  
Safety First!**



# *Play Safe*

## **ALL YEAR!**



[hydro.mb.ca](http://hydro.mb.ca)

 **Manitoba  
Hydro**