



Requirements for Residential Service

Service Points

In most residential developments, the underground services (electrical, natural gas, telephone and cable) to new houses are installed at the same time with all service points installed closely together. Like many things in new house construction, there are standards and codes that apply to the service points and which must be met to provide a safe installation that can be safely maintained in the future.

Manitoba Hydro has developed several service point installation designs to suit different situations. As shown in Figures 1 the preferred service points are on the side of the house starting immediately on the front corner.

Pre-serviced Lots

Provision for the future connection of services to new houses are made when the electrical, gas and communication mains are installed for the development. Service stubs that will be extended to the house are left in the ground for future connection to the new house. The house service point must match the location of the service stubs (right or left side of the lot). All customer's electrical equipment including communication must be roughed in prior to Manitoba Hydro's contractor installing the underground services. Construction areas are busy places with many contractors working at the same time and often with piles of construction materials, waste materials or fill. The services are trenched between the mains at the street and the service point and this area must be within 6" (150 mm) of finished grade and clear of any materials that would prevent an installation.

A required 2 meter utility space and restricted area is a requirement for electrical, gas and communications. The typical meter layout would be the preferred method of providing all services. Drawings and requirements for the typical meter layout are shown on Figure1. The compact service points would be an alternative option. Drawings and requirements for the compact service points are shown on Figures 3 & 4. For houses built on larger properties where the side lot is more than 2000 mm, there may be some flexibility in the location of the service points. Please contact the local Energy Services Coordinator for further information.

If Separation Requirements Cannot be Met – Non Preferred layout

The minimum separation requirements for the installation of the gas service are identified on Figure 2. **Upon approval**, there are three options if the available space on the side of the house is not available or suitable for the service point installations:

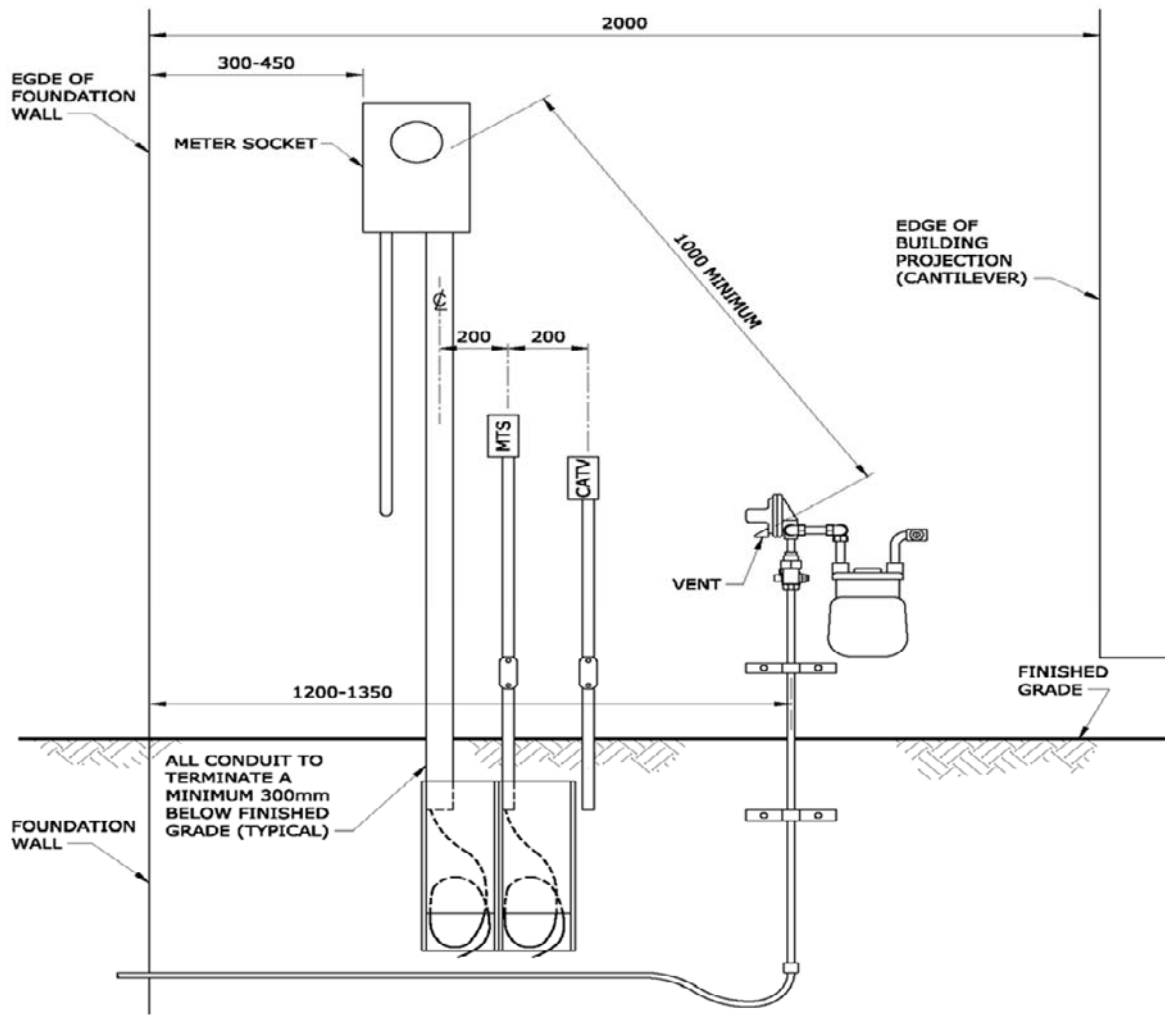
- It may be possible to install a special low vent regulator or extend vent piping to accommodate venting conflicts. There is a charge of \$400 plus GST if this is required. **Manitoba Hydro will be conducting a pilot program which will be waiving the \$400 plus GST additional charge. This pilot program will be reviewed March 2021, and at that time it will be determined if this will be the**

permanent resolution.

- Installation of the service points on the front of the building.
- Installation of the gas and electric service point remote from the building. The builder is responsible for the provision of the remote service facilities, and to extend the services from this remote location to the building. The home owner is the owner of these remote service points and will be responsible for the costs and any work needed to maintain these service points in acceptable conditions for the life of the house.

Please note that non-preferred installation requirements may require additional time to coordinate and install.

TYPICAL METER LAYOUT



NOTES:

1. MINIMUM SEPARATION FROM BOTTOM OF VENT TO METER GLASS, AND FROM EDGE OF FOUNDATION TO START OF CANTILEVER MUST BE PROVIDED. ALL OTHER DIMENSIONS ARE NOMINAL (PLUS/MINUS) TO SUIT SITE CONDITIONS.
2. A MINIMUM 1000mm CLEARANCE IS REQUIRED BETWEEN THE METER SOCKET BASE AND THE PROPERTY LINE.
3. DIMENSIONS SHOWN ARE MILLIMETRES.
4. LEFT SIDE LAYOUT IS SIMILIAR.
5. LOCATION OF THE COMMUNICATION SERVICE POINTS CAN BE SWITCHED WITH THE ELECTRIC SERVICE POINT TO SUIT SITE REQUIREMENTS.

Figure 1



Figure 1A

Clearance from Natural Gas Regulator Vent

This standard identifies separation of regulator vents and building openings and/or sources of ignition. This standard is not intended to describe separation requirements between various building openings.

Separation Requirement

Spacing between a regulator vent and building openings or sources of ignition shall comply with distances shown.

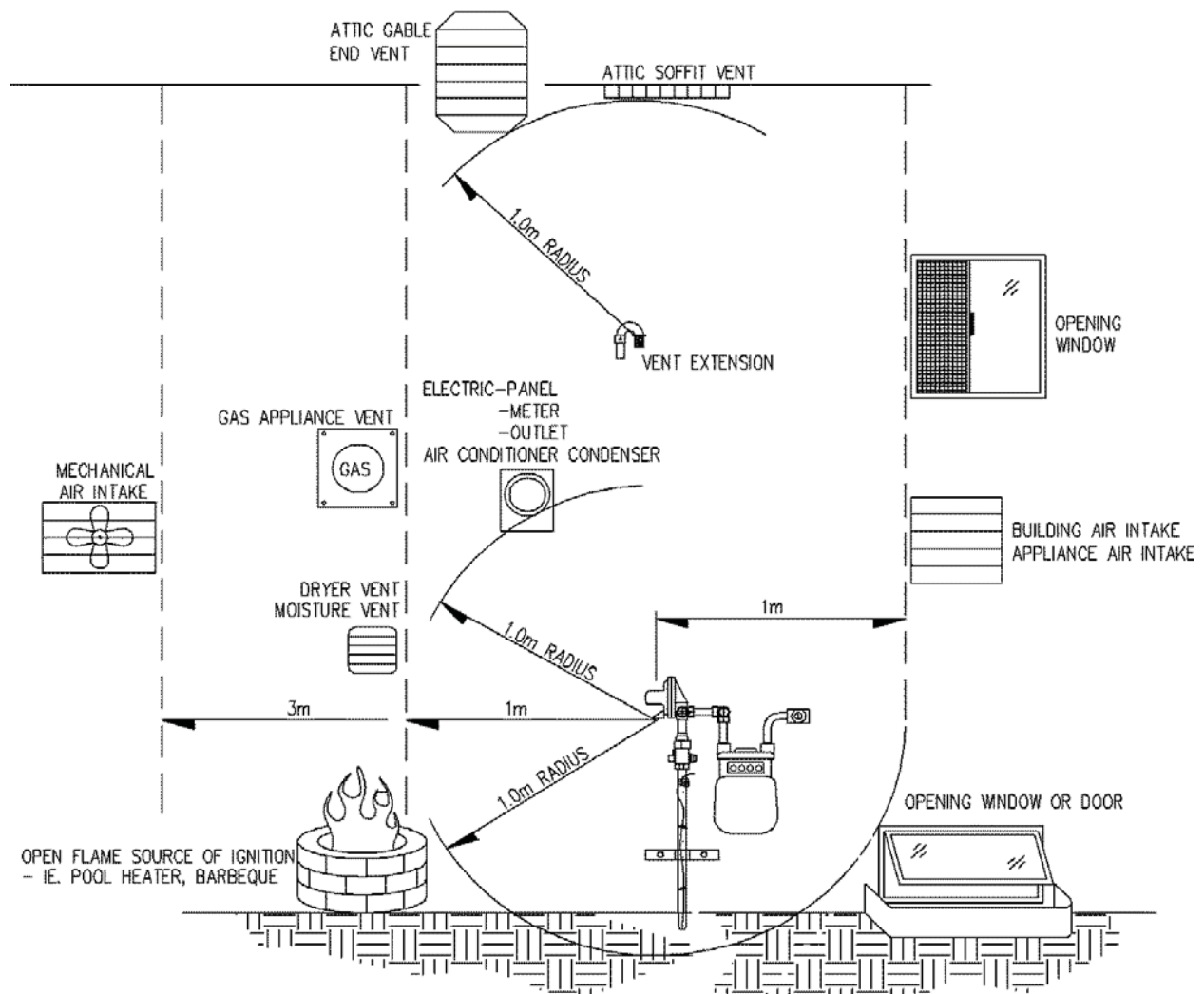


Figure 2
Separation Requirements for gas service

COMPACT METER LAYOUT – RIGHT SIDE

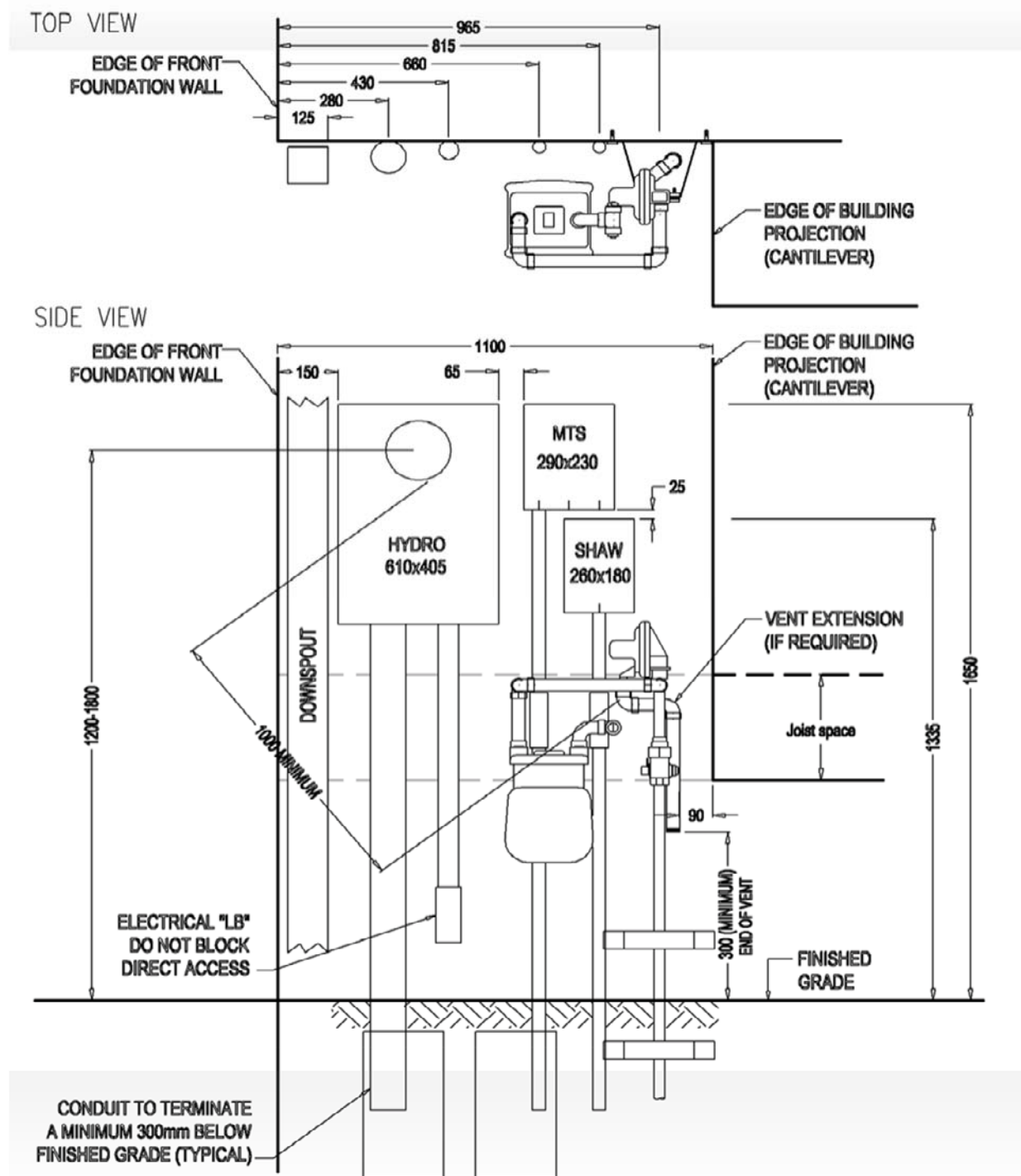


Figure 3



Figure 3A

Installation Notes

1. A minimum of 1000mm clearance is required from the closest point of the electric meter glass to the gas regulator relief vent. Install a vent extension if needed to obtain this distance.
2. As per the Manitoba Electrical Code, a minimum working space of 1000mm with secure footing is required in front of all electrical equipment, including the electrical meter socket. This distance must be located on the customer's own property and the measurement cannot extend beyond the customer property line.
3. The 24"X16" (610X405mm) Hydro meter box shown is suitable for use with 350kcmil Hydro secondary conductors. All dimensions shown shall apply when a smaller meter box is used.
4. Dimensions shown are in millimetres.

COMPACT METER LAYOUT – LEFT SIDE

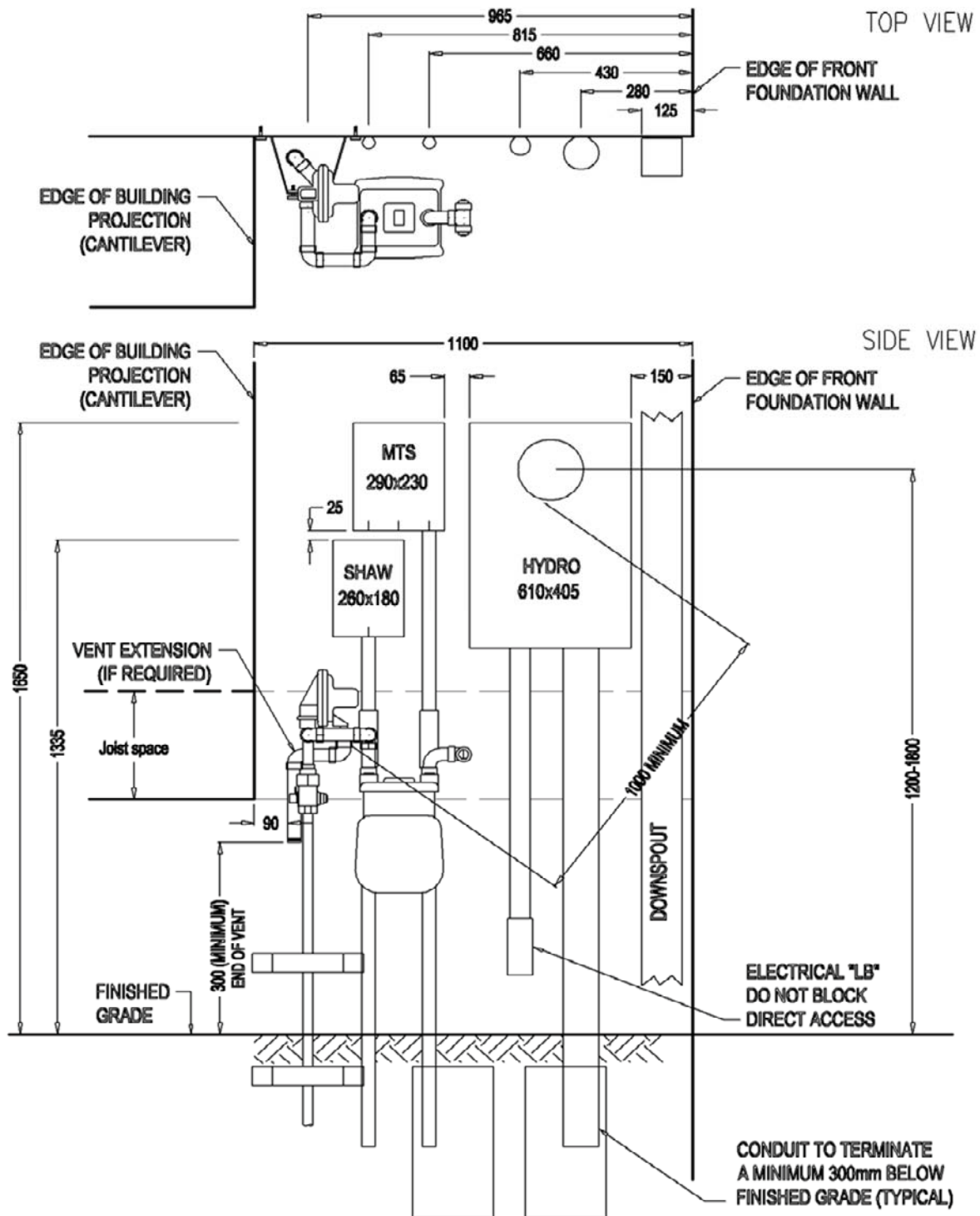


Figure 4

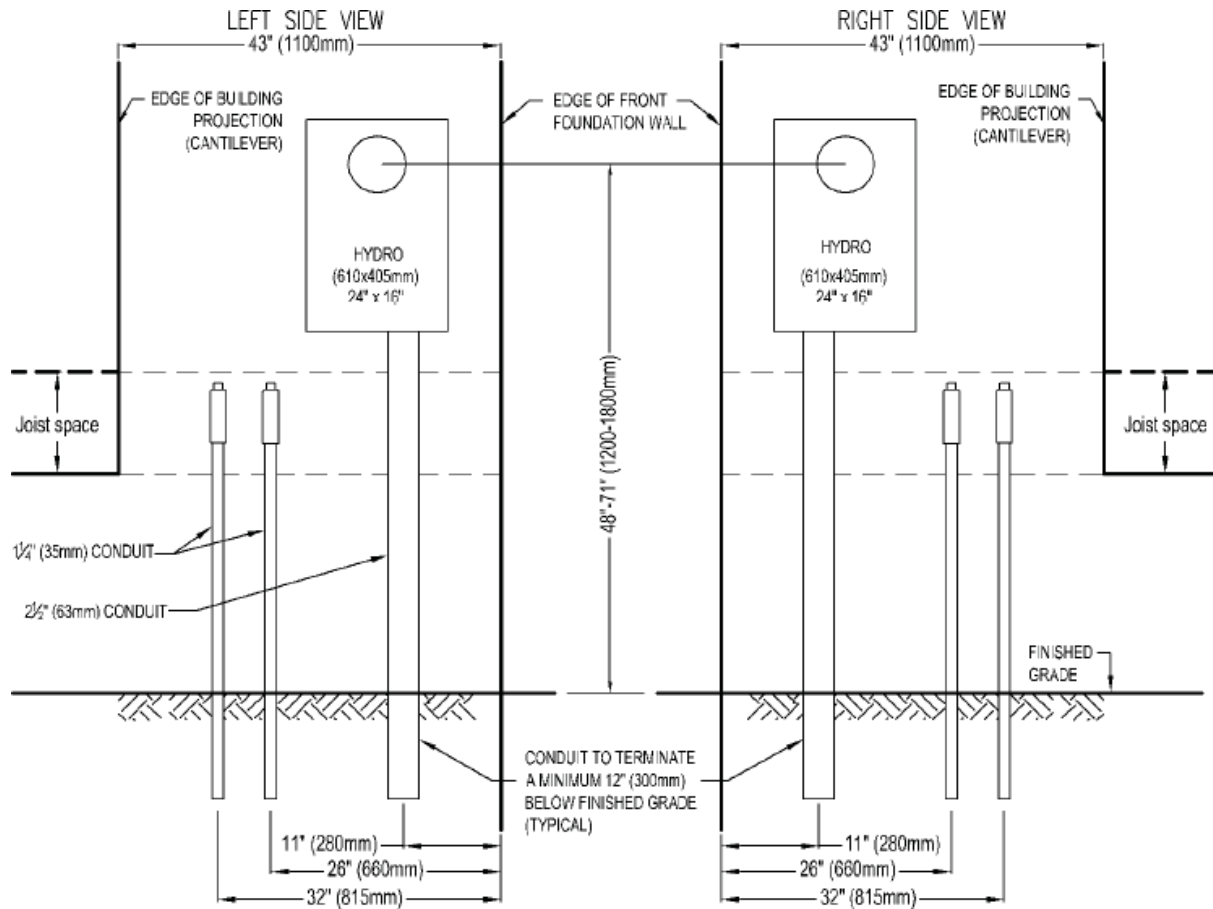


Figure 4A

Installation Notes

1. A minimum of 1000mm clearance is required from the closest point of the electric meter glass to the gas regulator relief vent. Install a vent extension if needed to obtain this distance.
2. As per the Manitoba Electrical Code, a minimum working space of 1000mm with secure footing is required in front of all electrical equipment, including the electrical meter socket. This distance must be located on the customer's own property and the measurement cannot extend beyond the customer property line.
3. The 24"X16" (610X405mm) Hydro meter box shown is suitable for use with 350kcmil Hydro secondary conductors. All dimensions shown shall apply when a smaller meter box is used.
4. Dimensions shown are in millimetres.

Compact Meter Layout - Electrical Contractor Rough-in



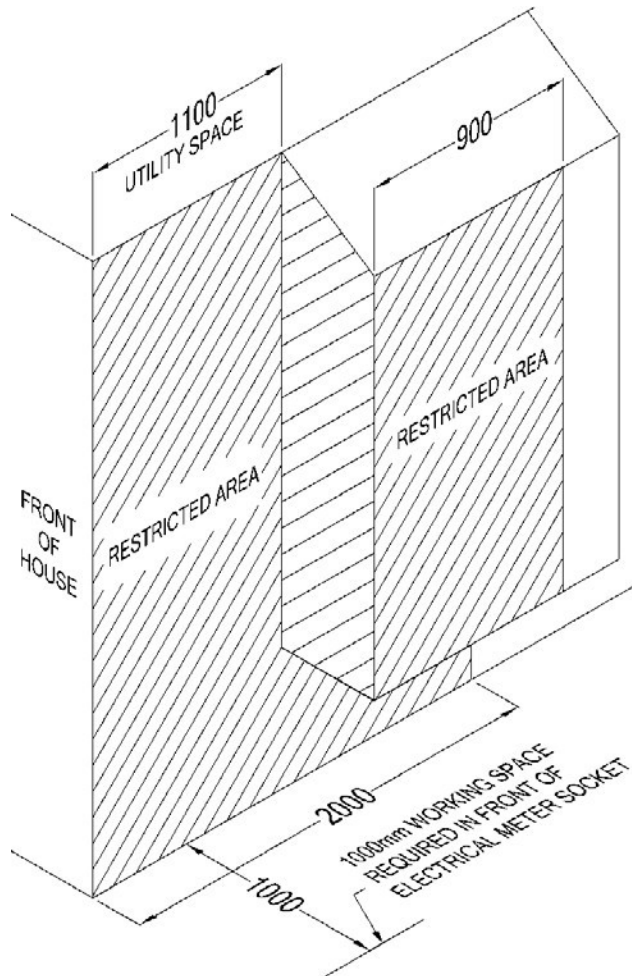
Notes:

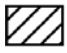
Manitoba Hydro service installation will not proceed if rough-in is not installed as shown.

Figure 5

UTILITY SPACE AND RESTRICTED AREA

Utility Space Restricted Area Minimum Distance from Building Corner



Shaded area  denotes the restricted area prohibiting wall openings and certain features including:

- Doors
- Opening windows
- Building or combustion air intakes
- Exhaust vents (building exhaust, dryer exhaust, appliance vent)
- Source of ignition
- Electrical outlets
- Sump pump discharge
- Outdoor tap

Notes:

The utility space shall be a flat surface i.e. no cantilevers, faux columns or other obstructions.

The installation of a rain gutter downspout shall not interfere with the utility equipment.

Dimensions shown are millimetres.

Figure 6

Accessible formats available upon request.