

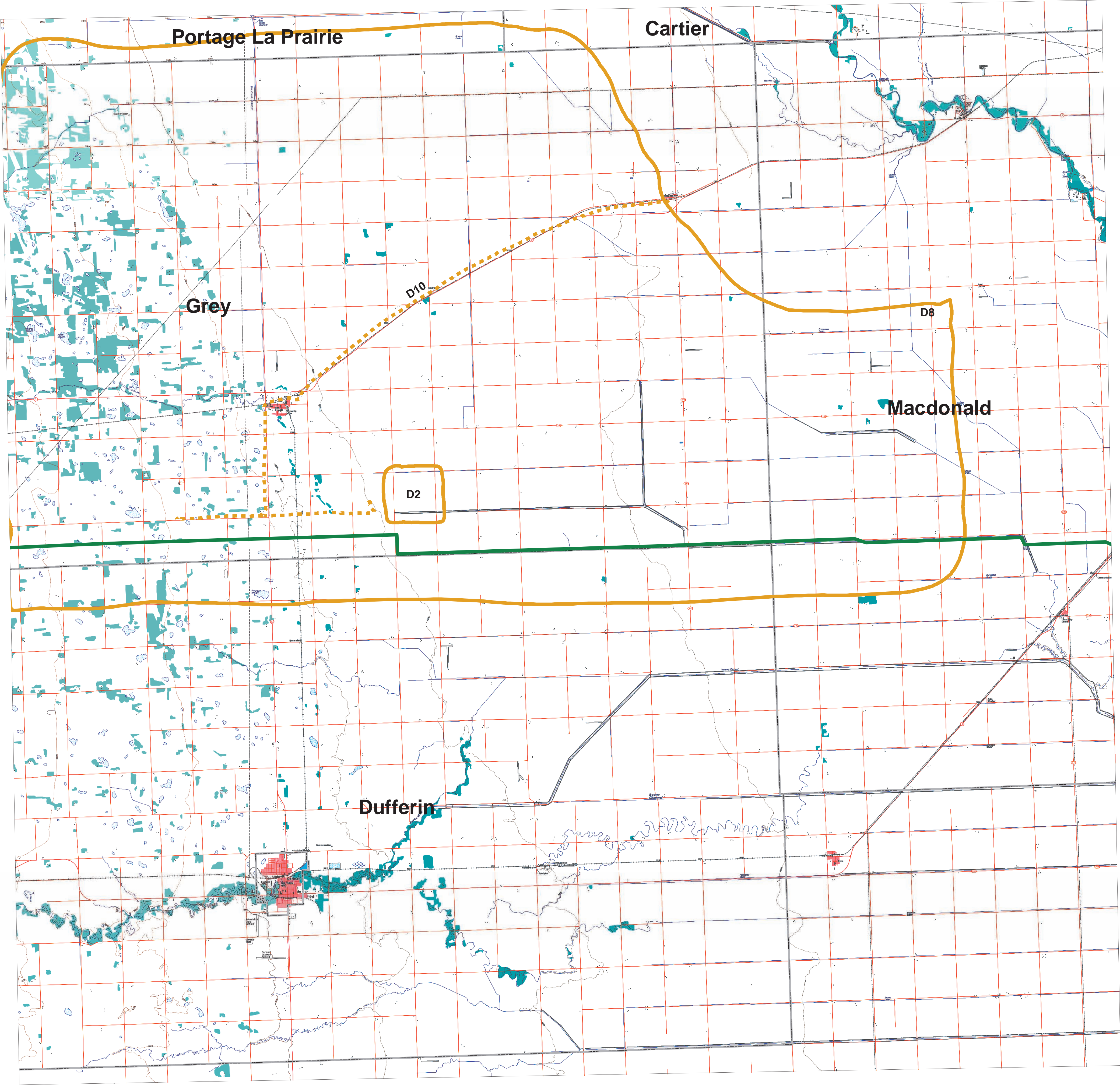


Interview ID	ID	Type	Location	Notes
D	2	Land Use	Grey	Landfill area
D	8	Land Use	Grey	Potential expansion of aerial application or the necessity there of. Potential 2 polygons.
D	10	Land Use	Grey	Est. location of groomed snowmobile trail following Hwy 2 from Fannystelle and Elm Creek south bound and east/ west of the separation just north of the preferred preliminary route proposed of the junction just back into the RM of Grey coming West bound.

Date: October 6, 2010  
Interviewee: Ted Tkachyk  
Interviewer: Trevor Joyal

### Legend

- Final Preferred Route
- Rural Municipalities
- Key Person Information
  - Points of Interest
  - Lines of Interest
  - Areas of Interest





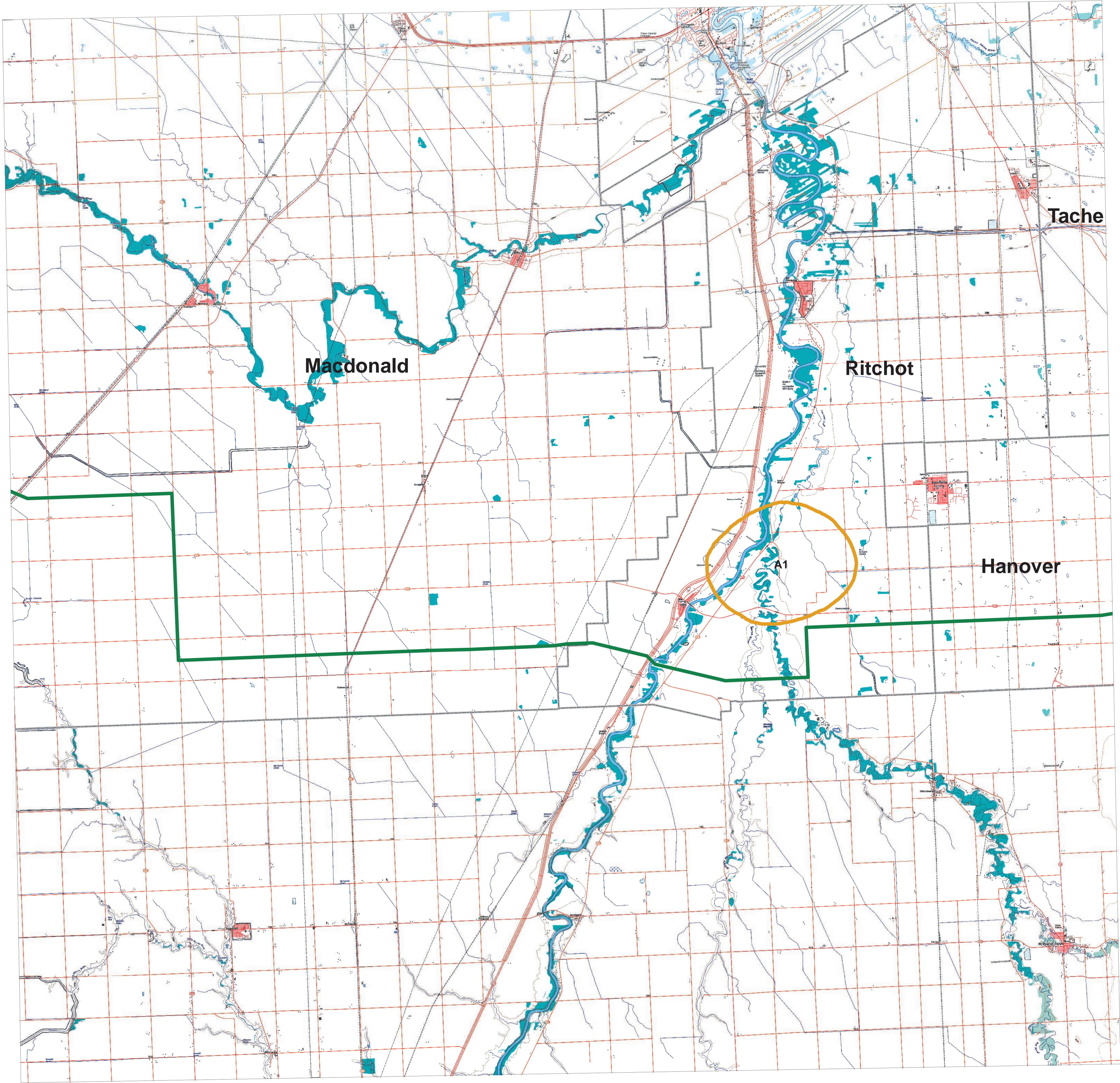


Interview ID	ID	Type	Location	Notes
A	1	Recreation	Niverville	Area used for tourism and recreational activities and former landing site for settlers

Date: September 28, 2010  
Interviewee: Greg Fehr  
Interviewer: Natalie Ducharme

### Legend

- Final Preferred Route
- Rural Municipalities
- Key Person Information
  - Points of Interest
  - Lines of Interest
  - Areas of Interest



0 0.5 1 2 3 4 Kilometres  
0 0.5 1 2 3 4 Miles  
Coordinate System: UTM Zone 14N, NAD83  
Data Source: ProvMB, Federal Gov't, MMM  
Date Created: December 22, 2010

1:80,000

**FOR REVIEW PURPOSES ONLY**  
Information displayed on this document is confidential and solely developed to assist Manitoba Hydro in the Site Selection and Environmental Assessment (SSEA) process for the Bipole III Transmission Project. Manitoba Hydro and its consultants will not use the information for any other purpose other than that stated above without informed consent of participants.

**Town Of Niverville  
Key Person Interview (KPI)**





Interview ID	ID	Type	Location	Notes
W	5	Infrastructure & Services	Macdonald	Areas of Residential Growth

Date: February 22, 2011  
Interviewee: Anonymous  
Interviewer: Brock Feenstra

**Legend**

Final Preferred Route

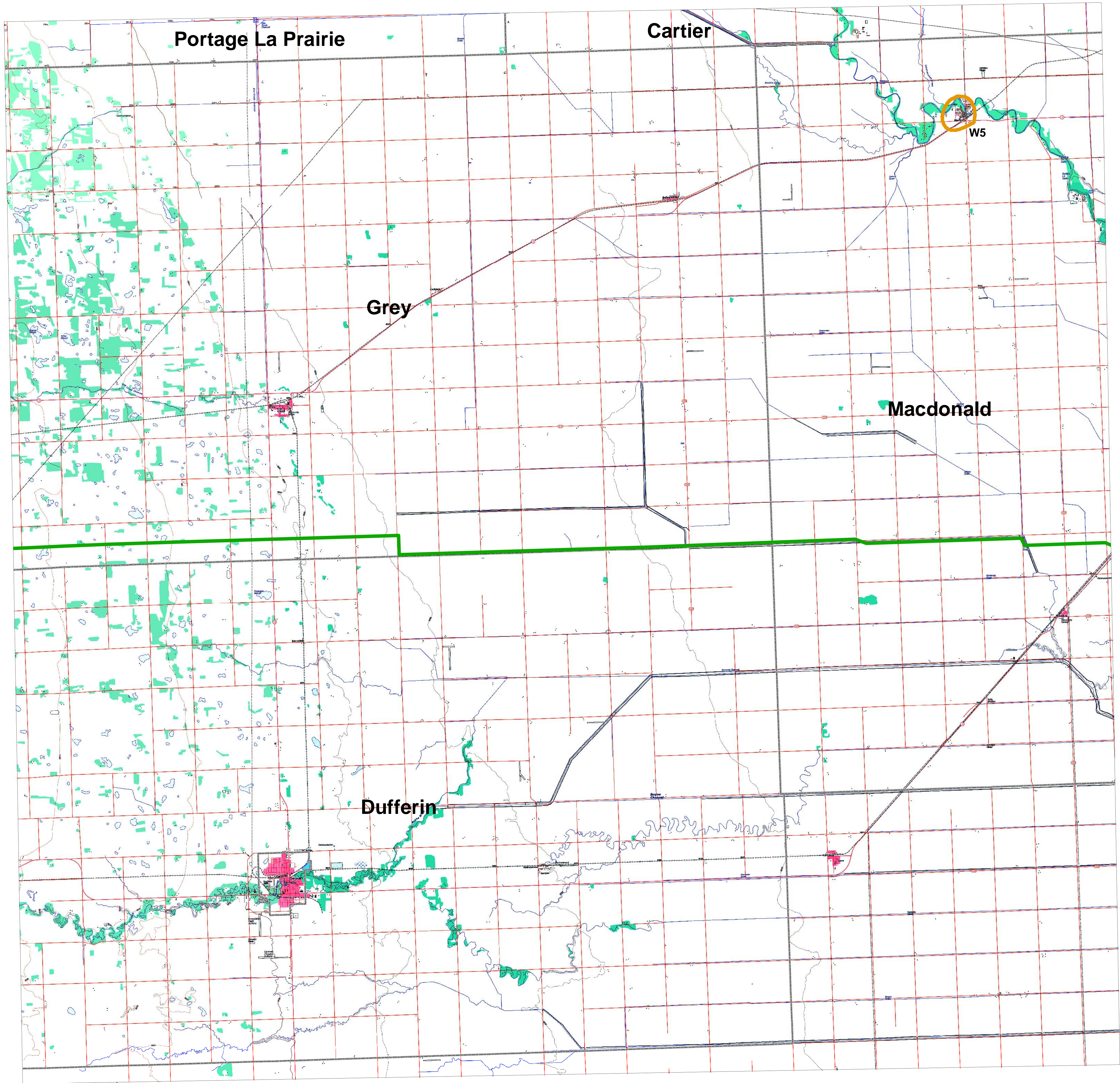
Rural Municipalities

**Key Person Information**

Points of Interest

Lines of Interest

Areas of Interest



0 0.5 1 2 3 4 Kilometres  
0 0.5 1 2 3 4 Miles

Coordinate System: UTM Zone 14N, NAD83  
Data Source: ProvMB, Federal Gov't, MMM  
Date Created: March 30, 2011

1:80,000

**FOR REVIEW PURPOSES ONLY**  
Information displayed on this document is confidential and solely developed to assist Manitoba Hydro in the Site Selection and Environmental Assessment (SSEA) process for the Bipole III Transmission Project. Manitoba Hydro and its consultants will not use the information for any other purpose other than that stated above without informed consent of participants.

**Rural Municipality Of Macdonald  
Key Person Interview (KPI)**



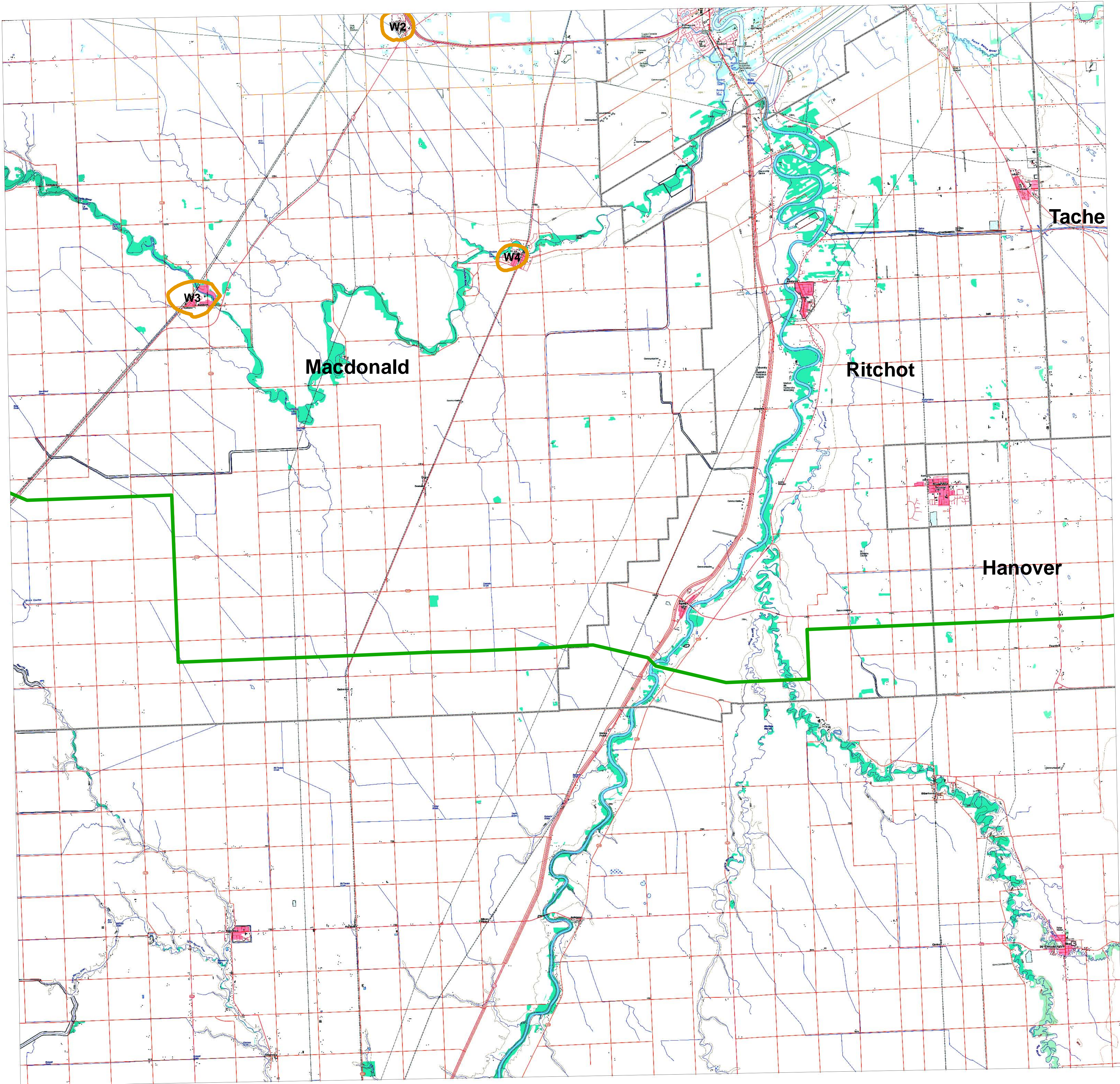


Interview ID	ID	Type	Location	Notes
W	2	Land Use & Development	Macdonald	Areas of Residential Growth
W	3	Land Use & Development	Macdonald	Areas of Residential Growth
W	4	Land Use & Development	Macdonald	Areas of Residential Growth

Date: February 22, 2011  
Interviewee: Anonymous  
Interviewer: Brock Feenstra

### Legend

- Final Preferred Route
- Rural Municipalities
- Key Person Information
  - Points of Interest
  - Lines of Interest
  - Areas of Interest





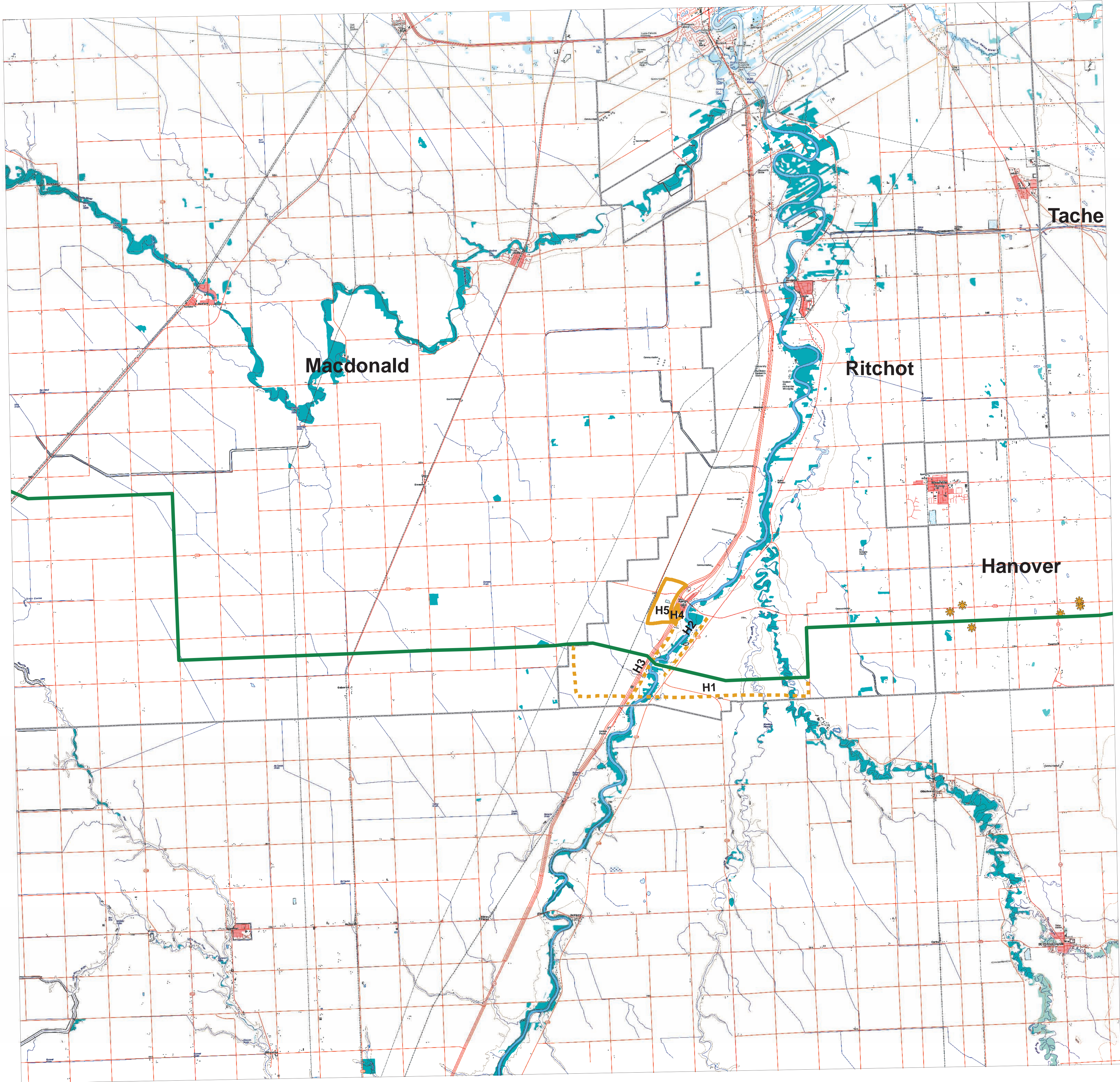


Interview ID	ID	Type	Location	Notes
H	1	Land Use	Ste. Agathe	Identified as better route because of developments south of Ste. Agathe
H	2	Land Use	Ste. Agathe	Water line expansion
H	3	Land Use	Ste. Agathe	Next phase of the water line expansion
H	4	Land Use	Ste. Agathe	Residential development east of Hwy 75 in ring dyke
H	5	Land Use	Ste. Agathe	Commercial development west of Hwy 75 in ring dyke

Date: October 22, 2010  
Interviewee: Maurice Leclaire and Ray Philippe  
Interviewer: Natalie Ducharme

### Legend

- Final Preferred Route
- Rural Municipalities
- Key Person Information
  - Points of Interest
  - Lines of Interest
  - Areas of Interest





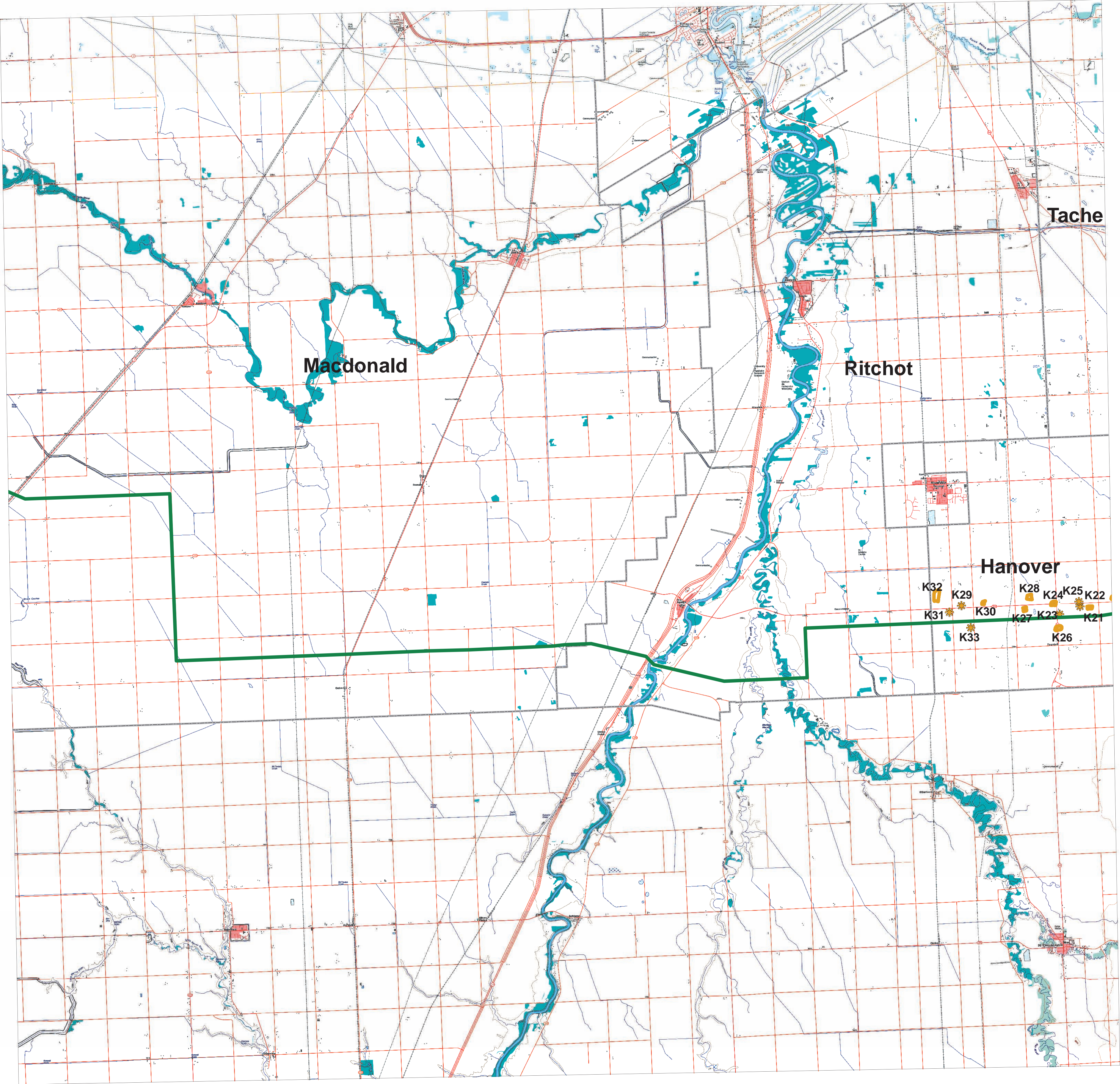


Interview ID	ID	Type	Location	Notes
K	21	Land Use	Hanover	Barn near the PPR
K	22	Land Use	Hanover	Residence near the PPR
K	23	Land Use	Hanover	Residence near the PPR
K	24	Land Use	Hanover	Residence and barn near the PPR
K	25	Land Use	Hanover	Residence near the PPR
K	26	Land Use	Hanover	Residence and barn near the PPR
K	27	Land Use	Hanover	Barn near the PPR
K	28	Land Use	Hanover	Residence and barn near the PPR
K	29	Land Use	Hanover	Barn near the PPR
K	30	Land Use	Hanover	Residence near the PPR
K	31	Land Use	Hanover	Residence near the PPR
K	32	Land Use	Hanover	Anhydrous fertilizer site
K	33	Land Use	Hanover	Residence near the PPR

Date: November 15, 2010  
Interviewee: Stan Toews  
Interviewer: Natalie Ducharme

### Legend

- Final Preferred Route
- Rural Municipalities
- Key Person Information
  - Points of Interest
  - Lines of Interest
  - Areas of Interest





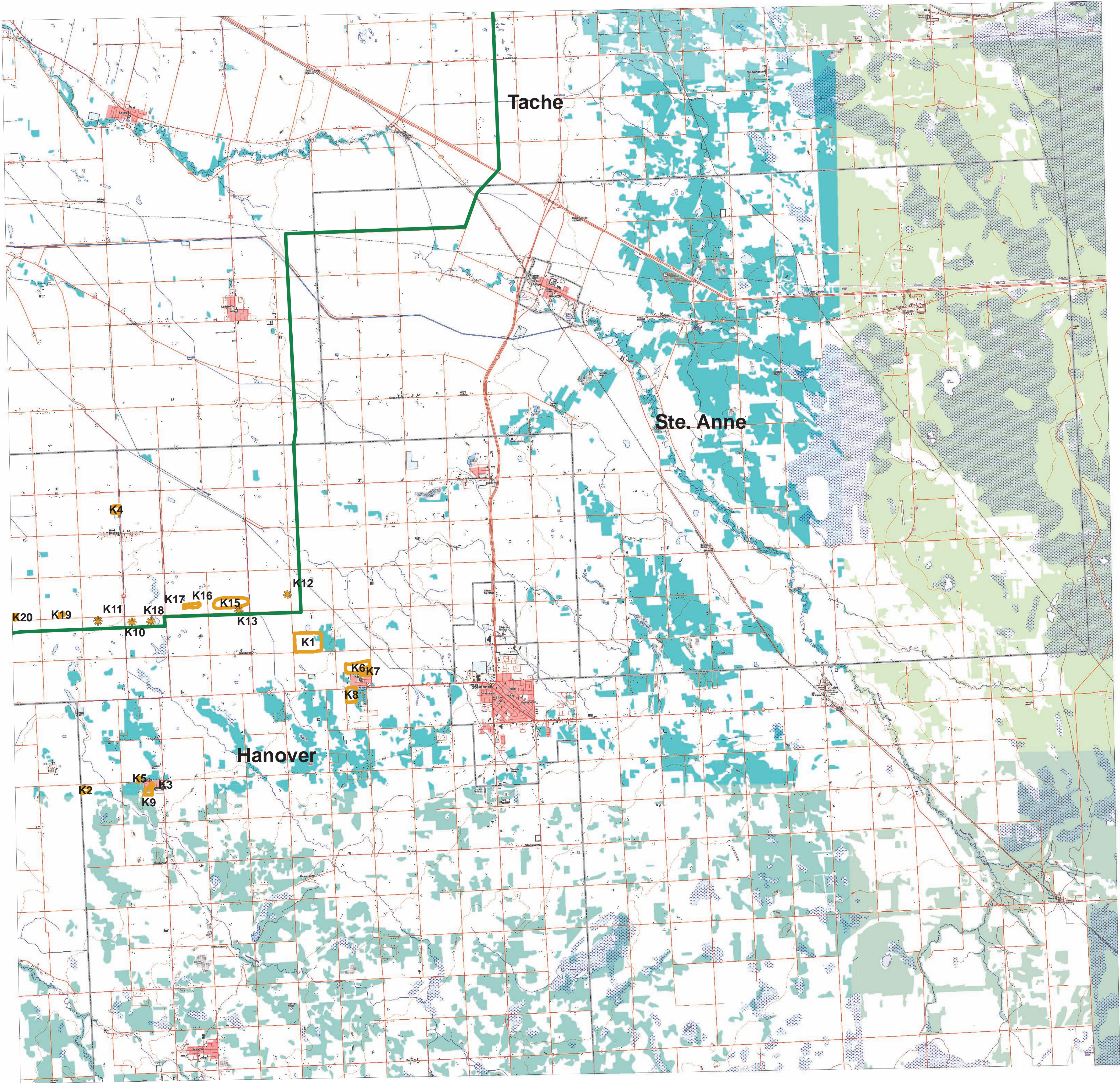


Interview ID	ID	Type	Location	Notes
K	1	Land Use	Mitchell	Waste water treatment facility
K	2	Land Use	Kleefeld	Waste water treatment facility
K	3	Land Use	Kleefeld	Water Treatment facility
K	4	Land Use	New Bothwell	Waste water treatment facility
K	5	Land Use	Kleefeld	New water distribution lines
K	6	Land Use	Mitchell	Urban development
K	7	Land Use	Mitchell	Residential development
K	8	Land Use	Mitchell	Residential development
K	9	Land Use	Kleefeld	Development
K	10	Land Use	Hanover	Barn near the PPR
K	11	Land Use	Hanover	Barn near the PPR
K	12	Land Use	Hanover	Barn near the PPR
K	13	Land Use	Hanover	Barn near the PPR
K	15	Land Use	Hanover	Barn near the PPR
K	16	Land Use	Hanover	Barn near the PPR
K	17	Land Use	Hanover	Barn near the PPR
K	18	Land Use	Hanover	Residence near the PPR
K	19	Land Use	Hanover	Barn near the PPR
K	20	Land Use	Hanover	Residence near the PPR

Date: November 15, 2010  
Interviewee: Stan Toews  
Interviewer: Natalie Ducharme

### Legend

- Final Preferred Route
- Rural Municipalities
- Key Person Information
  - Points of Interest
  - Lines of Interest
  - Areas of Interest





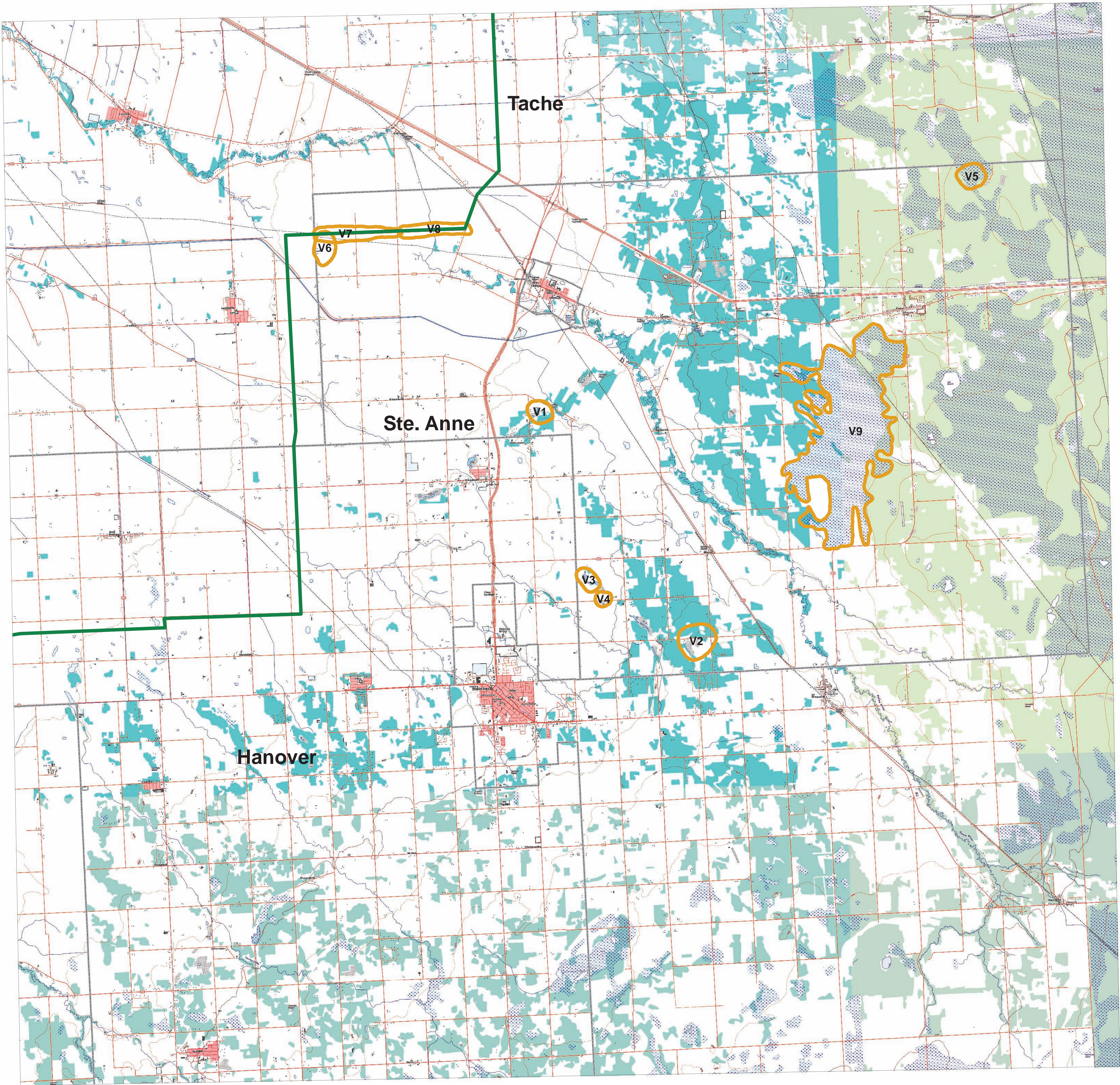


Interview ID	ID	Type	Location	Notes
V	1	Land Use	RM of Ste Anne	Maintained aggregates
V	2	Land Use	RM of Ste Anne	Maintained aggregates
V	3	Land Use	RM of Ste Anne	Maintained aggregates
V	4	Land Use	RM of Ste Anne	Maintained aggregates
V	5	Land Use	RM of Ste Anne	Maintained aggregates
V	6	Land Use	RM of Ste Anne	Expanding dairy operation
V	7	Land Use	RM of Ste Anne	Dirt road under PPR
V	8	Land Use	RM of Ste Anne	Road not maintained in winter
V	9	Land Use	RM of Ste Anne	Peatmoss extraction

Date: December 22, 2010  
Interviewee: Art Bergmann  
Interviewer: Trevor Joyal

### Legend

- Final Preferred Route
- Rural Municipalities
- Key Person Information
  - Points of Interest
  - Lines of Interest
  - Areas of Interest







Interview ID	ID	Type	Location	Notes
F	1	Land Use	Lorette	Snowman route north of Lorette
F	2	Point of Interest	Tache	Longitudinal Center of Canada
F	3	Land Use	Tache	Aggregate

Date: November 12, 2010  
Interviewee: Anonymous  
Interviewer: Trevor Joyal

### Legend

- Final Preferred Route
- Rural Municipalities
- Key Person Information**
  - ✱ Points of Interest
  - Lines of Interest
  - Areas of Interest

