

Manitoba Hydro

Bipole III Transmission Project

Project Infrastructure

Construction Power (KN36)

Construction Power Site

Construction Camp Study Area

Soil Baseline Conditions

Soil Drainage

Rapid

Well

Moderately Well

Imperfect

Poor

Very Poor

Non-Soil

Soil Texture

Coarse Skeletal

Very Coarse

Coarse

Moderately Coarse

Medium

Moderately Fine

Fine

Very Fine

Fibric

Mesic

Undifferentiated

Non-Soil

Permafrost Distribution

Wetlands Database

Continuous (> 90%)

Extensive Discontinuous (50 - 90%)

Sporadic Discontinuous (10 to 50%)

Soils Permafrost

Continuous (> 90 %)

Extensive Discontinuous (50 - 90%)

Sporadic Discontinuous (10 - 50%)

Coordinate System: UTM Zone 14N NAD83

Data Source: MBHydro, MMM, ProvMB, Stantec

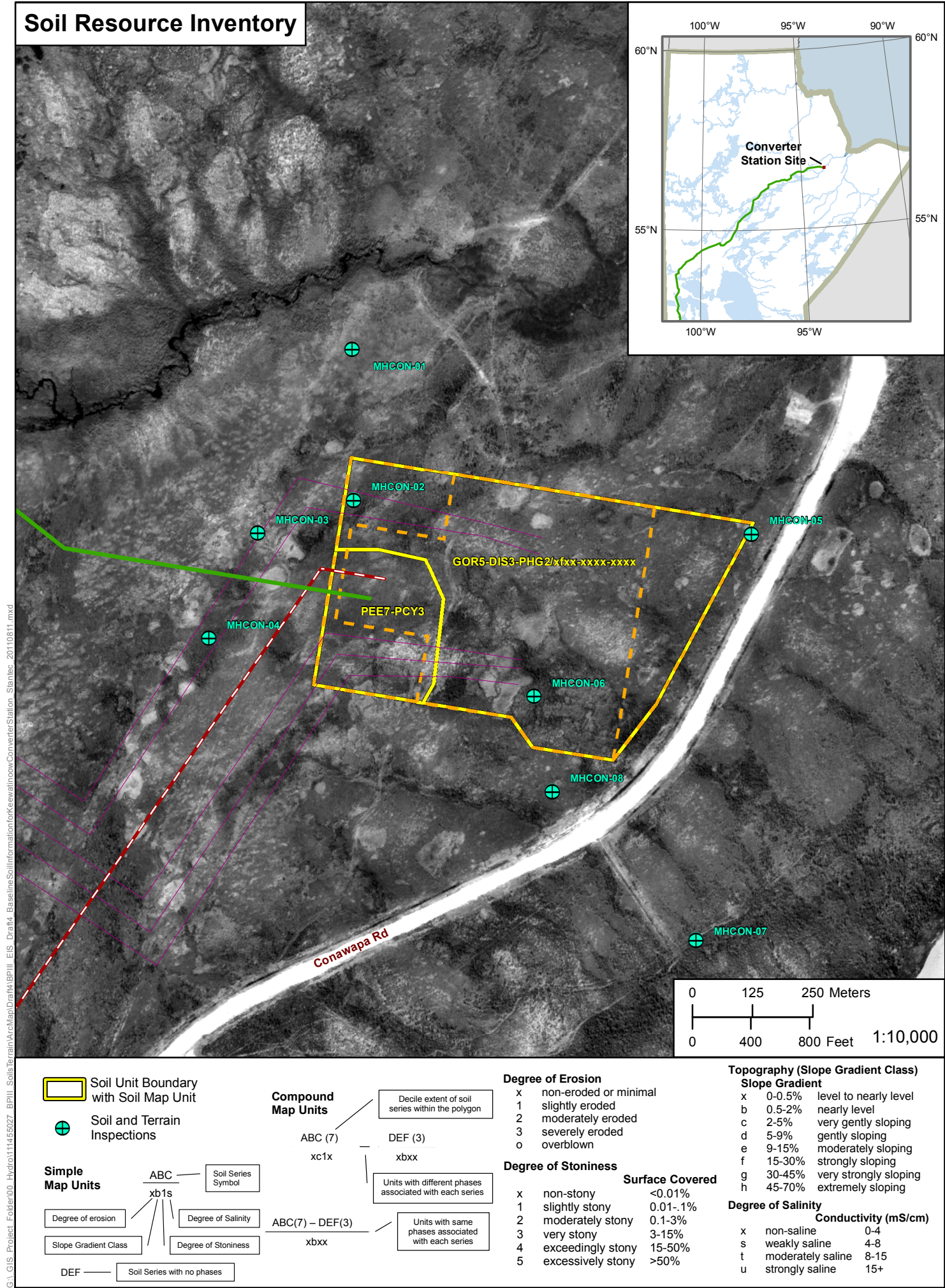
Date Created: August 11, 2011

Keewatinoow Construction Camp Soil Baseline Conditions

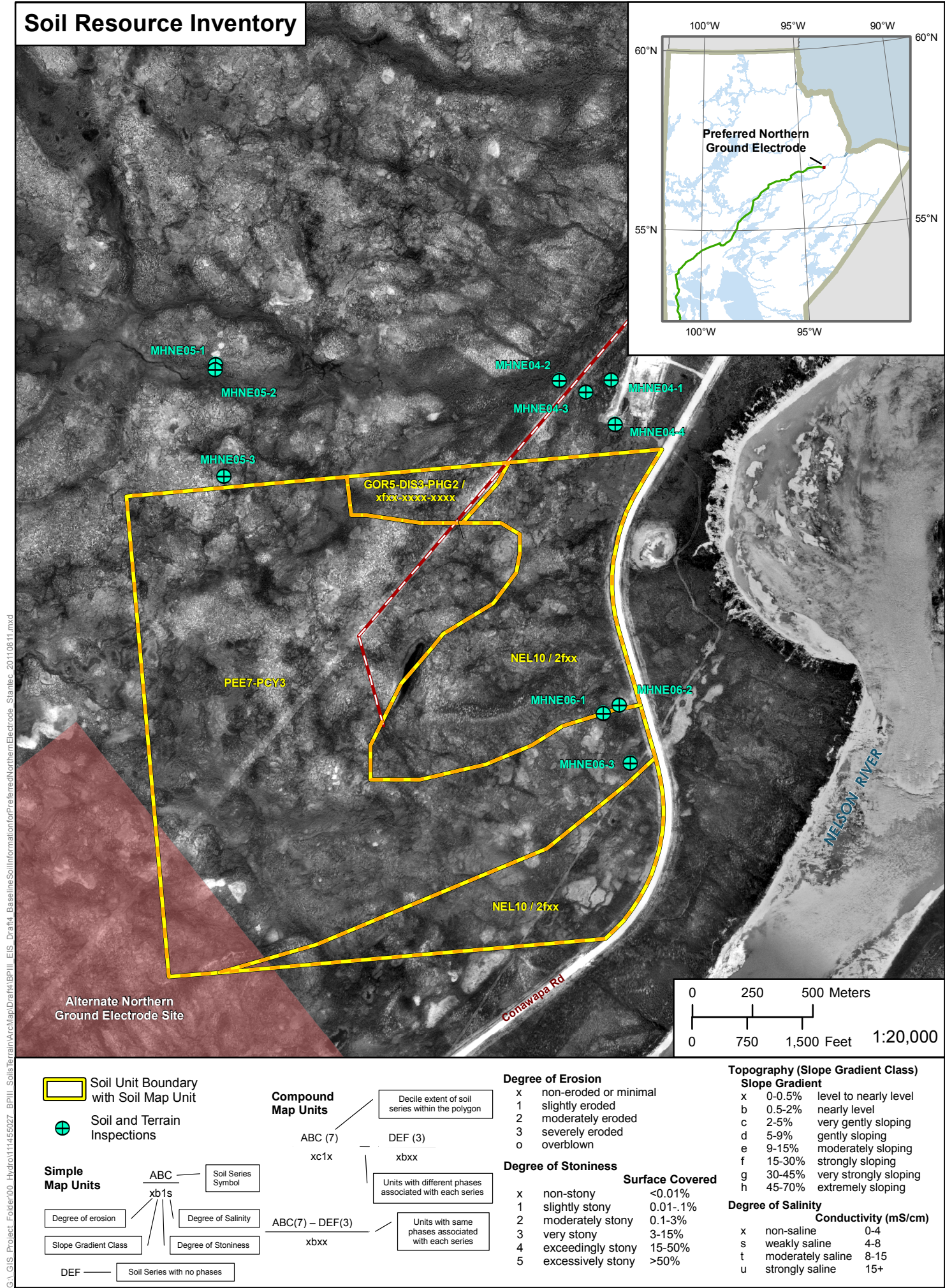
Draft: For Discussion Purposes Only

Map 7

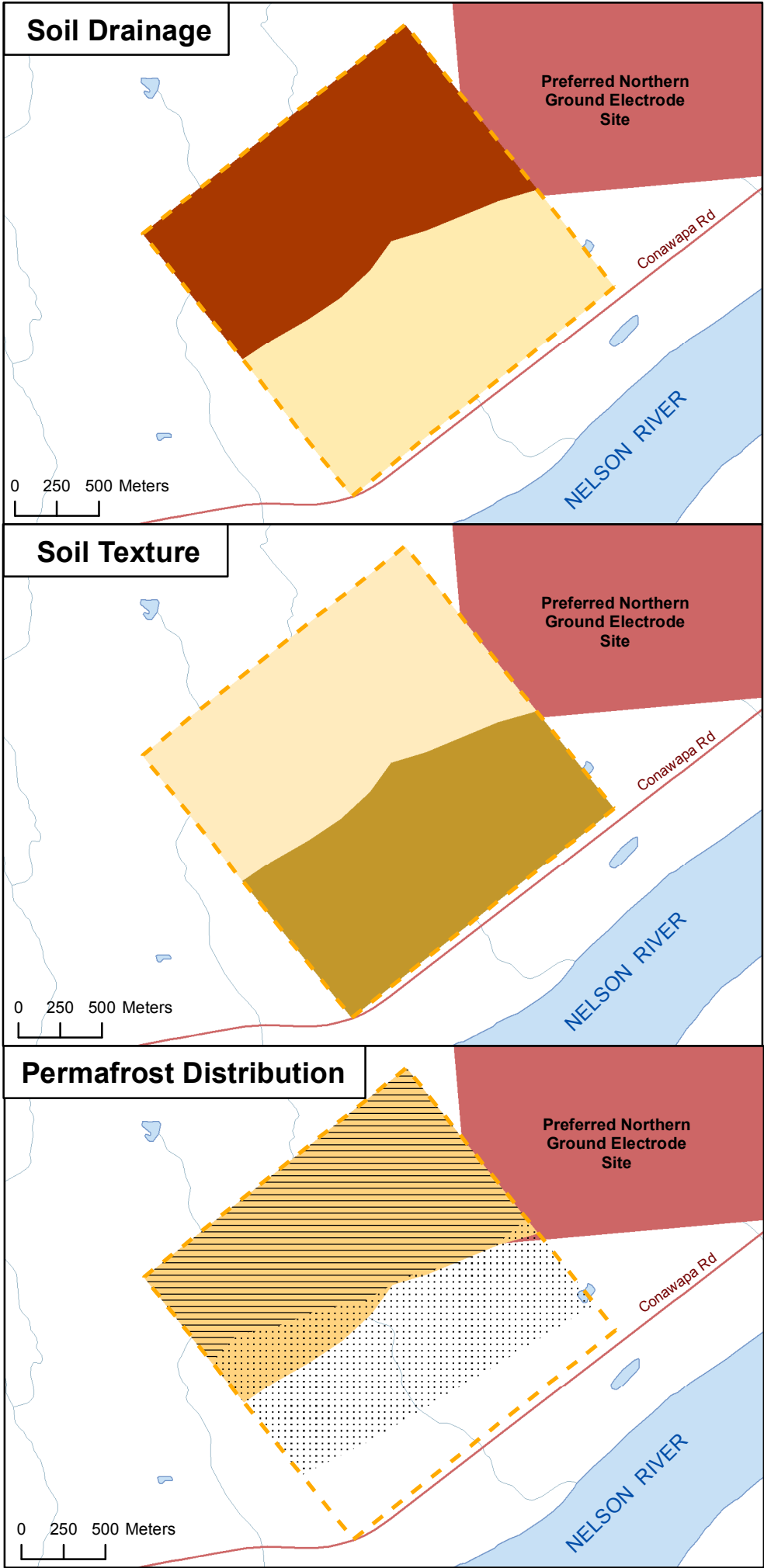
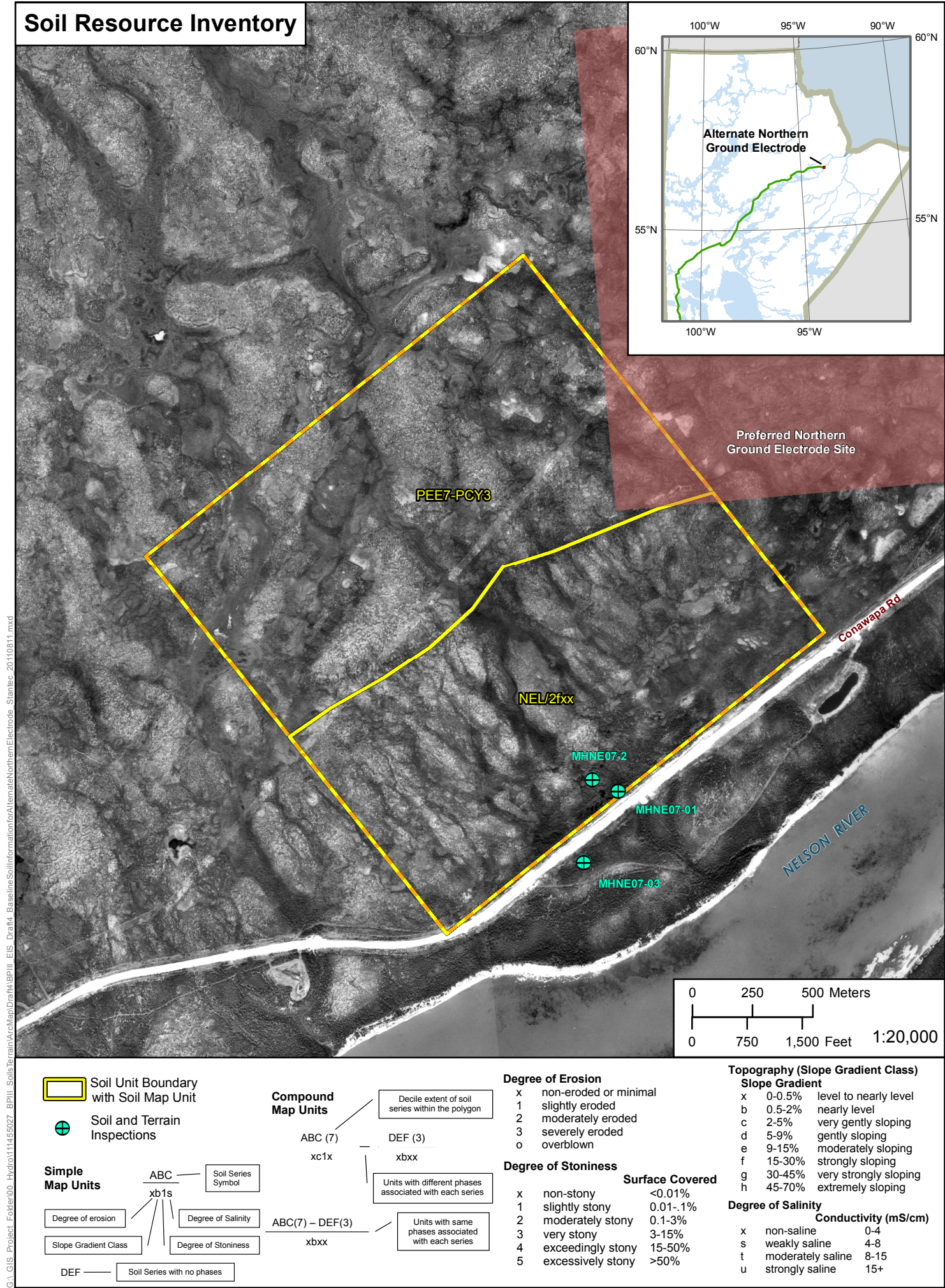












Bipole III Transmission Project

Project Infrastructure

Ground Electrode Site

Ground Electrode Study Area

Soil Baseline Conditions

Soil Drainage

Rapid

Well

Moderately Well

Imperfect

Poor

Very Poor

Non-Soil

Soil Texture

Coarse Skeletal

Very Coarse

Coarse

Moderately Coarse

Medium

Moderately Fine

Fine

Very Fine

Fibric

Mesic

Undifferentiated

Non-Soil

Permafrost Distribution

Wetlands Database

Continuous (> 90%)

Extensive Discontinuous (50 - 90%)

Sporadic Discontinuous (10 to 50%)

Soils Permafrost

Continuous (> 90 %)

Extensive Discontinuous (50 - 90%)

Sporadic Discontinuous (10 - 50%)

Coordinate System: UTM Zone 14N NAD83

Data Source: MBHydro, MMM, ProvMB, Stantec

Date Created: August 11, 2011

N

Alternate Northern Ground Electrode Soil Baseline Conditions

Draft: For Discussion Purposes Only

Map 10



