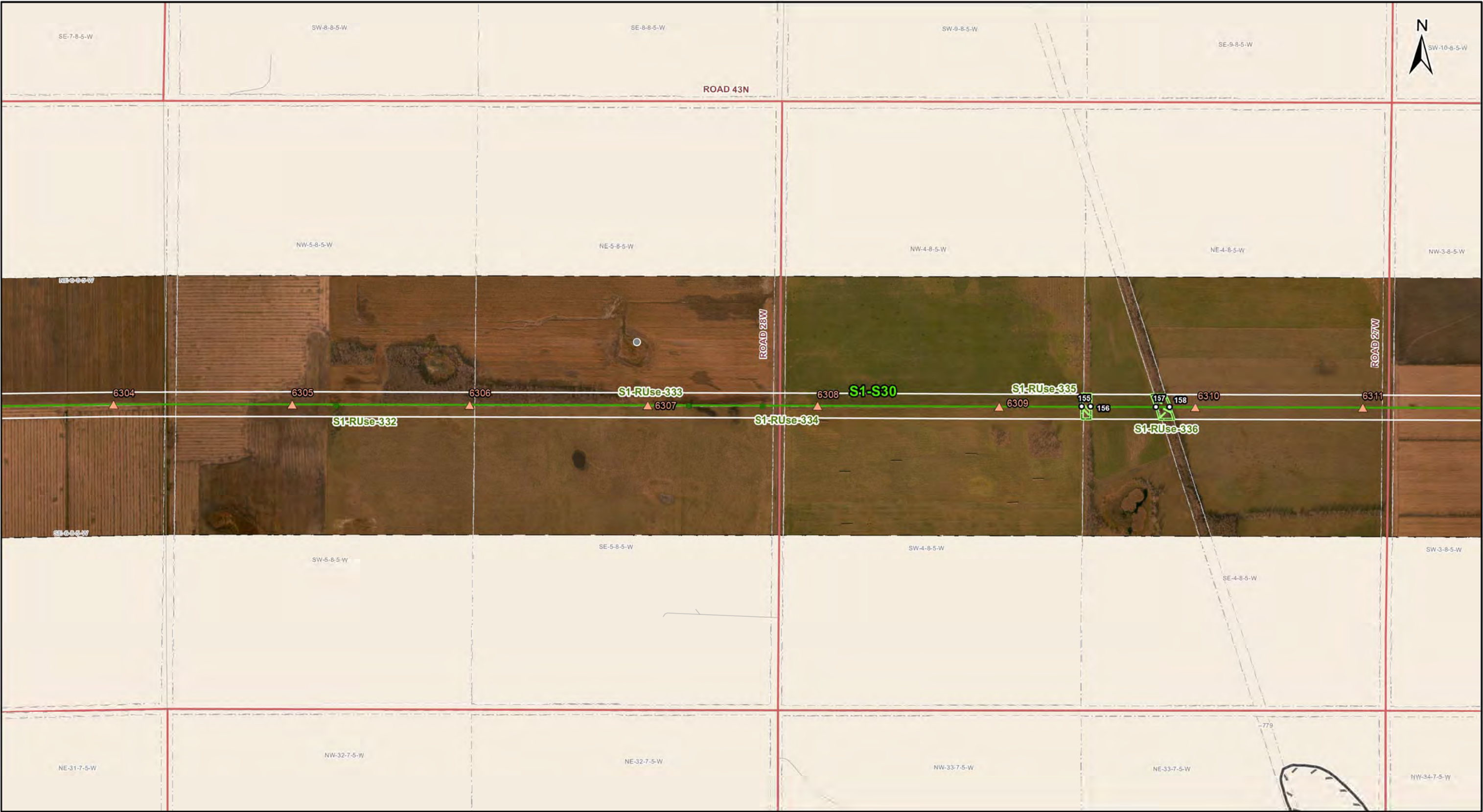


This page is intentionally left blank.



Coordinate System: UTM Zone 14N NAD83
Data Source: MB Hydro, ProvMB, NRCAN
Date Created: January 23, 2017
Version: Final 2.03

0 125 250 500
Metres
1:10,000

- Land Base**
- Transmission Line
 - Highway
 - Major Road
 - Local Road
 - Railway (Operational)
 - Railway (Discontinued)
 - First Nation
 - Mining
 - Provincial Forest
 - Parcel Fabric

- Project Infrastructure**
- Angle Tower Locations
 - Towers (Preliminary)
 - BPIII Final Preferred Route
 - 66 m Right of Way
- *Towers are subject to change, and are only used as a rough guide*
- Sensitive Sites**
- Point Features
 - Linear Features
 - Area Features
- *Currently outside the Project footprint*

- Points of Access***
- Proposed Access Point
 - Major Stream Crossing
 - Abandoned Rail Crossing
 - Rail Crossing
 - Transmission Line Crossing
 - Approved Access Route

- ESS Features**
- Resource Use**
- Forestry
- Resource Use**
- Forestry

Bipole III Transmission Project
Construction Environmental Protection Plan
Construction Section S1
Environmentally Sensitive Site Locations

ESS Group: Forestry

Sec-Seg ID	ESS ID	ESS Name	Easting	Northing	UTM Zone
S1-S30	S1-RUse-332	Shelterbelt	564048	5497675	14N
S1-S30	S1-RUse-333	Shelterbelt	565005	5497697	14N
S1-S30	S1-RUse-334	Shelterbelt	565204	5497701	14N

Potential Effects:

Removal in area of ROW intersect

Specific Mitigation:

- Carry out construction activities on frozen or dry ground to minimize surface damage, rutting and erosion
- Identify and flag prior to start of work
- If Burning of clearing debris is required it must be conducted during winter months only and ensure that all fires are extinguished prior to spring break-up
- Notify landowner regarding construction activities and schedule, and address concerns prior to start of work
- Use existing access trails, roads or cut lines whenever possible as access routes
- Limit all equipment to project footprint only, where possible
- No damage to vegetation on the edge of the Right of Way
- No pushing debris into adjacent timber

ESS Group: Forestry

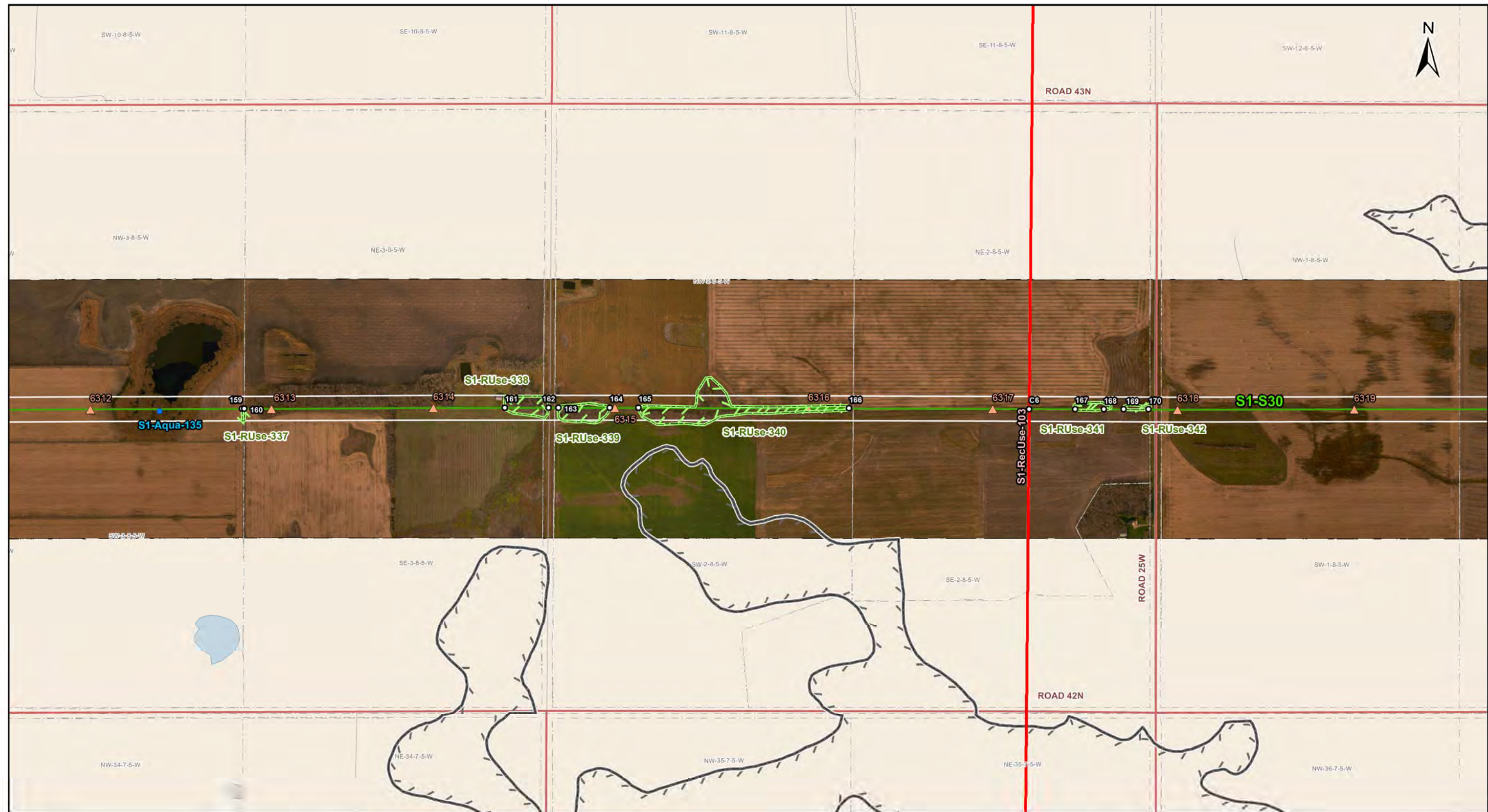
Sec-Seg ID	ESS ID	ESS Name	Location	Start	Stop	UTM Zone	Distance
S1-S30	S1-RUse-335	Shelterbelt	Site: 155 to 156	E-566066 N-5497716	E-566090 N-5497717	14N	23 m
S1-S30	S1-RUse-336	Shelterbelt	Site: 157 to 158	E-566266 N-5497720	E-566305 N-5497720	14N	39 m

Potential Effects:

Removal in area of ROW intersect

Specific Mitigation:

- Carry out construction activities on frozen or dry ground to minimize surface damage, rutting and erosion
- Identify and flag prior to start of work
- If Burning of clearing debris is required it must be conducted during winter months only and ensure that all fires are extinguished prior to spring break-up
- Notify landowner regarding construction activities and schedule, and address concerns prior to start of work
- Use existing access trails, roads or cut lines whenever possible as access routes
- Limit all equipment to project footprint only, where possible
- No damage to Vegetation on the edge of the Right of Way
- No pushing debris into adjacent timber



Coordinate System: UTM Zone 14N NAD83
Data Source: MB Hydro, ProvMB, NRCAN
Date Created: January 23, 2017
Version: Final 2.03

0 125 250 500
Metres
1:10,000

Land Base

- Transmission Line
- Highway
- Major Road
- Local Road
- Railway (Operational)
- Railway (Discontinued)
- First Nation
- Mining
- Provincial Forest
- Parcel Fabric

Project Infrastructure

- Angle Tower Locations
- Towers (Preliminary)
- BPIII Final Preferred Route
- 66 m Right of Way
- Towers are subject to change, and are only used as a rough guide

Sensitive Sites

- Point Features
- Linear Features
- Area Features
- *Currently outside the Project footprint

Points of Access*

- Proposed Access Point
- Major Stream Crossing
- Abandoned Rail Crossing
- Rail Crossing
- Transmission Line Crossing
- Approved Access Route

ESS Features

Water

- Water Crossing

BPIII_ENVPP_EnvironSensSites_MH_CM_LN

Access

- Intersection

Resource Use

- Forestry

Bipole III Transmission Project
Construction Environmental Protection Plan
Construction Section S1
Environmentally Sensitive Site Locations

ESS Group: Water Crossing

Sec-Seg ID	ESS ID	ESS Name	Easting	Northing	UTM Zone	Channel Width	Wet Width	Fish Habitat Class	Habitat Sensitivity
S1-S30	S1-Aqua-135	Unnamed small lake	567492	5497732	14N	No Data	No Data	Low	No Fish Habitat

Potential Effects:

Habitat loss and contamination from structure foundations & installations; increased erosion & sedimentation of streams; Damage to stream banks; Loss of riparian vegetation; Fish habitat disturbances and impeded fish movement; Rutting of floodplain

Specific Mitigation:

- Carry out construction activities on frozen ground to minimize surface damage, rutting and erosion
- Use existing trails, roads or cut lines whenever possible as access routes
- Identify and flag buffer areas prior to start of work
- Riparian Buffers shall be a minimum of 30m and increase in size based on slope of land entering waterway. Within these buffers shrub and herbaceous understory veg will be maintained along with trees that do not violate MH Veg Clearance Requirements.
- 7m no machine zone will restrict equipment in close proximity to the waterbody except at the trail crossing.

ESS Group: Intersection

Sec-Seg ID	ESS ID	Location	ESS Name	Crossing Coordinates	UTM Zone
S1-S30	S1-RecUse-103	C6	Snowmobile Trail	E-569842 N-5497772	14N

Potential Effects:

Potential interference with snowmobilers; safety issues

Specific Mitigation:

- Identify and flag prior to start of work
- Avoid surface damage to and obstruction of access route
- Post warning markers and signs at snowmobile trail location
- Notify snowmobile club/users and local authorities regarding construction activities and schedule, and address concerns prior to construction

ESS Group: Forestry

Sec-Seg ID	ESS ID	ESS Name	Location	Start	Stop	UTM Zone	Distance
S1-S30	S1-RUse-337	Shelterbelt	Site: 159 to 160	E-567713 N-5497745	E-567719 N-5497745	14N	5 m
S1-S30	S1-RUse-338	Shelterbelt	Site: 161 to 162	E-568424 N-5497756	E-568542 N-5497758	14N	117 m
S1-S30	S1-RUse-339	Shelterbelt	Site: 163 to 164	E-568569 N-5497758	E-568707 N-5497760	14N	138 m
S1-S30	S1-RUse-340	Shelterbelt	Site: 165 to 166	E-568784 N-5497761	E-569355 N-5497767	14N	570 m
S1-S30	S1-RUse-341	Shelterbelt	Site: 167 to 168	E-569966 N-5497773	E-570044 N-5497774	14N	77 m
S1-S30	S1-RUse-342	Shelterbelt	Site: 169 to 170	E-570097 N-5497774	E-570164 N-5497775	14N	66 m

Potential Effects:

Removal in area of ROW intersect

Specific Mitigation:

- Carry out construction activities on frozen or dry ground to minimize surface damage, rutting and erosion
- Identify and flag prior to start of work
- If Burning of clearing debris is required it must be conducted during winter months only and ensure that all fires are extinguished prior to spring break-up
- Notify landowner regarding construction activities and schedule, and address concerns prior to start of work
- Use existing access trails, roads or cut lines whenever possible as access routes
- Limit all equipment to project footprint only, where possible
- No damage to Vegetation on the edge of the Right of Way
- No pushing debris into adjacent timber

No specific mitigation measures for this map, page intentionally left blank



Coordinate System: UTM Zone 14N NAD83
Data Source: MB Hydro, ProvMB, NRCAN
Date Created: January 23, 2017
Version: Final 2.03

0 125 250 500
Metres
1:10,000

- Land Base**
- Transmission Line
 - Highway
 - Major Road
 - Local Road
 - Railway (Operational)
 - Railway (Discontinued)
 - First Nation
 - Mining
 - Provincial Forest
 - Parcel Fabric

- Project Infrastructure**
- Angle Tower Locations
 - Towers (Preliminary)
 - BPIII Final Preferred Route
 - 66 m Right of Way
 - Towers are subject to change, and are only used as a rough guide
- Sensitive Sites**
- Point Features
 - Linear Features
 - Area Features
 - *Currently outside the Project footprint

- Points of Access***
- Proposed Access Point
 - Major Stream Crossing
 - Abandoned Rail Crossing
 - Rail Crossing
 - Transmission Line Crossing
 - Approved Access Route

- ESS Features**
- Resource Use**
- Forestry

Bipole III Transmission Project
Construction Environmental Protection Plan
Construction Section S1
Environmentally Sensitive Site Locations

ESS Group: Forestry

Sec-Seg ID	ESS ID	ESS Name	Location	Start	Stop	UTM Zone	Distance
S1-S30	S1-RUse-343	Shelterbelt	Site: 171 to 172	E-576025 N-5497849	E-576045 N-5497849	14N	19m

Potential Effects:

Removal in area of ROW intersect

Specific Mitigation:

- Carry out construction activities on frozen or dry ground to minimize surface damage, rutting and erosion
- Identify and flag prior to start of work
- If Burning of clearing debris is required it must be conducted during winter months only and ensure that all fires are extinguished prior to spring break-up
- Notify landowner regarding construction activities and schedule, and address concerns prior to start of work
- Use existing access trails, roads or cut lines whenever possible as access routes
- Limit all equipment to project footprint only, where possible
- No damage to Vegetation on the edge of the Right of Way
- No pushing debris into adjacent timber