

Brandon Dispatchable Capacity Project

- Project Components
- Station Location
 - Route Planning Area

- Alternative Route Segments
- Alternative Route Segment

- Map Tile Index (1:32,000)
- Map Series Tile

- Existing Infrastructure
- Transmission Pressure Gas Line
 - Existing Gas Pipeline
 - Existing Transmission Line
 - TC Energy's Canadian Mainline

- Landbase
- Railway
 - Provincial Highway
 - Provincial Road
 - City/Town
 - Rural Municipality

Manitoba Hydro acknowledges that the proposed Brandon Dispatchable Capacity project is located on Treaty 1 and Treaty 2 territory and on the traditional territories of the Anishinaabeg, Anishininewak, Ininew, and Dakota Oyate, and the National Homeland of the Red River Métis.

Coordinate System: UTM Zone 14N NAD83
Data Source: MBHydro, ProvMB, NRCAN
Date: January 13, 2026

0 2 4 Kilometres
0 1 2 Miles

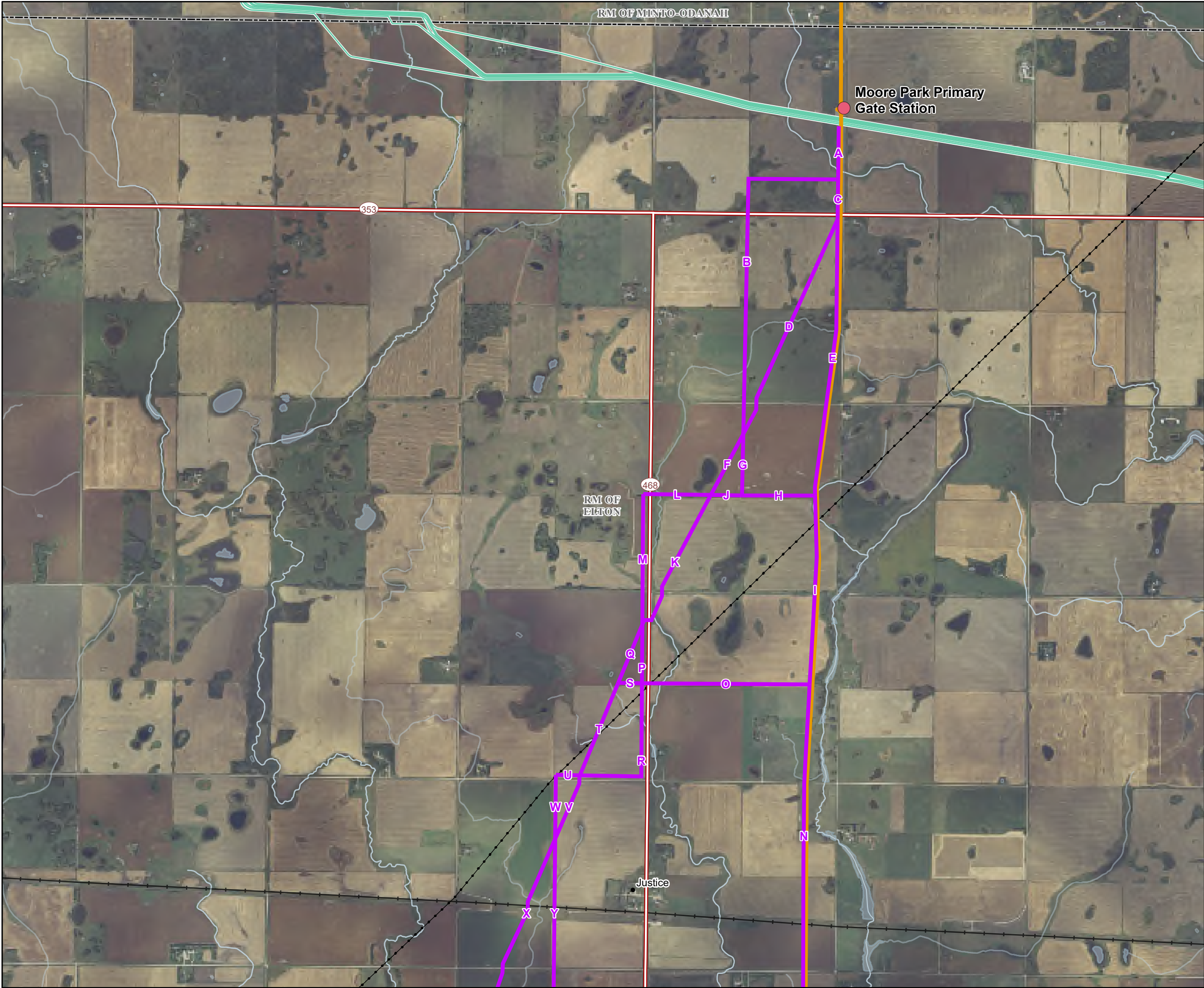
1:100,000

N

Alternative Route Segments Overview

Draft/Confidential: For Discussion Purposes Only

File Location: \\gpcdata\T1\en1\GIS\Orientals\PRJ_Disc\CapSA\analysis\2025\1105_OverviewMap_G2\atlantis\OverviewMap.aprx



Brandon Dispatchable Capacity Project

Project Components

- Station Location

Alternative Route Segments

- Alternative Route Segment

Existing Infrastructure

- Transmission Pressure Gas Line
- Existing Gas Pipeline
- Existing Transmission Line
- TC Energy's Canadian Mainline

Landbase

- Railway
- Provincial Highway
- Provincial Road
- City/Town
- Rural Municipality

Manitoba Hydro acknowledges that the proposed Brandon Dispatchable Capacity project is located on Treaty 1 and Treaty 2 territory and on the traditional territories of the Anishinaabeg, Anishininewak, Ininew, and Dakota Oyate, and the National Homeland of the Red River Métis.

Coordinate System: UTM Zone 14N NAD83
Data Source: MBHydro, ProvMB, NRCAN
Date: January 14, 2026

0 0.55 1.1 Kilometres
0 0.4 0.8 Miles

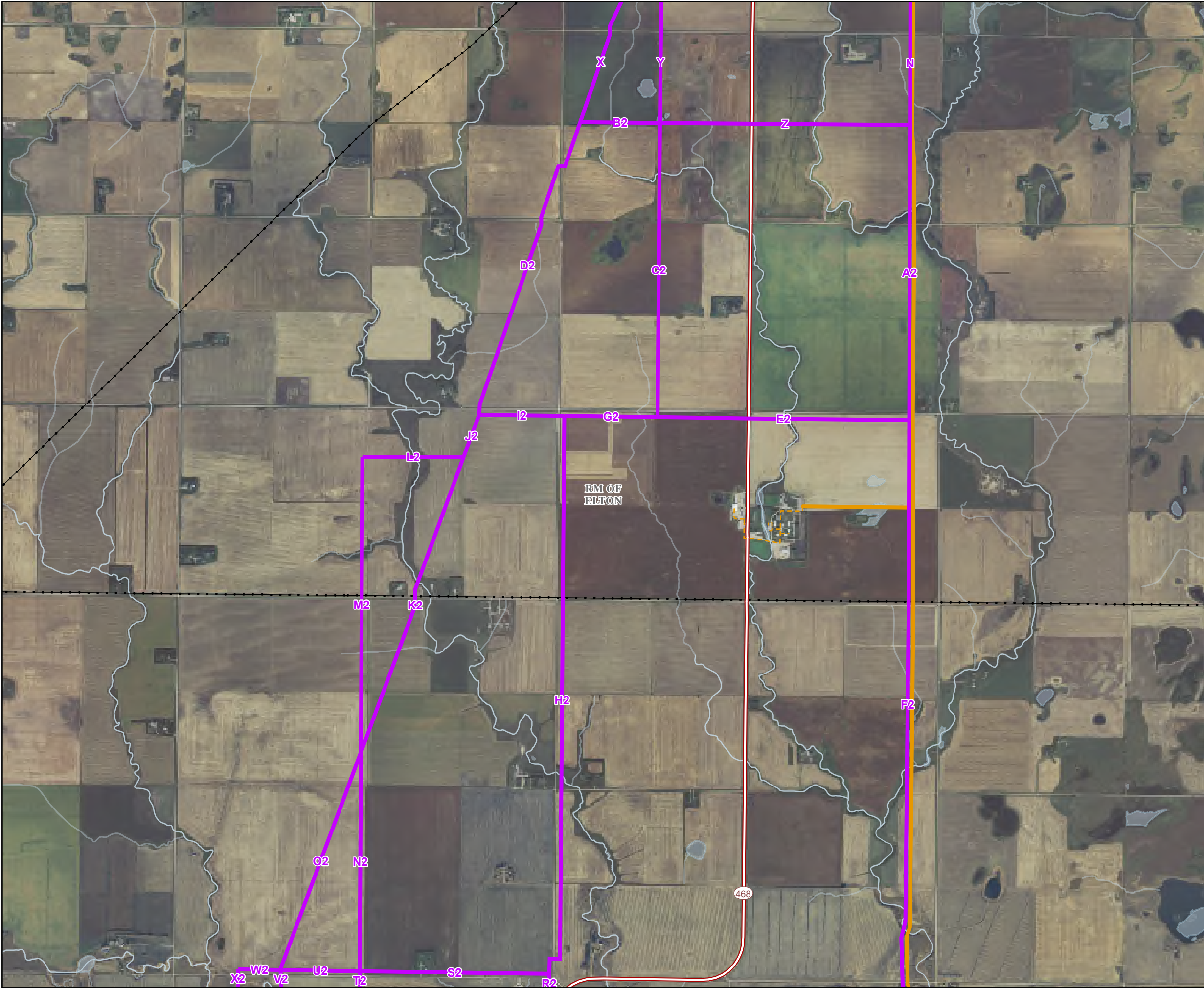
1:32,000

Alternative Route Segments Overview

Draft/Confidential: For Discussion Purposes Only

Map 1

File Location: \\gpcdata\T1en\GIS\Orienta\PRJ_DisCap\GAS\analysis\2025\1105_OverviewMap_G2\outils\OverviewMap.aprx



Brandon Dispatchable Capacity Project

Project Components

- Station Location

Alternative Route Segments

- Alternative Route Segment

Existing Infrastructure

- Transmission Pressure Gas Line
- Existing Gas Pipeline
- Existing Transmission Line
- TC Energy's Canadian Mainline

Landbase

- Railway
- Provincial Highway
- Provincial Road
- City/Town
- Rural Municipality

Manitoba Hydro acknowledges that the proposed Brandon Dispatchable Capacity project is located on Treaty 1 and Treaty 2 territory and on the traditional territories of the Anishinaabeg, Anishininewak, Ininew, and Dakota Oyate, and the National Homeland of the Red River Métis.

Coordinate System: UTM Zone 14N NAD83
Data Source: MBHydro, ProvMB, NRCAN
Date: January 14, 2026

0 0.55 1.1 Kilometres
0 0.4 0.8 Miles

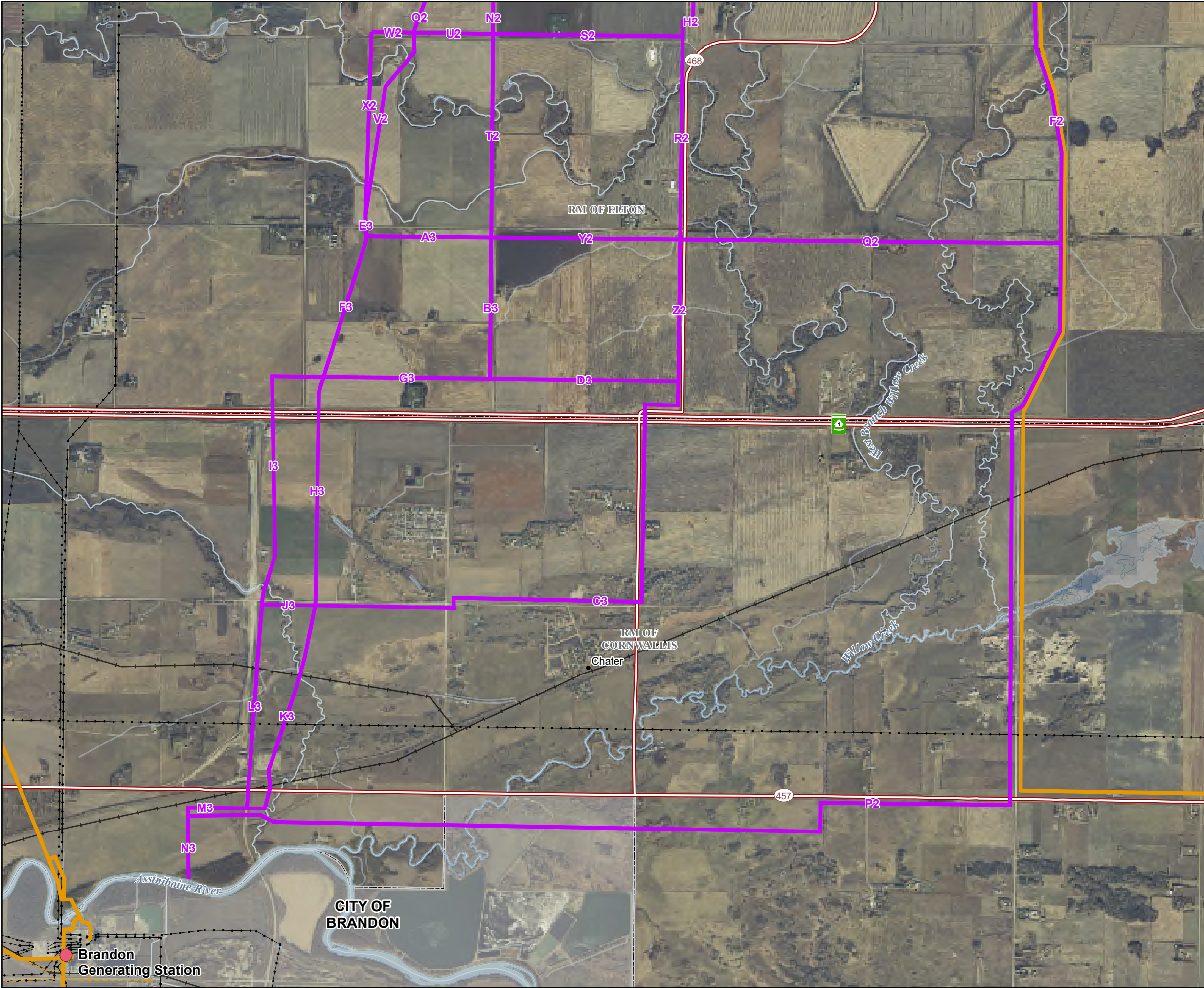
1:32,000

Alternative Route Segments Overview

Draft/Confidential: For Discussion Purposes Only

Map 2

File Location: \\update\T1en\GIS\Orienta\PRJ_Disc\CapGAS\Analysis\2026\1106_OverviewMap_G2\OutlineOverviewMap.aprx



Brandon Dispatchable Capacity Project

Project Components

- Station Location

Alternative Route Segments

- Alternative Route Segment

Existing Infrastructure

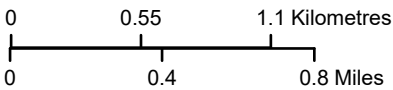
- Transmission Pressure Gas Line
- Existing Gas Pipeline
- Existing Transmission Line
- TC Energy's Canadian Mainline

Landbase

- Railway
- Provincial Highway
- Provincial Road
- City/Town
- Rural Municipality

Manitoba Hydro acknowledges that the proposed Brandon Dispatchable Capacity project is located on Treaty 1 and Treaty 2 territory and on the traditional territories of the Anishinaabeg, Anishininewak, Ininew, and Dakota Oyate, and the National Homeland of the Red River Métis.

Coordinate System: UTM Zone 14N NAD83
Data Source: MBHydro, ProvMB, NRCAN
Date: January 14, 2026



Alternative Route Segments Overview