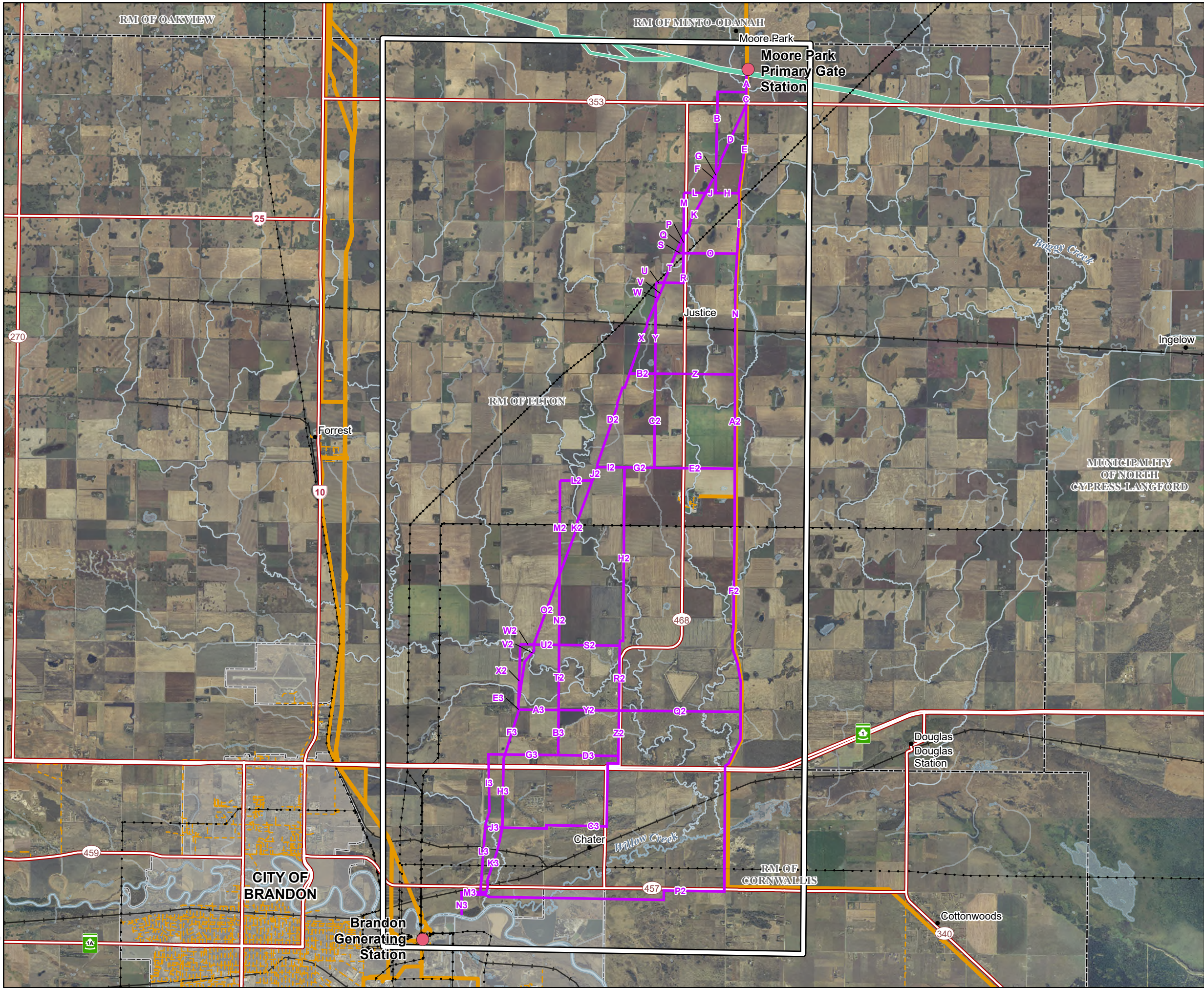


File Location: \\update\T1\GIS\Orienta\PRJ_Disc\CapSA\Analysis\2026\1105_OverviewMap_G2\OutlineOverviewMap.apr OverviewMap.apr



Brandon Dispatchable Capacity Project

- Project Components
- Station Location
 - Route Planning Area

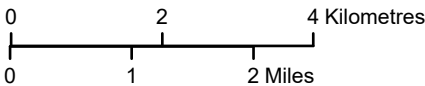
- Alternative Route Segments
- Alternative Route Segment

- Existing Infrastructure
- Transmission Pressure Gas Line
 - Existing Gas Pipeline
 - Existing Transmission Line
 - TC Energy's Canadian Mainline

- Landbase
- Railway
 - Provincial Highway
 - Provincial Road
 - City/Town
 - Rural Municipality

Manitoba Hydro acknowledges that the proposed Brandon Dispatchable Capacity project is located on Treaty 1 and Treaty 2 territory and on the traditional territories of the Anishinaabeg, Anishininewak, Ininew, and Dakota Oyate, and the National Homeland of the Red River Métis.

Coordinate System: UTM Zone 14N NAD83
Data Source: MBHydro, ProvMB, NRCAN
Date: January 14, 2026



Alternative Route Segments Overview

Draft/Confidential: For Discussion Purposes Only