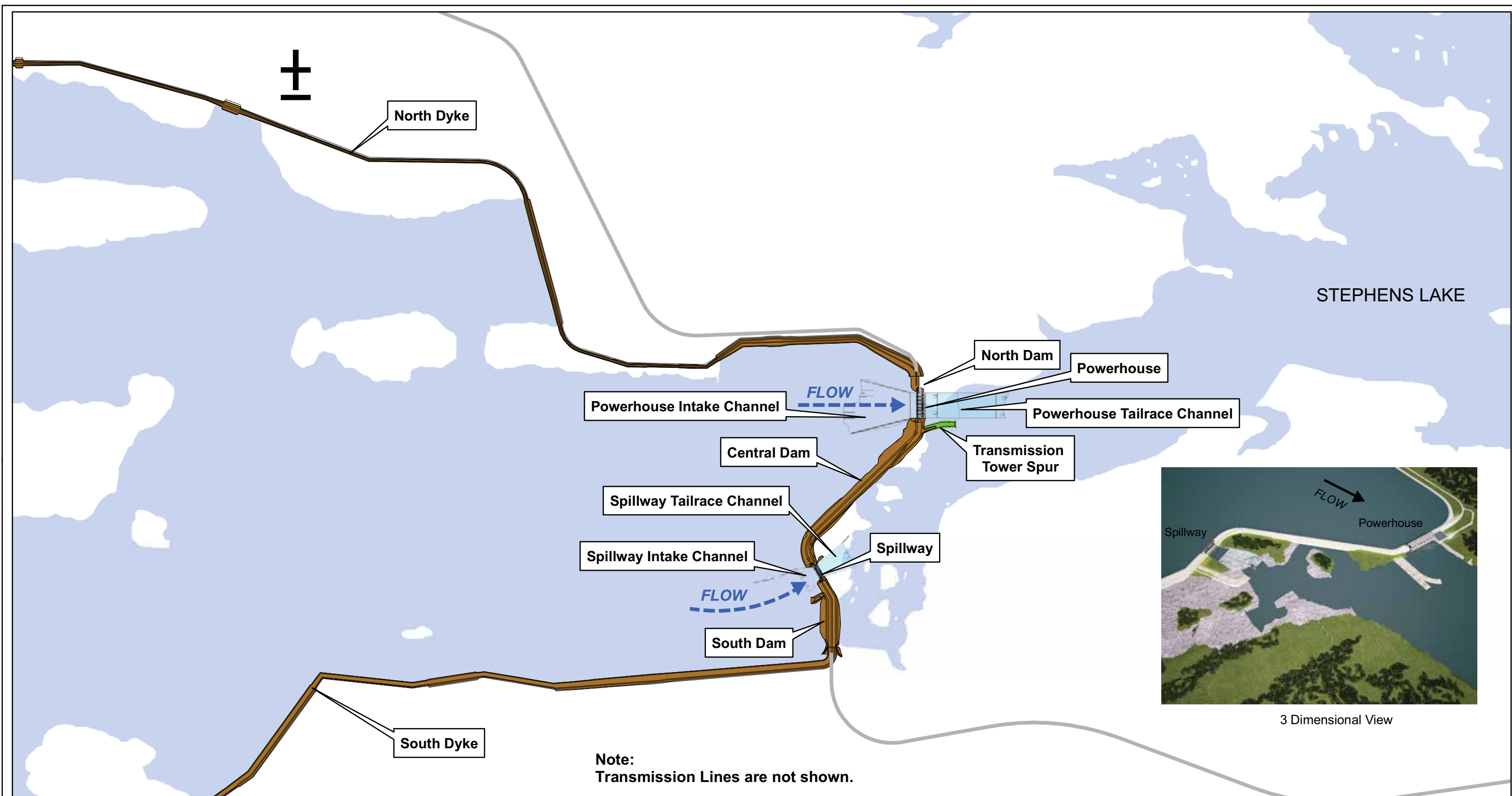
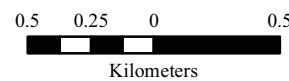
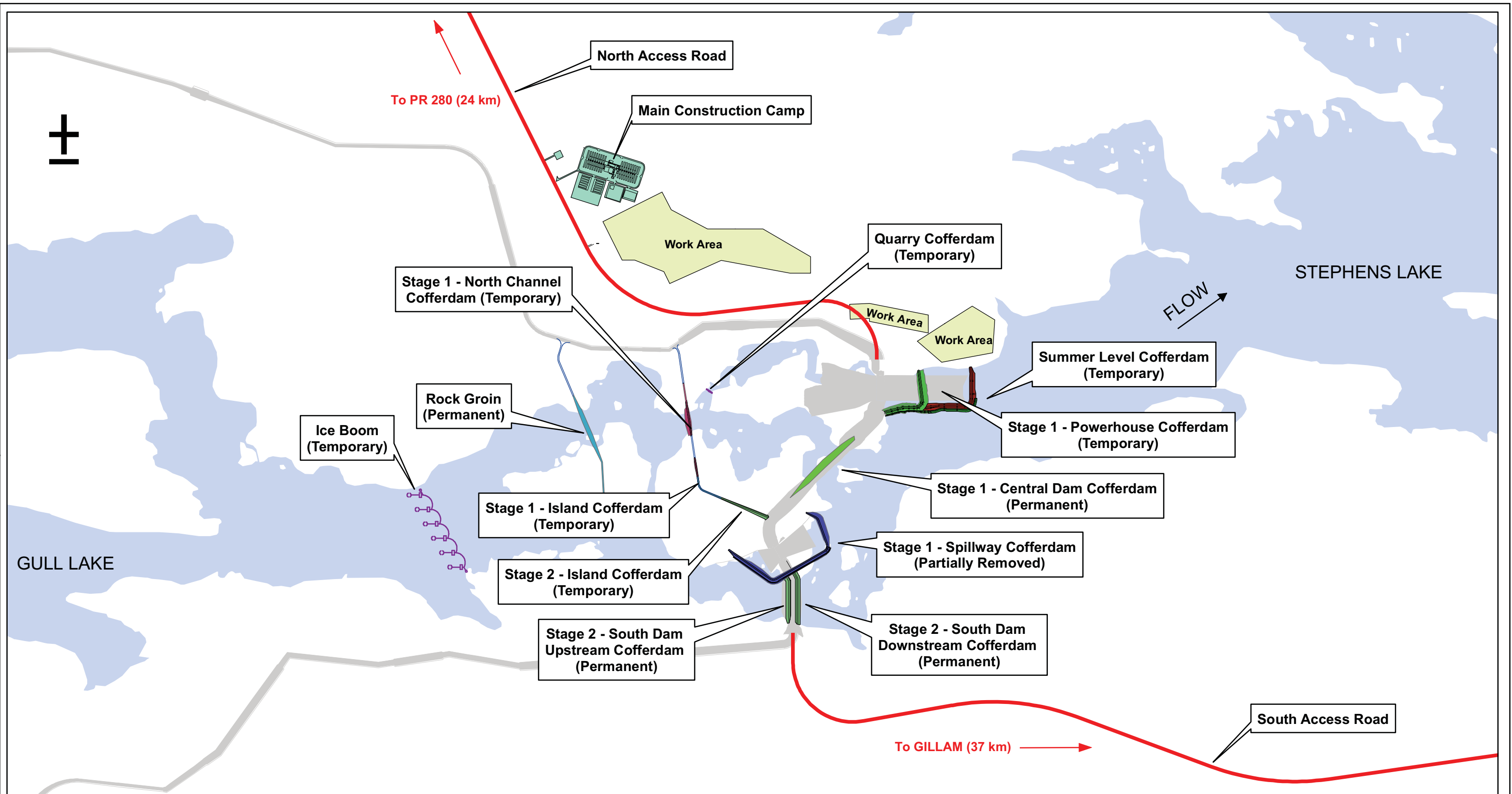


Date: June 12/08

GENERAL LOCATION PLAN
FIGURE 1

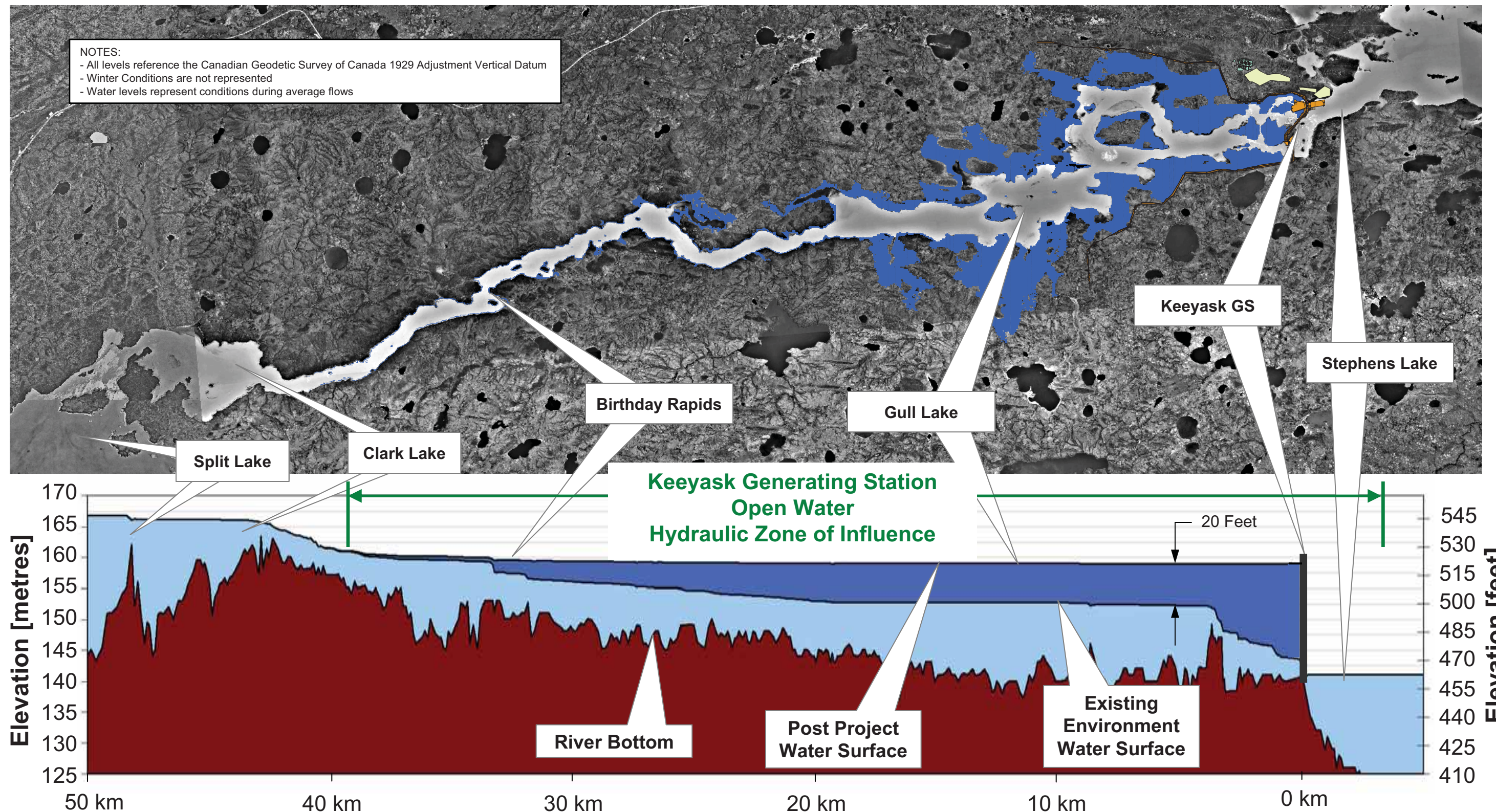


3 Dimensional View



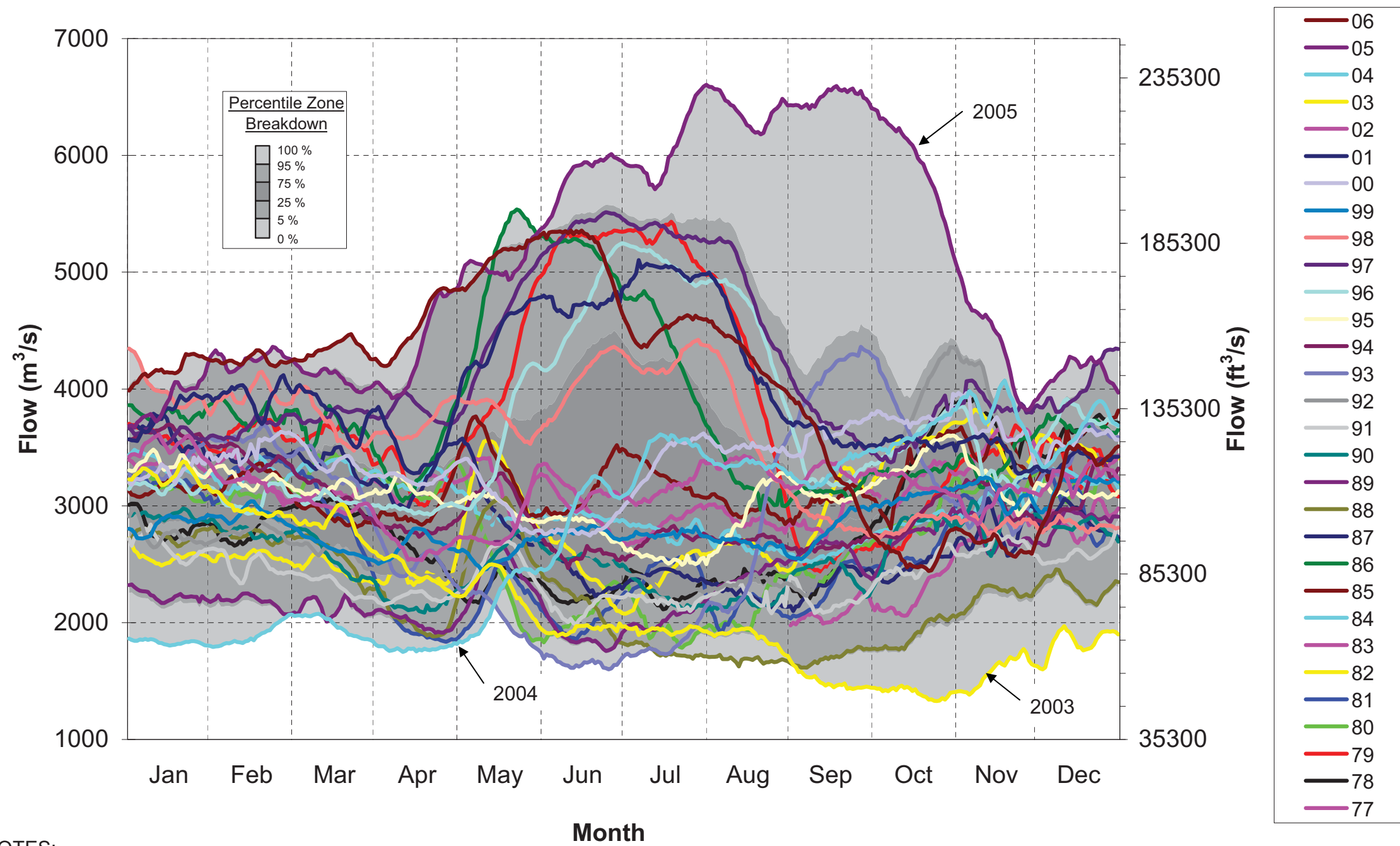
Date: June 12/08

GENERAL ARRANGEMENT OF
SUPPORTING INFRASTRUCTURE
FIGURE 3



Date: June 12/08

**WATER SURFACE PROFILES
EXISTING ENVIRONMENT AND POST PROJECT
FIGURE 4**

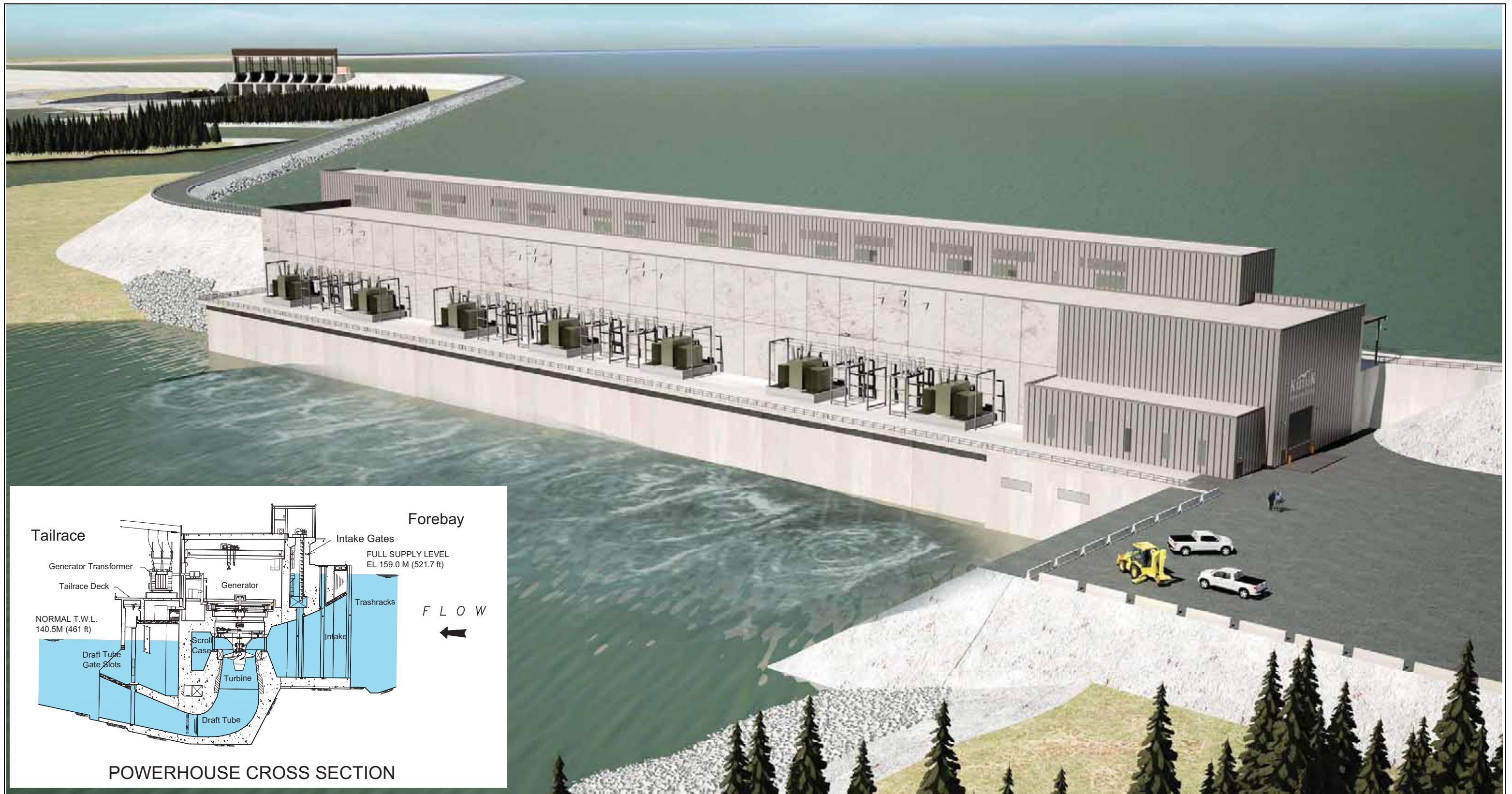


- NOTES:
- Source: Split Lake Daily Outflow
 - Percentile zone data Based on daily data.
 - Period of record: Sept. 1977 to Dec. 2006
 - Conversion: 1 foot = 0.3048 meters



Date: June 12/08

HISTORICAL RIVER FLOW REGIME
AT KEEYASK GS SITE
FIGURE 5



KEEYASK

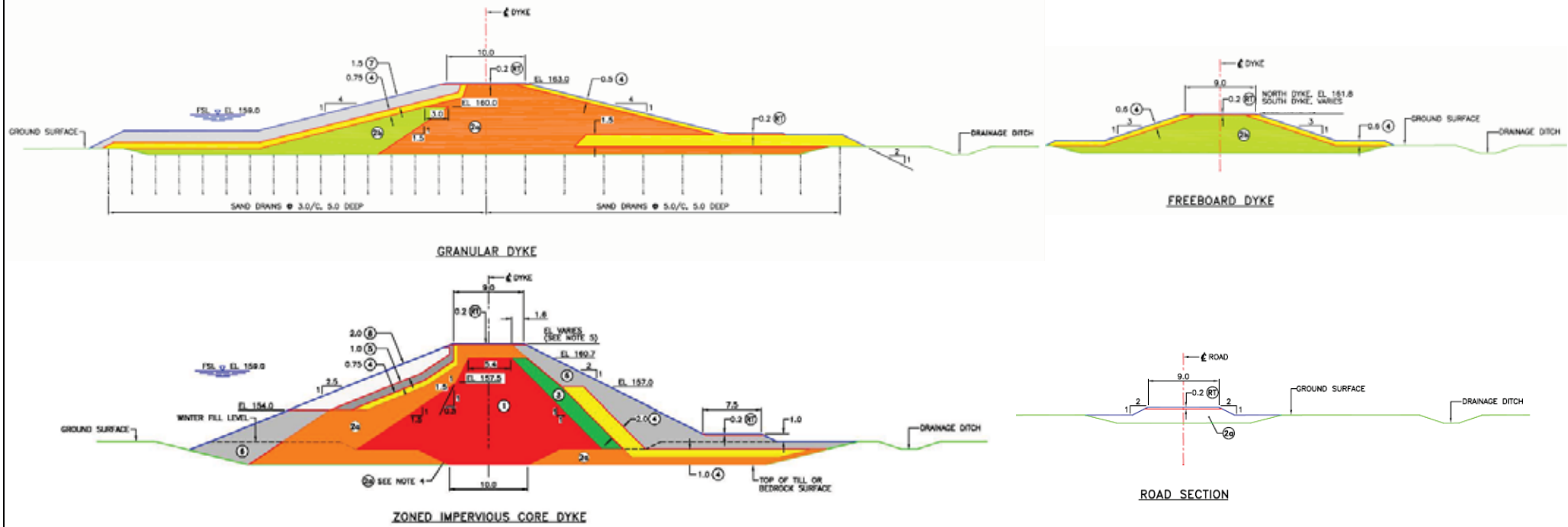
Date: June 12/08

POWERHOUSE COMPLEX

FIGURE 6



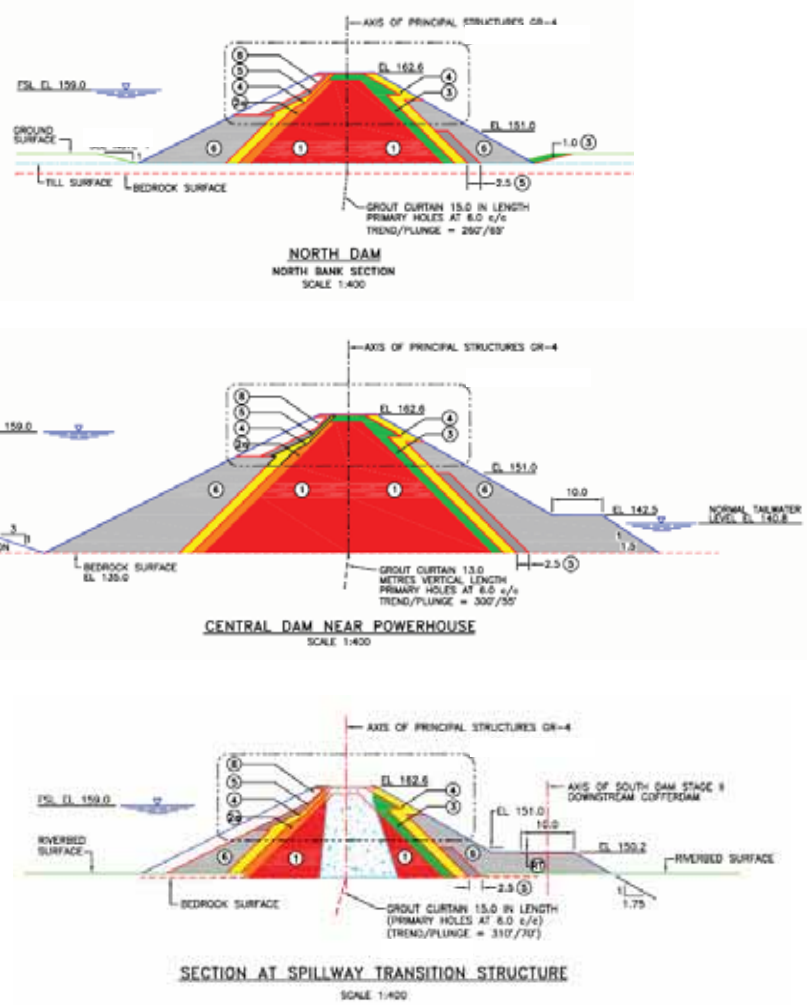
SAMPLE DYKE CROSS SECTIONS



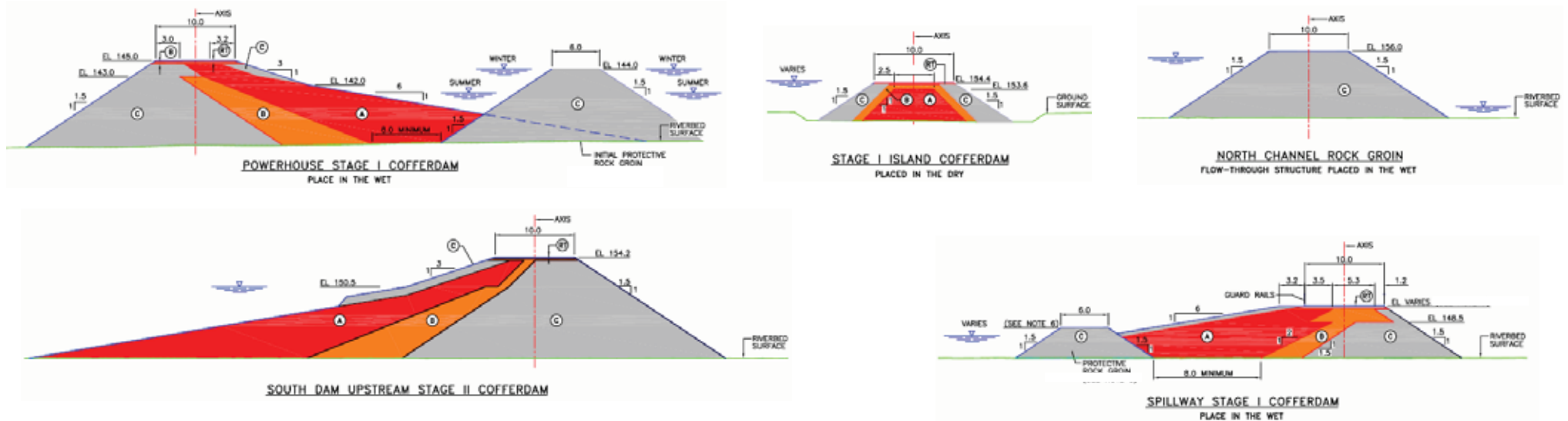
LEGEND:

- ① A IMPERVIOUS FILL
- ② B PERVIOUS GRANULAR FILL
- ③ C SEMI-PERVIOUS GRANULAR FILL
- ④ FILTER
- ⑤ TRANSITION - CRUSHED ROCK
- ⑥ RIPRAP BEDDING
- ⑦ C RIPRAP (SEE NOTE 1)
- ⑧ RIPRAP
- ⑨ RT ROAD TOPPING
- W WATER LEVEL

SAMPLE DAM CROSS SECTIONS

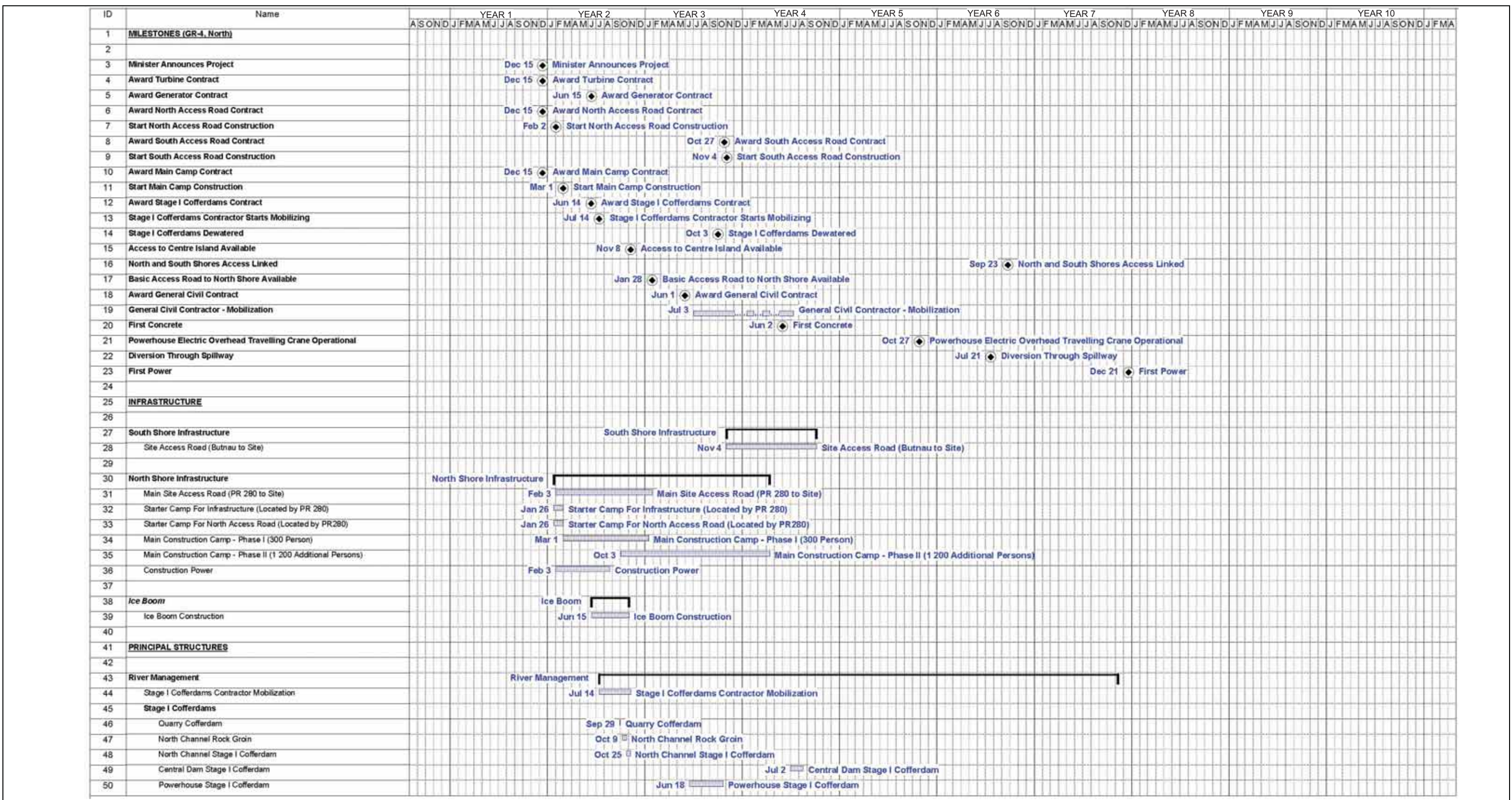


SAMPLE COFFERDAM CROSS SECTIONS



Date: June 12/08

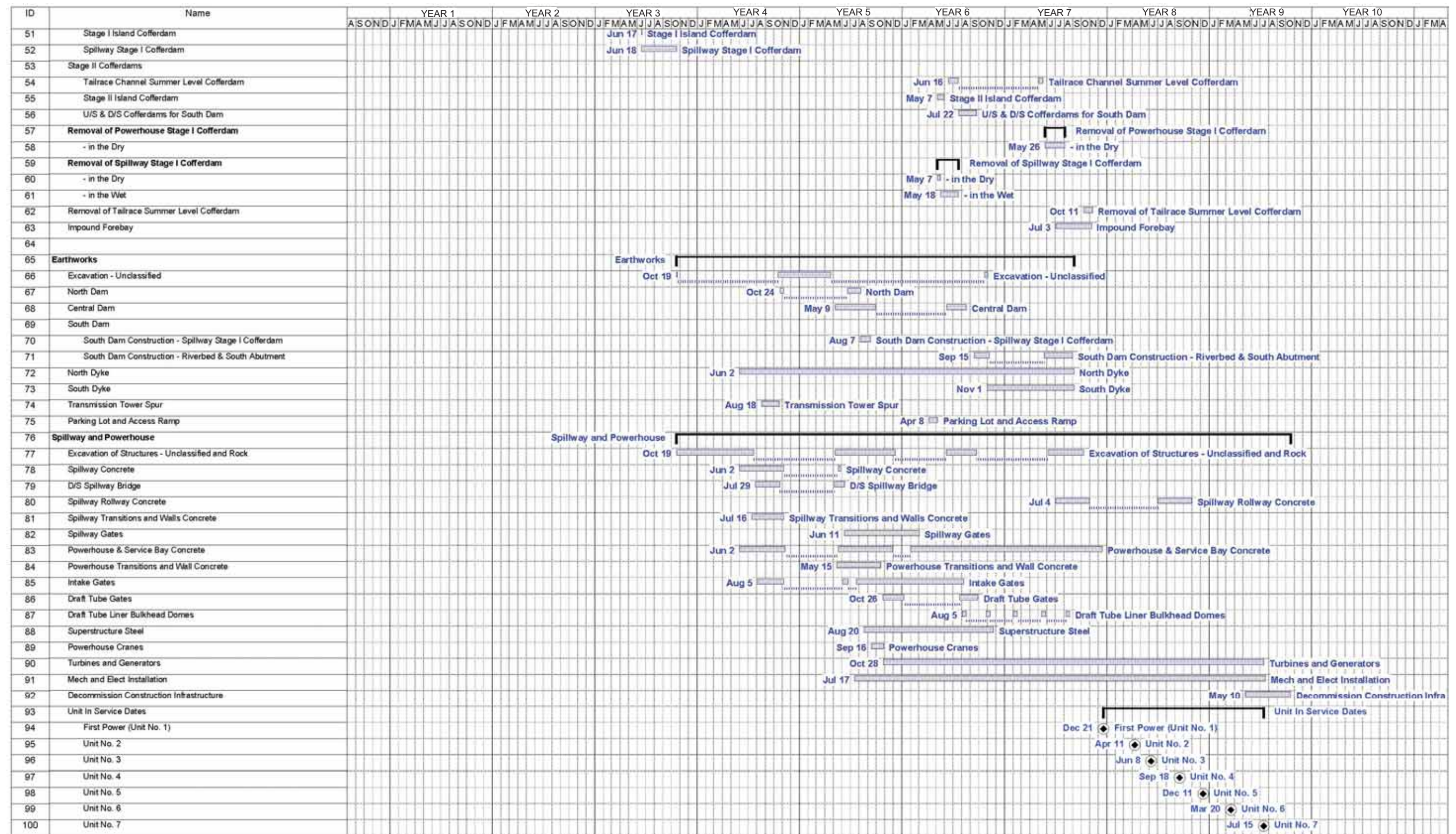
DAM, DYKE, AND COFFERDAM
CROSS SECTIONS
FIGURE 8



Date: June 12, 2008

Schedule: GN4_ConstrSmrySchd_D1_20070531_KJF_NR_Rev3.mpp

PRELIMINARY KEEYASK PROJECT
CONSTRUCTION SCHEDULE
FIGURE 9A



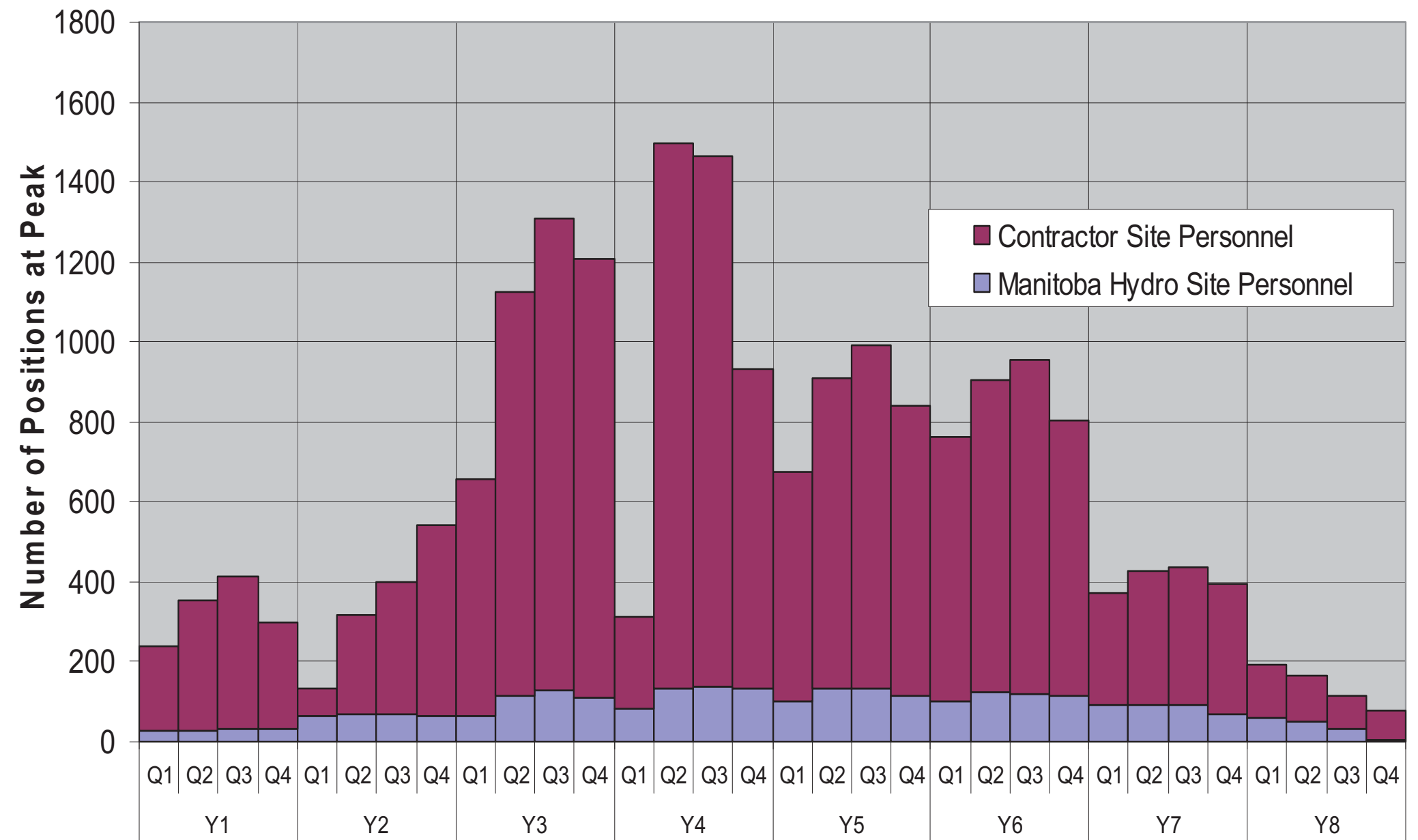
Date: June 12, 2008

Schedule: GN4_ConstrSmrySchd_D1_20070531_KJF_NR_Rev3.mpp

PRELIMINARY KEEYASK PROJECT CONSTRUCTION SCHEDULE FIGURE 9B

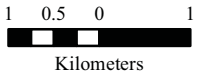
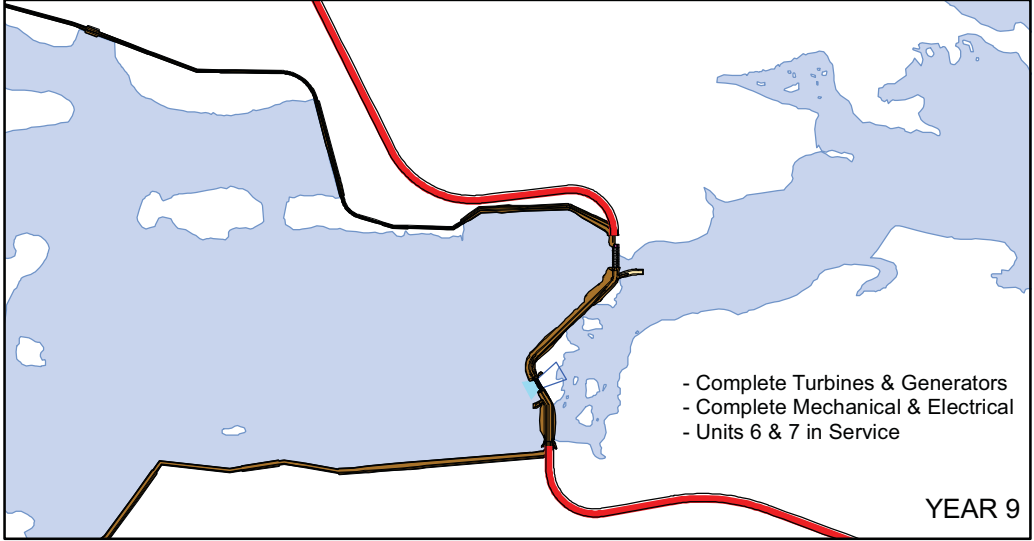
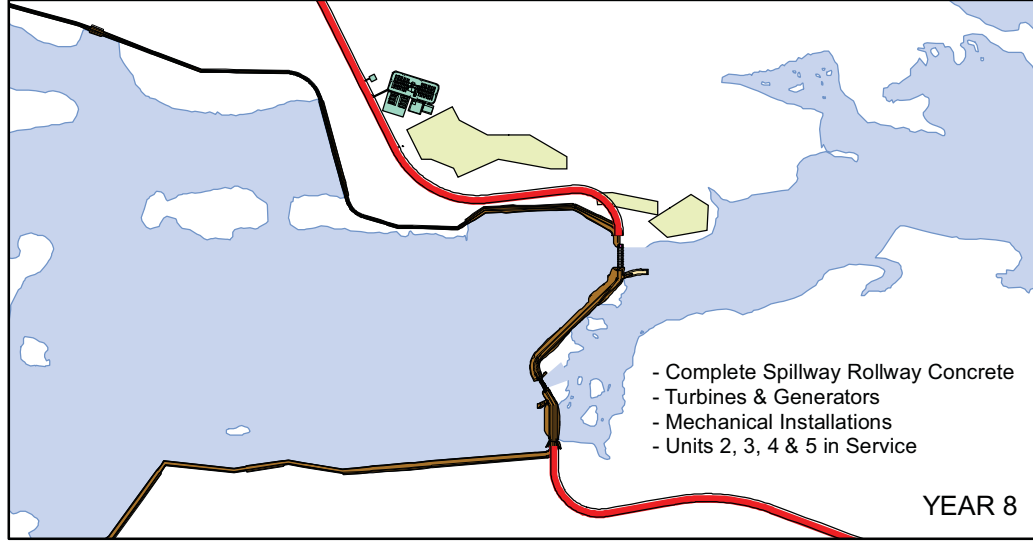
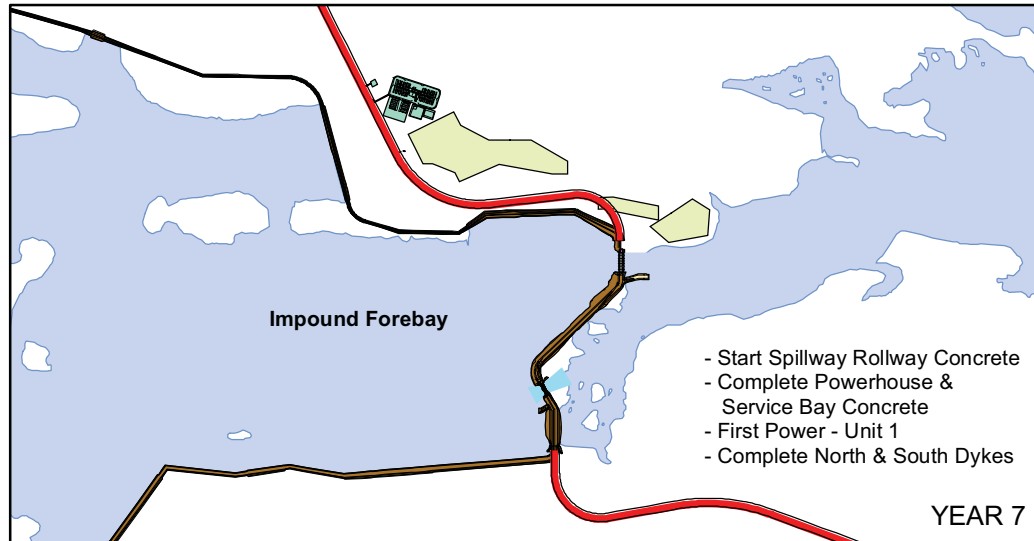
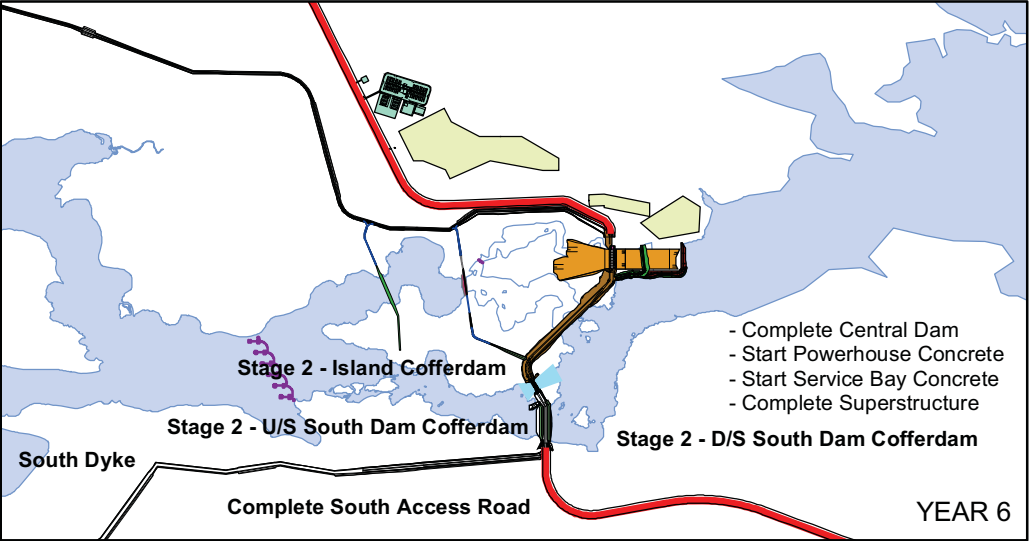
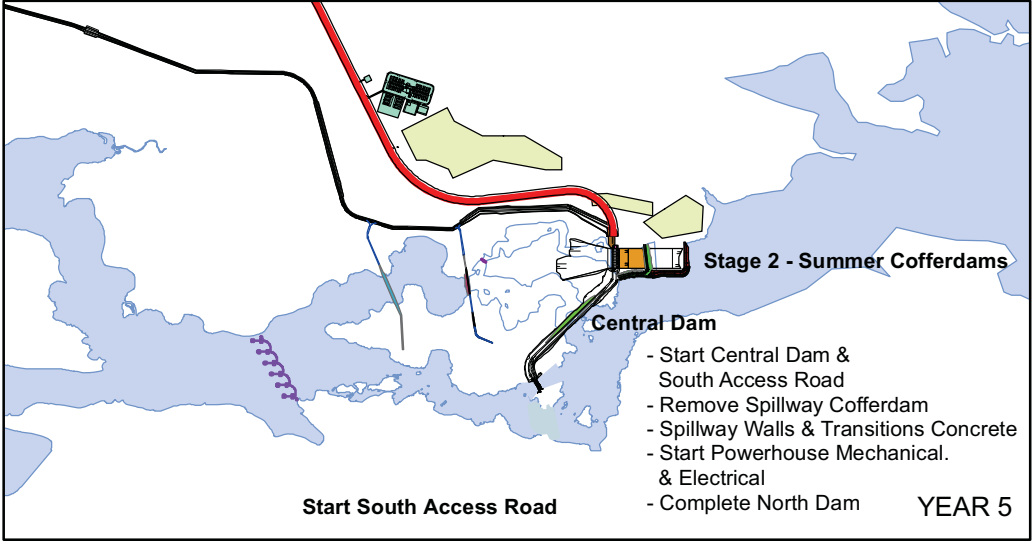
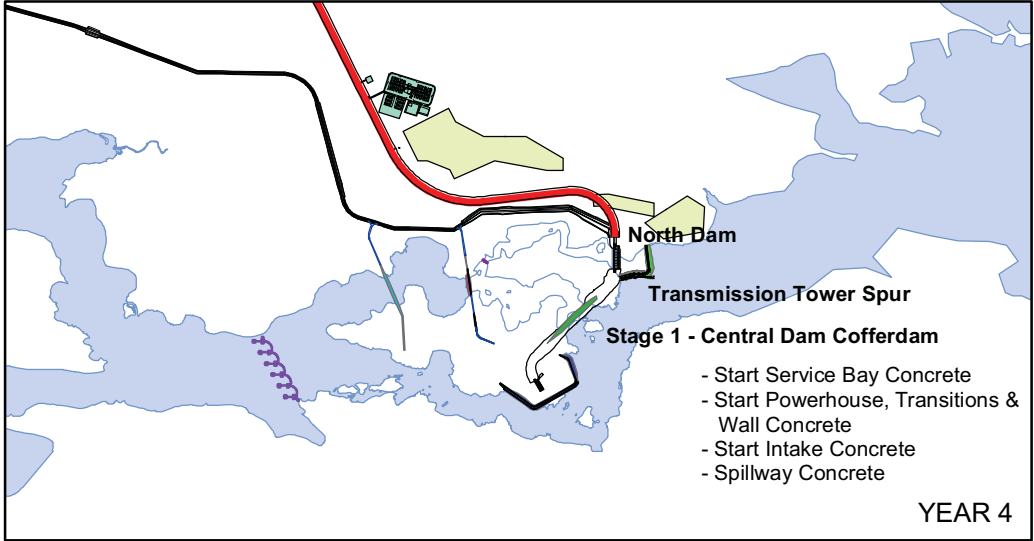
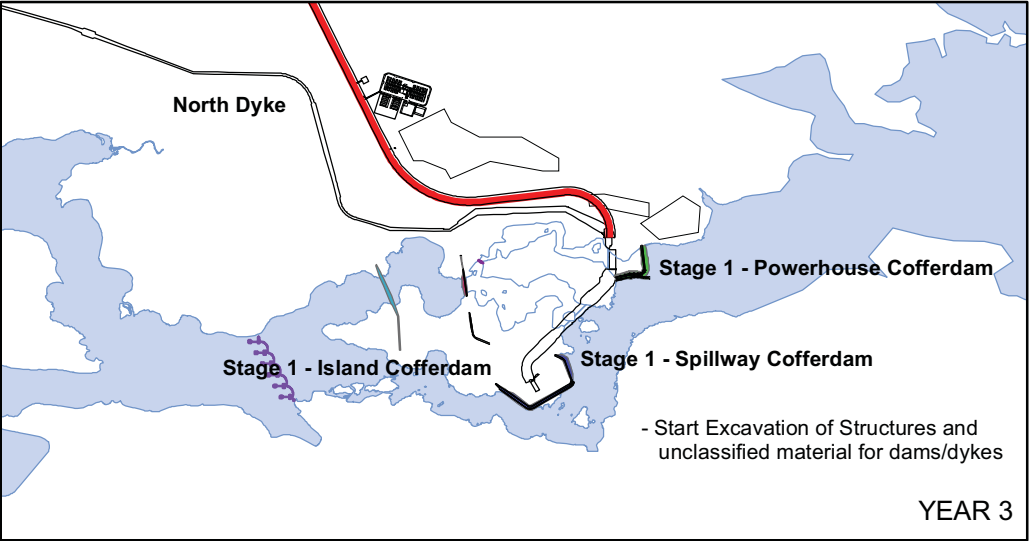
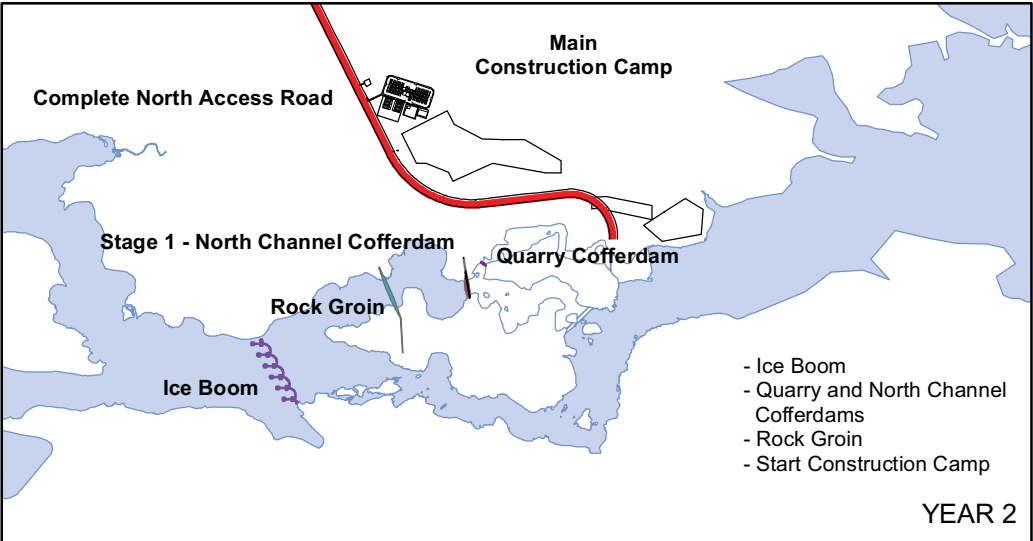
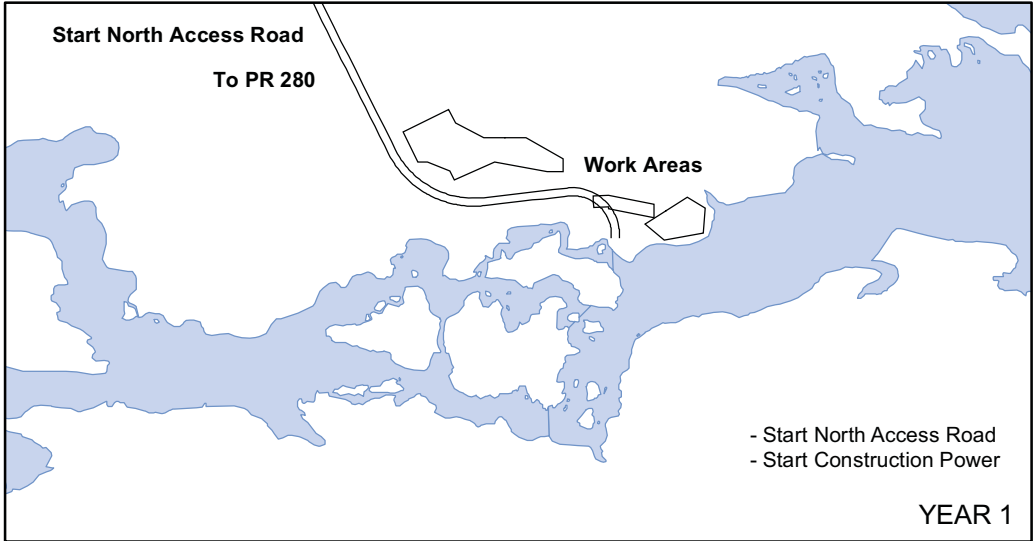
Notes:

- 1) The forecasts illustrated are based on Acres and Manitoba Hydro's estimates of manpower and a construction schedule based on a December, 2017 first unit in-service date.
- 2) The bar chart represents an estimate based on current regulations, present project plans, and experience with similar projects. Contractors will determine specific job requirements when the project is being built. Actual employment requirements will vary from the estimate presented above.
- 3) "Peak Site Workforce" refers to the maximum number of people on site, within the quarter specified.
- 4) The bar chart illustrates contractor site personnel (including supervisory and management positions) and Manitoba Hydro site personnel. The forecasts do not include workforce for the construction of Substations and Transmission Lines.



Date: June 12/08

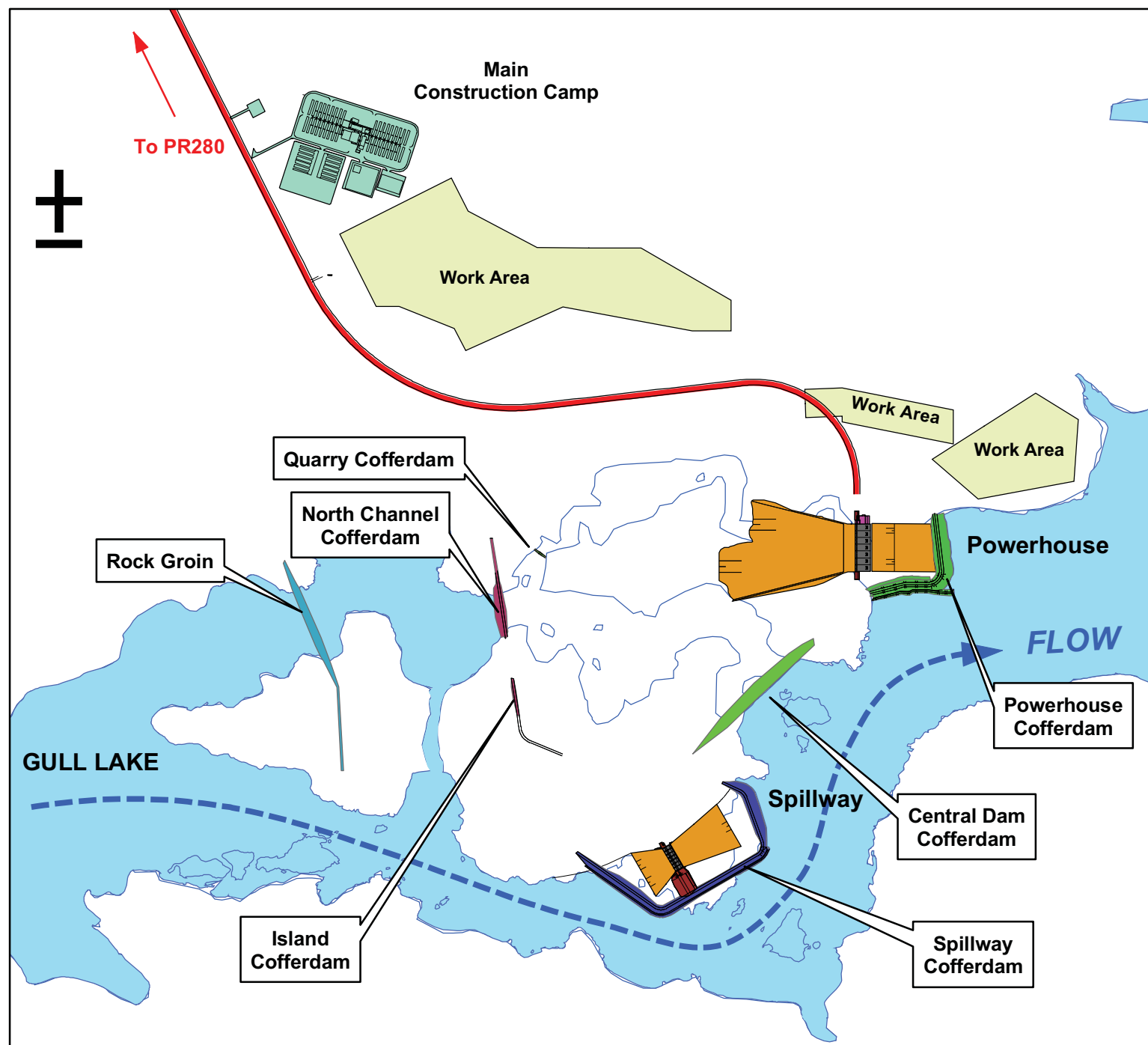
**ESTIMATED PEAK SITE CONSTRUCTION
WORKFORCE BY QUARTER
FIGURE 10**



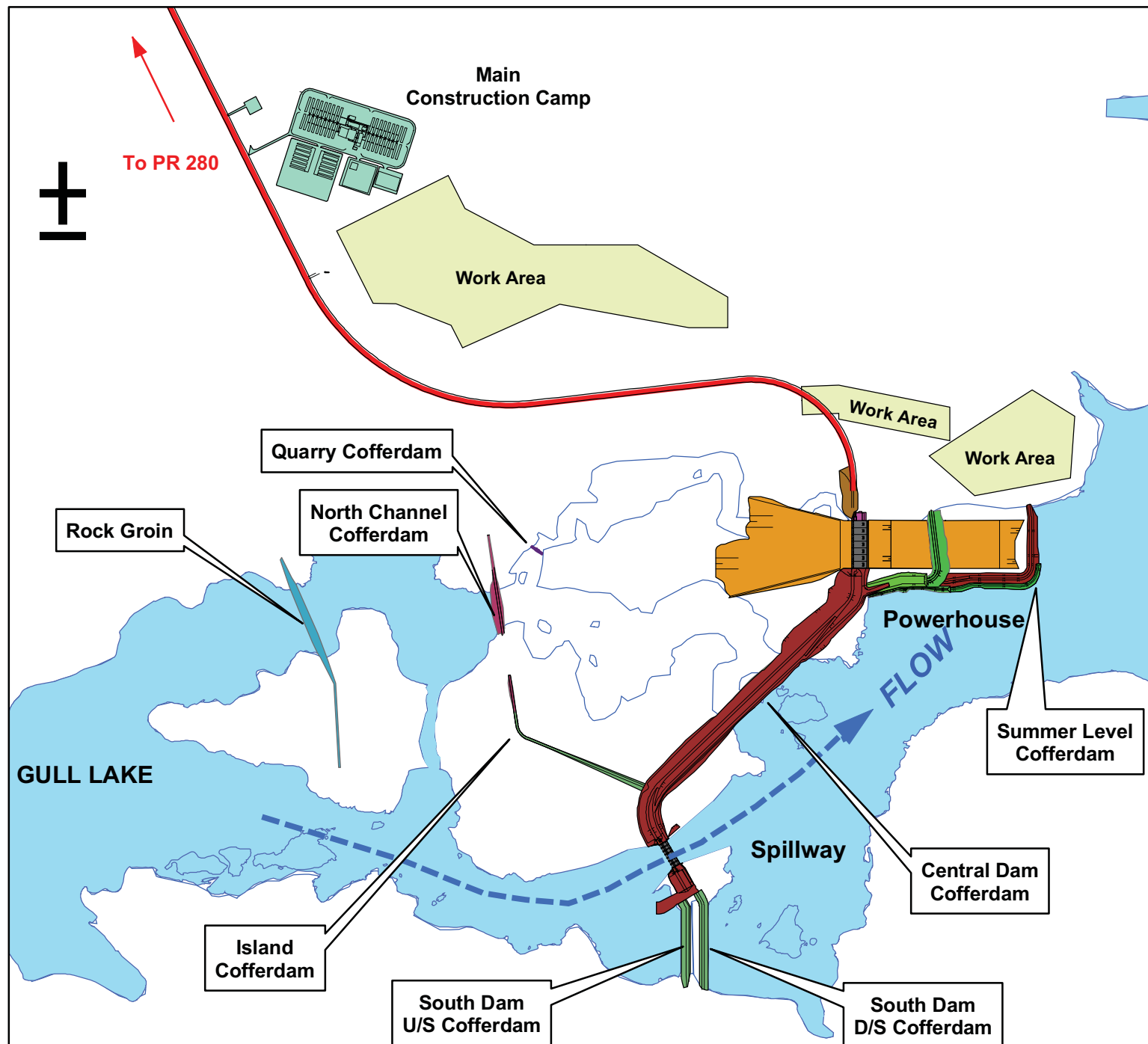
Date: June 12/08

CONSTRUCTION SEQUENCE

FIGURE 11

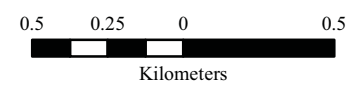


STAGE 1 DIVERSION
YEAR 2 to YEAR 5



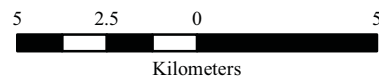
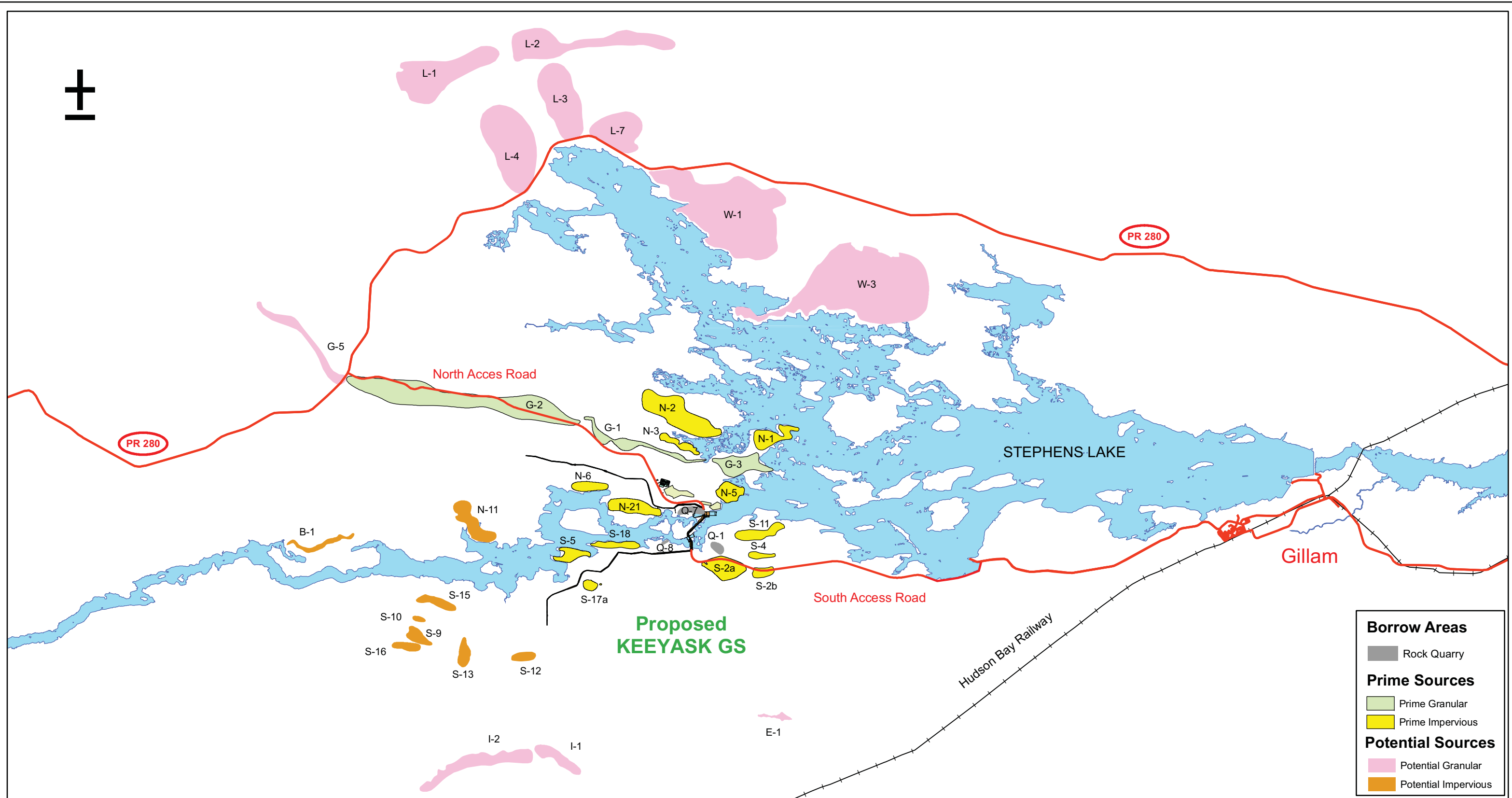
STAGE 2 DIVERSION
YEAR 5 to YEAR 6

STAGE 1 AND STAGE 2 DIVERSION



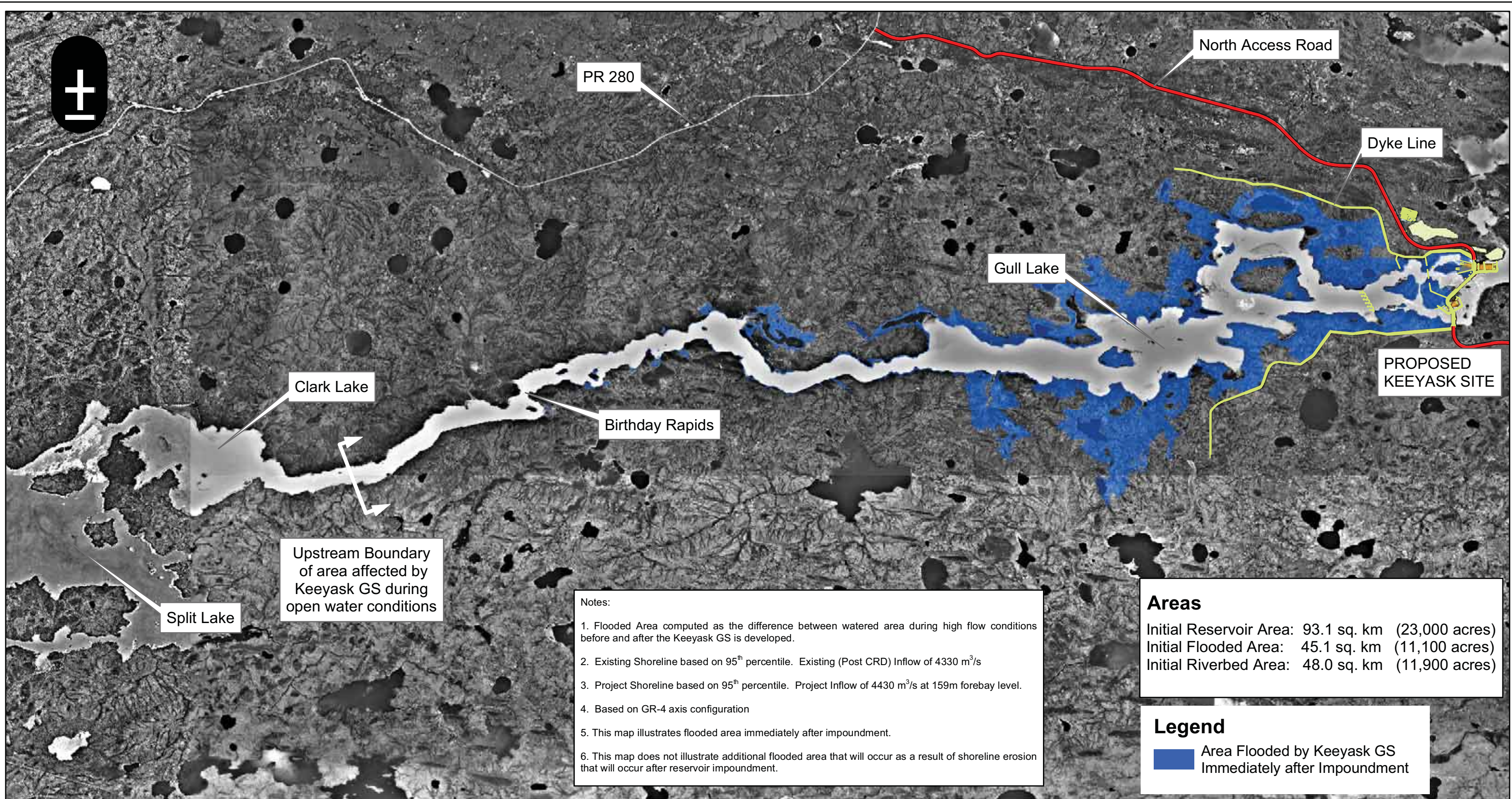
Date: June 12/08

FIGURE 12



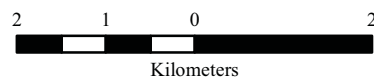
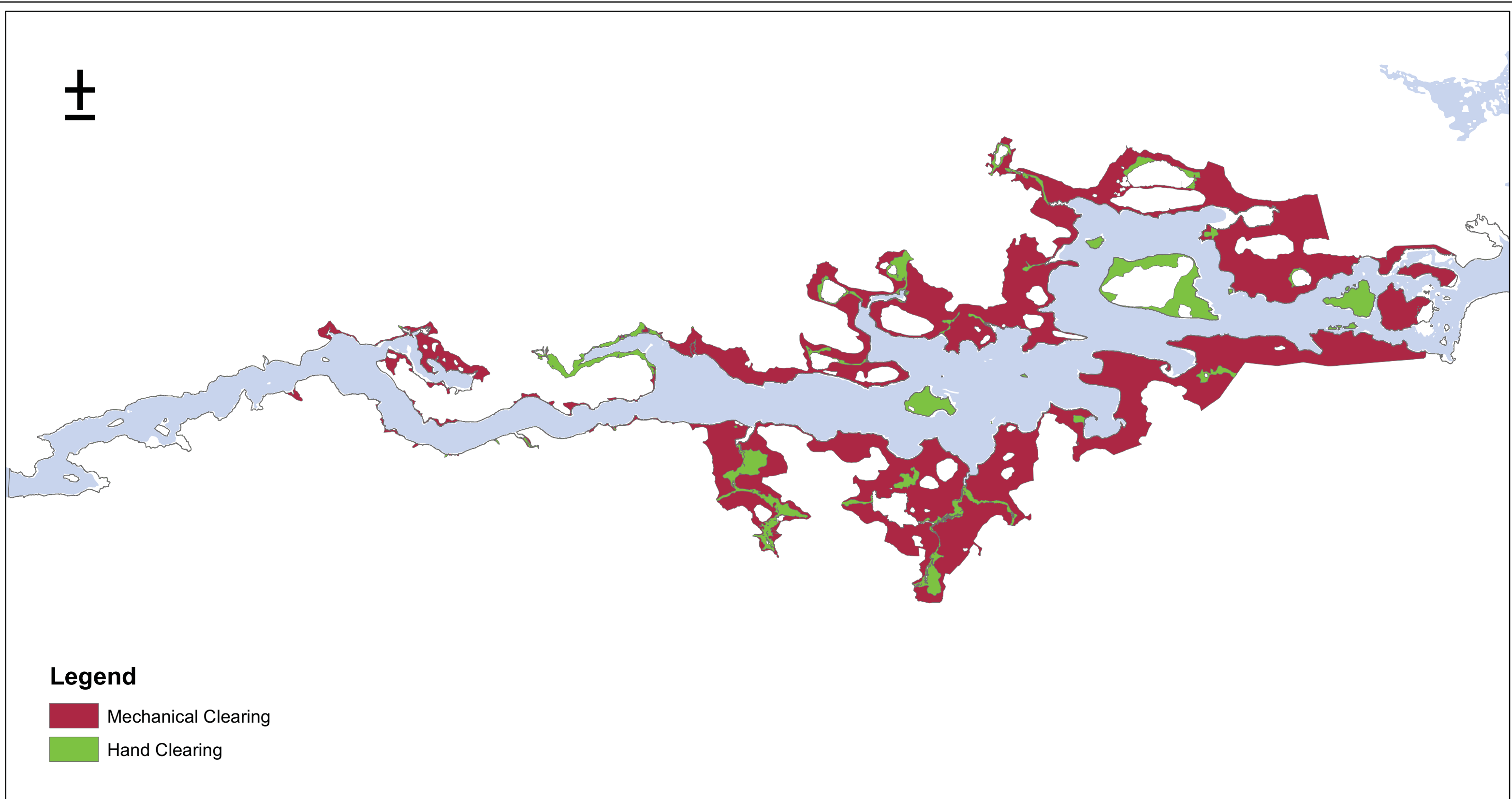
Date: June 12/08

POTENTIAL MATERIAL SOURCES/
BORROW AREAS
FIGURE 13



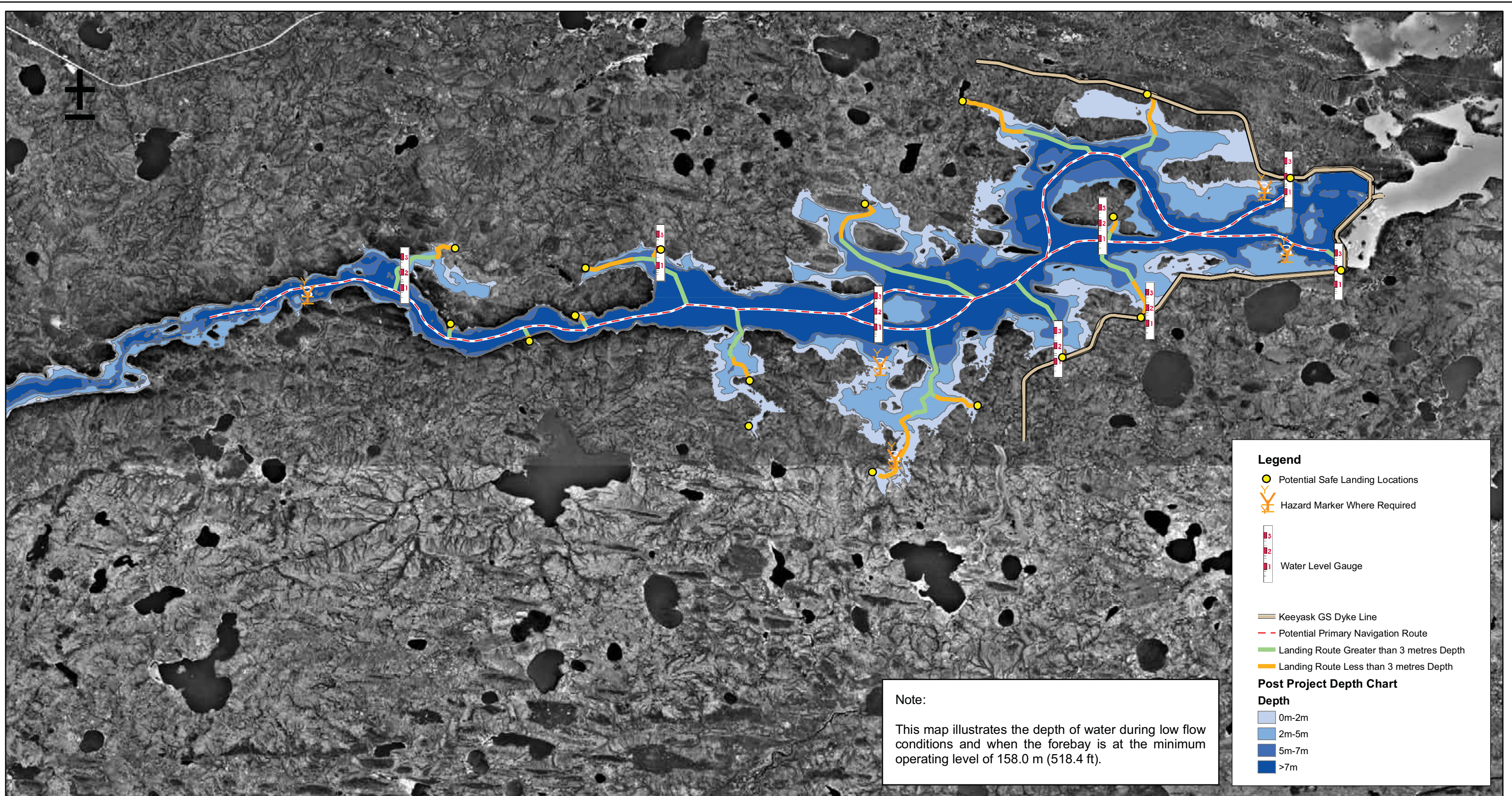
Date: June 12/08

AREA FLOODED BY
KEEYASK GS
FIGURE 14



Date: June 12/08

RESERVOIR CLEARING PLAN AREAS TO BE CLEARED PRIOR TO FLOODING FIGURE 15



KEEYASK

2.5 1.25 0 2.5
Kilometers

Date: June 12/08

PRELIMINARY DEPTH CHART, TRAVEL ROUTES AND SAFE LANDING LOCATIONS FIGURE 16