

Manitoba-Minnesota Transmission Project

Clearing Management Plan

August 2019

Prepared by:

Licensing and Environmental Assessment Department

Manitoba Hydro

Preface

Manitoba Hydro would like to acknowledge that this Project will be located in Treaty One Territory, the traditional territories of the Anishinabe, Cree, and Dakota people and the homeland of the Metis Nation.

This document presents the Clearing Management Plan (the Plan) for the construction of the Manitoba-Minnesota Transmission Project (the Project). It is intended to provide information and instruction to Manitoba Hydro employees as well as contractors, regulators and members of the public.

The Plan provides regulatory context as well as general considerations and guidance pertinent to right of way (ROW) vegetation clearing in the Project area within Manitoba.

Manitoba Hydro employees and contractors are encouraged to contact the onsite Manitoba Hydro Environmental Inspector/Officer if they require information, clarification or support. Regulators and the Public are to direct any inquiries about this Plan to:

Manitoba Hydro
Licensing and Environmental Assessment Department
360 Portage Avenue
Winnipeg, MB
Canada R3C 0G8
1-877-343-1631
LEAProjects@hydro.mb.ca

Document Owner
 Licensing and Environmental Assessment Department
 Transmission Planning and Design Division
 Transmission Business Unit
 Manitoba Hydro

Version – Final 1.01

List of Revisions

Number	Nature of revision	Location	Revised by	Date
Draft	Update Table 3	Page 22	Manitoba Hydro	20181127
Draft	Update of Figure 1-1	Page 2	Manitoba Hydro	20181118
Draft	Added a statement regarding access planning and how it “minimizes the needs for site rehabilitation and invasive species management as well as minimizing the impacts on cultural and heritage resources.	Page 3	Manitoba Hydro	20181118
Draft	Updated description of requirements for woody debris disposal provided in Section 3.1 Woody Debris Disposal Methods.	Page 10	Manitoba Hydro	20181127
Draft	Updated quantities provided in Table 3 Estimated Clearing Prescription Types by Construction Section	Page 21	Manitoba Hydro	20181127
Draft	ADDED ENGAGEMENT ACTIVITIES	SECTION 1.1	MANITOBA HYDRO	20190211
Draft	ADDED SUMMARY OF CONSULTATION APPENDIX	APPENDIX A	MANITOBA HYDRO	20190211
Draft	ADDED ACKNOWLEDGEMENT TO PREFACE	PAGE II	MANITOBA HYDRO	20190211
Draft	TABLE 3 UPDATED	PAGE 22	MANITOBA HYDRO	20190211
Draft	Update of Table 3	Page 22	MANITOBA HYDRO	20190214
Draft	Updated sections to clearly reference connection to Golden-winged Warbler Habitat	Section 1.0 and 1.2	MANITOBA HYDRO	20190523

List of Revisions

Number	Nature of revision	Location	Revised by	Date
	management Plan			
1.0	Added reference to Forest Use and Management Regulation	Section 3.8	MANITOBA HYDRO	20190523
1.01	Clearing area table areas updated	Table 3	MANITOBA HYDRO	20190809

Table of contents

1.0	Introduction	2
1.1	Commitment to environmental protection and indigenous engagement	3
1.2	Purpose and objectives.....	4
1.3	Commitments.....	5
1.4	Roles and responsibilities	5
2.0	Regulatory context.....	9
3.0	Implementation.....	12
3.1	Woody debris disposal methods.....	12
3.2	Danger trees.....	12
3.3	Forest health considerations.....	13
3.4	Vegetation retention	13
3.5	Riparian buffers.....	14
3.6	Line of sight buffers.....	14
3.7	Other environmentally sensitive sites with mitigation measure for vegetation retention.....	14
3.8	Timber salvage	14
3.8.1	Scaling plan.....	15
3.8.2	Firewood	15
3.8.3	Processing of timber salvage.....	15
3.9	General mitigation measures	16
3.10	Flagging/signage.....	16
3.11	Clearing Prescriptions.....	16
3.12	Training and documentation	23
3.12.1	Education and training.....	23
3.12.2	Record keeping and reporting.....	24
4.0	Communication.....	25
5.0	Inspection.....	26

List of Appendices

Appendix A: Summary of Consultation	28
---	----

List of Tables

Table 1: Key roles and responsibilities.....	6
Table 2: Clearing prescription types.....	18
Table 3: Estimated clearing prescription types by construction section.....	23

List of Figures

Figure 1: Transmission Environmental Protection Program.....	3
Figure 2: Environmental communication reporting structure.....	8

1.0 Introduction

Consistent with its corporate Environmental Management Policy, Manitoba Hydro has committed within the Manitoba - Minnesota Transmission Project (the Project) Environmental Impact Statement (EIS) to developing a clearing management plan (CMP) as part of a larger suite of mitigation measures to minimize potential negative environmental and socio-economic effects.

Manitoba Hydro's Environmental Protection Program (EPP) provides the framework for the delivery, management and monitoring of environmental and socio-economic protection measures that satisfy corporate policies and commitments, regulatory requirements, environmental protection guidelines and best practices, and input during the Public Engagement Process (PEP) and First Nation and Metis Engagement Process (FNMEP). The Program describes how Manitoba Hydro is organized and functions to deliver timely, effective, and comprehensive solutions and mitigation measures to address potential environmental effects. The CMP is a complementary document to the Golden-winged Warbler Habitat Management Plan and the Construction Environmental Protection Plan and a component of the EPP as illustrated in Figure 1.

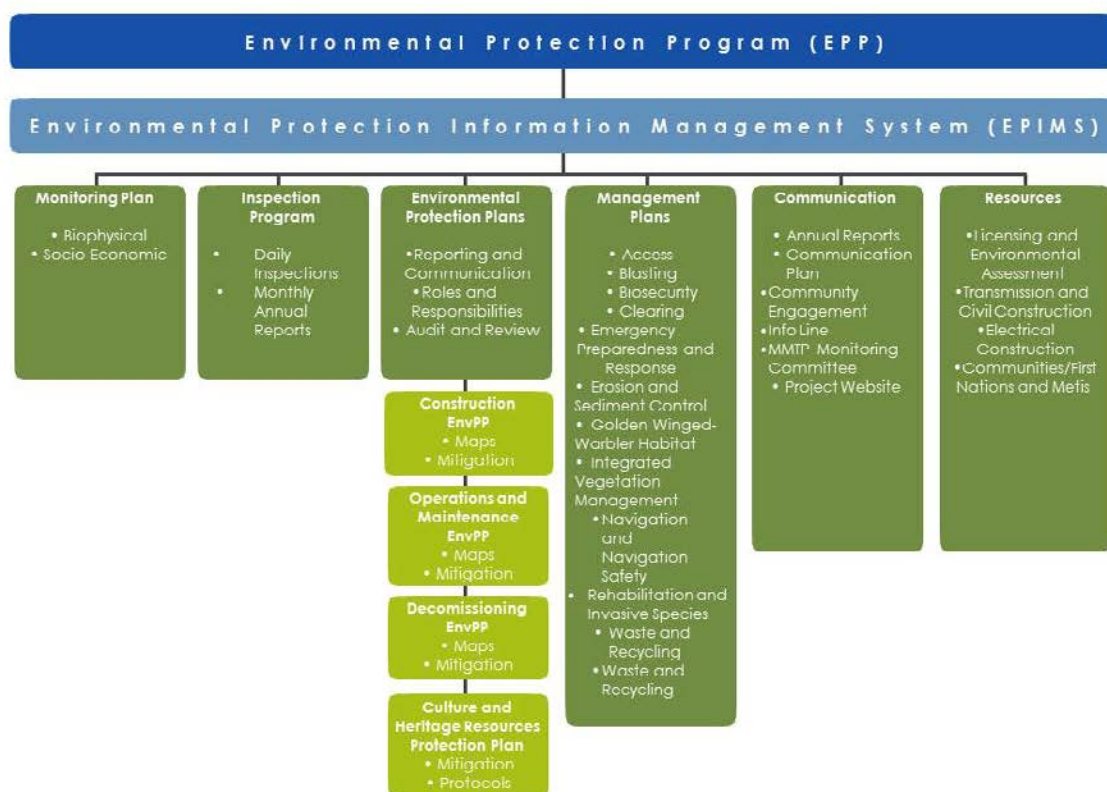


Figure 1: Transmission Environmental Protection Program

In this document clearing management for the Project is considered only during the construction phase of the development; an Integrated Vegetation Management Plan will be developed for managing vegetation during the operation phase of the development.

1.1 Commitment to environmental protection and indigenous engagement

Manitoba Hydro integrates environmentally responsible practices in all aspects of our business. Environmental protection can only be achieved with the involvement of Manitoba Hydro employees, consultants, contractors, Indigenous communities and organizations and the public at all stages of the Project from planning and design through construction and operational phases.

The use of a CMP is a practical and direct implementation of Manitoba Hydro's environmental policy and its commitment to responsible environmental and social stewardship. It is a proactive approach to manage potential effects of access related to the construction of a new transmission line.

Manitoba Hydro is committed to seeking input on this draft plan from Indigenous communities and organizations through the MMTP Monitoring Committee and the project First Nations and Metis Engagement Process.

Below is a summary and evidence of Manitoba Hydro's consultation with potentially affected persons, organizations, Indigenous communities, and federal and provincial authorities regarding the Clearing Management Plan. Any feedback or concerns that were raised, steps that Manitoba Hydro has taken or will take to address those concerns can be found in Appendix A.

Draft environmental protection and management plans, including Clearing Management Plan, were uploaded to the Project website and a web page was created in October 2018, including a fillable comment form to provide feedback (Appendix A).

Indigenous communities and organizations, landowners, interested parties and the public were notified, in October 2018, that Manitoba Hydro was seeking feedback on these plans. This was done through the Project website, MMTP Monitoring Committee website, e-campaign, emails, and letters to landowners (Appendix A).

The construction environmental protection plan and associated management plans, including the Clearing Management Plan have been discussed at two MMTP Monitoring Committee meetings and posted to the MMTP Monitoring Committee website. Paper copies of all draft plans were provided to community members at both meetings. The management plan website was shared with communities via email and the plan was also posted on the MMTP Monitoring Committee website (Appendix A).

Manitoba Hydro is committed to implementing this CMP and requiring Contractors to follow the terms of this and other applicable plans within the Environmental Protection Program.

1.2 Purpose and objectives

This Clearing Management Plan (the Plan) has been developed for the Manitoba-Minnesota Transmission Project (the Project) to provide guidance and instruction to

Contractors to manage the vegetation required to be removed within the Right of Way to construct the Project.

The Plan provides clearing prescriptions, additional guidance and required actions specific to the Project and is augmented by the Clearing Implementation Mapbook that contains the detailed locations where clearing prescriptions are to be implemented.

The objectives of the Plan are to inform staff, contractors, regulators and the public on:

- general information about how the Plan fits into the Project Environmental Protection Program and the relevant regulatory context
- roles and responsibilities in delivering the Plan
- operational requirements of the Golden-winged Warbler Habitat Management Plan during the initial clearing phase of construction
- guidance on the implementation of the Plan and steps to be taken in its implementation, including clearing prescriptions and measures to retain understory vegetation within the ROW.
- inspection and compliance activities to provide assurance the plan requirements are being followed and met.

1.3 Commitments

On private land, the landowners will be consulted to determine if they have a requirement for firewood. If the landowner requests firewood MH will in consultation with the landowner determine the volume of firewood to be set aside as well as a suitable stockpile location on private land adjacent to the ROW. Trees will be processed to the landowner firewood specification described in Processing of Timber Salvage. If a landowner does not have a requirement for firewood the trees will be disposed of by one of the approved woody debris disposal methods identified in the applicable Clearing Prescription Type.

On Crown land, some timber along the ROW will be salvaged for the purposes of setting up stockpile locations where firewood will be available to the general public.

1.4 Roles and responsibilities

This section outlines the major roles and responsibilities of those involved in the implementation of the Plan.

A summary of roles and key responsibilities is found in Table 1. Communication and reporting on environmental issues, monitoring and compliance will be as outlined in Figure 2.

Table 1: Key roles and responsibilities

Roles	Key Responsibilities
Manitoba Hydro	<ul style="list-style-type: none"> - Determine clearing prescriptions through consultation with Manitoba Sustainable Development, landowners, Indigenous communities and organizations, and the public. - Conduct a pre-construction survey to determine species and timber merchantability within the Project ROW. - Determine any private land special clearing considerations through consultations with landowners. - Identify and map clearing prescriptions with identified methods and debris disposal in Clearing Implementation Mapbook. - Determine firewood requirements through consultations with landowners and Indigenous communities and organizations. - Where landowner has requested firewood determine a suitable stockpile location on their private land adjacent to the ROW in consultation with the landowner. - Determine timber stockpile locations in consultation with Manitoba Sustainable Development. - Identify destinations and approximate volumes for salvaged timber delivery. - Submit Scaling Plan for approval of Manitoba Sustainable Development. - Complete salvaged timber final check scale prior to transport. - Submit all salvaged timber final scale records to Manitoba Sustainable Development. - Obtain load slip books from Manitoba Sustainable Development for Contractor use during transport of salvaged timber off of the Project ROW. - Submit all required copies of completed load slips as well as all scaling results to Manitoba Sustainable Development. - Submit to Manitoba Sustainable Development all complete, partially used, or unused load slip books after salvaged timber transport on the Project is complete or at any time at the request of Manitoba Sustainable Development.
Contractor	<ul style="list-style-type: none"> - Shall adhere to Clearing Management Plan and Clearing Implementation Mapbook including employee training, prescribed actions, flagging and submit all required documentation.

Table 1: Key roles and responsibilities

Roles	Key Responsibilities
	<ul style="list-style-type: none"> - Respond and act promptly to resolve if any activities are identified as not in compliance with the CMP or any regulatory requirements. - Notify Manitoba Hydro in writing after salvaged timber has been piled and processed to specification. - Retain a Province of Manitoba Licenced Scaler to scale salvaged timber prior to transport off of the Project ROW. - Submit salvaged timber scaling records to Manitoba Hydro a minimum of 48 hours prior to transport off of the Project ROW to allow for a final check scale by Manitoba Hydro. - Complete and submit to Manitoba Hydro all required copies of load slips for any salvaged timber transported off of the Project ROW. - Submit to Manitoba Hydro all complete, partially used, or unused load slip books after salvaged timber transport on the Project is complete or at any time at the request of Manitoba Hydro.

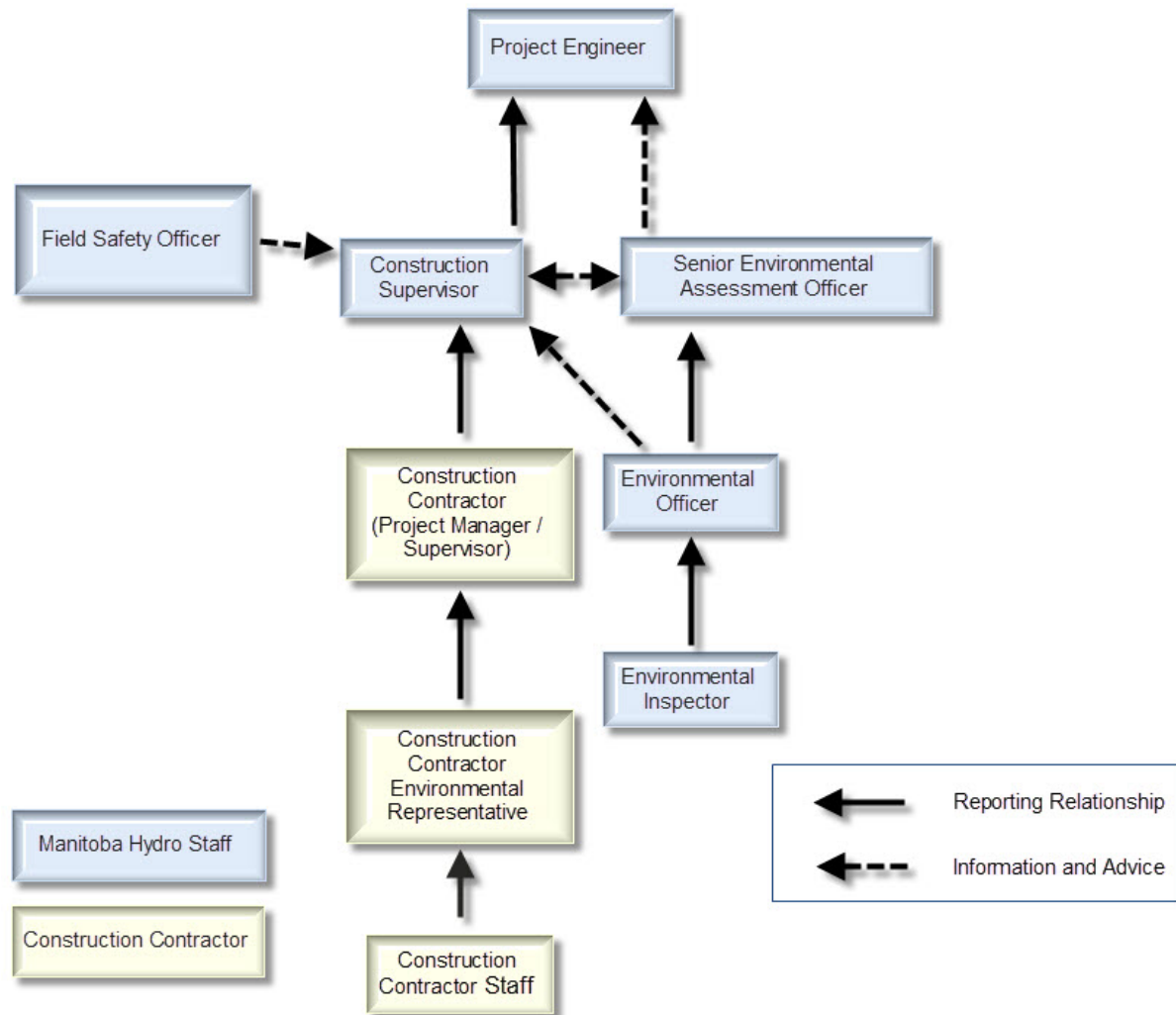


Figure 2: Environmental communication reporting structure

2.0 Regulatory context

Manitoba has two primary pieces of legislation specific to clearing of the Project footprint, they are *The Forest Health Protection Act* and *The Forest Act* along with their associated regulations.

Below is an excerpt of *The Forest Health Protection Act* describing how it applies to the Project:

The purpose of this Act is to protect the health of all trees and forests in Manitoba by

- (a) preventing forest diseases and insects that are not native to Manitoba from entering or becoming established in the province;*
- (b) detecting, containing, suppressing and eradicating forest diseases and insects in Manitoba; and*
- (c) developing programs to protect and promote the overall health of trees and forests and their ecosystems in Manitoba.*

Below is an excerpt of *The Forest Act* describing how it applies to the Project:

The minister, with respect to Crown timber on behalf of the Crown, shall regulate and administer all matters relating to, or in any way connected with, forestry, and, without restricting the generality of the foregoing, shall regulate and administer,

- (a) all rights, properties, interests, claims and demands of the Crown in timber;*
- (b) subject to The Financial Administration Act, all revenues and money of the Crown arising from forestry;*
- (c) management, utilization and conservation of Crown forest lands and timber;*
- (d) afforestation, reforestation, tree preservation and tree improvement;*
- (e) the disposition of timber;*
- (f) the cutting and production of primary forest products and products of the forest;*
- (g) the enforcement of statutes, rules and regulations relating to forestry and provincial forests.*

Below are key excerpts from the *The Forest Act- Forest Use and Management Regulation* 227/88 R that are applicable to the Project:

Scaling

44(1) Unless permitted under an approved scaling plan or by a written authorization from an officer, no Crown timber cut under the authority of a commercial timber cutting right may be removed from the area where it was cut unless it has been scaled by a scaler.

44(2) An operator must conduct his or her operations in a manner that allows for the complete and accurate scaling of the timber cut to be performed safely and with a minimum of time and effort.

Scaling plans

44.1(1) The holder of a commercial timber cutting right must prepare an annual scaling plan and have the plan approved by the director before harvesting timber or moving previously harvested timber from the site where it was cut

44.1(2) Scaling plans must be in a form approved by the director and must specify

(a) the location where scaling is to occur;

(b) the final destination of all harvested timber;

(c) the scaling method; and

(d) any other information requested by the director.

44.1(3) The holder of a commercial timber cutting right must not move timber to a location that is not set out in an approved scaling plan.

Load slips

48(1) Subject to this section, the holder of a timber cutting right must ensure that (a) a load slip is completed for each load of Crown timber cut under authority of that timber cutting right that is transported in the province; and (b) the completed load slip is provided to the person transporting the timber.

48(3) A person transporting timber in the province must ensure that a completed copy of the load slip, bill of lading or numbered invoice respecting the transported timber is in his or her possession at all times while the timber is in transport.

48(6) The holder of a timber cutting right must ensure that a load slip book issued by the department is used only in relation to timber cut under authority of the timber cutting right specified in the load slip book.

48(7) The holder of a timber cutting right or a timber dealer who is issued a load slip book must return the book to the department (a) when all load slips in the book have been used; or (b) when requested by an officer.

Additional measures prescribed in the Project's Environment Act Licence and Crown Land Permits are addressed within this Plan.

3.0 Implementation

The implementation of the Plan utilizes a step-wise process; however, these steps will be undertaken at various times throughout the pre-construction and construction phases of the Project. The plan is founded on a principle of adaptive management – if aspects of the plan are found to require modifications for improved effectiveness or if new information becomes available (e.g., more effective control actions, pest outbreaks in the Project area) the Plan and actions will be updated.

3.1 Woody debris disposal methods

Woody debris is vegetation matter such as shrubs, trees not identified for salvage, branches, and other coarse woody material generated from clearing activities that must be disposed of through one of the following approved methods:

- Chipping – this method involves the use of chipper to chip woody debris so that chips can be spread on the ROW or hauled offsite to a location designated or approved by a Manitoba Hydro Environmental Officer. Chipping debris on the ROW must be evenly distributed and cannot exceed a depth of 20cm.
- Mulching – this method involves the use of rotary drum mulchers to mulch debris on the ROW. Mulch debris on the ROW must be evenly distributed and cannot exceed a depth of 20cm.

Woody debris on the ROW will only be considered to be satisfactorily mulched and/or chipped if there are no woody pieces greater than 30cm in length or wider than 10cm in diameter. If inspections determine that woody debris in an area has not been satisfactorily mulched and/or chipped below these size thresholds it is the contractor's responsibility to return to the area to complete mulching and/or chipping woody debris.

3.2 Danger trees

Danger trees are trees outside of the cleared ROW width that violate clearance distances from the conductor and therefore need to be removed. Danger trees are identified based on their height and proximity to the transmission line. When a danger tree is encountered it will be flagged by Manitoba Hydro for removal by the Contractor. Typically danger trees will be cut by feller buncher or chainsaw and brought into the cleared ROW for disposal.

3.3 Forest health considerations

There are two primary forest health considerations in the Project area; Dutch Elm Disease and pine bark beetle. Any elm harvested within the Project footprint must be chipped and spread on ROW or disposed of at a MH approved disposal facility. Elm wood cannot be left on the ROW or allocated as firewood under any circumstances. In areas identified on the Clearing Implementation Mapbook no pine species timber is to be left on the ROW as it can act as an attractant for pine bark beetle, which may attack adjacent trees outside of the ROW.

The City of Winnipeg is designated a Emerald Ash Borer (EAB) regulated area by the Canadian Food Inspection Agency which means that the movement of ash materials, including logs, branches and woodchips, and all species of firewood from the affected sites is restricted. All trees being cleared for the Project within the City of Winnipeg boundary must be chipped and spread on the ROW.

3.4 Vegetation retention

A key consideration in the development of the clearing prescriptions is the goal of clearing trees to ensure the safe construction and operation of a transmission line. In areas where vegetation retention has been prescribed the maximum allowable height for vegetation to remain on the right of way is 4 metres (except for perch sites within the areas designated as Golden-winged Warbler habitat). Manitoba Hydro through the use of clearing prescriptions for specific locations along the ROW is retaining low lying vegetation in the following prescribed areas:

- 30-85m riparian buffer zone on all creeks, streams, rivers and wetlands (the width of the riparian buffer is based on slope of land entering waterway as described in the Riparian Buffer Table in the CEnvPP).
- Visual line of site buffers along select roads and trails.
- Environmentally Sensitive Sites designated as Golden-winged Warbler (GWW) habitat.
- Other Environmentally Sensitive Sites with mitigation measure specifying vegetation retention (plant harvest areas, sensitive wildlife areas, etc.).
- Limited clearing areas.

In areas where guyed towers or angle towers are utilized the ROW is 100m wide but will only be cleared to full 100m width on guyed tower and angle tower footprints. Between tower locations the ROW cleared width is reduced to 80m wide with the outer 10m on

either side of the ROW to remain intact with the exception of any danger trees requiring removal.

3.5 Riparian buffers

Riparian buffers near watercourses and wetlands are especially sensitive to the effects of clearing activities. The CEnvPP outlines the locations and specific mitigation measures to be applied when working within riparian buffers.

3.6 Line of sight buffers

Line of sight buffers near highways, roads, and trails provide a break in line of sight off of these commonly travelled areas and are an important wildlife protection measure. The CEnvPP outlines the locations and specific mitigation measures to be applied when working within line of site buffers.

3.7 Other environmentally sensitive sites with mitigation measure for vegetation retention

Other Environmentally Sensitive Sites (ESS) such as plant harvest areas, heritage sites, and sensitive wildlife areas can also be especially sensitive to the effects of clearing activities. The CEnvPP outlines the locations and specific mitigation measures to be applied when working within specific ESS areas.

3.8 Timber salvage

Merchantable timber is considered tree species (i.e. trembling aspen, balsam poplar, jack pine, red pine, white spruce, black spruce, etc.) that is a minimum diameter as described in the Forest Use and Management Regulation 277/88R and the Manitoba Sustainable Development Manual of Scaling Instructions (Fourth Edition). Timber salvage includes the felling and processing of timber to meet product specifications as described in section 3.8.3. The Clearing Implementation Mapbook identifies areas designated with a clearing prescription types that includes timber salvage ie. ST (Salvageable Timber) and ST-ESS (Salvageable Timber within an ESS).

3.8.1 Scaling plan

In coordination with the Plan, Manitoba Hydro will submit to Manitoba Sustainable Development a Scaling Plan for approval. Timber salvage activities on the Project will adhere to the approved version of the Scaling Plan.

3.8.2 Firewood

Some timber along the ROW will be salvaged for the purposes of firewood. The Contractor is required to fulfill any private land firewood commitments described in the Landowner Information Map. In areas of the ROW that have been designated with a clearing prescription type that includes timber salvage some of that timber may be allocated for firewood use, the Contractor will transport timber to stockpile locations designated by Manitoba Hydro for the public to gather firewood.

3.8.3 Processing of timber salvage

All timber salvage should be kept clean and free of other foreign materials. For the purposes of the Project all timber salvage areas will be assigned one of three different timber salvage processing specifications:

1) Landowner firewood specification

Trees designated as landowner firewood will be sorted and piled by species, de-limbed using appropriate equipment, and topped at a 10cm diameter. Processed landowner firewood will then be skidded to a suitable stockpile location on the landowner's property adjacent to the ROW.

2) Roundwood specification

Trees designated for transport as roundwood will be sorted and piled by species, de-limbed using appropriate equipment, and cut to length (typically 2.5m length for hardwoods and 5m length for softwoods).

3) Biomass chips specification

Trees designated for transport as biomass wood chips (hogfuel) will be sorted and piled by species and then chipped directly into chip trailer for transport. The maximum allowable dimension for biomass wood chips is 6cm length x 6cm width x 1cm thickness.

Please note that depending on available markets at the time of clearing operations there may be specific salvaged timber specifications that are determined by the mill destination standards.

3.9 General mitigation measures

The Construction Environmental Protection Plan contains general mitigation measures that are applicable to preventing environmental effects during clearing activities. Key tables to reference in regards to the CMP include:

- Access roads and trails (PC-1),
- Clearing (PA-3)
- Grubbing (PA-8)
- Heritage Resources (EC-5)
- Management Measures (MM)
- Rights-of-way (PC-8)
- Water Crossings (PC-9)
- Wetlands (EC-8)
- Wildlife Protection (EC-9)

3.10 Flagging/signage

The Contractor is responsible for adequately flagging and/or installing signage for clearing prescription areas and timber stockpiles locations prior to commencement of clearing activities in that area. All flagging used for the purpose of the CMP will be spotted (polka dot).

3.11 Clearing Prescriptions

Clearing prescriptions are instructions to the Contractor on how vegetation and woody debris is to be managed during the initial clearing of the ROW. Clearing prescriptions have been developed based on:

- Size, species and density of vegetation from pre-construction survey
- ESS areas designated as GWW habitat
- Environmentally Sensitive Sites
- Previous experiences in transmission line clearing methods

- Public, First Nation and Metis Engagement Processes
- Regulatory requirements

Table 2 below summarizes the different clearing prescription types. Based on site specific conditions MH reserves the option to change the clearing prescription type identified in the Clearing Implementation Mapbook. It is also important to note that instances may arise after this plan is finalized where other requirements such as regulatory conditions or landowner commitments prompt specific prescriptions or instructions that override the general prescriptions.

Table 2: Clearing prescription types

Type	Description	General prescription	Approved clearing equipment	Approved woody debris disposal method
WAC	<p>Work Area Clearing</p> <ul style="list-style-type: none"> Area encompasses the stringing corridor and the tower footprints. The stringing corridor is typically 24m wide except within the Riparian Buffers or Line of Sight Buffers where it is 7-10m wide. Self-support tower footprints are 80m wide x 80m long. Guyed tower and angle tower footprints are 100m wide x 80m long. These areas will be fully cleared to accommodate transmission line construction activities. 	<ul style="list-style-type: none"> Develop an access trail that is <15m wide. Remove all trees and shrubs. Retain herbaceous vegetation where feasible. Minimize grubbing of vegetation for construction purposes to the extent possible. 	<ul style="list-style-type: none"> Feller Buncher Single Grip Harvester Excavator with rotary drum mulcher head Rotary drum mulcher Chainsaw/brushsaw Skidder Grapple loader Whole tree wood chipper Roundwood and/or chip transport truck Wide-tracked dozer with blade or rake (for <15m wide ROW access trail development and grubbing activities where necessary) 	<ul style="list-style-type: none"> Chipping Mulching
RB	<p>Riparian Buffer</p> <ul style="list-style-type: none"> Encompasses areas near watercourses/waterbodies and wetlands. Typical riparian buffer width is 30m but can be as wide as 85m (based on slope of land entering waterway as described in the Riparian Buffer Table in the CEnvPP). 	<ul style="list-style-type: none"> Remove all trees and shrubs >4m tall. Retain trees, shrubs and herbaceous vegetation <4m tall to the extent possible. Develop an access trail that is 7m wide if vehicle/equipment access is required through an RB. Trees and woody debris should be brought outside of the riparian buffer for salvage and/or disposal. 	<ul style="list-style-type: none"> Feller Buncher Excavator with rotary drum mulcher head Skidder Delimber Slasher Forwarder Chainsaw/brushsaw Grapple loader Whole tree wood chipper Roundwood and/or chip transport truck 	<ul style="list-style-type: none"> Chipping Mulching

Table 2: Clearing prescription types

Type	Description	General prescription	Approved clearing equipment	Approved woody debris disposal method
LOSB	<p>Line-of-Sight Buffer</p> <ul style="list-style-type: none"> Encompasses areas near highways, roads, and trails. Buffer width is 50m. 	<ul style="list-style-type: none"> Remove all trees. Remove all shrubs >4m tall. Retain shrubs and herbaceous vegetation <4m tall to the extent possible. Develop an access trail that is 7m wide along a path to be determined onsite through consultation between MH and the Contractor. Trees and woody debris should be brought outside of the line of sight buffer for salvage and/or disposal. 	<ul style="list-style-type: none"> Feller Buncher Excavator with rotary drum mulcher head Skidder Delimber Slasher Forwarder Chainsaw/brushsaw Grapple Loader Whole tree wood chipper Roundwood and/or chip transport truck 	<ul style="list-style-type: none"> Chipping Mulching
LC	<p>Limited Clearing</p> <ul style="list-style-type: none"> Areas that have been previously cleared or are naturally free of forest vegetation. Little or no clearing required. <p>Examples:</p> <ul style="list-style-type: none"> Cultivated land; Natural grassland or marsh land; Recently cleared areas; Developed land; Areas with consistently low lying shrubby vegetation <4m tall. 	<ul style="list-style-type: none"> Limited clearing generally requires no clearing except potentially some mulching/grubbing within the stringing corridor and on tower footprints as necessary. Develop an access trail that is <15m wide. 	<ul style="list-style-type: none"> Excavator with rotary drum mulcher head Rotary Drum Mulcher Chainsaw/brushsaw Wide-tracked dozer with blade or rake (for <15m width ROW access trail development and grubbing activities where necessary) 	<ul style="list-style-type: none"> Mulching

Table 2: Clearing prescription types

Type	Description	General prescription	Approved clearing equipment	Approved woody debris disposal method
NST - ESS	<p>Non-Salvageable Timber within Environmentally Sensitive Sites (ESS)</p> <ul style="list-style-type: none"> Areas where timber is NOT salvageable and average vegetation height is >4m within ESS areas. 	<ul style="list-style-type: none"> Remove all trees (except for perch site trees within areas designated as GWW habitat). Remove all shrubs >4m tall. Retain shrubs and herbaceous vegetation <4m tall to the extent possible. Trees and woody debris will be chipped and spread on the ROW or mulched. Perch site trees must be retained where feasible if within an ESS area designated as GWW habitat. Perch site trees are small groups of 3-5 trees within 10m of the cleared edge of the ROW. Typically 5-10 perch sites will be randomly distributed per span. 	<ul style="list-style-type: none"> Feller Buncher Excavator with rotary drum mulcher head Chainsaw/brushsaw Skidder. Grapple loader Whole tree wood chipper 	<ul style="list-style-type: none"> Chipping Mulching
NST	<p>Non-Salvageable Timber</p> <ul style="list-style-type: none"> Areas where timber is NOT salvageable outside of ESS areas. 	<ul style="list-style-type: none"> Remove all trees. Remove all shrubs >4m tall. Where practical retain larger continuous patches (>0.1 hectares) of suitable shrubs and herbaceous vegetation <4m. 	<ul style="list-style-type: none"> Feller Buncher Excavator with rotary drum mulcher head Rotary drum mulcher Chainsaw/brushsaw Skidder. Grapple Loader Whole tree wood chipper 	<ul style="list-style-type: none"> Chipping Mulching

Table 2: Clearing prescription types

Type	Description	General prescription	Approved clearing equipment	Approved woody debris disposal method
ST-ESS	<p>Salvageable Timber within Environmentally Sensitive Sites (ESS)</p> <ul style="list-style-type: none"> Area where timber is partially salvageable (i.e. merchantable stems exist throughout but represent only a portion of the overstorey) within ESS areas. 	<ul style="list-style-type: none"> Remove all trees (except for perch site trees within areas designated as GWW Habitat). Remove all shrubs >4m tall. Retain shrubs and herbaceous vegetation <4m tall to the extent possible. Non-Merchantable trees and woody debris will be chipped and spread on the ROW or mulched. Merchantable trees will be sorted and piled by species at suitable summer accessible stockpile location and then processed (de-limbed & cut to length) to the assigned timber salvage processing specification. Perch site trees must be retained where feasible if within an ESS area designated as GWW habitat. Perch site trees are small groups of 3-5 trees within 10m of the cleared edge of the ROW. Typically 5-10 perch sites will be randomly distributed per span. 	<ul style="list-style-type: none"> Feller Buncher Single grip harvester Excavator with rotary drum mulcher head Skidder Delimber Slasher Forwarder Chainsaw/brushsaw Grapple loader Mobile wood Chipper 	<ul style="list-style-type: none"> Chipping Mulching

Table 2: Clearing prescription types

Type	Description	General prescription	Approved clearing equipment	Approved woody debris disposal method
ST	<p>Salvageable Timber</p> <ul style="list-style-type: none"> Area where timber is partially salvageable (i.e. merchantable stems exist throughout but represent only a portion of the overstorey) outside of ESS areas 	<ul style="list-style-type: none"> Remove all trees. Remove all shrubs >4m. Where practical retain larger continuous patches (>0.1 hectares) of suitable shrubs and herbaceous vegetation <4m. Non-Merchantable trees and woody debris will be chipped and spread on the ROW or mulched. Merchantable trees will be sorted and piled by species at suitable stockpile location and then processed (de-limbed & cut to length) to mill specification or for firewood. 	<ul style="list-style-type: none"> Feller Buncher Excavator with rotary drum mulcher head Delimber Skidder Slasher Single grip harvester Forwarder Rotary drum mulcher Chainsaw/brushsaw Grapple loader Mobile wood chipper 	<ul style="list-style-type: none"> Chipping Mulching

The locations associated with the above clearing prescriptions are illustrated in the Clearing Implementation Mapbook. The estimated amount of area in hectares by clearing prescription type within each Construction Section is described in Table 3 below.

Table 3: Estimated clearing prescription types by construction section

Clearing prescription	Area in hectares		
	Section 1	Section 2	Grand total
WAC	11	221	232
RB	2	15	17
LOSB	0	6	6
ST	0	51	51
ST-ESS	0	77	77
NST-ESS	2	50	52
NST	7	88	95
Total area of ROW to be cleared	22	508	530
LC	652	472	1124
Total area of ROW	674	980	1654

3.12 Training and documentation

Training and documentation form critical components of the implementation of this plan. Manitoba Hydro and the contractor(s) each have responsibility to ensure that their respective personnel are appropriately trained to carry out their role in clearing management within the ROW, and that proper documentation and communication is being conducted throughout the Project.

3.12.1 Education and training

Education and training form a critical component of the Plan. Manitoba Hydro will hold a Contractor Environmental Pre-Construction Orientation meeting to review Project specifics and key environmental requirements with all of its Contractors at a supervisory level. A summary of this Clearing Management Plan, implementation requirements, roles and responsibilities, and Manitoba Hydro's expectations will be presented at that time.

Manitoba Hydro will also hold a separate pre-construction environmental meeting to provide the opportunity for Manitoba Hydro and Contractor environmental representatives to discuss Project specifics and environmental requirements in more depth.

It is a mandatory requirement that the contractor(s) provide all personnel involved in construction work in the field or involved in supervision of those personnel (i.e., project manager, supervisors) Project-specific Clearing Management Plan orientation training prior to starting work. This training will present the objectives of the plan, roles and responsibilities, clearing issues and required actions, and documentation requirements. A training attendance record must be maintained by the contractor(s) and submitted to Manitoba Hydro Environmental Protection Information Management System.

3.12.2 Record keeping and reporting

When timber that has been designated as salvage is scaled by a Province of Manitoba Licensed Scaler retained by the Contractor all copies of scaling records will be submitted to Manitoba Hydro within one week from the date that timber was scaled. The Contractor must also provide MH with a minimum of 48 hours' notice prior to transport of scaled timber off of the Project ROW to allow for a final check scale by Manitoba Hydro.

The Contractor is required to document the transport of salvaged timber or chips through the use of Province of Manitoba issued load slips. A fully completed load slip must accompany any load of wood being transported off of the project ROW and a copy of the load slip must be submitted to Manitoba Hydro no later than one week from the date that the timber was hauled.

4.0 Communication

The Plan as well as the Clearing Implementation Mapbook and accompanying Landowner Information Map form critical components of communicating clearing requirements to personnel working on the Project. Manitoba Hydro will provide the contractor(s) a Clearing Implementation Mapbook visually identifying clearing information.

Identification of land parcels where landowners have requested firewood will be finalized by Manitoba Hydro prior to clearing.

Any contractor-proposed additions, location modifications or Plan requirement revisions are required to be submitted in writing to Manitoba Hydro and include a map containing legal land description and GPS location. Any Manitoba Hydro-required revisions to the Plan will be communicated to the contractor's Project Manager for distribution to Project staff.

5.0 Inspection

Manitoba Hydro will inspect the Contractor's work carried out under the Plan to assess compliance with the clearing prescriptions and other commitments made in the Plan.

If Manitoba Hydro inspections determine that documentation, adherence to clearing prescriptions, landowner commitments, prescribed actions, documentation or any other activity is not to the satisfaction of Manitoba Hydro or does not meet the minimum expectations of this Plan; measures to remedy the deficiencies will be communicated directly to onsite Contractor staff. If deficiencies are not remedied in a timely manner according to Manitoba Hydro, measures will be implemented through a Corrective Action Report, Environmental Improvement or Stop Work Orders to ensure compliance and overall Project success.

This page was left intentionally blank.

Appendix A

Summary of Consultation

Appendix A: Summary of consultation

Introduction

Below is a summary and evidence of Manitoba Hydro's consultation with potentially affected persons, organizations, Indigenous communities, and federal and provincial authorities regarding the Clearing Management Plan (the Plan), including any concerns that were raised, steps that Manitoba Hydro has taken or will take to address those concerns.

Consultation

Draft environmental protection and management plans, including this Plan were uploaded to the Project website and a web page was created in October 2018, including a fillable comment form to provide feedback.

As Manitoba Hydro completed draft plans, Indigenous communities and organizations, landowners, interested parties and the public were notified. Input was sought between May of 2018 until present. Manitoba Hydro sought feedback on most plans in October of 2018. This was done through the Project website, MMTP Monitoring Committee website, e-campaign, emails, and letters to landowners.

The construction environmental protection plan and associated management plans, including this Plan, have been discussed at two MMTP Monitoring Committee meetings on May 17, 2018 and October 10, 2018. As noted above, the Project website was shared with communities via email and the Plan was also posted on the MMTP Monitoring Committee website.

Concerns raised and steps taken to address concerns

Manitoba Hydro received feedback on this Plan from a MMTP Monitoring Committee Representative Dakota Tipi First Nation (Table 1), Peguis First Nation (Table 2), and a MMTP Monitoring Committee Representative from Peguis First Nation (Table 3).

Manitoba Hydro reviewed the feedback, updated the plan where appropriate including the list of revisions table and provided commenters with a table including their comments and Manitoba Hydro's responses. As a result of this no further feedback has been received from these communities/organizations with regard to this Plan.

Table 1 Comments from a MMTP Monitoring Committee Representative from Dakota Tipi First Nation

Section	Comments from Dakota Tipi First Nation	Manitoba Hydro response, steps taken and rationale
Overall	I reviewed the cultural and heritage resources protection plan, I'm very satisfied with hydro respect and transparent aspect to the plan, as well with the other 10 plans, Dakota Tipi first nation and myself look forward to a respectful positive outcome for all living spirits that will be involved in the construction of the MMTP project	Manitoba Hydro also looks forward to continuing to work with Dakota Tipi First Nation and thanks the Committee Representative for their review of the plans

Table 2 Comments sent via Peguis First Nation

Section	Comments sent via Peguis First Nation	Manitoba Hydro response, steps taken and rationale
Roles and responsibilities: table 1	<p>"Determine clearing prescriptions through consultation ..."</p> <p>Has any work been done with this so far?</p>	Yes, please refer to Appendix 1.
	<p>What are the plans for grubbing of these areas? Archaeological sites often sit either at the surface or just below the surface of the soil. Will there be any archaeological survey work prior to clearing work or have these areas already been cleared</p>	Manitoba Hydro and project Archaeologist are in the process of completing an HRIA in coordination with HRB to clear archaeologically, any identified cultural and heritage sensitive sites prior construction at that site.

Section	Comments sent via Peguis First Nation	Manitoba Hydro response, steps taken and rationale
	archaeologically?	
	Are Culturally modified trees a concern?	Yes, refer to the CHRPP.
Section 3.9 general mitigation measures	<p>Grubbing includes disturbing surface soils. Have these areas been cleared by the project archaeologist, or are the contractor workers operating backhoes and other mechanized tools able to spot artifacts from their backhoe? "A wide-tracked dozer for <15m wide ROW access trail and grubbing where necessary ..."</p> <p>As above, grubbing will disturb soils, and therefore damage, displace or destroy archaeological materials.</p> <p>Overall, there is no connection established between culture and heritage and current First Nations people or communities. There is very little information about providing adequate and timely reporting to these nations or individuals. This draft plan does not benefit First Nations and their knowledge of new archaeological sites and materials encountered or recovered during the course of the construction of the MMTP.</p>	Manitoba Hydro and project Archaeologist are in the process of completing an HRIA in coordination with HRB to clear archaeologically, any identified cultural and heritage sensitive sites prior construction at that site.

Section	Comments sent via Peguis First Nation	Manitoba Hydro response, steps taken and rationale
Section 3.11 clearing prescription types: table 2	<p>Under Type, LC in general prescription:</p> <p>“Limited clearing generally requires no clearing except potentially some mulching/grubbing within the stringing corridor and on tower footprints if necessary.”</p> <p>If this is to be conducted depending on field conditions, are there any plans in place to contact an archaeologist to check these areas?</p>	Manitoba Hydro and project Archaeologist are in the process of completing an HRIA in coordination with HRB to clear archaeologically, any identified cultural and heritage sensitive sites prior construction at that site.
	How extensive are the areas to be grubbed?	The work area prescription is the only planned location for grubbing to occur
	Is this decision to be made on the ground or have those areas been mapped prior to commencement of the project construction?	Yes, these are mapped
	How deep will a grubbing operation go?	Grubbing is intended to remove the depth of the stump
	Will the project archaeologist be notified of areas to be grubbed in a timely fashion?	Yes, this has already been assessed by the Project archaeologist
	Will these areas be tested by the project	Yes, where there are identified cultural and

Section	Comments sent via Peguis First Nation	Manitoba Hydro response, steps taken and rationale
	archaeologist prior to the commencement of construction activities? If not, why not?	heritage sensitive sites.
Section 3.12.1 Education and Training	<p>“Manitoba Hydro will hold a Contractor Environmental Pre-Construction Orientation meeting to review Project specifics and key environmental requirements with all of its Contractors at a supervisory level.”</p> <p>“Manitoba Hydro will also hold a separate pre-construction environmental meeting to provide the opportunity for Manitoba Hydro and Contractor environmental representatives to discuss Project specifics and environmental requirements in more depth.”</p> <p>Do either of these meetings include information about archaeological sites, objects, or areas? If so, what kind of training is going to be given? Will an archaeologist provide this training?</p>	There will be a specific meeting to discuss cultural and heritage resource protection per the CHRPP















Table 3 Comments from a MMTP Monitoring Committee Representative from Peguis First Nation

Section	MMTP Monitoring Committee representative comments from Peguis First Nation	Manitoba Hydro response, steps taken and rationale
<p>Page 2 Transmission Environmental Protection Plan:</p>	<p>Statement “In this document clearing management for this project is considered only during the construction phase of the development;</p> <p>Question: Why is clearing not considered as the line with be permanent and will require clearing due to future growth.</p> <p>Concern: I have yet to see the steps of spills since mechanical equipment does spill from time to time. What are the steps that MH have in place for spills?</p>	<p>An MMTP Integrated Vegetation Management Plan has been developed to describe and outline how vegetation management will conducted after the construction phase of the Project (https://www.hydro.mb.ca/projects/mb_mn_transmission/pdfs/draft/epp_integrated_vegetation_management_plan20181112.pdf).</p> <p>Procedures in the event of spills are outlined in the Transmission Line Emergency Response Plan https://www.hydro.mb.ca/projects/mb_mn_transmission/pdfs/draft/epp_transmission_line_construction_emergency_response_plan.pdf</p>

Draft environmental protection and management plans, were uploaded to the Project website and a web page was created in October 2018. Eleven plans were made available for review in October of 2018. A recent screen shot of the Manitoba Hydro Project Website is below (Figure A), and includes a request for input on all 17 plans.

Environmental protection and management – draft plans

The draft plans are used as guides for contractors and field personnel during the construction of MMTP. They ensure environmental legislation requirements are met and the environment is protected.

-  [Clearing Management Plan \(Draft\)](#) (PDF, 882 KB)
-  [NEW Blasting Management Plan \(Draft\)](#) (PDF, 382 KB)
-  [Erosion and Sediment Control Plan \(Draft\)](#) (PDF, 8.8 MB)
-  [Golden Winged-Warbler Habitat Management Plan \(Draft\)](#) (PDF, 741 KB)
-  [Cultural and Heritage Resources Protection Plan \(Draft\)](#) (PDF, 5.8 MB)
-  [Navigation and Navigation Safety Plan \(Draft\)](#) (PDF, 5.5 MB)
-  [Waste and Recycling Management Plan \(Draft\)](#) (PDF, 3.2 MB)
-  [NEW Construction Emergency Response Plan \(Draft\)](#) (PDF, 1.2 MB)
 - [NEW Dorsey Converter Station Emergency Response Plan \(Draft\)](#) (PDF, 1.7 MB)
 - [NEW Glenboro Station Emergency Response Plan \(Draft\)](#) (PDF, 1.3 MB)
 - [NEW Riel Converter Station Emergency Response Plan \(Draft\)](#) (PDF, 3 MB)
-  [Rehabilitation and Invasive Species Management Plan \(Draft\)](#) (PDF, 7.3 MB)
-  [Biosecurity Management Plan \(Draft\)](#) (PDF, 2.2 MB)
-  [Construction Access Management Plan \(Draft\)](#) (PDF, 86.4 MB)
-  [Construction Environmental Protection Plan \(Draft\)](#) (PDF, 55.8 MB)
-  [Environmental Monitoring Plan \(Draft\)](#) (PDF, 2 MB)
-  [Integrated Vegetation Management Plan \(Draft\)](#) (PDF, 815 KB)

If you would like to provide us with your feedback on these draft plans, [complete and submit this form](#).

If you cannot view these documents or you need accessible formats, [contact us](#).

We will be adding new and updated plans as we incorporate feedback. Sign up to get notified of these changes:

Email

Figure A screen shot of Manitoba Hydro project page website

A fillable comment form to provide feedback was created in October 2018. A screen shot of the fillable comment sheet can be found below (Figure B).

Environmental protection and management – draft plans feedback

First name

Last name

Address

Phone

Email

Do you represent an Indigenous community or organization?

☐

Yes

☐

No

Draft plan(s) you reviewed (select all that apply):

☐

Access Management|

- ☐ Biosecurity Management
- ☐ Clearing Management
- ☐ Construction Environmental Protection
- ☐ Cultural and Heritage Resources Protection
- ☐ Environmental Monitoring
- ☐ Erosion and Sediment Control
- ☐ Golden Winged-Warbler Habitat Management

For each plan you selected above, share your comments, concerns, and suggestions for how your concerns might be addressed.

Submit

Figure B Fillable comment form to provide feedback

Draft environmental protection and management plans were uploaded to the MMTP Monitoring Committee website in October 2018. A screen shot of the MMTP Monitoring Committee website is below (Figure C).



Figure C MMTP Monitoring Committee website screenshot

Below is a screen shot of the e-campaign that was sent to 825 recipients (Figure D.

The screenshot shows an email header with the Manitoba Hydro logo and the title "Manitoba-Minnesota Transmission Project update". The main body of the email is titled "Environmental protection and management – draft plans" and contains three paragraphs of text. The first paragraph states that feedback is being sought on draft plans for the MMTP, with a link to review them. The second paragraph invites recipients to share feedback by completing a form before November 30, 2018. The third paragraph mentions that new plans will be added to the website as feedback is incorporated, with a link to sign up for notifications. Below this is a "Contact us" section with a bulleted list of contact options: email, phone, and the project website. At the bottom, there is a footer section with contact information, social media icons for Twitter, Facebook, LinkedIn, and YouTube, and a copyright notice.

Manitoba Hydro **Manitoba-Minnesota Transmission Project update**

Environmental protection and management – draft plans

We are looking for feedback on draft environmental protection and management plans for the Manitoba-Minnesota Transmission Project (MMTP). The [plans are available for your review](#).

We invite you to share your feedback on these draft plans. To do so, [complete and submit this form](#) before November 30, 2018.

We will be adding new and updated plans to the website as we incorporate feedback. [Sign up](#) to get notified of these changes.

Contact us

- Email the [Manitoba-Minnesota Transmission Project](#).
- Phone 204-360-7888 or toll-free 1-877-343-1631.
- Visit our [project website](#).

To ensure our email always reaches your inbox, add info@mbhydromail.ca to your address book. This email was intended for mallain@quadrantgeomatics.com.
[Unsubscribe](#) from this email.

Contact us at customerservice@hydro.mb.ca or call toll-free at 1-888-624-9376.

Manitoba Hydro, 360 Portage Ave., Winnipeg, MB R3C 0G8
204-480-5900 | www.hydro.mb.ca

© Manitoba Hydro. All rights reserved. Rev 170207.
Available in accessible formats upon request.





   

Figure D e-campaign screenshot

Below is the content from the letter sent to landowners (Figure E).



2018 10 24

«Landowner»
«Owner_address»
«City», MB «POSTAL_CODE»

Manitoba-Minnesota Transmission Project: Draft environmental protection and management plans

«Landowner»,

As part of planning for the Manitoba-Minnesota Transmission Project (MMTP), Manitoba Hydro is seeking feedback on draft environmental protection and management plans. The following is a link to the document library that contains these plans: https://www.hydro.mb.ca/projects/mb_mn_transmission/document_library.shtml.

The information you have shared regarding your land through discussions with me, Manitoba Hydro property agents, or with our Environment Officer Evan Johansson, have and will inform the details of these plans.

We would like to hear your feedback regarding these plans in a manner that works best for you. The website has a link to a comment form for the plans. Please feel free to call me at «Liaison_phone_number» to share your feedback directly or to set up a site meeting with Evan Johansson please call 204-360-3731, if you have not had the opportunity to do so. We are accepting feedback until November 30, 2018.

We will be adding new and updated plans to the website as we incorporate feedback. I encourage you to visit the Project website (www.hydro.mb.ca/mmtp) for more information or to sign up for project updates.

Please note that Manitoba Hydro will not be moving forward with construction until it has received regulatory approvals.

Yours truly,

«Liaison»

360 Portage Avenue (3) • Winnipeg Manitoba Canada • R3C 0G8
Telephone / N° de téléphone : 1-877-343-1631
MMTP@hydro.mb.ca

Figure E Content from the letter sent to landowners

Below is a screen shot of an email sent to the MMTP Monitoring Committee (Figure F).

From: Coughlin, Sarah
Sent: Friday, October 19, 2018 5:31 PM
To:

[REDACTED]
[REDACTED]
Cc: [REDACTED]
[REDACTED]
Subject: RE: MMTP Monitoring Committee Meeting October 10, 2018

Please find attached draft minutes for the October 10, 2018 MMTP Monitoring Meeting. Please submit any changes/comments by October 31, 2018 and mark your calendars for **November 14, 2018** - the next MMTP Monitoring Meeting at Dakota Tipi First Nation offices near Portage la Prairie, Manitoba. [REDACTED]

[REDACTED]
[REDACTED]
[REDACTED]
[REDACTED]

At the October 10, 2018 meeting the group was asked to provide comment on a series of draft environmental management and protection plans. Manitoba Hydro is seeking comments on these draft plans from MMTP Monitoring Committee members. Attached you'll find a short description of each to help determine if the plan is of interest to you. Each of these draft plans guides contractors and field personnel while constructing the Manitoba-Minnesota Transmission Project in a manner that meets environmental legislation requirements and protects the environment. We'd like to hear comments or concerns in a manner that works best for you. Please feel free to call me at (204)360-3016 to share your comments directly or to set up a meeting with us. You can also visit our project website at [where a comment form has been provided for the plans](https://www.hydro.mb.ca/projects/mb_mn_transmission/document_library.shtml). We are accepting comments until November 30, 2018. The draft plans are linked here:
https://www.hydro.mb.ca/projects/mb_mn_transmission/document_library.shtml

Thank you and I look forward to seeing you on November 14!

Sarah Coughlin
Senior Environmental Specialist
Licensing & Environmental Assessment
Transmission, Manitoba Hydro
360 Portage Ave, Winnipeg, MB
w (204) 360-3016
c (204) 918-9848
scoughlin@hydro.mb.ca

Figure F Screen shot of an email sent to the MMTP Monitoring Committee

Below is a follow-up email sent to the MMTP Monitoring Committee (Figure G).

From: Coughlin, Sarah

Sent: Thursday, November 01, 2018 11:30 AM

Cc: MMTP

Subject: Manitoba Minnesota Transmission Project Draft Environmental Protection Plan Review

Good morning. As part of our ongoing engagement on the Manitoba Minnesota Transmission Project we would like to notify you that we have posted Draft Environmental Protection and Management Plans on the Project website (https://www.hydro.mb.ca/projects/mb_mn_transmission/document_library.shtml) and are looking to gather feedback on these plans by November 30th.

Please note that notification that these plans have been posted is also being shared with landowners, participants of the MMTP Monitoring Committee, and those that have signed up for e-blast notifications so you may have already received this notice through another communication avenue.

Each of these draft plans, guides contractors and field personnel while constructing the Manitoba-Minnesota Transmission Project in a manner that meets environmental legislation requirements and protects the environment. It is noted below where the plan is new or updated since provided initially through the regulatory process:

- draft Environmental Monitoring Plan (updated)
- draft Construction Environmental Protection Plan (updated)
- draft Cultural and Heritage Resources Protection Plan (updated)
- draft Biosecurity Management Plan (new draft plan)
- draft Clearing Management Plan (new draft plan)
- draft Right-of-Way Habitat Management Plan for Managing Critical Golden-winged Warbler Habitat during Construction and Operation(no change)
- draft Erosion and Sediment Control Plan (new draft plan)
- draft Navigational Safety Plan Summary (new draft plan)
- draft Rehabilitation and Invasive Species Management Plan (updated)
- draft Waste and Recycling Management Plan (new draft plan)
- draft Access Management Plan (updated)

Feel free to contact me ((204)360-3016) should you have feedback you would like to provide, or you are welcome to make use of the comment forms that are available on the website as well.

We look forward to hearing your feedback or responding to questions about this notification.

Sarah Coughlin

Senior Environmental Specialist

Licensing & Environmental Assessment

Transmission, Manitoba Hydro

360 Portage Ave, Winnipeg, MB

w (204) 360-3016

c (204) 918-9848

scoughlin@hydro.mb.ca

Figure G Follow-up email sent to the MMTP Monitoring Committee

Below is a screen shot of an email sent to interested parties (Figure H) and a list of the interested parties (Table 4)

As part of our ongoing engagement on the Manitoba Minnesota Transmission Project we would like to notify you that we have posted Draft Environmental Protection and Management Plans on the Project website (https://www.hydro.mb.ca/projects/mb_mn_transmission/document_library.shtml) and are looking to gather feedback on these plans by November 30th. You are receiving this email as you were a participant in the Clean Environment Commission Hearings and the National Energy Board hearing process for the Project.

(please note that notification that these plans have been posted is also being shared with landowners, participants of the MMTP Monitoring Committee, and those that have signed up for e-blast notifications so you may have already received this notice through another communication avenue)

Most of these draft plans were shared prior to, or during, the hearing processes. It is noted below where the plan is new since the hearing process, or updated since that time. Each of these draft plans, guides contractors and field personnel while constructing the Manitoba-Minnesota Transmission Project in a manner that meets environmental legislation requirements and protects the environment.

- draft Environmental Monitoring Plan (updated)
- draft Construction Environmental Protection Plan (updated)
- draft Cultural and Heritage Resources Protection Plan (updated)
- draft Biosecurity Management Plan (new draft plan)
- draft Clearing Management Plan (new draft plan)
- draft Right-of-Way Habitat Management Plan for Managing Critical Golden-winged Warbler Habitat during Construction and Operation(no change)
- draft Erosion and Sediment Control Plan (new draft plan)
- draft Navigational Safety Plan Summary (new draft plan)
- draft Rehabilitation and Invasive Species Management Plan (updated)
- draft Waste and Recycling Management Plan (new draft plan)
- draft Access Management Plan (updated)

Feel free to contact me (204-360-7677) or Sarah Coughlin (204-360-3016) should you have feedback you would like to provide, or you are welcome to make use of the comment forms that are available on the website as well.

We look forward to hearing your feedback.

Kind regards,

Maggie Bratland

Figure H Sample email sent to interested parties

Table 4 Manitoba Hydro's list of interested parties for the Project includes the following organizations

Interested parties list
Beausejour Community Planning Services
Beef Producers of Manitoba
Bird Atlas
Canadian Parks and Wilderness Society (CPAWS)
City of Steinbach
City of Winnipeg
Consumers Association of Canada
Cooks Creek Conservation District
Dairy Farmers of Manitoba
DOA Outfitters

Interested parties list

Ducks Unlimited

Forest Industry Association of Manitoba

Green Action Centre

HyLife, Land Manager

Integrated Resource Management Team (Eastern Region)

Keystone Agricultural Producers

La Salle Redboine Conservation District

Local Urban District of Richer, Committee Member-Chairperson

Macdonald-Ritchot Planning District

Manitoba Indigenous and Northern Relations

Manitoba Aerial Applicators

Manitoba Agriculture (Land Use)

Manitoba Agriculture (Agri-Resource Branch)

Manitoba Association of Cottage Owners

Manitoba Bass Anglers (MBA)

Manitoba Canoe & Kayak Centre - Winnipeg

Manitoba Chamber of Commerce

Manitoba Chicken Producers

Manitoba Climate Change and Air Quality

Manitoba Crown Lands

Manitoba Fly Fishing Association (MFFA)

Manitoba Forestry Association

Manitoba Groundwater Management

Manitoba Habitat Heritage Corporation

Manitoba Historic Resources Branch

Manitoba Infrastructure

Manitoba Infrastructure Highway Engineering

Manitoba Infrastructure Highway Regional Operations

Office of Fire Commissioner

Manitoba Lodges and Outfitters Association

Manitoba Paddling Association

Manitoba Parks and Regional Services - Parks and Protected Spaces

Manitoba Petroleum Branch

Manitoba Pork Council (Industry Services Co-ordinator)

Manitoba Protected Areas Initiative

Manitoba Public Health

Manitoba Resource Development Division Growth, Enterprise and Trade

Manitoba Sustainable Development

Manitoba Indigenous and Northern Relations

Manitoba Sustainable Development (Office of Drinking Water)

Interested parties list

Manitoba Sustainable Development (Water Control Works and Drainage Licensing)

Manitoba Sustainable Development (Water Quality Management)

Manitoba Trails Association

Manitoba Trappers Association

Manitoba Sustainable Development (Fish and Wildlife)

Manitoba Water Use Licensing

Manitoba Woodlot Association

Maple Leaf Agri-Farms

Nature Conservancy of Canada

Organic Producers Association of Manitoba Co-Operatives Inc.

Paddle Manitoba

Portage la Prairie Community Planning Services

REDBOINE BOATING CLUB

Rural Municipality of Glenboro South - Cypress

Rural Municipality of Headingley

Rural Municipality of La Broquerie

Rural Municipality of McDonald

Rural Municipality of Piney

Rural Municipality of Ritchot

Rural Municipality of Rosser

Rural Municipality of Springfield

Rural Municipality of Ste. Anne

Rural Municipality of Stuartburn

Rural Municipality of Tache

Ruth Marr Consulting

Save the Seine

Seine-Rat River Conservation District

Sharp-Tails Plus Foundation

Sno-Man Inc

South East Snoriders

Southwood Golf & Country Club

St. Norbert Ward - Winnipeg

St. Vital Ward - Winnipeg

Steinbach Community Planning Services

Steinbach Game & Fish Gun Range Inc

Town of St. Pierre Jolys

Town of Ste. Anne

Trails Manitoba

TransCanada Pipelines Limited

Interested parties list
Travel Manitoba
Village of Glenboro
Wa Ni Ska Tan
Walleye Anglers Association of Manitoba (WAAM)
Wilderness Society
Winnipeg Rowing Club