

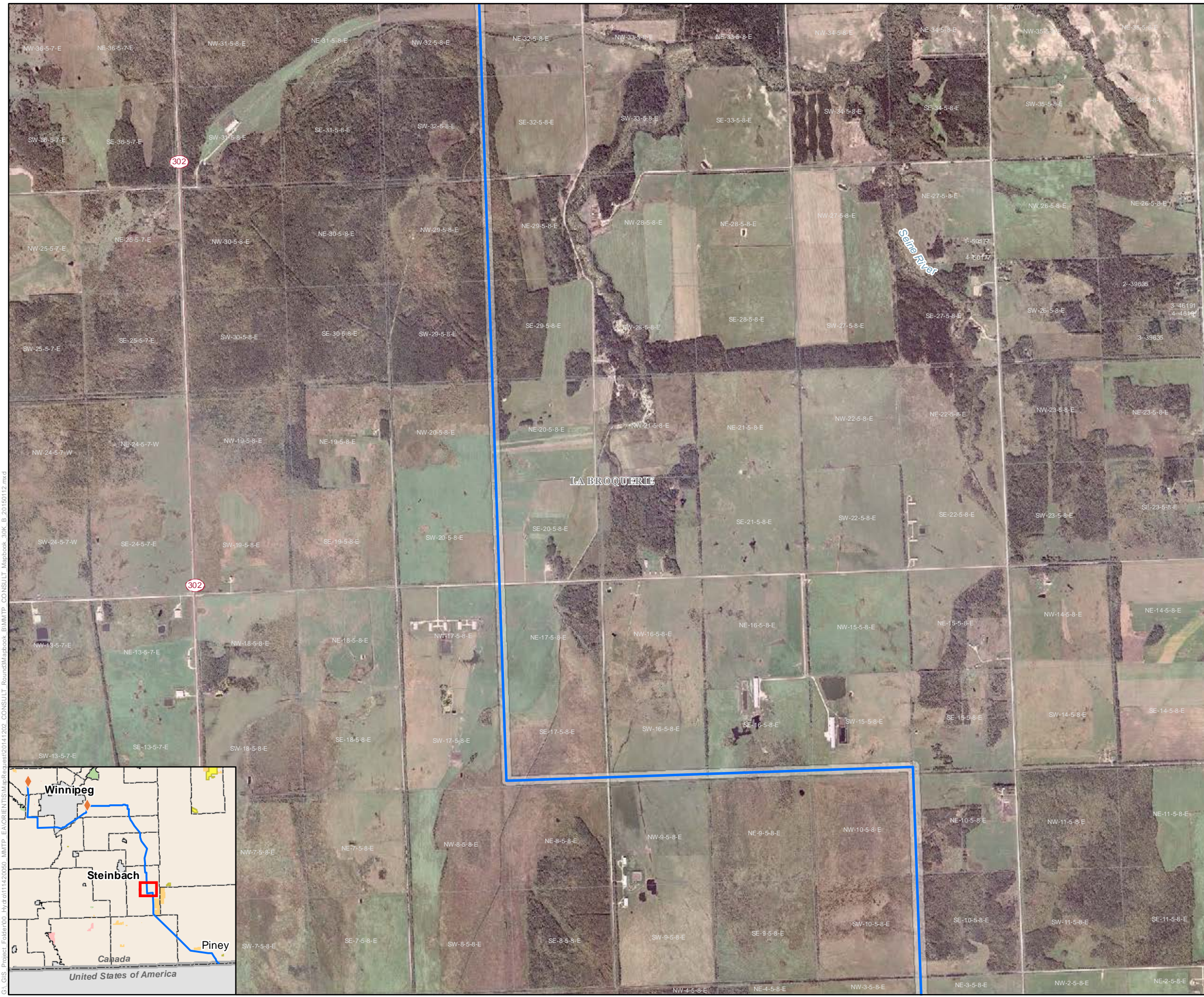
## Manitoba-Minnesota Transmission Project

### Project Infrastructure

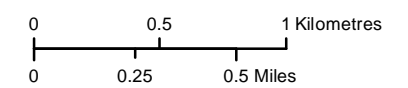
- Preferred Route
- Project Development Area

### Landbase

- Community
- Trans Canada Highway
- Provincial Highway
- Provincial Road
- Railway
- City / Town
- First Nation Lands
- Rural Municipality
- Ecological Reserve
- Wildlife Management Area
- Provincial Park



Coordinate System: UTM Zone 14N NAD83  
 Data Source: MBHydro, ProvMB, NRCAN  
 Date Created: January 13, 2015



1:30,000

### Preferred Route