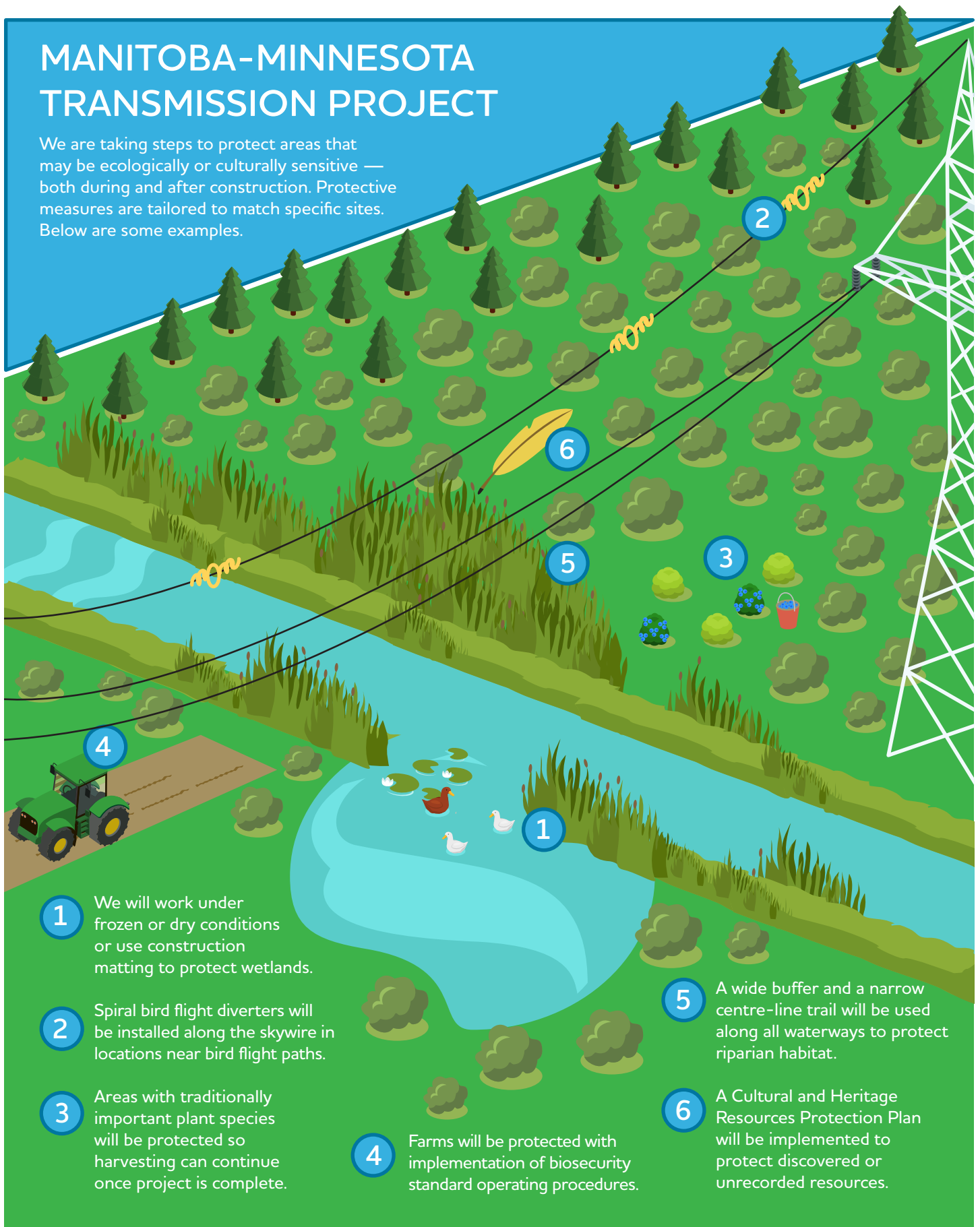


MANITOBA-MINNESOTA TRANSMISSION PROJECT

We are taking steps to protect areas that may be ecologically or culturally sensitive — both during and after construction. Protective measures are tailored to match specific sites. Below are some examples.



1 We will work under frozen or dry conditions or use construction matting to protect wetlands.

2 Spiral bird flight diverters will be installed along the skywire in locations near bird flight paths.

3 Areas with traditionally important plant species will be protected so harvesting can continue once project is complete.

4 Farms will be protected with implementation of biosecurity standard operating procedures.

5 A wide buffer and a narrow centre-line trail will be used along all waterways to protect riparian habitat.

6 A Cultural and Heritage Resources Protection Plan will be implemented to protect discovered or unrecorded resources.

In addition to site-specific measures, a robust monitoring program will confirm effectiveness of mitigation. Third-party and Manitoba Hydro inspectors will follow site activities. Please contact Manitoba Hydro at 204-360-7888 or 1-877-343-1631 with any questions.