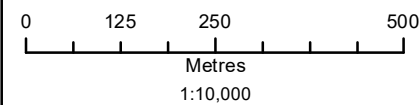


DOCUMENT PATH: \\GEO\DATA\TILEA\GIS\ORIENT\IS\PRJ_PW75\ANALYSIS\20220608 SEGMENT\MAPBOOK GCL\OUT\IS\IPW75_MAPBOOK_BSIZE_10K_MH.MXD



Coordinate System: UTM Zone 14N NAD83
Data Source: MB Hydro, ProvMB, NRCAN
Date Created: June 29, 2022
Version: Draft



Land Base

- Highway
- Major Road
- Local Road
- Railway (Operational)
- Railway (Discontinued)
- Provincial Park
- Wildlife Management Area
- Metis Natural Resource Harvesting Zone

Existing Infrastructure

- Electrical Station
- Generating Station
- Existing ≥69kV Transmission Line

Project Infrastructure

- PW75 Alternative Route Segment
- PW75 Established Route (Pointe du Bois G.S. to Lee River DSC)

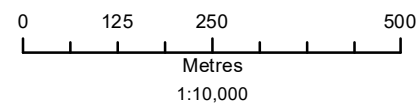
Alternative Route Segments Pointe du Bois (PW75) Transmission Project

Draft: For Discussion Purposes Only

DOCUMENT PATH: \\GEO\DATA\TILEA\1\GIS\ORIENT\IS\PRJ_PW75\ANALYSIS\20220608 SEGMENT\MAPBOOK GCL\OUT\IS\IPW75_MAPBOOK_BSIZE_10K_MH.MXD



Coordinate System: UTM Zone 14N NAD83
Data Source: MB Hydro, ProvMB, NRCAN
Date Created: June 29, 2022
Version: Draft



Land Base

- Highway
- Major Road
- Local Road
- Railway (Operational)
- Railway (Discontinued)
- Provincial Park
- Wildlife Management Area
- Metis Natural Resource Harvesting Zone

Existing Infrastructure

- Electrical Station
- Generating Station
- Existing ≥69kV Transmission Line

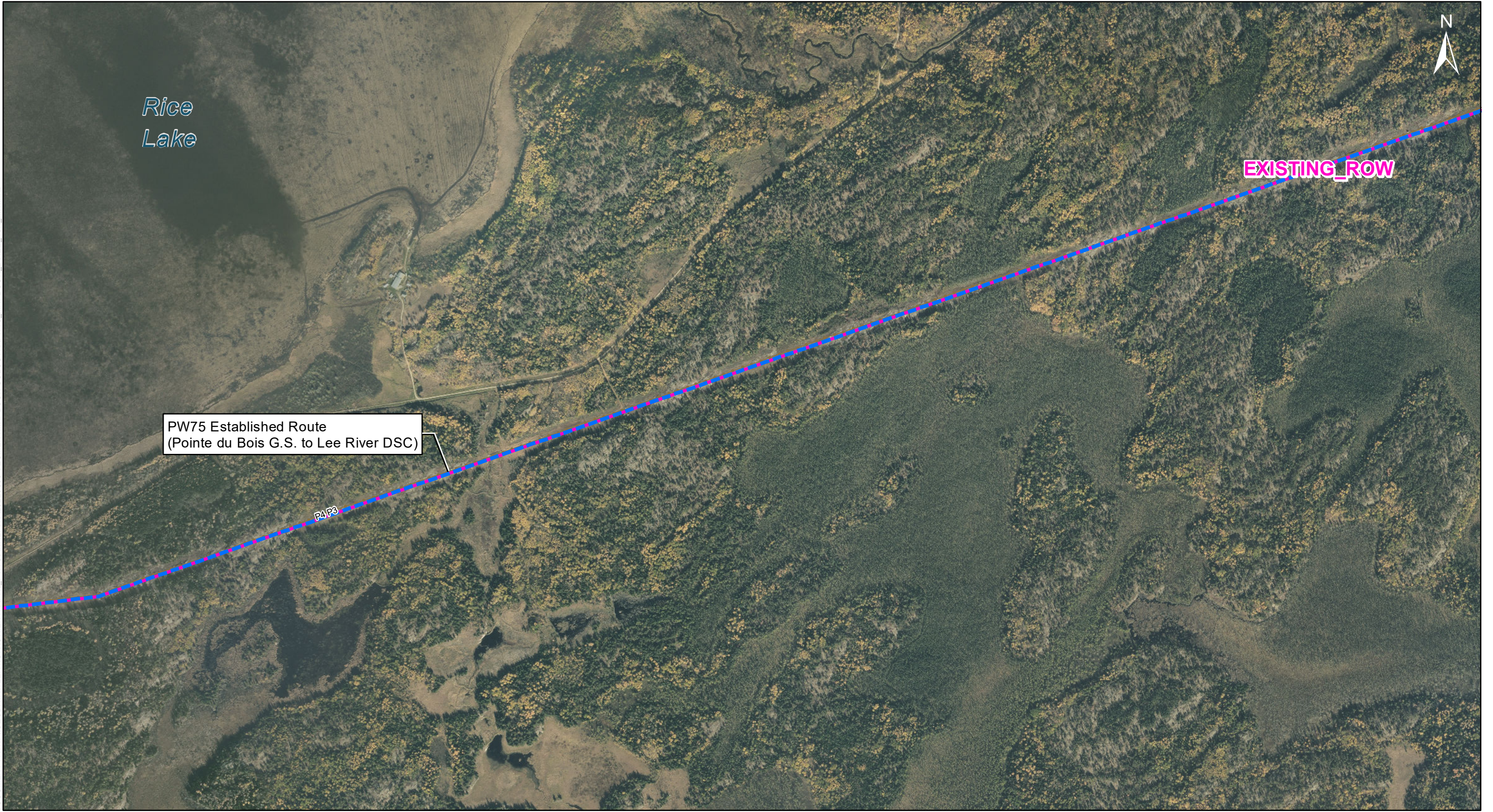
Project Infrastructure

- PW75 Alternative Route Segment
- PW75 Established Route (Pointe du Bois G.S. to Lee River DSC)

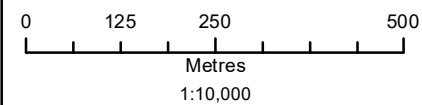
Alternative Route Segments
Pointe du Bois (PW75) Transmission Project

Draft: For Discussion Purposes Only

DOCUMENT PATH: \\GEO\DATA\TILEA\1\GIS\ORIENT\IS\PRJ_PW75\ANALYSIS\20220608_SEGMENT\MAPBOOK_GCL\OUT\IS\IPW75_MAPBOOK_BSIZE_10K_MH.MXD



Coordinate System: UTM Zone 14N NAD83
Data Source: MB Hydro, ProvMB, NRCAN
Date Created: June 29, 2022
Version: Draft



Land Base

- Highway
- Major Road
- Local Road
- Railway (Operational)
- Railway (Discontinued)
- Provincial Park
- Wildlife Management Area
- Metis Natural Resource Harvesting Zone

Existing Infrastructure

- Electrical Station
- Generating Station
- Existing ≥69kV Transmission Line

Project Infrastructure

- PW75 Alternative Route Segment
- PW75 Established Route (Pointe du Bois G.S. to Lee River DSC)

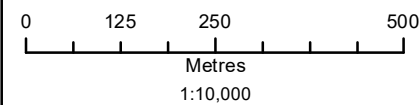
Alternative Route Segments
Pointe du Bois (PW75) Transmission Project

Draft: For Discussion Purposes Only

DOCUMENT PATH: \\GEOGDATA\\TILEA\\GIS\\ORIENT\\IS\\PRJ_P\\PW75\\ANALYSIS\\20220608 SEGMENT\\MAPBOOK GCL\\OUT\\IS\\PW75 MAPBOOK_BSIZE 10K_MH.MXD



Coordinate System: UTM Zone 14N NAD83
Data Source: MB Hydro, ProvMB, NRCAN
Date Created: June 29, 2022
Version: Draft



Land Base

- Highway
- Major Road
- Local Road
- Railway (Operational)
- Railway (Discontinued)
- Provincial Park
- Wildlife Management Area
- Metis Natural Resource Harvesting Zone

Existing Infrastructure

- Electrical Station
- Generating Station
- Existing ≥ 69 kV Transmission Line

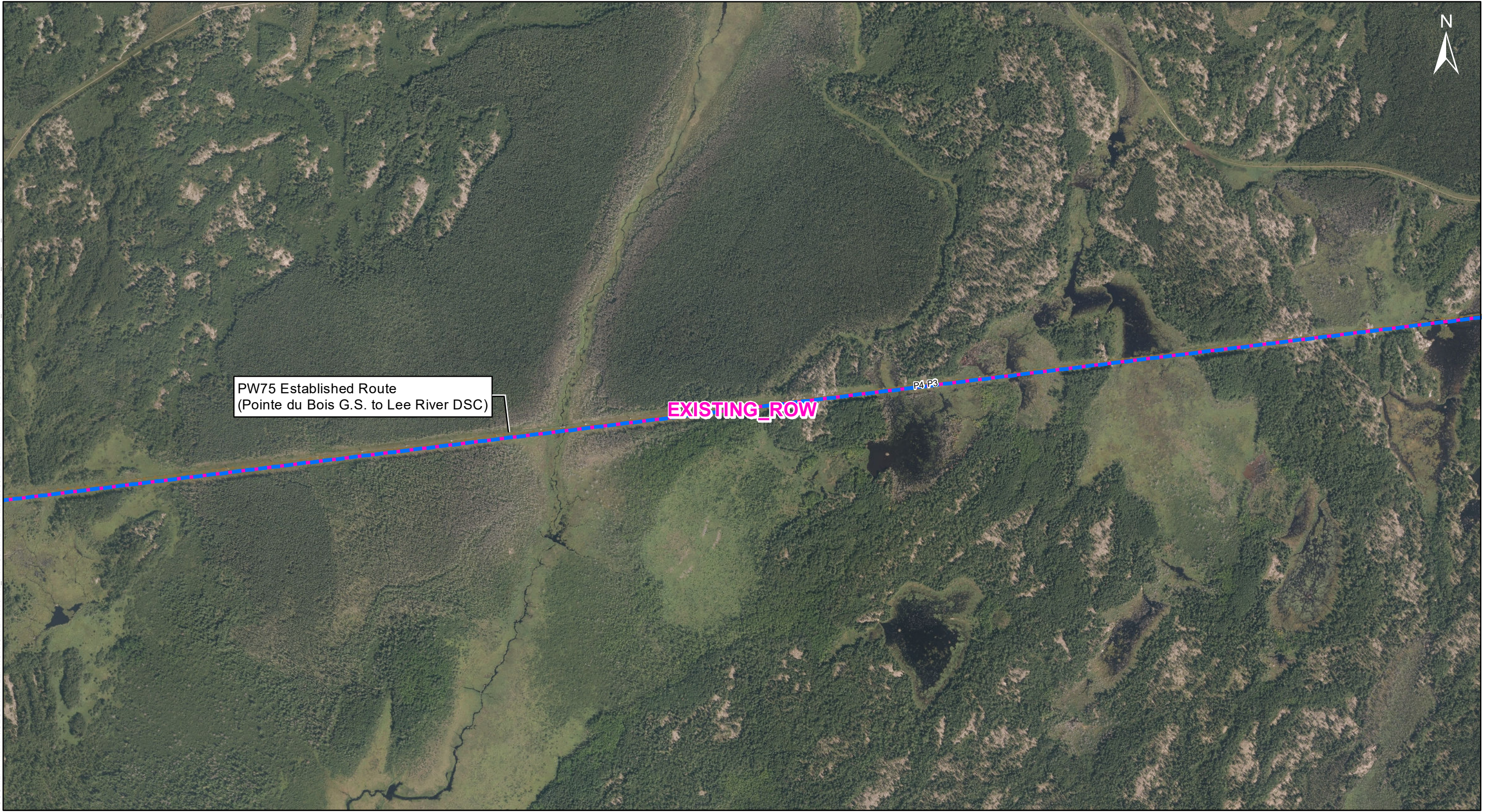
Project Infrastructure

- PW75 Alternative Route Segment
- PW75 Established Route (Pointe du Bois G.S. to Lee River DSC)

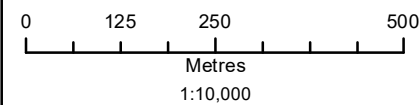
Alternative Route Segments
Pointe du Bois (PW75) Transmission Project

Draft: For Discussion Purposes Only

DOCUMENT PATH: \\GEO\DATA\TILEA\GIS\ORIENT\IS\PRJ_PW75\ANALYSIS\20220608_SEGMENT\MAPBOOK_GCL\OUT\IS\PW75_MAPBOOK_BSIZ_10K_MH.MXD



Coordinate System: UTM Zone 14N NAD83
Data Source: MB Hydro, ProvMB, NRCAN
Date Created: June 29, 2022
Version: Draft



Land Base

- Highway
- Major Road
- Local Road
- Railway (Operational)
- Railway (Discontinued)
- Provincial Park
- Wildlife Management Area
- Metis Natural Resource Harvesting Zone

Existing Infrastructure

- Electrical Station
- Generating Station
- Existing ≥ 69 kV Transmission Line

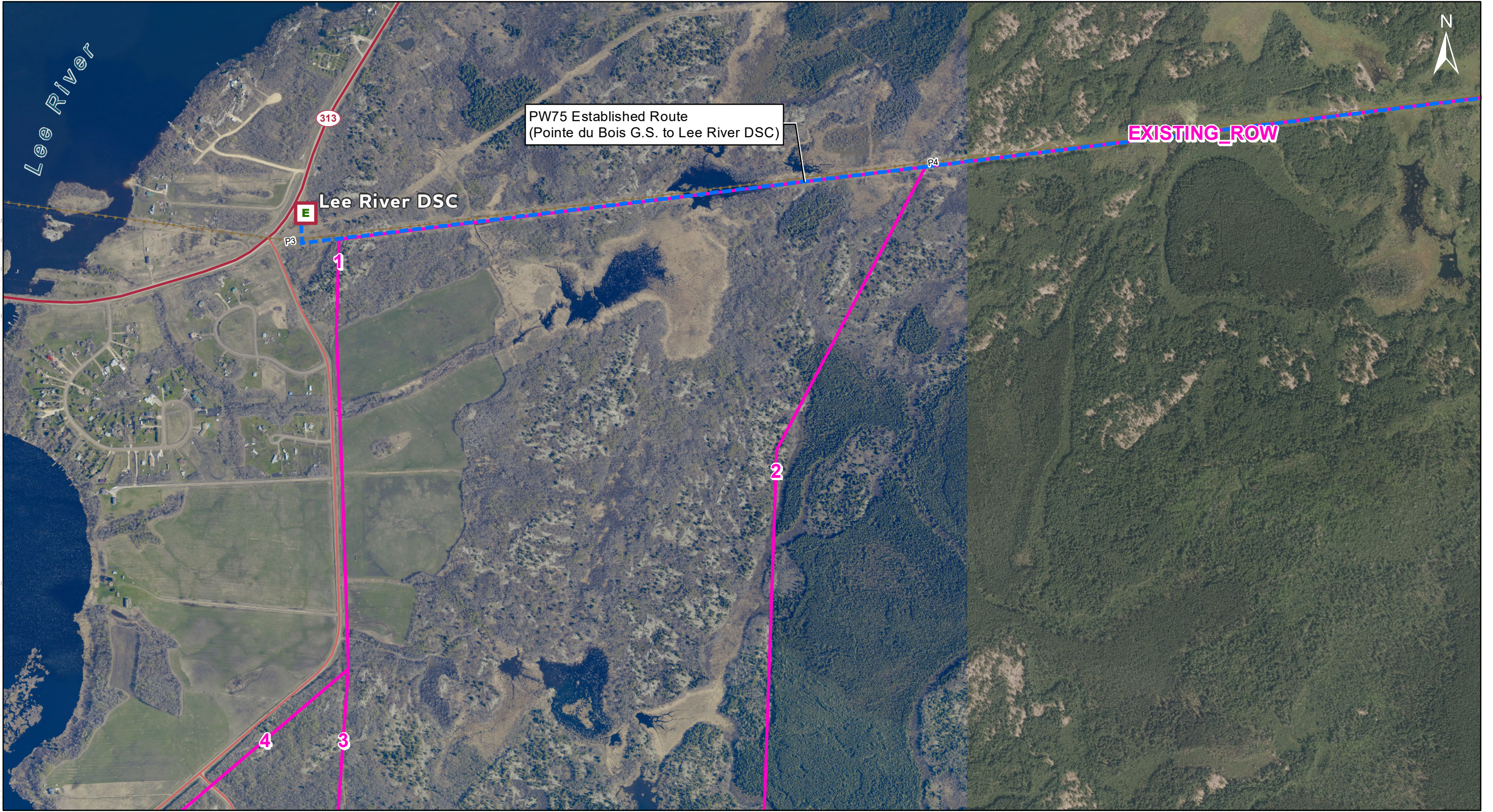
Project Infrastructure

- PW75 Alternative Route Segment
- PW75 Established Route (Pointe du Bois G.S. to Lee River DSC)

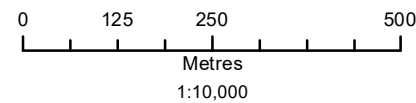
Alternative Route Segments Pointe du Bois (PW75) Transmission Project

Draft: For Discussion Purposes Only

DOCUMENT PATH: \\GEO\DATA\TILEA\GIS\ORIENT\IS\PRJ_PW75\ANALYSIS\20220608 SEGMENT\MAPBOOK GCL\OUT\IS\IPW75_MAPBOOK_BSIZ 10K_MH.MXD



Coordinate System: UTM Zone 14N NAD83
Data Source: MB Hydro, ProvMB, NRCAN
Date Created: June 29, 2022
Version: Draft



Land Base

- Highway
- Major Road
- Local Road
- Railway (Operational)
- Railway (Discontinued)
- Provincial Park
- Wildlife Management Area
- Metis Natural Resource Harvesting Zone

Existing Infrastructure

- Electrical Station
- Generating Station
- Existing ≥69kV Transmission Line

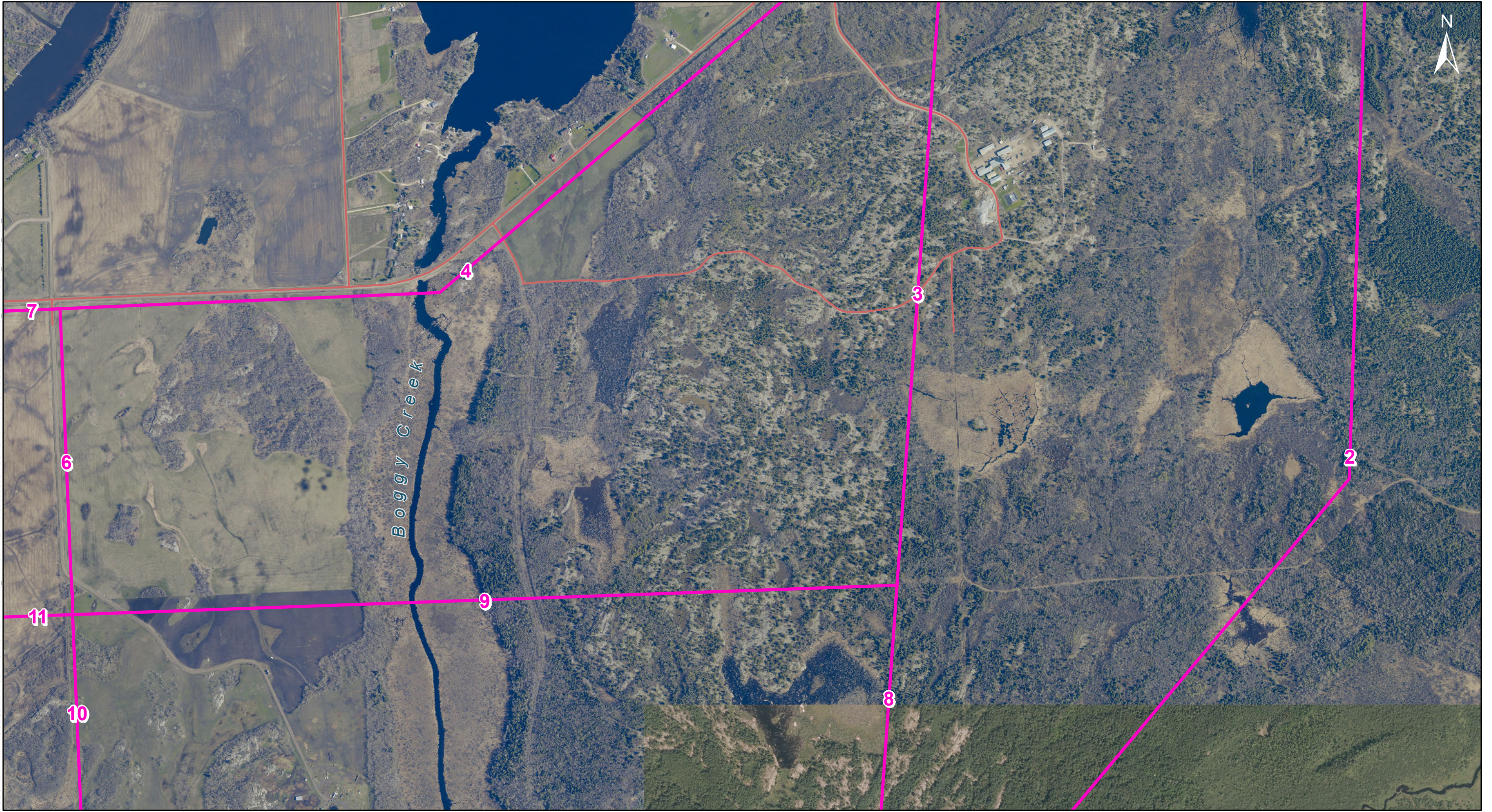
Project Infrastructure

- PW75 Alternative Route Segment
- PW75 Established Route (Pointe du Bois G.S. to Lee River DSC)

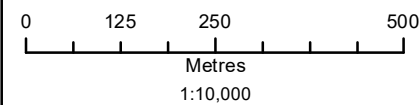
Alternative Route Segments Pointe du Bois (PW75) Transmission Project

Draft: For Discussion Purposes Only

DOCUMENT PATH: \\GEO\DATA\TILEA\GIS\ORIENT\IS\PRJ_PW75\ANALYSIS\20220608_SEGMENT\MAPBOOK_GCL\OUT\IS\IPW75_MAPBOOK_BSIZ_10K_MH.MXD



Coordinate System: UTM Zone 14N NAD83
Data Source: MB Hydro, ProvMB, NRCAN
Date Created: June 29, 2022
Version: Draft



Land Base

- Highway
- Major Road
- Local Road
- Railway (Operational)
- Railway (Discontinued)
- Provincial Park
- Wildlife Management Area
- Metis Natural Resource Harvesting Zone

Existing Infrastructure

- Electrical Station
- Generating Station
- Existing ≥ 69 kV Transmission Line

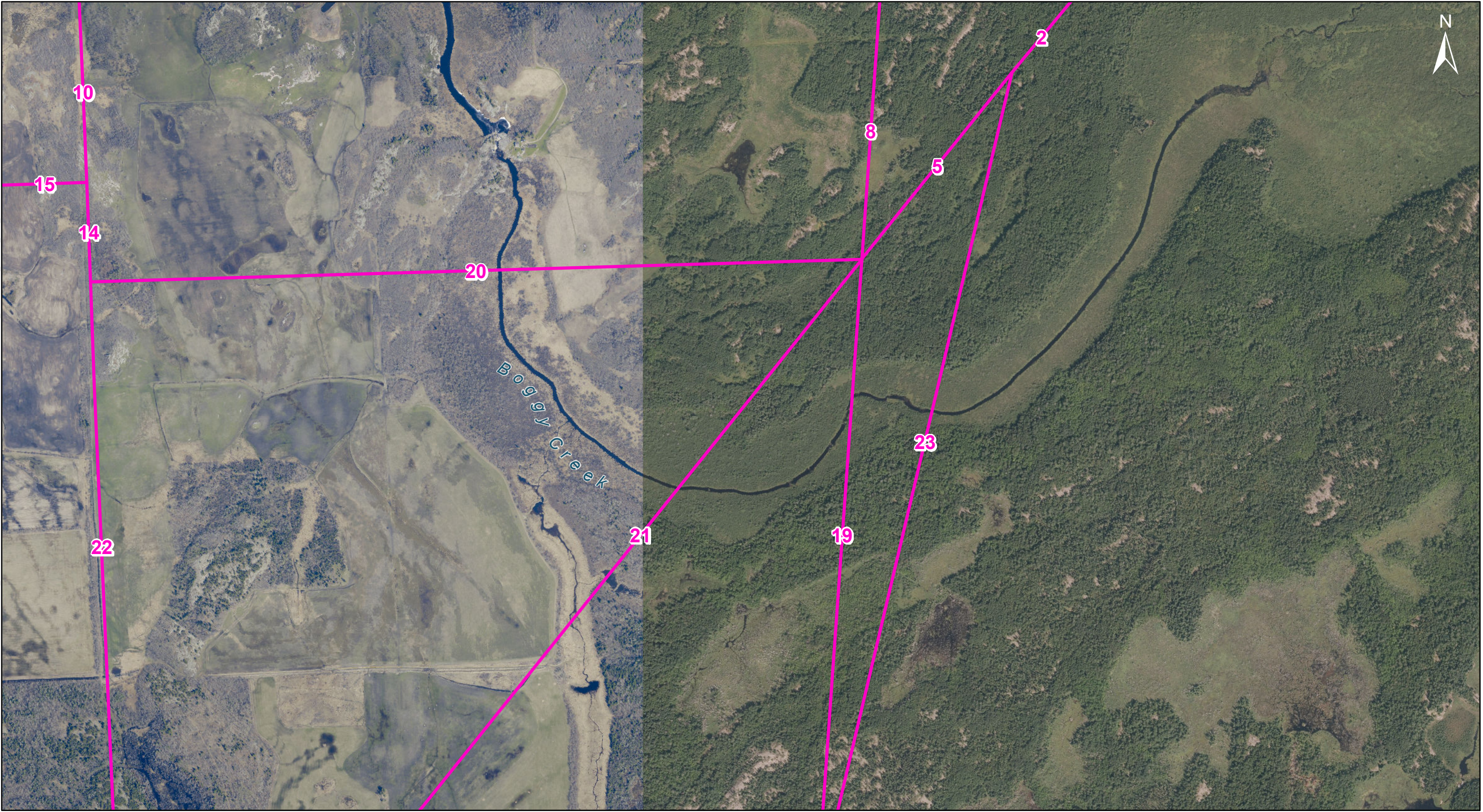
Project Infrastructure

- PW75 Alternative Route Segment
- PW75 Established Route (Pointe du Bois G.S. to Lee River DSC)

Alternative Route Segments Pointe du Bois (PW75) Transmission Project

Draft: For Discussion Purposes Only

DOCUMENT PATH: \\GEODATA\\TILEA\\GIS\\ORIENT\\IS\\PRJ_PW75\\ANALYSIS\\20220608 SEGMENT\\MAPBOOK GCL\\OUT\\IS\\PW75 MAPBOOK_BSIZE 10K_MH.MXD



Coordinate System: UTM Zone 14N NAD83
Data Source: MB Hydro, ProvMB, NRCAN
Date Created: June 29, 2022
Version: Draft

0 125 250 500
Metres
1:10,000

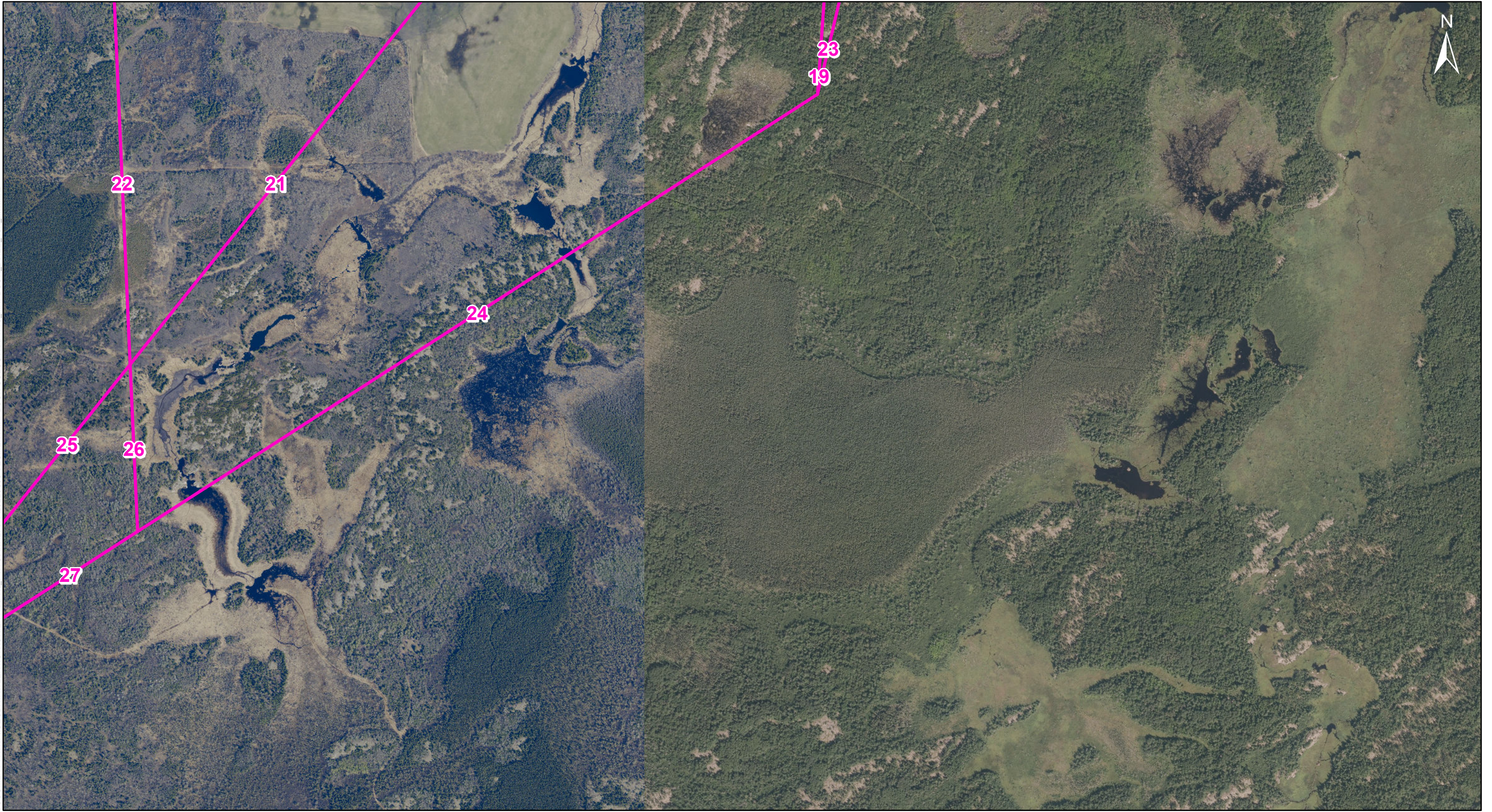
- Land Base**
- Highway
 - Major Road
 - Local Road
 - Railway (Operational)
 - Railway (Discontinued)
 - Provincial Park
 - Wildlife Management Area
 - Metis Natural Resource Harvesting Zone
- Existing Infrastructure**
- Electrical Station
 - Generating Station
 - Existing ≥69kV Transmission Line

- Project Infrastructure**
- PW75 Alternative Route Segment
 - PW75 Established Route (Pointe du Bois G.S. to Lee River DSC)

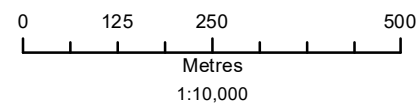
Alternative Route Segments
Pointe du Bois (PW75) Transmission Project

Draft: For Discussion Purposes Only

DOCUMENT PATH: \\GEODATA\\TILEA\\GIS\\ORIENT\\IS\\PRJ_P\\PW75\\ANALYSIS\\20220608_SEGMENT\\MAPBOOK_GCL\\OUT\\IS\\PW75_MAPBOOK_BS\\SIZE_10K_MH.MXD



Coordinate System: UTM Zone 14N NAD83
Data Source: MB Hydro, ProvMB, NRCAN
Date Created: June 29, 2022
Version: Draft



Land Base

- Highway
- Major Road
- Local Road
- Railway (Operational)
- Railway (Discontinued)
- Provincial Park
- Wildlife Management Area
- Metis Natural Resource Harvesting Zone

Existing Infrastructure

- Electrical Station
- Generating Station
- Existing ≥69kV Transmission Line

Project Infrastructure

- PW75 Alternative Route Segment
- PW75 Established Route (Pointe du Bois G.S. to Lee River DSC)

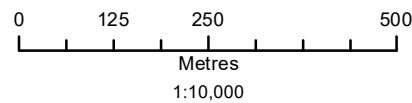
Alternative Route Segments
Pointe du Bois (PW75) Transmission Project

Draft: For Discussion Purposes Only

DOCUMENT PATH: \\GEODATA\\TILEA\\GIS\\ORIENT\\IS\\PRJ_PW75\\ANALYSIS\\20220608_SEGMENT\\MAPBOOK_GCL\\OUT\\IS\\PW75_MAPBOOK_BSIZE_10K_MH.MXD



Coordinate System: UTM Zone 14N NAD83
Data Source: MB Hydro, ProvMB, NRCAN
Date Created: June 29, 2022
Version: Draft



- Land Base**
- Highway
 - Major Road
 - Local Road
 - Railway (Operational)
 - Railway (Discontinued)
 - Provincial Park
 - Wildlife Management Area
 - Metis Natural Resource Harvesting Zone

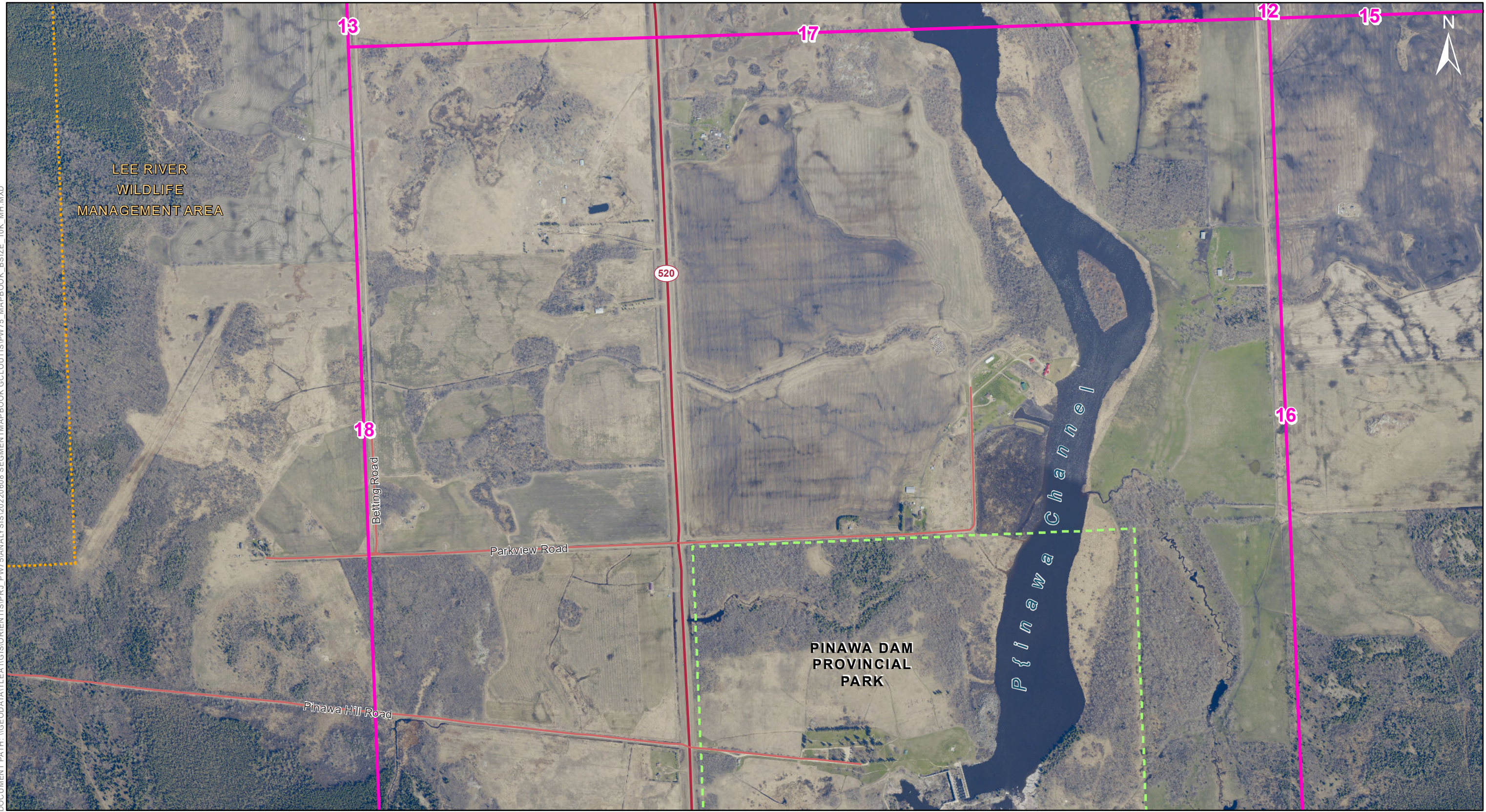
- Existing Infrastructure**
- Electrical Station
 - Generating Station
 - Existing ≥69kV Transmission Line

- Project Infrastructure**
- PW75 Alternative Route Segment
 - PW75 Established Route (Pointe du Bois G.S. to Lee River DSC)

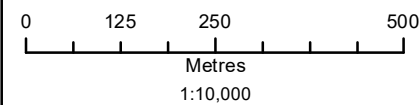
Alternative Route Segments Pointe du Bois (PW75) Transmission Project

Draft: For Discussion Purposes Only

DOCUMENT PATH: \\GEO\DATA\TILEA\GIS\ORIENT\IS\PRJ_PW75\ANALYSIS\20220608 SEGMENT\MAPBOOK GCL\OUT\IS\IPW75_MAPBOOK_BSIZE_10K_MH.MXD



Coordinate System: UTM Zone 14N NAD83
Data Source: MB Hydro, ProvMB, NRCAN
Date Created: June 29, 2022
Version: Draft



- Land Base**
- Highway
 - Major Road
 - Local Road
 - Railway (Operational)
 - Railway (Discontinued)
 - Provincial Park
 - Wildlife Management Area
 - Metis Natural Resource Harvesting Zone

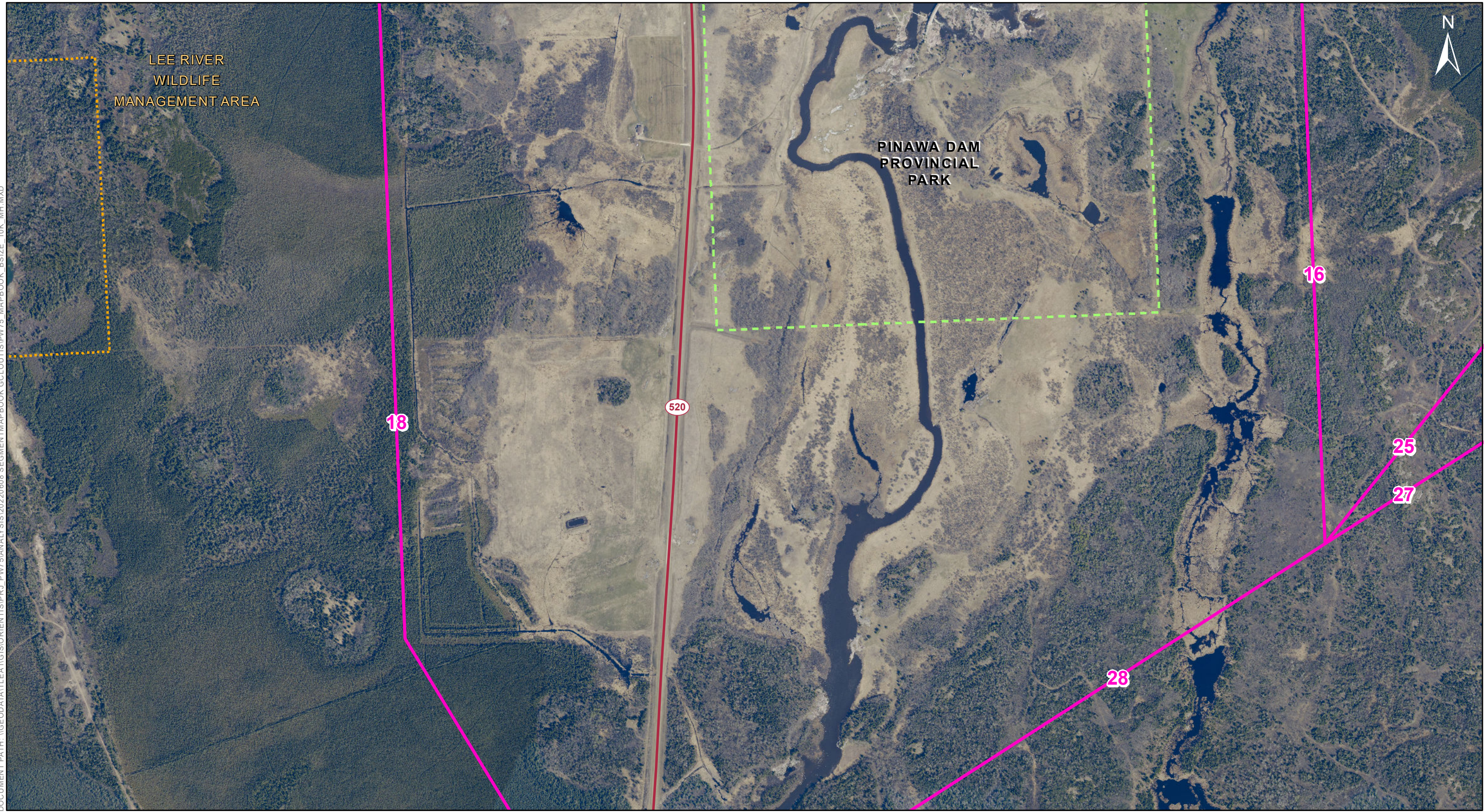
- Existing Infrastructure**
- Electrical Station
 - Generating Station
 - Existing ≥69kV Transmission Line

- Project Infrastructure**
- PW75 Alternative Route Segment
 - PW75 Established Route (Pointe du Bois G.S. to Lee River DSC)

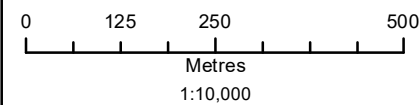
Alternative Route Segments Pointe du Bois (PW75) Transmission Project

Draft: For Discussion Purposes Only

DOCUMENT PATH: \\GEO\DATA\TILEA\GIS\ORIENT\IS\PRJ_PW75\ANALYSIS\20220608 SEGMENT\MAPBOOK GCL\OUT\IS\IPW75_MAPBOOK_BSIZE_10K_MH.MXD



Coordinate System: UTM Zone 14N NAD83
Data Source: MB Hydro, ProvMB, NRCAN
Date Created: June 29, 2022
Version: Draft



Land Base

- Highway
- Major Road
- Local Road
- Railway (Operational)
- Railway (Discontinued)
- Provincial Park
- Wildlife Management Area
- Metis Natural Resource Harvesting Zone

Existing Infrastructure

- Electrical Station
- Generating Station
- Existing ≥69kV Transmission Line

Project Infrastructure

- PW75 Alternative Route Segment
- PW75 Established Route (Pointe du Bois G.S. to Lee River DSC)

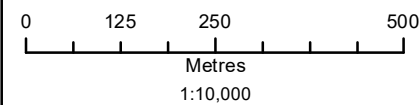
Alternative Route Segments Pointe du Bois (PW75) Transmission Project

Draft: For Discussion Purposes Only

DOCUMENT PATH: \\GEODATA\\TILEA\\GIS\\ORIENT\\IS\\PRJ_PW75\\ANALYSIS\\20220608_SEGMENT\\MAPBOOK_GCL\\OUT\\IS\\PW75_MAPBOOK_BSIZE_10K_MH.MXD



Coordinate System: UTM Zone 14N NAD83
Data Source: MB Hydro, ProvMB, NRCAN
Date Created: June 29, 2022
Version: Draft



Land Base

- Highway
- Major Road
- Local Road
- Railway (Operational)
- Railway (Discontinued)
- Provincial Park
- Wildlife Management Area
- Metis Natural Resource Harvesting Zone

Existing Infrastructure

- Electrical Station
- Generating Station
- Existing ≥69kV Transmission Line

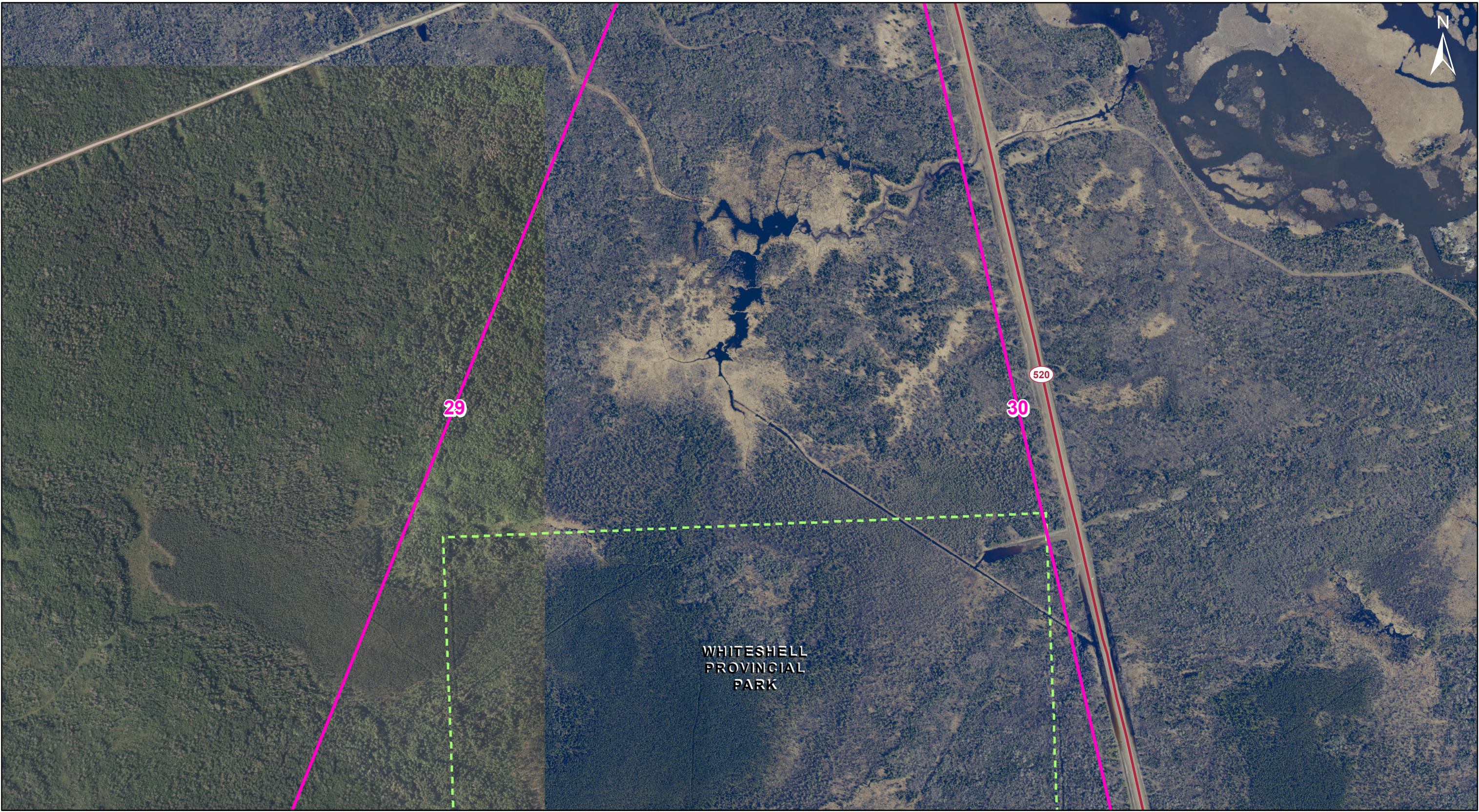
Project Infrastructure

- PW75 Alternative Route Segment
- PW75 Established Route (Pointe du Bois G.S. to Lee River DSC)

Alternative Route Segments
Pointe du Bois (PW75) Transmission Project

Draft: For Discussion Purposes Only

DOCUMENT PATH: \\GEODATA\\TILEA\\GIS\\ORIENT\\IS\\PRJ_P\\PW75\\ANALYSIS\\20220608_SEGMENT\\MAPBOOK_GCL\\OUT\\IS\\PW75_MAPBOOK_BSIZE_10K_MH.MXD



Coordinate System: UTM Zone 14N NAD83
Data Source: MB Hydro, ProvMB, NRCAN
Date Created: June 29, 2022
Version: Draft

0 125 250 500
Metres
1:10,000

- Land Base**
- Highway
 - Major Road
 - Local Road
 - Railway (Operational)
 - Railway (Discontinued)
 - Provincial Park
 - Wildlife Management Area
 - Metis Natural Resource Harvesting Zone

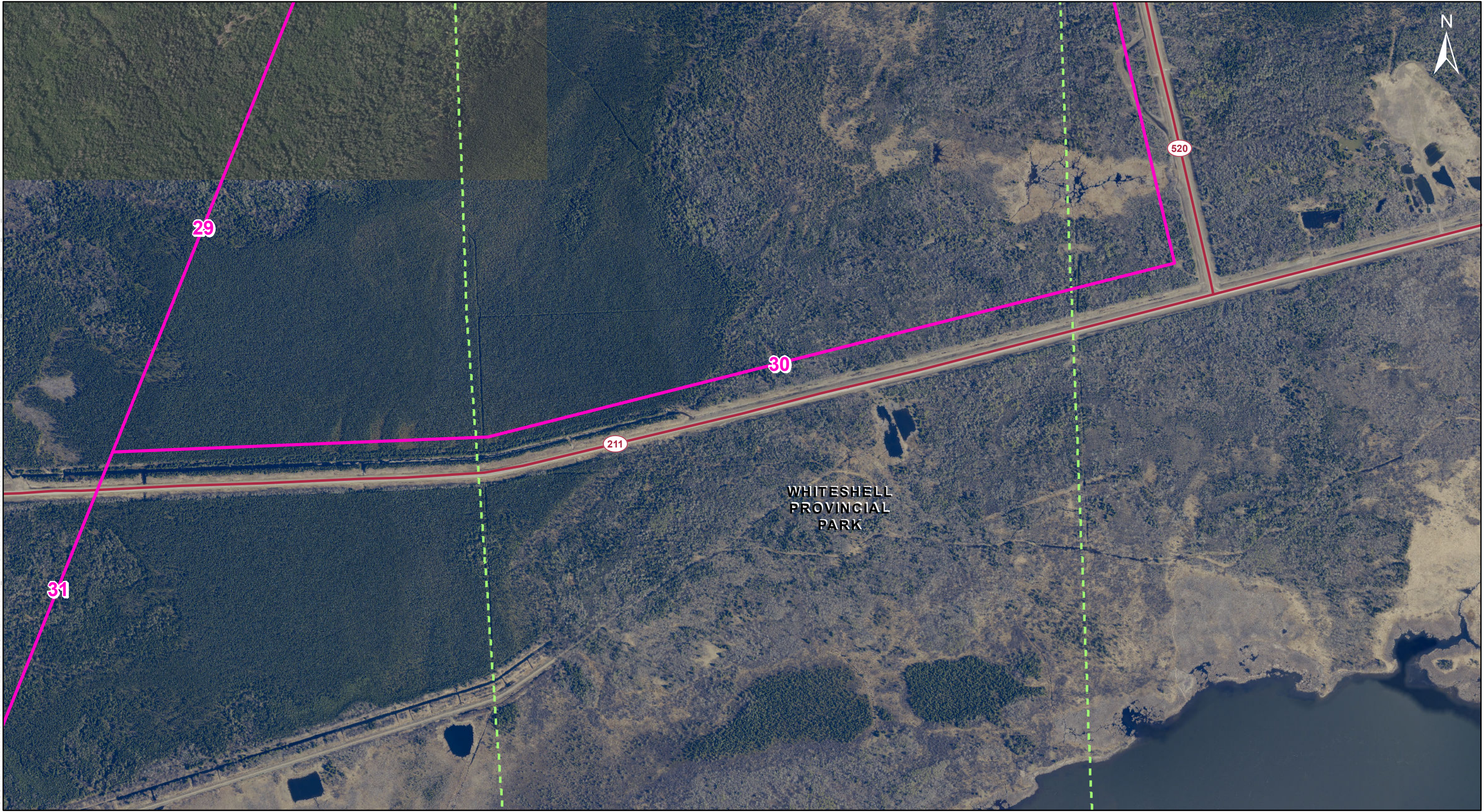
- Existing Infrastructure**
- Electrical Station
 - Generating Station
 - Existing ≥69kV Transmission Line

- Project Infrastructure**
- PW75 Alternative Route Segment
 - PW75 Established Route (Pointe du Bois G.S. to Lee River DSC)

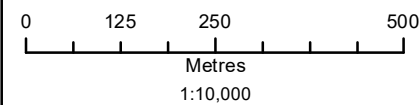
Alternative Route Segments Pointe du Bois (PW75) Transmission Project

Draft: For Discussion Purposes Only

DOCUMENT PATH: \\GEODATA\\TILEA\\GIS\\ORIENT\\IS\\PRJ_PW75\\ANALYSIS\\20220608 SEGMENT\\MAPBOOK GCL\\OUT\\IS\\PW75_MAPBOOK_BSIZE_10K_MH.MXD



Coordinate System: UTM Zone 14N NAD83
Data Source: MB Hydro, ProvMB, NRCAN
Date Created: June 29, 2022
Version: Draft



Land Base

- Highway
- Major Road
- Local Road
- Railway (Operational)
- Railway (Discontinued)
- Provincial Park
- Wildlife Management Area
- Metis Natural Resource Harvesting Zone

Existing Infrastructure

- Electrical Station
- Generating Station
- Existing ≥69kV Transmission Line

Project Infrastructure

- PW75 Alternative Route Segment
- PW75 Established Route (Pointe du Bois G.S. to Lee River DSC)

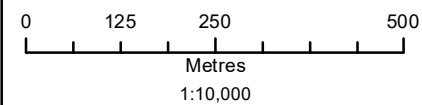
Alternative Route Segments Pointe du Bois (PW75) Transmission Project

Draft: For Discussion Purposes Only

DOCUMENT PATH: \\GEO\DATA\TILEA\1\GIS\ORIENT\IS\PRJ_PW75\ANALYSIS\20220608 SEGMENT\MAPBOOK GCL\OUT\IS\PW75_MAPBOOK_BSIZE_10K_MH.MXD



Coordinate System: UTM Zone 14N NAD83
Data Source: MB Hydro, ProvMB, NRCAN
Date Created: June 29, 2022
Version: Draft



Land Base

- Highway
- Major Road
- Local Road
- Railway (Operational)
- Railway (Discontinued)
- Provincial Park
- Wildlife Management Area
- Metis Natural Resource Harvesting Zone

Existing Infrastructure

- Electrical Station
- Generating Station
- Existing ≥69kV Transmission Line

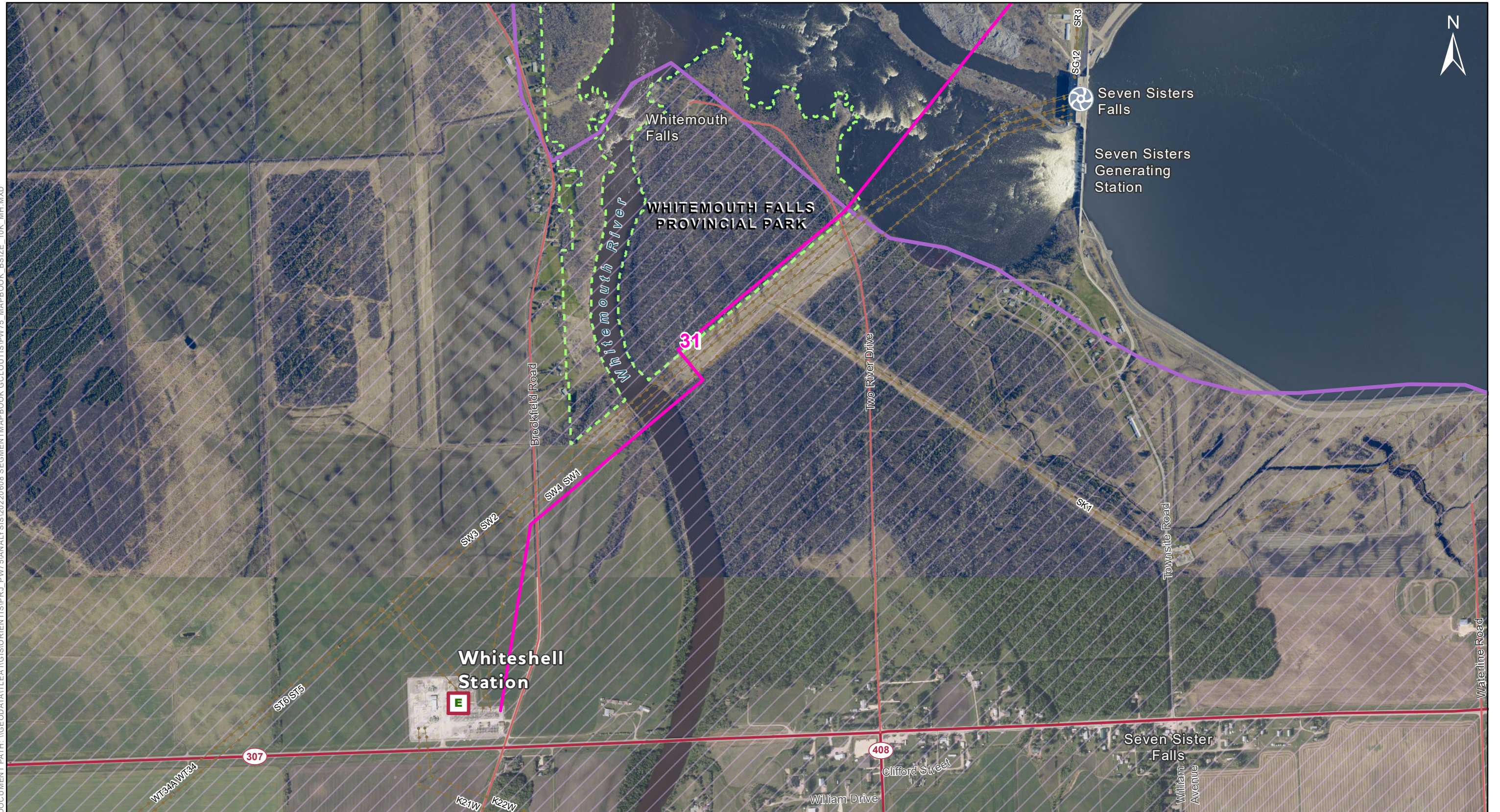
Project Infrastructure

- PW75 Alternative Route Segment
- PW75 Established Route (Pointe du Bois G.S. to Lee River DSC)

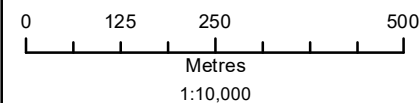
Alternative Route Segments
Pointe du Bois (PW75) Transmission Project

Draft: For Discussion Purposes Only

DOCUMENT PATH: \\GEODATA\\TILEA\\GIS\\ORIENT\\S\\PRJ_PW75\\ANALYSIS\\20220608 SEGMENT\\MAPBOOK GCL\\OUT\\S\\PW75 MAPBOOK_BSIZE_10K_MH.MXD



Coordinate System: UTM Zone 14N NAD83
Data Source: MB Hydro, ProvMB, NRCAN
Date Created: June 29, 2022
Version: Draft



Land Base

- Highway
- Major Road
- Local Road
- Railway (Operational)
- Railway (Discontinued)
- Provincial Park
- Wildlife Management Area
- Metis Natural Resource Harvesting Zone

Existing Infrastructure

- Electrical Station
- Generating Station
- Existing ≥69kV Transmission Line

Project Infrastructure

- PW75 Alternative Route Segment
- PW75 Established Route (Pointe du Bois G.S. to Lee River DSC)

Alternative Route Segments
Pointe du Bois (PW75) Transmission Project

Draft: For Discussion Purposes Only