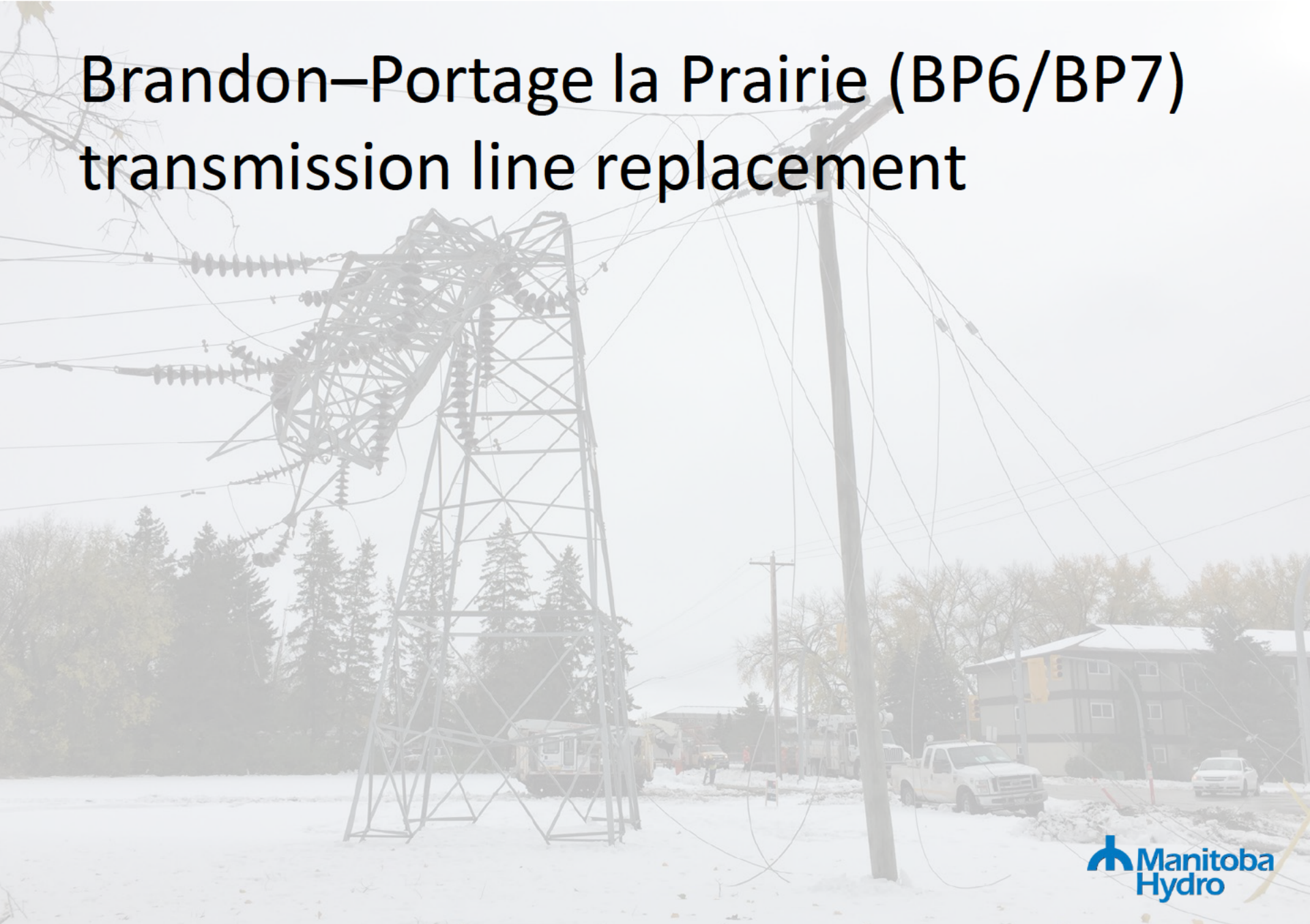


Brandon–Portage la Prairie (BP6/BP7) transmission line replacement



Meeting outline

- Welcome
- Introductions
- Project presentation by Manitoba Hydro
- Discussion of alternative route segments
- Questions and answers
- Next steps and project timeline

Why is this project needed?

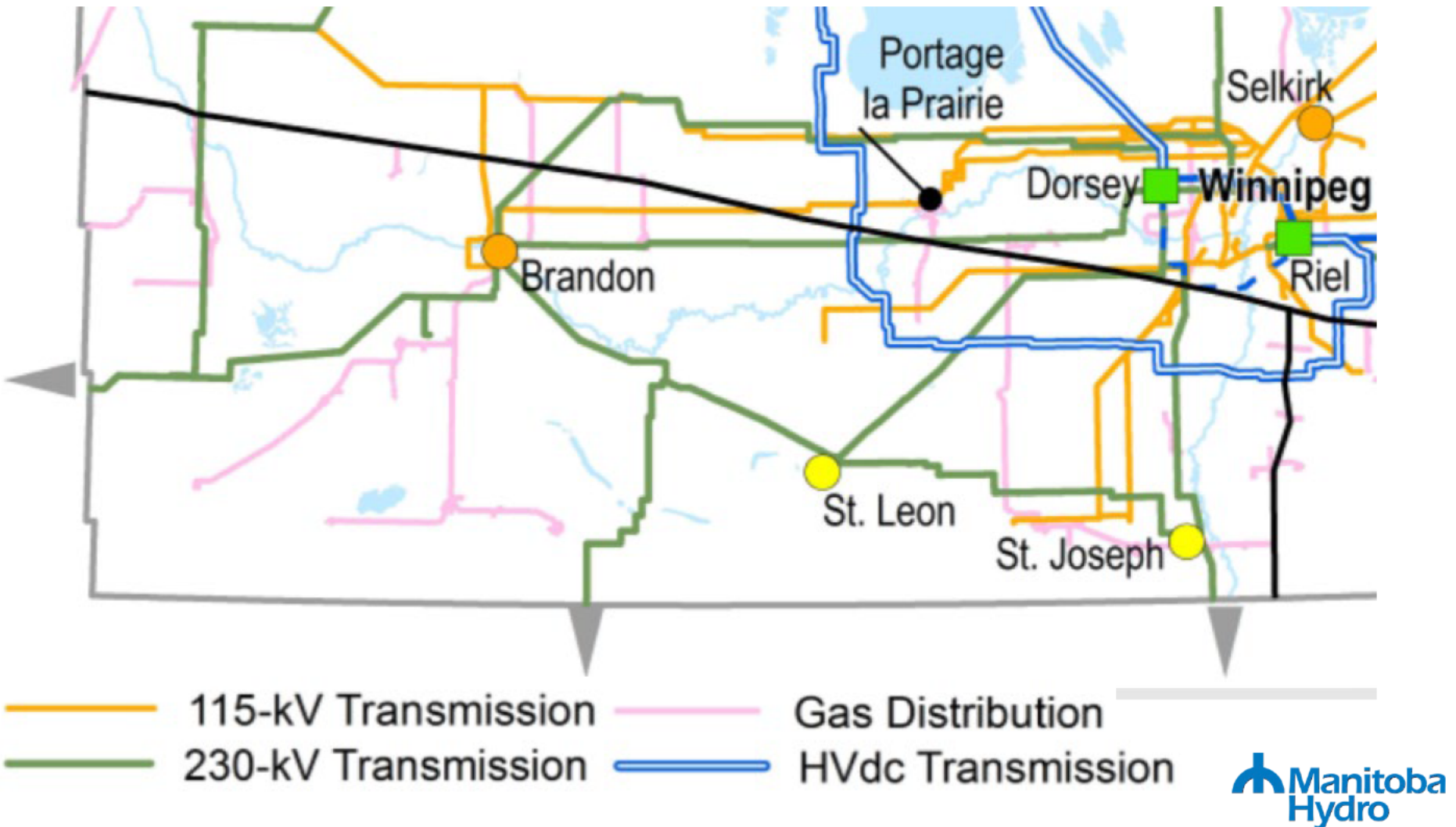
The October 2019 brought freezing rain, wet snow, and high winds that caused extensive damage to our system.

Our crews worked tirelessly and in challenging conditions to restore power to over 184,000 customers.

Damaged tower in Portage la Prairie



System purpose



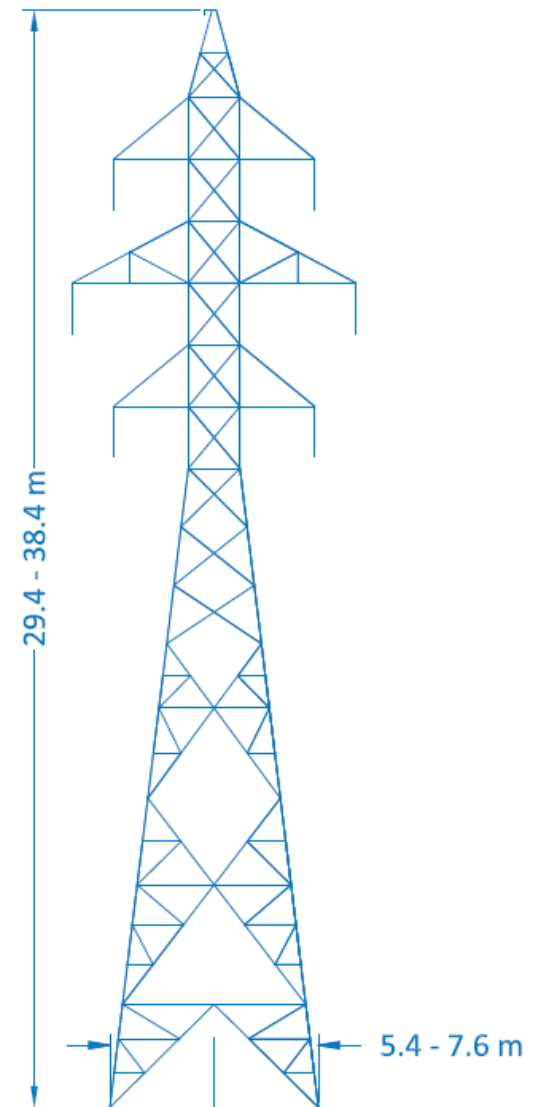
What will it look like?

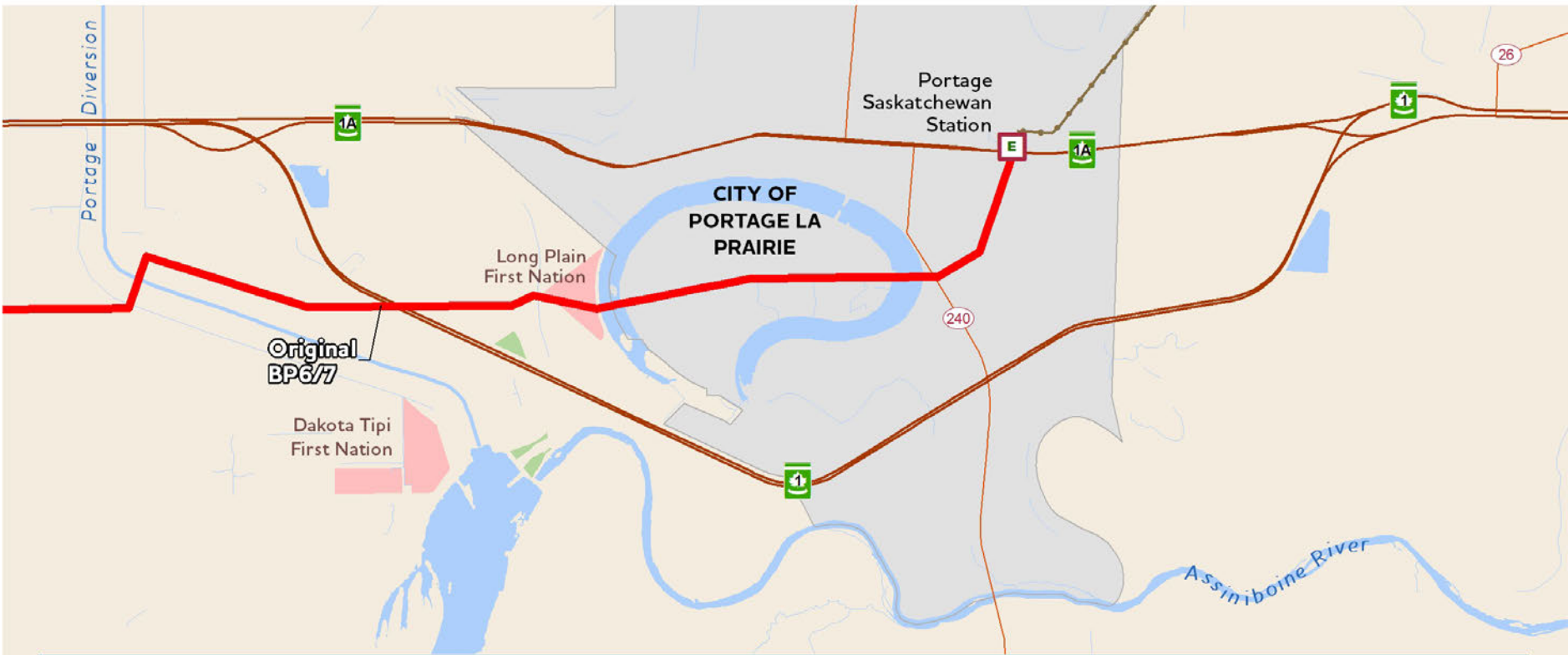
Self supporting steel lattice towers

Two sets of 3 conductors

30-38 m tall

5.5 – 8 m wide at base

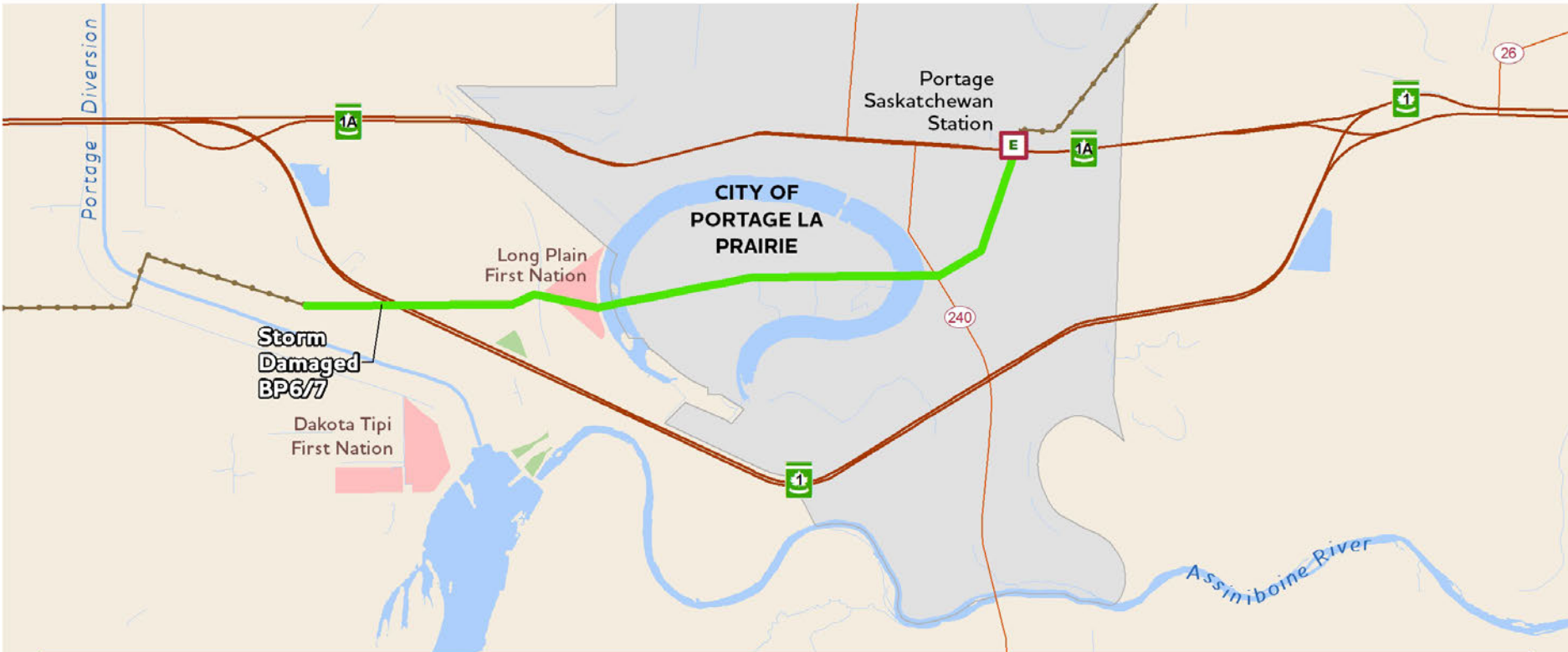




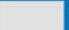


- Original BP6/7
- Transmission Line
- Provincial Highway
- First Nation
- City
- Provincial Park

Metis Harvesting Area covers entire map

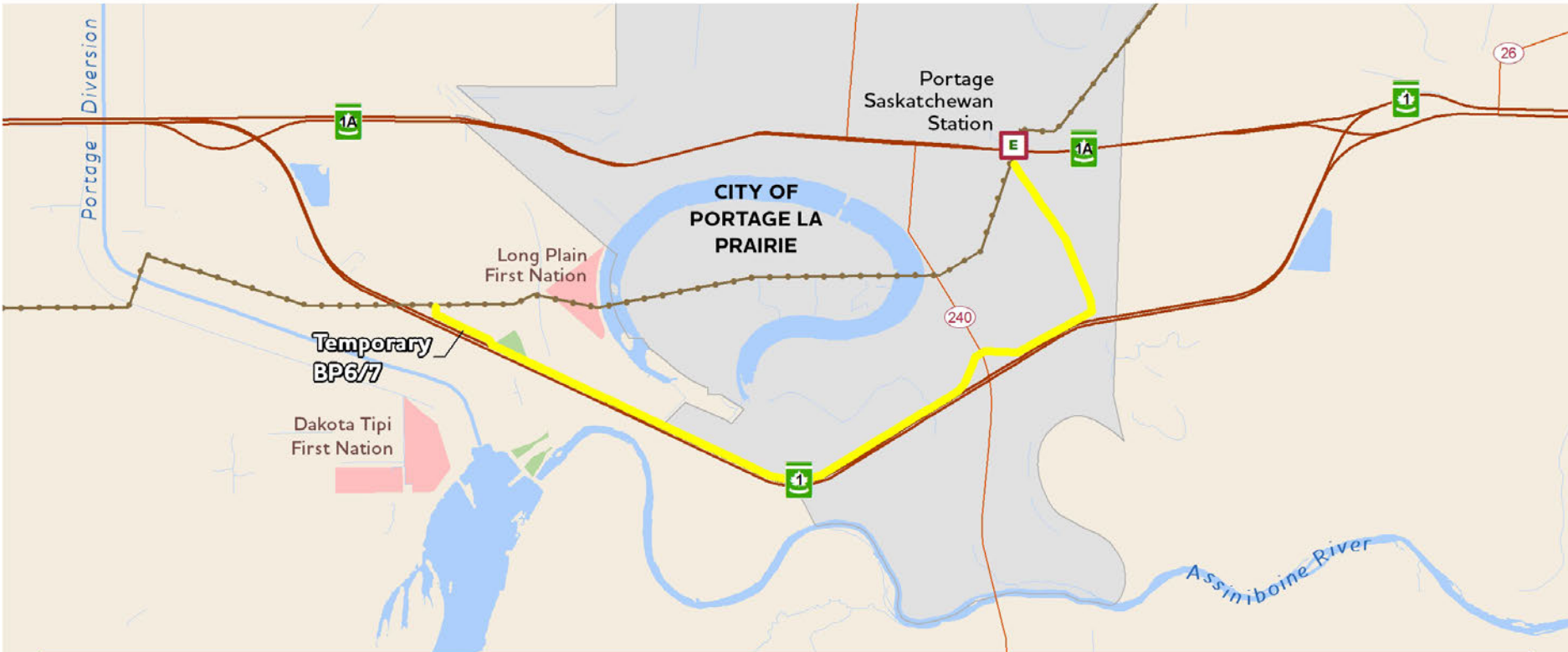
The original BP6/BP7 transmission line was built between 1949 – 1964. The purpose of this 115kV transmission line is to carry power from Portage la Prairie to Brandon.



- | | |
|--------------------------------------------------------------------------------------------------------|-----------------------------------------------------------------------------------------------------|
|  Storm Damaged BP6/7 |  First Nation |
|  Transmission Line |  City |
|  Provincial Highway |  Provincial Park |

Metis Harvesting Area covers entire map

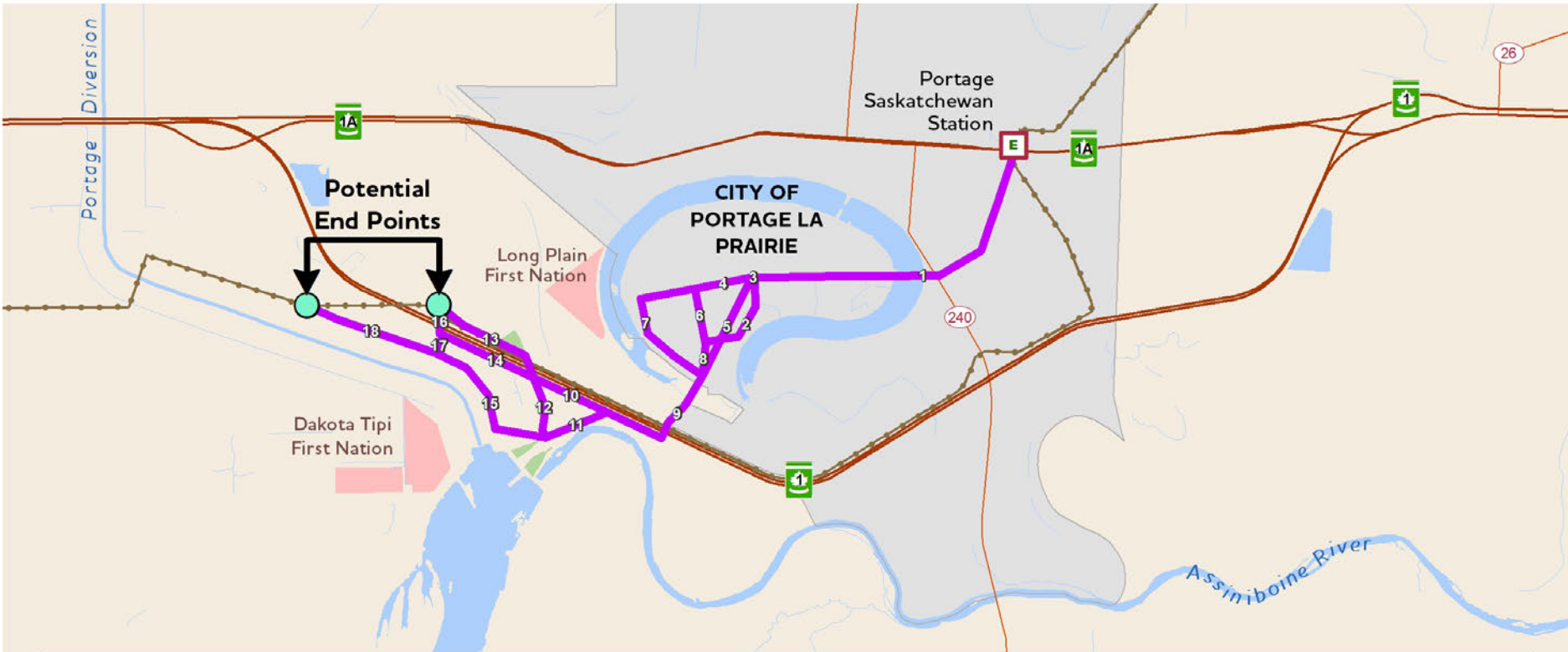
In October 2019, a storm caused extensive damage to Manitoba Hydro's system in the Portage la Prairie area. The damage included over 50 structures of the BP6/BP7 transmission line.



- Temporary BP6/7
- Transmission Line
- Provincial Highway
- First Nation
- City
- Provincial Park

Metis Harvesting Area covers entire map

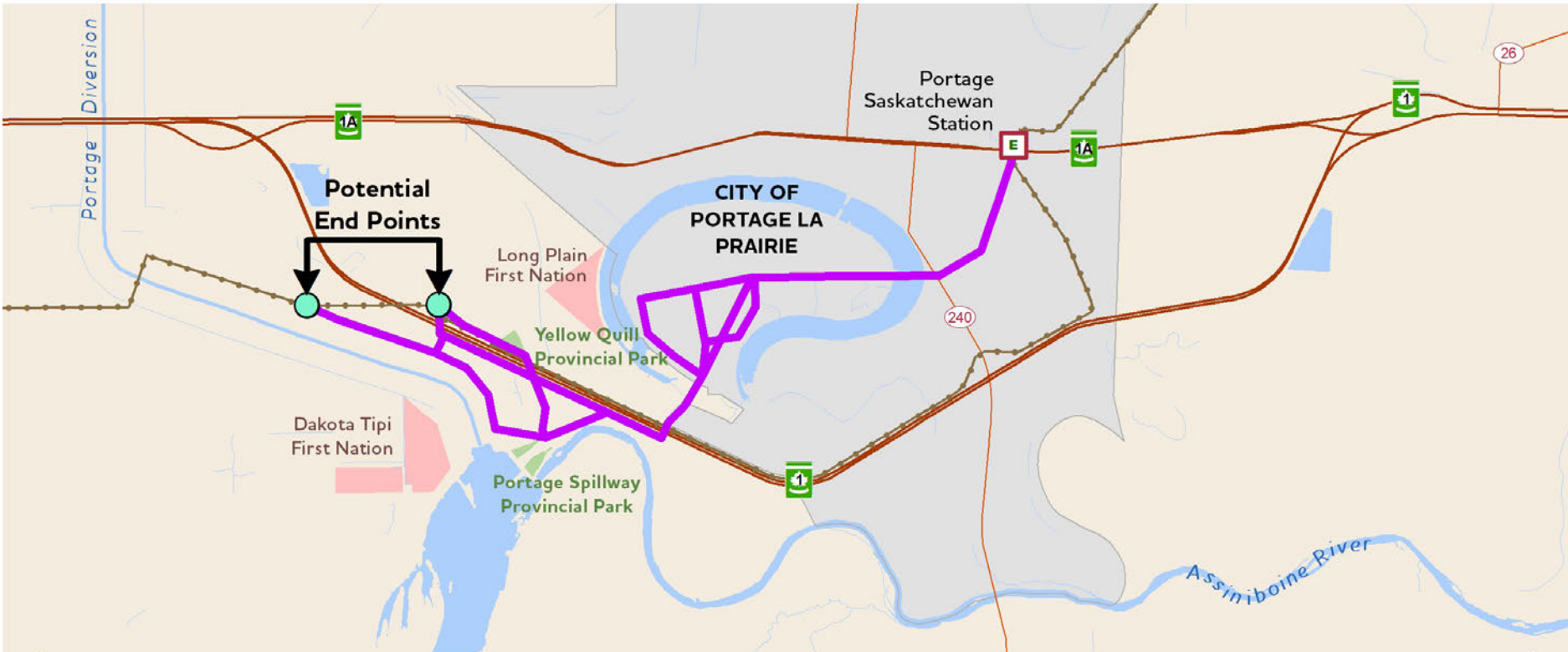
A temporary single-circuit wood pole transmission line along the Trans-Canada Highway was installed to temporarily maintain reliability but we need to plan and rebuild a permanent replacement for the damaged sections.



- | | | | |
|--|---------------------------|--|-----------------|
| | Alternative Route Segment | | First Nation |
| | Transmission Line | | City |
| | Provincial Highway | | Provincial Park |

Metis Harvesting Area covers entire map

Alternative route segments have been constructed to form various route combinations from start to finish. Feedback received through engagement will assist in determining the final preferred route.



- Alternative Route Segment
- Transmission Line
- Provincial Highway
- First Nation
- City
- Provincial Park

Metis Harvesting Area covers entire map

Data gathering, on the ground fieldwork and the input of technical specialists, Indigenous communities, landowners, the public, and interested parties will help inform the final placement of the transmission line route.

Discussion

- General questions and concerns?
- Location specifics - segments
- Resources
 - [online feedback portal](#)
 - [map](#)

How does information inform decisions?



Design



Location



Mitigation

Round 1

- Alternative route segments: fall 2020

Round 2

- Preferred route: winter 2020
-

Anticipated next steps

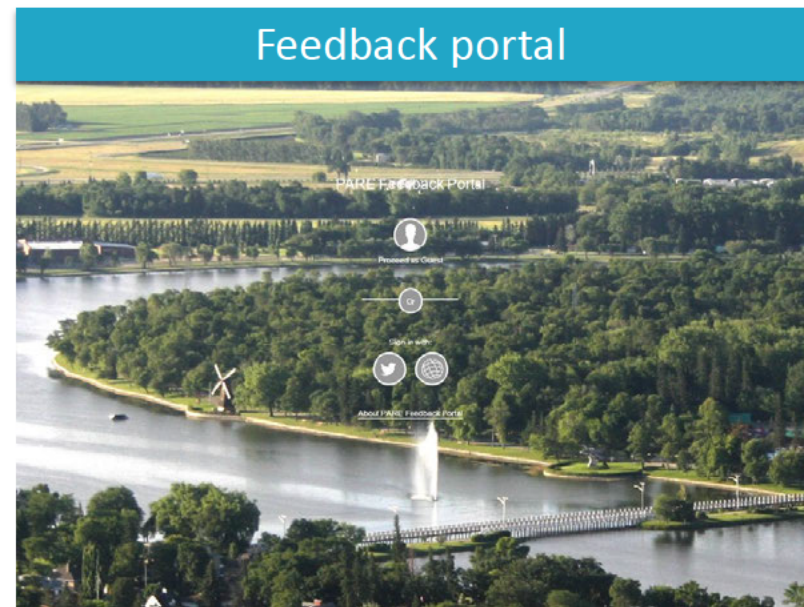
- File environmental assessment report: early 2021
- Regulatory review: 2021
- Construction start, if regulatory review is received 2022

We want to hear from you

Online survey and feedback portal

Tell us what you think about the proposed alternative route segments. The survey closes on November 20.

www.hydro.mb.ca/bp67



Thank you

The project team wants to hear from you.

For more information about BP6/BP7 and to sign up for email notices, please visit

www.hydro.mb.ca/bp67