

Round two – preferred route

*Dorsey to Wash'ake Mayzoon Transmission Line
(D83W)*

Land acknowledgement

I acknowledge that we are within Treaty 1 territory and that the land on which this project is being planned is the traditional territory of Anishinaabe, Cree, Oji-Cree and Dakota Peoples, and the traditional Homeland of the Red River Métis, and within the Recognized Métis Harvesting Area. I also want to acknowledge that others may be joining us from different lands and territories.

Purpose of the session



Share project
information



Answer questions



Listen to feedback

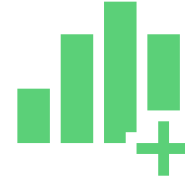
Goals of session



Have a better understanding of the project



Feel that you've had opportunity to share feedback and concerns



Understand how feedback will influence decision making.

Session outline



Project
description



Round one
engagement



How we consider
routing feedback



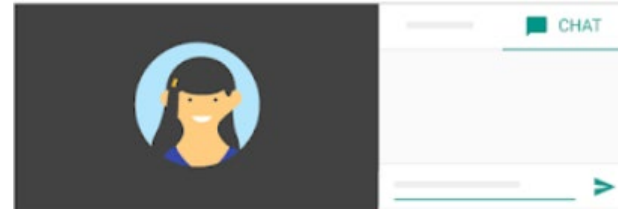
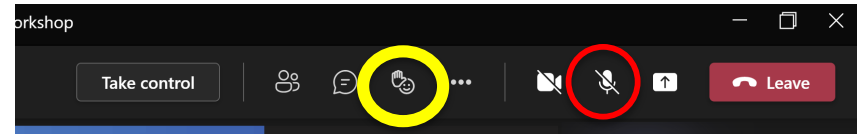
Preferred route



Next steps

During the meeting

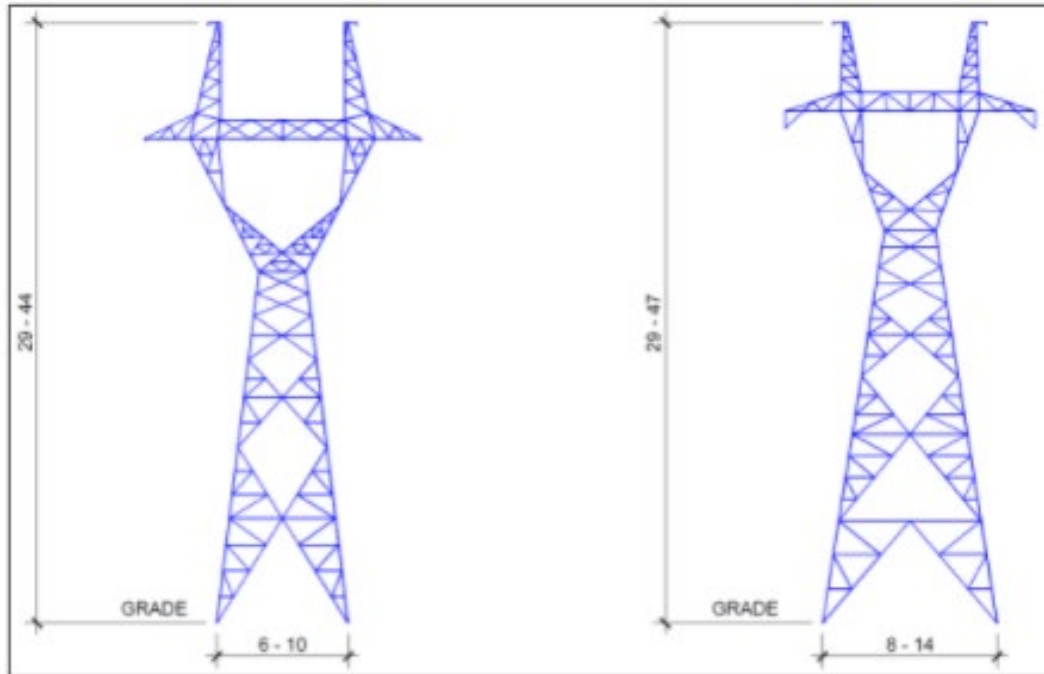
- Please mute your microphone if not speaking
- We encourage you to use the raise hand function or the chat box to ask your questions
- We will make time throughout the presentation and at the end for questions



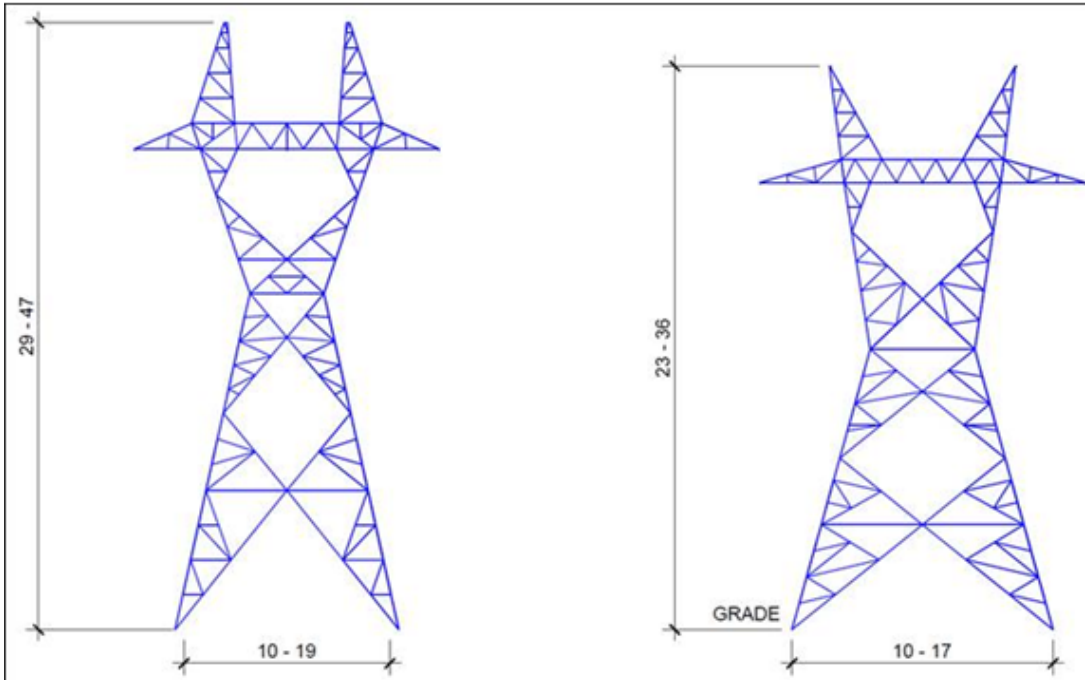
Project description

- New 230-kV transmission line from Dorsey converter station to Wash'ake Mayzoon station
- 230-kV transmission lines are vitally important to the Manitoba electricity grid

Tower design



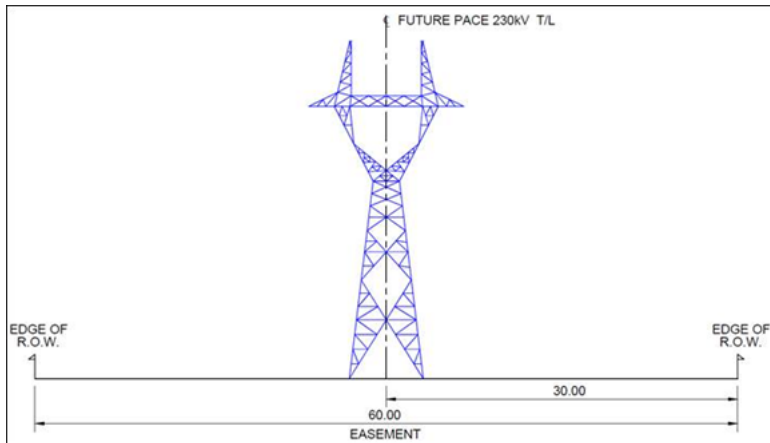
Angle tower



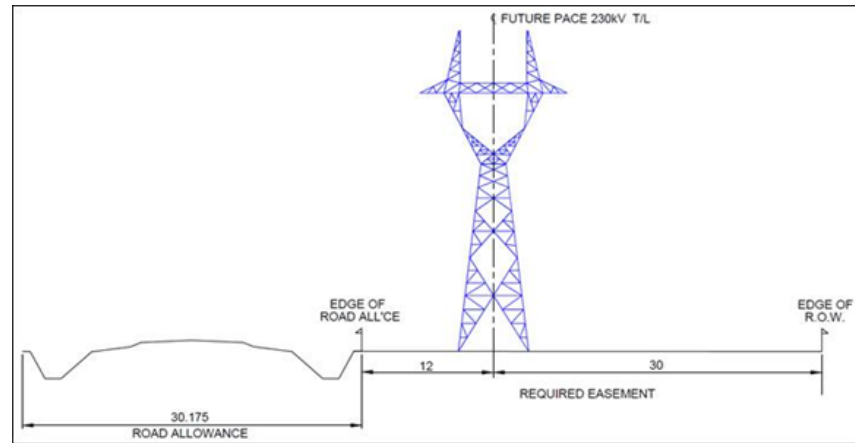
Typical steel lattice
angle / dead-end
towers

ROW width

Typical right-of-way requirements (60m)



Typical right-of-way requirements along road allowance (42 m)



Why is this project needed?



Increase system capacity to meet growing electricity needs



Enhance reliability for customers in Portage la Prairie and surrounding areas

Round one public engagement



Online survey and
mapping feedback portal



9 virtual information
sessions



5 meetings with
interested parties



Attended in person
sessions organized by the
RM of Cartier and RM of
St. François Xavier

What we heard

Agriculture

Routing

Proximity to homes

Health and safety

Culture and heritage

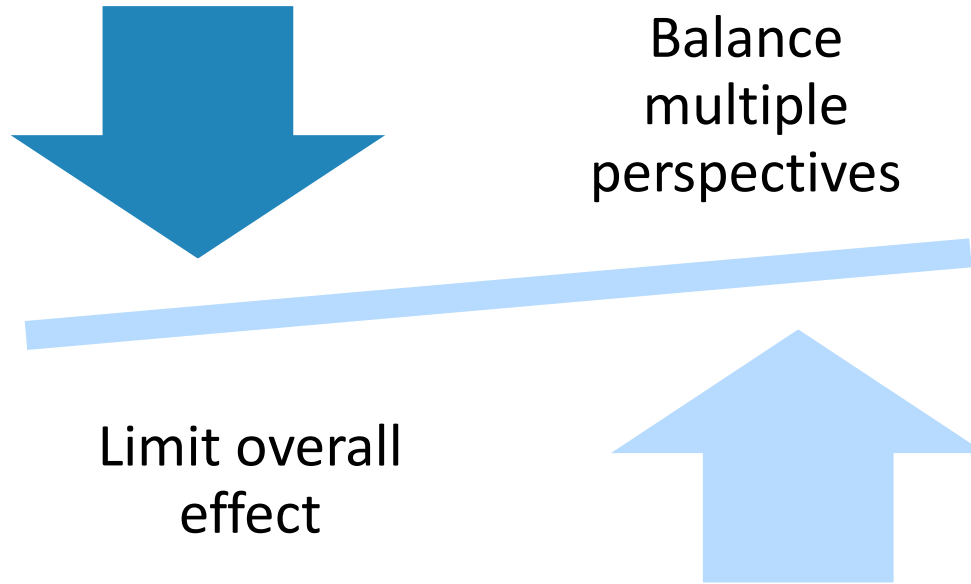
Land and wildlife

How did concerns influence what is assessed for the project?

We assess matters considered important to those affected by a project:

- Agriculture
- Culture and heritage
- Economy
- Human and community health
- Traditional practices
- Vegetation
- Aquatic environment
- Wildlife and wildlife habitat
- Aesthetics

Goals of transmission line routing



Pathway to selecting a route

- Draw study area

Identify
start and
end points
of line

Draw
routes

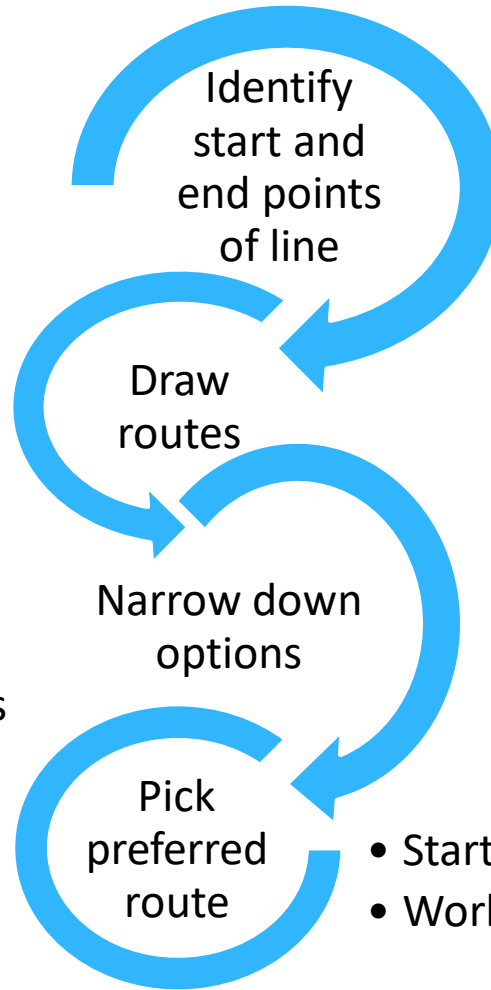
- Start round 1 engagement
- Gather local knowledge and concerns

- Compare and evaluate routes
- Hold project team workshops

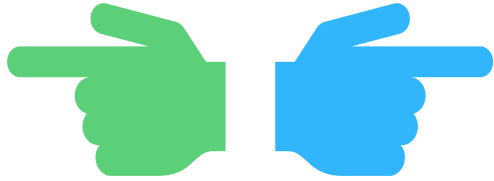
Narrow down
options

Pick
preferred
route

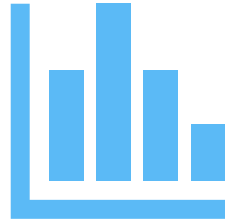
- Start round 2 engagement
- Work to address concerns



How do we consider routing feedback?



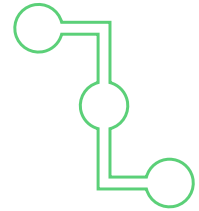
We sometimes hear opposing preferences



Hundreds of routing options are considered by experts with different specialties



The community ranking was determined by representatives from Indigenous communities and rural municipalities



The preferred route is routed in a manner that aims to limit overall effects. Those effects are considered in detail

Why not route along PR 227?

One of the reasons we're building this project is to enhance reliability for customers

- We need separation from existing 230kV or higher lines
 - Important for severe weather
 - New line and D54N line are only 230kV lines in area that will jointly transmit power to serve load in southwest corner of province
 - Potential compliance violations with legislated reliability standards

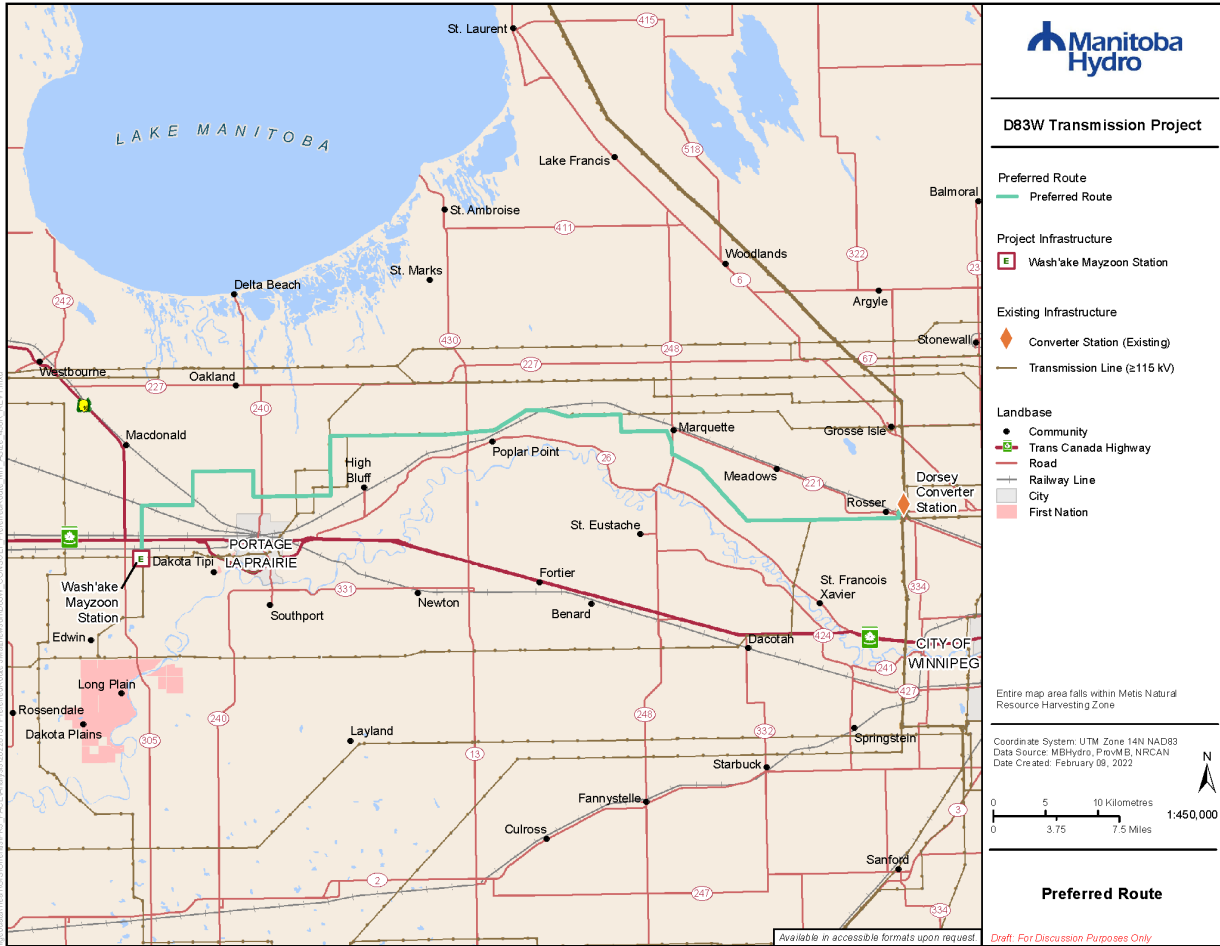
We discussed using the Portage Diversion with Manitoba Infrastructure, and the Crown land area for approximately 6.5km along the diversion south of PR 227 is not wide enough to support a transmission ROW and the potential future widening requirements of the diversion channel.

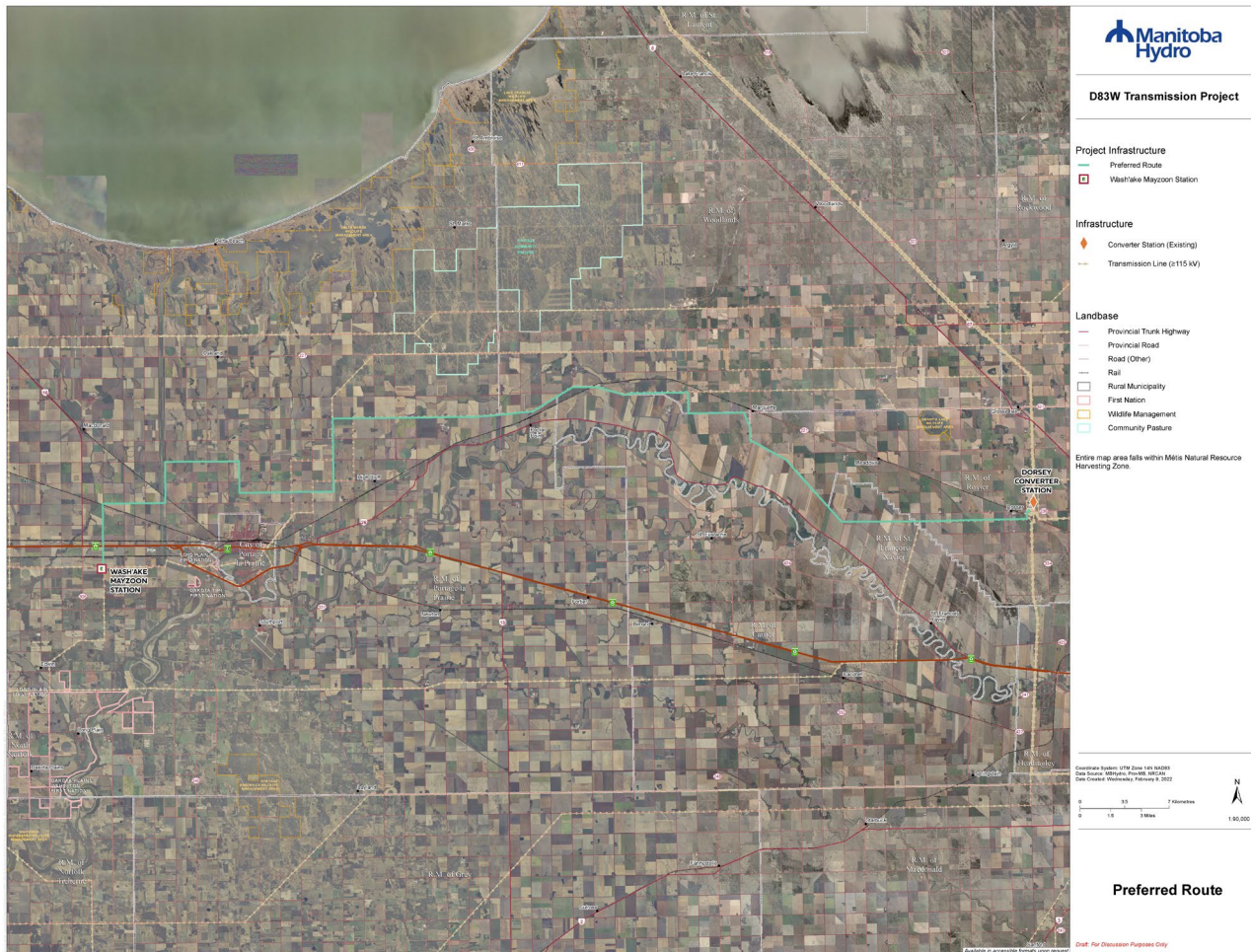


Why not route along PR 227?

We do not own or have easement on any land in the area along PR 227 that is not already occupied with an existing transmission line

A route along PR 227 contributes to approximately 8 km of additional length and higher total costs



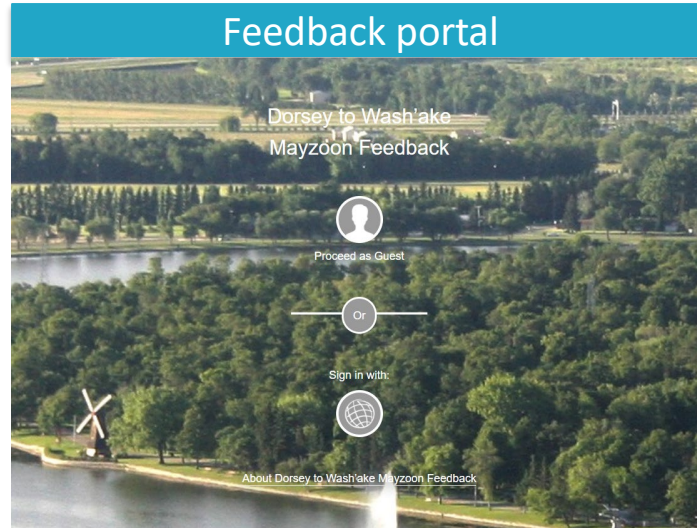


We want to hear from you

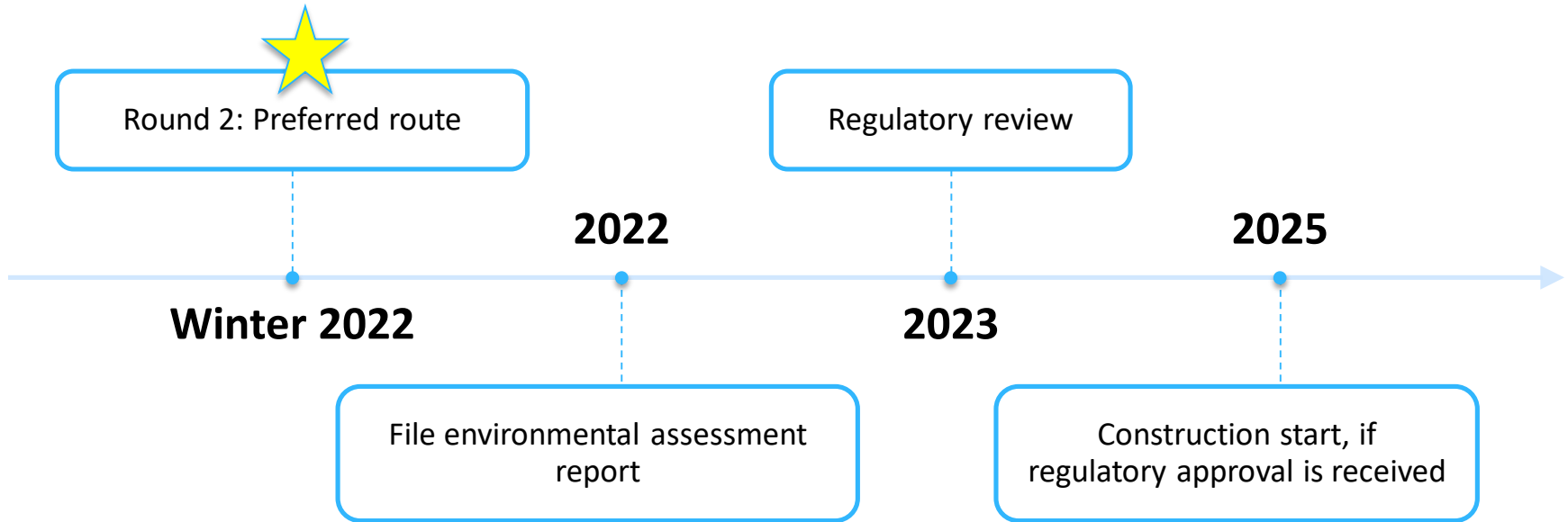
Online survey and feedback portal

Tell us what you think about the preferred route. The survey opens on March 1 and closes on March 25.

www.hydro.mb.ca/pace



Schedule



Discussion

- General questions and concerns?
- Location specific concerns?
- Resources
 - [online feedback portal](#)
 - [map](#)

Thank you

The project team wants to hear from you.

For more information about D83W and to sign up for email notices, please visit

www.hydro.mb.ca/pace

Available in accessible formats upon request