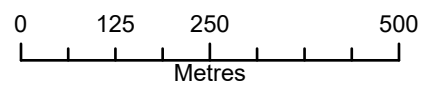


Coordinate System: UTM Zone 14N NAD83
 Data Source: MB Hydro, ProvMB, NRCAN
 Date Created: February 20, 2024
 Version: Draft



1:10,000

Land Base

- Highway
- Major Road
- Local Road
- Railway (Operational)
- First Nation
- Parcel Fabric
- Rural Municipality

Existing Infrastructure

- Transmission Line

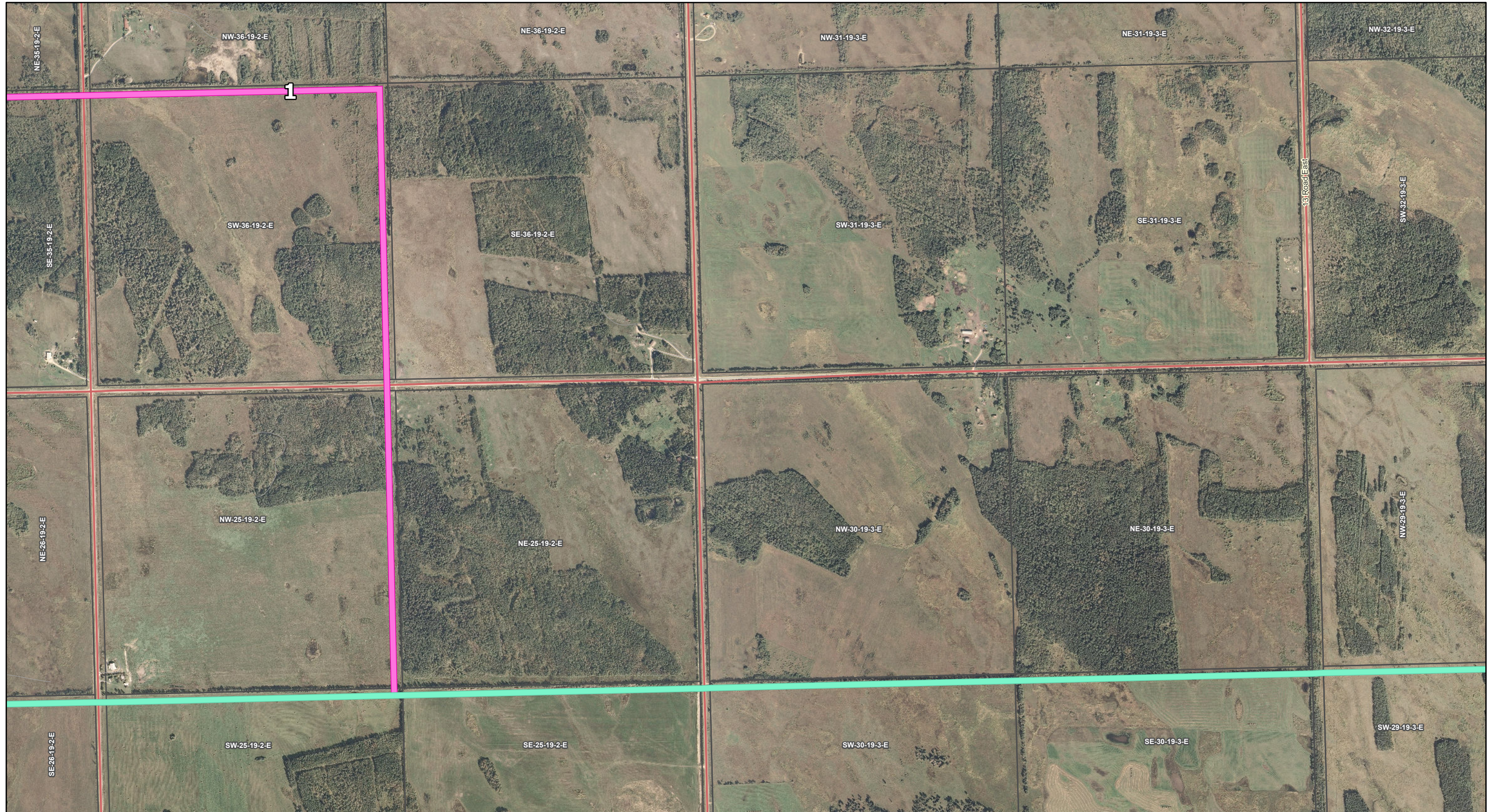
Project Infrastructure

- Alternative Segment
- Preferred Route

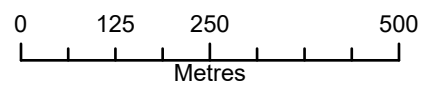
Treaty 1 territory and the Métis harvesting area covers the entire map.

**Silver to Rosser
 Tap Transmission Project
 Alternative Route Segments**

Draft: For Discussion Purposes Only



Coordinate System: UTM Zone 14N NAD83
 Data Source: MB Hydro, ProvMB, NRCAN
 Date Created: February 20, 2024
 Version: Draft



1:10,000

Land Base

- Highway
- Major Road
- Local Road
- Railway (Operational)
- First Nation
- Parcel Fabric
- Rural Municipality

Existing Infrastructure

- Transmission Line

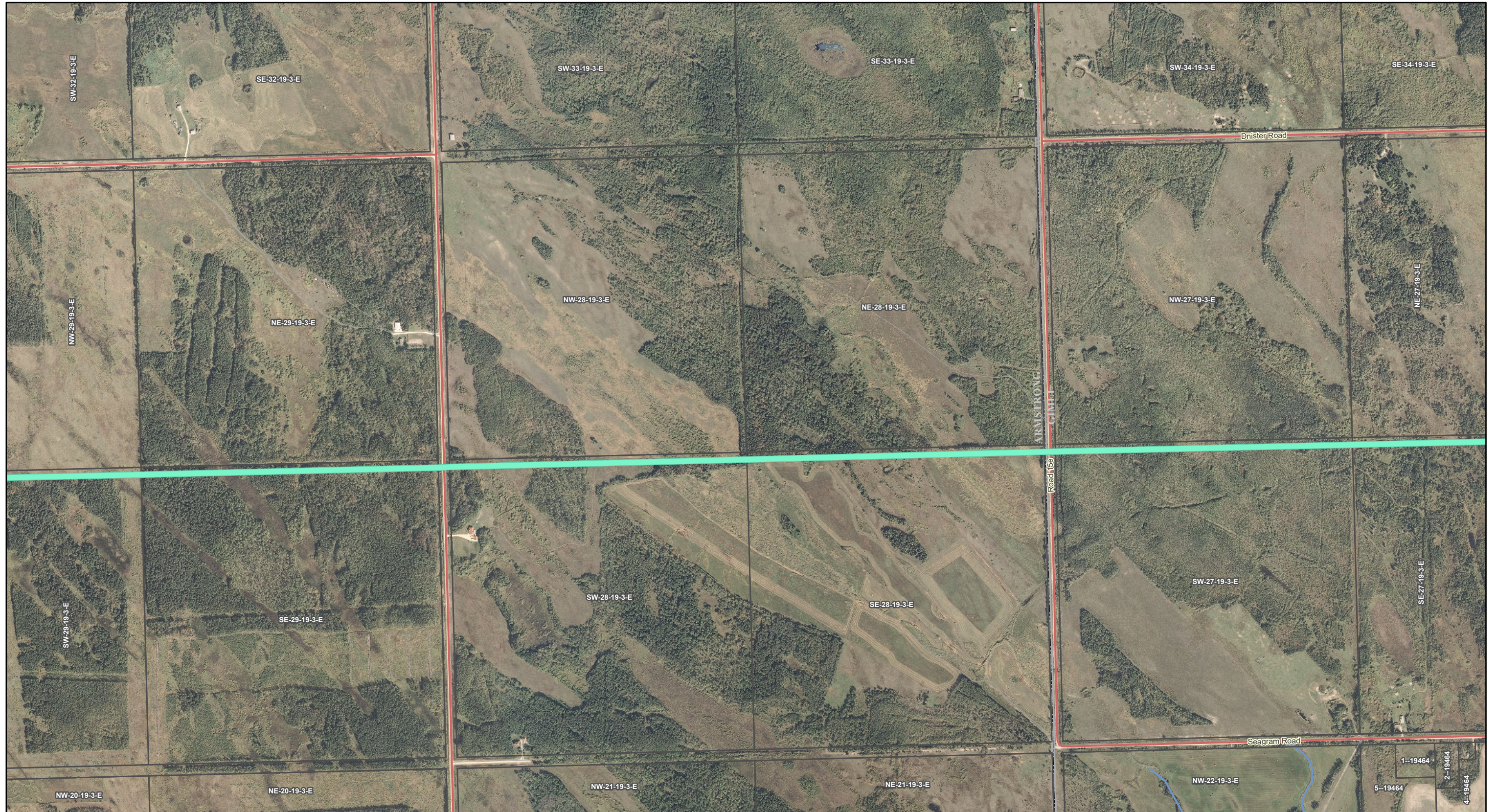
Project Infrastructure

- Alternative Segment
- Preferred Route

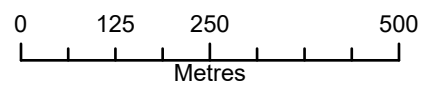
Treaty 1 territory and the Métis harvesting area covers the entire map.

**Silver to Rosser
 Tap Transmission Project
 Alternative Route Segments**

Draft: For Discussion Purposes Only



Coordinate System: UTM Zone 14N NAD83
 Data Source: MB Hydro, ProvMB, NRCAN
 Date Created: February 20, 2024
 Version: Draft



1:10,000

Land Base

- Highway
- Major Road
- Local Road
- Railway (Operational)
- First Nation
- Parcel Fabric
- Rural Municipality

Existing Infrastructure

- Transmission Line

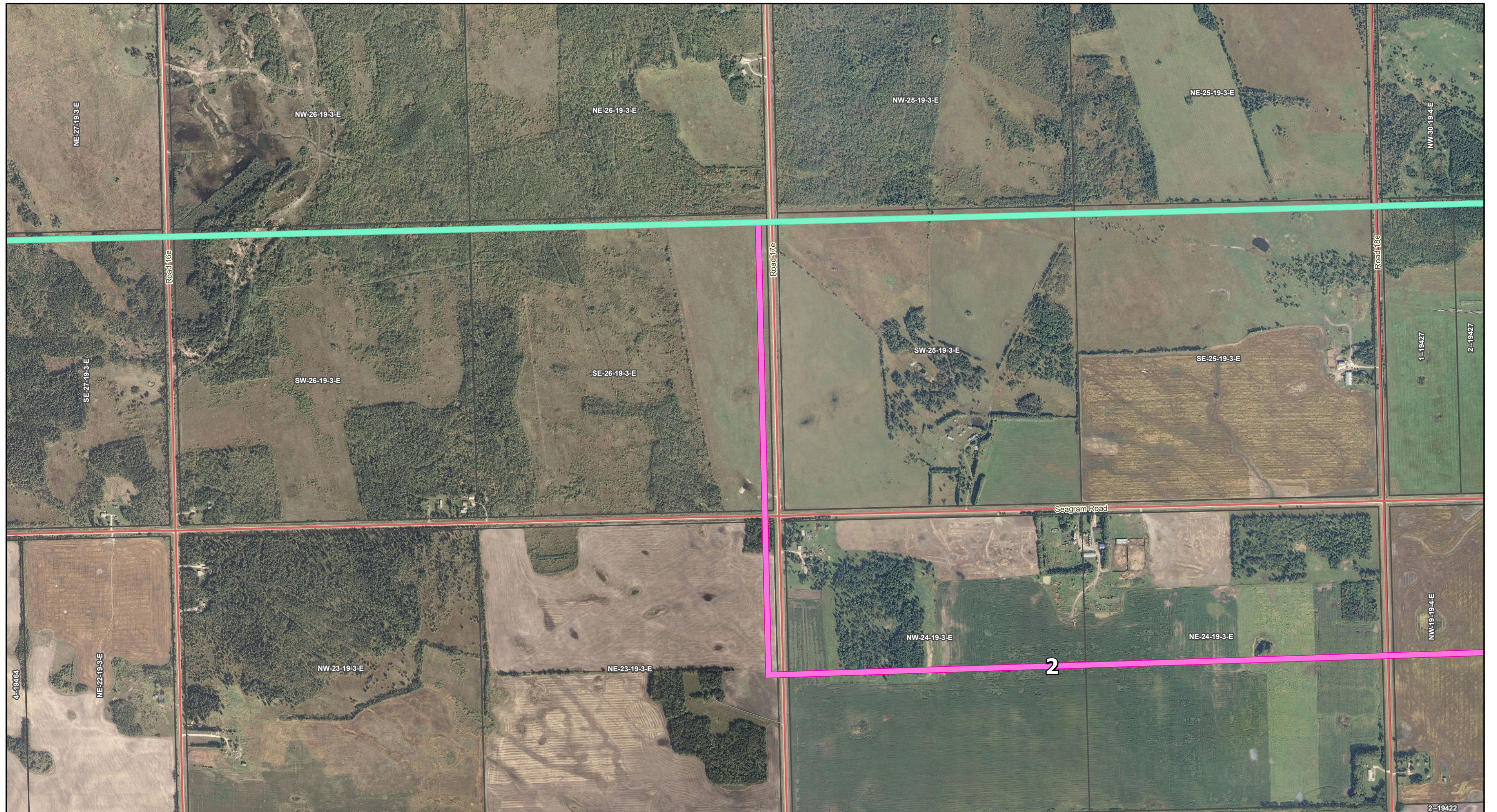
Project Infrastructure

- Preferred Route

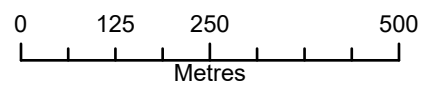
Treaty 1 territory and the Métis harvesting area covers the entire map.

**Silver to Rosser
 Tap Transmission Project
 Alternative Route Segments**

Draft: For Discussion Purposes Only



Coordinate System: UTM Zone 14N NAD83
 Data Source: MB Hydro, ProvMB, NRCAN
 Date Created: February 20, 2024
 Version: Draft



1:10,000

Land Base

- Highway
- Major Road
- Local Road
- Railway (Operational)
- First Nation
- Parcel Fabric
- Rural Municipality

Existing Infrastructure

- Transmission Line

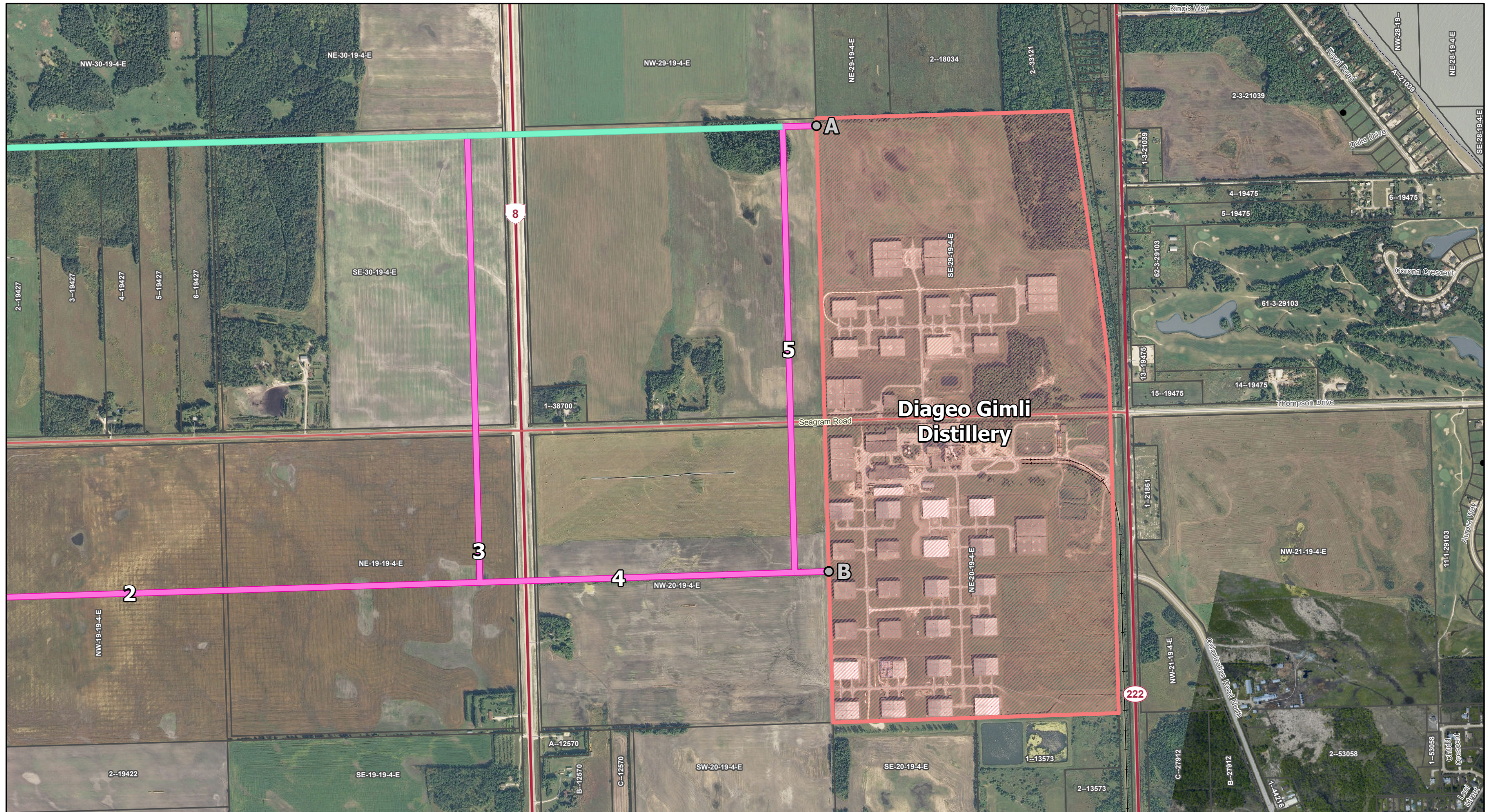
Project Infrastructure

- Alternative Segment
- Preferred Route

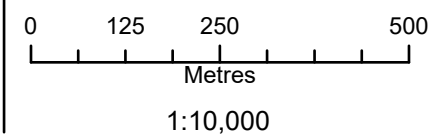
Treaty 1 territory and the Métis harvesting area covers the entire map.

**Silver to Rosser
 Tap Transmission Project
 Alternative Route Segments**

Draft: For Discussion Purposes Only



Coordinate System: UTM Zone 14N NAD83
 Data Source: MB Hydro, ProvMB, NRCAN
 Date Created: February 20, 2024
 Version: Draft



- Land Base**
- Highway
 - Major Road
 - Local Road
 - Railway (Operational)
 - First Nation
 - Parcel Fabric
 - Rural Municipality

- Existing Infrastructure**
- Transmission Line

- Project Infrastructure**
- Potential Entrance Site
 - Alternative Segment
 - Preferred Route
 - Diageo Gimli Distillery

Treaty 1 territory and the Métis harvesting area covers the entire map.

Silver to Rosser Tap Transmission Project Alternative Route Segments

Draft: For Discussion Purposes Only