

St. Vital Transmission Complex Project (G79L)

Construction Access Management Plan Mapbook

August 2021

Final 1.01

Prepared by:

Licensing and Environmental Assessment Department

Manitoba Hydro

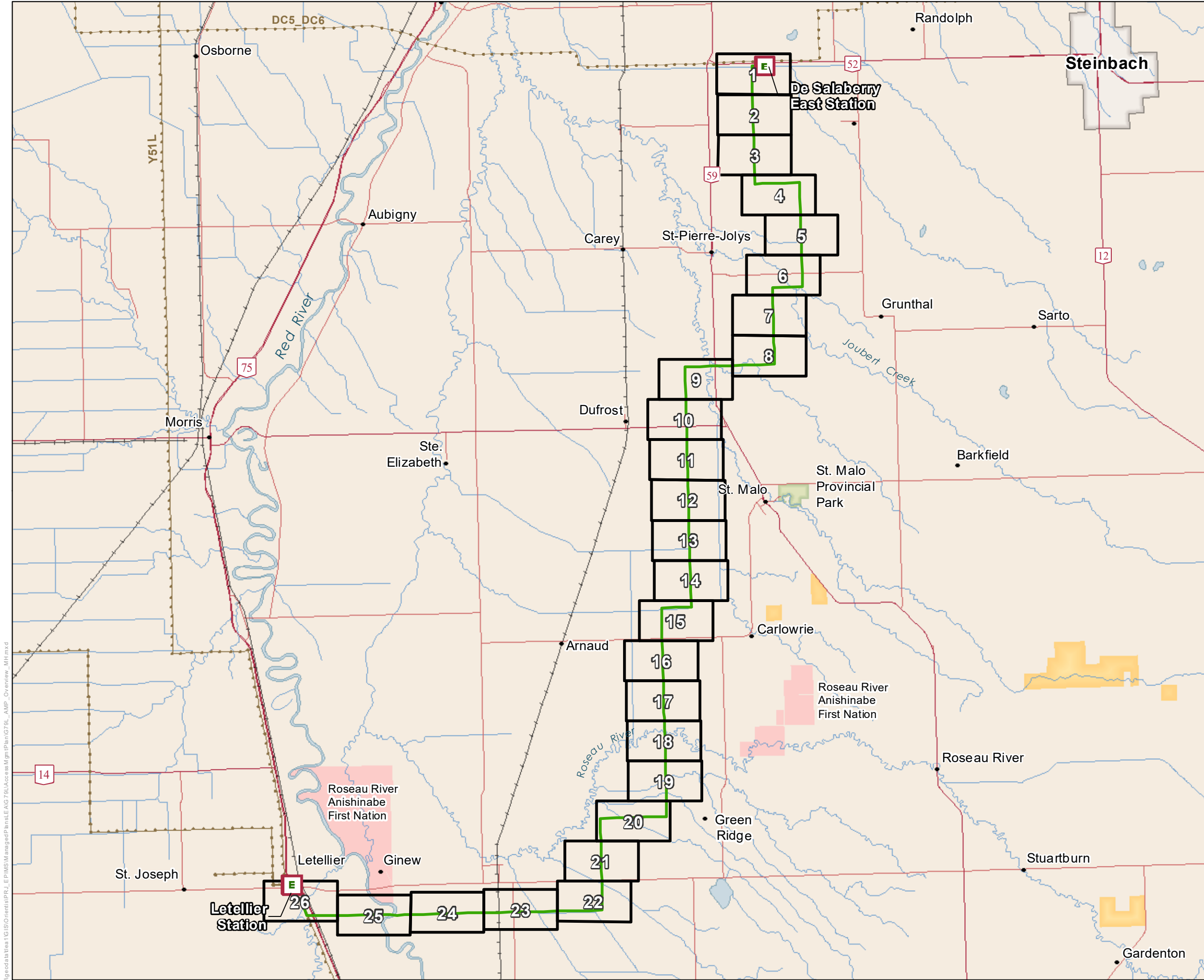


Document Owner:
Licensing and Environmental Assessment Department
Transmission Planning and Design Division
Transmission Business Unit
Manitoba Hydro

Version 1.01



List of Revisions - St. Vital Transmission Complex Access Management Plan Mapbook

Number	Nature of Revision	Page/Map #	Revised By	Date
Draft	Access routes, fences and approaches created	Maps 1-26	Manitoba Hydro	20210106
Draft	Updated access routes, approaches and underground infrastructure according to reroute (Map 19-22). Updated map grids.	Maps 1-26	Manitoba Hydro	20210202
Draft	Updated access routes based on re-route at STR 40-44.	Map 6	Manitoba Hydro	20210302
Draft	Retired AMP 19. Added new AMP 19 and AMP 19A with proposed approaches (Map 4). Removed AMP 52 proposed approach (Map 8).	Map 4, 8	Manitoba Hydro	20210323
Draft	Added AMP 121.	Map 18	Manitoba Hydro	20210329
Draft	AMP 19 moved 100 meters to west of FPR/quarter section line. Changed "Underground infrastructure locations are approximate and incomplete. Contractors are responsible for any damage to underground infrastructure". Added in oil pipeline as "Underground Infrastructure". Added underground electrical distribution lines to underground infrastructure.	Maps 1-26	Manitoba Hydro	20210422
Draft	Added AMP 46 with approach (Map 7). AMP 47 moved 20 meters to north (Map 7). Retired AMP 50A (Map 7). Changed AMP 52 type to "Field Access" (Map 8). Added proposed approach at AMP 77 (Map 10). Updated proposed access type – permanent or temporary.	Map 1-26	Manitoba Hydro	20210426
Draft	Updated AMP 15 permanent approach to temporary. Moved AMP 46 controlled access point to the east. Updated AMP 55 approach to temporary.	Map 3, 7, 8	Manitoba Hydro	20210723
Draft	Added note in maps – "Gates must be closed after entry or exit"	Map 4, 5, 6, 7, 8 and 9	Manitoba Hydro	20210727
1.00	Updated mapbooks "Draft" to "Final 1.00"	Map 1-26	Manitoba Hydro	20210803
1.01	Retired AMP 48. Added new AMP 48A with fence (Map 7). Updated underground infrastructure lines near AMP 137 to restricted (Map 20). Added note for rider poles and no access to STR 137 (Map 20). Updated AMP 137 to AMP RP and added additional restricted access along FPR near AMP RP (Map 20). Added note at Red River crossing (Map 25). Added note for underground infrastructure at Str 39-40 (Map 6), Str 169-170 (Map 23) and Str 201-202 (Map 26). Updated underground infrastructure at Str 151-152 to restricted (Map 22).	Map 6, 7, 20, 22, 23, 25 and 26	Manitoba Hydro	20210827



St. Vital Transmission Complex



Project Infrastructure

-  Electrical Station
-  Final Preferred Route


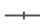

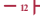





Map Tile Index - 1:10,000

-  Map Series Tile

Infrastructure

-  Existing 500kV Transmission Line
-  Existing 230kV Transmission Line

Landbase

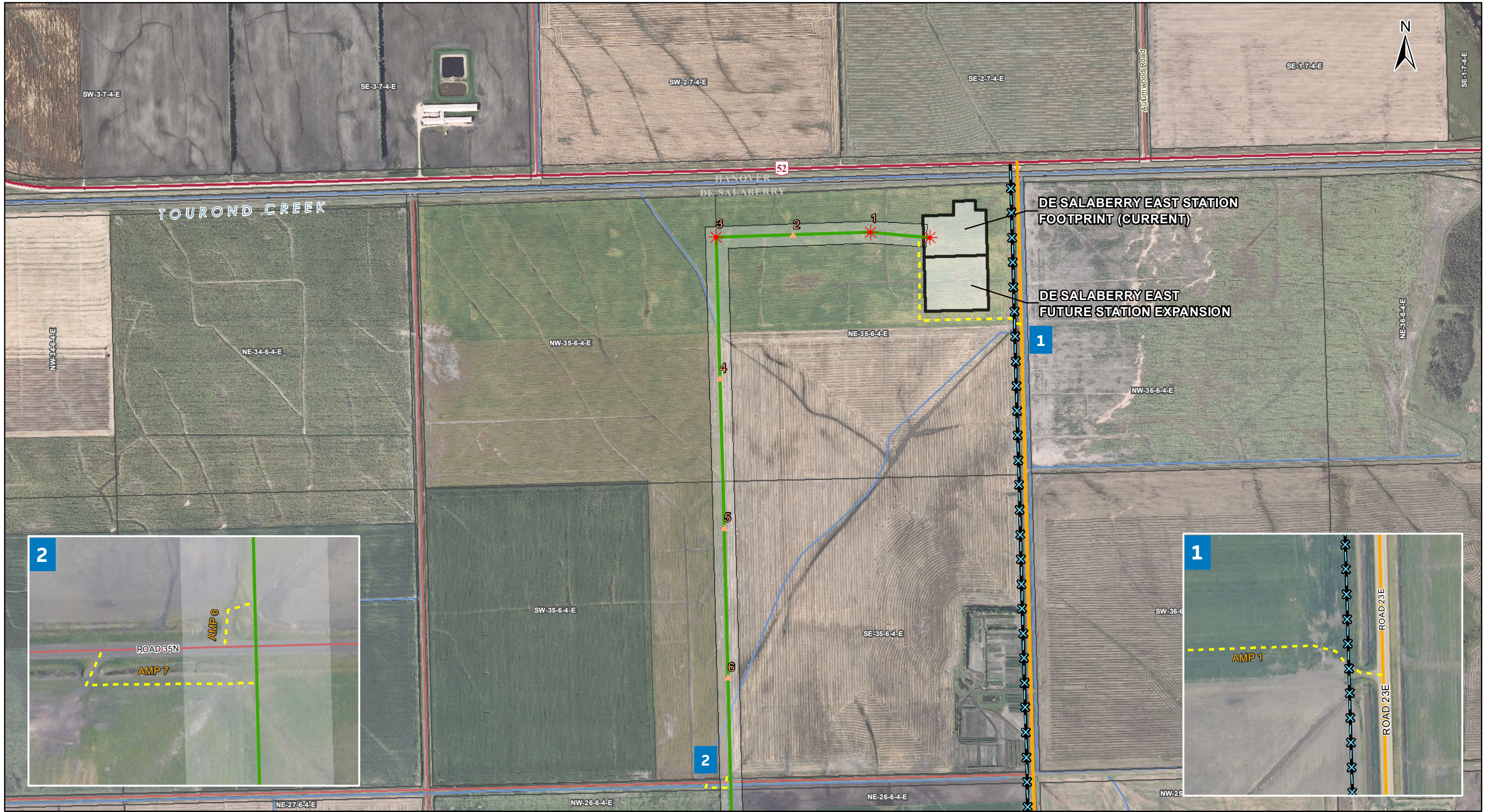
-  Community
-  Railway
-  Trans Canada
-  Provincial Highway
-  Provincial Road
-  City
-  First Nation Lands
-  Wildlife Management Area
-  Provincial Park

Coordinate System: UTM Zone 14N NAD83
Data Source: MBHydro, ProvMB, NRCAN
Date Created: August 26, 2021



1:200,000

Index of Map Series Access Management Plan



Coordinate System: UTM Zone 14N NAD83
Data Source: MB Hydro, ProvMB, NRCAN
Date Created: August 27, 2021
Version: Final 1.01

0 125 250 500
Metres
1:10,000

- Land Base**
- Transmission Line
 - Highway
 - Major Road
 - Local Road
 - Railway (Operational)
 - Railway (Discontinued)
 - First Nation
 - Provincial Forest
 - Parcel Fabric
 - Rural Municipality

- Project Infrastructure**
- Tower Location
 - Angle Tower Location
 - Final Preferred Route
 - Right of Way
 - De Salaberry East Station/Expansion

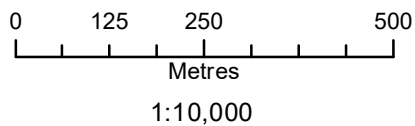
- Points of Access**
- Existing Gravel Road
 - Existing Gravel/Dirt Road
 - Field Access
 - New Trail
 - Restricted Access
 - Restricted - Livestock Operation
 - Underground Infrastructure
- * Underground infrastructure locations are approximate and incomplete. Contractors are responsible for any damage to underground infrastructure

- Approaches/Fences**
- Fence
 - Proposed Permanent Approach
 - Proposed Temporary Approach
- * Some road names have not been verified, use with discretion

St. Vital Transmission Complex Construction Access Opportunities



Coordinate System: UTM Zone 14N NAD83
Data Source: MB Hydro, ProvMB, NRCAN
Date Created: August 27, 2021
Version: Final 1.01



Land Base

- Transmission Line
- Highway
- Major Road
- Local Road
- Railway (Operational)
- Railway (Discontinued)
- First Nation
- Provincial Forest
- Parcel Fabric
- Rural Municipality

Project Infrastructure

- Tower Location
- Angle Tower Location
- Final Preferred Route
- Right of Way

Points of Access

- Existing Gravel Road
 - Existing Gravel/Dirt Road
 - Field Access
 - New Trail
 - Restricted Access
 - Restricted - Livestock Operation
 - Underground Infrastructure
- * Underground infrastructure locations are approximate and incomplete. Contractors are responsible for any damage to underground infrastructure

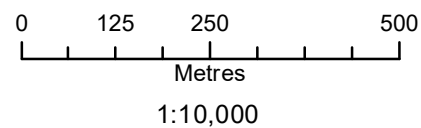
Approaches/Fences

- Fence
 - Proposed Permanent Approach
 - Proposed Temporary Approach
- * Some road names have not been verified, use with discretion

**St. Vital Transmission Complex
Construction Access Opportunities**



Coordinate System: UTM Zone 14N NAD83
Data Source: MB Hydro, ProvMB, NRCAN
Date Created: August 27, 2021
Version: Final 1.01



Land Base

- Transmission Line
- Highway
- Major Road
- Local Road
- Railway (Operational)
- Railway (Discontinued)
- First Nation
- Provincial Forest
- Parcel Fabric
- Rural Municipality

Project Infrastructure

- ▲ Tower Location
- ★ Angle Tower Location
- Final Preferred Route
- Right of Way

Points of Access

- Existing Gravel Road
 - Existing Gravel/Dirt Road
 - Field Access
 - New Trail
 - ✗ Restricted Access
 - ✗ Restricted - Livestock Operation
 - ✗ Underground Infrastructure
- * Underground infrastructure locations are approximate and incomplete. Contractors are responsible for any damage to underground infrastructure

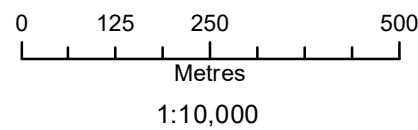
Approaches/Fences

- ⓔ Fence
 - Ⓢ Proposed Permanent Approach
 - Ⓢ Proposed Temporary Approach
- * Some road names have not been verified, use with discretion

St. Vital Transmission Complex Construction Access Opportunities



Coordinate System: UTM Zone 14N NAD83
Data Source: MB Hydro, ProvMB, NRCAN
Date Created: August 27, 2021
Version: Final 1.01



Land Base
● Transmission Line
— Highway
— Major Road
— Local Road
— Railway (Operational)
— Railway (Discontinued)
— First Nation
— Provincial Forest
— Parcel Fabric
— Rural Municipality

Project Infrastructure
▲ Tower Location
★ Angle Tower Location
— Final Preferred Route
— Right of Way

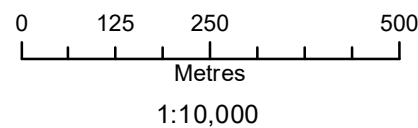
Points of Access
— Existing Gravel Road
— Existing Gravel/Dirt Road
— Field Access
— New Trail
✗ Restricted Access
✗ Restricted - Livestock Operation
✗ Underground Infrastructure
* Underground infrastructure locations are approximate and incomplete. Contractors are responsible for any damage to underground infrastructure

Approaches/Fences
Ⓡ Fence
Ⓡ Proposed Permanent Approach
Ⓡ Proposed Temporary Approach
* Some road names have not been verified, use with discretion

**St. Vital Transmission Complex
Construction Access Opportunities**



Coordinate System: UTM Zone 14N NAD83
Data Source: MB Hydro, ProvMB, NRCAN
Date Created: August 27, 2021
Version: Final 1.01



Land Base

- Transmission Line
- Highway
- Major Road
- Local Road
- Railway (Operational)
- Railway (Discontinued)
- First Nation
- Provincial Forest
- Parcel Fabric
- Rural Municipality

Project Infrastructure

- ▲ Tower Location
- ★ Angle Tower Location
- Final Preferred Route
- Right of Way

Points of Access

- Existing Gravel Road
- Existing Gravel/Dirt Road
- Field Access
- New Trail
- ✗ Restricted Access
- ✗ Restricted - Livestock Operation
- ✗ Underground Infrastructure

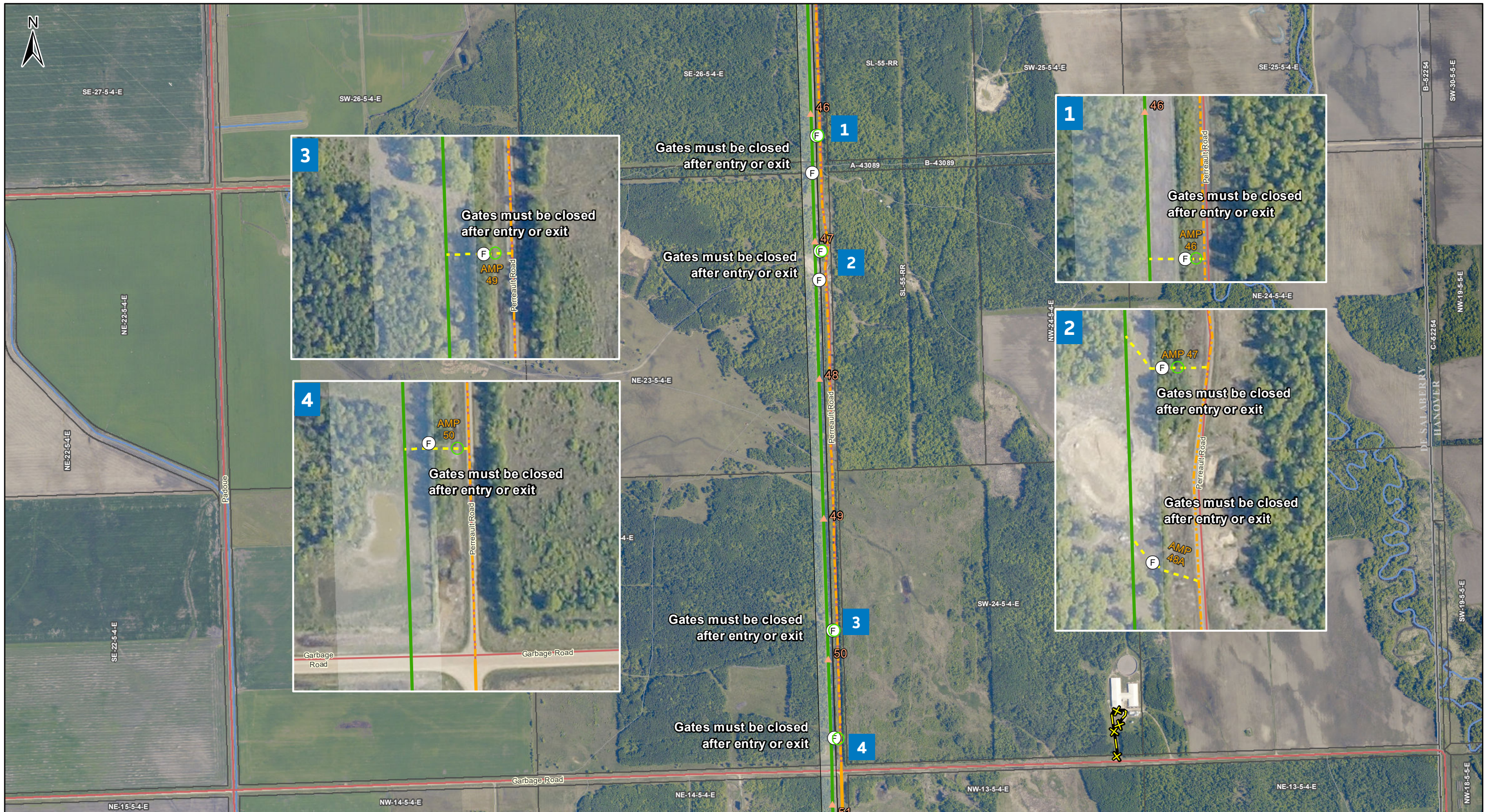
* Underground infrastructure locations are approximate and incomplete. Contractors are responsible for any damage to underground infrastructure

Approaches/Fences

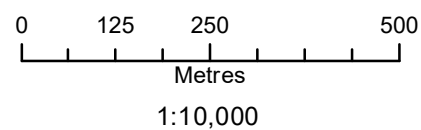
- Ⓢ Fence
- Ⓢ Proposed Permanent Approach
- Ⓢ Proposed Temporary Approach

* Some road names have not been verified, use with discretion

St. Vital Transmission Complex Construction Access Opportunities



Coordinate System: UTM Zone 14N NAD83
Data Source: MB Hydro, ProvMB, NRCAN
Date Created: August 27, 2021
Version: Final 1.01



Land Base

- Transmission Line
- Highway
- Major Road
- Local Road
- Railway (Operational)
- Railway (Discontinued)
- First Nation
- Provincial Forest
- Parcel Fabric
- Rural Municipality

Project Infrastructure

- Tower Location
- Angle Tower Location
- Final Preferred Route
- Right of Way

Points of Access

- Existing Gravel Road
- Existing Gravel/Dirt Road
- Field Access
- New Trail
- Restricted Access
- Restricted - Livestock Operation
- Underground Infrastructure

* Underground infrastructure locations are approximate and incomplete. Contractors are responsible for any damage to underground infrastructure

Approaches/Fences

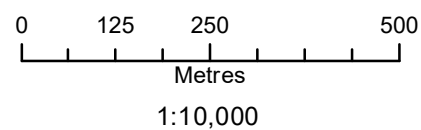
- Fence
- Proposed Permanent Approach
- Proposed Temporary Approach

* Some road names have not been verified, use with discretion

St. Vital Transmission Complex Construction Access Opportunities



Coordinate System: UTM Zone 14N NAD83
Data Source: MB Hydro, ProvMB, NRCAN
Date Created: August 27, 2021
Version: Final 1.01



Land Base

- Transmission Line
- Highway
- Major Road
- Local Road
- Railway (Operational)
- Railway (Discontinued)
- First Nation
- Provincial Forest
- Parcel Fabric
- Rural Municipality

Project Infrastructure

- ▲ Tower Location
- ★ Angle Tower Location
- Final Preferred Route
- Right of Way

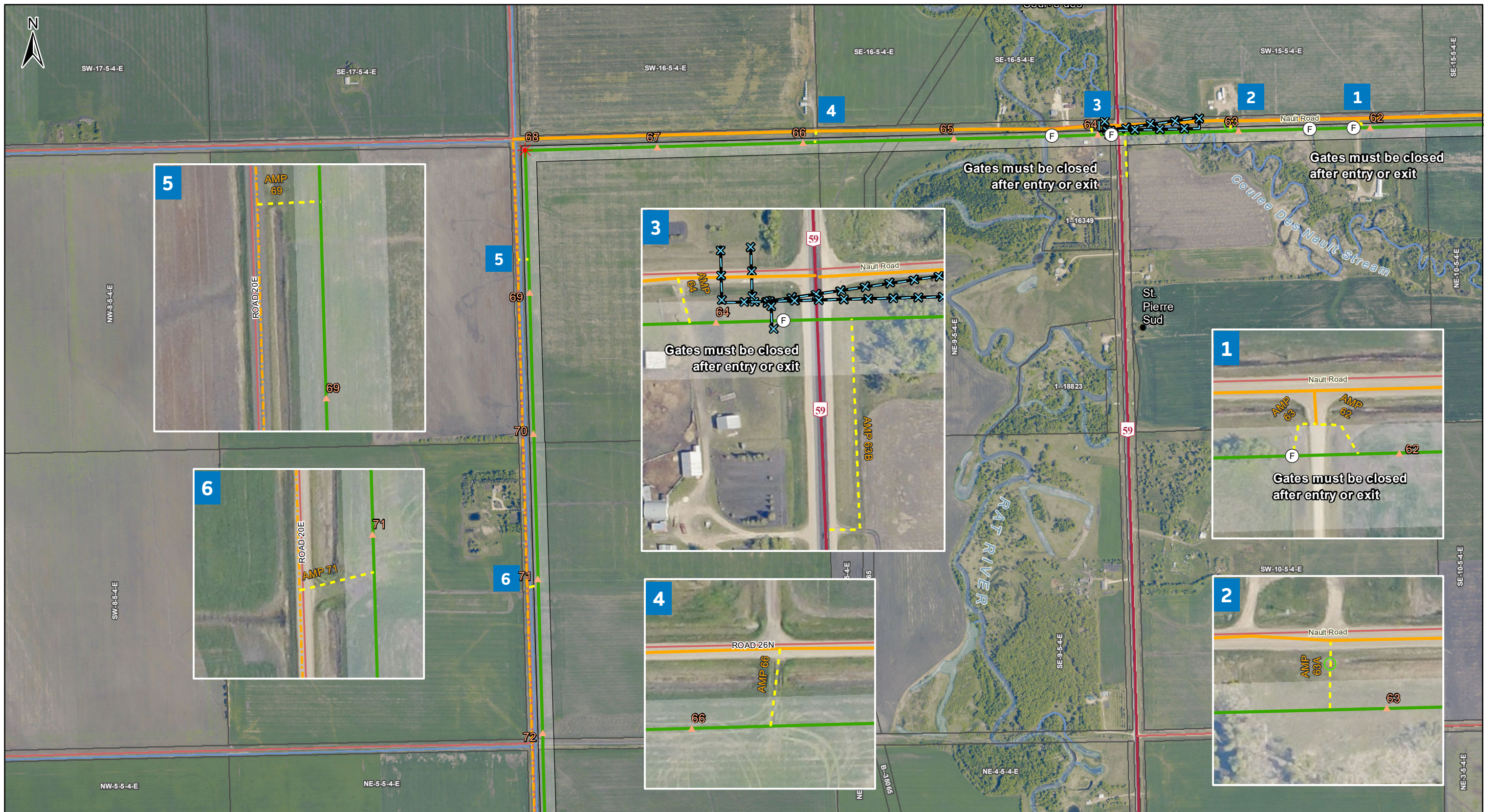
Points of Access

- Existing Gravel Road
 - Existing Gravel/Dirt Road
 - Field Access
 - New Trail
 - ✗ Restricted Access
 - ✗ Restricted - Livestock Operation
 - ✗ Underground Infrastructure
- * Underground infrastructure locations are approximate and incomplete. Contractors are responsible for any damage to underground infrastructure

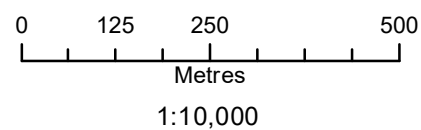
Approaches/Fences

- ⓔ Fence
 - Proposed Permanent Approach
 - Proposed Temporary Approach
- * Some road names have not been verified, use with discretion

St. Vital Transmission Complex Construction Access Opportunities



Coordinate System: UTM Zone 14N NAD83
Data Source: MB Hydro, ProvMB, NRCAN
Date Created: August 27, 2021
Version: Final 1.01



Land Base

- Transmission Line
- Highway
- Major Road
- Local Road
- Railway (Operational)
- Railway (Discontinued)
- First Nation
- Provincial Forest
- Parcel Fabric
- Rural Municipality

Project Infrastructure

- ▲ Tower Location
- ★ Angle Tower Location
- Final Preferred Route
- Right of Way

Points of Access

- Existing Gravel Road
 - Existing Gravel/Dirt Road
 - Field Access
 - New Trail
 - ✗ Restricted Access
 - ✗ Restricted - Livestock Operation
 - ✗ Underground Infrastructure
- * Underground infrastructure locations are approximate and incomplete. Contractors are responsible for any damage to underground infrastructure

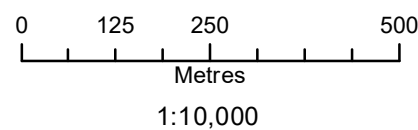
Approaches/Fences

- Ⓢ Fence
 - Ⓢ Proposed Permanent Approach
 - Ⓢ Proposed Temporary Approach
- * Some road names have not been verified, use with discretion

St. Vital Transmission Complex Construction Access Opportunities



Coordinate System: UTM Zone 14N NAD83
Data Source: MB Hydro, ProvMB, NRCAN
Date Created: August 27, 2021
Version: Final 1.01



Land Base

- Transmission Line
- Highway
- Major Road
- Local Road
- Railway (Operational)
- Railway (Discontinued)
- First Nation
- Provincial Forest
- Parcel Fabric
- Rural Municipality

Project Infrastructure

- Tower Location
- Angle Tower Location
- Final Preferred Route
- Right of Way

Points of Access

- Existing Gravel Road
- Existing Gravel/Dirt Road
- Field Access
- New Trail
- Restricted Access
- Restricted - Livestock Operation
- Underground Infrastructure

* Underground infrastructure locations are approximate and incomplete. Contractors are responsible for any damage to underground infrastructure

Approaches/Fences

- Fence
- Proposed Permanent Approach
- Proposed Temporary Approach

* Some road names have not been verified, use with discretion

St. Vital Transmission Complex Construction Access Opportunities



Coordinate System: UTM Zone 14N NAD83
Data Source: MB Hydro, ProvMB, NRCAN
Date Created: August 27, 2021
Version: Final 1.01

0 125 250 500
Metres
1:10,000

Land Base

- Transmission Line
- Highway
- Major Road
- Local Road
- Railway (Operational)
- Railway (Discontinued)
- First Nation
- Provincial Forest
- Parcel Fabric
- Rural Municipality

Project Infrastructure

- Tower Location
- Angle Tower Location
- Final Preferred Route
- Right of Way

Points of Access

- Existing Gravel Road
- Existing Gravel/Dirt Road
- Field Access
- New Trail
- Restricted Access
- Restricted - Livestock Operation
- Underground Infrastructure

* Underground infrastructure locations are approximate and incomplete. Contractors are responsible for any damage to underground infrastructure

Approaches/Fences

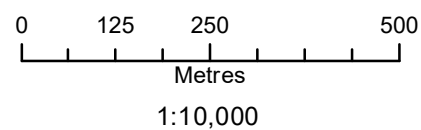
- Fence
- Proposed Permanent Approach
- Proposed Temporary Approach

* Some road names have not been verified, use with discretion

St. Vital Transmission Complex Construction Access Opportunities



Coordinate System: UTM Zone 14N NAD83
Data Source: MB Hydro, ProvMB, NRCAN
Date Created: August 27, 2021
Version: Final 1.01



Land Base

- Transmission Line
- Highway
- Major Road
- Local Road
- Railway (Operational)
- Railway (Discontinued)
- First Nation
- Provincial Forest
- Parcel Fabric
- Rural Municipality

Project Infrastructure

- Tower Location
- Angle Tower Location
- Final Preferred Route
- Right of Way

Points of Access

- Existing Gravel Road
- Existing Gravel/Dirt Road
- Field Access
- New Trail
- Restricted Access
- Restricted - Livestock Operation
- Underground Infrastructure

* Underground infrastructure locations are approximate and incomplete. Contractors are responsible for any damage to underground infrastructure

Approaches/Fences

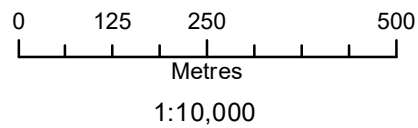
- Fence
- Proposed Permanent Approach
- Proposed Temporary Approach

* Some road names have not been verified, use with discretion

St. Vital Transmission Complex Construction Access Opportunities



Coordinate System: UTM Zone 14N NAD83
Data Source: MB Hydro, ProvMB, NRCAN
Date Created: August 27, 2021
Version: Final 1.01



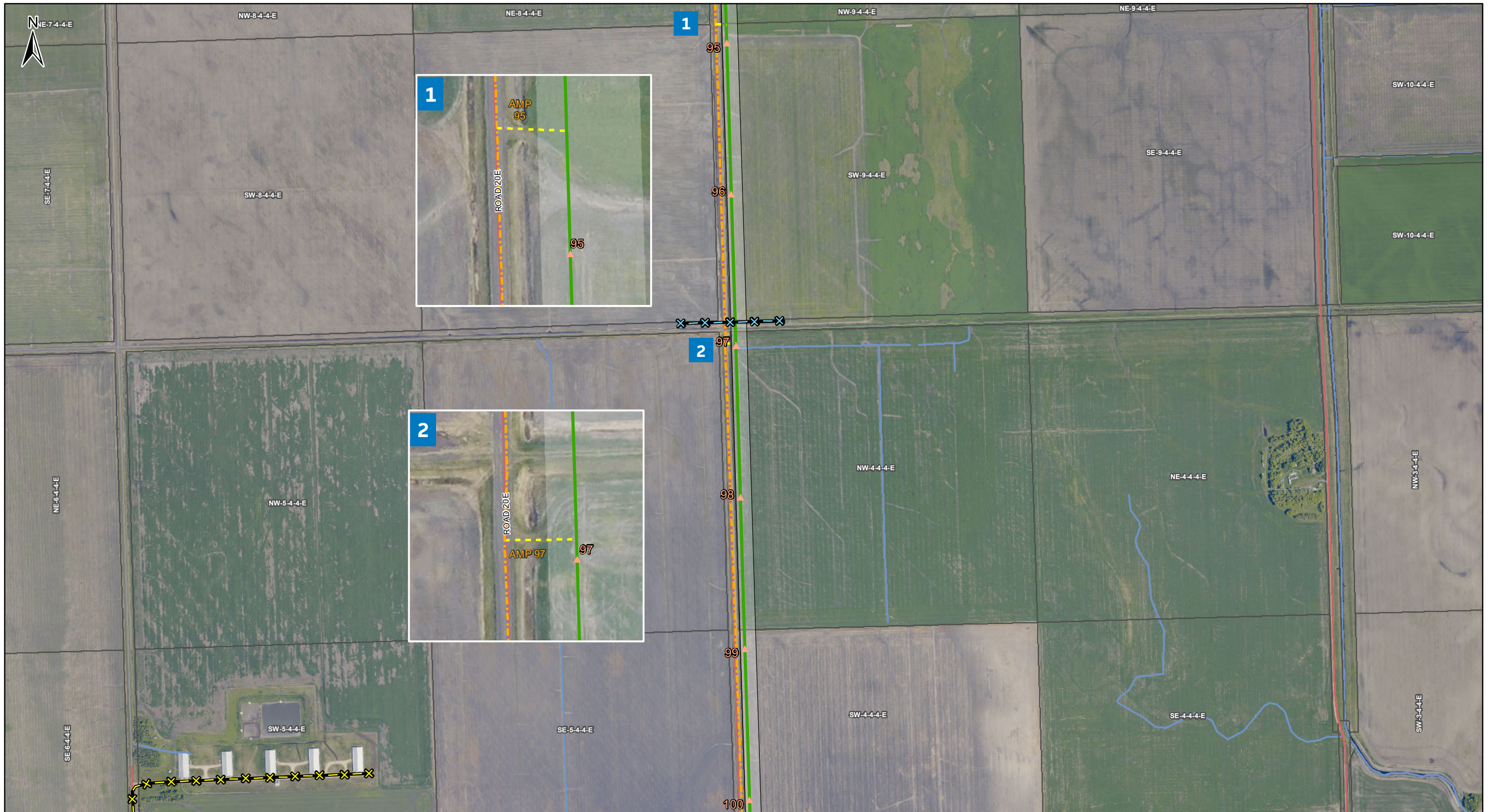
- Land Base**
- Transmission Line
 - Highway
 - Major Road
 - Local Road
 - Railway (Operational)
 - Railway (Discontinued)
 - First Nation
 - Provincial Forest
 - Parcel Fabric
 - Rural Municipality

- Project Infrastructure**
- Tower Location
 - Angle Tower Location
 - Final Preferred Route
 - Right of Way

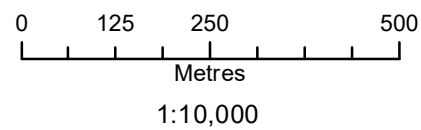
- Points of Access**
- Existing Gravel Road
 - Existing Gravel/Dirt Road
 - Field Access
 - New Trail
 - Restricted Access
 - Restricted - Livestock Operation
 - Underground Infrastructure
- * Underground infrastructure locations are approximate and incomplete. Contractors are responsible for any damage to underground infrastructure

- Approaches/Fences**
- Fence
 - Proposed Permanent Approach
 - Proposed Temporary Approach
- * Some road names have not been verified, use with discretion

St. Vital Transmission Complex Construction Access Opportunities



Coordinate System: UTM Zone 14N NAD83
Data Source: MB Hydro, ProvMB, NRCAN
Date Created: August 27, 2021
Version: Final 1.01



Land Base

- Transmission Line
- Highway
- Major Road
- Local Road
- Railway (Operational)
- Railway (Discontinued)
- First Nation
- Provincial Forest
- Parcel Fabric
- Rural Municipality

Project Infrastructure

- ▲ Tower Location
- ★ Angle Tower Location
- Final Preferred Route
- Right of Way

Points of Access

- Existing Gravel Road
- Existing Gravel/Dirt Road
- Field Access
- New Trail
- ✕ Restricted Access
- ✕ Restricted - Livestock Operation
- ✕ Underground Infrastructure

* Underground infrastructure locations are approximate and incomplete. Contractors are responsible for any damage to underground infrastructure

Approaches/Fences

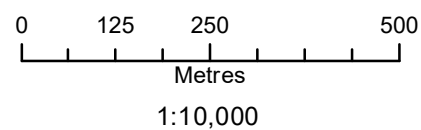
- ⓔ Fence
- Proposed Permanent Approach
- Proposed Temporary Approach

* Some road names have not been verified, use with discretion

St. Vital Transmission Complex Construction Access Opportunities



Coordinate System: UTM Zone 14N NAD83
Data Source: MB Hydro, ProvMB, NRCAN
Date Created: August 27, 2021
Version: Final 1.01



Land Base

- Transmission Line
- Highway
- Major Road
- Local Road
- Railway (Operational)
- Railway (Discontinued)
- First Nation
- Provincial Forest
- Parcel Fabric
- Rural Municipality

Project Infrastructure

- ▲ Tower Location
- ★ Angle Tower Location
- Final Preferred Route
- Right of Way

Points of Access

- Existing Gravel Road
- Existing Gravel/Dirt Road
- Field Access
- New Trail
- ✕ Restricted Access
- ✕ Restricted - Livestock Operation
- ✕ Underground Infrastructure

* Underground infrastructure locations are approximate and incomplete. Contractors are responsible for any damage to underground infrastructure

Approaches/Fences

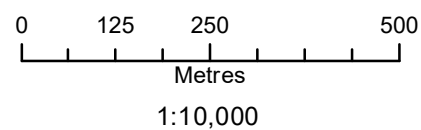
- ⓔ Fence
- Ⓢ Proposed Permanent Approach
- Ⓢ Proposed Temporary Approach

* Some road names have not been verified, use with discretion

St. Vital Transmission Complex Construction Access Opportunities



Coordinate System: UTM Zone 14N NAD83
Data Source: MB Hydro, ProvMB, NRCAN
Date Created: August 27, 2021
Version: Final 1.01



Land Base

- Transmission Line
- Highway
- Major Road
- Local Road
- Railway (Operational)
- Railway (Discontinued)
- First Nation
- Provincial Forest
- Parcel Fabric
- Rural Municipality

Project Infrastructure

- ▲ Tower Location
- ★ Angle Tower Location
- Final Preferred Route
- Right of Way

Points of Access

- Existing Gravel Road
 - Existing Gravel/Dirt Road
 - Field Access
 - New Trail
 - ✗ Restricted Access
 - ✗ Restricted - Livestock Operation
 - ✗ Underground Infrastructure
- * Underground infrastructure locations are approximate and incomplete. Contractors are responsible for any damage to underground infrastructure

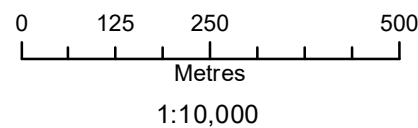
Approaches/Fences

- ⓔ Fence
 - Proposed Permanent Approach
 - Proposed Temporary Approach
- * Some road names have not been verified, use with discretion

St. Vital Transmission Complex Construction Access Opportunities



Coordinate System: UTM Zone 14N NAD83
Data Source: MB Hydro, ProvMB, NRCAN
Date Created: August 27, 2021
Version: Final 1.01



Land Base

- Transmission Line
- Highway
- Major Road
- Local Road
- Railway (Operational)
- Railway (Discontinued)
- First Nation
- Provincial Forest
- Parcel Fabric
- Rural Municipality

Project Infrastructure

- ▲ Tower Location
- ★ Angle Tower Location
- Final Preferred Route
- Right of Way

Points of Access

- Existing Gravel Road
 - Existing Gravel/Dirt Road
 - Field Access
 - New Trail
 - ✗ Restricted Access
 - ✗ Restricted - Livestock Operation
 - ✗ Underground Infrastructure
- * Underground infrastructure locations are approximate and incomplete. Contractors are responsible for any damage to underground infrastructure

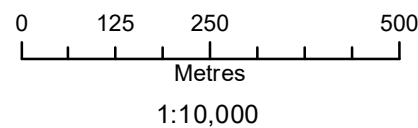
Approaches/Fences

- ⓔ Fence
 - Proposed Permanent Approach
 - Proposed Temporary Approach
- * Some road names have not been verified, use with discretion

St. Vital Transmission Complex Construction Access Opportunities



Coordinate System: UTM Zone 14N NAD83
Data Source: MB Hydro, ProvMB, NRCAN
Date Created: August 27, 2021
Version: Final 1.01



Land Base

- Transmission Line
- Highway
- Major Road
- Local Road
- Railway (Operational)
- Railway (Discontinued)
- First Nation
- Provincial Forest
- Parcel Fabric
- Rural Municipality

Project Infrastructure

- ▲ Tower Location
- ★ Angle Tower Location
- Final Preferred Route
- Right of Way

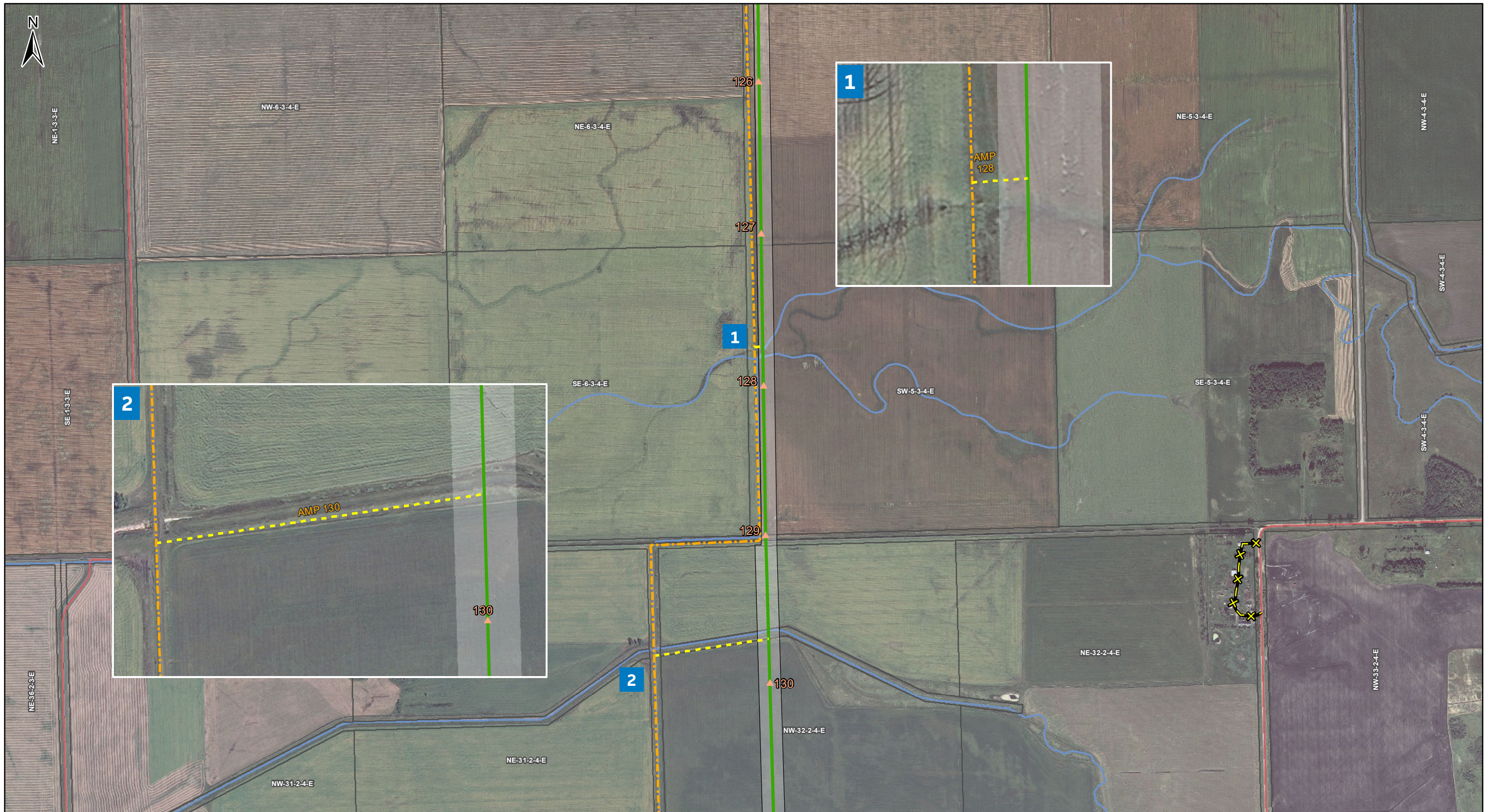
Points of Access

- Existing Gravel Road
 - Existing Gravel/Dirt Road
 - Field Access
 - New Trail
 - ✗ Restricted Access
 - ✗ Restricted - Livestock Operation
 - ✗ Underground Infrastructure
- * Underground infrastructure locations are approximate and incomplete. Contractors are responsible for any damage to underground infrastructure

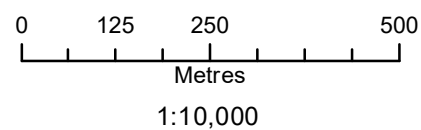
Approaches/Fences

- ⓔ Fence
 - Proposed Permanent Approach
 - Proposed Temporary Approach
- * Some road names have not been verified, use with discretion

St. Vital Transmission Complex Construction Access Opportunities



Coordinate System: UTM Zone 14N NAD83
Data Source: MB Hydro, ProvMB, NRCAN
Date Created: August 27, 2021
Version: Final 1.01



Land Base

- Transmission Line
- Highway
- Major Road
- Local Road
- Railway (Operational)
- Railway (Discontinued)
- First Nation
- Provincial Forest
- Parcel Fabric
- Rural Municipality

Project Infrastructure

- Tower Location
- Angle Tower Location
- Final Preferred Route
- Right of Way

Points of Access

- Existing Gravel Road
- Existing Gravel/Dirt Road
- Field Access
- New Trail
- Restricted Access
- Restricted - Livestock Operation
- Underground Infrastructure

* Underground infrastructure locations are approximate and incomplete. Contractors are responsible for any damage to underground infrastructure

Approaches/Fences

- Fence
- Proposed Permanent Approach
- Proposed Temporary Approach

* Some road names have not been verified, use with discretion

St. Vital Transmission Complex Construction Access Opportunities



Coordinate System: UTM Zone 14N NAD83
Data Source: MB Hydro, ProvMB, NRCAN
Date Created: August 27, 2021
Version: Final 1.01

0 125 250 500
Metres
1:10,000

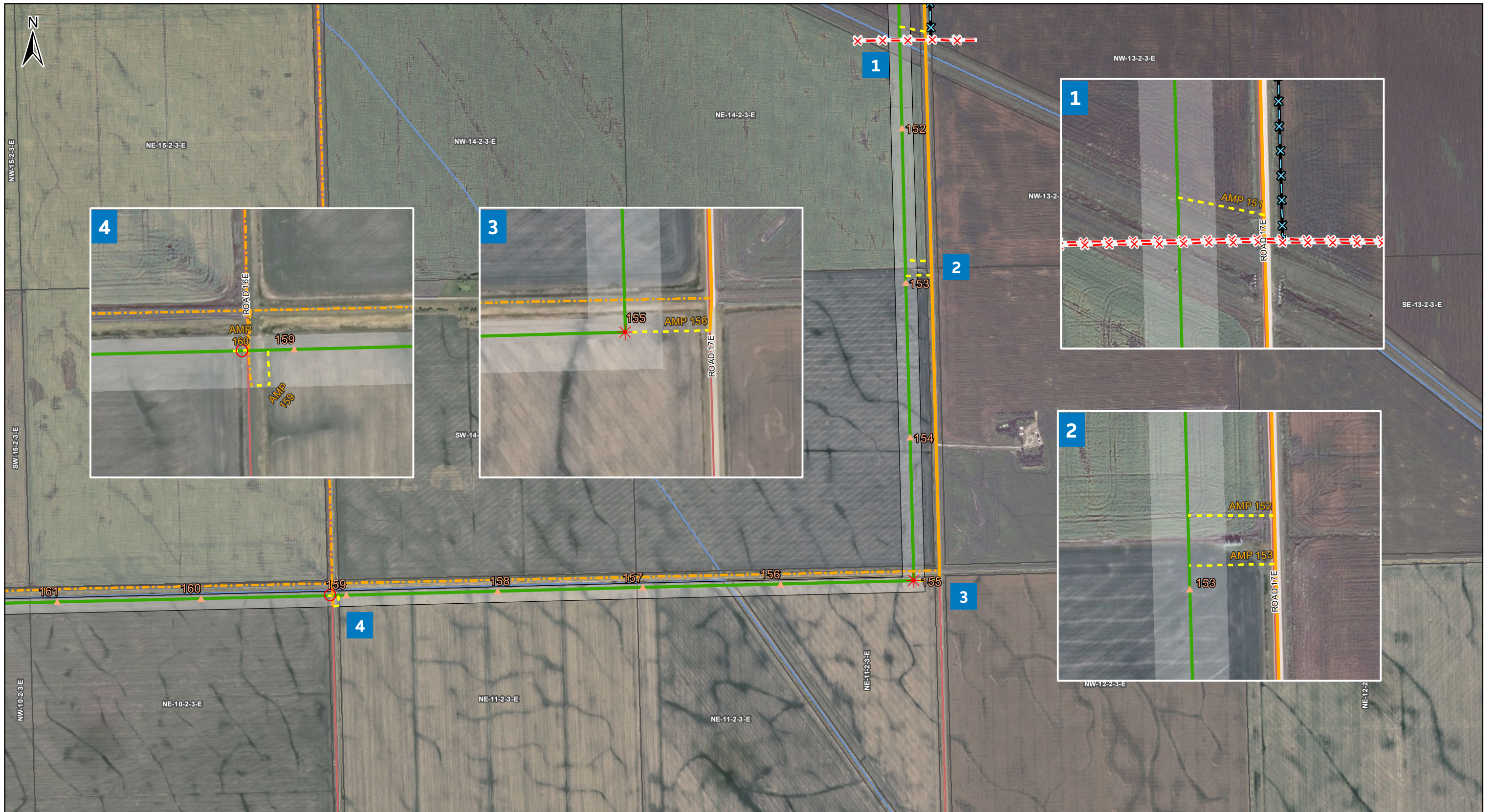
- Land Base**
- Transmission Line
 - Highway
 - Major Road
 - Local Road
 - Railway (Operational)
 - Railway (Discontinued)
 - First Nation
 - Provincial Forest
 - Parcel Fabric
 - Rural Municipality

- Project Infrastructure**
- Tower Location
 - Angle Tower Location
 - Final Preferred Route
 - Right of Way

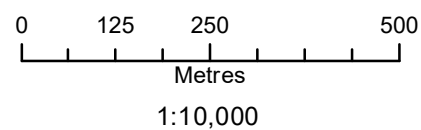
- Points of Access**
- Existing Gravel Road
 - Existing Gravel/Dirt Road
 - Field Access
 - New Trail
 - Restricted Access
 - Restricted - Livestock Operation
 - Underground Infrastructure
- * Underground infrastructure locations are approximate and incomplete. Contractors are responsible for any damage to underground infrastructure

- Approaches/Fences**
- Fence
 - Proposed Permanent Approach
 - Proposed Temporary Approach
- * Some road names have not been verified, use with discretion

St. Vital Transmission Complex Construction Access Opportunities



Coordinate System: UTM Zone 14N NAD83
Data Source: MB Hydro, ProvMB, NRCAN
Date Created: August 27, 2021
Version: Final 1.01



Land Base

- Transmission Line
- Highway
- Major Road
- Local Road
- Railway (Operational)
- Railway (Discontinued)
- First Nation
- Provincial Forest
- Parcel Fabric
- Rural Municipality

Project Infrastructure

- Tower Location
- Angle Tower Location
- Final Preferred Route
- Right of Way

Points of Access

- Existing Gravel Road
- Existing Gravel/Dirt Road
- Field Access
- New Trail
- Restricted Access
- Restricted - Livestock Operation
- Underground Infrastructure

* Underground infrastructure locations are approximate and incomplete. Contractors are responsible for any damage to underground infrastructure

Approaches/Fences

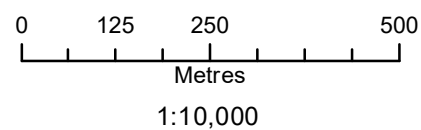
- Fence
- Proposed Permanent Approach
- Proposed Temporary Approach

* Some road names have not been verified, use with discretion

St. Vital Transmission Complex Construction Access Opportunities



Coordinate System: UTM Zone 14N NAD83
Data Source: MB Hydro, ProvMB, NRCAN
Date Created: August 27, 2021
Version: Final 1.01



Land Base

- Transmission Line
- Highway
- Major Road
- Local Road
- Railway (Operational)
- Railway (Discontinued)
- First Nation
- Provincial Forest
- Parcel Fabric
- Rural Municipality

Project Infrastructure

- ▲ Tower Location
- ★ Angle Tower Location
- Final Preferred Route
- Right of Way

Points of Access

- Existing Gravel Road
 - Existing Gravel/Dirt Road
 - Field Access
 - New Trail
 - ✕ Restricted Access
 - ✕ Restricted - Livestock Operation
 - ✕ Underground Infrastructure
- * Underground infrastructure locations are approximate and incomplete. Contractors are responsible for any damage to underground infrastructure

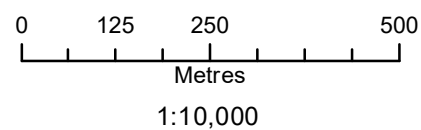
Approaches/Fences

- ⓔ Fence
 - Proposed Permanent Approach
 - Proposed Temporary Approach
- * Some road names have not been verified, use with discretion

St. Vital Transmission Complex Construction Access Opportunities



Coordinate System: UTM Zone 14N NAD83
Data Source: MB Hydro, ProvMB, NRCAN
Date Created: August 27, 2021
Version: Final 1.01



Land Base

- Transmission Line
- Highway
- Major Road
- Local Road
- Railway (Operational)
- Railway (Discontinued)
- First Nation
- Provincial Forest
- Parcel Fabric
- Rural Municipality

Project Infrastructure

- ▲ Tower Location
- ★ Angle Tower Location
- Final Preferred Route
- Right of Way

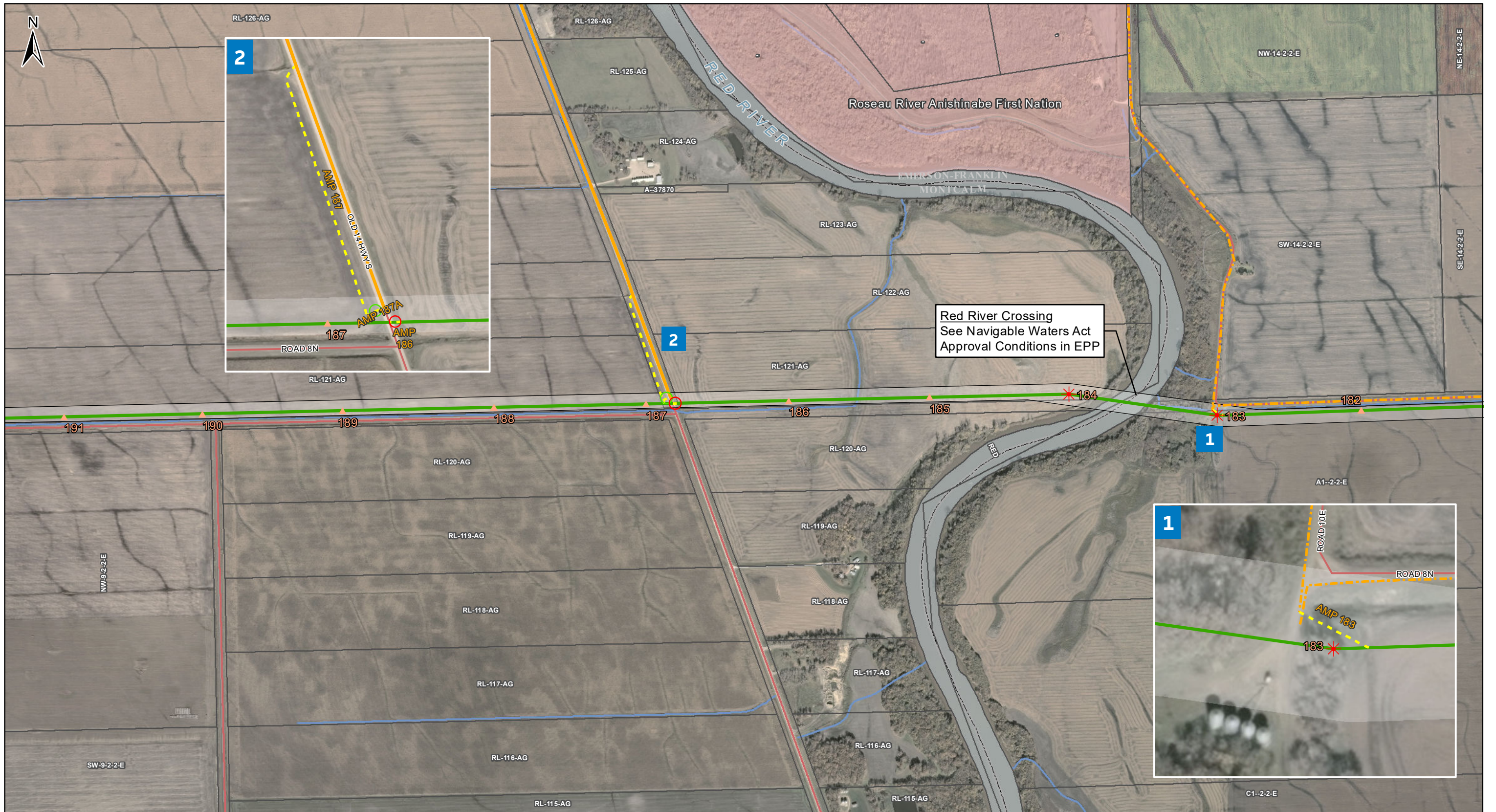
Points of Access

- Existing Gravel Road
 - Existing Gravel/Dirt Road
 - Field Access
 - New Trail
 - ✗ Restricted Access
 - ✗ Restricted - Livestock Operation
 - ✗ Underground Infrastructure
- * Underground infrastructure locations are approximate and incomplete. Contractors are responsible for any damage to underground infrastructure

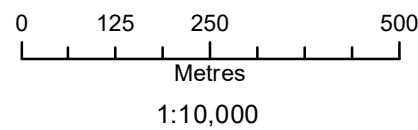
Approaches/Fences

- ⓔ Fence
 - Proposed Permanent Approach
 - Proposed Temporary Approach
- * Some road names have not been verified, use with discretion

St. Vital Transmission Complex Construction Access Opportunities



Coordinate System: UTM Zone 14N NAD83
Data Source: MB Hydro, ProvMB, NRCAN
Date Created: August 27, 2021
Version: Final 1.01



Land Base

- Transmission Line
- Highway
- Major Road
- Local Road
- Railway (Operational)
- Railway (Discontinued)
- First Nation
- Provincial Forest
- Parcel Fabric
- Rural Municipality

Project Infrastructure

- ▲ Tower Location
- ★ Angle Tower Location
- Final Preferred Route
- Right of Way

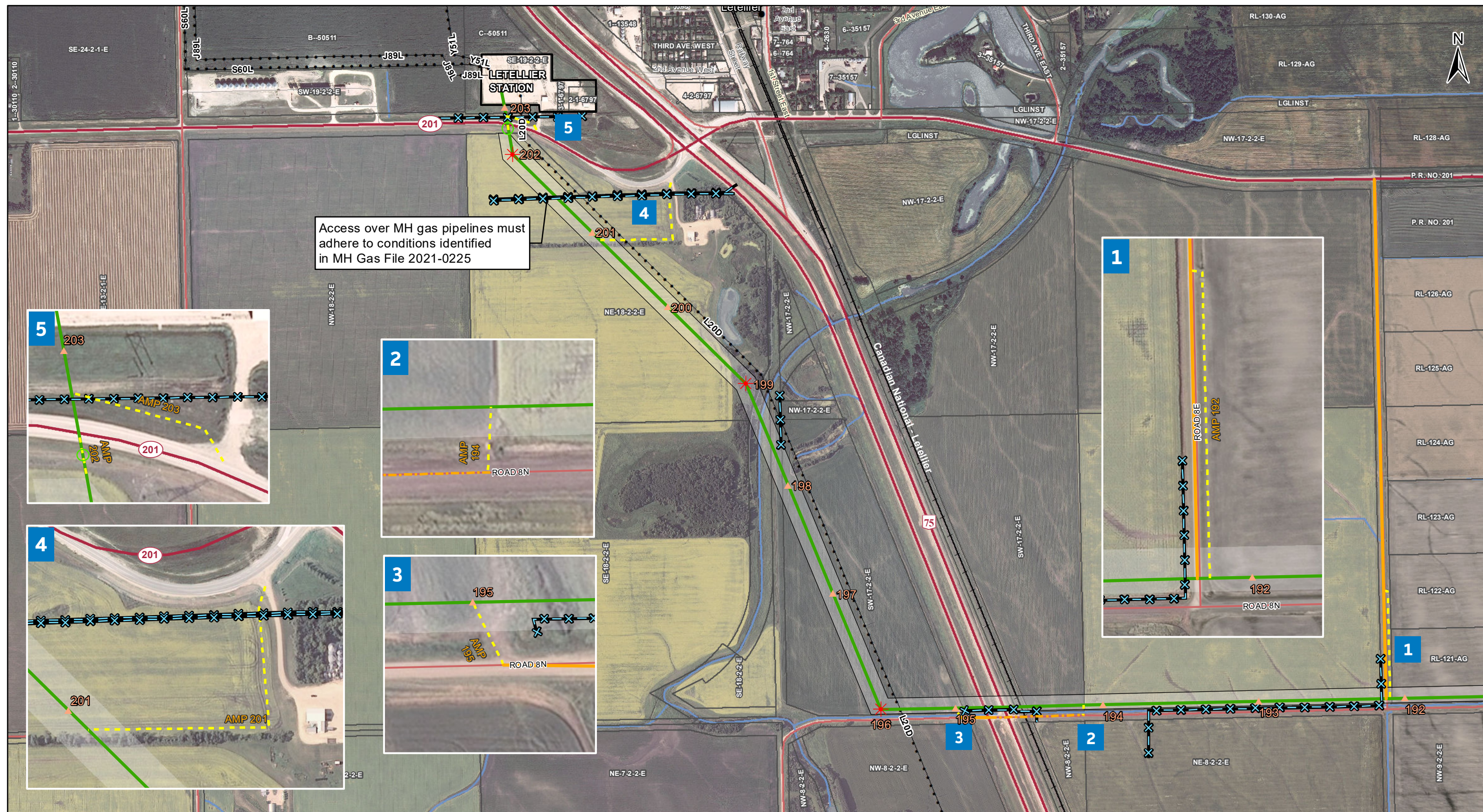
Points of Access

- Existing Gravel Road
 - Existing Gravel/Dirt Road
 - Field Access
 - New Trail
 - ✗ Restricted Access
 - ✗ Restricted - Livestock Operation
 - ✗ Underground Infrastructure
- * Underground infrastructure locations are approximate and incomplete. Contractors are responsible for any damage to underground infrastructure

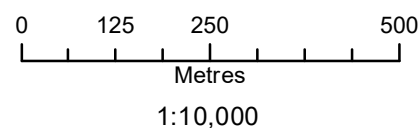
Approaches/Fences

- ⓔ Fence
 - Proposed Permanent Approach
 - Proposed Temporary Approach
- * Some road names have not been verified, use with discretion

St. Vital Transmission Complex Construction Access Opportunities



Coordinate System: UTM Zone 14N NAD83
 Data Source: MB Hydro, ProvMB, NRCAN
 Date Created: August 27, 2021
 Version: Final 1.01



- Land Base**
- Transmission Line
 - Highway
 - Major Road
 - Local Road
 - Railway (Operational)
 - Railway (Discontinued)
 - First Nation
 - Provincial Forest
 - Parcel Fabric
 - Rural Municipality

- Project Infrastructure**
- ▲ Tower Location
 - ★ Angle Tower Location
 - Final Preferred Route
 - Right of Way
 - Letellier Station

- Points of Access**
- Existing Gravel Road
 - Existing Gravel/Dirt Road
 - Field Access
 - New Trail
 - ✕ Restricted Access
 - ✕ Restricted - Livestock Operation
 - ✕ Underground Infrastructure
- * Underground infrastructure locations are approximate and incomplete. Contractors are responsible for any damage to underground infrastructure

- Approaches/Fences**
- ⓔ Fence
 - ⓔ Proposed Permanent Approach
 - ⓔ Proposed Temporary Approach
- * Some road names have not been verified, use with discretion

St. Vital Transmission Complex Construction Access Opportunities