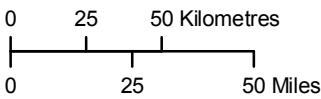


Coordinate System: UTM Zone 14N NAD83
Data Source: MB Hydro, MMM, Stantec, ProvMB, NRCAN, Joro
Date Created: June 24, 2011



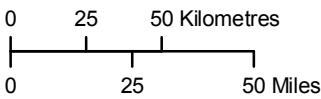
1:2,500,000

Wolverine Aerial Survey

2011 Tracks and Observations

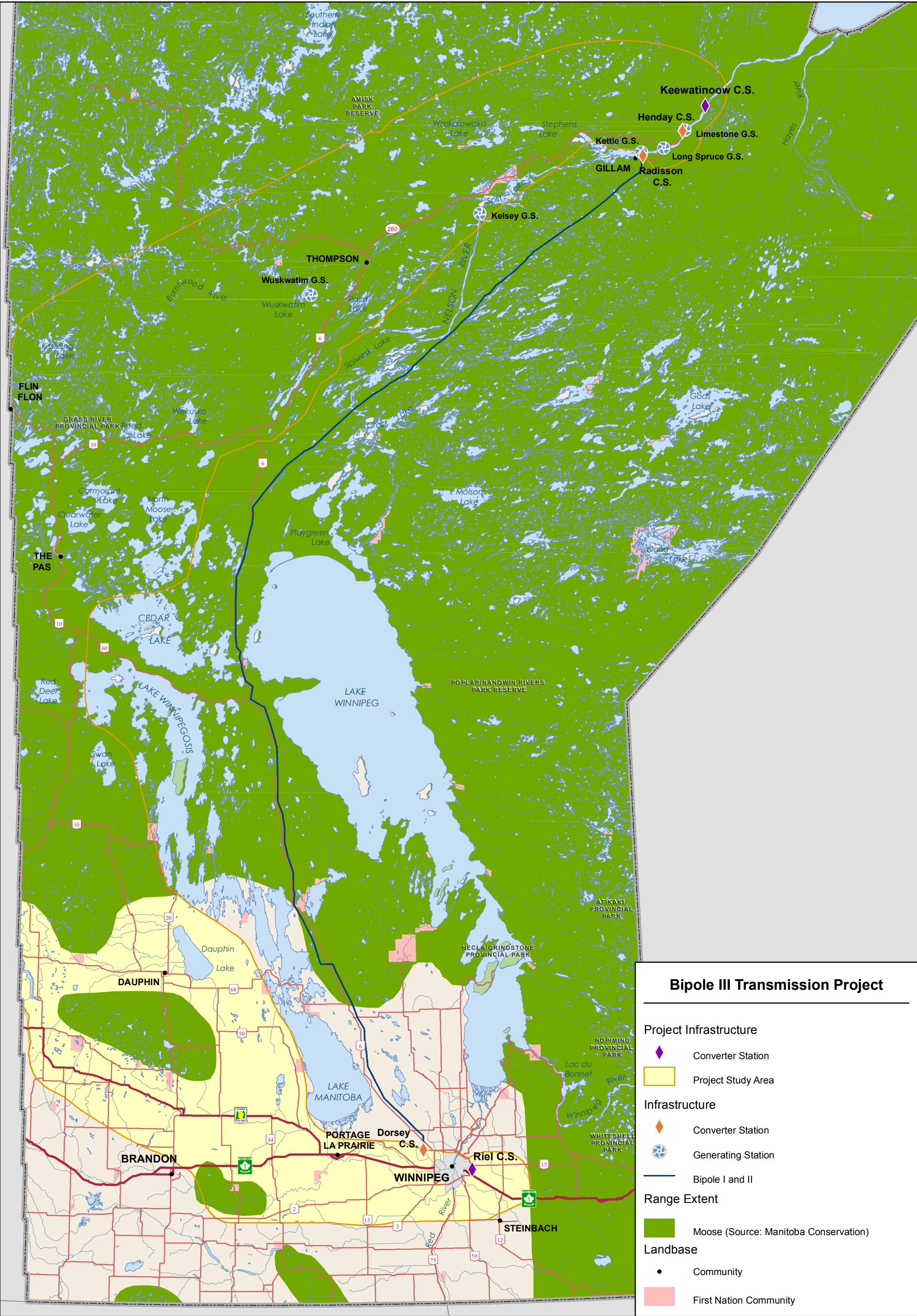


Coordinate System: UTM Zone 14N NAD83
Data Source: MB Hydro, MMM, Stantec, ProvMB, NRCAN, Joro
Date Created: October 24, 2011



1:2,500,000

Wolverine Track Density Along The Final Preferred Route



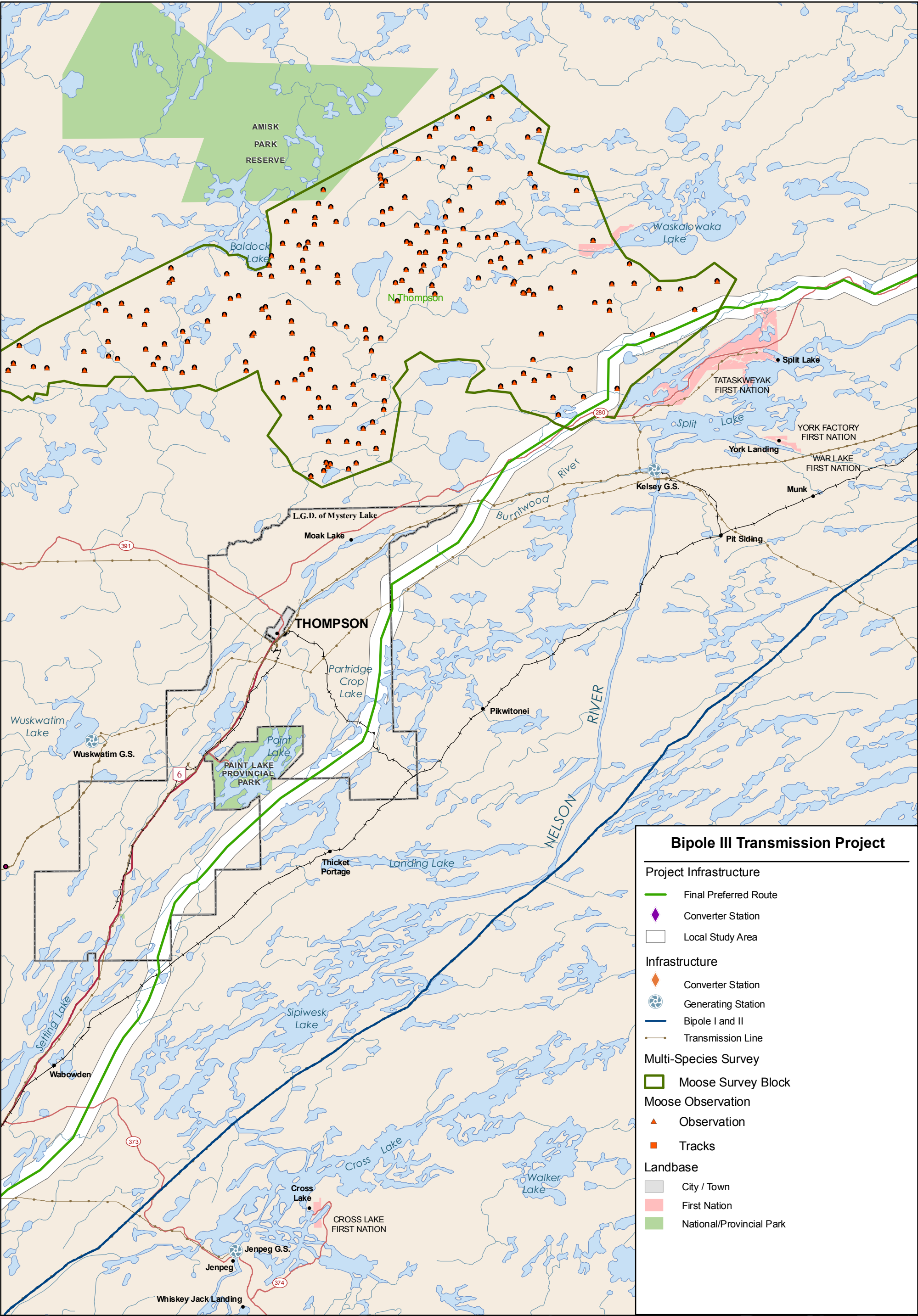
Coordinate System: UTM Zone 14N NAD83
Data Source: MB Hydro, MMM, Stantec, ProvMB, NRCAN, Joro
Date Created: July 12, 2011

0 25 50 Kilometres
0 25 50 Miles

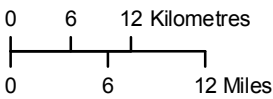


1:2,500,000

Extent of Moose Range in Manitoba



Coordinate System: UTM Zone 14N NAD83
Data Source: MB Hydro, MMM, Stantec, ProvMB, Joro
Date Created: October 25, 2011

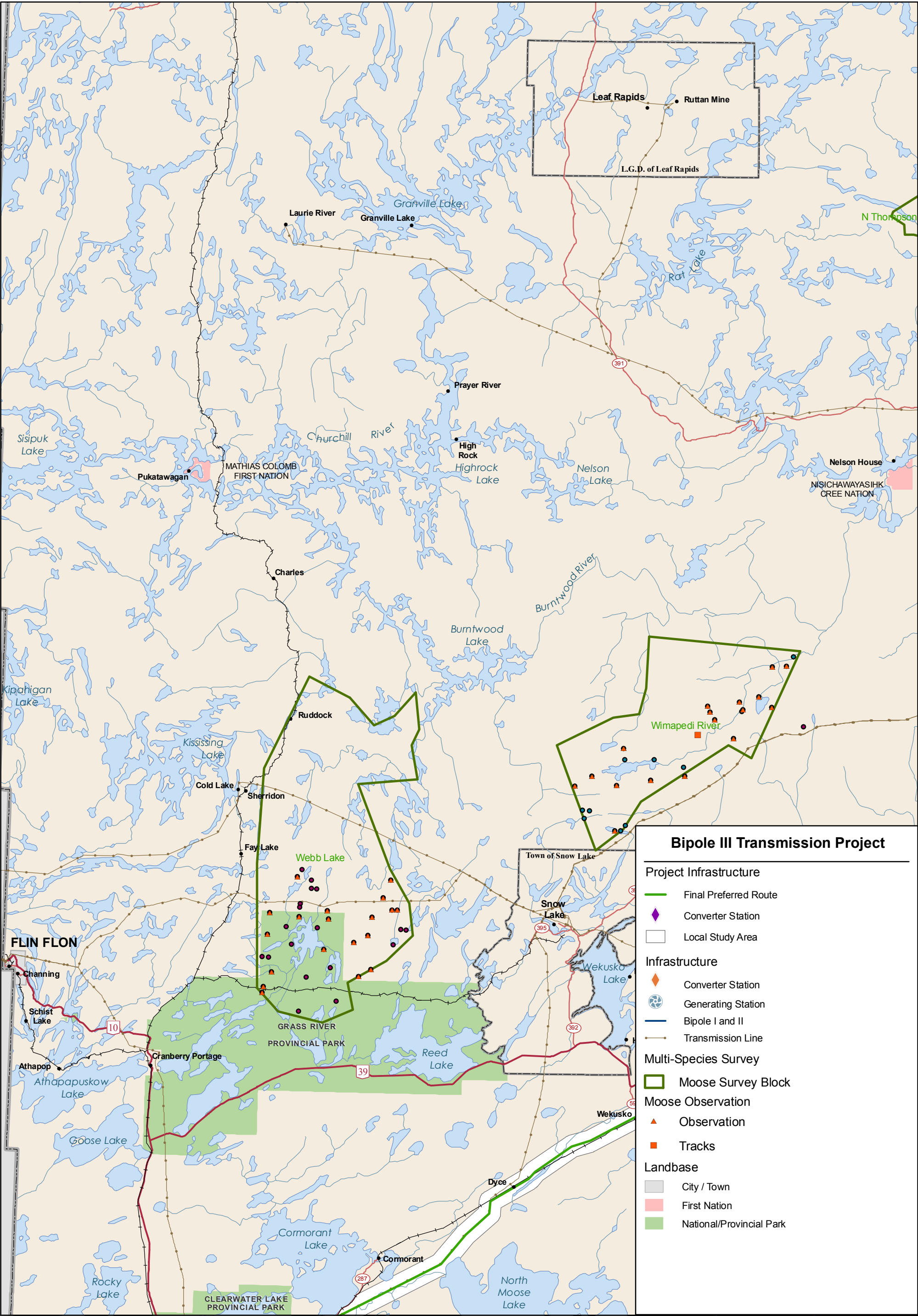


1:750,000

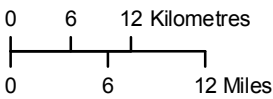


High Quality Habitat Moose Surveys

2010 Survey Results



Coordinate System: UTM Zone 14N NAD83
Data Source: MB Hydro, MMM, Stantec, ProvMB, Joro
Date Created: October 25, 2011



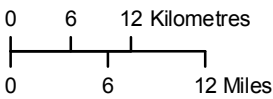
1:750,000

High Quality Habitat Moose Surveys

2010 Survey Results



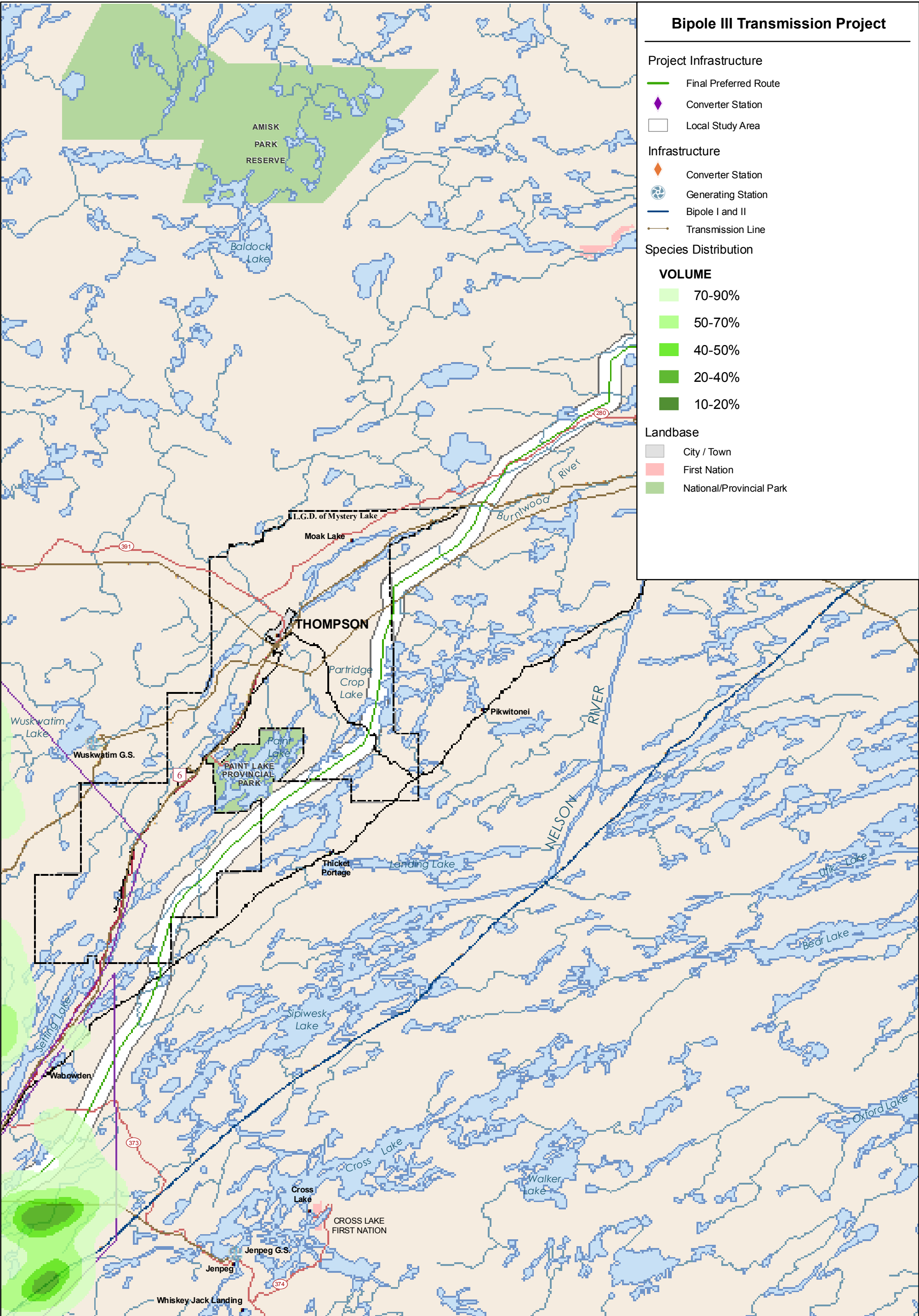
Coordinate System: UTM Zone 14N NAD83
Data Source: MB Hydro, MMM, Stantec, ProvMB, Joro
Date Created: October 25, 2011

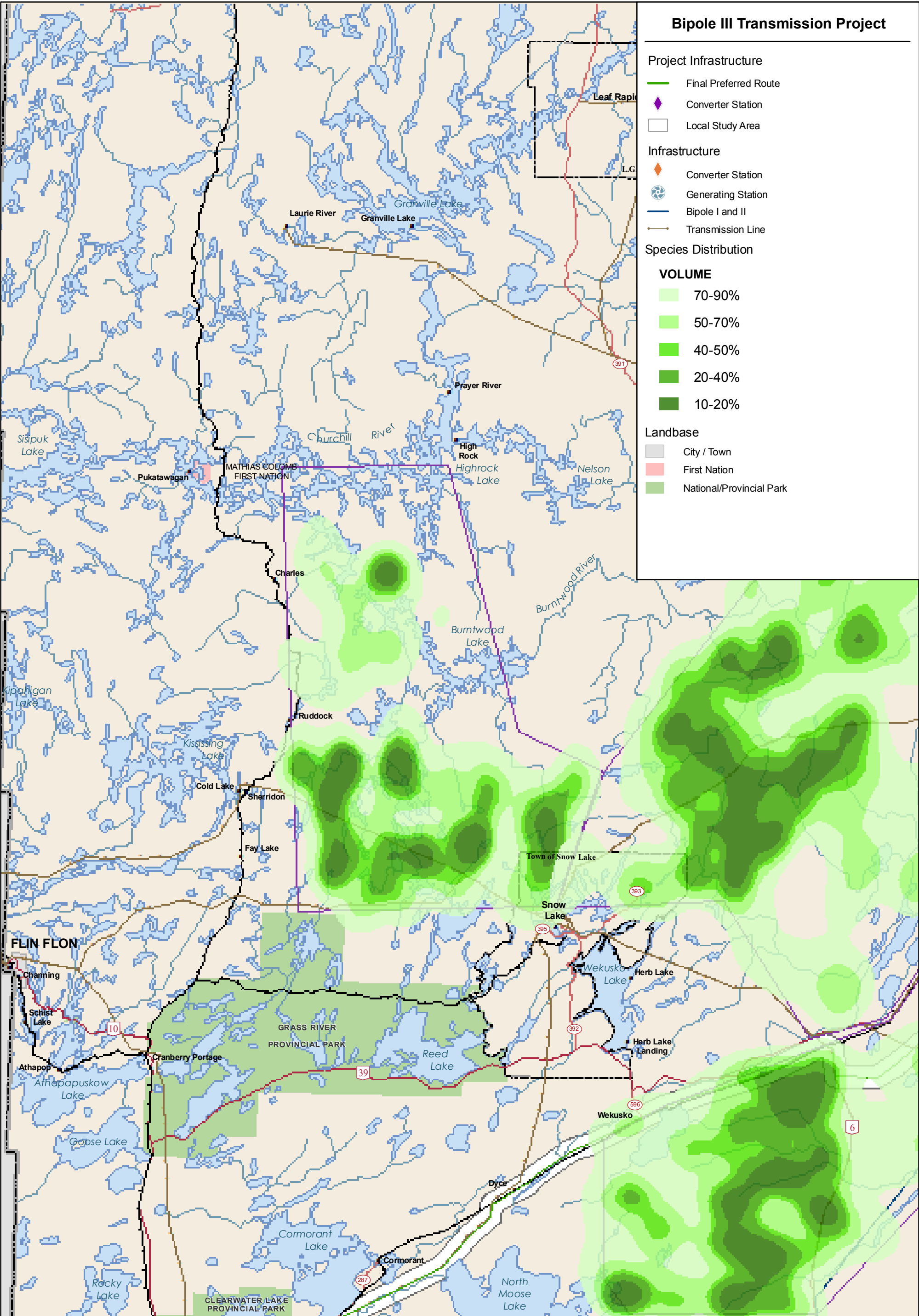


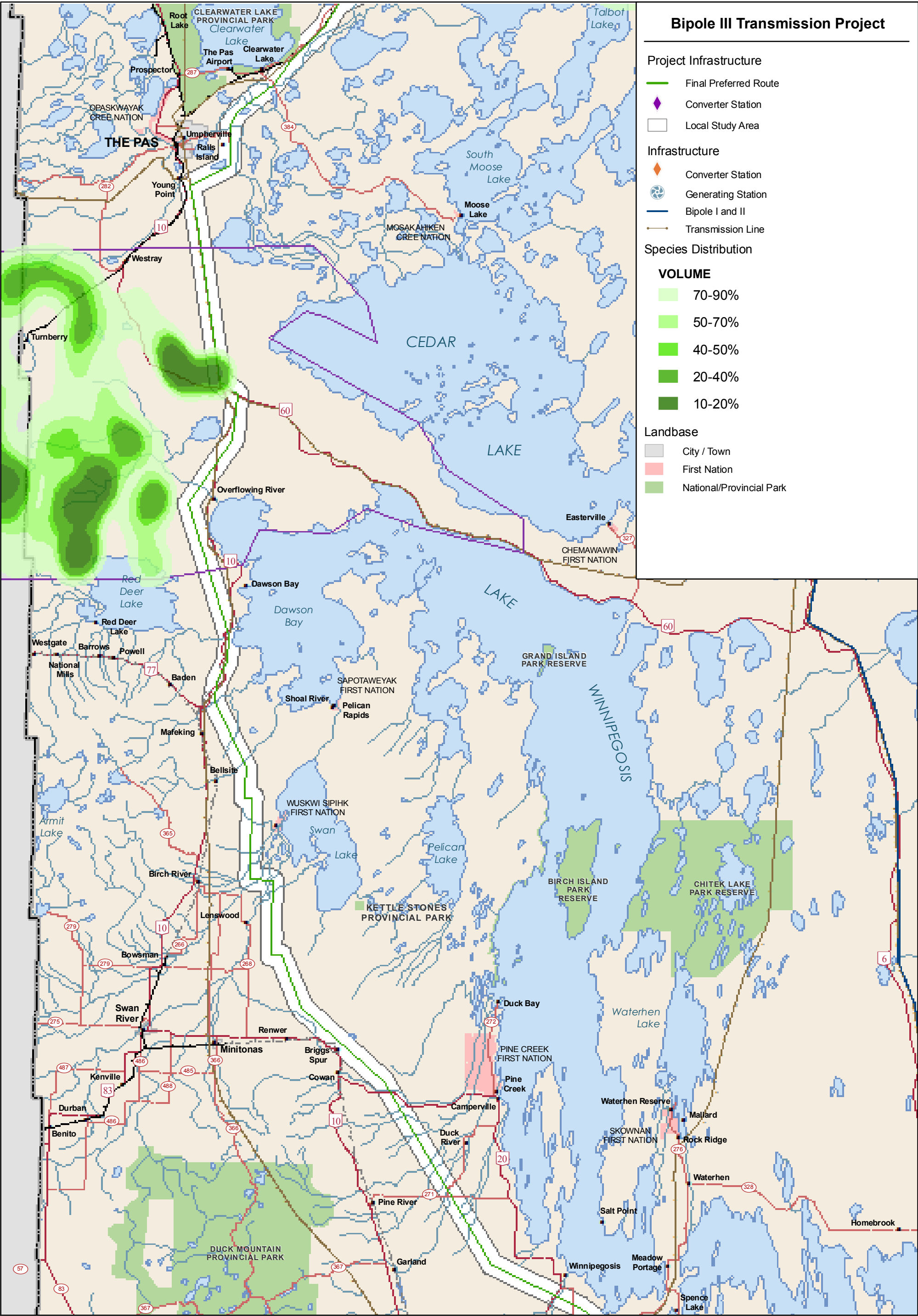
1:750,000

High Quality Habitat Moose Surveys

2010 Survey Results

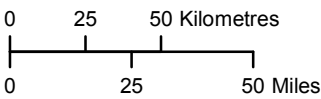








Coordinate System: UTM Zone 14N NAD83
Data Source: MB Hydro, MMM, Stantec, ProvMB, NRCAN
Date Created: June 21, 2011

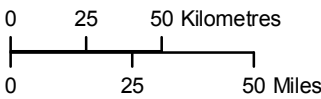


1:2,500,000

Final Preferred Route Mammal Stratification Surveys 2011 Moose Track Observations



Coordinate System: UTM Zone 14N NAD83
Data Source: MB Hydro, MMM, Stantec, ProvMB, NRCAN, Joro
Date Created: October 24, 2011



1:2,500,000

Moose Track Density Along The Final Preferred Route

Bipole III Transmission Project

Project Infrastructure
Final Preferred Route

Infrastructure
Transmission Line

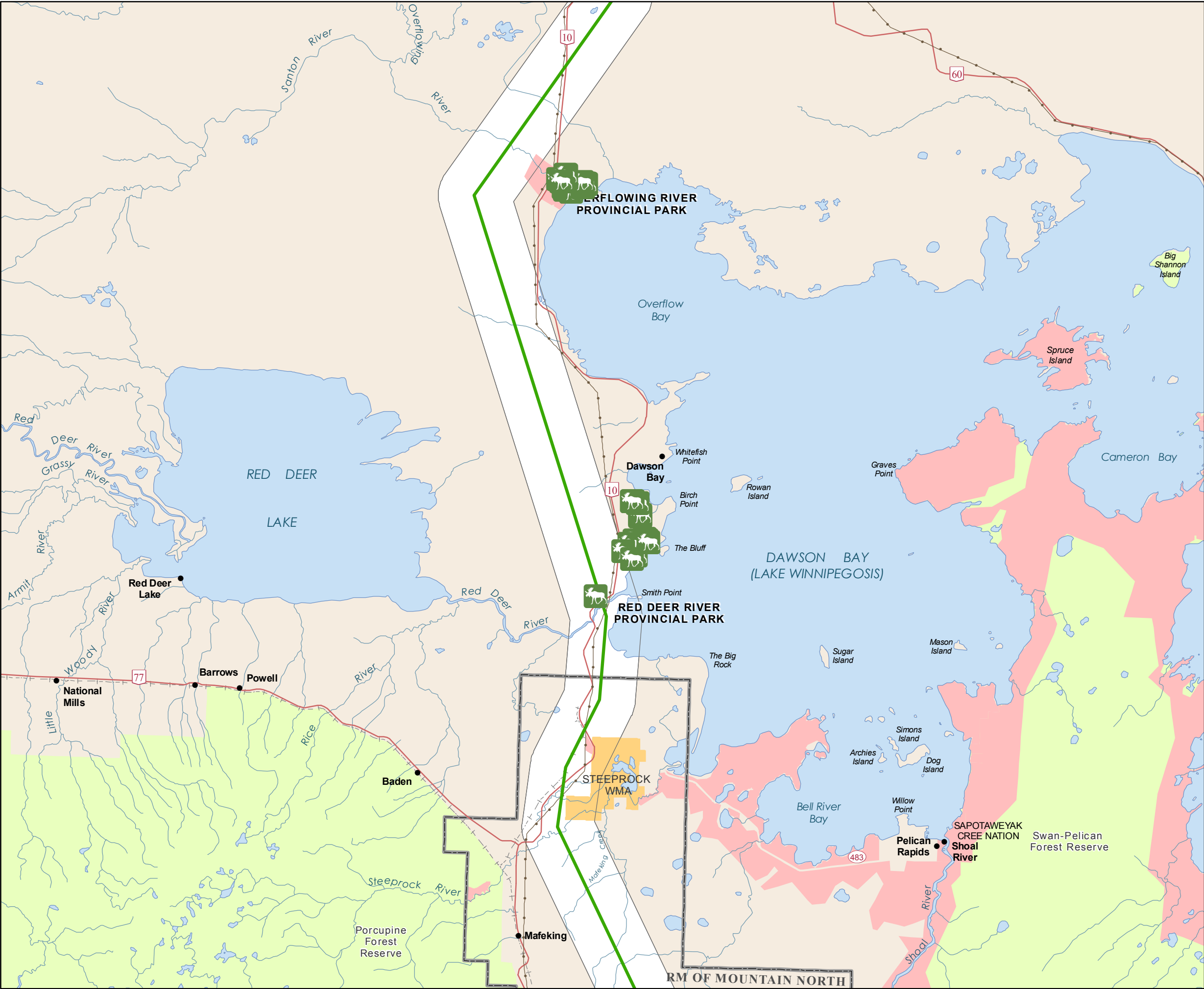
Summer Mammal Tracking
SPECIES
moos

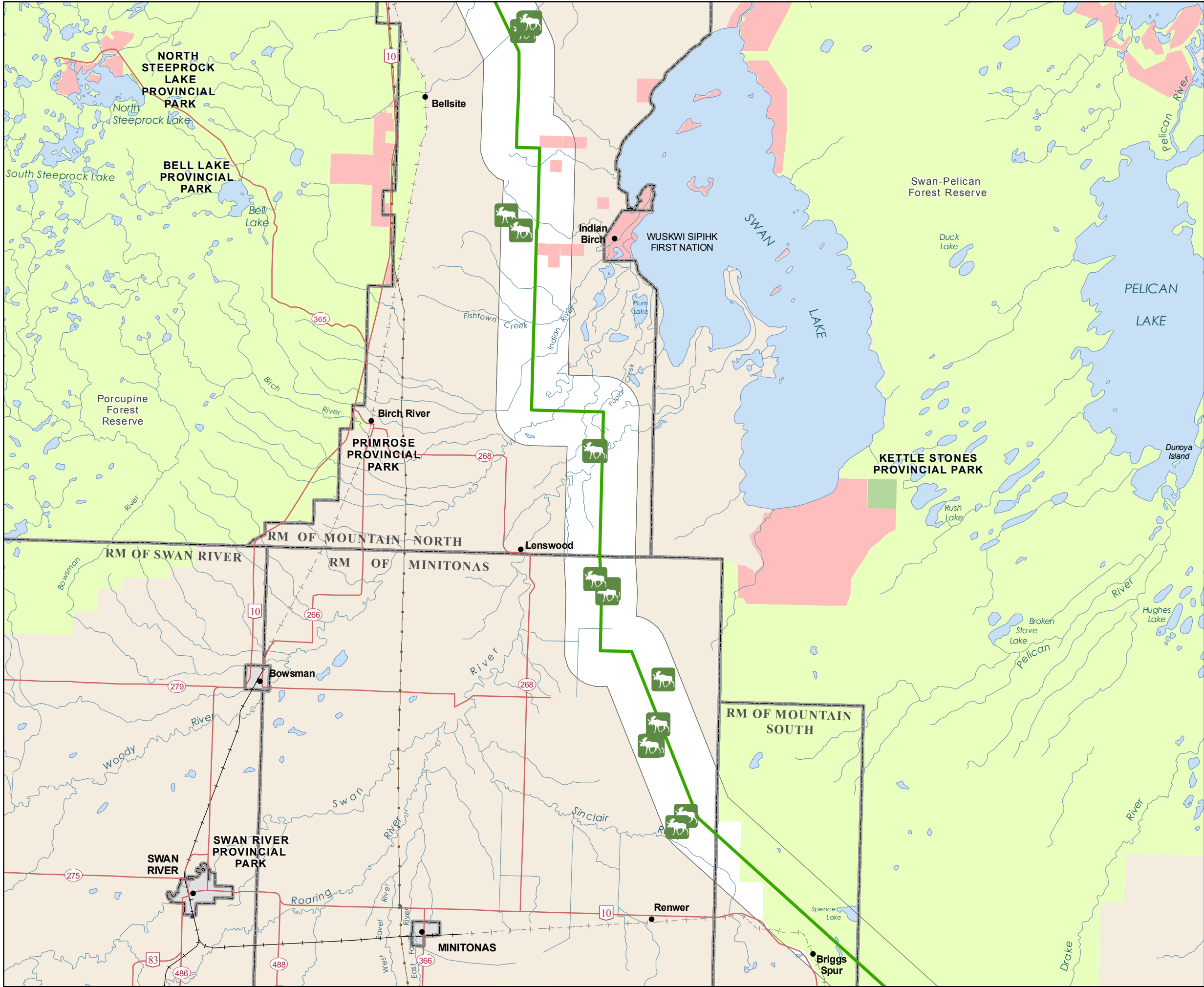
Landbase
Community
City / Town
Rural Municipality
First Nation
National/Provincial Park
Provincial Forest
Wildlife Management Area

Coordinate System: UTM Zone 14N NAD83
Data Source: MBHydro, MMM, Stantec, ProvMB, NRCAN, WRCS
Date Created: July 13, 2011
0 5 10 Kilometres
0 3 6 Miles
1:250,000

Summer Mammal Tracking

Moose Observations





Bipole III Transmission Project

Project Infrastructure

Final Preferred Route

Infrastructure

Transmission Line

Summer Mammal Tracking

SPECIES

moos

Landbase

- Community
- City / Town
- Rural Municipality
- First Nation
- National/Provincial Park
- Provincial Forest
- Wildlife Management Area

Coordinate System: UTM Zone 14N NAD83
Data Source: MBHydro, MMM, Stantec, ProvMB, NRCAN, WRCS
Date Created: July 13, 2011


0 5 10 Kilometres
0 3 6 Miles


1:250,000

Summer Mammal Tracking


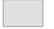



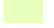

Moose Observations




Bipole III Transmission Project

Project Infrastructure
 Final Preferred Route

Infrastructure
 Transmission Line

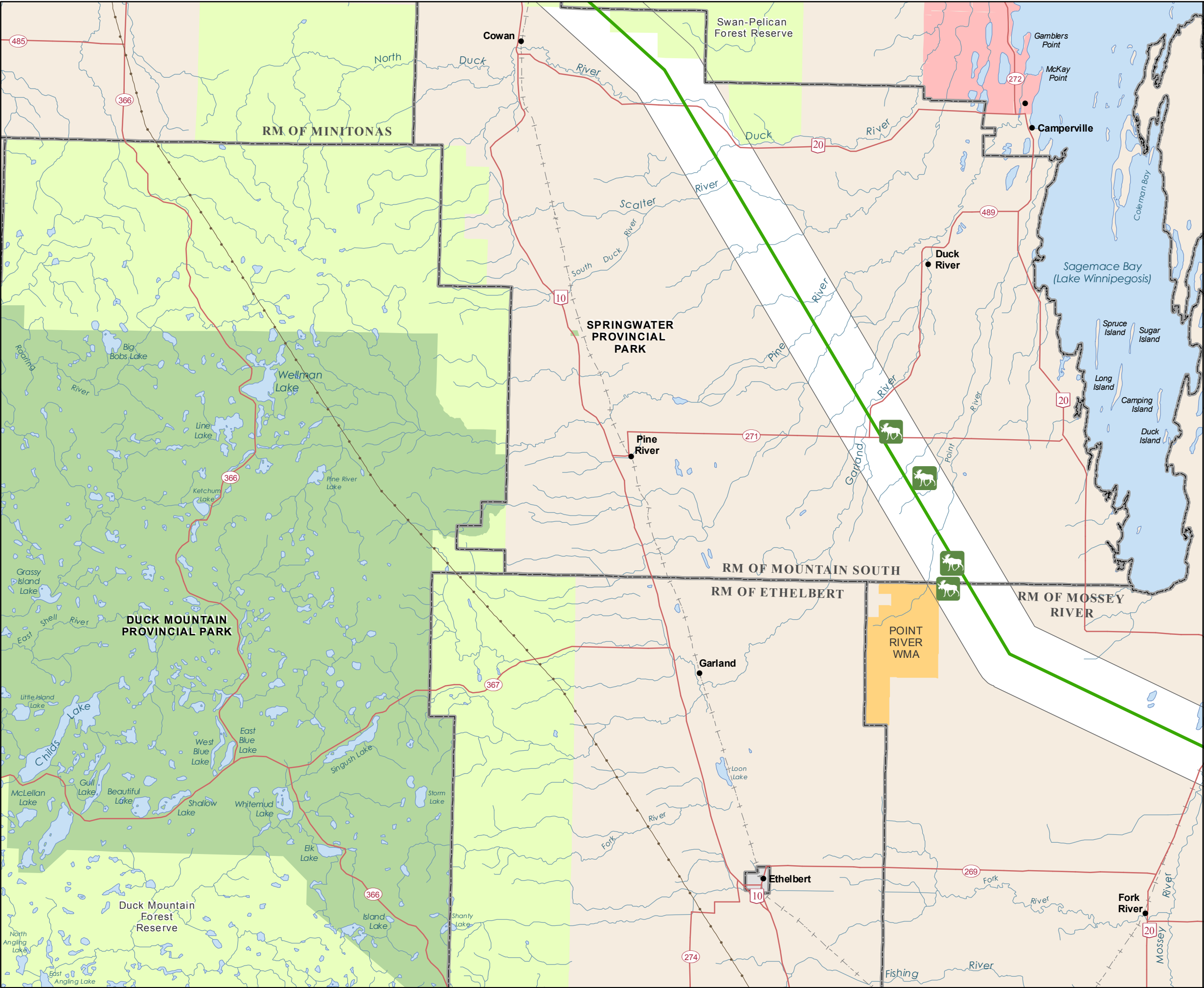
Summer Mammal Tracking
SPECIES
 moos

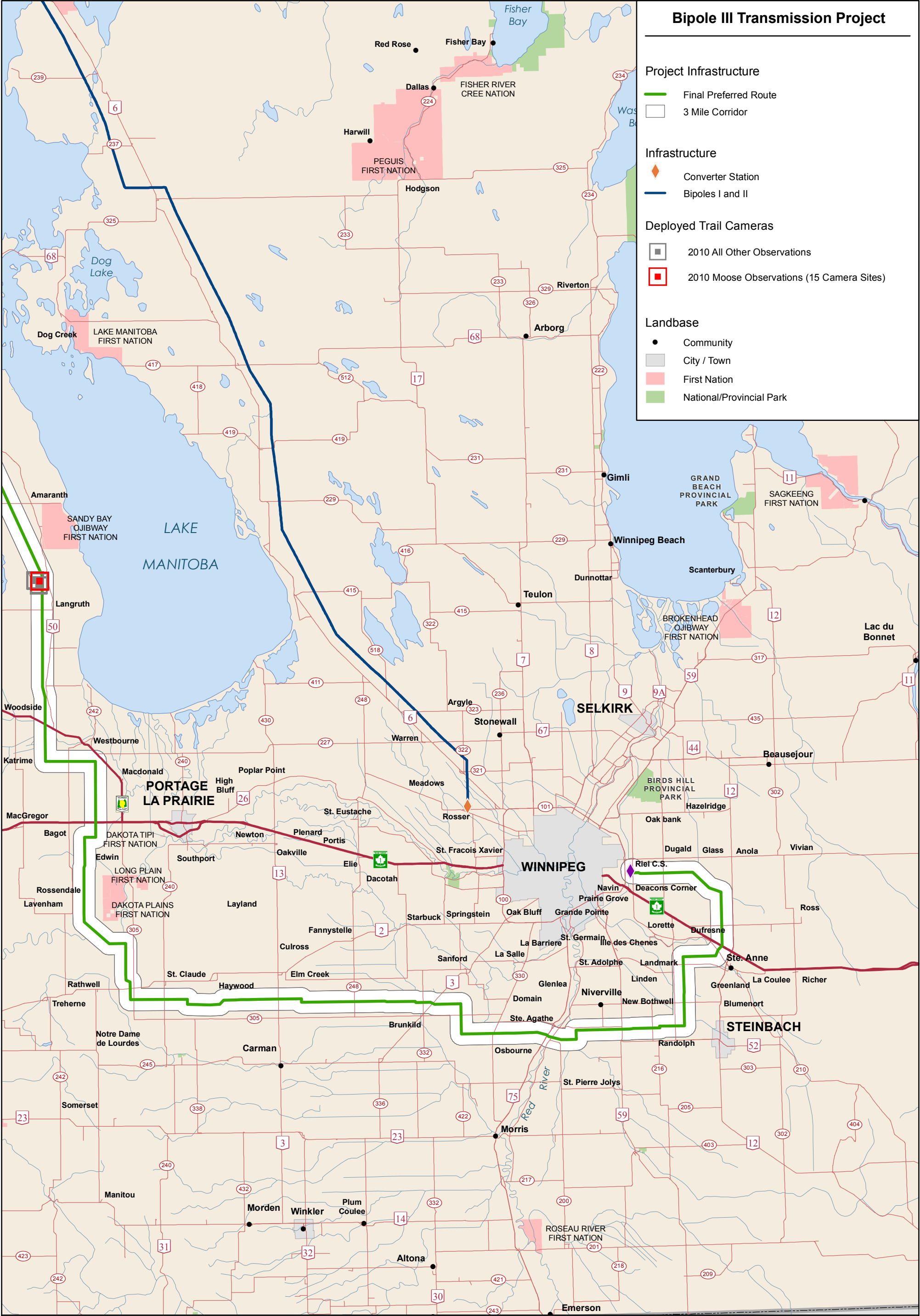
Landbase
 Community
 City / Town
 Rural Municipality
 First Nation
 National/Provincial Park
 Provincial Forest
 Wildlife Management Area

Coordinate System: UTM Zone 14N NAD83
Data Source: MBHydro, MMM, Stantec, ProvMB, NRCAN, WRCS
Date Created: July 13, 2011


 1:250,000

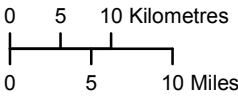
Summer Mammal Tracking

Moose Observations





Coordinate System: UTM Zone 14N NAD83
Data Source: MB Hydro, MMM, ProvMB, Joro, WRCS
Date Created: October 24, 2011



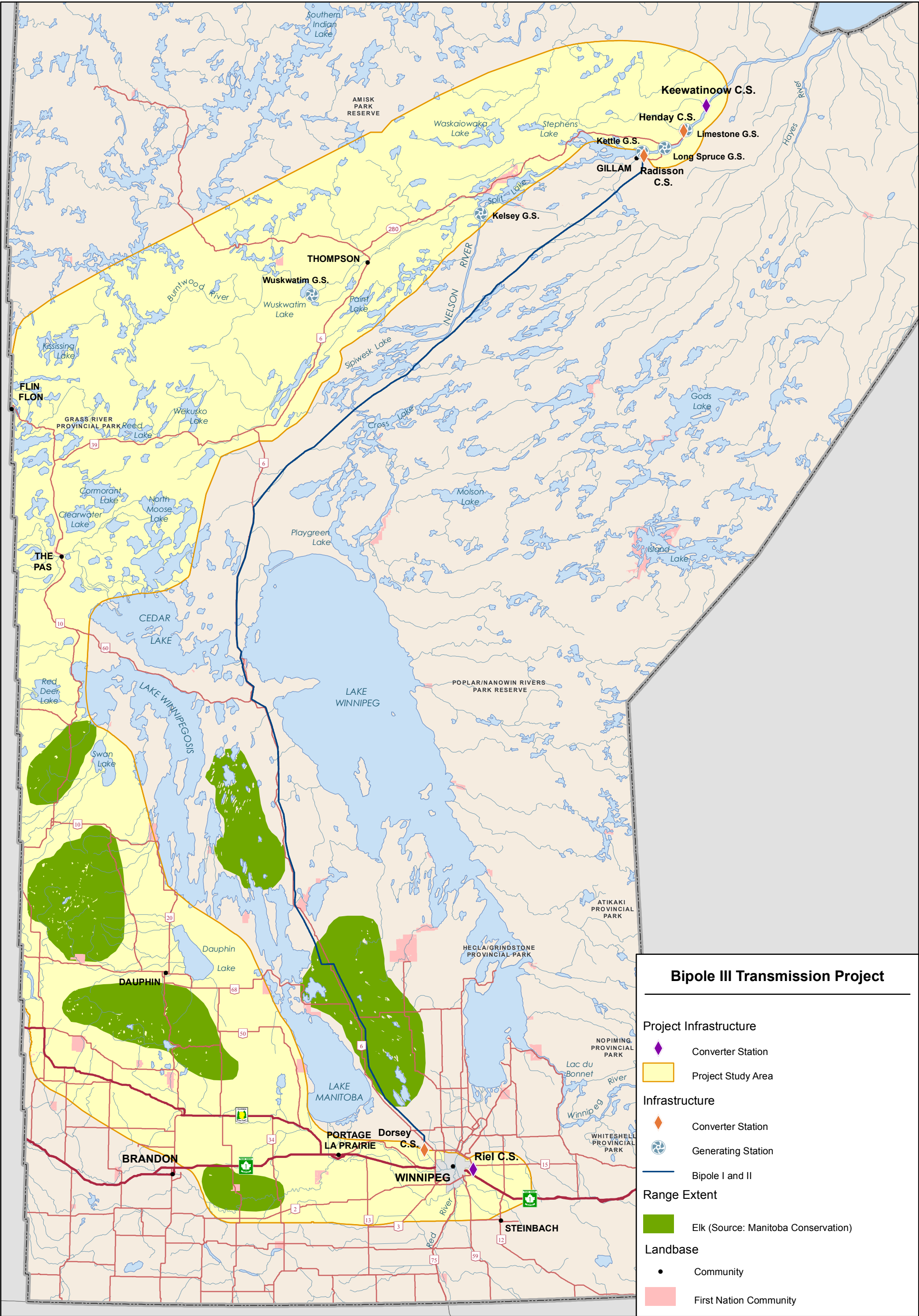
1:750,000

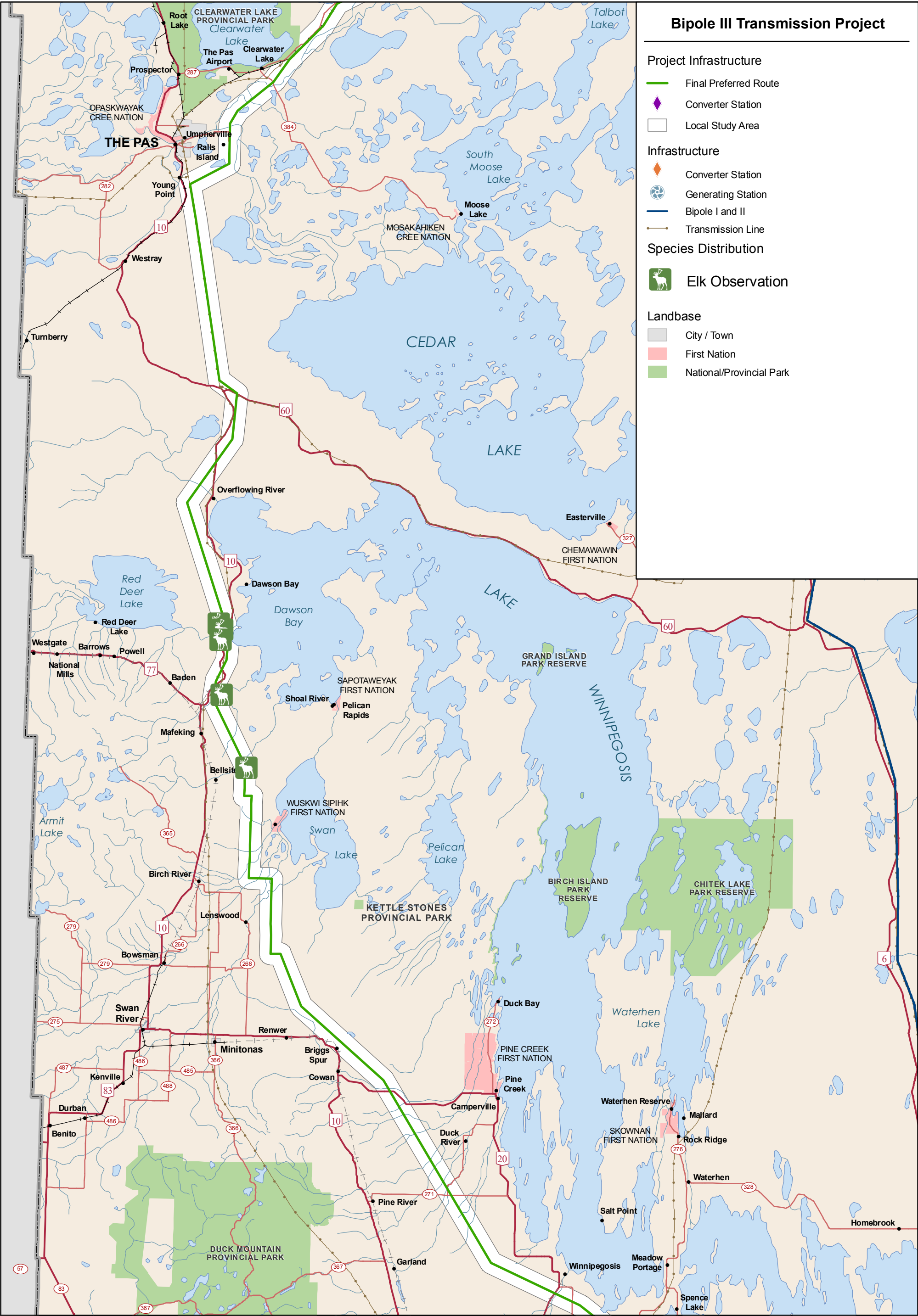


Trail Camera Deployments

Distribution of Moose Observations in 2010

Map Series 700-02





Bipole III Transmission Project

Project Infrastructure
Final Preferred Route

Infrastructure
Transmission Line

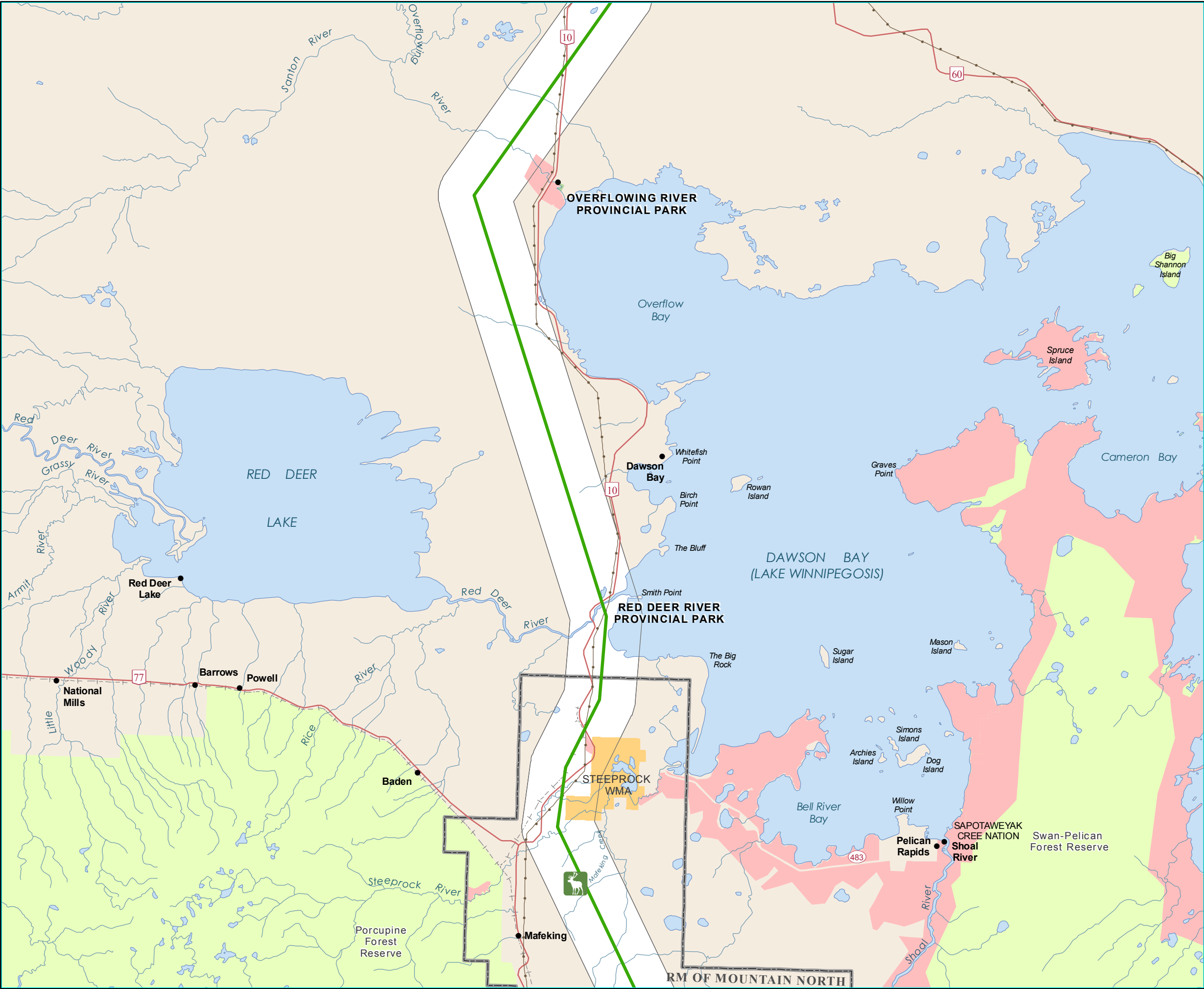
Summer Mammal Tracking
SPECIES
Elk Observation

Landbase
Community
City / Town
Rural Municipality
First Nation
National/Provincial Park
Provincial Forest
Wildlife Management Area

Coordinate System: UTM Zone 14N NAD83
Data Source: MBHydro, MMM, Stantec, ProvMB, NRCAN, WRCS
Date Created: July 13, 2011
0 5 10 Kilometres
0 3 6 Miles
1:250,000

Summer Mammal Tracking

Elk Observations



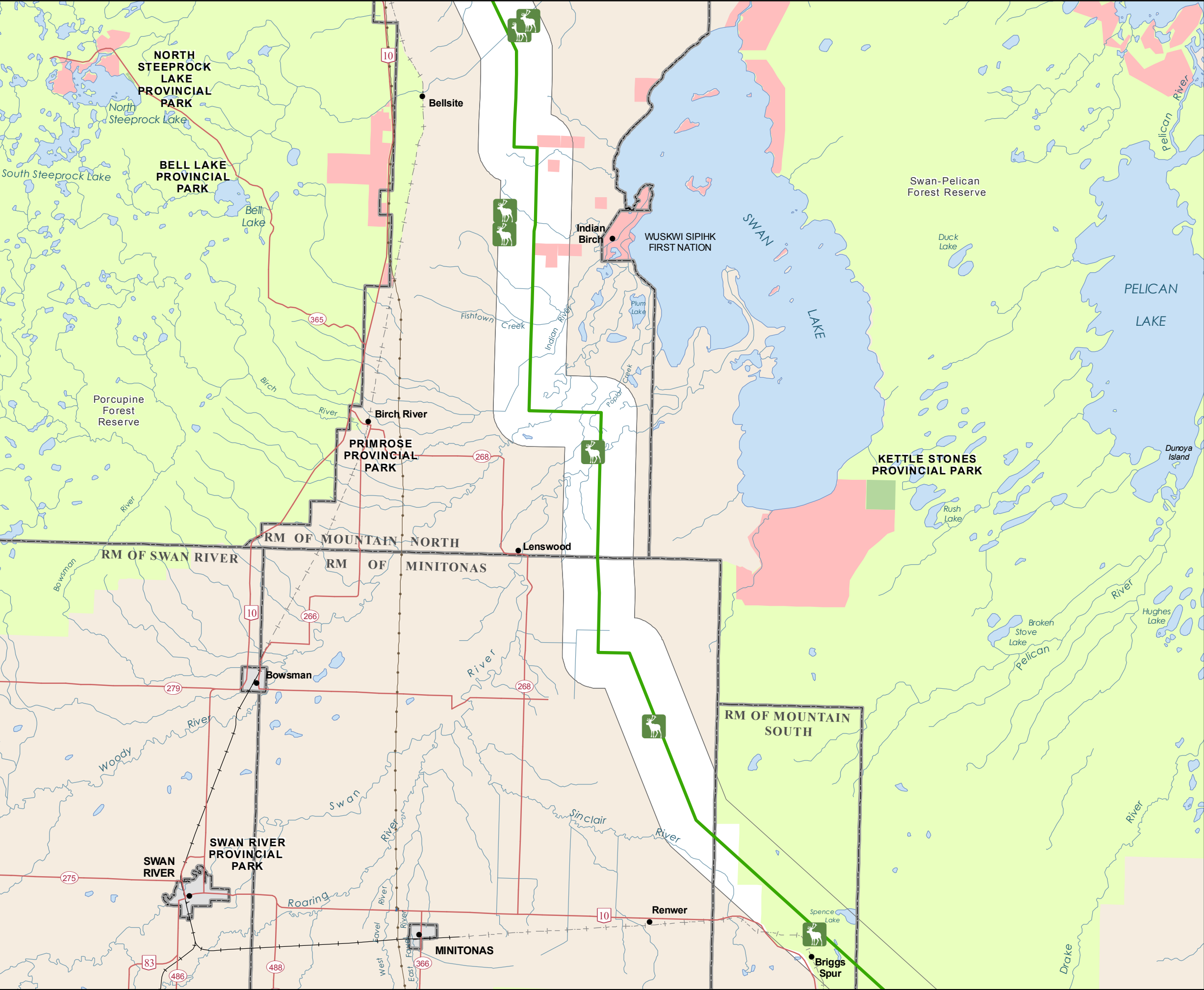
Bipole III Transmission Project

Project Infrastructure
Final Preferred Route

Infrastructure
Transmission Line

Summer Mammal Tracking
SPECIES
Elk Observation

Landbase
Community
City / Town
Rural Municipality
First Nation
National/Provincial Park
Provincial Forest
Wildlife Management Area



Coordinate System: UTM Zone 14N NAD83
Data Source: MBHydro, MMM, Stantec, ProvMB, NRCAN, WRCS
Date Created: July 13, 2011
0 5 10 Kilometres
0 3 6 Miles
1:250,000

Summer Mammal Tracking
Elk Observations

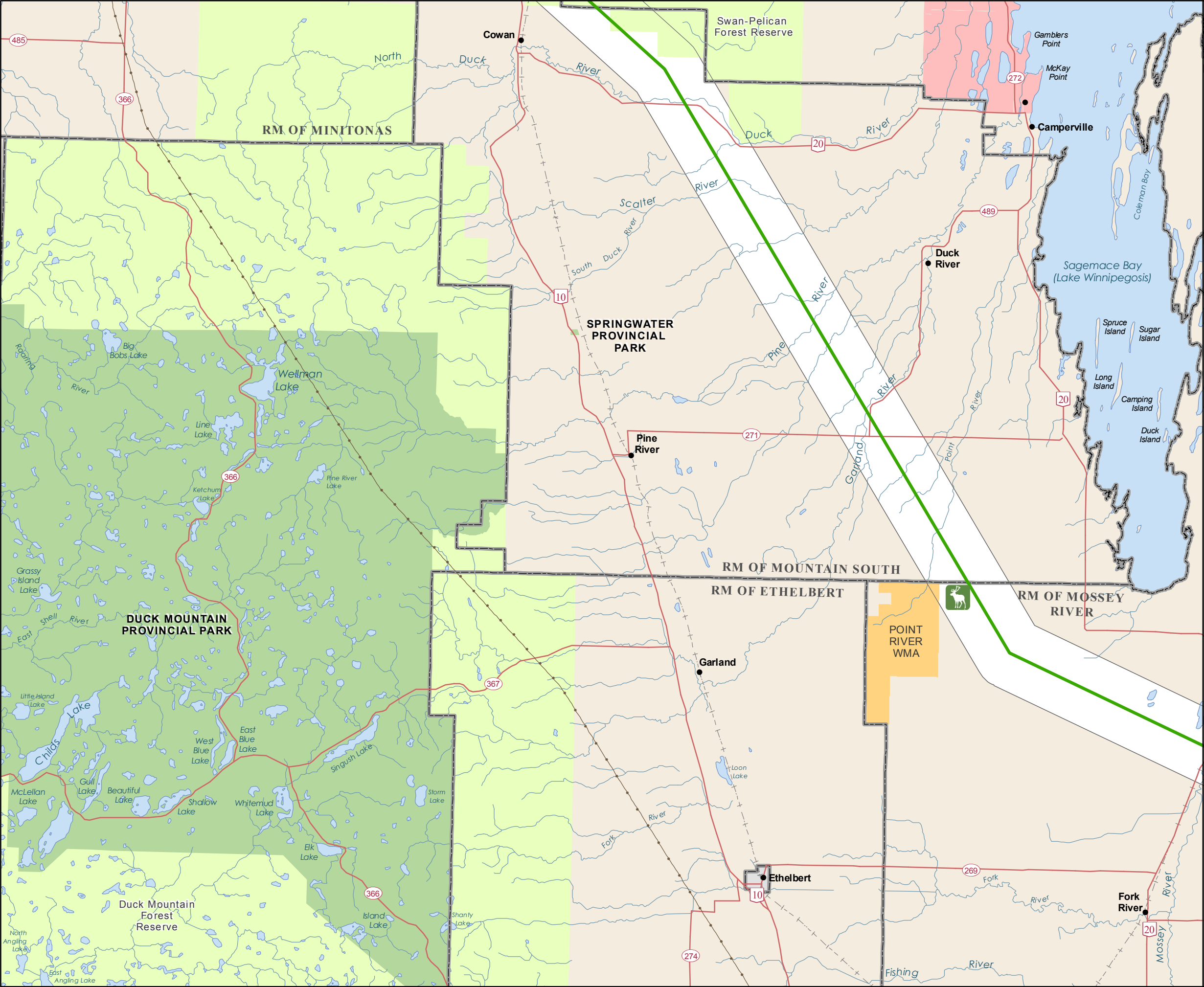
Bipole III Transmission Project

Project Infrastructure
Final Preferred Route

Infrastructure
Transmission Line

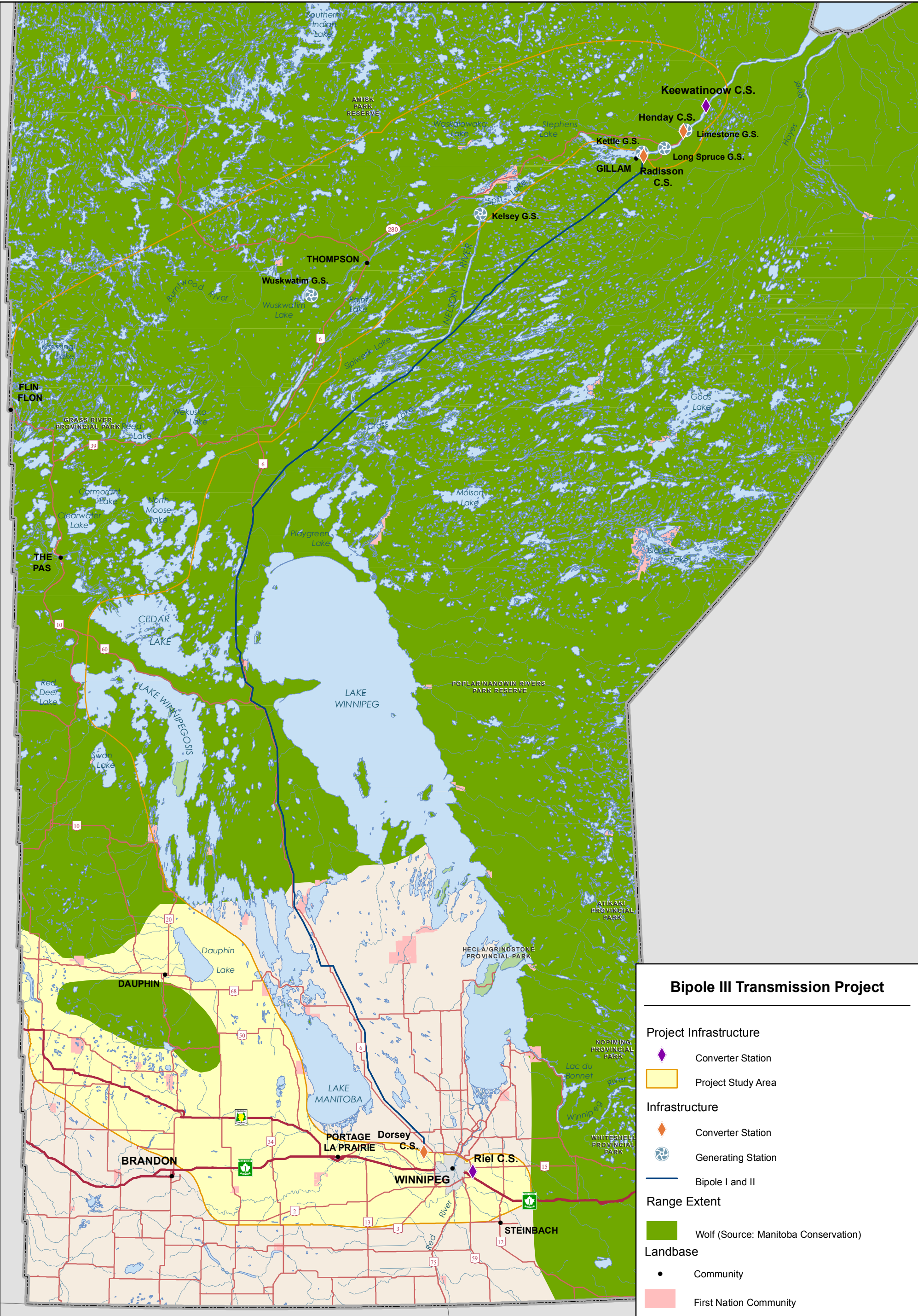
Summer Mammal Tracking
SPECIES
Elk Observation

Landbase
Community
City / Town
Rural Municipality
First Nation
National/Provincial Park
Provincial Forest
Wildlife Management Area



Coordinate System: UTM Zone 14N NAD83
Data Source: MBHydro, MMM, Stantec, ProvMB, NRCAN, WRCS
Date Created: July 13, 2011
0 5 10 Kilometres
0 3 6 Miles
1:250,000

Summer Mammal Tracking
Elk Observations



Coordinate System: UTM Zone 14N NAD83
Data Source: MB Hydro, MMM, Stantec, ProvMB, NRCAN, Joro
Date Created: July 12, 2011

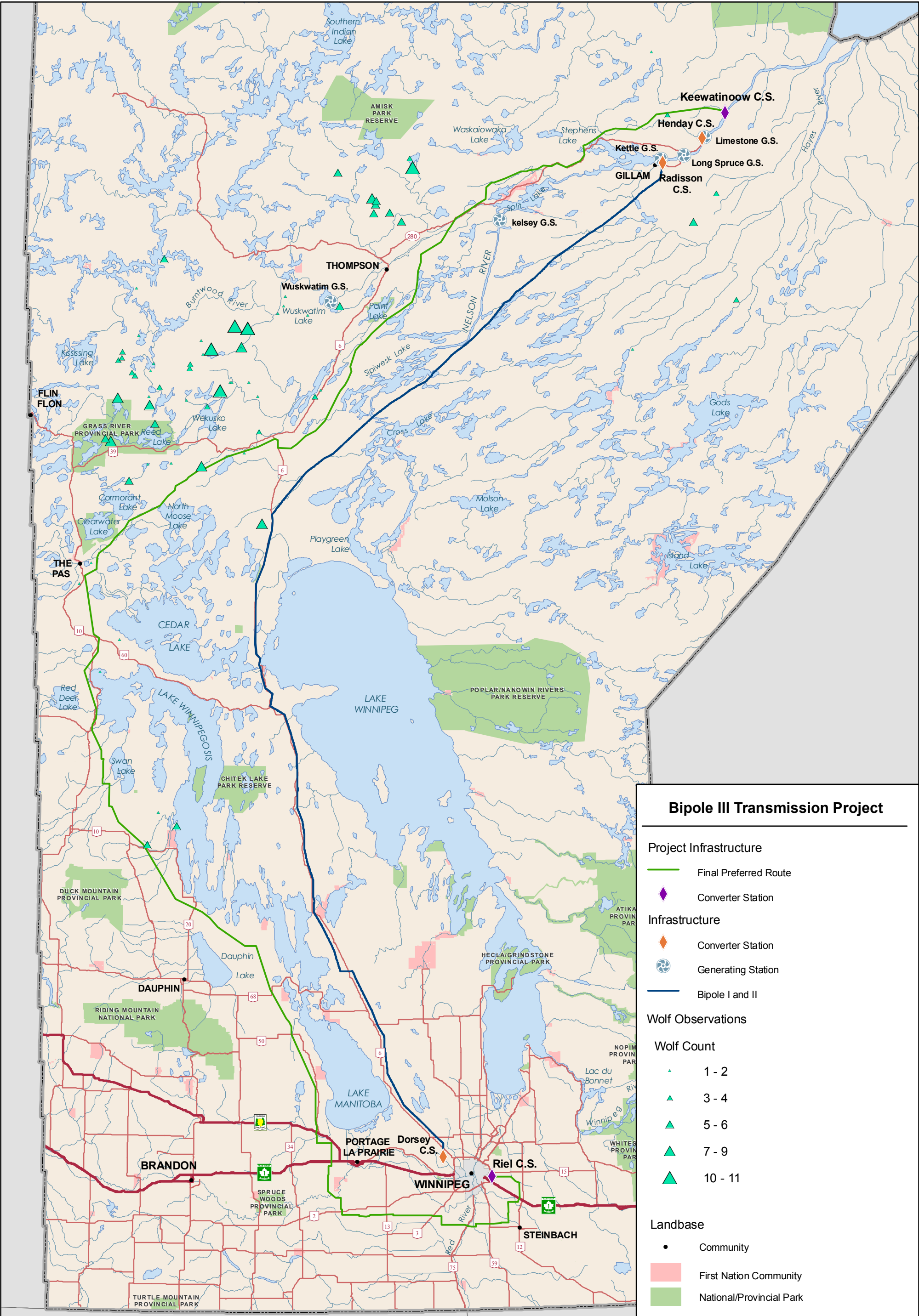
0 25 50 Kilometres

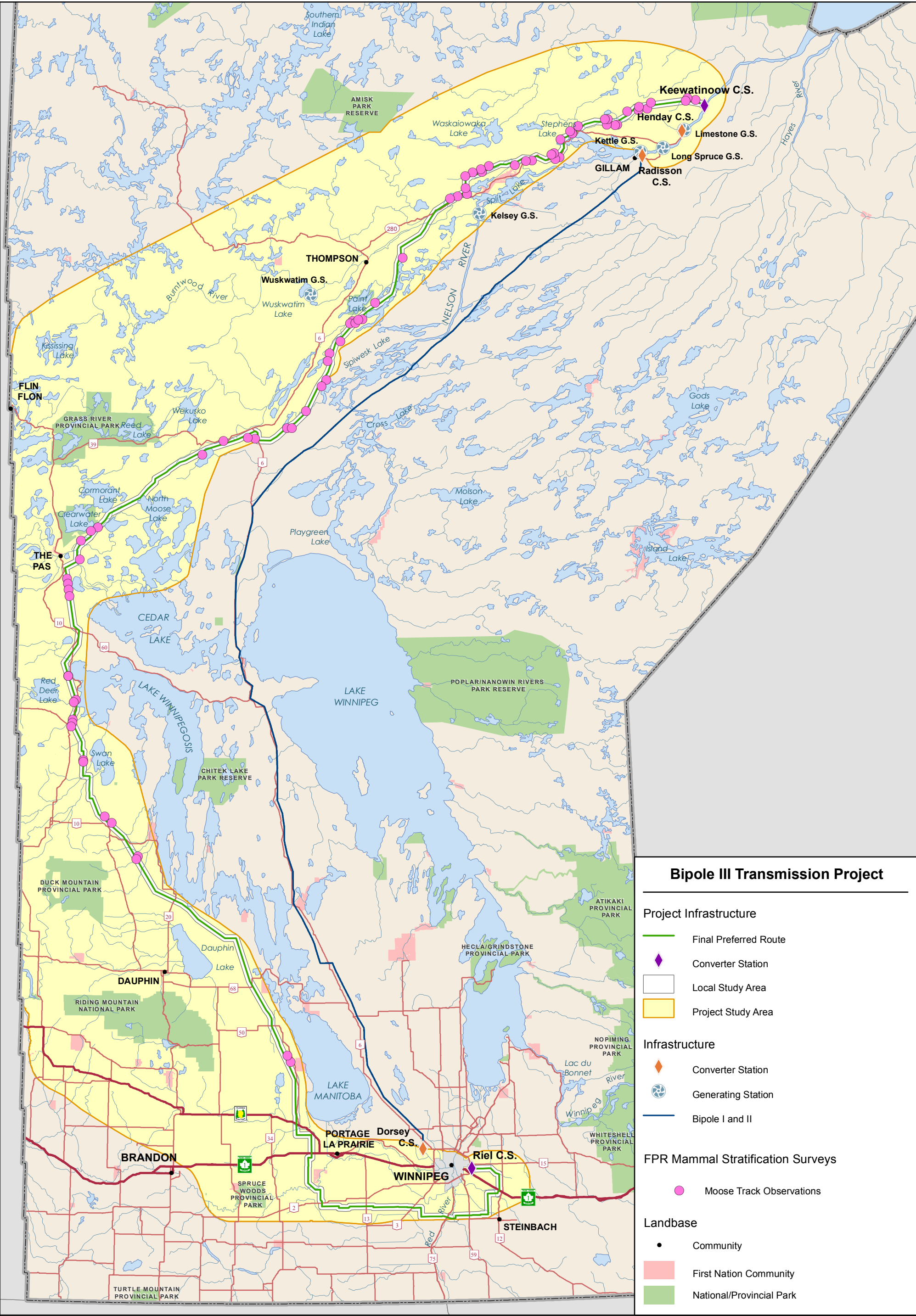
0 25 50 Miles



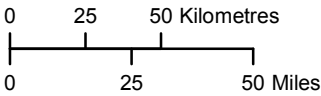
1:2,500,000

Extent of Wolf Range in Manitoba





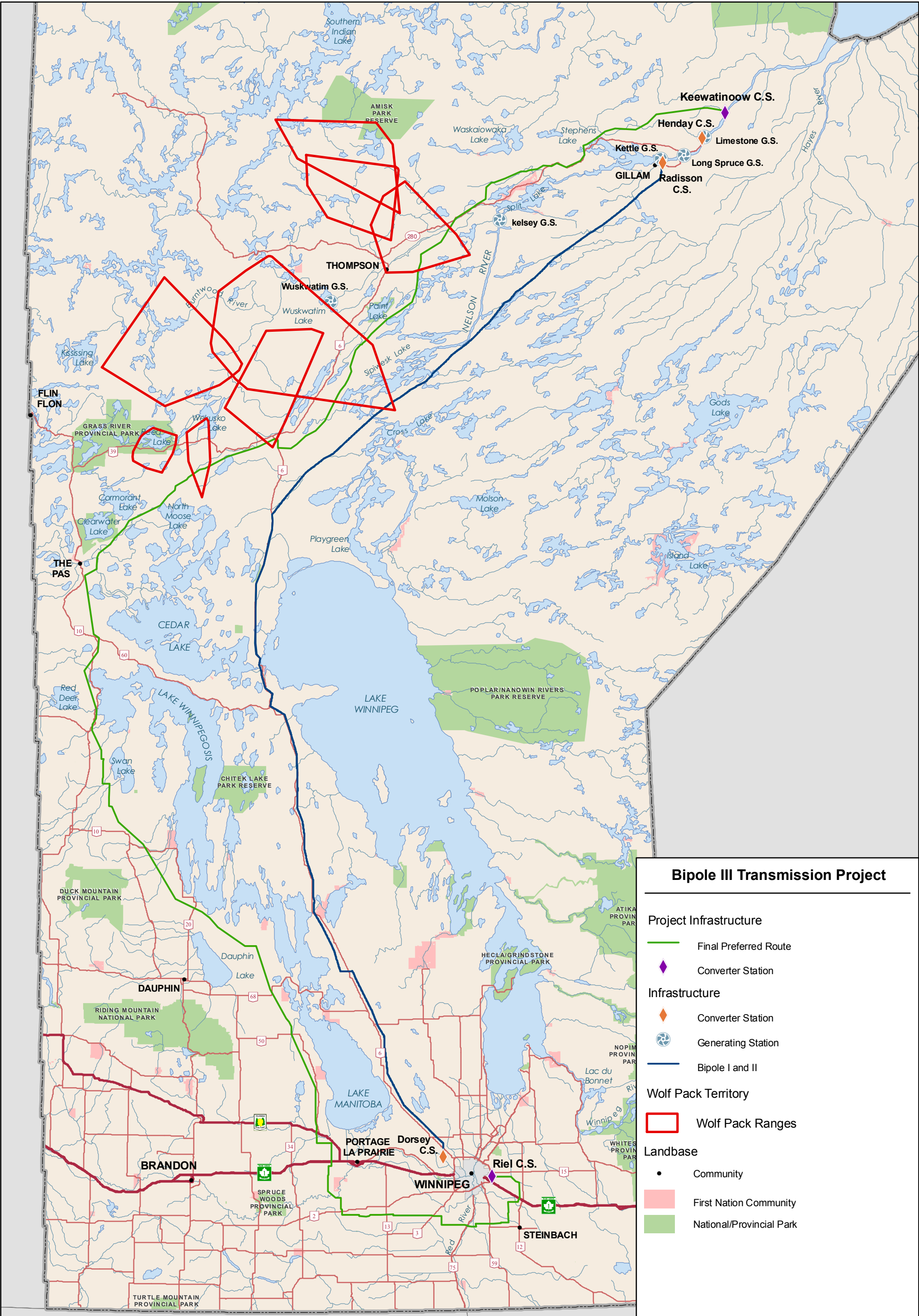
Coordinate System: UTM Zone 14N NAD83
Data Source: MB Hydro, MMM, Stantec, ProvMB, NRCAN
Date Created: June 21, 2011



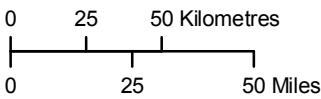
1:2,500,000



Final Preferred Route Mammal Stratification Surveys 2011 Wolf Track Observations



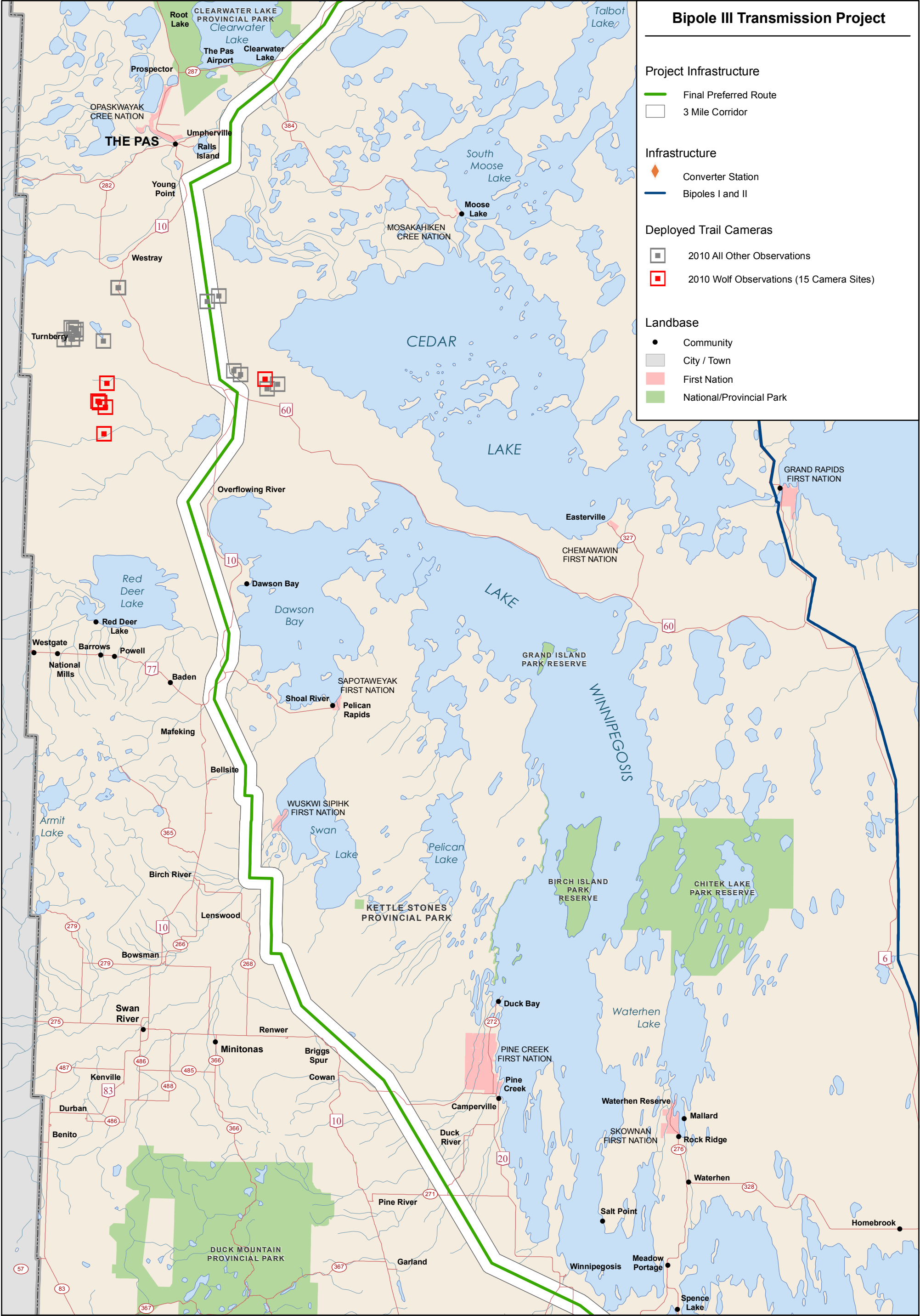
Coordinate System: UTM Zone 14N NAD83
Data Source: MB Hydro, MMM, Stantec, ProvMB, NRCAN, Joro
Date Created: October 24, 2011



1:2,500,000

Wolf Pack Range Delineation

Minimum Convex Polygons From GPS Collar Data



Bipole III Transmission Project

Project Infrastructure

- Final Preferred Route
- 3 Mile Corridor

Infrastructure

- Converter Station
- Bipoles I and II

Deployed Trail Cameras

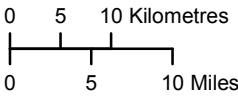
- 2010 All Other Observations
- 2010 Wolf Observations (15 Camera Sites)

Landbase

- Community
- City / Town
- First Nation
- National/Provincial Park



Coordinate System: UTM Zone 14N NAD83
Data Source: MB Hydro, MMM, ProvMB, Joro, WRCS
Date Created: October 24, 2011



1:750,000

Trail Camera Deployments

Distribution of Wolf Observations in 2010

Map Series 900-01

