

Welcome to the Birtle Transmission Project Landowner Information Centre

Purpose of the Landowner Information Centre:

- Provide information about the proposed Birtle Transmission Project.
- Gather feedback on the preferred route.
- Gather information to enhance the environmental assessment work being undertaken.
- Gather local knowledge to assist in determining the final placement of the transmission line.
- Discuss possible mitigation measures to minimize potential impacts.

These boards present an overview of the project. For more detailed information, please see the documents provided and visit the project website: www.hydro.mb.ca/birtle.

Available in accessible formats upon request.

Project Description

- The Birtle Transmission Project includes:
 - Construction of a 230-kV transmission line from Birtle Station to the Manitoba-Saskatchewan border;
 - Minor upgrades at various stations;
 - Tower design – anticipate use of steel lattice towers and “H” frame structures.
 - In-service 2020-2021.
- The preferred route will cross through the RM of Ellice-Archie, RM of Prairie View and the Spy Hill community pasture to connect to Saskatchewan at the preferred border crossing.

Available in accessible formats upon request.

Project Need

- The Birtle Transmission Project is required to:
 - Fulfill a 20-year agreement with SaskPower to sell 100 megawatts (equivalent to powering 40,000 homes) of renewable hydroelectricity.

SaskPower will be responsible for the portion of the transmission line in Saskatchewan that will connect to their station in Tantallon, SK.

Available in accessible formats upon request.

Engagement Process

Round 1 – Fall 2016

- Introduce the project
- Present alternative routes and proposed border crossings
- Answer questions
- Identify and document concerns
- Incorporate feedback into the environmental assessment
- Use feedback to guide selection of preferred route and border crossing

Round 2 – Spring 2017 **WE ARE HERE**

- Present what we heard in Round 1
- Present preferred route to preferred border crossing
- Answer questions
- Identify and document concerns
- Incorporate feedback into the environmental assessment
- Use feedback to assist in determining final route placement

Available in accessible formats upon request.

What We Heard

Feedback from participants	How was the feedback considered?
“The transmission line will impact agricultural operations.”	Manitoba Hydro avoided half-mile (quarter section) alignments where possible and followed existing mile lines and road rights-of-way when available. Tower design and placement will also assist in reducing potential agricultural impact.
“There will be a loss of productive farm land.”	Based on feedback, the line will be routed adjacent to road allowances, where possible, to reduce potential agricultural impacts. Class of land and current land use were considered in determining a preferred route for the Project.
“Routing through the southern Community Pasture (Ellice-Archie) should be considered.”	A route through the southern community pasture was evaluated in the route selection process but was not selected as the preferred route.
“Follow existing infrastructure.”	Participants identified existing corridors and linear features as possible routing opportunities and they were incorporated where possible.
“Homes should be avoided as much as possible.”	Proximity to homes is a consideration in the transmission line routing process. The current route has eight homes between 100-400 metres from the line.
“Natural and recreation areas are important to my community.”	Participants outlined many areas for recreational use in the area and they were considered when determining a preferred route for the Project. Manitoba Hydro will identify sensitive sites and will consider specific mitigation or construction scheduling to minimize potential effects on natural areas.
“Stay out of natural, intact wilderness.”	Manitoba Hydro considered the intactness of the area when selecting the preferred route.

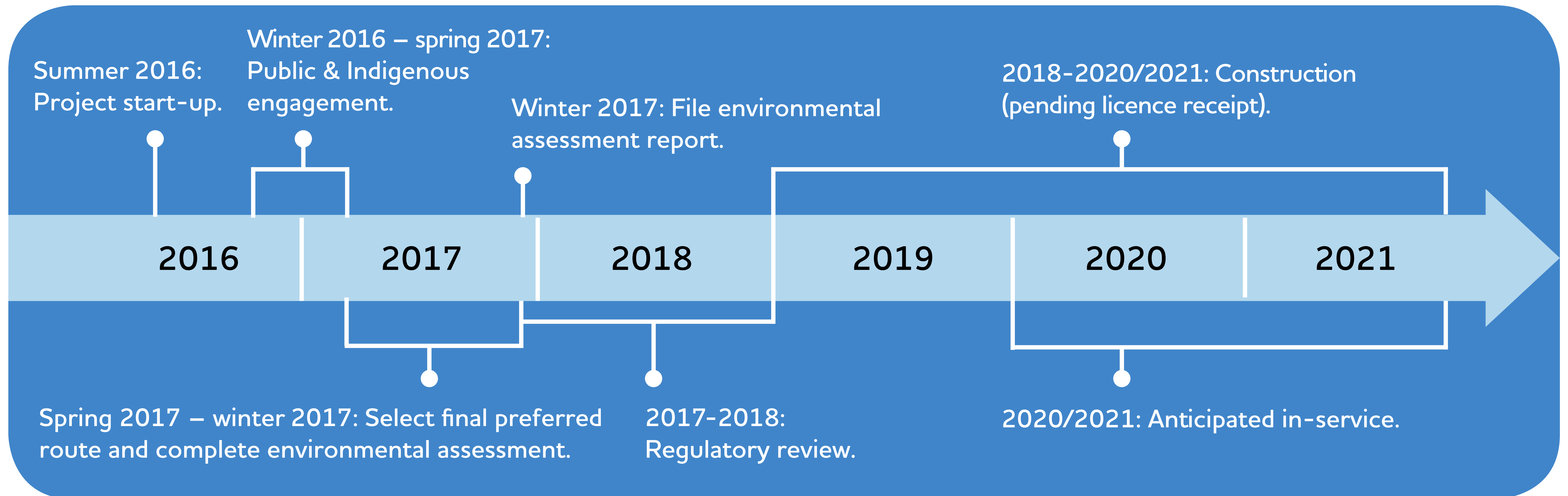
Available in accessible formats upon request.

What We Heard (continued)

Feedback from participants	How was the feedback considered?
“Will this project affect water?”	Surface and groundwater quality will not be degraded. The project will use buffers and setbacks, erosion and sedimentation control measures as well as stream crossing measures.
“Stay off of Crown lands.”	A preference Manitoba Hydro often heard was for the route to be located on Crown lands, whereas this routing option was raised as a concern from First Nations, the MMF and other stakeholders. The preferred route aims to balance different interests on the landscape.
“Cultural and burial heritage sites are important and should be avoided.”	<p>Manitoba Hydro acknowledges the need for careful protection and respect for culture and heritage resources and implements a number of measures to safeguard these resources.</p> <p>A Cultural and Heritage Resources Protection Plan will be developed that describes processes and protocols to protect discovered cultural and heritage resources during construction.</p>
“Native grasslands and grassland birds are very important. Priority species to be considered include Sprague’s Pipit and the Chestnut Collared Longspurs.”	Manitoba Hydro will continue to consider native grassland and grassland bird species in route refinement, the environmental assessment, and mitigation planning.

Available in accessible formats upon request.

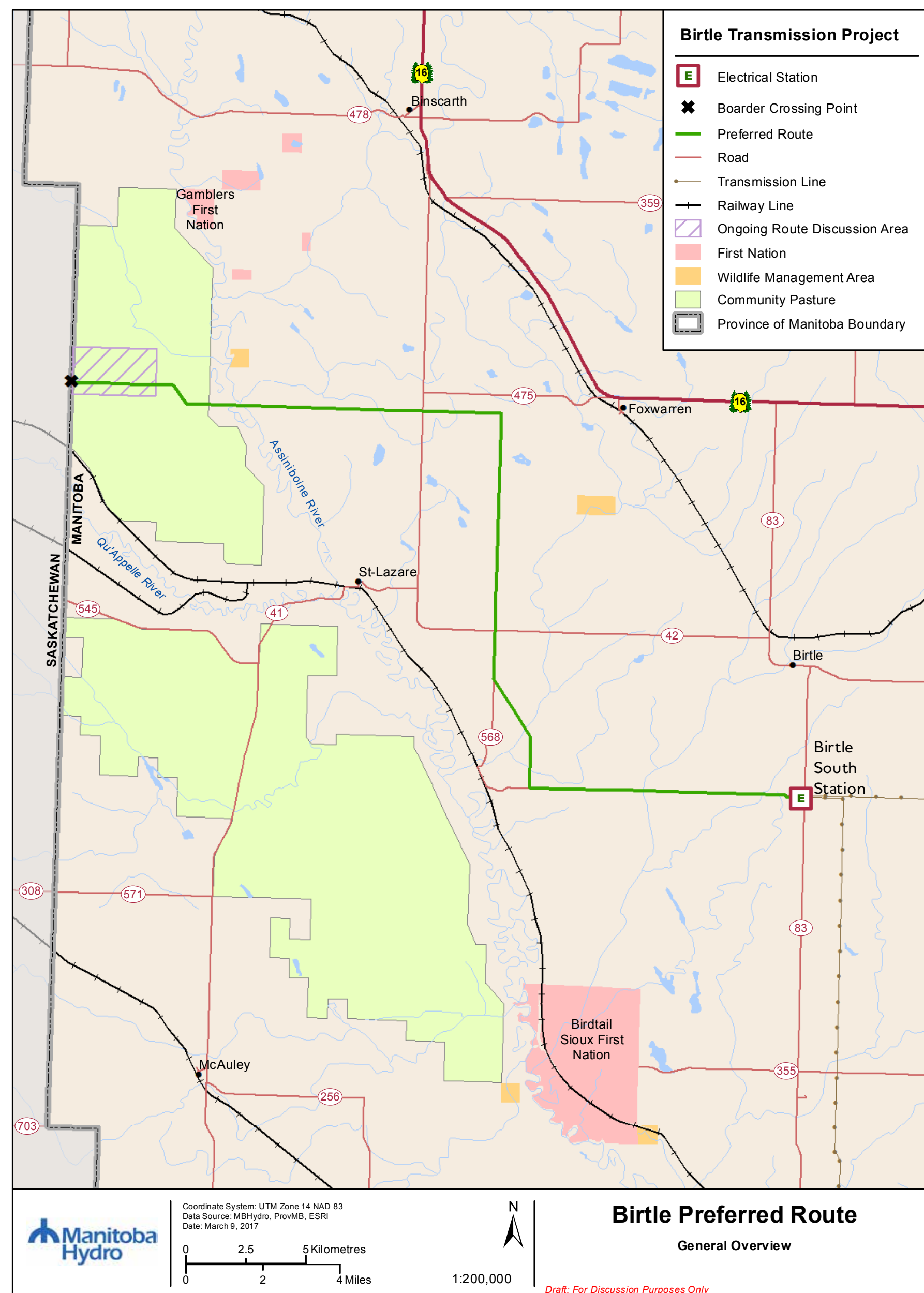
Anticipated Project Timeline



The schedule is subject to change as we progress through the routing and environmental assessment processes.

Available in accessible formats upon request.

Preferred Route



- During the first round of engagement, a number of alternative segments and a north and south border crossing were presented.
- Feedback was collected from participants and study team specialists.
- Routes to each border crossing were evaluated and compared.
- Based on feedback received through the engagement and environmental assessment processes, a preferred route has been determined.

This preferred route aims to balance different interests on the landscape.

Available in accessible formats upon request.

Next Steps

- Review input from the public engagement and the environmental assessment processes.
- Determine a Final Preferred Route.
- Complete and submit the Environmental Assessment Report.
- Continue to answer questions and address concerns.

Available in accessible formats upon request.

Thank you

The project team wants to hear from you.

For more information about the Birtle Transmission Project and to sign up for email notices, please visit **www.hydro.mb.ca/birtle**.

If you would like further information please contact us at **LEAprojects@hydro.mb.ca** or call **1-877-343-1631**.

Available in accessible formats upon request.

