

Manitoba-Minnesota Transmission Project

Project Infrastructure

- Preferred Route
- Project Development Area

Infrastructure

- D602F (Existing 500 kV Transmission Line)
- Existing 115-230kV Transmission Line

Landbase

- Community
- Trans Canada Highway
- Provincial Highway
- Provincial Road
- Railway
- City / Town
- First Nation Lands
- Rural Municipality
- Ecological Reserve
- Wildlife Management Area
- Provincial Park

Coordinate System: UTM Zone 14N NAD83
Data Source: MBHydro, ProvMB, NRCAN
Date Created: January 13, 2015



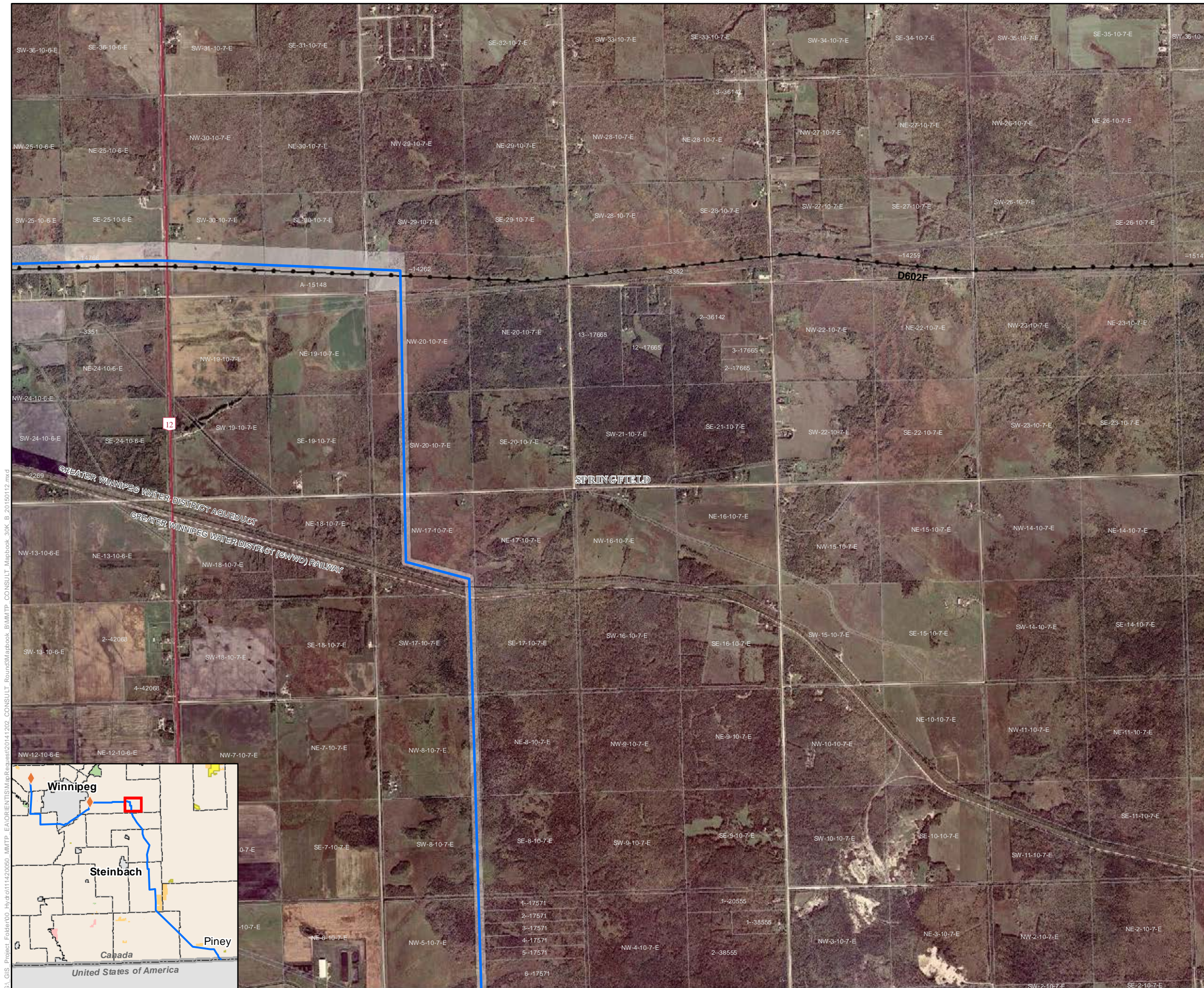
0 0.5 1 Kilometres
0 0.25 0.5 Miles

1:30,000

Preferred Route

Draft: For Discussion Purposes Only

Map 100-10



G:\GIS\Project_Folder\005_Hydro\111420050_MWTP_EA\ORIENT\GIS\Mapbook\014202_CONSULT_Round3\Mapbook_BIMWTP_CONSULT_Mapbook_30K_B_20150112.mxd