

## Manitoba-Minnesota Transmission Project

### Project Infrastructure

- Preferred Route
- Project Development Area

### Infrastructure

- Existing 115-230kV Transmission Line

### Landbase

- Community
- Trans Canada Highway
- Provincial Highway
- Provincial Road
- Railway
- City / Town
- First Nation Lands
- Rural Municipality
- Ecological Reserve
- Wildlife Management Area
- Provincial Park

Coordinate System: UTM Zone 14N NAD83  
Data Source: MBHydro, ProvMB, NRCAN  
Date Created: January 13, 2015



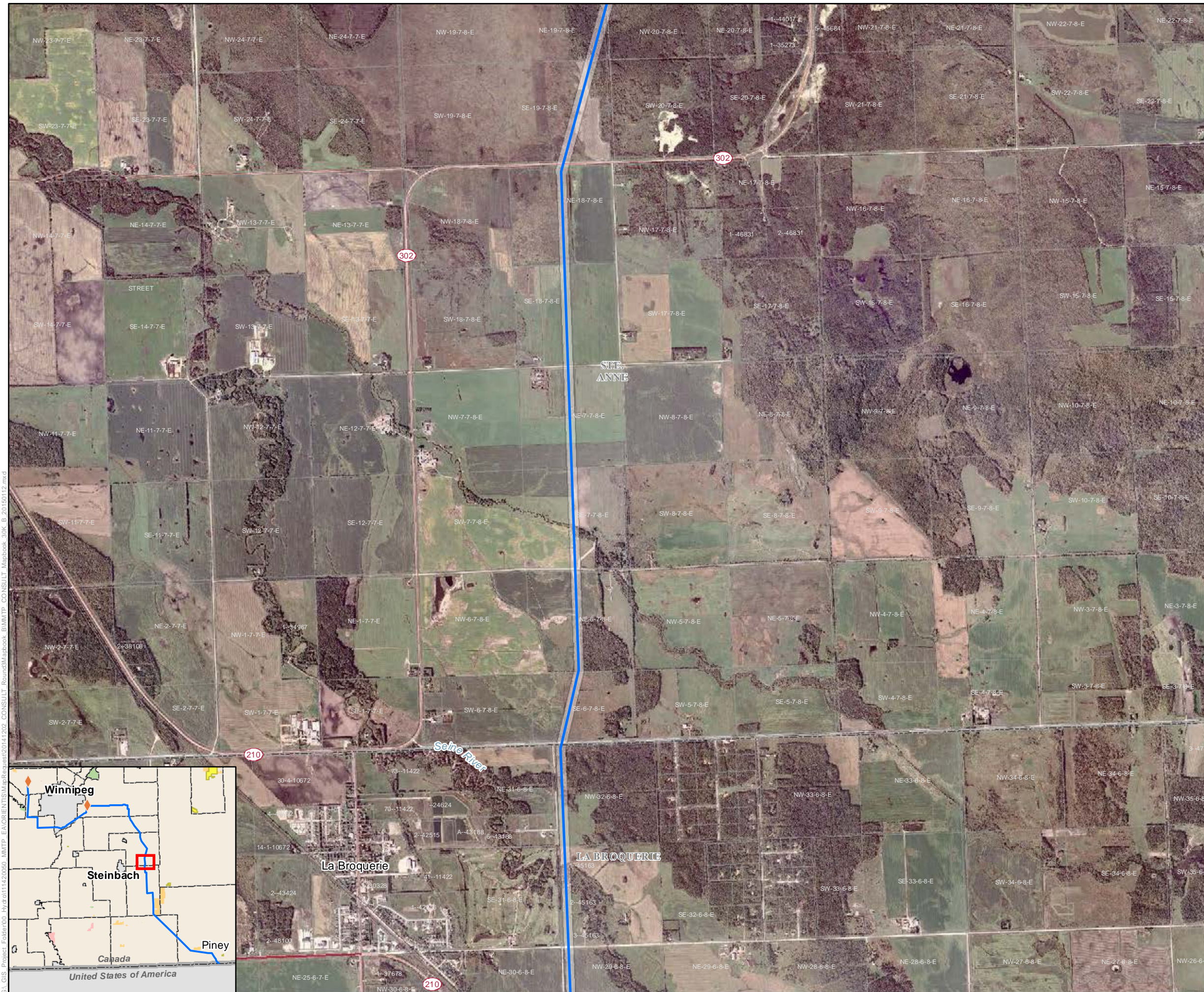
0 0.5 1 Kilometres  
0 0.25 0.5 Miles

1:30,000

### Preferred Route

*Draft: For Discussion Purposes Only*

Map 100-14



G:\GIS\Project\_Folder\005\_Hydro\111420305\_MWTP\_EA\ORIENT\GIS\Mapbook\2014\202\_CONSULT\_Round3\Mapbook\_BIMWTP\_CONSULT\_Mapbook\_30k\_B\_20150112.mxd