

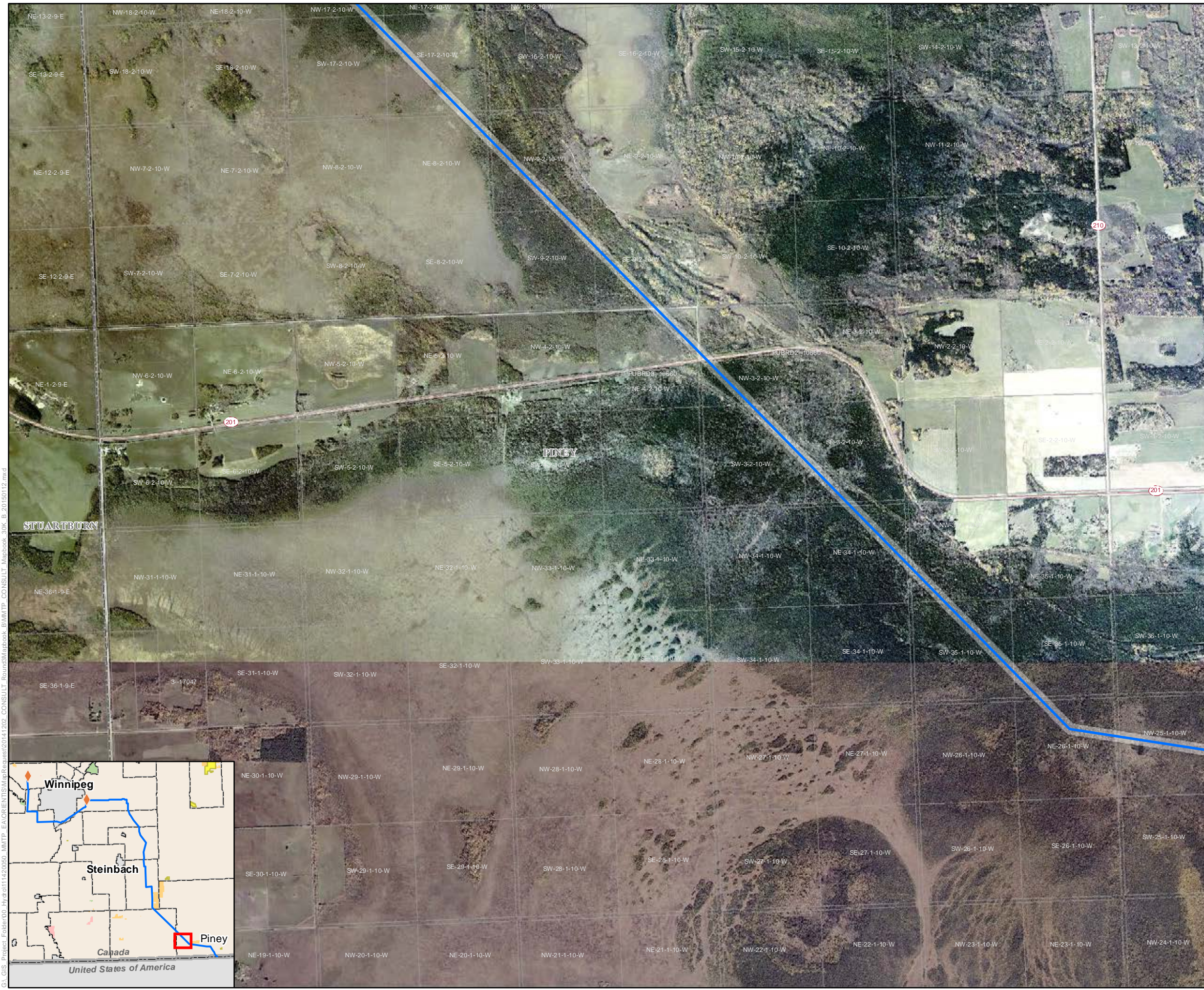
Manitoba-Minnesota Transmission Project

Project Infrastructure

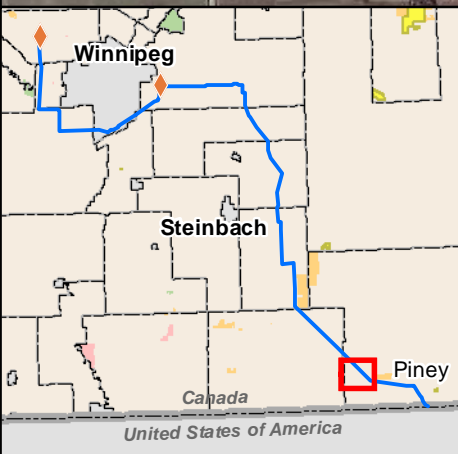
- Preferred Route
- Project Development Area

Landbase

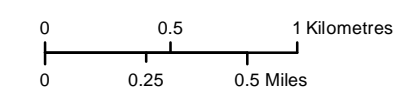
- Community
- Trans Canada Highway
- Provincial Highway
- Provincial Road
- Railway
- City / Town
- First Nation Lands
- Rural Municipality
- Ecological Reserve
- Wildlife Management Area
- Provincial Park



G:\GIS\Project_Folder\005_Hydro\1114203050_1M\ITP_EA\ORIENTISM\Map\Res\2014\202_CONSULT_Round3\Mapbook_BIM\ITP_CONSULT_Mapbook_30K_B_20150112.mxd



Coordinate System: UTM Zone 14N NAD83
Data Source: MBHydro, ProvMB, NRCAN
Date Created: January 13, 2015



1:30,000

Preferred Route

Draft: For Discussion Purposes Only