

## Manitoba-Minnesota Transmission Project

### Project Infrastructure

- Preferred Route
- Project Development Area

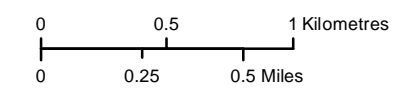
### Infrastructure

- St. Vital Transmission Complex (Proposed)
- Existing 115-230kV Transmission Line

### Landbase

- Community
- Trans Canada Highway
- Provincial Highway
- Provincial Road
- Railway
- City / Town
- First Nation Lands
- Rural Municipality
- Ecological Reserve
- Wildlife Management Area
- Provincial Park

Coordinate System: UTM Zone 14N NAD83  
 Data Source: MBHydro, ProvMB, NRCAN  
 Date Created: January 13, 2015

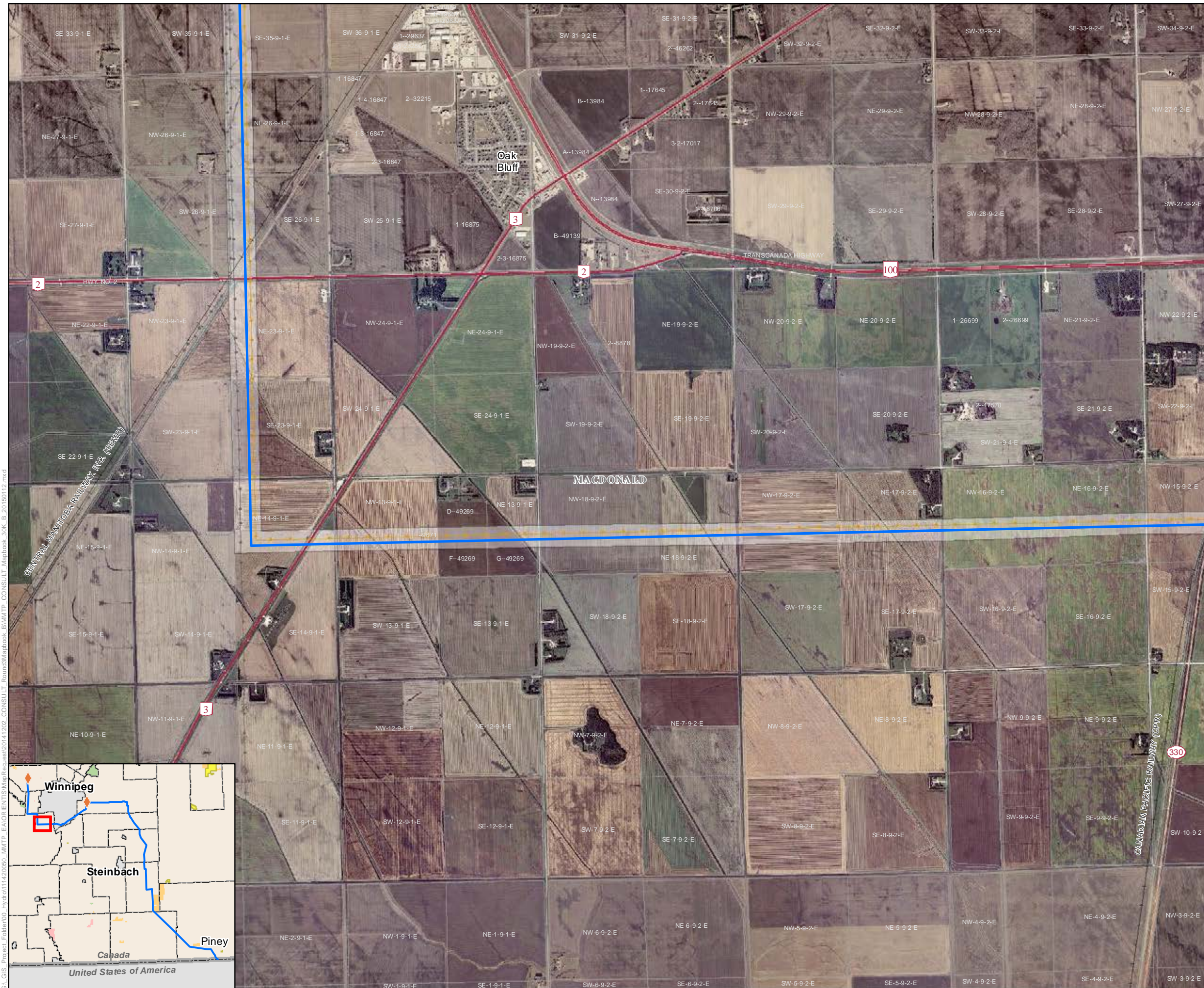


1:30,000

### Preferred Route

*Draft: For Discussion Purposes Only*

Map 100-04



G:\GIS\Project\_Folder\00\_Hydro\111420000\_MMTP\_EAGRE\ENR\GIS\Mapbook\2014\202\_CONSULT\_Round3\Mapbook\_BIM\TP\_CONSULT\_Mapbook\_30K\_B\_20150112.mxd

