

Manitoba-Minnesota Transmission Project

Project Infrastructure

- Preferred Route
- Project Development Area

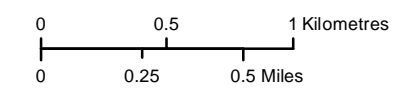
Infrastructure

- D602F (Existing 500 kV Transmission Line)
- Bipole III Transmission Line (Approved)
- Existing 115-230kV Transmission Line

Landbase

- Community
- Trans Canada Highway
- Provincial Highway
- Provincial Road
- Railway
- City / Town
- First Nation Lands
- Rural Municipality
- Ecological Reserve
- Wildlife Management Area
- Provincial Park

Coordinate System: UTM Zone 14N NAD83
 Data Source: MBHydro, ProvMB, NRCAN
 Date Created: January 13, 2015

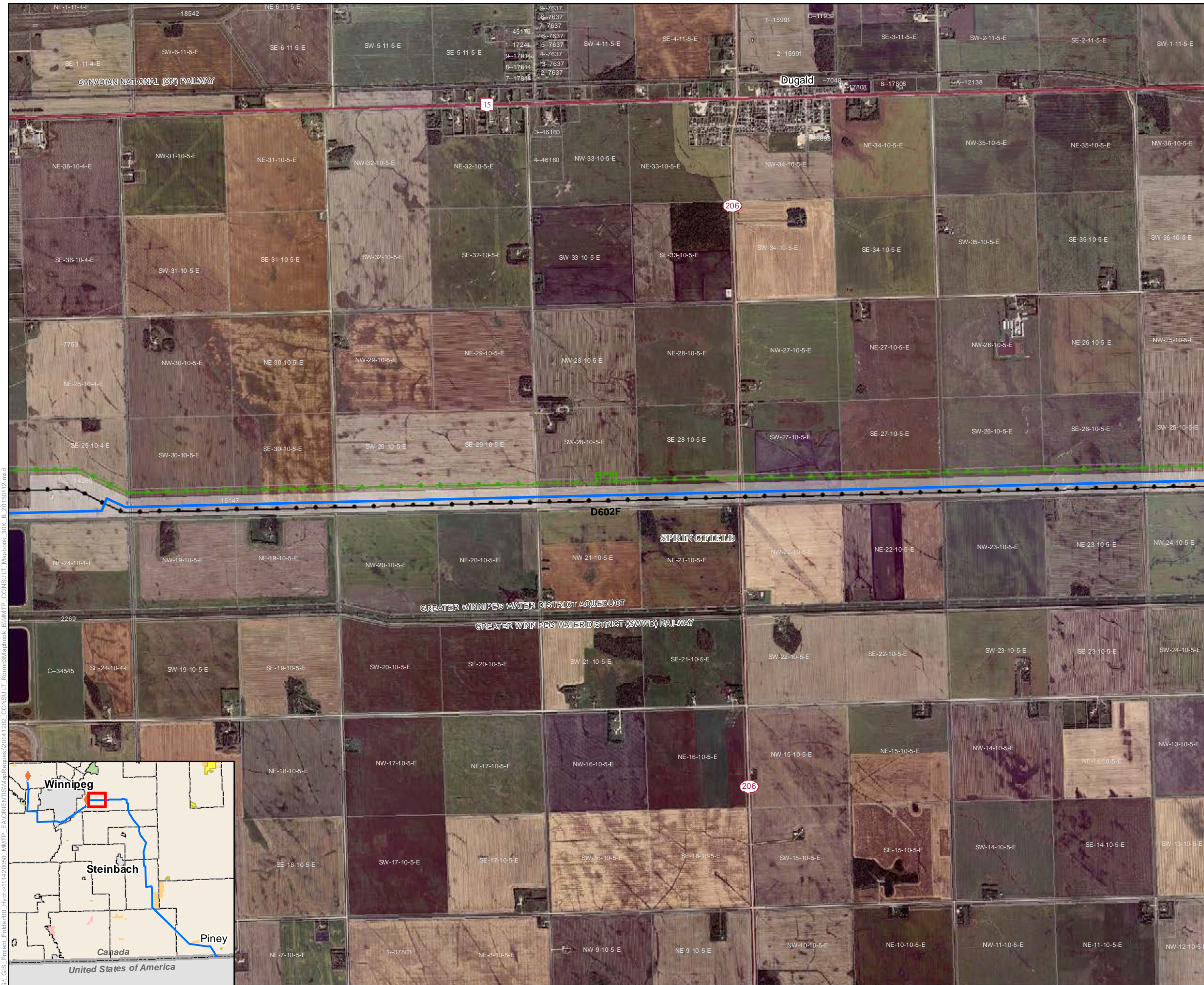


1:30,000

Preferred Route

Draft: For Discussion Purposes Only

Map 100-08



G:\GIS\Project_Folder005_Hydro\111420050 - MWTP - EA\ORIENTISM\Map\Res\2014\202 - CONSULT - Round\Mapbook - BIM\MT - CONSULT - Mapbook - 30k - B_20150112.mxd