

Manitoba-Minnesota Transmission Project

Project Infrastructure

- Preferred Route
- Project Development Area

Infrastructure

- D602F (Existing 500 kV Transmission Line)
- Bipole III Transmission Line (Approved)
- Existing 115-230kV Transmission Line

Landbase

- Community
- Trans Canada Highway
- Provincial Highway
- Provincial Road
- Railway
- City / Town
- First Nation Lands
- Rural Municipality
- Ecological Reserve
- Wildlife Management Area
- Provincial Park

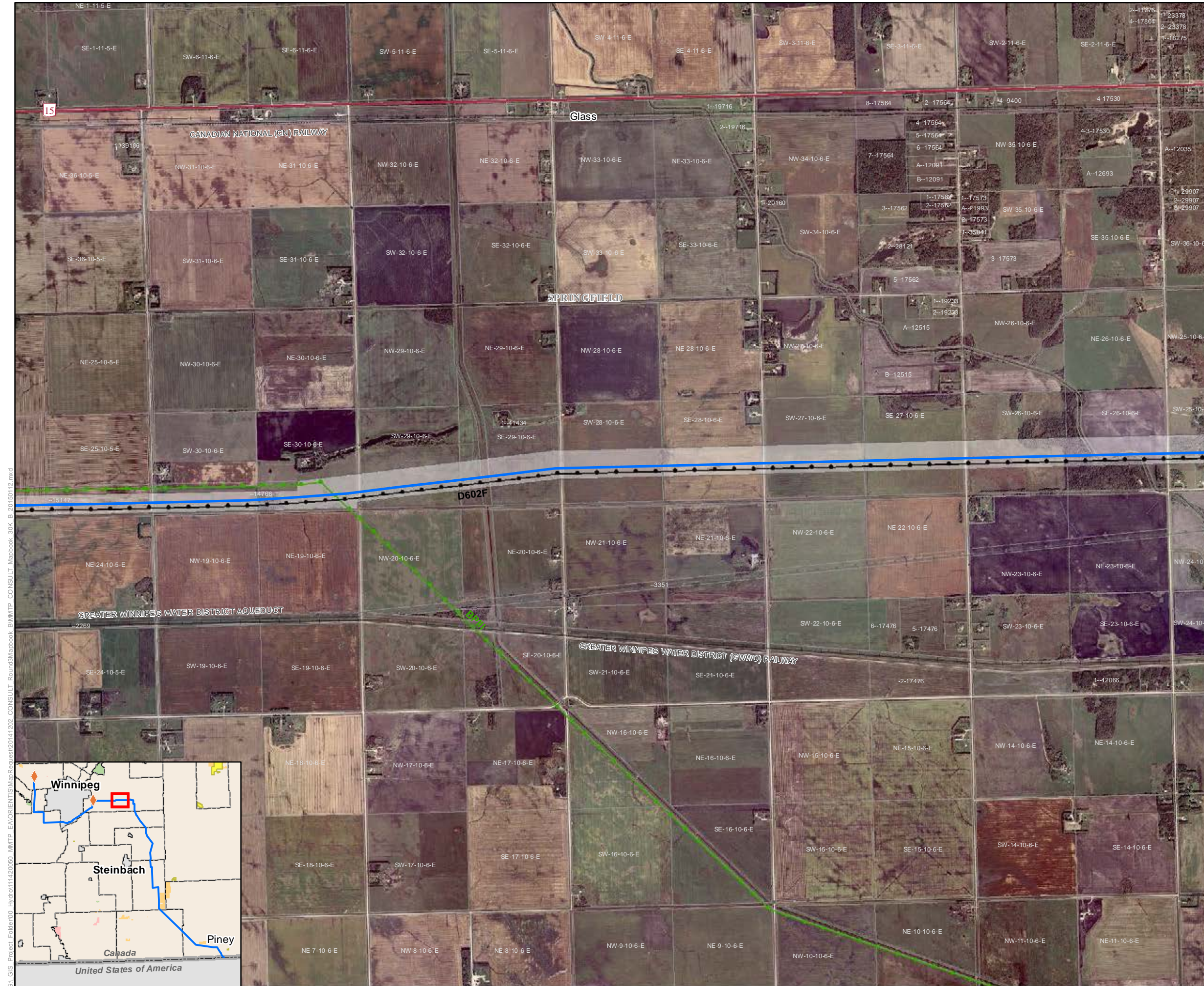
Coordinate System: UTM Zone 14N NAD83
 Data Source: MBHydro, ProvMB, NRCAN
 Date Created: January 13, 2015



0 0.5 1 Kilometres
 0 0.25 0.5 Miles

1:30,000

Preferred Route



G:\GIS\Project_Folder\00_Hydro\1142\0000_11M\1TP_EA\ORIENTISM\spResArea\2014\202_CONSULT_Round3\Mapbook_BIM\1TP_CO\CONSULT_Mapbook_30K_B_20150112.mxd

