

REPORT TO THE PUBLIC UTILITIES BOARD

SURPLUS ENERGY PROGRAM

NOVEMBER 1, 2007 – OCTOBER 31, 2008

MARCH 2009



TABLE OF CONTENTS

Page Number

BACKGROUND	1
SUMMARY OF FINDINGS	1
DESCRIPTION OF PROGRAM.....	2
Eligibility:	2
Billing:	2
PROGRAM SUBSCRIPTION	3
POTENTIAL CUSTOMERS	4
CUSTOMER EXPERIENCE	4
SPOT MARKET PRICES	4
SOURCE OF SUPPLY FOR SPOT MARKET ENERGY	7
ACTUAL SALES	7
MARGINAL COST OF ENERGY TO MANITOBA HYDRO	8
YEAR-TO-DATE RESULTS.....	8
PUB DIRECTIVE; ORDERS 116/08 AND 150/08.....	10
Attachment 1_SEP: Chronology of PUB Directives, MH Applications, and Reports	16
Attachment 2 PUB Approved Weekly SEP Rates - Medium	21
Attachment 3 PUB Approved Weekly SEP Rates - Large 750 V to 30 kV	24
Attachment 4 SEP Energy Supply Source	27
Attachment 5 Total Energy Sales in MW.h	32
Attachment 6 Energy Charge Revenue	34
Attachment 7 Distribution Charge Revenue	36
Attachment 8 Spot Market Energy Revenues Vs. Costs.....	38

REPORT TO PUBLIC UTILITIES BOARD
SURPLUS ENERGY PROGRAM
NOVEMBER 1, 2007 - OCTOBER 31, 2008

BACKGROUND

The Surplus Energy Program (“SEP”) was first approved on June 30, 2000 by Public Utilities Board (“PUB”) Order No. 90/00. The SEP program was a replacement program for the Industrial Surplus Energy (“ISE”), Dual Fuel Heating (“DFH”), and Surplus Energy to Self-Generators (“SESS”) programs. Customers began accepting service under the Terms and Conditions of SEP on December 4, 2000. For a brief history of PUB Orders and Manitoba Hydro’s applications and reports with respect to the SEP Program, please see Attachment 1.

As part of the original board order which approved SEP, Manitoba Hydro was directed to file annual reports on the status of the program. This is the eighth report and covers the period November 1, 2007 to October 31, 2008.

SUMMARY OF FINDINGS

The SEP Program is performing as anticipated and is of mutual benefit to Manitoba Hydro and its customers. This revenue neutral program offers customers choice and access to surplus energy at prices similar to those paid by export customers. To achieve the benefit of the program customers need to have flexibility in their operation to take advantage of lower price periods. Analysis shows that the majority of SEP customers have benefited from reduced bills relative to the General Service firm rate during this reporting period.

The value of Spot Market Energy to Manitoba Hydro during the current one-year period was \$1,138,131. Total revenue collected under SEP was \$1,149,472 (which excludes Basic Charges and Distribution Charges) resulting in net revenue of \$11,341.

The three main factors that affect SEP prices are extra-provincial sales, water levels, and transmission constraints to neighboring markets.

Above average water levels were experienced during this reporting period, as a result the majority of the SEP energy supply was sourced by exports with only a small portion provided by imports (roughly mid December to mid March). SEP prices for Peak and Shoulder were on average the third lowest since SEP has been available to customers. SEP Off-Peak prices were on

average fourth lowest. There was also less disparity within the weekly prices for each time period than in previous years which saw General Service Medium On-peak prices as high as 19.245 ¢/kW.h to as low as 0.645 ¢/kW.h. This year's SEP General Service Medium prices ranged from: On-Peak 11.058 ¢/kW.h to 5.112 ¢/kW.h., Shoulder 7.622 ¢/kW.h to 3.846 ¢/kW.h and Off-Peak 4.527 ¢/kW.h to 1.136 ¢/kW.h.

There was no interruption in service during the 12 month reporting period.

DESCRIPTION OF PROGRAM

Eligibility:

The Program makes surplus energy available on an interruptible basis to Manitoba Hydro General Service customers. Eligible customers can participate in one of three options. The three options are:

- 1) Industrial Load - Option 1 - available to industrial loads whose total monthly demand is 1,000 kV.A or greater. Under this option customers can only designate 25%¹ of their total load as SEP load.
- 2) Heating Load - Option 2 – available to electrical loads of 200 kW or greater. The electricity is to be used for space and/or water heating only and must be separately metered from the customer's firm load. Customers must have an alternate back-up energy source capable of heating the entire load in the event of an interruption.
- 3) Self-Generation Displacement - Option 3 – available to industrial intermittent loads with total demand between 200 kW to 50,000 kW. Load would not be considered intermittent if the average monthly load factor exceeds 25%. The load must be separately metered from the customer's firm load and must be fully backed up by generating equipment which is leased or owned by the customer and is located on the premises of the SEP load.

Billing:

All SEP customers are billed a monthly Basic Charge, Distribution Charge and an Energy Charge. The Basic Charge is \$50.00 per month for customers with connected loads less than 1,000 kV.A, and \$100.00 per month for connected loads greater than 1,000 kV.A. The

¹ Customers can designate up to 50% of their load as SEP provided they have an alternate back-up source of energy to supply the amount in excess of the 25%.

Distribution Charge per kilowatt-hour ranges from \$0.0006 to \$0.0062 dependent on customer class. The Energy Charge per kilowatt-hour, applicable to three time-of-use periods, varies based on expected spot market prices from week-to-week. The three time-of-use periods are peak, shoulder and off-peak, and are further defined by season as shown in the following table:

	Summer (May 1 – October 31)	Winter (November 1 – April 30)
Peak	12:01 to 20:00 hours Monday to Friday Except Statutory Holidays	07:01 to 11:00 hours and 16:01 to 20:00 hours Monday to Friday Except Statutory Holidays
Shoulder	All hours except Peak, every day from 07:01 to 23:00	
Off-Peak	All night time hours from 23:01 to 07:00 hours	

PROGRAM SUBSCRIPTION

As mentioned in last year's report two Option 2 customers in the Agricultural and Related Service Industry requested to be taken off SEP as of November 1, 2007. In addition, a third customer in the same industry had also requested to be taken off SEP during this reporting period, November 1, 2007 to October 31, 2008. All three of these customers were removed from SEP and placed on the General Service Firm rate as they were planning improvements to their operation to reduce their demand to below 200 kW in which case they would no longer qualify for SEP. By the end of this reporting period, 24 customers remain on the program.

Of the 24 SEP customers, 19 are Option 2 (Heating Load) and 5 are Option 3 (Self-Generation Displacement). There are no Option 1 (Industrial Load) customers.

All the Option 2 customers are classed as Medium Demand and fall under the following industry types:

Agricultural and Related Service Industries	3 customers
Educational Service Industries	11 customers
Local Government Service Industries	4 customers
Retail Food, Beverage and Drug Industries	1 customer

All the Option 3 customers are classed as Large Demand 750 V – 30 kV and are classified as:

Quarry & Sand Pit Industries	3 customers
Paper & Allied Products Industries	2 customers

All customers have appropriate back-up facilities to support their loads in the event of an interruption.

POTENTIAL CUSTOMERS

Manitoba Hydro still receives general inquiries regarding SEP but there are no indications of any new potential customers at this time. This may in part be due to the uncertainty about the duration of the program.

The SEP program offers savings to customers who are able to take advantage of lower price periods by scheduling their operations during times when energy prices are low. For many businesses this is not feasible.

CUSTOMER EXPERIENCE

Experience to date indicates that the majority of customers are satisfied with the SEP Program.

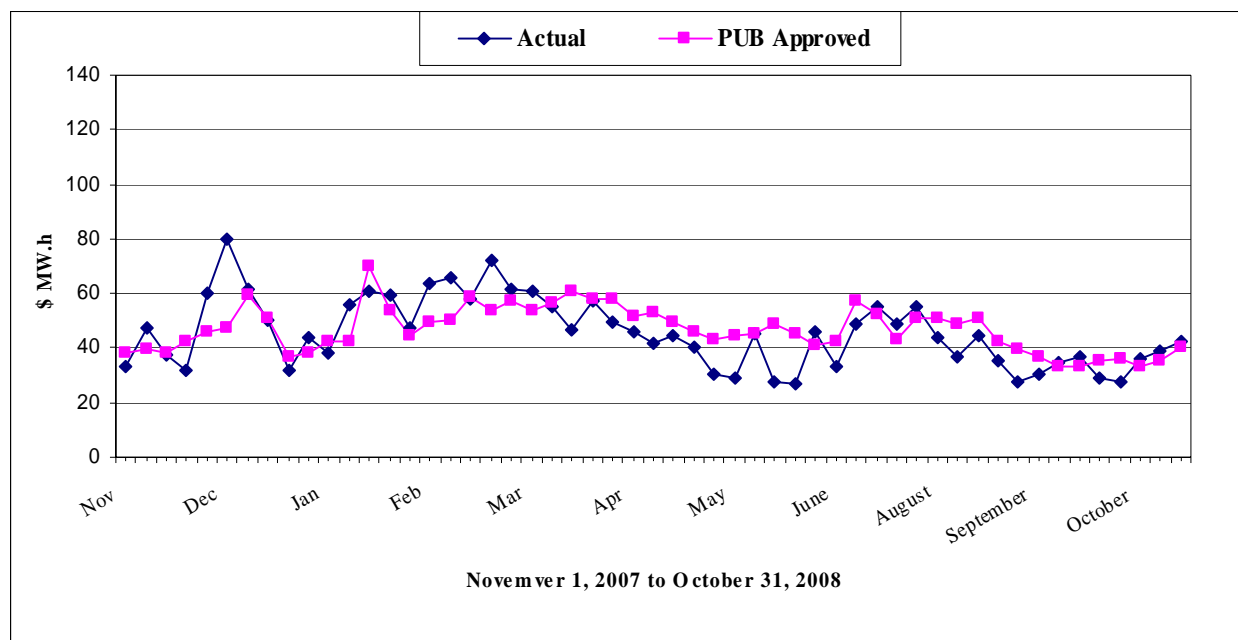
There have been no difficulties encountered with communication of pricing information to customers on a timely basis. This information is faxed to customers on Wednesday of each week, for prices that will be in place for the following week beginning Sunday midnight.

SPOT MARKET PRICES

Each Wednesday Manitoba Hydro applies to the Public Utilities Board for interim *ex parte* approval of the Spot Market Energy Rates to be in effect the following Monday through Sunday. The following table compares the weekly average prices approved by the PUB with the actual average after-the-fact prices throughout the reporting period. Attachments 2 and 3 provide the weekly rates for each pricing period for both Medium and Large 750-30 kV classes. The information is also shown graphically on page 6.

SEP - Average Weekly Rate Per MW.h				
Week Beginning	Actual	PUB Approved	Difference	PUB Order No.
November 1, 2007	\$33.58	\$38.21	(\$4.63)	128/07
November 5, 2007	\$47.41	\$39.40	\$8.01	142/07
November 12, 2007	\$37.34	\$38.39	(\$1.05)	143/07
November 19, 2007	\$32.04	\$42.49	(\$10.45)	144/07
November 26, 2007	\$60.08	\$45.89	\$14.19	147/07
December 3, 2007	\$80.18	\$47.59	\$32.59	151/07
December 10, 2007	\$61.65	\$59.09	\$2.56	156/07
December 17, 2007	\$50.36	\$50.62	(\$0.26)	158/07
December 24, 2007	\$31.72	\$36.91	(\$5.19)	163/07
December 31, 2007	\$43.49	\$38.44	\$5.05	165/07
January 7, 2008	\$38.53	\$42.54	(\$4.01)	1/08
January 14, 2008	\$55.65	\$42.55	\$13.10	2/08
January 21, 2008	\$60.95	\$70.15	(\$9.20)	4/08
January 28, 2008	\$59.50	\$54.01	\$5.49	5/08
February 4, 2008	\$47.56	\$44.58	\$2.98	7/08
February 11, 2008	\$63.41	\$49.51	\$13.90	9/08
February 18, 2008	\$65.57	\$50.55	\$15.02	10/08
February 25, 2008	\$58.20	\$58.85	(\$0.65)	12/08
March 3, 2008	\$71.81	\$53.93	\$17.88	13/08
March 10, 2008	\$61.65	\$57.15	\$4.50	15/08
March 17, 2008	\$60.50	\$53.47	\$7.03	18/08
March 24, 2008	\$54.80	\$56.77	(\$1.97)	20/08
March 31, 2008	\$46.79	\$60.89	(\$14.10)	23/08
April 7, 2008	\$57.32	\$57.91	(\$0.59)	37/08
April 14, 2008	\$49.30	\$57.91	(\$8.61)	42/08
April 21, 2008	\$45.70	\$51.72	(\$6.02)	46/08
April 28, 2008	\$41.59	\$53.29	(\$11.70)	49/08
May 5, 2008	\$44.30	\$49.54	(\$5.24)	53/08
May 12, 2008	\$40.18	\$45.80	(\$5.62)	55/08
May 19, 2008	\$30.32	\$43.47	(\$13.15)	58/08
May 26, 2008	\$28.77	\$44.57	(\$15.80)	61/08
June 2, 2008	\$45.10	\$45.21	(\$0.11)	67/08
June 9, 2008	\$27.81	\$48.68	(\$20.87)	77/08
June 16, 2008	\$26.63	\$45.46	(\$18.83)	80/08
June 23, 2008	\$45.74	\$41.21	\$4.53	81/08
June 30, 2008	\$33.31	\$42.60	(\$9.29)	86/08

SEP - Average Weekly Rate Per MW.h				
Week Beginning	Actual	PUB Approved	Difference	PUB Order No.
July 7, 2008	\$48.50	\$57.43	(\$8.93)	93/08
July 14, 2008	\$54.86	\$52.30	\$2.56	96/08
July 21, 2008	\$48.71	\$43.08	\$5.63	108/08
July 28, 2008	\$55.12	\$51.01	\$4.11	111/08
August 4, 2008	\$44.16	\$50.72	(\$6.56)	117/08
August 11, 2008	\$37.00	\$48.91	(\$11.91)	119/08
August 18, 2008	\$44.49	\$50.75	(\$6.26)	120/08
August 25, 2008	\$35.44	\$42.62	(\$7.18)	122/08
September 1, 2008	\$27.41	\$39.46	(\$12.05)	124/08
September 8, 2008	\$30.54	\$36.49	(\$5.95)	126/08
September 15, 2008	\$34.39	\$33.31	\$1.08	130/08
September 22, 2008	\$36.43	\$33.17	\$3.26	135/08
September 29, 2008	\$28.94	\$35.40	(\$6.46)	137/08
October 6, 2008	\$27.29	\$36.06	(\$8.77)	139/08
October 13, 2008	\$35.81	\$32.97	\$2.84	140/08
October 20, 2008	\$39.22	\$35.15	\$4.07	142/08
October 27, 2008	\$42.69	\$39.98	\$2.71	144/08
Average	\$45.47	\$46.76	(\$1.29)	



SOURCE OF SUPPLY FOR SPOT MARKET ENERGY

As part of its weekly Application to the PUB, Manitoba Hydro is required to indicate the expected source of supply of spot market energy which is used to derive the marginal cost of energy for the weekly SEP energy rates. The following summary table compares the expected source of supply, which was the basis of the weekly Applications, to the actual source of supply as determined after-the-fact. A more detailed analysis by week is provided in Attachment 4.

SEP Energy Supply Source (%)												
November 1, 2007 to October 31, 2008												
	Actual						Forecast					
	Imports			Exports			Imports			Exports		
	Peak	Shoulder	Off-Peak	Peak	Shoulder	Off - Peak	Peak	Shoulder	Off - Peak	Peak	Shoulder	Off - Peak
Peak	0%	0%	0%	100%	0%	0%	0%	0%	0%	100%	0%	0%
Shoulder	0%	0%	0%	0%	100%	0%	0%	0%	0%	0%	100%	0%
Off-Peak	0%	0%	5%	0%	0%	95%	0%	0%	13%	0%	0%	87%

The majority of SEP energy supply for this reporting period was sourced thru exports due to above average water availability. Only a small portion of off-peak energy was supplied from imports.

ACTUAL SALES

Total energy and revenue of SEP sales over the period November 1, 2007 to October 31, 2008 were 22,347 MW.h and \$1,280,539 (excluding \$17,150 in Basic Charges). The distribution of the energy and revenue by time-of-use period is shown below. A more detailed analysis by week is provided in Attachments 5, 6 and 7.

Period	SEP Energy Sales MW.h	Revenue		
		Distribution Charge	Energy Charge	Total
Peak	5,569	\$31,447	\$430,171	\$461,617
Shoulder	9,575	\$56,102	\$498,468	\$554,570
Off-Peak	7,203	\$43,518	\$220,833	\$264,351
Total	22,347	\$131,068	\$1,149,472	\$1,280,539

MARGINAL COST OF ENERGY TO MANITOBA HYDRO

Over the period November 1, 2007 through to October 31, 2008, the value of spot market energy (using after-the-fact prices) was \$1,138,131. Revenue from energy sales were \$1,149,472 resulting in net revenues to Manitoba Hydro of \$11,341 for the year. The following table summarizes Manitoba Hydro net revenue for each time-of-use period. A more detailed analysis by week is found in Attachment 8.

Spot Market Energy Revenues versus Costs				
Period	SEP Spot Market Energy Sales MW.h	SEP Sales*	Value of Spot Market Energy to Manitoba Hydro	Manitoba Hydro Net Revenue
Peak	5,569	\$430,171	\$415,560	\$14,611
Shoulder	9,575	\$498,468	\$489,023	\$9,445
Off-Peak	7,203	\$220,833	\$233,549	(\$12,716)
Total	22,347	\$1,149,472	\$1,138,131	\$11,341

* Does not include \$131,068 in Distribution Charges and \$17,150 in Basic Charges. The value of spot market energy to Manitoba Hydro was calculated by multiplying weekly MW.h sales by the actual weekly spot market energy rate at common bus.

YEAR-TO-DATE RESULTS

The following is a summary of the program since its inception on December 4, 2000.

<u>Number of Services</u>	<u>GS Medium</u>	<u>GS Large (750 V to 30 kV)</u>	<u>Total</u>
December 4, 2000 to October 31, 2001	24	4	28
November 1, 2001 to October 31, 2002	27	6	33
November 1, 2002 to October 31, 2003	27	6	33
November 1, 2003 to October 31, 2004	25	6	31
November 1, 2004 to October 31, 2005	22	6	28
November 1, 2005 to October 31, 2006	22	6	28
November 1, 2006 to October 31, 2007	22	5	27
November 1, 2007 to October 31, 2008	20	5	25

Actual SEP Sales (MW.h)

December 4, 2000 to October 31, 2001	18,123
November 1, 2001 to October 31, 2002	28,808
November 1, 2002 to October 31, 2003	19,473

November 1, 2003 to October 31, 2004	19,328
November 1, 2004 to October 31, 2005	25,013
November 1, 2005 to October 31, 2006	22,927
November 1, 2006 to October 31, 2007	22,152
November 1, 2007 to October 31, 2008	<u>22,347</u>
Total	178,171

	Basic	Distribution	Energy	
<u>Revenue from SEP Sales</u>	<u>Charge</u>	<u>Charge</u>	<u>Charge</u>	
December 4, 2000 to October 31, 2001	\$15,436	\$105,948	\$880,033	\$1,001,418
November 1, 2001 to October 31, 2002	\$20,169	\$164,565	\$959,529	\$1,144,263
November 1, 2002 to October 31, 2003	\$21,330	\$111,347	\$1,061,522	\$1,194,200
November 1, 2003 to October 31, 2004	\$21,700	\$112,572	\$1,201,434	\$1,335,707
November 1, 2004 to October 31, 2005	\$20,180	\$147,530	\$1,277,816	\$1,445,526
November 1, 2005 to October 31, 2006	\$19,200	\$134,445	\$1,248,314	\$1,401,959
November 1, 2006 to October 31, 2007	\$19,178	\$128,724	\$1,414,933	\$1,562,835
November 1, 2007 to October 31, 2008	\$17,150	\$131,068	\$1,149,472	<u>\$1,297,689</u>
Total				\$10,383,597

Marginal Cost of Energy to Manitoba Hydro

December 4, 2000 to October 31, 2001	\$891,308
November 1, 2001 to October 31, 2002	\$994,233
November 1, 2002 to October 31, 2003	\$1,056,307
November 1, 2003 to October 31, 2004	\$992,650
November 1, 2004 to October 31, 2005	\$1,241,792
November 1, 2005 to October 31, 2006	\$1,161,379
November 1, 2006 to October 31, 2007	\$1,392,736
November 1, 2007 to October 31, 2008	<u>\$1,138,131</u>
Total	\$8,868,535

Manitoba Hydro Net Revenue

December 4, 2000 to October 31, 2001	(\$11,275)
November 1, 2001 to October 31, 2002	(\$34,704)
November 1, 2002 to October 31, 2003	\$5,215
November 1, 2003 to October 31, 2004	\$208,784
November 1, 2004 to October 31, 2005	\$36,024
November 1, 2005 to October 31, 2006	\$86,935
November 1, 2006 to October 31, 2007	\$22,197
November 1, 2007 to October 31, 2008	<u>\$11,341</u>
Total	\$324,517

PUB DIRECTIVE: ORDERS 116/08 AND 150/08

PUB Board Orders 116/08 and 150/08 (refer to Attachment 1 for more details) directed Manitoba Hydro to analyze and compare the benefits and costs of the actual operation of the hydraulic generating system pursuant to various less aggressive sales strategies and to address the relative merits of withholding surplus energy from sale to SEP customers during off-peak periods.

Manitoba Hydro does not believe there is any reason to reduce availability of SEP energy to customers in general or during any particular period such as the off-peak, except under very unusual system conditions. Manitoba Hydro always prices SEP energy sales with the intent of achieving revenue neutrality with respect to the export revenue foregone, or the import purchase cost incurred to make the energy available to SEP customers. Manitoba Hydro cannot make itself better off by reducing the availability of energy to SEP customers during the off-peak or any other period. Manitoba Hydro already stores or releases water to optimize its value and cannot improve its situation by storing more than the optimum amount of water to reduce energy sales to SEP customers. If the customer chooses to purchase the energy, then the customer is obtaining value. As long as Manitoba Hydro is not harmed by the sale, there is no reason to deprive of the customer of the value they obtain from it. If a situation arises where Manitoba Hydro could potentially be harmed by making SEP sales, there are provisions in the terms and conditions to interrupt those sales in any or all time periods, with appropriate notice to the customer.

To provide more detail, and specifically with reference to the off-peak, there are three system conditions that can affect the value of energy that is made available to SEP customers and, therefore, the off-peak price, which is based on that value. In all three situations, the price is set to recover either the export revenue foregone or the cost of acquiring the energy (water rentals, thermal or imports including appropriate adjustments for transmission losses and incremental O&M charges).

The most common situation is where there are no restrictions on trading of energy. This occurs when all available energy can be marketed to either domestic customers or export customers and where all energy sales can be made out of either Manitoba generation, or imports during the off-peak period. In this condition there is no water spilled on the Manitoba system and there is no limitation on tie capacity to import during the off-peak period. In the past eight years this has been the situation 85% of the time. During unrestricted trading periods, SEP off-peak energy is sourced from either off-peak imports, Manitoba thermal generation, or reduced export sales and priced accordingly.

- 1) If Manitoba Hydro is importing during the off-peak period and using these imports to supply either domestic or export customers in any period. As long as there is remaining off-peak import capacity, off-peak SEP sales are priced to recover the cost of incremental off-peak imports.
- 2) If Manitoba Hydro is not importing to serve either domestic or export load, then off-peak SEP energy is sourced from potential export sales. If export sales are taking place off-peak, the off-peak SEP energy is priced to compensate for reduced off-peak exports. Alternatively, if no exports are taking place during the off-peak period, SEP off-peak sales may be priced on the basis of higher value shoulder, or even peak period export sales, unless it is advantageous to source the off-peak SEP sales from thermal generation or off-peak imports.

Two other, much less common system conditions can occur. The first is when there can be so much water in the system that availability of surplus energy fully loads the tie lines and no further exports can be made in any period. Spillage is usually occurring under these circumstances. In this situation, SEP customers are taking energy generated by water that would otherwise be spilled. The water cannot be stored as reservoirs are full and exports are being maximized to the extent possible given the available generating capacity and capabilities of the tielines. There is no lost opportunity cost to this energy, since there is no opportunity to take it to market or store it. The cost to serve the SEP off-peak load is production cost and water rental only and this low cost is reflected in the price to the SEP customer. This energy offering is additional, and not related to any market opportunity. The sale of this energy confers incremental societal benefits through additional water rental revenue for the Province and low cost electricity for SEP customers. This situation has occurred only eight per cent of the time in the last eight years.

The last situation, which has occurred seven percent of the time in the last eight years, is where the tie lines are fully loaded with imports during the off-peak period. In this situation, incremental energy demands are met from imports during the shoulder, or even peak periods which ever is the lowest purchase period. In this event off-peak SEP sales are priced at higher levels reflecting the cost of imports during these higher load hours.

The Board has indicated that Manitoba Hydro may find it advantageous to spill the water at times when it is setting the market clearing price in order to drive up the market price. Under Ontario and US market rules withholding generation by any means including the use of forced

spill for the purpose of increasing the market clearing price is considered market manipulation and is forbidden. However to the extent that the market clearing price declines as export volumes increase, SEP sales to domestic customers will divert energy from the export market and will have a favourable price affect, although not significant given the minimal volumes sold under the SEP.

In summary, SEP sales are always priced to recover the full cost of making them available. There is almost never a time when it would be advantageous to Manitoba Hydro to curtail SEP sales and, if such a rare situation were to arise, the terms and conditions allow curtailment of these sales.

The following table illustrates how much energy was sold under system congestion situation when imports were limited, during unrestricted trading, and during system congestion when system spill conditions materialized. It should be noted that SEP sales are the last economic activity of Manitoba Hydro's operation.

SEP Sales Off-Peak Period Only									
System Congestion (Limited Imports)	Dec 4/00 To Oct 31/01	Nov 1/01 to Oct 31/02	Nov 1/02 to Oct 31/03	Nov 1/03 to Oct 31/04	Nov 1/04 to Oct 31/05	Nov 1/05 to Oct 31/06	Nov 1/06 to Oct 31/07	Nov 1/07 to Oct 31/08	Total
MW.h	0	0	730	2,876	0	43	93	0	3,742
Revenue	\$0	\$0	\$54,988	\$203,359	\$0	\$4,196	\$9,161	\$0	\$271,704
Rev/kW.h	0.000	0.000	7.537	7.071	0.000	9.823	9.821	0.000	7.262
# of Weeks	0.0	0.0	8.7	19.3	0.0	0.3	0.7	0.0	29.0
Marginal Value (Unrestricted Trading)									
MW.h	6,296	9,316	5,305	2,891	7,413	5,934	6,775	7,203	51,133
Revenue	\$156,176	\$220,118	\$211,705	\$112,683	\$233,467	\$219,205	\$356,485	\$220,833	\$1,730,671
Rev/kW.h	2.480	2.363	3.991	3.898	3.150	3.694	5.262	3.066	3.385
# of Weeks	47.4	52.1	43.4	32.9	35.1	37.9	47.4	52.4	348.7
System Congestion (System Spill)									
MW.h	0	0	0	0	778	1,217	169	0	2,164
Revenue	\$0	\$0	\$0	\$0	\$5,799	\$8,679	\$1,568	\$0	\$16,047
Rev/kW.h	0.000	0.000	0.000	0.000	0.745	0.713	0.926	0.000	0.741
# of Weeks	0.0	0.0	0.0	0.0	17.0	14.0	4.0	0.0	35.0
Total									
MW.h	6,296	9,316	6,034	5,767	8,191	7,194	7,038	7,203	57,039
Revenue	\$156,176	\$220,118	\$266,693	\$316,043	\$239,267	\$232,080	\$367,213	\$220,833	\$2,018,422
Rev/kW.h	2.480	2.363	4.420	5.480	2.921	3.226	5.218	3.066	3.539
# of Weeks	47.0	52.0	52.0	52.0	52.0	52.0	52.0	52.0	411.000

It should also be noted that not only is restriction of off-peak sales unnecessary and non-beneficial to Manitoba Hydro, it would be significantly detrimental to SEP customers. If such a provision had been in place during the year currently being reported, customers would not have been able to replace the off-peak electrical energy except at significant additional cost. Manitoba Hydro estimates the customer bill increase impacts of replacing this energy as follows:

Replace current off-peak energy with propane at 60 cents per litre, 7 kW.h per litre: Increases customer cost relative to current overall SEP usage by 28%.

Industry	No. of Cust.	Total SEP Energy & Distribution Sales			SEP Peak & Shoulder Energy & Distribution Sales with Propane Off-Peak		
		MW.h	Revenue	Rev/ kW.h	MW.h	Revenue	Rev/ kW.h
Agricultural	4	1,137	\$63,549	5.59	1,137	\$85,265	7.502
Educational	11	8,222	\$458,208	5.57	8,222	\$602,706	7.330
Local Gov't	4	9,890	\$572,114	5.78	9,890	\$729,804	7.379
Paper & Allied Products	1	518	\$29,846	5.76	518	\$37,427	7.227
Quarry & Sand Pit	3	1,601	\$95,185	5.94	1,601	\$109,739	6.854
Retail Food, Beverage & Drug	2	979	\$61,637	6.30	979	\$68,503	7.000
Total	25	22,347	\$1,280,539	5.73	22,347	\$1,633,443	7.310

Move off-peak usage to shoulder and peak periods, if possible: Increases customer cost relative to current overall SEP usage by 17%

Industry	No. of Cust.	Total SEP Energy & Distribution Sales			SEP Peak & Shoulder Energy & Distribution Sales		
		MW.h	Revenue	Rev/ kW.h	MW.h	Revenue	Rev/ kW.h
Agricultural	4	1,137	\$63,549	5.59	685	\$46,557	6.80
Educational	11	8,222	\$458,208	5.57	5,268	\$349,537	6.63
Local Gov't	4	9,890	\$572,114	5.78	6,642	\$451,497	6.80
Retail Food, Beverage & Drug	1	518	\$29,846	5.76	361	\$23,963	6.64
Quarry & Sand Pit	3	1,601	\$95,185	5.94	1,339	\$87,251	6.52
Paper & Allied Products	2	979	\$61,637	6.30	849	\$57,382	6.76
Total	25	22,347	\$1,280,539	5.73	15,144	\$1,016,188	6.71

Convert all SEP usage to firm service: Increases customer cost relative to current overall SEP usage by 21%.

Industry	No. of Cust.	MW.h	SEP	Rev/ kW.h	Firm Service	Rev/ kW.h	Difference
Agricultural	4	1,137	\$65,699	5.78	\$106,787	9.40	(\$41,088)
Educational	11	8,142	\$466,008	5.72	\$666,869	8.19	(\$200,861)
Local Govn't	4	9,971	\$575,114	5.77	\$494,500	4.96	\$80,614
Paper & Allied Products	1	979	\$62,837	6.42	\$109,780	11.22	(\$46,942)
Quarry & Sand Pit	3	1,601	\$97,585	6.10	\$159,098	9.94	(\$61,513)
Retail Food, Beverage & Drug	2	518	\$30,446	5.88	\$34,092	6.58	(\$3,646)
Total	25	22,347	\$1,297,689	5.81	\$1,571,125	7.03	(\$273,436)

Attachment 1

SEP: Chronology of PUB Directives, MH Applications, and Reports

PUB Order	Date	PUB Board Findings & MH Applications and Reports Filings
	Oct 25/99	MH filed application for approval of the Surplus Energy Program (SEP)
90/00	Jun 30/00	<p>Page 25 - 8.0 It is Therefore Ordered That:</p> <p>1. Manitoba Hydro's application dated October 19, 1999 (<i>note: actual filing date was Oct 25/99</i>) for approval of the Surplus Energy Program BE AND IS HEREBY APPROVED subject to the following:</p> <p>(a) The Surplus Energy Program will terminate March 31, 2004 unless otherwise directed by the Board and notice of such termination shall be given to subscribers of the program and the Board by no later 12 months prior to the proposed termination date;</p> <p>(b) any and all proposed changes to the terms and conditions of service being approved by the Board.</p> <p>2. Manitoba Hydro should submit to the Board an annual report on the experience of the Surplus Energy Program by no later than January 31 of Years 2000, 2001, 2002 and 2003.</p>
	Jul 20/00	<p>MH letter - in response to Board Order 90 page 23 (<i>The Board finds that a notice period of 12 months is appropriate for a customer to give notice to convert from the Surplus Energy Program to firm service.</i>)</p> <p>MH requested variance to compensate Manitoba Hydro for summer capacity sales in the export market which it must forego in order to assure capacity for SEP customers who wish to convert to firm load on less than 16 months notice.</p>
132/00	Sep 29/00	<p>Page 4 - 4.0 It Is Therefore Ordered That:</p> <p>Board Order 90/00 dated June 30, 2000 be varied such that an SEP customer who chooses to convert to firm service has the following notice period options:</p> <p>1. For a twelve month notice period,</p> <p>a) the SEP customer will pay a premium of 1.0 cent per kilowatt hour for energy purchased during the summer peak hours; or</p> <p>b) the SEP customer will agree that load converted on 12 months notice shall be subject to curtailment under the provisions of Option A or C of the Curtailable Service Program for the first four months following conversion; or August 19, 2004</p> <p>2. A sixteen month notice period from May 1 to August 31 with Hydro</p>

PUB Order	Date	PUB Board Findings & MH Applications and Reports Filings
		retaining the discretion to lessen that notice period. A twelve month notice period from September 1 to April 30, with Hydro retaining the discretion to lessen that notice period.
	Oct 26/00	MH letter - filed revised Terms & Condition of SEP to be in accordance with Board Order 90/00 and 132/00. MH also advised that it intends to waive the requirement for a Professional engineer Certification of back-up facilities
143/01	Sep 13/01	<p>Page 2 - IT IS THEREFORE ORDERED THAT:</p> <p>(1) The revised Terms and Conditions of the Surplus Energy Program attached to this Order as Schedule "A", and are hereby approved subject to amendment to include the waiving of the engineering certificate for Option 3 as noted in the body of this Order and subject to a re-filing of same with the Board and Manitoba Hydro's current customers of the SEP.</p> <p>(2) Order No. 90/00 dated June 30, 2000, Directive No. 2 be amended as follows:</p> <p>Manitoba Hydro should submit to the Board an annual report on the experience of the Surplus Energy Program by no later than January 31 of Years 2002 and 2003.</p>
	Sep 21/01	MH filed revised SEP Terms and Conditions as required by BO 143/01
	Nov 30/01	MH filed report #1 on SEP for period Dec 4/00 to Oct 31/01
	Mar 12/03	MH filed report #2 on SEP for period Nov 1/01 to Oct 31/02
	Mar 24/03	MH - by correspondence requested SEP be extended to Mar 31/05 on <i>ex parte</i> bases.
153/03	Oct 31/03	<p>Page 8 - 5.0 IT IS THEREFORE ORDERED THAT:</p> <p>4. The request to extend the Surplus Energy Program until March 31, 2005, BE AND IS HEREBY APPROVED on an interim ex parte basis.</p>
	Jan 29/04	<p>- as part of the 2004 General Rate Application (GRA - Appendix 9.2.2, Volume 3) Manitoba Hydro requested the SEP program be extended another two years to March 31, 2007.</p> <p>- MH filed report #3 on SEP for period Nov 1/02 to Oct 31/03</p>
101/04	Jul 28/04	<p><u>Page 37</u> - 7.0 It Is Therefore Ordered That:</p> <p>8. MH is to extend the Terms and Conditions of the Surplus Energy Program, as proposed and amended by MH, until March 31, 2007.</p>
	May 17/05	MH filed report #4 on SEP for period Nov 1/03 to Oct 31/04

PUB Order	Date	PUB Board Findings & MH Applications and Reports Filings
	Jan 23/06	MH filed report #5 on SEP for period Nov 1/04 to Oct 31/05
	Apr 20/06	MH application to extend the SEP Terms & Conditions to Mar 31/09
	Sep 7/06	PUB letter - the PUB is prepared to extend the SEP from its current expiration date of Mar 31/07 to Oct 31/07 and also states its intention to review SEP in the upcoming MH GRA in the fall of 2007.
	Sep 28/06	MH letter - requests that the PUB reconsider its position and extend the program, at a minimum to October 31, 2008 reason being SEP customers need to be able to plan for modifications to or the elimination of SEP and require a minimum of 12 months notice period.
173/06	Dec 21/06	<p>Page 7 & 8 - The Board will therefore deny extension beyond October 31, 2007 ahead of the opportunity to fully test the related issues at the next General Rate Application hearing. The Board accepts the extension to October 31, 2007 based on the following understandings:</p> <ol style="list-style-type: none"> 1. SEP allows domestic customers to purchase surplus power at the same price/service levels as export customers; 2. SEP provides for displacing alternative fossil fuels for above normal heating needs and displacing diesel or gasoline self generation loads with hydroelectric power; 3. SEP supports domestic industrial activity; 4. SEP's displacement of alternative energy supply minimizes CO₂ and other emissions; and 5. SEP has been financially positive for MH and is expected to continue to be so in the foreseeable future. <p>At the next General Rate Application hearing, the Board will test the hypothesis that a threshold price for export sales, and hence SEP sales, below which sales would not occur, could be implemented and be in the public interest.</p> <p>Page 9 - 5.0 IT IS THEREFORE ORDERED THAT:</p> <ol style="list-style-type: none"> 1. The extension of the Surplus Energy Program is approved, to the earlier of October 31, 2007 or an application to amend by Manitoba Hydro. 2. Manitoba Hydro is to include a review of the Surplus Energy Program in its General Rate Application filing, due no later than August 1, 2007.
	Jan 12/07	MH filed report #6 on SEP for period Nov 1/05 to Oct 31/06
	Aug 1/07	MH GRA filing - requested immediate approval to extend SEP to

PUB Order	Date	PUB Board Findings & MH Applications and Reports Filings
		October 31/08 with final approval to extend the program to March 31/13 since it was anticipated the hearing would not take place until early 2008.
136/07	Oct 26/07	<p>Page 4 - On deliberation, the Board has determined that it would be appropriate to provide MH an eighteen month extension of SEP, concluding April 30, 2009, in recognition of the required twelve month notice period in the event of the termination of the program and the fact that the results of the GRA, to come in the form of a Board Order, would not be known until April 2008 at the earliest.</p> <p>Page 11 - 8.0 IT IS THEREFORE ORDERED THAT:</p> <p>1. The Surplus Energy Program approval IS HEREBY extended to April 30, 2009 on an interim basis, unless amended or extended by a further Order of the Board.</p>
	Feb 5/08	MH filed report #7 on SEP for period Nov 1/06 to Oct 31/07
90/08	Jun 30/08	<p>Page 10 - The Board will approve the extension of SEP until October 31, 2008, with the application for a further extension to March 31, 2013 to be dealt with in the subsequent Order.</p> <p>It Is Therefore Ordered That:</p> <p>Page 25 - 5. Extension of the Surplus Energy Program (SEP) to October 31, 2008 BE AND IS HEREBY APPROVED;</p>
116/08	Jul 29/08	<p>Page 310 - The Board is concerned with MH's marketing practices that yield extremely low prices for off-peak exports, and suggests that retaining energy in storage may prove more beneficial in the longer term than selling power for extremely low prices. The Board acknowledges that MH may be operating the system at near optimal levels to avoid "spilling" water, but there may be a benefit to spilling when prices get too low.</p> <p>MH will be directed to provide a report to the Board by January 15, 2009 evaluating the Surplus Energy Program; the report should employ monthly historical data from 2000 to 2008 to analyze and compare the benefits and costs of the actual operation of the hydraulic generating system pursuant to various less aggressive sales strategies. This report should address the relative merits of withholding surplus energy from sales at off-peak periods.</p> <p>The report may show whether selling at any cost increased the financial losses in 2003/04; and may also have resulted in foregone opportunity exports in 2004/05 because of low energy in storage.</p>

PUB Order	Date	PUB Board Findings & MH Applications and Reports Filings
		In the interim, and by Order 90/08, the Board approved the extension of the SEP until October 31, 2008, on the condition that annual reports will continue to be provided.
	Sep 18/08	MH application to vary BO 116/08 - MH requests that the PUB extend the date for the filing of the SEP report to February 28, 2009.
150/08	Nov 7/08	<p>Page 59 MH requires a calendar year end date to complete the report, and this to result in an expected report completion by February 28, 2009. Accordingly, the Board agrees to vary the deadline date for the SEP report until February 28, 2009.</p> <p>MH has requested final approval of the SEP to March 31, 2013. The Board, in Order 136/07 granted conditional approval of the SEP until April 30, 2009 unless amended or extended by further Order of the Board.</p> <p>Through this Order, the Board varies Orders 90/08 and 116/08 by confirming that the Surplus Energy Program is conditionally approved until April 30, 2009.</p> <p>The Board's consideration of MH's request for final approval of the SEP until March 31, 2013 will follow receipt and review of the February 28, 2009 SEP Annual Report.</p> <p>IT IS THEREFORE ORDERED THAT:</p> <p>Page 80 - 27. MH to provide a report to the Board by January 15, 2009 February 28, 2009 evaluating the Surplus Energy Program. The report should employ monthly historical data from 2000 to 2008 to analyze and compare the benefit and costs of the actual operation of the hydraulic generating system pursuant to various less aggressive sales strategies. This report should address the relative merits of withholding surplus energy from sales at off-peak periods;</p> <p>The Board confirms Order 136/07 and the conditional approval granted to extend the SEP until April 30, 2009 unless further amended or extended by Order of the Board.</p>

Attachment 2
PUB Approved Weekly SEP Rates - Medium

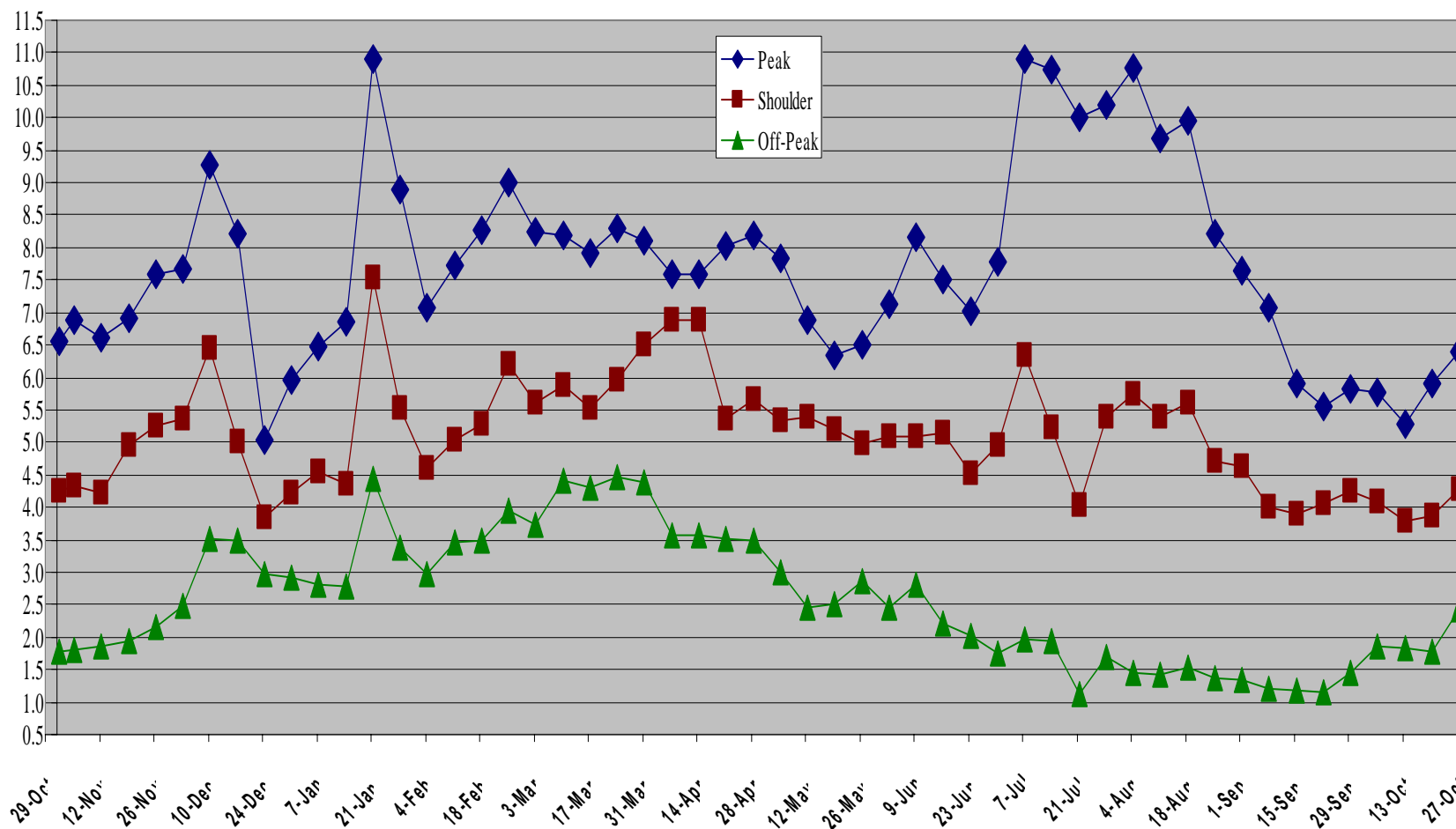
PUB APPROVED WEEKLY SEP RATES
¢ / kW.h
GENERAL SERVICE MEDIUM

Week Beginning	Peak	Shoulder	Off-Peak
November 1, 2007	6.638	4.299	1.814
November 5, 2007	6.965	4.400	1.828
November 12, 2007	6.694	4.266	1.872
November 19, 2007	7.013	5.014	1.979
November 26, 2007	7.683	5.318	2.185
December 3, 2007	7.772	5.438	2.506
December 10, 2007	9.386	6.544	3.567
December 17, 2007	8.310	5.078	3.542
December 24, 2007	5.112	3.898	3.009
December 31, 2007	6.040	4.284	2.961
January 7, 2008	6.572	4.596	2.846
January 14, 2008	6.947	4.409	2.825
January 21, 2008	11.040	7.622	4.498
January 28, 2008	9.013	5.601	3.438
February 4, 2008	7.167	4.650	2.999
February 11, 2008	7.833	5.104	3.498
February 18, 2008	8.375	5.356	3.548
February 25, 2008	9.113	6.294	4.005
March 3, 2008	8.355	5.681	3.781
March 10, 2008	8.290	5.970	4.473
March 17, 2008	8.012	5.586	4.348
March 24, 2008	8.406	6.034	4.527
March 31, 2008	8.206	6.597	4.452
April 7, 2008	7.692	6.988	3.629
April 14, 2008	7.692	6.988	3.629
April 21, 2008	8.123	5.427	3.574
April 28, 2008	8.286	5.747	3.543
May 5, 2008	7.935	5.402	3.052
May 12, 2008	6.981	5.453	2.486
May 19, 2008	6.433	5.273	2.538
May 26, 2008	6.594	5.047	2.893
June 2, 2008	7.222	5.163	2.497
June 9, 2008	8.263	5.156	2.860

PUB APPROVED WEEKLY SEP RATES
¢ / kW.h
GENERAL SERVICE MEDIUM

Week Beginning	Peak	Shoulder	Off-Peak
June 16, 2008	7.600	5.212	2.244
June 23, 2008	7.106	4.587	2.058
June 30, 2008	7.892	5.027	1.778
July 7, 2008	11.058	6.430	1.994
July 14, 2008	10.883	5.290	1.962
July 21, 2008	10.149	4.072	1.136
July 28, 2008	10.343	5.474	1.705
August 4, 2008	10.923	5.829	1.468
August 11, 2008	9.812	5.451	1.447
August 18, 2008	10.082	5.683	1.541
August 25, 2008	8.319	4.783	1.385
September 1, 2008	7.748	4.687	1.353
September 8, 2008	7.162	4.048	1.218
September 15, 2008	5.986	3.946	1.184
September 22, 2008	5.634	4.123	1.164
September 29, 2008	5.894	4.299	1.458
October 6, 2008	5.854	4.146	1.890
October 13, 2008	5.361	3.846	1.866
October 20, 2008	5.980	3.927	1.796
October 27, 2008	6.482	4.323	2.453
Average Rate	7.819	5.167	2.609
Maximum Rate	11.058	7.622	4.527
Minimum Rate	5.112	3.846	1.136
Revenue/kW.h for the Class	7.738	5.237	3.083

Approved SEP Weekly Rates General Service Large 750 V to 30 kV



Attachment 3
PUB Approved Weekly SEP Rates - Large 750 V to 30 kV

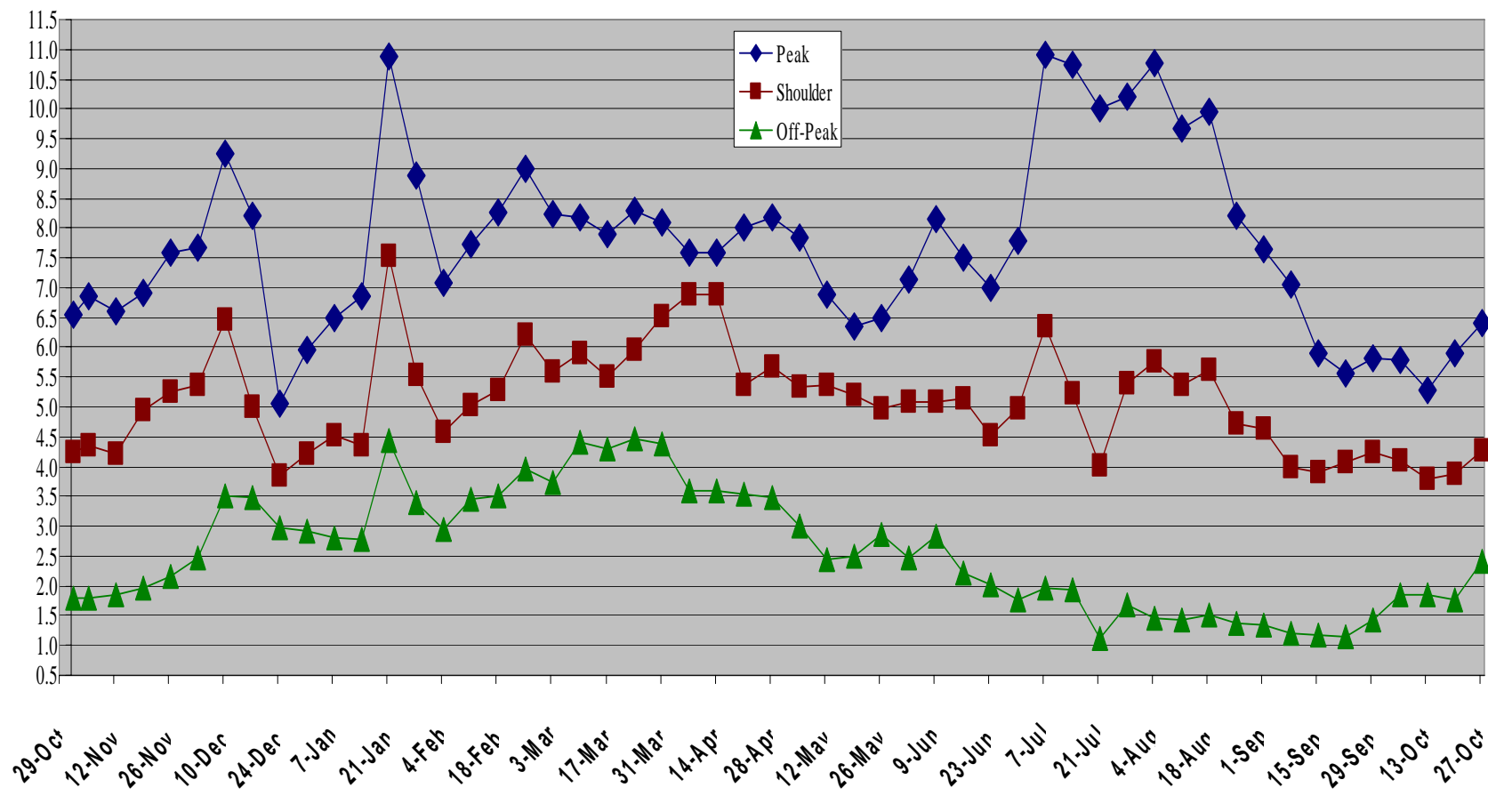
PUB APPROVED WEEKLY SEP RATES
¢ / kW.h
GENERAL SERVICE LARGE 750 V to 30 kV

Week Beginning	Peak	Shoulder	Off-Peak
November 1, 2007	6.550	4.242	1.789
November 5, 2007	6.872	4.341	1.803
November 12, 2007	6.605	4.209	1.847
November 19, 2007	6.920	4.948	1.953
November 26, 2007	7.581	5.247	2.156
December 3, 2007	7.669	5.366	2.472
December 10, 2007	9.261	6.457	3.520
December 17, 2007	8.200	5.011	3.495
December 24, 2007	5.044	3.846	2.969
December 31, 2007	5.959	4.227	2.922
January 7, 2008	6.484	4.535	2.808
January 14, 2008	6.854	4.350	2.787
January 21, 2008	10.893	7.521	4.438
January 28, 2008	8.893	5.527	3.392
February 4, 2008	7.072	4.588	2.959
February 11, 2008	7.729	5.037	3.451
February 18, 2008	8.263	5.284	3.501
February 25, 2008	8.992	6.211	3.952
March 3, 2008	8.244	5.605	3.731
March 10, 2008	8.180	5.890	4.414
March 17, 2008	7.906	5.512	4.290
March 24, 2008	8.294	5.954	4.466
March 31, 2008	8.097	6.509	4.392
April 7, 2008	7.590	6.895	3.581
April 14, 2008	7.590	6.895	3.581
April 21, 2008	8.015	5.355	3.526
April 28, 2008	8.176	5.671	3.496
May 5, 2008	7.830	5.330	3.011
May 12, 2008	6.888	5.381	2.453
May 19, 2008	6.347	5.203	2.505

PUB APPROVED WEEKLY SEP RATES
¢ / kW.h
GENERAL SERVICE LARGE 750 V to 30 kV

Week Beginning	Peak	Shoulder	Off-Peak
May 26, 2008	6.506	4.980	2.855
June 2, 2008	7.126	5.095	2.464
June 9, 2008	8.153	5.087	2.822
June 16, 2008	7.500	5.143	2.214
June 23, 2008	7.011	4.526	2.030
June 30, 2008	7.787	4.960	1.754
July 7, 2008	10.911	6.344	1.967
July 14, 2008	10.739	5.219	1.936
July 21, 2008	10.014	4.018	1.121
July 28, 2008	10.205	5.402	1.682
August 4, 2008	10.778	5.752	1.448
August 11, 2008	9.682	5.379	1.427
August 18, 2008	9.948	5.607	1.520
August 25, 2008	8.209	4.720	1.367
September 1, 2008	7.645	4.625	1.335
September 8, 2008	7.067	3.994	1.202
September 15, 2008	5.907	3.893	1.168
September 22, 2008	5.559	4.068	1.148
September 29, 2008	5.815	4.242	1.438
October 6, 2008	5.776	4.091	1.864
October 13, 2008	5.290	3.795	1.841
October 20, 2008	5.900	3.875	1.772
October 27, 2008	6.396	4.265	2.420
Average Rate	7.716	5.099	2.575
Maximum Rate	10.911	7.521	4.466
Minimum Rate	5.044	3.795	1.121
Revenue/kW.h for the Class	7.669	4.973	2.778

Approved SEP Weekly Rates General Service Large 750 V to 30 kV



Attachment 4 SEP Energy Supply Source

SEP Energy Supply Source (%)													
Week Of	Period	Actual						Forecast					
		Imports			Exports			Imports			Exports		
		Peak	Shoulder	Off Peak	Peak	Shoulder	Off Peak	Peak	Shoulder	Off - Peak	Peak	Shoulder	Off Peak
Nov 01/07	Peak	0%	0%	0%	100%	0%	0%	0%	0%	0%	100%	0%	0%
	Shoulder	0%	0%	0%	0%	100%	0%	0%	0%	0%	0%	100%	0%
	Off-Peak	0%	0%	0%	0%	0%	100%	0%	0%	0%	0%	0%	100%
Nov 05/07	Peak	0%	0%	0%	100%	0%	0%	0%	0%	0%	100%	0%	0%
	Shoulder	0%	0%	0%	0%	100%	0%	0%	0%	0%	0%	100%	0%
	Off-Peak	0%	0%	0%	0%	0%	100%	0%	0%	0%	0%	0%	100%
Nov 12/07	Peak	0%	0%	0%	100%	0%	0%	0%	0%	0%	100%	0%	0%
	Shoulder	0%	0%	0%	0%	100%	0%	0%	0%	0%	0%	100%	0%
	Off-Peak	0%	0%	0%	0%	0%	100%	0%	0%	0%	0%	0%	100%
Nov 19/07	Peak	0%	0%	0%	100%	0%	0%	0%	0%	0%	100%	0%	0%
	Shoulder	0%	0%	0%	0%	100%	0%	0%	0%	0%	0%	100%	0%
	Off-Peak	0%	0%	0%	0%	0%	100%	0%	0%	0%	0%	0%	100%
Nov 26/07	Peak	0%	0%	0%	100%	0%	0%	0%	0%	0%	100%	0%	0%
	Shoulder	0%	0%	0%	0%	100%	0%	0%	0%	0%	0%	100%	0%
	Off-Peak	0%	0%	0%	0%	0%	100%	0%	0%	0%	0%	0%	100%
Dec 03/07	Peak	0%	0%	0%	100%	0%	0%	0%	0%	0%	100%	0%	0%
	Shoulder	0%	0%	0%	0%	100%	0%	0%	0%	0%	0%	100%	0%
	Off-Peak	0%	0%	0%	0%	0%	100%	0%	0%	0%	0%	0%	100%
Dec 10/07	Peak	0%	0%	0%	100%	0%	0%	0%	0%	0%	100%	0%	0%
	Shoulder	0%	0%	0%	0%	100%	0%	0%	0%	0%	0%	100%	0%
	Off-Peak	0%	0%	0%	0%	0%	100%	0%	0%	0%	0%	0%	100%
Dec 17/07	Peak	0%	0%	0%	100%	0%	0%	0%	0%	0%	100%	0%	0%
	Shoulder	0%	0%	0%	0%	100%	0%	0%	0%	0%	0%	100%	0%
	Off-Peak	0%	0%	29%	0%	0%	71%	0%	0%	86%	0%	0%	14%
Dec 24/07	Peak	0%	0%	0%	100%	0%	0%	0%	0%	0%	100%	0%	0%
	Shoulder	0%	0%	0%	0%	100%	0%	0%	0%	22%	0%	78%	0%
	Off-Peak	0%	0%	86%	0%	0%	14%	0%	0%	100%	0%	0%	0%
Dec 31/07	Peak	0%	0%	0%	100%	0%	0%	0%	0%	0%	100%	0%	0%
	Shoulder	0%	0%	0%	0%	100%	0%	0%	0%	0%	0%	100%	0%
	Off-Peak	0%	0%	29%	0%	0%	71%	0%	0%	100%	0%	0%	0%
Jan 07/08	Peak	0%	0%	0%	100%	0%	0%	0%	0%	0%	100%	0%	0%

SEP Energy Supply Source (%)													
Week Of	Period	Actual						Forecast					
		Imports			Exports			Imports			Exports		
		Peak	Shoulder	Off Peak	Peak	Shoulder	Off Peak	Peak	Shoulder	Off - Peak	Peak	Shoulder	Off Peak
	Shoulder	0%	0%	0%	0%	100%	0%	0%	0%	0%	0%	100%	0%
	Off-Peak	0%	0%	14%	0%	0%	86%	0%	0%	100%	0%	0%	0%
Jan 14/08	Peak	0%	0%	0%	100%	0%	0%	0%	0%	0%	100%	0%	0%
	Shoulder	0%	0%	0%	0%	100%	0%	0%	0%	0%	0%	100%	0%
	Off-Peak	0%	0%	0%	0%	0%	100%	0%	0%	100%	0%	0%	0%
Jan 21/08	Peak	0%	0%	0%	100%	0%	0%	0%	0%	0%	100%	0%	0%
	Shoulder	0%	0%	0%	0%	100%	0%	0%	0%	0%	0%	100%	0%
	Off-Peak	0%	0%	0%	0%	0%	100%	0%	0%	14%	0%	0%	86%
Jan 28/08	Peak	0%	0%	0%	100%	0%	0%	0%	0%	0%	100%	0%	0%
	Shoulder	0%	0%	0%	0%	100%	0%	0%	0%	0%	0%	100%	0%
	Off-Peak	0%	0%	0%	0%	0%	100%	0%	0%	0%	0%	0%	100%
Feb 04/08	Peak	0%	0%	0%	100%	0%	0%	0%	0%	0%	100%	0%	0%
	Shoulder	0%	0%	0%	0%	100%	0%	0%	0%	0%	0%	100%	0%
	Off-Peak	0%	0%	0%	0%	0%	100%	0%	0%	0%	0%	0%	100%
Feb 11/08	Peak	0%	0%	0%	100%	0%	0%	0%	0%	0%	100%	0%	0%
	Shoulder	0%	0%	0%	0%	100%	0%	0%	0%	0%	0%	100%	0%
	Off-Peak	0%	0%	14%	0%	0%	86%	0%	0%	0%	0%	0%	100%
Feb 18/08	Peak	0%	0%	0%	100%	0%	0%	0%	0%	0%	100%	0%	0%
	Shoulder	0%	0%	0%	0%	100%	0%	0%	0%	0%	0%	100%	0%
	Off-Peak	0%	0%	0%	0%	0%	100%	0%	0%	0%	0%	0%	100%
Feb 25/08	Peak	0%	0%	0%	100%	0%	0%	0%	0%	0%	100%	0%	0%
	Shoulder	0%	0%	0%	0%	100%	0%	0%	0%	0%	0%	100%	0%
	Off-Peak	0%	0%	14%	0%	0%	86%	0%	0%	0%	0%	0%	100%
Mar 03/08	Peak	0%	0%	0%	100%	0%	0%	0%	0%	0%	100%	0%	0%
	Shoulder	0%	0%	0%	0%	100%	0%	0%	0%	0%	0%	100%	0%
	Off-Peak	0%	0%	14%	0%	0%	86%	0%	0%	0%	0%	0%	100%
Mar 10/08	Peak	0%	0%	0%	100%	0%	0%	0%	0%	0%	100%	0%	0%
	Shoulder	0%	0%	0%	0%	100%	0%	0%	0%	0%	0%	100%	0%
	Off-Peak	0%	0%	57%	0%	0%	43%	0%	0%	57%	0%	0%	43%
Mar 17/08	Peak	0%	0%	0%	100%	0%	0%	0%	0%	0%	100%	0%	0%
	Shoulder	0%	0%	0%	0%	100%	0%	0%	0%	0%	0%	100%	0%
	Off-Peak	0%	0%	14%	0%	0%	86%	0%	0%	14%	0%	0%	86%
Mar 24/08	Peak	0%	0%	0%	100%	0%	0%	0%	0%	0%	100%	0%	0%

SEP Energy Supply Source (%)													
Week Of	Period	Actual						Forecast					
		Imports			Exports			Imports			Exports		
		Peak	Shoulder	Off Peak	Peak	Shoulder	Off Peak	Peak	Shoulder	Off - Peak	Peak	Shoulder	Off Peak
	Shoulder	0%	0%	0%	0%	100%	0%	0%	0%	0%	0%	100%	0%
	Off-Peak	0%	0%	0%	0%	0%	100%	0%	0%	0%	0%	0%	100%
Mar 31/08	Peak	0%	0%	0%	100%	0%	0%	0%	0%	0%	100%	0%	0%
	Shoulder	0%	0%	0%	0%	100%	0%	0%	0%	0%	0%	100%	0%
	Off-Peak	0%	0%	0%	0%	0%	100%	0%	0%	0%	0%	0%	100%
Apr 07/08	Peak	0%	0%	0%	100%	0%	0%	0%	0%	0%	100%	0%	0%
	Shoulder	0%	0%	0%	0%	100%	0%	0%	0%	0%	0%	100%	0%
	Off-Peak	0%	0%	0%	0%	0%	100%	0%	0%	0%	0%	0%	100%
Apr 14/08	Peak	0%	0%	0%	100%	0%	0%	0%	0%	0%	100%	0%	0%
	Shoulder	0%	0%	0%	0%	100%	0%	0%	0%	0%	0%	100%	0%
	Off-Peak	0%	0%	0%	0%	0%	100%	0%	0%	0%	0%	0%	100%
Apr 21/08	Peak	0%	0%	0%	100%	0%	0%	0%	0%	0%	100%	0%	0%
	Shoulder	0%	0%	0%	0%	100%	0%	0%	0%	0%	0%	100%	0%
	Off-Peak	0%	0%	0%	0%	0%	100%	0%	0%	0%	0%	0%	100%
Apr 28/08	Peak	0%	0%	0%	100%	0%	0%	0%	0%	0%	100%	0%	0%
	Shoulder	0%	0%	0%	0%	100%	0%	0%	0%	0%	0%	100%	0%
	Off-Peak	0%	0%	0%	0%	0%	100%	0%	0%	86%	0%	0%	14%
May 05/08	Peak	0%	0%	0%	100%	0%	0%	0%	0%	0%	100%	0%	0%
	Shoulder	0%	0%	0%	0%	100%	0%	0%	0%	0%	0%	100%	0%
	Off-Peak	0%	0%	0%	0%	0%	100%	0%	0%	0%	0%	0%	100%
May 12/08	Peak	0%	0%	0%	100%	0%	0%	0%	0%	0%	100%	0%	0%
	Shoulder	0%	0%	0%	0%	100%	0%	0%	0%	0%	0%	100%	0%
	Off-Peak	0%	0%	0%	0%	0%	100%	0%	0%	0%	0%	0%	100%
May 19/08	Peak	0%	0%	0%	100%	0%	0%	0%	0%	0%	100%	0%	0%
	Shoulder	0%	0%	0%	0%	100%	0%	0%	0%	0%	0%	100%	0%
	Off-Peak	0%	0%	0%	0%	0%	100%	0%	0%	0%	0%	0%	100%
May 26/08	Peak	0%	0%	0%	100%	0%	0%	0%	0%	0%	100%	0%	0%
	Shoulder	0%	0%	0%	0%	100%	0%	0%	0%	0%	0%	100%	0%
	Off-Peak	0%	0%	0%	0%	0%	100%	0%	0%	0%	0%	0%	100%
Jun 02/08	Peak	0%	0%	0%	100%	0%	0%	0%	0%	0%	100%	0%	0%
	Shoulder	0%	0%	0%	0%	100%	0%	0%	0%	0%	0%	100%	0%
	Off-Peak	0%	0%	0%	0%	0%	100%	0%	0%	0%	0%	0%	100%
Jun 09/08	Peak	0%	0%	0%	100%	0%	0%	0%	0%	0%	100%	0%	0%

SEP Energy Supply Source (%)													
Week Of	Period	Actual						Forecast					
		Imports			Exports			Imports			Exports		
		Peak	Shoulder	Off Peak	Peak	Shoulder	Off Peak	Peak	Shoulder	Off - Peak	Peak	Shoulder	Off Peak
	Shoulder	0%	0%	0%	0%	100%	0%	0%	0%	0%	0%	100%	0%
	Off-Peak	0%	0%	0%	0%	0%	100%	0%	0%	0%	0%	0%	100%
Jun 16/08	Peak	0%	0%	0%	100%	0%	0%	0%	0%	0%	100%	0%	0%
	Shoulder	0%	0%	0%	0%	100%	0%	0%	0%	0%	0%	100%	0%
	Off-Peak	0%	0%	0%	0%	0%	100%	0%	0%	0%	0%	0%	100%
Jun 23/08	Peak	0%	0%	0%	100%	0%	0%	0%	0%	0%	100%	0%	0%
	Shoulder	0%	0%	0%	0%	100%	0%	0%	0%	0%	0%	100%	0%
	Off-Peak	0%	0%	0%	0%	0%	100%	0%	0%	0%	0%	0%	100%
Jun 30/08	Peak	0%	0%	0%	100%	0%	0%	0%	0%	0%	100%	0%	0%
	Shoulder	0%	0%	0%	0%	100%	0%	0%	0%	0%	0%	100%	0%
	Off-Peak	0%	0%	0%	0%	0%	100%	0%	0%	0%	0%	0%	100%
Jul 07/08	Peak	0%	0%	0%	100%	0%	0%	0%	0%	0%	100%	0%	0%
	Shoulder	0%	0%	0%	0%	100%	0%	0%	0%	0%	0%	100%	0%
	Off-Peak	0%	0%	0%	0%	0%	100%	0%	0%	0%	0%	0%	100%
Jul 14/08	Peak	0%	0%	0%	100%	0%	0%	0%	0%	0%	100%	0%	0%
	Shoulder	0%	0%	0%	0%	100%	0%	0%	0%	0%	0%	100%	0%
	Off-Peak	0%	0%	0%	0%	0%	100%	0%	0%	0%	0%	0%	100%
Jul 21/08	Peak	0%	0%	0%	100%	0%	0%	0%	0%	0%	100%	0%	0%
	Shoulder	0%	0%	0%	0%	100%	0%	0%	0%	0%	0%	100%	0%
	Off-Peak	0%	0%	0%	0%	0%	100%	0%	0%	0%	0%	0%	100%
Jul 28/08	Peak	0%	0%	0%	100%	0%	0%	0%	0%	0%	100%	0%	0%
	Shoulder	0%	0%	0%	0%	100%	0%	0%	0%	0%	0%	100%	0%
	Off-Peak	0%	0%	0%	0%	0%	100%	0%	0%	0%	0%	0%	100%
Aug 04/08	Peak	0%	0%	0%	100%	0%	0%	0%	0%	0%	100%	0%	0%
	Shoulder	0%	0%	0%	0%	100%	0%	0%	0%	0%	0%	100%	0%
	Off-Peak	0%	0%	0%	0%	0%	100%	0%	0%	0%	0%	0%	100%
Aug 11/08	Peak	0%	0%	0%	100%	0%	0%	0%	0%	0%	100%	0%	0%
	Shoulder	0%	0%	0%	0%	100%	0%	0%	0%	0%	0%	100%	0%
	Off-Peak	0%	0%	0%	0%	0%	100%	0%	0%	0%	0%	0%	100%
Aug 18/08	Peak	0%	0%	0%	100%	0%	0%	0%	0%	0%	100%	0%	0%
	Shoulder	0%	0%	0%	0%	100%	0%	0%	0%	0%	0%	100%	0%
	Off-Peak	0%	0%	0%	0%	0%	100%	0%	0%	0%	0%	0%	100%
AUG 25/08	Peak	0%	0%	0%	100%	0%	0%	0%	0%	0%	100%	0%	0%

SEP Energy Supply Source (%)													
Week Of	Period	Actual						Forecast					
		Imports			Exports			Imports			Exports		
		Peak	Shoulder	Off Peak	Peak	Shoulder	Off Peak	Peak	Shoulder	Off - Peak	Peak	Shoulder	Off Peak
	Shoulder	0%	0%	0%	0%	100%	0%	0%	0%	0%	0%	100%	0%
	Off-Peak	0%	0%	0%	0%	0%	100%	0%	0%	0%	0%	0%	100%
Sep 01/08	Peak	0%	0%	0%	100%	0%	0%	0%	0%	0%	100%	0%	0%
	Shoulder	0%	0%	0%	0%	100%	0%	0%	0%	0%	0%	100%	0%
	Off-Peak	0%	0%	0%	0%	0%	100%	0%	0%	0%	0%	0%	100%
Sep 08/08	Peak	0%	0%	0%	100%	0%	0%	0%	0%	0%	100%	0%	0%
	Shoulder	0%	0%	0%	0%	100%	0%	0%	0%	0%	0%	100%	0%
	Off-Peak	0%	0%	0%	0%	0%	100%	0%	0%	0%	0%	0%	100%
Sep 15/08	Peak	0%	0%	0%	100%	0%	0%	0%	0%	0%	100%	0%	0%
	Shoulder	0%	0%	0%	0%	100%	0%	0%	0%	0%	0%	100%	0%
	Off-Peak	0%	0%	0%	0%	0%	100%	0%	0%	0%	0%	0%	100%
Sep 22/08	Peak	0%	0%	0%	100%	0%	0%	0%	0%	0%	100%	0%	0%
	Shoulder	0%	0%	0%	0%	100%	0%	0%	0%	0%	0%	100%	0%
	Off-Peak	0%	0%	0%	0%	0%	100%	0%	0%	0%	0%	0%	100%
Sep 29/08	Peak	0%	0%	0%	100%	0%	0%	0%	0%	0%	100%	0%	0%
	Shoulder	0%	0%	0%	0%	100%	0%	0%	0%	0%	0%	100%	0%
	Off-Peak	0%	0%	0%	0%	0%	100%	0%	0%	0%	0%	0%	100%
Oct 06/08	Peak	0%	0%	0%	100%	0%	0%	0%	0%	0%	100%	0%	0%
	Shoulder	0%	0%	0%	0%	100%	0%	0%	0%	0%	0%	100%	0%
	Off-Peak	0%	0%	0%	0%	0%	100%	0%	0%	0%	0%	0%	100%
Oct 13/08	Peak	0%	0%	0%	100%	0%	0%	0%	0%	0%	100%	0%	0%
	Shoulder	0%	0%	0%	0%	100%	0%	0%	0%	0%	0%	100%	0%
	Off-Peak	0%	0%	0%	0%	0%	100%	0%	0%	0%	0%	0%	100%
Oct 20/08	Peak	0%	0%	0%	100%	0%	0%	0%	0%	0%	100%	0%	0%
	Shoulder	0%	0%	0%	0%	100%	0%	0%	0%	0%	0%	100%	0%
	Off-Peak	0%	0%	0%	0%	0%	100%	0%	0%	0%	0%	0%	100%
Oct 27/08	Peak	0%	0%	0%	100%	0%	0%	0%	0%	0%	100%	0%	0%
	Shoulder	0%	0%	0%	0%	100%	0%	0%	0%	0%	0%	100%	0%
	Off-Peak	0%	0%	0%	0%	0%	100%	0%	0%	0%	0%	0%	100%
Overall Avg		0%	0%	2%	33%	33%	32%	0%	0%	4%	33%	33%	29%

Attachment 5
Total Energy Sales in MW.h

SURPLUS ENERGY PROGRAM
TOTAL ENERGY SALES IN MW.H

Week Beginning	Peak	Shoulder	Off-Peak	Total
November 1, 2007	52	140	93	284
November 5, 2007	142	222	175	539
November 12, 2007	133	227	170	530
November 19, 2007	170	292	225	687
November 26, 2007	211	355	287	853
December 3, 2007	194	312	276	782
December 10, 2007	180	301	248	730
December 17, 2007	165	280	238	684
December 24, 2007	110	384	248	741
December 31, 2007	148	328	237	713
January 7, 2008	172	304	247	723
January 14, 2008	205	353	300	857
January 21, 2008	208	314	288	810
January 28, 2008	215	345	303	864
February 4, 2008	197	341	293	830
February 11, 2008	220	332	299	851
February 18, 2008	156	350	279	786
February 25, 2008	180	295	253	728
March 3, 2008	199	308	278	785
March 10, 2008	155	254	210	619
March 17, 2008	111	278	185	575
March 24, 2008	90	193	139	422
March 31, 2008	90	146	112	349
April 7, 2008	80	127	96	303
April 14, 2008	80	142	103	324
April 21, 2008	108	179	131	418
April 28, 2008	112	181	136	430
May 5, 2008	106	183	143	432
May 12, 2008	87	148	116	350
May 19, 2008	70	150	103	323
May 26, 2008	80	128	86	294
June 2, 2008	71	98	63	233
June 9, 2008	37	65	41	144
June 16, 2008	43	59	33	136

SURPLUS ENERGY PROGRAM
TOTAL ENERGY SALES IN MW.H

Week Beginning	Peak	Shoulder	Off-Peak	Total
June 23, 2008	34	42	18	93
June 30, 2008	27	45	20	93
July 7, 2008	31	44	19	94
July 14, 2008	29	36	14	79
July 21, 2008	29	36	14	79
July 28, 2008	32	43	16	92
August 4, 2008	30	46	17	93
August 11, 2008	38	42	13	94
August 18, 2008	39	56	17	112
August 25, 2008	47	55	18	120
September 1, 2008	37	56	21	114
September 8, 2008	45	61	24	130
September 15, 2008	60	86	42	187
September 22, 2008	53	82	42	178
September 29, 2008	66	101	53	221
October 6, 2008	79	140	76	295
October 13, 2008	77	172	104	352
October 20, 2008	108	181	126	415
October 27, 2008	127	134	112	374
Total*	5,569	9,575	7,203	22,347

* Totals may not add up due to rounding.

SURPLUS ENERGY PROGRAM
ENERGY CHARGE REVENUE

Week Beginning	Peak	Shoulder	Off-Peak	Total
November 1, 2007	\$3,444	\$5,995	\$1,681	\$11,120
November 5, 2007	\$9,904	\$9,736	\$3,194	\$22,834
November 12, 2007	\$8,867	\$9,690	\$3,183	\$21,740
November 19, 2007	\$11,884	\$14,653	\$4,442	\$30,979
November 26, 2007	\$16,203	\$18,868	\$6,269	\$41,340
December 3, 2007	\$15,053	\$16,958	\$6,903	\$38,915
December 10, 2007	\$16,902	\$19,712	\$8,837	\$45,450
December 17, 2007	\$13,690	\$14,233	\$8,438	\$36,361
December 24, 2007	\$5,596	\$14,958	\$7,457	\$28,011
December 31, 2007	\$8,954	\$14,030	\$7,014	\$29,999
January 7, 2008	\$11,314	\$13,978	\$7,013	\$32,305
January 14, 2008	\$14,234	\$15,538	\$8,460	\$38,232
January 21, 2008	\$22,948	\$23,901	\$12,967	\$59,816
January 28, 2008	\$19,402	\$19,336	\$10,422	\$49,160
February 4, 2008	\$14,084	\$15,843	\$8,770	\$38,697
February 11, 2008	\$17,230	\$16,959	\$10,444	\$44,633
February 18, 2008	\$13,062	\$18,758	\$9,911	\$41,731
February 25, 2008	\$16,379	\$18,530	\$10,146	\$45,055
March 3, 2008	\$16,643	\$17,475	\$10,509	\$44,627
March 10, 2008	\$12,867	\$15,126	\$9,411	\$37,403
March 17, 2008	\$8,921	\$15,507	\$8,051	\$32,480
March 24, 2008	\$7,524	\$11,652	\$6,306	\$25,481
March 31, 2008	\$7,391	\$9,639	\$4,982	\$22,012
April 7, 2008	\$6,118	\$8,856	\$3,484	\$18,458
April 14, 2008	\$6,107	\$9,918	\$3,725	\$19,750
April 21, 2008	\$8,771	\$9,703	\$4,682	\$23,156
April 28, 2008	\$9,288	\$10,415	\$4,820	\$24,523
May 5, 2008	\$8,387	\$9,883	\$4,358	\$22,629
May 12, 2008	\$6,021	\$8,060	\$2,878	\$16,959
May 19, 2008	\$4,494	\$7,905	\$2,603	\$15,002
May 26, 2008	\$5,234	\$6,455	\$2,480	\$14,169
June 2, 2008	\$5,134	\$5,020	\$1,582	\$11,736
June 9, 2008	\$3,069	\$3,334	\$1,180	\$7,583
June 16, 2008	\$3,274	\$3,076	\$739	\$7,088
June 23, 2008	\$2,364	\$1,896	\$372	\$4,632

**SURPLUS ENERGY PROGRAM
ENERGY CHARGE REVENUE**

Week Beginning	Peak	Shoulder	Off-Peak	Total
June 30, 2008	\$2,150	\$2,267	\$362	\$4,779
July 7, 2008	\$3,356	\$2,792	\$382	\$6,530
July 14, 2008	\$3,144	\$1,895	\$271	\$5,311
July 21, 2008	\$2,909	\$1,473	\$159	\$4,541
July 28, 2008	\$3,295	\$2,337	\$280	\$5,913
August 4, 2008	\$3,258	\$2,643	\$255	\$6,155
August 11, 2008	\$3,728	\$2,288	\$191	\$6,207
August 18, 2008	\$3,893	\$3,157	\$262	\$7,313
August 25, 2008	\$3,828	\$2,622	\$252	\$6,702
September 1, 2008	\$2,865	\$2,599	\$283	\$5,747
September 8, 2008	\$3,213	\$2,442	\$287	\$5,942
September 15, 2008	\$3,538	\$3,370	\$496	\$7,404
September 22, 2008	\$2,985	\$3,373	\$494	\$6,851
September 29, 2008	\$3,891	\$4,328	\$775	\$8,994
October 6, 2008	\$4,592	\$5,802	\$1,429	\$11,823
October 13, 2008	\$4,101	\$6,597	\$1,930	\$12,628
October 20, 2008	\$6,442	\$7,104	\$2,259	\$15,805
October 27, 2008	\$8,223	\$5,784	\$2,752	\$16,760
Total*	\$430,171	\$498,468	\$220,833	\$1,149,472

* Totals may not add up due to rounding.

Attachment 7
Distribution Charge Revenue

SURPLUS ENERGY PROGRAM
DISTRIBUTION CHARGE REVENUE

Week Beginning	Peak	Shoulder	Off-Peak	Total
November 1, 2007	\$302	\$826	\$562	\$1,690
November 5, 2007	\$821	\$1,307	\$1,058	\$3,186
November 12, 2007	\$770	\$1,352	\$1,031	\$3,153
November 19, 2007	\$1,001	\$1,760	\$1,365	\$4,126
November 26, 2007	\$1,262	\$2,157	\$1,743	\$5,162
December 3, 2007	\$1,150	\$1,882	\$1,672	\$4,703
December 10, 2007	\$1,073	\$1,824	\$1,504	\$4,400
December 17, 2007	\$994	\$1,708	\$1,454	\$4,157
December 24, 2007	\$673	\$2,357	\$1,518	\$4,548
December 31, 2007	\$894	\$1,997	\$1,444	\$4,336
January 7, 2008	\$1,024	\$1,842	\$1,501	\$4,367
January 14, 2008	\$1,218	\$2,134	\$1,816	\$5,168
January 21, 2008	\$1,240	\$1,900	\$1,751	\$4,891
January 28, 2008	\$1,295	\$2,094	\$1,845	\$5,234
February 4, 2008	\$1,174	\$2,068	\$1,780	\$5,023
February 11, 2008	\$1,307	\$2,011	\$1,812	\$5,130
February 18, 2008	\$931	\$2,129	\$1,697	\$4,757
February 25, 2008	\$1,065	\$1,780	\$1,541	\$4,385
March 3, 2008	\$1,190	\$1,863	\$1,690	\$4,742
March 10, 2008	\$926	\$1,541	\$1,281	\$3,748
March 17, 2008	\$672	\$1,659	\$1,124	\$3,455
March 24, 2008	\$522	\$1,164	\$841	\$2,527
March 31, 2008	\$525	\$866	\$670	\$2,061
April 7, 2008	\$460	\$734	\$575	\$1,770
April 14, 2008	\$471	\$862	\$626	\$1,958
April 21, 2008	\$634	\$1,077	\$797	\$2,508
April 28, 2008	\$643	\$1,071	\$824	\$2,539
May 5, 2008	\$599	\$1,077	\$867	\$2,544
May 12, 2008	\$477	\$859	\$700	\$2,036
May 19, 2008	\$375	\$868	\$619	\$1,862
May 26, 2008	\$418	\$712	\$513	\$1,643
June 2, 2008	\$359	\$507	\$377	\$1,243
June 9, 2008	\$181	\$348	\$246	\$776
June 16, 2008	\$205	\$305	\$195	\$705

**SURPLUS ENERGY PROGRAM
DISTRIBUTION CHARGE REVENUE**

Week Beginning	Peak	Shoulder	Off-Peak	Total
June 23, 2008	\$145	\$200	\$104	\$449
June 30, 2008	\$117	\$226	\$114	\$457
July 7, 2008	\$132	\$210	\$109	\$451
July 14, 2008	\$119	\$163	\$78	\$360
July 21, 2008	\$118	\$169	\$77	\$365
July 28, 2008	\$132	\$191	\$90	\$413
August 4, 2008	\$122	\$206	\$94	\$421
August 11, 2008	\$146	\$175	\$67	\$388
August 18, 2008	\$152	\$236	\$90	\$478
August 25, 2008	\$178	\$230	\$93	\$502
September 1, 2008	\$152	\$258	\$114	\$523
September 8, 2008	\$183	\$274	\$130	\$586
September 15, 2008	\$275	\$444	\$244	\$963
September 22, 2008	\$247	\$422	\$247	\$917
September 29, 2008	\$318	\$527	\$313	\$1,158
October 6, 2008	\$401	\$778	\$452	\$1,631
October 13, 2008	\$400	\$974	\$624	\$1,999
October 20, 2008	\$570	\$1,029	\$761	\$2,360
October 27, 2008	\$689	\$748	\$678	\$2,115
Total*	\$31,447	\$56,102	\$43,518	\$131,068

* Totals may not add up due to rounding.

Attachment 8
Spot Market Energy Revenues Vs. Costs

SURPLUS ENERGY PROGRAM
SPOT MARKET ENERGY REVENUES VS COSTS

Week Beginning	Spot Market Energy Sales (MW.H)	SEP Sales*	Value of Spot Market Energy to MH	Total
November 1, 2007	284	\$11,120	\$9,255	\$1,865
November 5, 2007	539	\$22,834	\$26,100	(\$3,266)
November 12, 2007	530	\$21,740	\$20,107	\$1,633
November 19, 2007	687	\$30,979	\$22,174	\$8,805
November 26, 2007	853	\$41,340	\$51,382	(\$10,042)
December 3, 2007	782	\$38,915	\$62,491	(\$23,576)
December 10, 2007	730	\$45,450	\$45,053	\$397
December 17, 2007	684	\$36,361	\$34,300	\$2,061
December 24, 2007	741	\$28,011	\$23,194	\$4,817
December 31, 2007	713	\$29,999	\$31,453	(\$1,454)
January 7, 2008	723	\$32,305	\$27,765	\$4,540
January 14, 2008	857	\$38,232	\$47,432	(\$9,200)
January 21, 2008	810	\$59,816	\$49,626	\$10,191
January 28, 2008	864	\$49,160	\$51,430	(\$2,270)
February 4, 2008	830	\$38,697	\$39,144	(\$447)
February 11, 2008	851	\$44,633	\$54,377	(\$9,745)
February 18, 2008	786	\$41,731	\$51,409	(\$9,679)
February 25, 2008	728	\$45,055	\$42,371	\$2,685
March 3, 2008	785	\$44,627	\$56,178	(\$11,551)
March 10, 2008	619	\$37,403	\$38,384	(\$981)
March 17, 2008	575	\$32,480	\$34,912	(\$2,433)
March 24, 2008	422	\$25,481	\$23,275	\$2,207
March 31, 2008	349	\$22,012	\$16,451	\$5,561
April 7, 2008	303	\$18,458	\$17,554	\$904
April 14, 2008	324	\$19,750	\$16,122	\$3,628
April 21, 2008	418	\$23,156	\$19,489	\$3,667
April 28, 2008	430	\$24,523	\$18,190	\$6,333
May 5, 2008	432	\$22,629	\$19,204	\$3,425
May 12, 2008	350	\$16,959	\$14,139	\$2,820
May 19, 2008	323	\$15,002	\$9,949	\$5,053
May 26, 2008	294	\$14,169	\$8,740	\$5,429
June 2, 2008	233	\$11,736	\$11,363	\$373
June 9, 2008	144	\$7,583	\$4,185	\$3,398

**SURPLUS ENERGY PROGRAM
SPOT MARKET ENERGY REVENUES VS COSTS**

Week Beginning	Spot Market Energy Sales (MW.H)	SEP Sales*	Value of Spot Market Energy to MH	Total
June 16, 2008	136	\$7,088	\$4,065	\$3,023
June 23, 2008	93	\$4,632	\$5,282	(\$650)
June 30, 2008	93	\$4,779	\$3,679	\$1,100
July 7, 2008	94	\$6,530	\$5,445	\$1,085
July 14, 2008	79	\$5,311	\$5,481	(\$171)
July 21, 2008	79	\$4,541	\$4,779	(\$238)
July 28, 2008	92	\$5,913	\$6,215	(\$302)
August 4, 2008	93	\$6,155	\$5,161	\$995
August 11, 2008	94	\$6,207	\$4,454	\$1,753
August 18, 2008	112	\$7,313	\$6,078	\$1,235
August 25, 2008	120	\$6,702	\$5,329	\$1,373
September 1, 2008	114	\$5,747	\$3,695	\$2,052
September 8, 2008	130	\$5,942	\$4,598	\$1,344
September 15, 2008	187	\$7,404	\$7,184	\$220
September 22, 2008	178	\$6,851	\$7,140	(\$289)
September 29, 2008	221	\$8,994	\$6,855	\$2,139
October 6, 2008	295	\$11,823	\$8,549	\$3,275
October 13, 2008	352	\$12,628	\$12,998	(\$370)
October 20, 2008	415	\$15,805	\$16,635	(\$830)
October 27, 2008	374	\$16,760	\$17,312	(\$552)
Total**	22,347	\$1,149,472	\$1,138,131	\$11,340

* Sales figures are based on the revenue received from the Energy Charge only. They do not include revenues from Distribution and Basic Charges.

** Totals may not add up due to rounding.