

REPORT TO THE PUBLIC UTILITIES BOARD

SURPLUS ENERGY PROGRAM

NOVEMBER 1, 2015 – OCTOBER 31, 2016

FEBRUARY 2017



TABLE OF CONTENTS

	<u>Page Number</u>
BACKGROUND	1
SUMMARY OF FINDINGS	1
DESCRIPTION OF PROGRAM.....	3
Eligibility:	3
Billing:	3
PROGRAM SUBSCRIPTION	4
POTENTIAL CUSTOMERS	5
CUSTOMER EXPERIENCE	5
SEP ENERGY PRICES	5
SOURCE OF SUPPLY FOR SEP ENERGY	8
SEP SALES	9
YEAR-TO-DATE RESULTS.....	10
Attachment 1 - SEP: Chronology of PUB Directives, MH Applications, and Reports...	12
Attachment 2 - PUB Approved Weekly SEP Rates.....	15
Attachment 3 - SEP Energy Supply Source.....	17
Attachment 4 - Total Energy Sales in MWh.....	23
Attachment 5 - Energy Charge Revenue	25
Attachment 6 - Distribution Charge Revenue.....	27
Attachment 7 - SEP Energy Revenues vs. Value of Energy.....	29

**REPORT TO PUBLIC UTILITIES BOARD
SURPLUS ENERGY PROGRAM
NOVEMBER 1, 2015 - OCTOBER 31, 2016**

BACKGROUND

The Surplus Energy Program (“SEP”) is a rate program that enables a qualifying customer to purchase surplus energy at market prices that are determined on a weekly basis for peak, shoulder, and off-peak periods. Customers began accepting service under the Terms and Conditions of this program on December 4, 2000.

The Public Utilities Board of Manitoba (“PUB”) approved SEP Option 2 and Option 3 as permanent rate programs in Order 43/13. In that same Order, the PUB gave interim approval to changes to SEP Option 1, and that Option currently remains approved on an interim basis.

Manitoba Hydro files annual reports on the status of the program. This report covers the period November 1, 2015 to October 31, 2016. For a brief history of PUB Orders and Manitoba Hydro’s applications and reports with respect to the SEP program, please see Attachment 1.

SUMMARY OF FINDINGS

The SEP program is intended to be a revenue neutral program that offers customers choice and access to surplus energy at prices that reflect Manitoba Hydro’s short term marginal cost of energy. To obtain the full benefits of the program customers need to have sufficient flexibility in their operation to take advantage of lower price periods. The SEP program is not intended as a rate discount program; however, the energy market and Manitoba Hydro supply conditions during the past year were such that all SEP customers experienced a lower annual bill when compared to service under the respective General Service firm rate.

Manitoba Hydro has determined that the value of surplus energy provided to SEP customers during the current one-year reporting period was \$605,116. Total revenue collected under the SEP program was \$631,433, excluding Basic Charges and Distribution Charges, resulting in net energy revenue to Manitoba Hydro of \$26,316.

The majority of SEP energy supply for all three pricing periods was sourced from displaced exports. For the Peak period, 95% was sourced through displaced exports and the remaining 5%

was sourced through avoided spill. For the Shoulder period, 91% was sourced through displaced exports and 9% through avoided spill. For the Off-Peak period, 83% of energy was sourced through displaced exports and 17% through avoided spill.

The main factors that affected SEP prices during the current reporting year were extra-provincial market prices, water conditions, weather driven electrical load, and transmission constraints to neighboring markets. Overall water conditions during this reporting period were average to above average. Inflows were above average over the 2015/16 winter, below average through spring and early summer, and transitioned to well above average in the fall of 2016. Saskatchewan River, Lake Winnipeg and Nelson River basins experienced significant precipitation events in late September and early October 2016, which sustained above average flows through fall 2016. Spill conditions occurred in late summer and continued into October due to high inflows, full reservoirs and transmission line outages. Energy sourced from avoided spill occurs during periods when tie-lines to neighboring markets are fully utilized and firm load has been met, combined with unused hydro generation capacity.

Average 2015/16 SEP Peak and Shoulder prices were the 2nd lowest of the 16 years the program has been available, with lower average prices having been experienced only in the 2012 period. Average 2015/16 Off-Peak prices were the 4th lowest, with lower average prices only in years 2011 to 2013.

For reference, in the 2015/16 reporting period, SEP General Service Medium average prices were:

- On-Peak 3.288 ¢/kWh, ranging from 2.270 ¢/kWh to 5.193 ¢/kWh;
- Shoulder 2.650 ¢/kWh, ranging from 2.015 ¢/kWh to 3.636 ¢/kWh, and;
- Off-Peak 1.732 ¢/kWh, ranging from 0.963 ¢/kWh to 2.939 ¢/kWh.

There was no interruption in service during the 12 month reporting period.

DESCRIPTION OF PROGRAM

Eligibility:

The Program offers surplus energy at market prices on an interruptible basis to Manitoba Hydro General Service customers. Eligible customers may participate in one of the following three options:

- 1) Industrial Load - Option 1 – This option is available to industrial loads whose Total Demand is 1,000 kVA or greater. Total Demand is defined as the Reference Level of Demand plus the level of demand associated with SEP. Under this option customers may only designate 25%¹ of their total load as SEP load, with the remaining 75% being their Reference Demand.
- 2) Heating Load - Option 2 – This option is available to electrical loads of 200 kW or greater. The electricity is to be used for space and/or water heating only and must be separately metered from the customer's firm load. Customers must have an alternate back-up energy source capable of heating the entire load in the event of an interruption.
- 3) Self-Generation Displacement - Option 3 – This option is available to industrial intermittent loads with total demand between 200 kW to 50,000 kW. Load would not be considered intermittent if the average monthly load factor exceeds 25%. The load must be separately metered from the customer's firm load and must be fully backed up by generating equipment which is leased or owned by the customer and is located on the premises of the SEP load.

Billing:

All SEP customers are billed a monthly Basic Charge, Distribution Charge and an Energy Charge. The Basic Charge is \$50.00 per month for customers with connected loads of 1,000 kVA or less, and \$100.00 per month for connected loads greater than 1,000 kVA. The Distribution Charge per kilowatt-hour ranges from 0.06¢ to 0.62¢ dependent on customer class. The Energy Charge per kilowatt-hour, applicable to three pricing periods, varies based on market prices from week-to-week. The three pricing periods are peak, shoulder and off-peak, and are further defined by season as shown in the following table:

¹ Customers can designate up to 50% of their load as SEP provided they have an alternate back-up source of energy to supply the amount in excess of the 25%.

	Summer (May 1 – October 31)	Winter (November 1 – April 30)
Peak	12:01 to 20:00 hours Monday to Friday Except Statutory Holidays	07:01 to 11:00 hours and 16:01 to 20:00 hours Monday to Friday Except Statutory Holidays
Shoulder	All hours except Peak, every day from 07:01 to 23:00	
Off-Peak	All night time hours from 23:01 to 07:00 hours	

PROGRAM SUBSCRIPTION

There were 30 customers on SEP for this reporting period, the same as the last reporting period. Of the 30 customers, 26 are Option 2 (Heating Load) and 4 are Option 3 (Self-Generation Displacement). There are no Option 1 (Industrial Load) customers.

The Option 2 customers are classed as General Service Medium Demand and fall under the following industry types:

Agricultural and Related Service Industries	7 customers
Educational Service Industries	12 customers
Local Government Service Industries	4 customers
Manufacturing	2 customers
Retail Food, Beverage and Drug Industries	1 customer

The Option 3 customers are in the General Service Large Demand 750 V – 30 kV class under the following industry types:

Quarry & Sand Pit Industries	3 customers
Paper & Allied Products Industries	1 customer

All customers have signed a waiver warranting that they have appropriate back-up facilities on site to support their loads in the event of an interruption.

POTENTIAL CUSTOMERS

Several customers in the agricultural industry who currently use coal are assessing alternate fuel choices. They may consider SEP in the future due to the Manitoba government's proposed ban on the use of coal for space and water heating in 2017.

CUSTOMER EXPERIENCE

Manitoba Hydro is not aware of any customer complaints regarding SEP.

There have been no difficulties encountered with communication of pricing information to customers on a timely basis. Customers are faxed or emailed on Wednesday of each week, providing prices that will be in place for the following week beginning Sunday at midnight.

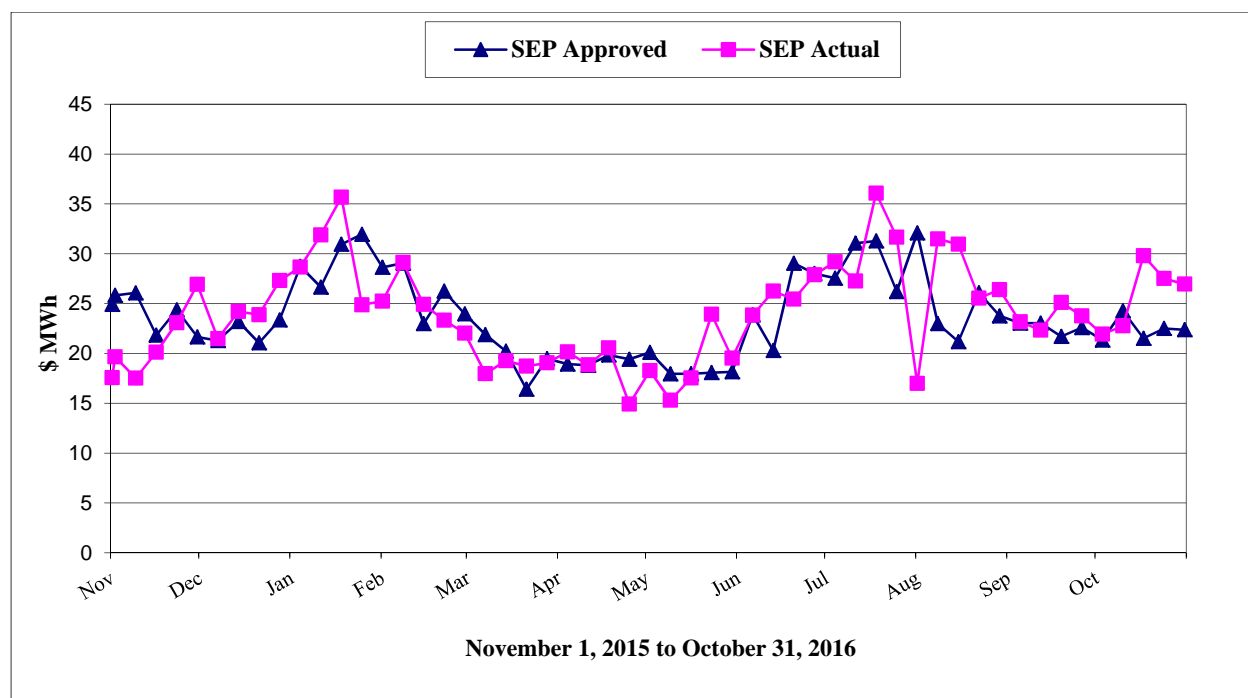
SEP ENERGY PRICES

Each Wednesday Manitoba Hydro applies to the PUB for interim *ex parte* approval of the SEP Energy Rates to be in effect the following Monday through Sunday. The following table compares the weekly average prices approved by the PUB with the actual average after-the-fact prices throughout the reporting period. Attachment 2 provides the weekly rates for each pricing period for both Medium and Large 750 V - 30 kV classes. The information is also shown graphically on page 7.

SEP - Average Weekly Rate Per MWh				
Week Beginning	SEP Approved	SEP Actual	Difference	PUB Order No.
November 1, 2015	\$24.91	\$17.56	\$7.35	104/15
November 2, 2015	\$25.82	\$19.65	\$6.17	105/15
November 9, 2015	\$26.07	\$17.51	\$8.56	111/15
November 16, 2015	\$21.83	\$20.12	\$1.71	113/15
November 23, 2015	\$24.37	\$23.06	\$1.31	116/15
November 30, 2015	\$21.65	\$26.92	(\$5.27)	122/15
December 7, 2015	\$21.28	\$21.48	(\$0.20)	134/15
December 14, 2015	\$23.19	\$24.20	(\$1.01)	135/15
December 21, 2015	\$21.06	\$23.87	(\$2.81)	138/15
December 28, 2015	\$23.36	\$27.30	(\$3.94)	143/15
January 4, 2016	\$28.74	\$28.66	\$0.08	145/15

SEP - Average Weekly Rate Per MWh				
Week Beginning	SEP Approved	SEP Actual	Difference	PUB Order No.
January 11, 2016	\$26.65	\$31.88	(\$5.23)	2/16
January 18, 2016	\$30.94	\$35.67	(\$4.73)	6/16
January 25, 2016	\$31.95	\$24.87	\$7.08	10/16
February 1, 2016	\$28.63	\$25.24	\$3.39	13/16
February 8, 2016	\$29.06	\$29.12	(\$0.06)	19/16
February 15, 2016	\$22.98	\$24.92	(\$1.94)	20/16
February 22, 2016	\$26.24	\$23.33	\$2.91	22/16
February 29, 2016	\$23.96	\$22.03	\$1.93	25/16
March 7, 2016	\$21.88	\$17.96	\$3.92	29/16
March 14, 2016	\$20.22	\$19.27	\$0.95	32/16
March 21, 2016	\$16.40	\$18.71	(\$2.31)	35/16
March 28, 2016	\$19.47	\$19.05	\$0.42	42/16
April 4, 2016	\$18.93	\$20.15	(\$1.22)	44/16
April 11, 2016	\$18.80	\$18.84	(\$0.04)	47/16
April 18, 2016	\$19.84	\$20.54	(\$0.70)	50/16
April 25, 2016	\$19.41	\$14.92	\$4.49	51/16
May 2, 2016	\$20.10	\$18.26	\$1.84	58/16
May 9, 2016	\$17.95	\$15.29	\$2.66	62/16
May 16, 2016	\$17.96	\$17.53	\$0.43	66/16
May 23, 2016	\$18.07	\$23.91	(\$5.84)	67/16
May 30, 2016	\$18.15	\$19.52	(\$1.37)	69/16
June 6, 2016	\$23.87	\$23.83	\$0.04	70/16
June 13, 2016	\$20.29	\$26.24	(\$5.95)	73/16
June 20, 2016	\$29.04	\$25.44	\$3.60	77/16
June 27, 2016	\$28.01	\$27.89	\$0.12	80/16
July 4, 2016	\$27.55	\$29.18	(\$1.63)	81/16
July 11, 2016	\$31.06	\$27.26	\$3.80	82/16
July 18, 2016	\$31.28	\$36.07	(\$4.79)	87/16
July 25, 2016	\$26.20	\$31.65	(\$5.45)	92/16
August 1, 2016	\$32.09	\$16.99	\$15.10	101/16
August 8, 2016	\$22.98	\$31.48	(\$8.50)	103/16
August 15, 2016	\$21.18	\$30.94	(\$9.76)	109/16
August 22, 2016	\$26.09	\$25.54	\$0.55	110/16

SEP - Average Weekly Rate Per MWh				
Week Beginning	SEP Approved	SEP Actual	Difference	PUB Order No.
August 29, 2016	\$23.76	\$26.39	(\$2.63)	112/16
September 5, 2016	\$23.03	\$23.16	(\$0.13)	113/16
September 12, 2016	\$23.04	\$22.33	\$0.71	116/16
September 19, 2016	\$21.70	\$25.11	(\$3.41)	118/16
September 26, 2016	\$22.59	\$23.75	(\$1.16)	119/16
October 3, 2016	\$21.34	\$21.92	(\$0.58)	124/16
October 10, 2016	\$24.27	\$22.76	\$1.51	126/16
October 17, 2016	\$21.51	\$29.80	(\$8.29)	129/16
October 24, 2016	\$22.50	\$27.51	(\$5.01)	133/16
October 31, 2016	\$22.37	\$26.95	(\$4.58)	138/16
Average	\$23.62	\$23.95	(\$0.33)	



SOURCE OF SUPPLY FOR SEP ENERGY

As part of its weekly Application to the PUB, Manitoba Hydro is required to indicate the expected source of supply for SEP energy that is used to derive the marginal cost of energy for the weekly SEP energy rates. The following summary table compares the expected source of supply, which was the basis of the weekly Applications, to the actual source of supply as determined after-the-fact. A more detailed analysis by week is provided in Attachment 3.

SEP Energy Supply Source (%)														
November 1, 2015 to October 31, 2016														
	Actual							Forecast						
	Imports			Exports			Avoided Spill	Imports			Exports			Avoided Spill
	Peak	Shoulder	Off-Peak	Peak	Shoulder	Off-Peak		Peak	Shoulder	Off-Peak	Peak	Shoulder	Off-Peak	
Peak	0%	0%	0%	95%	0%	0%	5%	0%	0%	0%	99%	0%	0%	1%
Shoulder	0%	0%	0%	0%	91%	0%	9%	0%	0%	0%	0%	95%	0%	5%
Off-Peak	0%	0%	0%	0%	0%	83%	17%	0%	0%	0%	0%	0%	90%	10%

Throughout the reporting period SEP energy was sourced mostly from displaced exports: 95% Peak, 91% Shoulder, and 83% Off-Peak. No energy was sourced from imports during this reporting period. The remainder of the energy supply was sourced from avoided spill: 5% Peak, 9% Shoulder, and 17% Off-Peak. Avoided spill occurs during periods when tie-lines to neighboring markets are fully utilized and firm load has been met, combined with unused hydro generation capacity. In general, avoided spill is more frequently experienced during Off-Peak periods due to low over-night Manitoba loads.

Overall water conditions during this reporting period were average to above average. Inflows were above average over the 2015/16 winter, below average through spring and early summer, and transitioned to well above average in the fall of 2016. Saskatchewan River, Lake Winnipeg and Nelson River basins experienced significant precipitation events in late September and early October 2016, which sustained above average flows through fall 2016. Spill conditions occurred in late summer and continued into October due to high inflows, full reservoirs and transmission line outages.

SEP SALES

Total energy and revenue of SEP sales over the period November 1, 2015 to October 31, 2016 were 25,253 MWh, and \$799,579 (comprised of \$631,433 in Energy Charges, \$148,346 in Distribution Charges and \$19,800 in Basic Charges). The distribution of the energy and revenue by pricing period is shown in the following table. A more detailed analysis by week is provided in Attachments 4, 5 and 6.

Period	SEP Energy Sales MWh	Revenue	
		Distribution Charge	Energy Charge
Peak	6,177	\$35,225	\$194,985
Shoulder	11,085	\$65,114	\$289,466
Off Peak	7,991	\$48,008	\$146,982
Total	25,253	\$148,346	\$631,433

Over the period November 1, 2015 through to October 31, 2016, the value of SEP energy (using after-the-fact prices) was \$605,116. Revenue from energy sales was \$631,433 resulting in net revenue to Manitoba Hydro of \$26,316 for the year. The following table summarizes Manitoba Hydro net revenue for each time-of-use period. A more detailed analysis by week is found in Attachment 7.

SEP Energy Revenues versus Value of Energy				
Period	SEP Energy Sales MWh	SEP Revenue Sales (Energy Only)	Value of SEP Energy to Manitoba Hydro	Manitoba Hydro Net Energy Revenue
Peak	6,177	\$194,985	\$185,525	\$9,460
Shoulder	11,085	\$289,466	\$271,000	\$18,466
Off Peak	7,991	\$146,982	\$148,591	(\$1,609)
Total	25,253	\$631,433	\$605,116	\$26,316

YEAR-TO-DATE RESULTS

The following is a summary of the program since its inception on December 4, 2000.

Program Year	Number of Services		
	General Service Medium	General Service Large (750 V to 30 kV)	Total
Dec 4, 2000 to Oct 31, 2001	24	4	28
Nov 1, 2001 to Oct 31, 2002	27	6	33
Nov 1, 2002 to Oct 31, 2003	27	6	33
Nov 1, 2003 to Oct 31, 2004	25	6	31
Nov 1, 2004 to Oct 31, 2005	22	6	28
Nov 1, 2005 to Oct 31, 2006	22	6	28
Nov 1, 2006 to Oct 31, 2007	22	5	27
Nov 1, 2007 to Oct 31, 2008	20	5	25
Nov 1, 2008 to Oct 31, 2009	19	5	24
Nov 1, 2009 to Oct 31, 2010	19	5	24
Nov 1, 2010 to Oct 31, 2011	21	5	26
Nov 1, 2011 to Oct 31, 2012	24	5	29
Nov 1, 2012 to Oct 31, 2013	25	3	28
Nov 1, 2013 to Oct 31, 2014	25	3	28
Nov 1, 2014 to Oct 31, 2015	26	4	30
Nov 1, 2015 to Oct 31, 2016	26	4	30

Program Year	SEP Revenue Sales			
	Basic Charge	Distribution Charge	Energy Charge	Total Revenue
Dec 4, 2000 to Oct 31, 2001	\$15,436	\$105,948	\$880,033	\$1,001,418
Nov 1, 2001 to Oct 31, 2002	\$20,169	\$164,565	\$959,529	\$1,144,263
Nov 1, 2002 to Oct 31, 2003	\$21,330	\$111,347	\$1,061,522	\$1,194,200
Nov 1, 2003 to Oct 31, 2004	\$21,700	\$112,572	\$1,201,434	\$1,335,707
Nov 1, 2004 to Oct 31, 2005	\$20,180	\$147,530	\$1,277,816	\$1,445,526
Nov 1, 2005 to Oct 31, 2006	\$19,200	\$134,445	\$1,248,314	\$1,401,959
Nov 1, 2006 to Oct 31, 2007	\$19,178	\$128,724	\$1,414,933	\$1,562,835
Nov 1, 2007 to Oct 31, 2008	\$17,150	\$131,068	\$1,149,472	\$1,297,689
Nov 1, 2008 to Oct 31, 2009	\$16,790	\$139,021	\$932,076	\$1,087,887
Nov 1, 2009 to Oct 31, 2010	\$16,800	\$115,817	\$594,374	\$726,991

Program Year	SEP Revenue Sales			
	Basic Charge	Distribution Charge	Energy Charge	Total Revenue
Nov 1, 2010 to Oct 31, 2011	\$17,650	\$152,400	\$672,493	\$842,543
Nov 1, 2011 to Oct 31, 2012	\$18,927	\$154,379	\$614,629	\$787,935
Nov 1, 2012 to Oct 31, 2013	\$19,450	\$172,097	\$793,148	\$984,695
Nov 1, 2013 to Oct 31, 2014	\$19,200	\$175,180	\$1,055,103	\$1,249,482
Nov 1, 2014 to Oct 31, 2015	\$19,203	\$152,015	\$770,866	\$942,084
Nov 1, 2015 to Oct 31, 2016	\$19,800	\$148,346	\$631,433	\$799,579
Total	\$302,163	\$2,245,455	\$15,257,174	\$17,804,793

Program Year	SEP Energy Sales vs. Value of Energy			
	SEP Sales		Value to MH Marginal Cost	Net Revenue
	MWh	Energy Revenue		
Dec 4, 2000 to Oct 31, 2001	18,123	\$880,033	\$891,308	(\$11,275)
Nov 1, 2001 to Oct 31, 2002	28,808	\$959,529	\$994,233	(\$34,704)
Nov 1, 2002 to Oct 31, 2003	19,473	\$1,061,522	\$1,056,307	\$5,215
Nov 1, 2003 to Oct 31, 2004	19,328	\$1,201,434	\$992,650	\$208,784
Nov 1, 2004 to Oct 31, 2005	25,013	\$1,277,816	\$1,241,792	\$36,024
Nov 1, 2005 to Oct 31, 2006	22,927	\$1,248,314	\$1,161,379	\$86,935
Nov 1, 2006 to Oct 31, 2007	22,152	\$1,414,933	\$1,392,736	\$22,197
Nov 1, 2007 to Oct 31, 2008	22,347	\$1,149,472	\$1,138,131	\$11,340
Nov 1, 2008 to Oct 31, 2009	23,393	\$932,076	\$842,510	\$89,565
Nov 1, 2009 to Oct 31, 2010	19,506	\$594,374	\$577,384	\$16,989
Nov 1, 2010 to Oct 31, 2011	25,568	\$672,493	\$602,184	\$70,309
Nov 1, 2011 to Oct 31, 2012	25,763	\$614,629	\$560,145	\$54,484
Nov 1, 2012 to Oct 31, 2013	28,757	\$793,148	\$772,778	\$20,369
Nov 1, 2013 to Oct 31, 2014	29,371	\$1,055,103	\$1,068,652	(\$13,549)
Nov 1, 2014 to Oct 31, 2015	25,564	\$770,866	\$730,898	\$39,968
Nov 1, 2015 to Oct 31, 2016	25,253	\$631,433	\$605,116	\$26,316
Total	381,346	\$15,257,174	\$14,628,204	\$628,969

Attachment 1 - SEP: Chronology of PUB Directives, MH Applications, and Reports

PUB Order	Date	PUB Findings & MH Applications and Reports Filings
	Oct 25/99	MH files application for approval of the Surplus Energy Program
90/00	Jun 30/00	PUB approves SEP application to March 31, 2004 and directs MH to file annual reports on SEP by no later than January 31 of each year.
	Jul 20/00	MH letter - in response to Order 90/00 MH requests variance of 12 month notice provision to range from 12 to 16 months notice.
132/00	Sep 29/00	The PUB varies Order 90/00 such that an SEP customer who chooses to convert to firm service has various notice period options.
	Oct 26/00	MH files revised Terms & Condition of SEP to be in accordance with Order 90/00 and 132/00. MH also advises its intent to waive requirement for a Professional Engineer Certification of back-up facilities
143/01	Sep 13/01	The PUB approves the revised Terms and Conditions as noted in MH's letter of Oct 26/00.
	Sep 21/01	MH files revised SEP Terms and Conditions as required by Order 143/01
	Nov 30/01	MH files Report #1 on SEP for period Dec 4/00 to Oct 31/01
	Mar 12/03	MH files Report #2 on SEP for period Nov 1/01 to Oct 31/02
	Mar 24/03	MH by correspondence requests SEP be extended to Mar 31/05 on ex parte bases.
153/03	Oct 31/03	PUB approves request for extension of SEP to March 31, 2005 on an interim ex parte basis.
	Jan 29/04	As part of 2004 GRA (Appendix 9.2.2, Volume 3) MH requests SEP program be extended two more years to March 31, 2007. MH files Report #3 on SEP for period Nov 1/02 to Oct 31/03
101/04	Jul 28/04	PUB approves MH's application to extend Terms and Conditions of the SEP, as proposed and amended by MH, until March 31, 2007.
	May 17/05	MH files Report #4 on SEP for period Nov 1/03 to Oct 31/04
	Jan 23/06	MH files Report #5 on SEP for period Nov 1/04 to Oct 31/05
	Apr 20/06	MH applies to extend SEP Terms & Conditions to Mar 31/09
	Sep 7/06	PUB issues letter advising they are prepared to extend SEP to Oct 31/07. Also state their intention to review SEP in upcoming MH GRA.
	Sep 28/06	MH letter requests PUB reconsider their position and extend program, at minimum to October 31, 2008, noting customers need to plan for modifications or elimination of SEP and require minimum 12 months notice period.
173/06	Dec 21/06	PUB approves extension of SEP to the earlier of October 31, 2007 or an application to amend by MH. Advises MH to include a review of SEP in its GRA filing, due no later than August 1, 2007.
	Jan 12/07	MH files Report #6 on SEP for period Nov 1/05 to Oct 31/06
	Aug 1/07	GRA filing - MH requests immediate approval to extend SEP to October 31/08 with final approval to extend the program to March 31/13 as it is expected hearing will not take place until early 2008.

PUB Order	Date	PUB Findings & MH Applications and Reports Filings
136/07	Oct 26/07	PUB approves extension of SEP to April 30, 2009 on an interim basis, unless amended or extended by a further Order of the PUB.
	Feb 5/08	MH files Report #7 on SEP for period Nov 1/06 to Oct 31/07
90/08	Jun 30/08	PUB approves extension of SEP until October 31, 2008, with the application for a further extension to March 31, 2013 to be dealt with in the subsequent Order.
116/08	Jul 29/08	PUB approves extension of the SEP to October 31, 2008; on condition annual reports continue to be provided. Also raises concern with MH's marketing practices that yield extremely low prices for off-peak exports. MH directed to file a report by January 15, 2009 evaluating SEP, including monthly historical data from 2000 to 2008.
	Sep 18/08	MH files application to vary Order 116/08, requesting PUB extend the date for filing of SEP report to February 28, 2009.
150/08	Nov 7/08	PUB agrees to vary deadline date for the SEP report to February 28, 2009 and approves extension of SEP to April 30, 2009. PUB indicates final approval of SEP to March 31, 2013 will follow once receipt and review of the February 28, 2009 SEP Annual Report is complete.
	Mar 4/09	MH files Report #8 on SEP for period Nov 1/07 to Oct 31/08
57/09	Apr 28/09	PUB approves SEP to March 31, 2013
	Mar 11/10	MH files Report #9 on SEP for period Nov 1/08 to Oct 31/09
	May 11/11	MH files Report #10 on SEP for period Nov 1/09 to Oct 31/10
	April 5/12	MH files an application to vary the Terms and Conditions as well as Report #11 on SEP for period Nov 1/10 to Oct 31/11
111/12	Aug 22/12	PUB approved extension of the SEP to March 31, 2014 to allow time for review of the MH's SEP application during MH's 2012/13 and 2013/14 GRA.
	Mar 11/13	MH files Report #12 on SEP for period Nov 1/11 to Oct 31/12
43/13	Apr 26/13	PUB approves SEP Option 1 amendment on an interim basis, to be reviewed at a Cost of Service/Time of Use hearing. PUB approves Option 2 and 3 as a permanent rate offering.
	Jan 31/14	MH files Report #13 on SEP for period Nov 1/12 to Oct 31/13
	Jan 23/15	MH files Report #14 on SEP for period Nov 1/13 to Oct 31/14
73/15	Jul 24/15	PUB deferred giving its final approval of Option 1 amendment as it was the PUB's expectation that the matter would be reviewed in conjunction with the upcoming Cost of Service proceeding. MH to file quarterly reports on factors influencing SEP pricing and include explanation of National Energy Board pricing.
	Dec 22/15	MH files SEP Quarterly Report August 1, 2015 to October 31, 2015
	Mar 10/16	MH files SEP Quarterly Report November 1, 2015 to January 31, 2016
	June 28/16	MH files SEP Quarterly Report February 1, 2015 to April 30, 2016
	Oct 13/16	MH files SEP Quarterly Report May 1, 2015 to July 31, 2016

PUB Order	Date	PUB Findings & MH Applications and Reports Filings
	Dec 6/16	MH files SEP Quarterly Report August 1, 2015 to October 31, 2016

Attachment 2 - PUB Approved Weekly SEP Rates

PUB APPROVED WEEKLY SEP RATES ¢ / kWh						
Week Beginning	General Service Medium			General Service Large 750 V to 30 kV		
	Peak	Shoulder	Off-Peak	Peak	Shoulder	Off-Peak
November 1, 2015	3.449	2.907	1.677	3.403	2.868	1.654
November 2, 2015	3.449	2.907	1.963	3.403	2.868	1.937
November 9, 2015	3.571	2.951	1.986	3.524	2.912	1.959
November 16, 2015	3.089	2.599	1.355	3.048	2.564	1.337
November 23, 2015	3.230	2.639	2.006	3.187	2.604	1.980
November 30, 2015	2.976	2.383	1.657	2.937	2.351	1.635
December 7, 2015	2.960	2.471	1.438	2.920	2.438	1.419
December 14, 2015	3.085	2.578	1.813	3.044	2.544	1.789
December 21, 2015	2.887	2.416	1.559	2.848	2.384	1.538
December 28, 2015	3.063	2.659	1.896	3.023	2.623	1.871
January 4, 2016	3.664	3.127	2.448	3.615	3.086	2.416
January 11, 2016	3.489	3.004	2.073	3.443	2.964	2.045
January 18, 2016	3.961	3.175	2.871	3.909	3.133	2.832
January 25, 2016	4.180	3.636	2.441	4.125	3.588	2.409
February 1, 2016	3.691	3.124	2.401	3.641	3.083	2.369
February 8, 2016	3.394	2.976	2.939	3.349	2.936	2.900
February 15, 2016	3.088	2.593	1.798	3.047	2.558	1.774
February 22, 2016	3.433	2.691	2.383	3.387	2.655	2.352
February 29, 2016	2.928	2.593	2.151	2.889	2.559	2.123
March 7, 2016	2.784	2.319	1.946	2.747	2.289	1.920
March 14, 2016	2.639	2.195	1.685	2.604	2.166	1.663
March 21, 2016	2.270	2.048	0.963	2.240	2.020	0.950
March 28, 2016	2.517	2.091	1.731	2.484	2.063	1.708
April 4, 2016	2.475	2.109	1.506	2.443	2.081	1.486
April 11, 2016	2.457	2.048	1.555	2.424	2.021	1.534
April 18, 2016	2.397	2.187	1.749	2.365	2.158	1.726
April 25, 2016	2.708	2.256	1.303	2.672	2.226	1.286
May 2, 2016	2.872	2.348	1.286	2.834	2.317	1.269
May 9, 2016	2.367	2.098	1.287	2.335	2.070	1.270
May 16, 2016	2.465	2.179	1.117	2.432	2.150	1.102

PUB APPROVED WEEKLY SEP RATES ¢ / kWh						
Week Beginning	General Service Medium			General Service Large 750 V to 30 kV		
	Peak	Shoulder	Off-Peak	Peak	Shoulder	Off-Peak
May 23, 2016	2.621	2.051	1.286	2.586	2.023	1.269
May 30, 2016	2.395	2.189	1.214	2.363	2.160	1.198
June 6, 2016	3.355	2.835	1.507	3.311	2.797	1.487
June 13, 2016	2.798	2.308	1.451	2.761	2.277	1.431
June 20, 2016	4.045	3.220	2.153	3.991	3.177	2.124
June 27, 2016	4.058	3.173	2.005	4.005	3.131	1.978
July 4, 2016	3.987	3.005	1.999	3.934	2.965	1.972
July 11, 2016	4.681	3.364	2.153	4.619	3.319	2.124
July 18, 2016	4.596	3.411	2.222	4.535	3.366	2.193
July 25, 2016	3.925	2.966	1.668	3.873	2.927	1.646
August 1, 2016	5.193	3.572	2.076	5.124	3.525	2.049
August 8, 2016	4.042	2.450	1.230	3.988	2.417	1.213
August 15, 2016	3.996	2.015	1.252	3.942	1.989	1.236
August 22, 2016	4.352	2.947	1.353	4.295	2.908	1.335
August 29, 2016	3.604	2.687	1.484	3.556	2.651	1.464
September 5, 2016	3.350	2.688	1.528	3.306	2.653	1.508
September 12, 2016	3.344	2.659	1.477	3.299	2.624	1.458
September 19, 2016	3.256	2.515	1.303	3.212	2.482	1.286
September 26, 2016	3.221	2.551	1.562	3.178	2.518	1.541
October 3, 2016	3.150	2.428	1.376	3.108	2.396	1.357
October 10, 2016	3.026	2.782	1.971	2.986	2.745	1.945
October 17, 2016	2.903	2.566	1.430	2.864	2.532	1.411
October 24, 2016	3.080	2.620	1.547	3.039	2.585	1.526
October 31, 2016	3.019	2.804	1.310	2.979	2.767	1.293
Average Rate	3.288	2.650	1.732	3.244	2.615	1.709
Maximum Rate	5.193	3.636	2.939	5.124	3.588	2.900
Minimum Rate	2.270	2.015	0.963	2.240	1.989	0.950
Class Rev/kWh	3.137	2.616	1.846	3.253	2.574	1.741

Attachment 3 - SEP Energy Supply Source

SEP Energy Supply Source (%) November 1, 2015 to October 31, 2016															
Week Of		Actual							Forecast						
		Imports			Exports			Avoided Spill	Imports			Exports			Avoided Spill
		Peak	Shoulder	Off-Peak	Peak	Shoulder	Off-Peak		Peak	Shoulder	Off-Peak	Peak	Shoulder	Off-Peak	
Nov 01/15	Peak	0	0	0	0	0	0	0	0	0	0	0	0	0	0
	Shoulder	0	0	0	0	0	0	100	0	0	0	0	100	0	0
	Off-Peak	0	0	0	0	0	0	100	0	0	0	0	0	100	0
Nov 02/15	Peak	0	0	0	100	0	0	0	0	0	0	100	0	0	0
	Shoulder	0	0	0	0	100	0	0	0	0	0	0	100	0	0
	Off-Peak	0	0	0	0	0	100	0	0	0	0	0	0	100	0
Nov 09/15	Peak	0	0	0	100	0	0	0	0	0	0	100	0	0	0
	Shoulder	0	0	0	0	100	0	0	0	0	0	0	100	0	0
	Off-Peak	0	0	0	0	0	100	0	0	0	0	0	0	100	0
Nov 16/15	Peak	0	0	0	100	0	0	0	0	0	0	100	0	0	0
	Shoulder	0	0	0	0	100	0	0	0	0	0	0	100	0	0
	Off-Peak	0	0	0	0	0	100	0	0	0	0	0	0	100	0
Nov 23/15	Peak	0	0	0	100	0	0	0	0	0	0	100	0	0	0
	Shoulder	0	0	0	0	100	0	0	0	0	0	0	100	0	0
	Off-Peak	0	0	0	0	0	100	0	0	0	0	0	0	100	0
Nov 30/15	Peak	0	0	0	100	0	0	0	0	0	0	100	0	0	0
	Shoulder	0	0	0	0	100	0	0	0	0	0	0	100	0	0
	Off-Peak	0	0	0	0	0	100	0	0	0	0	0	0	100	0
Dec 07/15	Peak	0	0	0	100	0	0	0	0	0	0	100	0	0	0
	Shoulder	0	0	0	0	100	0	0	0	0	0	0	100	0	0
	Off-Peak	0	0	0	0	0	100	0	0	0	0	0	0	100	0
Dec 14/15	Peak	0	0	0	100	0	0	0	0	0	0	100	0	0	0
	Shoulder	0	0	0	0	100	0	0	0	0	0	0	100	0	0
	Off-Peak	0	0	0	0	0	100	0	0	0	0	0	0	100	0
Dec 21/15	Peak	0	0	0	100	0	0	0	0	0	0	100	0	0	0
	Shoulder	0	0	0	0	100	0	0	0	0	0	0	100	0	0
	Off-Peak	0	0	0	0	0	100	0	0	0	0	0	0	100	0

SEP Energy Supply Source (%) November 1, 2015 to October 31, 2016															
Week Of		Actual							Forecast						
		Imports			Exports			Avoided Spill	Imports			Exports			Avoided Spill
		Peak	Shoulder	Off-Peak	Peak	Shoulder	Off-Peak		Peak	Shoulder	Off-Peak	Peak	Shoulder	Off-Peak	
Dec 28/15	Peak	0	0	0	100	0	0	0	0	0	0	100	0	0	0
	Shoulder	0	0	0	0	100	0	0	0	0	0	0	100	0	0
	Off-Peak	0	0	0	0	0	100	0	0	0	0	0	0	100	0
Jan 04/16	Peak	0	0	0	100	0	0	0	0	0	0	100	0	0	0
	Shoulder	0	0	0	0	100	0	0	0	0	0	0	100	0	0
	Off-Peak	0	0	0	0	0	100	0	0	0	0	0	0	100	0
Jan 11/16	Peak	0	0	0	100	0	0	0	0	0	0	100	0	0	0
	Shoulder	0	0	0	0	100	0	0	0	0	0	0	100	0	0
	Off-Peak	0	0	0	0	0	100	0	0	0	0	0	0	100	0
Jan 18/16	Peak	0	0	0	100	0	0	0	0	0	0	100	0	0	0
	Shoulder	0	0	0	0	100	0	0	0	0	0	0	100	0	0
	Off-Peak	0	0	0	0	0	100	0	0	0	0	0	0	100	0
Jan 25/16	Peak	0	0	0	100	0	0	0	0	0	0	100	0	0	0
	Shoulder	0	0	0	0	100	0	0	0	0	0	0	100	0	0
	Off-Peak	0	0	0	0	0	100	0	0	0	0	0	0	100	0
Feb 01/16	Peak	0	0	0	100	0	0	0	0	0	0	100	0	0	0
	Shoulder	0	0	0	0	100	0	0	0	0	0	0	100	0	0
	Off-Peak	0	0	0	0	0	100	0	0	0	0	0	0	100	0
Feb 08/16	Peak	0	0	0	100	0	0	0	0	0	0	100	0	0	0
	Shoulder	0	0	0	0	100	0	0	0	0	0	0	100	0	0
	Off-Peak	0	0	0	0	0	100	0	0	0	0	0	0	100	0
Feb 15/16	Peak	0	0	0	100	0	0	0	0	0	0	100	0	0	0
	Shoulder	0	0	0	0	100	0	0	0	0	0	0	100	0	0
	Off-Peak	0	0	0	0	0	100	0	0	0	0	0	0	100	0
Feb 22/16	Peak	0	0	0	100	0	0	0	0	0	0	100	0	0	0
	Shoulder	0	0	0	0	100	0	0	0	0	0	0	100	0	0
	Off-Peak	0	0	0	0	0	100	0	0	0	0	0	0	100	0
Feb 29/16	Peak	0	0	0	100	0	0	0	0	0	0	100	0	0	0
	Shoulder	0	0	0	0	100	0	0	0	0	0	0	100	0	0
	Off-Peak	0	0	0	0	0	100	0	0	0	0	0	0	100	0

SEP Energy Supply Source (%) November 1, 2015 to October 31, 2016															
Week Of		Actual							Forecast						
		Imports			Exports			Avoided Spill	Imports			Exports			Avoided Spill
		Peak	Shoulder	Off-Peak	Peak	Shoulder	Off-Peak		Peak	Shoulder	Off-Peak	Peak	Shoulder	Off-Peak	
Mar 07/16	Peak	0	0	0	100	0	0	0	0	0	0	100	0	0	0
	Shoulder	0	0	0	0	100	0	0	0	0	0	0	100	0	0
	Off-Peak	0	0	0	0	0	100	0	0	0	0	0	0	100	0
Mar 14/16	Peak	0	0	0	100	0	0	0	0	0	0	100	0	0	0
	Shoulder	0	0	0	0	100	0	0	0	0	0	0	100	0	0
	Off-Peak	0	0	0	0	0	100	0	0	0	0	0	0	100	0
Mar 21/16	Peak	0	0	0	100	0	0	0	0	0	0	100	0	0	0
	Shoulder	0	0	0	0	100	0	0	0	0	0	0	100	0	0
	Off-Peak	0	0	0	0	0	100	0	0	0	0	0	0	100	0
Mar 28/16	Peak	0	0	0	100	0	0	0	0	0	0	100	0	0	0
	Shoulder	0	0	0	0	100	0	0	0	0	0	0	100	0	0
	Off-Peak	0	0	0	0	0	100	0	0	0	0	0	0	100	0
Apr 04/16	Peak	0	0	0	100	0	0	0	0	0	0	100	0	0	0
	Shoulder	0	0	0	0	100	0	0	0	0	0	0	100	0	0
	Off-Peak	0	0	0	0	0	100	0	0	0	0	0	0	100	0
Apr 11/16	Peak	0	0	0	100	0	0	0	0	0	0	100	0	0	0
	Shoulder	0	0	0	0	100	0	0	0	0	0	0	100	0	0
	Off-Peak	0	0	0	0	0	100	0	0	0	0	0	0	100	0
Apr 18/16	Peak	0	0	0	100	0	0	0	0	0	0	100	0	0	0
	Shoulder	0	0	0	0	100	0	0	0	0	0	0	100	0	0
	Off-Peak	0	0	0	0	0	100	0	0	0	0	0	0	100	0
Apr 25/16	Peak	0	0	0	40	0	0	60	0	0	0	100	0	0	0
	Shoulder	0	0	0	0	67	0	33	0	0	0	0	100	0	0
	Off-Peak	0	0	0	0	0	29	71	0	0	0	0	0	100	0
May 02/16	Peak	0	0	0	100	0	0	0	0	0	0	100	0	0	0
	Shoulder	0	0	0	0	78	0	22	0	0	0	0	100	0	0
	Off-Peak	0	0	0	0	0	29	71	0	0	0	0	0	100	0
May 09/16	Peak	0	0	0	80	0	0	20	0	0	0	100	0	0	0
	Shoulder	0	0	0	0	89	0	11	0	0	0	0	100	0	0
	Off-Peak	0	0	0	0	0	86	14	0	0	0	0	0	100	0

SEP Energy Supply Source (%) November 1, 2015 to October 31, 2016															
Week Of		Actual							Forecast						
		Imports			Exports			Avoided Spill	Imports			Exports			Avoided Spill
		Peak	Shoulder	Off-Peak	Peak	Shoulder	Off-Peak		Peak	Shoulder	Off-Peak	Peak	Shoulder	Off-Peak	
May 16/16	Peak	0	0	0	100	0	0	0	0	0	0	100	0	0	0
	Shoulder	0	0	0	0	100	0	0	0	0	0	0	100	0	0
	Off-Peak	0	0	0	0	0	100	0	0	0	0	0	0	100	0
May 23/16	Peak	0	0	0	100	0	0	0	0	0	0	100	0	0	0
	Shoulder	0	0	0	0	100	0	0	0	0	0	0	100	0	0
	Off-Peak	0	0	0	0	0	100	0	0	0	0	0	0	100	0
May 30/16	Peak	0	0	0	100	0	0	0	0	0	0	100	0	0	0
	Shoulder	0	0	0	0	100	0	0	0	0	0	0	100	0	0
	Off-Peak	0	0	0	0	0	100	0	0	0	0	0	0	100	0
Jun 06/16	Peak	0	0	0	100	0	0	0	0	0	0	100	0	0	0
	Shoulder	0	0	0	0	100	0	0	0	0	0	0	100	0	0
	Off-Peak	0	0	0	0	0	100	0	0	0	0	0	0	100	0
Jun 13/16	Peak	0	0	0	100	0	0	0	0	0	0	100	0	0	0
	Shoulder	0	0	0	0	100	0	0	0	0	0	0	100	0	0
	Off-Peak	0	0	0	0	0	100	0	0	0	0	0	0	100	0
Jun 20/16	Peak	0	0	0	100	0	0	0	0	0	0	100	0	0	0
	Shoulder	0	0	0	0	100	0	0	0	0	0	0	100	0	0
	Off-Peak	0	0	0	0	0	100	0	0	0	0	0	0	100	0
Jun 27/16	Peak	0	0	0	100	0	0	0	0	0	0	100	0	0	0
	Shoulder	0	0	0	0	100	0	0	0	0	0	0	100	0	0
	Off-Peak	0	0	0	0	0	100	0	0	0	0	0	0	100	0
Jul 04/16	Peak	0	0	0	100	0	0	0	0	0	0	100	0	0	0
	Shoulder	0	0	0	0	100	0	0	0	0	0	0	100	0	0
	Off-Peak	0	0	0	0	0	100	0	0	0	0	0	0	100	0
Jul 11/16	Peak	0	0	0	100	0	0	0	0	0	0	100	0	0	0
	Shoulder	0	0	0	0	100	0	0	0	0	0	0	100	0	0
	Off-Peak	0	0	0	0	0	100	0	0	0	0	0	0	100	0
Jul 18/16	Peak	0	0	0	100	0	0	0	0	0	0	100	0	0	0
	Shoulder	0	0	0	0	100	0	0	0	0	0	0	100	0	0
	Off-Peak	0	0	0	0	0	100	0	0	0	0	0	0	100	0

SEP Energy Supply Source (%) November 1, 2015 to October 31, 2016															
Week Of		Actual							Forecast						
		Imports			Exports			Avoided Spill	Imports			Exports			Avoided Spill
		Peak	Shoulder	Off-Peak	Peak	Shoulder	Off-Peak		Peak	Shoulder	Off-Peak	Peak	Shoulder	Off-Peak	
Jul 25/16	Peak	0	0	0	100	0	0	0	0	0	0	100	0	0	0
	Shoulder	0	0	0	0	78	0	22	0	0	0	0	100	0	0
	Off-Peak	0	0	0	0	0	86	14	0	0	0	0	0	100	0
Aug 01/16	Peak	0	0	0	25	0	0	75	0	0	0	100	0	0	0
	Shoulder	0	0	0	0	20	0	80	0	0	0	0	100	0	0
	Off-Peak	0	0	0	0	0	0	100	0	0	0	0	0	100	0
Aug 08/16	Peak	0	0	0	100	0	0	0	0	0	0	100	0	0	0
	Shoulder	0	0	0	0	56	0	44	0	0	0	0	0	0	100
	Off-Peak	0	0	0	0	0	43	57	0	0	0	0	0	0	100
Aug 15/16	Peak	0	0	0	100	0	0	0	0	0	0	60	0	0	40
	Shoulder	0	0	0	0	100	0	0	0	0	0	0	0	0	100
	Off-Peak	0	0	0	0	0	43	57	0	0	0	0	0	0	100
Aug 22/16	Peak	0	0	0	100	0	0	0	0	0	0	100	0	0	0
	Shoulder	0	0	0	0	78	0	22	0	0	0	0	44	0	56
	Off-Peak	0	0	0	0	0	43	57	0	0	0	0	0	0	100
Aug 29/16	Peak	0	0	0	100	0	0	0	0	0	0	100	0	0	0
	Shoulder	0	0	0	0	100	0	0	0	0	0	0	100	0	0
	Off-Peak	0	0	0	0	0	29	71	0	0	0	0	0	100	0
Sep 05/16	Peak	0	0	0	75	0	0	25	0	0	0	100	0	0	0
	Shoulder	0	0	0	0	70	0	30	0	0	0	0	100	0	0
	Off-Peak	0	0	0	0	0	29	71	0	0	0	0	0	100	0
Sep 12/16	Peak	0	0	0	80	0	0	20	0	0	0	100	0	0	0
	Shoulder	0	0	0	0	78	0	22	0	0	0	0	100	0	0
	Off-Peak	0	0	0	0	0	29	71	0	0	0	0	0	100	0
Sep 19/16	Peak	0	0	0	80	0	0	20	0	0	0	100	0	0	0
	Shoulder	0	0	0	0	78	0	22	0	0	0	0	100	0	0
	Off-Peak	0	0	0	0	0	43	57	0	0	0	0	0	100	0
Sep 26/16	Peak	0	0	0	80	0	0	20	0	0	0	100	0	0	0
	Shoulder	0	0	0	0	67	0	33	0	0	0	0	100	0	0
	Off-Peak	0	0	0	0	0	57	43	0	0	0	0	0	43	57

SEP Energy Supply Source (%) November 1, 2015 to October 31, 2016															
Week Of		Actual							Forecast						
		Imports			Exports			Avoided Spill	Imports			Exports			Avoided Spill
		Peak	Shoulder	Off-Peak	Peak	Shoulder	Off-Peak		Peak	Shoulder	Off-Peak	Peak	Shoulder	Off-Peak	
Oct 03/16	Peak	0	0	0	100	0	0	0	0	0	0	100	0	0	0
	Shoulder	0	0	0	0	67	0	33	0	0	0	0	100	0	0
	Off-Peak	0	0	0	0	0	29	71	0	0	0	0	0	0	100
Oct 10/16	Peak	0	0	0	100	0	0	0	0	0	0	100	0	0	0
	Shoulder	0	0	0	0	100	0	0	0	0	0	0	100	0	0
	Off-Peak	0	0	0	0	0	43	57	0	0	0	0	0	100	0
Oct 17/16	Peak	0	0	0	80	0	0	20	0	0	0	100	0	0	0
	Shoulder	0	0	0	0	67	0	33	0	0	0	0	100	0	0
	Off-Peak	0	0	0	0	0	86	14	0	0	0	0	0	100	0
Oct 24/16	Peak	0	0	0	100	0	0	0	0	0	0	100	0	0	0
	Shoulder	0	0	0	0	100	0	0	0	0	0	0	100	0	0
	Off-Peak	0	0	0	0	0	100	0	0	0	0	0	0	57	43
Oct 31/16	Peak	0	0	0	100	0	0	0	0	0	0	100	0	0	0
	Shoulder	0	0	0	0	0	0	100	0	0	0	0	100	0	0
	Off-Peak	0	0	0	0	0	100	0	0	0	0	0	0	0	100
Overall Average		0	0	0	31	30	27	11	0	0	0	32	32	30	5

Attachment 4 - Total Energy Sales in MWh

**SURPLUS ENERGY PROGRAM
TOTAL ENERGY SALES IN MWH**

Week Beginning	Peak	Shoulder	Off-Peak	Total
November 1, 2015	0 *	42	23	65
November 2, 2015	152	240	166	558
November 9, 2015	130	280	184	594
November 16, 2015	170	293	202	665
November 23, 2015	193	311	228	732
November 30, 2015	178	284	211	673
December 7, 2015	174	287	210	670
December 14, 2015	181	323	233	738
December 21, 2015	149	393	256	798
December 28, 2015	113	403	256	772
January 4, 2016	189	358	267	814
January 11, 2016	223	397	300	919
January 18, 2016	209	349	275	833
January 25, 2016	175	278	231	684
February 1, 2016	182	337	252	771
February 8, 2016	228	383	304	914
February 15, 2016	154	380	265	798
February 22, 2016	194	338	259	791
February 29, 2016	225	345	279	849
March 7, 2016	175	268	217	660
March 14, 2016	171	298	225	694
March 21, 2016	153	340	251	744
March 28, 2016	134	331	225	690
April 4, 2016	181	305	233	719
April 11, 2016	151	247	203	600
April 18, 2016	131	231	187	548
April 25, 2016	125	186	172	483
May 2, 2016	96	157	124	377
May 9, 2016	110	191	136	437
May 16, 2016	90	142	104	336

**SURPLUS ENERGY PROGRAM
TOTAL ENERGY SALES IN MWH**

Week Beginning	Peak	Shoulder	Off-Peak	Total
May 23, 2016	74	168	105	348
May 30, 2016	71	116	85	272
June 6, 2016	77	103	74	253
June 13, 2016	51	68	37	156
June 20, 2016	52	74	39	164
June 27, 2016	35	60	37	132
July 4, 2016	44	56	35	135
July 11, 2016	42	57	33	132
July 18, 2016	30	51	30	111
July 25, 2016	38	60	34	132
August 1, 2016	40	63	32	135
August 8, 2016	47	56	26	129
August 15, 2016	39	58	35	132
August 22, 2016	48	62	33	143
August 29, 2016	38	50	32	120
September 5, 2016	36	67	37	141
September 12, 2016	69	94	59	222
September 19, 2016	60	98	66	223
September 26, 2016	62	113	76	252
October 3, 2016	87	151	97	335
October 10, 2016	101	233	146	480
October 17, 2016	137	236	166	539
October 24, 2016	136	245	175	556
October 31, 2016	28	30	26	84
Total**	6,177	11,085	7,991	25,253

* November 1, 2015 was a Sunday and Off-Peak.

** Totals may not add up due to rounding.

Attachment 5 - Energy Charge Revenue

**SURPLUS ENERGY PROGRAM
ENERGY CHARGE REVENUE**

Week Beginning	Peak	Shoulder	Off-Peak	Total
November 1, 2015	\$0 *	\$1,210	\$389	\$1,599
November 2, 2015	\$5,220	\$6,969	\$3,252	\$15,441
November 9, 2015	\$4,643	\$8,252	\$3,646	\$16,541
November 16, 2015	\$5,247	\$7,615	\$2,730	\$15,591
November 23, 2015	\$6,240	\$8,203	\$4,563	\$19,006
November 30, 2015	\$5,292	\$6,760	\$3,491	\$15,543
December 7, 2015	\$5,136	\$7,074	\$3,017	\$15,227
December 14, 2015	\$5,589	\$8,333	\$4,229	\$18,150
December 21, 2015	\$4,296	\$9,498	\$3,988	\$17,782
December 28, 2015	\$3,464	\$10,717	\$4,851	\$19,033
January 4, 2016	\$6,920	\$11,190	\$6,536	\$24,646
January 11, 2016	\$7,773	\$11,910	\$6,212	\$25,895
January 18, 2016	\$8,269	\$11,083	\$7,897	\$27,249
January 25, 2016	\$7,310	\$10,122	\$5,635	\$23,067
February 1, 2016	\$6,726	\$10,531	\$6,041	\$23,298
February 8, 2016	\$7,720	\$11,395	\$8,924	\$28,039
February 15, 2016	\$4,746	\$9,841	\$4,762	\$19,349
February 22, 2016	\$6,642	\$9,101	\$6,157	\$21,901
February 29, 2016	\$6,585	\$8,929	\$6,007	\$21,521
March 7, 2016	\$4,857	\$6,206	\$4,228	\$15,291
March 14, 2016	\$4,515	\$6,527	\$3,787	\$14,829
March 21, 2016	\$3,473	\$6,963	\$2,413	\$12,849
March 28, 2016	\$3,367	\$6,915	\$3,893	\$14,175
April 4, 2016	\$4,484	\$6,416	\$3,502	\$14,402
April 11, 2016	\$3,703	\$5,043	\$3,151	\$11,898
April 18, 2016	\$3,123	\$5,035	\$3,259	\$11,418
April 25, 2016	\$3,380	\$4,190	\$2,245	\$9,815
May 2, 2016	\$2,736	\$3,687	\$1,591	\$8,014
May 9, 2016	\$2,594	\$3,990	\$1,750	\$8,335
May 16, 2016	\$2,198	\$3,090	\$1,159	\$6,447

**SURPLUS ENERGY PROGRAM
ENERGY CHARGE REVENUE**

Week Beginning	Peak	Shoulder	Off-Peak	Total
May 23, 2016	\$1,942	\$3,447	\$1,350	\$6,739
May 30, 2016	\$1,689	\$2,535	\$1,035	\$5,259
June 6, 2016	\$2,560	\$2,906	\$1,111	\$6,577
June 13, 2016	\$1,411	\$1,551	\$537	\$3,499
June 20, 2016	\$2,074	\$2,355	\$830	\$5,259
June 27, 2016	\$1,424	\$1,895	\$733	\$4,052
July 4, 2016	\$1,727	\$1,664	\$706	\$4,097
July 11, 2016	\$1,946	\$1,920	\$702	\$4,568
July 18, 2016	\$1,371	\$1,727	\$665	\$3,763
July 25, 2016	\$1,472	\$1,756	\$572	\$3,800
August 1, 2016	\$2,061	\$2,222	\$666	\$4,950
August 8, 2016	\$1,859	\$1,364	\$320	\$3,543
August 15, 2016	\$1,550	\$1,158	\$432	\$3,140
August 22, 2016	\$2,090	\$1,804	\$444	\$4,338
August 29, 2016	\$1,353	\$1,328	\$475	\$3,157
September 5, 2016	\$1,204	\$1,796	\$571	\$3,572
September 12, 2016	\$2,280	\$2,501	\$867	\$5,649
September 19, 2016	\$1,929	\$2,459	\$856	\$5,244
September 26, 2016	\$2,002	\$2,881	\$1,193	\$6,076
October 3, 2016	\$2,728	\$3,653	\$1,334	\$7,715
October 10, 2016	\$3,052	\$6,473	\$2,869	\$12,394
October 17, 2016	\$3,975	\$6,041	\$2,367	\$12,383
October 24, 2016	\$4,186	\$6,405	\$2,701	\$13,292
October 31, 2016	\$847	\$832	\$337	\$2,015
Total**	\$194,985	\$289,466	\$146,982	\$631,433

* November 1, 2015 was a Sunday and Off-Peak.

** Totals may not add up due to rounding.

Attachment 6 - Distribution Charge Revenue

**SURPLUS ENERGY PROGRAM
DISTRIBUTION CHARGE REVENUE**

Week Beginning	Peak	Shoulder	Off-Peak	Total
November 1, 2015	\$0 *	\$253	\$141	\$394
November 2, 2015	\$865	\$1,406	\$998	\$3,269
November 9, 2015	\$757	\$1,658	\$1,116	\$3,531
November 16, 2015	\$982	\$1,729	\$1,218	\$3,929
November 23, 2015	\$1,141	\$1,857	\$1,375	\$4,372
November 30, 2015	\$1,038	\$1,686	\$1,272	\$3,996
December 7, 2015	\$1,020	\$1,719	\$1,272	\$4,010
December 14, 2015	\$1,084	\$1,956	\$1,411	\$4,452
December 21, 2015	\$910	\$2,407	\$1,552	\$4,869
December 28, 2015	\$693	\$2,469	\$1,555	\$4,716
January 4, 2016	\$1,155	\$2,190	\$1,621	\$4,966
January 11, 2016	\$1,365	\$2,426	\$1,822	\$5,613
January 18, 2016	\$1,279	\$2,137	\$1,671	\$5,087
January 25, 2016	\$1,072	\$1,705	\$1,403	\$4,180
February 1, 2016	\$1,115	\$2,064	\$1,530	\$4,709
February 8, 2016	\$1,394	\$2,347	\$1,847	\$5,588
February 15, 2016	\$942	\$2,327	\$1,614	\$4,883
February 22, 2016	\$1,155	\$2,040	\$1,571	\$4,766
February 29, 2016	\$1,335	\$2,068	\$1,695	\$5,098
March 7, 2016	\$1,023	\$1,599	\$1,323	\$3,945
March 14, 2016	\$996	\$1,773	\$1,364	\$4,133
March 21, 2016	\$897	\$2,043	\$1,522	\$4,462
March 28, 2016	\$776	\$1,966	\$1,363	\$4,105
April 4, 2016	\$1,060	\$1,813	\$1,408	\$4,282
April 11, 2016	\$881	\$1,460	\$1,225	\$3,565
April 18, 2016	\$753	\$1,358	\$1,119	\$3,231
April 25, 2016	\$732	\$1,099	\$1,035	\$2,867
May 2, 2016	\$519	\$906	\$741	\$2,166
May 9, 2016	\$603	\$1,092	\$810	\$2,505
May 16, 2016	\$470	\$785	\$612	\$1,867

**SURPLUS ENERGY PROGRAM
DISTRIBUTION CHARGE REVENUE**

Week Beginning	Peak	Shoulder	Off-Peak	Total
May 23, 2016	\$395	\$954	\$626	\$1,975
May 30, 2016	\$376	\$653	\$503	\$1,531
June 6, 2016	\$381	\$552	\$432	\$1,366
June 13, 2016	\$222	\$322	\$200	\$745
June 20, 2016	\$225	\$352	\$210	\$787
June 27, 2016	\$159	\$304	\$201	\$664
July 4, 2016	\$192	\$269	\$188	\$649
July 11, 2016	\$183	\$273	\$172	\$629
July 18, 2016	\$144	\$255	\$162	\$561
July 25, 2016	\$172	\$290	\$185	\$646
August 1, 2016	\$169	\$297	\$172	\$638
August 8, 2016	\$177	\$242	\$132	\$551
August 15, 2016	\$171	\$281	\$189	\$641
August 22, 2016	\$209	\$292	\$179	\$681
August 29, 2016	\$178	\$246	\$182	\$606
September 5, 2016	\$160	\$343	\$216	\$719
September 12, 2016	\$327	\$497	\$345	\$1,169
September 19, 2016	\$303	\$541	\$390	\$1,234
September 26, 2016	\$323	\$619	\$450	\$1,393
October 3, 2016	\$470	\$851	\$577	\$1,898
October 10, 2016	\$569	\$1,366	\$877	\$2,812
October 17, 2016	\$772	\$1,375	\$999	\$3,146
October 24, 2016	\$775	\$1,435	\$1,056	\$3,265
October 31, 2016	\$162	\$171	\$155	\$488
Total**	\$35,225	\$65,114	\$48,008	\$148,346

* November 1, 2015 was a Sunday and Off-Peak.

** Totals may not add up due to rounding.

Attachment 7 - SEP Energy Revenues vs. Value of Energy

**SURPLUS ENERGY PROGRAM
SEP ENERGY REVENUES VS COSTS**

Week Beginning	SEP Energy Sales (MWH)	SEP Sales (Energy Only)	Value of SEP Energy to MH	Total
November 1, 2015	65	\$1,599	\$973	\$626
November 2, 2015	558	\$15,441	\$11,222	\$4,219
November 9, 2015	594	\$16,541	\$10,598	\$5,944
November 16, 2015	665	\$15,591	\$13,618	\$1,973
November 23, 2015	732	\$19,006	\$17,027	\$1,979
November 30, 2015	673	\$15,543	\$18,303	(\$2,759)
December 7, 2015	670	\$15,227	\$14,522	\$704
December 14, 2015	738	\$18,150	\$17,945	\$205
December 21, 2015	798	\$17,782	\$19,100	(\$1,317)
December 28, 2015	772	\$19,033	\$21,113	(\$2,080)
January 4, 2016	814	\$24,646	\$23,333	\$1,313
January 11, 2016	919	\$25,895	\$29,345	(\$3,450)
January 18, 2016	833	\$27,249	\$29,873	(\$2,623)
January 25, 2016	684	\$23,067	\$17,054	\$6,013
February 1, 2016	771	\$23,298	\$19,469	\$3,830
February 8, 2016	914	\$28,039	\$26,692	\$1,347
February 15, 2016	798	\$19,349	\$19,899	(\$550)
February 22, 2016	791	\$21,901	\$18,490	\$3,412
February 29, 2016	849	\$21,521	\$18,863	\$2,658
March 7, 2016	660	\$15,291	\$11,943	\$3,348
March 14, 2016	694	\$14,829	\$13,410	\$1,419
March 21, 2016	744	\$12,849	\$13,988	(\$1,140)
March 28, 2016	690	\$14,175	\$13,173	\$1,001
April 4, 2016	719	\$14,402	\$14,529	(\$127)
April 11, 2016	600	\$11,898	\$11,321	\$577
April 18, 2016	548	\$11,418	\$11,223	\$195
April 25, 2016	483	\$9,815	\$7,138	\$2,677
May 2, 2016	377	\$8,014	\$6,909	\$1,104
May 9, 2016	437	\$8,335	\$6,747	\$1,588

**SURPLUS ENERGY PROGRAM
SEP ENERGY REVENUES VS COSTS**

Week Beginning	SEP Energy Sales (MWH)	SEP Sales (Energy Only)	Value of SEP Energy to MH	Total
May 16, 2016	336	\$6,447	\$5,961	\$486
May 23, 2016	348	\$6,739	\$8,507	(\$1,768)
May 30, 2016	272	\$5,259	\$5,383	(\$124)
June 6, 2016	253	\$6,577	\$6,201	\$376
June 13, 2016	156	\$3,499	\$4,337	(\$838)
June 20, 2016	164	\$5,259	\$4,457	\$802
June 27, 2016	132	\$4,052	\$3,844	\$209
July 4, 2016	135	\$4,097	\$4,178	(\$81)
July 11, 2016	132	\$4,568	\$3,824	\$744
July 18, 2016	111	\$3,763	\$4,192	(\$429)
July 25, 2016	132	\$3,800	\$4,377	(\$577)
August 1, 2016	135	\$4,950	\$2,498	\$2,452
August 8, 2016	129	\$3,543	\$4,632	(\$1,089)
August 15, 2016	132	\$3,140	\$4,325	(\$1,185)
August 22, 2016	143	\$4,338	\$3,967	\$371
August 29, 2016	120	\$3,157	\$3,411	(\$254)
September 5, 2016	141	\$3,572	\$3,506	\$66
September 12, 2016	222	\$5,649	\$5,184	\$465
September 19, 2016	223	\$5,244	\$5,766	(\$522)
September 26, 2016	252	\$6,076	\$6,068	\$8
October 3, 2016	335	\$7,715	\$7,523	\$192
October 10, 2016	480	\$12,394	\$11,133	\$1,261
October 17, 2016	539	\$12,383	\$16,280	(\$3,897)
October 24, 2016	556	\$13,292	\$15,412	(\$2,120)
October 31, 2016	84	\$2,015	\$2,330	(\$315)
Total**	25,253	\$631,433	\$605,116	\$26,316

* Sales figures are based on the revenue received from the Energy Charge only. They do not include revenues from Distribution and Basic Charge.

** Totals may not add up due to rounding.

REPORT TO THE PUBLIC UTILITIES BOARD

SURPLUS ENERGY PROGRAM

NOVEMBER 1, 2014 – OCTOBER 31, 2015

JANUARY 2016



TABLE OF CONTENTS

	<u>Page Number</u>
BACKGROUND	1
SUMMARY OF FINDINGS	1
DESCRIPTION OF PROGRAM.....	3
Eligibility:	3
Billing:	3
PROGRAM SUBSCRIPTION	4
POTENTIAL CUSTOMERS.....	5
CUSTOMER EXPERIENCE	5
SEP ENERGY PRICES	5
SOURCE OF SUPPLY FOR SEP ENERGY	7
ACTUAL SALES	8
YEAR-TO-DATE RESULTS	10
Attachment 1 - SEP: Chronology of PUB Directives, MH Applications, and Reports...	12
Attachment 2 - PUB Approved Weekly SEP Rates.....	14
Attachment 3 - SEP Energy Supply Source.....	16
Attachment 4 - Total Energy Sales in MWh.....	21
Attachment 5 - Energy Charge Revenue	23
Attachment 6 - Distribution Charge Revenue.....	25
Attachment 7 - SEP Energy Revenues vs. Value of Energy.....	27

**REPORT TO PUBLIC UTILITIES BOARD
SURPLUS ENERGY PROGRAM
NOVEMBER 1, 2014 - OCTOBER 31, 2015**

BACKGROUND

The Surplus Energy Program (“SEP”) is a rate program that enables a qualifying customer to purchase surplus energy at market prices that are determined on a weekly basis for peak, shoulder, and off-peak periods. Customers began accepting service under the Terms and Conditions of this temporary program on December 4, 2000.

Manitoba Hydro filed an Application on April 5, 2012 seeking to make SEP a permanent rate program and requesting minor modifications to SEP Option 1. These proposals were subsequently included in Manitoba Hydro’s 2012/13 & 2013/14 General Rate Application (“GRA”) and the PUB approved SEP Option 1 on an interim basis and approved Options 2 and 3 as permanent rate programs in Order 43/13.. Manitoba Hydro sought final approval to the modifications to SEP Option 1 and to make it a permanent rate offering in the 2014/15 & 2015/16 GRA. In Board Order 73/15 the PUB deferred giving its final approval as it was the PUB’s expectation that the matter would be reviewed in conjunction with the upcoming Cost of Service proceeding.

A chronology of PUB Orders and Manitoba Hydro’s applications and reports with respect to the SEP Program are found at Attachment 1.

Manitoba Hydro files annual reports on the status of the program. This report covers the period November 1, 2014 to October 31, 2015. For a brief history of PUB Orders and Manitoba Hydro’s applications and reports with respect to the SEP Program, please see Attachment 1.

SUMMARY OF FINDINGS

The SEP Program is intended to be a revenue neutral program that offers customers choice and access to surplus energy at prices that reflect Manitoba Hydro’s short term marginal cost of energy. To obtain the full benefits of the program customers need to have sufficient flexibility in their operation to take advantage of lower price periods. The SEP Program is not intended as a rate discount program; however, the energy market and Manitoba Hydro supply conditions

during the past year were such that all SEP customers experienced a lower annual bill when compared to service under the respective General Service firm rate.

Manitoba Hydro has determined that the value of surplus energy provided to SEP customers during the current one-year reporting period was \$730,898. Total revenue collected under SEP was \$770,866, excluding Basic Charges and Distribution Charges, resulting in net energy revenue to Manitoba Hydro of \$39,968.

The majority of SEP energy supply for all three pricing periods was sourced from displaced exports. For the Peak period 96% was sourced through exports and the remaining 4% was sourced through avoided spill. For the Shoulder period, 94% was sourced through exports, 5% through avoided spill and 1% through imports. For the Off-Peak period, 87% of energy was sourced through exports, 11% through avoided spill, and 2% was sourced through imports.

The main factors that affected SEP prices during the current reporting year were extra-provincial market prices, weather driven electrical load-water conditions, and transmission constraints to neighboring markets. Water conditions during this reporting period were average. Inflows were slightly below average through spring and early summer across all basins, and above average through late summer and fall. Lake Winnipeg and Nelson River basins experienced significant precipitation events starting in July that contributed to above average flows continuing into October. Spill conditions occurred in October due to high inflows, full reservoirs and outages at Manitoba Hydro's interconnection to the United States. Energy that is sourced from avoided spill is defined as the water that would have been spilled absent of the SEP during times when tie-lines to neighboring markets are fully utilized and there is excess hydro generation capacity.

Average 2014/15 SEP Peak and Shoulder prices were the 4th lowest of the 15 years the program has been available and are comparable to prices in the 2011 to 2013 period. Average 2014/15 Off-Peak prices were the 7th lowest with higher average prices seen from 2000 to 2008. SEP General Service Medium average prices were: On-Peak 3.782 ¢/kWh ranging from 0.951 ¢/kWh to 5.432 ¢/kWh; Shoulder 3.082 ¢/kWh ranging from 1.324 ¢/kWh to 4.039 ¢/kWh; and Off-Peak 1.979 ¢/kWh ranging from 0.455 ¢/kWh to 2.822 ¢/kWh.

There was no interruption in service during the 12 month reporting period.

DESCRIPTION OF PROGRAM

Eligibility:

The Program makes surplus energy available on an interruptible basis to Manitoba Hydro General Service customers. Eligible customers may participate in one of the following three options:

- 1) Industrial Load - Option 1 – This option is available to industrial loads whose Total Demand is 1,000 kVA or greater. Total Demand is defined as the Reference Level of Demand plus the level of demand associated with SEP. Under this option customers may only designate 25%¹ of their total load as SEP load, with the remaining 75% being their Reference Demand.²
- 2) Heating Load - Option 2 – This option is available to electrical loads of 200 kW or greater. The electricity is to be used for space and/or water heating only and must be separately metered from the customer's firm load. Customers must have an alternate back-up energy source capable of heating the entire load in the event of an interruption.
- 3) Self-Generation Displacement - Option 3 – This option is available to industrial intermittent loads with total demand between 200 kW to 50,000 kW. Load would not be considered intermittent if the average monthly load factor exceeds 25%. The load must be separately metered from the customer's firm load and must be fully backed up by generating equipment which is leased or owned by the customer and is located on the premises of the SEP load.

Billing:

All SEP customers are billed a monthly Basic Charge, Distribution Charge and an Energy Charge. The Basic Charge is \$50.00 per month for customers with connected loads of 1,000 kVA or less, and \$100.00 per month for connected loads greater than 1,000 kVA. The Distribution Charge per kilowatt-hour ranges from 0.06¢ to 0.62¢ dependent on customer class. The Energy Charge per kilowatt-hour, applicable to three pricing periods, varies based on expected market

¹ Customers can designate up to 50% of their load as SEP provided they have an alternate back-up source of energy to supply the amount in excess of the 25%.

² Manitoba Hydro filed an Application on April 5, 2012 requesting minor modifications to SEP Option 1. Order 43/13 dated April 26, 2013 approved SEP Option 1 on an interim basis. Manitoba Hydro sought final approval to the modifications to SEP Option 1 and to make it a permanent rate offering in its 2014/15 and 2015/16 GRA filed on January 15, 2015. In Order 73/15 dated July 24, 2015, the PUB deferred giving final approval as it was the PUB's expectation that the matter would be reviewed in conjunction with the upcoming Cost of Service proceeding.

prices from week-to-week. The three pricing periods are peak, shoulder and off-peak, and are further defined by season as shown in the following table:

	Summer (May 1 – October 31)	Winter (November 1 – April 30)
Peak	12:01 to 20:00 hours Monday to Friday Except Statutory Holidays	07:01 to 11:00 hours and 16:01 to 20:00 hours Monday to Friday Except Statutory Holidays
Shoulder	All hours except Peak, every day from 07:01 to 23:00	
Off-Peak	All night time hours from 23:01 to 07:00 hours	

PROGRAM SUBSCRIPTION

There were 30 customers on the SEP program for this reporting period. This is an increase of two customers over last year, one Option 2 customer in the manufacturing industry and one Option 3 in the quarry and sand pit industry. Of the 30 customers, 26 are Option 2 (Heating Load) and 4 are Option 3 (Self-Generation Displacement). There are no Option 1 (Industrial Load) customers.

The Option 2 customers are classed as General Service Medium Demand and fall under the following industry types:

Agricultural and Related Service Industries	7 customers
Educational Service Industries	12 customers
Local Government Service Industries	4 customers
Manufacturing	2 customers
Retail Food, Beverage and Drug Industries	1 customer

The Option 3 customers are in the General Service Large Demand 750 V – 30 kV class under the following industry types:

Quarry & Sand Pit Industries	3 customers
Paper & Allied Products Industries	1 customer

All customers have signed a waiver warranting that they have appropriate back-up facilities on site to support their loads in the event of an interruption.

POTENTIAL CUSTOMERS

Several customers in the agricultural industry who currently use coal are assessing alternate fuel choices. They may consider SEP in the future due to the Manitoba government's proposed ban on the use of coal for space and water heating in 2017.

CUSTOMER EXPERIENCE

Manitoba Hydro is not aware of any customer complaints regarding the SEP Program.

There have been no difficulties encountered with communication of pricing information to customers on a timely basis. Customers are faxed or emailed on Wednesday of each week, providing prices that will be in place for the following week beginning Sunday at midnight.

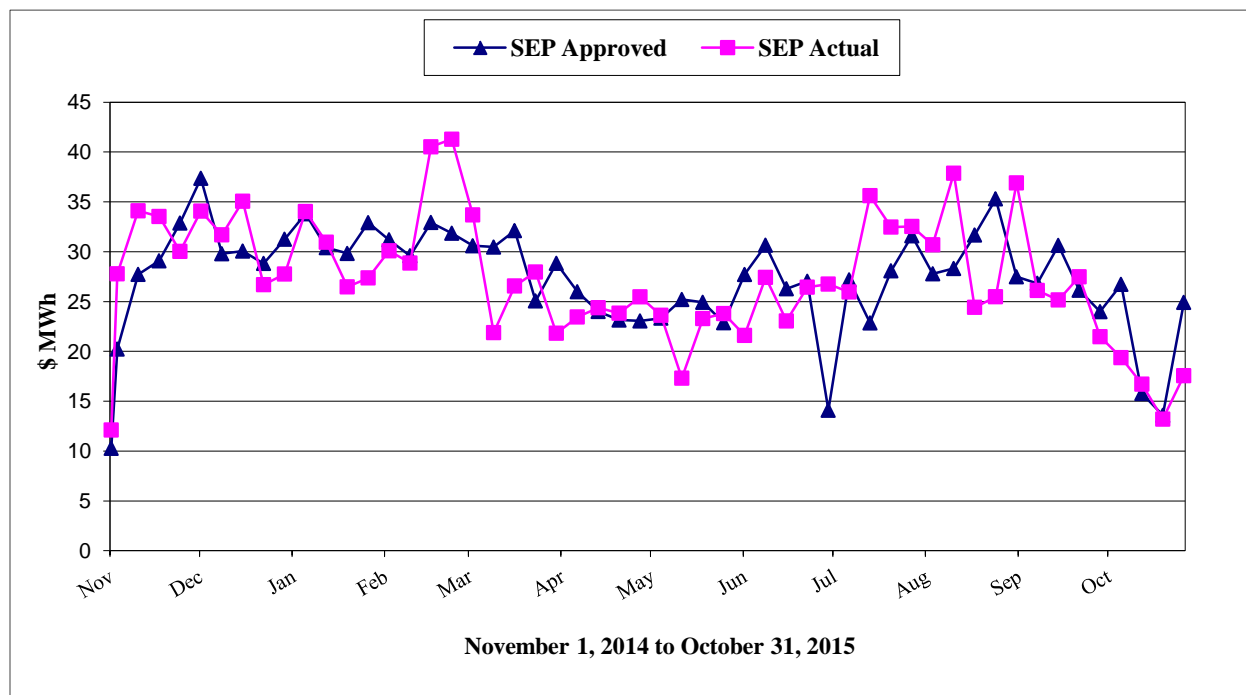
SEP ENERGY PRICES

Each Wednesday Manitoba Hydro applies to the Public Utilities Board for interim *ex parte* approval of the SEP Energy Rates to be in effect the following Monday through Sunday. The following table compares the weekly average prices approved by the PUB with the actual average after-the-fact prices throughout the reporting period. Attachment 2 provides the weekly rates for each pricing period for both Medium and Large 750 V - 30 kV classes. The information is also shown graphically on page 7.

SEP - Average Weekly Rate Per MWh				
Week Beginning	SEP Approved	SEP Actual	Difference	PUB Order No.
November 1, 2014	\$10.27	\$12.11	(\$1.84)	117/14
November 3, 2014	\$20.23	\$27.78	(\$7.55)	122/14
November 10, 2014	\$27.72	\$34.10	(\$6.38)	124/14
November 17, 2014	\$29.08	\$33.53	(\$4.45)	125/14
November 24, 2014	\$32.87	\$30.03	\$2.84	129/14
December 1, 2014	\$37.36	\$34.07	\$3.29	130/14
December 8, 2014	\$29.79	\$31.69	(\$1.90)	134/14
December 15, 2014	\$30.06	\$35.06	(\$5.00)	141/14
December 22, 2014	\$28.82	\$26.69	\$2.13	142/14
December 29, 2014	\$31.25	\$27.76	\$3.49	144/14
January 5, 2015	\$33.80	\$34.03	(\$0.23)	147/14
January 12, 2015	\$30.40	\$30.95	(\$0.55)	1/15
January 19, 2015	\$29.82	\$26.47	\$3.35	5/15

SEP - Average Weekly Rate Per MWh				
Week Beginning	SEP Approved	SEP Actual	Difference	PUB Order No.
January 26, 2015	\$32.91	\$27.37	\$5.54	6/15
February 2, 2015	\$31.19	\$30.09	\$1.10	11/15
February 9, 2015	\$29.59	\$28.86	\$0.73	15/15
February 16, 2015	\$32.93	\$40.52	(\$7.59)	19/15
February 23, 2015	\$31.85	\$41.28	(\$9.43)	20/15
March 2, 2015	\$30.59	\$33.69	(\$3.10)	26/15
March 9, 2015	\$30.46	\$21.88	\$8.58	30/15
March 16, 2015	\$32.11	\$26.56	\$5.55	31/15
March 23, 2015	\$25.06	\$27.96	(\$2.90)	34/15
March 30, 2015	\$28.83	\$21.82	\$7.01	36/15
April 6, 2015	\$25.98	\$23.45	\$2.53	37/15
April 13, 2015	\$24.00	\$24.38	(\$0.38)	38/15
April 20, 2015	\$23.14	\$23.83	(\$0.69)	40/15
April 27, 2015	\$23.05	\$25.47	(\$2.42)	41/15
May 4, 2015	\$23.33	\$23.62	(\$0.29)	46/15
May 11, 2015	\$25.20	\$17.31	\$7.89	51/15
May 18, 2015	\$24.92	\$23.29	\$1.63	53/15
May 25, 2015	\$22.87	\$23.79	(\$0.92)	54/15
June 1, 2015	\$27.71	\$21.60	\$6.11	56/15
June 8, 2015	\$30.65	\$27.42	\$3.23	57/15
June 15, 2015	\$26.28	\$23.05	\$3.23	59/15
June 22, 2015	\$27.03	\$26.44	\$0.59	61/15
June 29, 2015	\$14.09	\$26.75	(\$12.66)	62/15
July 6, 2015	\$27.17	\$25.96	\$1.21	63/15
July 13, 2015	\$22.85	\$35.62	(\$12.77)	66/15
July 20, 2015	\$28.08	\$32.47	(\$4.39)	68/15
July 27, 2015	\$31.59	\$32.53	(\$0.94)	71/15
August 3, 2015	\$27.78	\$30.69	(\$2.91)	76/15
August 10, 2015	\$28.31	\$37.87	(\$9.56)	79/15
August 17, 2015	\$31.67	\$24.42	\$7.25	82/15
August 24, 2015	\$35.30	\$25.48	\$9.82	85/15
August 31, 2015	\$27.48	\$36.90	(\$9.42)	86/15
September 7, 2015	\$26.83	\$26.11	\$0.72	87/15
September 14, 2015	\$30.63	\$25.16	\$5.47	88/15
September 21, 2015	\$26.13	\$27.48	(\$1.35)	89/15
September 28, 2015	\$23.98	\$21.47	\$2.51	91/15
October 5, 2015	\$26.72	\$19.37	\$7.35	93/15

SEP - Average Weekly Rate Per MWh				
Week Beginning	SEP Approved	SEP Actual	Difference	PUB Order No.
October 12, 2015	\$15.77	\$16.71	(\$0.94)	99/15
October 19, 2015	\$13.58	\$13.20	\$0.38	100/15
October 26, 2015	\$24.91	\$17.56	\$7.35	104/15
Average	\$27.25	\$27.24	\$0.01	



SOURCE OF SUPPLY FOR SEP ENERGY

As part of its weekly Application to the PUB, Manitoba Hydro is required to indicate the expected source of supply for SEP energy that is used to derive the marginal cost of energy for the weekly SEP energy rates. The following summary table compares the expected source of supply, which was the basis of the weekly Applications, to the actual source of supply as determined after-the-fact. A more detailed analysis by week is provided in Attachment 3.

SEP Energy Supply Source (%)														
November 1, 2014 to October 31, 2015														
	Actual							Forecast						
	Imports			Exports			Avoided Spill	Imports			Exports			Avoided Spill
	Peak	Shoulder	Off-Peak	Peak	Shoulder	Off-Peak		Peak	Shoulder	Off-Peak	Peak	Shoulder	Off-Peak	
Peak	0%	0%	0%	96%	0%	0%	4%	0%	0%	0%	98%	0%	0%	2%
Shoulder	0%	0%	1%	0%	94%	0%	5%	0%	0%	0%	0%	96%	0%	4%
Off-Peak	0%	0%	2%	0%	0%	87%	11%	0%	0%	1%	0%	0%	89%	10%

Through-out the reporting period SEP energy was sourced mostly from displaced exports: 96% Peak, 94% Shoulder, and 87% Off-Peak. In November and December, 1% of the Shoulder energy and 2% of the Off-Peak energy was sourced from imports. The remainder of the energy supply was sourced from avoided spill: 4% Peak, 5% Shoulder, and 11% Off-Peak. Avoided spill occurs during periods when tie-lines to neighboring markets are fully utilized and firm load has been met, combined with unused hydro generation capacity. In general, avoided spill is more frequently experienced during Off-Peak periods due to low over-night Manitoba loads.

Water conditions during this reporting period were average. Inflows were slightly below average through spring and early summer across all basins, and above average through late summer and fall. Lake Winnipeg and Nelson River basins experienced significant precipitation events starting in July that contributed to above average flows continuing into October. Spill conditions occurred in October due to high inflows, full reservoirs and outages at Manitoba Hydro's interconnection to the United States.

ACTUAL SALES

Total energy and revenue of SEP sales over the period November 1, 2014 to October 31, 2015 were 25,564 MWh, \$770,866 Energy Charge, \$152,015 Distribution Charge, and \$19,203 in Basic Charges for a total of \$942,084. The distribution of the energy and revenue by pricing period is shown in the following table. A more detailed analysis by week is provided in Attachments 4, 5 and 6.

Period	SEP Energy Sales MWh	Revenue		
		Distribution Charge	Energy Charge	Total
Peak	6,052	\$35,199	\$235,884	\$271,083
Shoulder	11,208	\$66,578	\$356,001	\$422,580
Off Peak	8,304	\$50,238	\$178,981	\$229,218
Total	25,564	\$152,015	\$770,866	\$922,881

Over the period November 1, 2014 through to October 31, 2015, the value of SEP energy (using after-the-fact prices) was \$730,898. Revenue from energy sales was \$770,866 resulting in net revenue to Manitoba Hydro of \$39,968 for the year. The following table summarizes Manitoba Hydro net revenue for each time-of-use period. A more detailed analysis by week is found in Attachment 7.

SEP Energy Revenues versus Value of Energy				
Period	SEP Energy Sales MWh	SEP Sales (Energy Only)	Value of SEP Energy to Manitoba Hydro	Manitoba Hydro Net Energy Revenue
Peak	6,052	\$235,884	\$222,367	\$13,517
Shoulder	11,208	\$356,001	\$322,289	\$33,712
Off Peak	8,304	\$178,981	\$186,243	(\$7,262)
Total	25,564	\$770,866	\$730,898	\$39,968

YEAR-TO-DATE RESULTS

The following is a summary of the program since its inception on December 4, 2000.

Program Year	Number of Services		
	General Service Medium	GS Large (750 V to 30 kV)	Total
Dec 4, 2000 to Oct 31, 2001	24	4	28
Nov 1, 2001 to Oct 31, 2002	27	6	33
Nov 1, 2002 to Oct 31, 2003	27	6	33
Nov 1, 2003 to Oct 31, 2004	25	6	31
Nov 1, 2004 to Oct 31, 2005	22	6	28
Nov 1, 2005 to Oct 31, 2006	22	6	28
Nov 1, 2006 to Oct 31, 2007	22	5	27
Nov 1, 2007 to Oct 31, 2008	20	5	25
Nov 1, 2008 to Oct 31, 2009	19	5	24
Nov 1, 2009 to Oct 31, 2010	19	5	24
Nov 1, 2010 to Oct 31, 2011	21	5	26
Nov 1, 2011 to Oct 31, 2012	24	5	29
Nov 1, 2012 to Oct 31, 2013	25	3	28
Nov 1, 2013 to Oct 31, 2014	25	3	28
Nov 1, 2014 to Oct 31, 2015	26	4	30

Program Year	SEP Actual Sales			
	Basic Charge	Distribution Charge	Energy Charge	Total Revenue
Dec 4, 2000 to Oct 31, 2001	\$15,436	\$105,948	\$880,033	\$1,001,418
Nov 1, 2001 to Oct 31, 2002	\$20,169	\$164,565	\$959,529	\$1,144,263
Nov 1, 2002 to Oct 31, 2003	\$21,330	\$111,347	\$1,061,522	\$1,194,200
Nov 1, 2003 to Oct 31, 2004	\$21,700	\$112,572	\$1,201,434	\$1,335,707
Nov 1, 2004 to Oct 31, 2005	\$20,180	\$147,530	\$1,277,816	\$1,445,526
Nov 1, 2005 to Oct 31, 2006	\$19,200	\$134,445	\$1,248,314	\$1,401,959
Nov 1, 2006 to Oct 31, 2007	\$19,178	\$128,724	\$1,414,933	\$1,562,835
Nov 1, 2007 to Oct 31, 2008	\$17,150	\$131,068	\$1,149,472	\$1,297,689
Nov 1, 2008 to Oct 31, 2009	\$16,790	\$139,021	\$932,076	\$1,087,887
Nov 1, 2009 to Oct 31, 2010	\$16,800	\$115,817	\$594,374	\$726,991
Nov 1, 2010 to Oct 31, 2011	\$17,650	\$152,400	\$672,493	\$842,543
Nov 1, 2011 to Oct 31, 2012	\$18,927	\$154,379	\$614,629	\$787,935
Nov 1, 2012 to Oct 31, 2013	\$19,450	\$172,097	\$793,148	\$984,695
Nov 1, 2013 to Oct 31, 2014	\$19,200	\$175,180	\$1,055,103	\$1,249,482
Nov 1, 2014 to Oct 31, 2015	\$19,203	\$152,015	\$770,866	\$942,084
Total	\$282,363	\$2,097,109	\$14,625,741	\$17,005,213

Program Year	SEP Energy Sales vs. Value of Energy			
	SEP Sales		Marginal Cost to MH	Net Revenue to MH
	MWh	Energy Charge		
Dec 4, 2000 to Oct 31, 2001	18,123	\$880,033	\$891,308	(\$11,275)
Nov 1, 2001 to Oct 31, 2002	28,808	\$959,529	\$994,233	(\$34,704)
Nov 1, 2002 to Oct 31, 2003	19,473	\$1,061,522	\$1,056,307	\$5,215
Nov 1, 2003 to Oct 31, 2004	19,328	\$1,201,434	\$992,650	\$208,784
Nov 1, 2004 to Oct 31, 2005	25,013	\$1,277,816	\$1,241,792	\$36,024
Nov 1, 2005 to Oct 31, 2006	22,927	\$1,248,314	\$1,161,379	\$86,935
Nov 1, 2006 to Oct 31, 2007	22,152	\$1,414,933	\$1,392,736	\$22,197
Nov 1, 2007 to Oct 31, 2008	22,347	\$1,149,472	\$1,138,131	\$11,340
Nov 1, 2008 to Oct 31, 2009	23,393	\$932,076	\$842,510	\$89,565
Nov 1, 2009 to Oct 31, 2010	19,506	\$594,374	\$577,384	\$16,989
Nov 1, 2010 to Oct 31, 2011	25,568	\$672,493	\$602,184	\$70,309
Nov 1, 2011 to Oct 31, 2012	25,763	\$614,629	\$560,145	\$54,484
Nov 1, 2012 to Oct 31, 2013	28,757	\$793,148	\$772,778	\$20,369
Nov 1, 2013 to Oct 31, 2014	29,371	\$1,055,103	\$1,068,652	(\$13,549)
Nov 1, 2014 to Oct 31, 2015	25,564	\$770,866	\$730,898	\$39,968
Total	356,093	\$14,625,741	\$14,023,088	\$602,653

Attachment 1 - SEP: Chronology of PUB Directives, MH Applications, and Reports

PUB Order	Date	PUB Board Findings & MH Applications and Reports Filings
	Oct 25/99	MH files application for approval of the Surplus Energy Program
90/00	Jun 30/00	PUB approves SEP application to March 31, 2004 and directs MH to file annual reports on SEP by no later than January 31 of each year.
	Jul 20/00	MH letter - in response to Board Order 90/00 MH requests variance of 12 month notice provision to range from 12 to 16 months notice.
132/00	Sep 29/00	The PUB varies BO 90/00 such that an SEP customer who chooses to convert to firm service has various notice period options.
	Oct 26/00	MH files revised Terms & Condition of SEP to be in accordance with Board Order 90/00 and 132/00. MH also advises its intent to waive requirement for a Professional Engineer Certification of back-up facilities
143/01	Sep 13/01	The PUB approves the revised Terms and Conditions as noted in MH's letter of Oct 26/00.
	Sep 21/01	MH files revised SEP Terms and Conditions as required by BO 143/01
	Nov 30/01	MH files Report #1 on SEP for period Dec 4/00 to Oct 31/01
	Mar 12/03	MH files Report #2 on SEP for period Nov 1/01 to Oct 31/02
	Mar 24/03	MH - by correspondence requests SEP be extended to Mar 31/05 on ex parte bases.
153/03	Oct 31/03	PUB approves request for extension of SEP to March 31, 2005 on an interim ex parte basis.
	Jan 29/04	As part of 2004 GRA (Appendix 9.2.2, Volume 3) MH requests SEP program be extended two more years to March 31, 2007. MH files Report #3 on SEP for period Nov 1/02 to Oct 31/03
101/04	Jul 28/04	PUB approves MH's application to extend Terms and Conditions of the SEP, as proposed and amended by MH, until March 31, 2007.
	May 17/05	MH files Report #4 on SEP for period Nov 1/03 to Oct 31/04
	Jan 23/06	MH files Report #5 on SEP for period Nov 1/04 to Oct 31/05
	Apr 20/06	MH applies to extend SEP Terms & Conditions to Mar 31/09
	Sep 7/06	PUB issues letter advising they are prepared to extend SEP to Oct 31/07. Also state their intention to review SEP in upcoming MH GRA.
	Sep 28/06	MH letter requests PUB reconsider their position and extend program, at minimum to October 31, 2008, noting customers need to plan for modifications or elimination of SEP and require minimum 12 months notice period.
173/06	Dec 21/06	PUB approves extension of SEP to the earlier of October 31, 2007 or an application to amend by MH. Advises MH to include a review of SEP in its GRA filing, due no later than August 1, 2007.
	Jan 12/07	MH files Report #6 on SEP for period Nov 1/05 to Oct 31/06

PUB Order	Date	PUB Board Findings & MH Applications and Reports Filings
	Aug 1/07	GRA filing - MH requests immediate approval to extend SEP to October 31/08 with final approval to extend the program to March 31/13 as it is expected hearing will not take place until early 2008.
136/07	Oct 26/07	PUB approves extension of SEP to April 30, 2009 on an interim basis, unless amended or extended by a further Order of the Board.
	Feb 5/08	MH files Report #7 on SEP for period Nov 1/06 to Oct 31/07
90/08	Jun 30/08	PUB approves extension of SEP until October 31, 2008, with the application for a further extension to March 31, 2013 to be dealt with in the subsequent Order.
116/08	Jul 29/08	PUB approves extension of the SEP to October 31, 2008; on condition annual reports continue to be provided. Also raises concern with MH's marketing practices that yield extremely low prices for off-peak exports. MH directed to file a report by January 15, 2009 evaluating SEP, including monthly historical data from 2000 to 2008.
	Sep 18/08	MH files application to vary BO 116/08, requesting PUB extend the date for filing of SEP report to February 28, 2009.
150/08	Nov 7/08	PUB agrees to vary deadline date for the SEP report to February 28, 2009 and approves extension of SEP to April 30, 2009. PUB indicates final approval of SEP to March 31, 2013 will follow once receipt and review of the February 28, 2009 SEP Annual Report is complete.
	Mar 4/09	MH files Report #8 on SEP for period Nov 1/07 to Oct 31/08
57/09	Apr 28/09	PUB approves SEP to March 31, 2013
	Mar 11/10	MH files Report #9 on SEP for period Nov 1/08 to Oct 31/09
	May 11/11	MH files Report #10 on SEP for period Nov 1/09 to Oct 31/10
	April 5/12	MH files an application to vary the Terms and Conditions as well as Report #11 on SEP for period Nov 1/10 to Oct 31/11
111/12	Aug 22/12	PUB approved extension of the SEP to March 31, 2014 to allow time for review of the MH's SEP application during MH's 2012/13 and 2013/14 GRA.
	Mar 11/13	MH files Report #12 on SEP for period Nov 1/11 to Oct 31/12
43/13	Apr 26/13	PUB approves SEP Option 1 amendment on an interim basis, to be reviewed at a Cost of Service/Time of Use hearing. PUB approves Option 2 and 3 as a permanent rate offering.
	Jan 31/14	MH files Report #13 on SEP for period Nov 1/12 to Oct 31/13
	Jan 23/15	MH files Report #14 on SEP for period Nov 1/13 to Oct 31/14
73/15	Jul 24/15	PUB will keep SEP Option 1 amendment interim approved until the review at a Cost of Service hearing. MH to file quarterly reports on factors influencing SEP pricing and include explanation of National Energy Board pricing.

Attachment 2 - PUB Approved Weekly SEP Rates

PUB APPROVED WEEKLY SEP RATES ¢ / kWh						
Week Beginning	General Service Medium			General Service Large 750 V to 30 kV		
	Peak	Shoulder	Off-Peak	Peak	Shoulder	Off-Peak
November 1, 2014	0.951	1.458	0.693	0.938	1.438	0.683
November 3, 2014	2.913	2.561	1.023	2.874	2.527	1.010
November 10, 2014	4.132	3.243	1.769	4.077	3.200	1.746
November 17, 2014	4.151	3.646	1.544	4.096	3.598	1.523
November 24, 2014	4.559	3.736	2.334	4.498	3.687	2.303
December 1, 2014	5.432	4.039	2.741	5.360	3.985	2.704
December 8, 2014	4.446	3.200	2.130	4.387	3.158	2.102
December 15, 2014	4.250	3.232	2.315	4.193	3.189	2.284
December 22, 2014	4.133	3.157	2.382	4.078	3.115	2.351
December 29, 2014	4.097	3.514	2.519	4.043	3.467	2.485
January 5, 2015	4.414	3.680	2.803	4.356	3.631	2.765
January 12, 2015	3.994	3.077	2.802	3.941	3.036	2.765
January 19, 2015	4.382	3.094	2.323	4.324	3.053	2.292
January 26, 2015	4.254	3.534	2.822	4.198	3.487	2.785
February 2, 2015	4.262	3.308	2.566	4.205	3.264	2.532
February 9, 2015	3.781	3.234	2.496	3.731	3.191	2.463
February 16, 2015	4.357	3.737	2.584	4.300	3.687	2.550
February 23, 2015	4.265	3.454	2.584	4.208	3.408	2.550
March 2, 2015	3.873	3.449	2.472	3.821	3.403	2.439
March 9, 2015	3.768	3.329	2.659	3.718	3.285	2.623
March 16, 2015	4.261	3.472	2.646	4.204	3.426	2.611
March 23, 2015	3.591	2.912	1.616	3.543	2.873	1.595
March 30, 2015	3.943	3.204	2.287	3.890	3.162	2.257
April 6, 2015	3.442	2.968	2.007	3.397	2.928	1.980
April 13, 2015	3.343	2.672	1.766	3.299	2.636	1.742
April 20, 2015	3.196	2.538	1.770	3.153	2.505	1.746
April 27, 2015	2.881	2.567	1.931	2.843	2.533	1.906
May 4, 2015	2.960	2.546	1.989	2.921	2.512	1.962
May 11, 2015	3.338	2.844	1.929	3.293	2.806	1.903
May 18, 2015	3.195	3.013	1.749	3.152	2.973	1.726
May 25, 2015	2.999	2.827	1.454	2.959	2.790	1.435
June 1, 2015	3.655	3.386	1.799	3.607	3.341	1.775
June 8, 2015	4.347	3.458	2.140	4.289	3.412	2.111
June 15, 2015	3.921	2.982	1.677	3.869	2.942	1.654

PUB APPROVED WEEKLY SEP RATES ¢ / kWh						
Week Beginning	General Service Medium			General Service Large 750 V to 30 kV		
	Peak	Shoulder	Off-Peak	Peak	Shoulder	Off-Peak
June 22, 2015	3.666	3.166	1.859	3.618	3.124	1.835
June 29, 2015	3.690	1.324	0.455	3.641	1.306	0.449
July 6, 2015	3.967	3.113	1.754	3.915	3.072	1.731
July 13, 2015	3.206	2.821	1.308	3.164	2.783	1.291
July 20, 2015	3.837	3.186	2.042	3.786	3.144	2.015
July 27, 2015	4.439	3.672	2.096	4.380	3.623	2.068
August 3, 2015	3.858	3.190	2.023	3.807	3.148	1.997
August 10, 2015	3.960	3.221	1.980	3.908	3.178	1.954
August 17, 2015	4.213	3.491	2.516	4.157	3.444	2.483
August 24, 2015	5.401	3.777	2.449	5.330	3.727	2.416
August 31, 2015	3.826	2.977	2.130	3.775	2.938	2.102
September 7, 2015	3.657	3.077	2.000	3.609	3.036	1.973
September 14, 2015	4.267	3.389	2.280	4.210	3.344	2.250
September 21, 2015	3.652	2.925	1.895	3.604	2.886	1.870
September 28, 2015	3.485	2.857	1.421	3.438	2.819	1.403
October 5, 2015	4.284	3.239	1.224	4.227	3.196	1.208
October 12, 2015	2.783	1.878	0.712	2.746	1.853	0.702
October 19, 2015	1.322	2.045	0.720	1.305	2.018	0.710
October 26, 2015	3.449	2.907	1.677	3.403	2.868	1.654
Average Rate	3.782	3.082	1.979	3.732	3.041	1.952
Maximum Rate	5.432	4.039	2.822	5.360	3.985	2.785
Minimum Rate	0.951	1.324	0.455	0.938	1.306	0.449
Class Rev/kWh	3.929	3.193	2.161	3.689	3.010	2.049

Attachment 3 - SEP Energy Supply Source

SEP Energy Supply Source (%) November 1, 2014 to October 31, 2015															
Week Of		Actual							Forecast						
		Imports			Exports			Avoided Spill	Imports			Exports			Avoided Spill
		Peak	Shoulder	Off-Peak	Peak	Shoulder	Off-Peak		Peak	Shoulder	Off-Peak	Peak	Shoulder	Off-Peak	
Nov 01/14	Peak	0	0	0	0	0	0	0	0	0	0	0	0	0	0
	Shoulder	0	0	0	0	50	0	50	0	0	0	0	100	0	0
	Off-Peak	0	0	0	0	0	0	100	0	0	0	0	0	0	100
Nov 03/14	Peak	0	0	0	100	0	0	0	0	0	0	100	0	0	0
	Shoulder	0	0	0	0	100	0	0	0	0	0	0	100	0	0
	Off-Peak	0	0	0	0	0	43	57	0	0	0	0	0	0	100
Nov 10/14	Peak	0	0	0	100	0	0	0	0	0	0	100	0	0	0
	Shoulder	0	0	0	0	100	0	0	0	0	0	0	100	0	0
	Off-Peak	0	0	0	0	0	100	0	0	0	0	0	0	100	0
Nov 17/14	Peak	0	0	0	100	0	0	0	0	0	0	100	0	0	0
	Shoulder	0	0	0	0	100	0	0	0	0	0	0	100	0	0
	Off-Peak	0	0	29	0	0	71	0	0	0	0	0	0	100	0
Nov 24/14	Peak	0	0	0	100	0	0	0	0	0	0	100	0	0	0
	Shoulder	0	0	56	0	44	0	0	0	0	0	0	100	0	0
	Off-Peak	0	0	57	0	0	43	0	0	0	0	0	0	100	0
Dec 01/14	Peak	0	0	0	100	0	0	0	0	0	0	100	0	0	0
	Shoulder	0	0	0	0	100	0	0	0	0	0	0	100	0	0
	Off-Peak	0	0	43	0	0	57	0	0	0	29	0	0	71	0
Dec 08/14	Peak	0	0	0	100	0	0	0	0	0	0	100	0	0	0
	Shoulder	0	0	0	0	100	0	0	0	0	0	0	100	0	0
	Off-Peak	0	0	0	0	0	100	0	0	0	0	0	0	100	0
Dec 15/14	Peak	0	0	0	100	0	0	0	0	0	0	100	0	0	0
	Shoulder	0	0	0	0	100	0	0	0	0	0	0	100	0	0
	Off-Peak	0	0	0	0	0	100	0	0	0	0	0	0	100	0
Dec 22/14	Peak	0	0	0	100	0	0	0	0	0	0	100	0	0	0
	Shoulder	0	0	0	0	100	0	0	0	0	0	0	100	0	0
	Off-Peak	0	0	0	0	0	100	0	0	0	0	0	0	100	0
Dec 29/14	Peak	0	0	0	100	0	0	0	0	0	0	100	0	0	0
	Shoulder	0	0	0	0	100	0	0	0	0	0	0	100	0	0
	Off-Peak	0	0	0	0	0	100	0	0	0	0	0	0	100	0

SEP Energy Supply Source (%)															
November 1, 2014 to October 31, 2015															
Week Of		Actual							Forecast						
		Imports			Exports			Avoided Spill	Imports			Exports			Avoided Spill
		Peak	Shoulder	Off-Peak	Peak	Shoulder	Off-Peak		Peak	Shoulder	Off-Peak	Peak	Shoulder	Off-Peak	
Jan 05/15	Peak	0	0	0	100	0	0	0	0	0	0	100	0	0	0
	Shoulder	0	0	0	0	100	0	0	0	0	0	0	100	0	0
	Off-Peak	0	0	0	0	0	100	0	0	0	0	0	0	100	0
Jan 12/15	Peak	0	0	0	100	0	0	0	0	0	0	100	0	0	0
	Shoulder	0	0	0	0	100	0	0	0	0	0	0	100	0	0
	Off-Peak	0	0	0	0	0	100	0	0	0	0	0	0	100	0
Jan 19/15	Peak	0	0	0	100	0	0	0	0	0	0	100	0	0	0
	Shoulder	0	0	0	0	100	0	0	0	0	0	0	100	0	0
	Off-Peak	0	0	0	0	0	100	0	0	0	0	0	0	100	0
Jan 26/15	Peak	0	0	0	100	0	0	0	0	0	0	100	0	0	0
	Shoulder	0	0	0	0	100	0	0	0	0	0	0	100	0	0
	Off-Peak	0	0	0	0	0	100	0	0	0	0	0	0	100	0
Feb 02/15	Peak	0	0	0	100	0	0	0	0	0	0	100	0	0	0
	Shoulder	0	0	0	0	100	0	0	0	0	0	0	100	0	0
	Off-Peak	0	0	0	0	0	100	0	0	0	0	0	0	100	0
Feb 09/15	Peak	0	0	0	100	0	0	0	0	0	0	100	0	0	0
	Shoulder	0	0	0	0	100	0	0	0	0	0	0	100	0	0
	Off-Peak	0	0	0	0	0	100	0	0	0	0	0	0	100	0
Feb 16/15	Peak	0	0	0	100	0	0	0	0	0	0	100	0	0	0
	Shoulder	0	0	0	0	100	0	0	0	0	0	0	100	0	0
	Off-Peak	0	0	0	0	0	100	0	0	0	0	0	0	100	0
Feb 23/15	Peak	0	0	0	100	0	0	0	0	0	0	100	0	0	0
	Shoulder	0	0	0	0	100	0	0	0	0	0	0	100	0	0
	Off-Peak	0	0	0	0	0	100	0	0	0	0	0	0	100	0
Mar 02/15	Peak	0	0	0	100	0	0	0	0	0	0	100	0	0	0
	Shoulder	0	0	0	0	100	0	0	0	0	0	0	100	0	0
	Off-Peak	0	0	0	0	0	100	0	0	0	0	0	0	100	0
Mar 09/15	Peak	0	0	0	100	0	0	0	0	0	0	100	0	0	0
	Shoulder	0	0	0	0	100	0	0	0	0	0	0	100	0	0
	Off-Peak	0	0	0	0	0	100	0	0	0	0	0	0	100	0
Mar 16/15	Peak	0	0	0	100	0	0	0	0	0	0	100	0	0	0
	Shoulder	0	0	0	0	100	0	0	0	0	0	0	100	0	0
	Off-Peak	0	0	0	0	0	100	0	0	0	0	0	0	100	0

SEP Energy Supply Source (%)															
November 1, 2014 to October 31, 2015															
Week Of		Actual							Forecast						
		Imports			Exports			Avoided Spill	Imports			Exports			Avoided Spill
		Peak	Shoulder	Off-Peak	Peak	Shoulder	Off-Peak		Peak	Shoulder	Off-Peak	Peak	Shoulder	Off-Peak	
Mar 23/15	Peak	0	0	0	100	0	0	0	0	0	0	100	0	0	0
	Shoulder	0	0	0	0	100	0	0	0	0	0	0	100	0	0
	Off-Peak	0	0	0	0	0	100	0	0	0	0	0	0	100	0
Mar 30/15	Peak	0	0	0	100	0	0	0	0	0	0	100	0	0	0
	Shoulder	0	0	0	0	100	0	0	0	0	0	0	100	0	0
	Off-Peak	0	0	0	0	0	100	0	0	0	0	0	0	100	0
Apr 06/15	Peak	0	0	0	100	0	0	0	0	0	0	100	0	0	0
	Shoulder	0	0	0	0	100	0	0	0	0	0	0	100	0	0
	Off-Peak	0	0	0	0	0	100	0	0	0	0	0	0	100	0
Apr 13/15	Peak	0	0	0	100	0	0	0	0	0	0	100	0	0	0
	Shoulder	0	0	0	0	100	0	0	0	0	0	0	100	0	0
	Off-Peak	0	0	0	0	0	100	0	0	0	0	0	0	100	0
Apr 20/15	Peak	0	0	0	100	0	0	0	0	0	0	100	0	0	0
	Shoulder	0	0	0	0	100	0	0	0	0	0	0	100	0	0
	Off-Peak	0	0	0	0	0	100	0	0	0	0	0	0	100	0
Apr 27/15	Peak	0	0	0	100	0	0	0	0	0	0	100	0	0	0
	Shoulder	0	0	0	0	100	0	0	0	0	0	0	100	0	0
	Off-Peak	0	0	0	0	0	100	0	0	0	0	0	0	100	0
May 04/15	Peak	0	0	0	100	0	0	0	0	0	0	100	0	0	0
	Shoulder	0	0	0	0	100	0	0	0	0	0	0	100	0	0
	Off-Peak	0	0	0	0	0	100	0	0	0	0	0	0	100	0
May 11/15	Peak	0	0	0	100	0	0	0	0	0	0	100	0	0	0
	Shoulder	0	0	0	0	100	0	0	0	0	0	0	100	0	0
	Off-Peak	0	0	0	0	0	100	0	0	0	0	0	0	100	0
May 18/15	Peak	0	0	0	100	0	0	0	0	0	0	100	0	0	0
	Shoulder	0	0	0	0	100	0	0	0	0	0	0	100	0	0
	Off-Peak	0	0	0	0	0	100	0	0	0	0	0	0	100	0
May 25/15	Peak	0	0	0	100	0	0	0	0	0	0	100	0	0	0
	Shoulder	0	0	0	0	100	0	0	0	0	0	0	100	0	0
	Off-Peak	0	0	0	0	0	100	0	0	0	0	0	0	100	0
Jun 01/15	Peak	0	0	0	100	0	0	0	0	0	0	100	0	0	0
	Shoulder	0	0	0	0	100	0	0	0	0	0	0	100	0	0
	Off-Peak	0	0	0	0	0	100	0	0	0	0	0	0	100	0

SEP Energy Supply Source (%)															
November 1, 2014 to October 31, 2015															
Week Of		Actual							Forecast						
		Imports			Exports			Avoided Spill	Imports			Exports			Avoided Spill
		Peak	Shoulder	Off-Peak	Peak	Shoulder	Off-Peak		Peak	Shoulder	Off-Peak	Peak	Shoulder	Off-Peak	
Jun 08/15	Peak	0	0	0	100	0	0	0	0	0	0	100	0	0	0
	Shoulder	0	0	0	0	100	0	0	0	0	0	0	100	0	0
	Off-Peak	0	0	0	0	0	100	0	0	0	0	0	0	100	0
Jun 15/15	Peak	0	0	0	100	0	0	0	0	0	0	100	0	0	0
	Shoulder	0	0	0	0	100	0	0	0	0	0	0	100	0	0
	Off-Peak	0	0	0	0	0	100	0	0	0	0	0	0	100	0
Jun 22/15	Peak	0	0	0	100	0	0	0	0	0	0	100	0	0	0
	Shoulder	0	0	0	0	100	0	0	0	0	0	0	100	0	0
	Off-Peak	0	0	0	0	0	100	0	0	0	0	0	0	100	0
Jun 29/15	Peak	0	0	0	100	0	0	0	0	0	0	100	0	0	0
	Shoulder	0	0	0	0	100	0	0	0	0	0	0	100	0	100
	Off-Peak	0	0	0	0	0	100	0	0	0	0	0	0	0	100
Jul 06/15	Peak	0	0	0	100	0	0	0	0	0	0	100	0	0	0
	Shoulder	0	0	0	0	100	0	0	0	0	0	0	100	0	0
	Off-Peak	0	0	0	0	0	100	0	0	0	0	0	0	100	0
Jul 13/15	Peak	0	0	0	100	0	0	0	0	0	0	100	0	0	0
	Shoulder	0	0	0	0	100	0	0	0	0	0	0	100	0	0
	Off-Peak	0	0	0	0	0	100	0	0	0	0	0	0	100	0
Jul 20/15	Peak	0	0	0	100	0	0	0	0	0	0	100	0	0	0
	Shoulder	0	0	0	0	100	0	0	0	0	0	0	100	0	0
	Off-Peak	0	0	0	0	0	100	0	0	0	0	0	0	100	0
Jul 27/15	Peak	0	0	0	100	0	0	0	0	0	0	100	0	0	0
	Shoulder	0	0	0	0	100	0	0	0	0	0	0	100	0	0
	Off-Peak	0	0	0	0	0	100	0	0	0	0	0	0	100	0
Aug 03/15	Peak	0	0	0	100	0	0	0	0	0	0	100	0	0	0
	Shoulder	0	0	0	0	100	0	0	0	0	0	0	100	0	0
	Off-Peak	0	0	0	0	0	100	0	0	0	0	0	0	100	0
Aug 10/15	Peak	0	0	0	100	0	0	0	0	0	0	100	0	0	0
	Shoulder	0	0	0	0	100	0	0	0	0	0	0	100	0	0
	Off-Peak	0	0	0	0	0	100	0	0	0	0	0	0	100	0
Aug 17/15	Peak	0	0	0	100	0	0	0	0	0	0	100	0	0	0
	Shoulder	0	0	0	0	100	0	0	0	0	0	0	100	0	0
	Off-Peak	0	0	0	0	0	100	0	0	0	0	0	0	100	0

SEP Energy Supply Source (%)															
November 1, 2014 to October 31, 2015															
Week Of		Actual							Forecast						
		Imports			Exports			Avoided Spill	Imports			Exports			Avoided Spill
		Peak	Shoulder	Off-Peak	Peak	Shoulder	Off-Peak		Peak	Shoulder	Off-Peak	Peak	Shoulder	Off-Peak	
Aug 24/15	Peak	0	0	0	100	0	0	0	0	0	0	100	0	0	0
	Shoulder	0	0	0	0	100	0	0	0	0	0	0	100	0	0
	Off-Peak	0	0	0	0	0	100	0	0	0	0	0	0	100	0
Aug 31/15	Peak	0	0	0	100	0	0	0	0	0	0	100	0	0	0
	Shoulder	0	0	0	0	100	0	0	0	0	0	0	100	0	0
	Off-Peak	0	0	0	0	0	100	0	0	0	0	0	0	100	0
Sep 07/15	Peak	0	0	0	100	0	0	0	0	0	0	100	0	0	0
	Shoulder	0	0	0	0	100	0	0	0	0	0	0	100	0	0
	Off-Peak	0	0	0	0	0	100	0	0	0	0	0	0	100	0
Sep 14/15	Peak	0	0	0	100	0	0	0	0	0	0	100	0	0	0
	Shoulder	0	0	0	0	100	0	0	0	0	0	0	100	0	0
	Off-Peak	0	0	0	0	0	100	0	0	0	0	0	0	100	0
Sep 21/15	Peak	0	0	0	100	0	0	0	0	0	0	100	0	0	0
	Shoulder	0	0	0	0	100	0	0	0	0	0	0	100	0	0
	Off-Peak	0	0	0	0	0	71	29	0	0	0	0	0	100	0
Sep 28/15	Peak	0	0	0	60	0	0	40	0	0	0	100	0	0	0
	Shoulder	0	0	0	0	56	0	44	0	0	0	0	100	0	0
	Off-Peak	0	0	0	0	0	0	100	0	0	0	0	0	100	0
Oct 05/15	Peak	0	0	0	100	0	0	0	0	0	0	100	0	0	0
	Shoulder	0	0	0	0	100	0	0	0	0	0	0	100	0	0
	Off-Peak	0	0	0	0	0	0	100	0	0	0	0	0	0	100
Oct 12/15	Peak	0	0	0	25	0	0	75	0	0	0	75	0	0	25
	Shoulder	0	0	0	0	40	0	60	0	0	0	0	50	0	50
	Off-Peak	0	0	0	0	0	0	100	0	0	0	0	0	0	100
Oct 19/15	Peak	0	0	0	20	0	0	80	0	0	0	20	0	0	80
	Shoulder	0	0	0	0	22	0	78	0	0	0	0	56	0	44
	Off-Peak	0	0	0	0	0	29	71	0	0	0	0	0	0	100
Oct 26/15	Peak	0	0	0	80	0	0	20	0	0	0	100	0	0	0
	Shoulder	0	0	0	0	43	0	57	0	0	0	0	100	0	0
	Off-Peak	0	0	0	0	0	0	100	0	0	0	0	0	100	0
Overall Avg		0%	0	1	31	31	28	7	0	0	0	32	32	29	6

Attachment 4 - Total Energy Sales in MWh

**SURPLUS ENERGY PROGRAM
TOTAL ENERGY SALES IN MWH**

Week Beginning	Peak	Shoulder	Off-Peak	Total
November 1, 2014	0*	112	61	173
November 3, 2014	158	285	200	643
November 10, 2014	148	359	244	752
November 17, 2014	197	347	257	801
November 24, 2014	209	375	278	863
December 1, 2014	203	338	266	807
December 8, 2014	173	293	234	699
December 15, 2014	184	306	248	738
December 22, 2014	99	414	248	761
December 29, 2014	174	442	300	915
January 5, 2015	219	379	300	898
January 12, 2015	203	343	277	824
January 19, 2015	154	293	228	675
January 26, 2015	191	362	275	828
February 2, 2015	222	374	301	898
February 9, 2015	225	396	311	933
February 16, 2015	189	464	330	982
February 23, 2015	217	369	301	887
March 2, 2015	211	343	289	842
March 9, 2015	156	242	211	609
March 16, 2015	143	250	208	601
March 23, 2015	152	256	218	626
March 30, 2015	119	312	229	660
April 6, 2015	104	229	187	520
April 13, 2015	115	195	153	463
April 20, 2015	135	216	187	537
April 27, 2015	104	179	144	426
May 4, 2015	121	216	160	496
May 11, 2015	99	191	144	435
May 18, 2015	75	178	131	384
May 25, 2015	90	154	118	362
June 1, 2015	78	120	88	286
June 8, 2015	70	109	70	250
June 15, 2015	53	75	50	178

**SURPLUS ENERGY PROGRAM
TOTAL ENERGY SALES IN MWH**

Week Beginning	Peak	Shoulder	Off-Peak	Total
June 22, 2015	42	60	36	138
June 29, 2015	26	62	30	118
July 6, 2015	43	60	36	138
July 13, 2015	38	53	33	124
July 20, 2015	40	55	32	128
July 27, 2015	42	63	32	138
August 3, 2015	38	65	39	142
August 10, 2015	39	57	31	127
August 17, 2015	39	62	38	138
August 24, 2015	40	57	35	132
August 31, 2015	25	34	17	76
September 7, 2015	38	59	37	134
September 14, 2015	51	78	50	180
September 21, 2015	57	85	55	197
September 28, 2015	69	114	74	257
October 5, 2015	83	124	82	289
October 12, 2015	93	195	117	404
October 19, 2015	128	225	152	506
October 26, 2015	130	183	134	446
Total**	6,052	11,208	8,304	25,564

* November 1st and 2nd, 2014 were Saturday and Sunday and were off-peak and shoulder only.

** Totals may not add up due to rounding.

Attachment 5 - Energy Charge Revenue

**SURPLUS ENERGY PROGRAM
ENERGY CHARGE REVENUE**

Week Beginning	Peak	Shoulder	Off-Peak	Total
November 1, 2014	\$0 *	\$1,626	\$422	\$2,048
November 3, 2014	\$4,602	\$7,290	\$2,041	\$13,933
November 10, 2014	\$6,126	\$11,622	\$4,322	\$22,070
November 17, 2014	\$8,182	\$12,628	\$3,958	\$24,768
November 24, 2014	\$9,531	\$14,000	\$6,495	\$30,026
December 1, 2014	\$11,027	\$13,627	\$7,277	\$31,931
December 8, 2014	\$7,668	\$9,357	\$4,981	\$22,006
December 15, 2014	\$7,815	\$9,896	\$5,740	\$23,451
December 22, 2014	\$4,072	\$13,076	\$5,913	\$23,061
December 29, 2014	\$7,126	\$15,516	\$7,541	\$30,182
January 5, 2015	\$9,660	\$13,926	\$8,415	\$32,000
January 12, 2015	\$8,120	\$10,563	\$7,753	\$26,436
January 19, 2015	\$6,755	\$9,074	\$5,289	\$21,118
January 26, 2015	\$8,123	\$12,792	\$7,758	\$28,672
February 2, 2015	\$9,467	\$12,382	\$7,722	\$29,571
February 9, 2015	\$8,510	\$12,819	\$7,758	\$29,087
February 16, 2015	\$8,217	\$17,326	\$8,516	\$34,059
February 23, 2015	\$9,267	\$12,724	\$7,780	\$29,772
March 2, 2015	\$8,151	\$11,831	\$7,137	\$27,119
March 9, 2015	\$5,880	\$8,043	\$5,618	\$19,541
March 16, 2015	\$6,109	\$8,667	\$5,509	\$20,285
March 23, 2015	\$5,473	\$7,463	\$3,516	\$16,452
March 30, 2015	\$4,698	\$9,989	\$5,227	\$19,913
April 6, 2015	\$3,564	\$6,787	\$3,756	\$14,107
April 13, 2015	\$3,843	\$5,214	\$2,696	\$11,753
April 20, 2015	\$4,304	\$5,470	\$3,300	\$13,074
April 27, 2015	\$2,991	\$4,577	\$2,772	\$10,341
May 4, 2015	\$3,574	\$5,484	\$3,172	\$12,230
May 11, 2015	\$3,308	\$5,432	\$2,784	\$11,525
May 18, 2015	\$2,403	\$5,346	\$2,291	\$10,039
May 25, 2015	\$2,700	\$4,335	\$1,720	\$8,755
June 1, 2015	\$2,832	\$4,039	\$1,587	\$8,458
June 8, 2015	\$3,043	\$3,770	\$1,496	\$8,309
June 15, 2015	\$2,048	\$2,219	\$843	\$5,110

**SURPLUS ENERGY PROGRAM
ENERGY CHARGE REVENUE**

Week Beginning	Peak	Shoulder	Off-Peak	Total
June 22, 2015	\$1,533	\$1,875	\$668	\$4,077
June 29, 2015	\$959	\$813	\$135	\$1,908
July 6, 2015	\$1,678	\$1,860	\$622	\$4,161
July 13, 2015	\$1,214	\$1,491	\$425	\$3,130
July 20, 2015	\$1,532	\$1,738	\$662	\$3,932
July 27, 2015	\$1,867	\$2,315	\$676	\$4,858
August 3, 2015	\$1,452	\$2,076	\$787	\$4,315
August 10, 2015	\$1,513	\$1,831	\$621	\$3,965
August 17, 2015	\$1,627	\$2,145	\$942	\$4,713
August 24, 2015	\$2,152	\$2,153	\$848	\$5,153
August 31, 2015	\$951	\$1,001	\$369	\$2,322
September 7, 2015	\$1,370	\$1,816	\$734	\$3,919
September 14, 2015	\$2,173	\$2,649	\$1,133	\$5,955
September 21, 2015	\$2,057	\$2,491	\$1,043	\$5,591
September 28, 2015	\$2,377	\$3,254	\$1,050	\$6,680
October 5, 2015	\$3,524	\$4,012	\$1,000	\$8,536
October 12, 2015	\$2,566	\$3,656	\$831	\$7,054
October 19, 2015	\$1,692	\$4,601	\$1,095	\$7,387
October 26, 2015	\$4,456	\$5,315	\$2,238	\$12,009
Total**	\$235,884	\$356,001	\$178,981	\$770,866

* November 1st and 2nd, 2014 were Saturday and Sunday and were off-peak and shoulder only.

** Totals may not add up due to rounding.

Attachment 6 - Distribution Charge Revenue

**SURPLUS ENERGY PROGRAM
DISTRIBUTION CHARGE REVENUE**

Week Beginning	Peak	Shoulder	Off-Peak	Total
November 1, 2014	\$0 *	\$672	\$372	\$1,044
November 3, 2014	\$914	\$1,667	\$1,215	\$3,795
November 10, 2014	\$884	\$2,160	\$1,480	\$4,524
November 17, 2014	\$1,168	\$2,067	\$1,558	\$4,793
November 24, 2014	\$1,250	\$2,241	\$1,687	\$5,178
December 1, 2014	\$1,208	\$2,021	\$1,611	\$4,840
December 8, 2014	\$1,052	\$1,785	\$1,423	\$4,259
December 15, 2014	\$1,124	\$1,873	\$1,506	\$4,504
December 22, 2014	\$604	\$2,539	\$1,511	\$4,654
December 29, 2014	\$1,066	\$2,707	\$1,820	\$5,593
January 5, 2015	\$1,342	\$2,318	\$1,825	\$5,485
January 12, 2015	\$1,246	\$2,104	\$1,684	\$5,034
January 19, 2015	\$942	\$1,796	\$1,383	\$4,121
January 26, 2015	\$1,170	\$2,219	\$1,674	\$5,063
February 2, 2015	\$1,362	\$2,293	\$1,831	\$5,486
February 9, 2015	\$1,381	\$2,432	\$1,893	\$5,707
February 16, 2015	\$1,159	\$2,848	\$2,008	\$6,015
February 23, 2015	\$1,334	\$2,261	\$1,832	\$5,427
March 2, 2015	\$1,292	\$2,106	\$1,761	\$5,159
March 9, 2015	\$959	\$1,482	\$1,294	\$3,735
March 16, 2015	\$879	\$1,530	\$1,272	\$3,680
March 23, 2015	\$934	\$1,572	\$1,330	\$3,835
March 30, 2015	\$732	\$1,914	\$1,399	\$4,045
April 6, 2015	\$635	\$1,400	\$1,146	\$3,182
April 13, 2015	\$665	\$1,156	\$937	\$2,758
April 20, 2015	\$809	\$1,302	\$1,141	\$3,251
April 27, 2015	\$597	\$1,044	\$875	\$2,516
May 4, 2015	\$688	\$1,268	\$973	\$2,929
May 11, 2015	\$561	\$1,122	\$883	\$2,567
May 18, 2015	\$407	\$1,033	\$798	\$2,237
May 25, 2015	\$508	\$883	\$722	\$2,113
June 1, 2015	\$414	\$668	\$537	\$1,619
June 8, 2015	\$359	\$597	\$417	\$1,373
June 15, 2015	\$249	\$379	\$295	\$923

**SURPLUS ENERGY PROGRAM
DISTRIBUTION CHARGE REVENUE**

Week Beginning	Peak	Shoulder	Off-Peak	Total
June 22, 2015	\$189	\$294	\$206	\$689
June 29, 2015	\$123	\$311	\$171	\$605
July 6, 2015	\$190	\$295	\$203	\$688
July 13, 2015	\$178	\$279	\$188	\$645
July 20, 2015	\$185	\$273	\$183	\$641
July 27, 2015	\$191	\$318	\$183	\$692
August 3, 2015	\$170	\$335	\$222	\$727
August 10, 2015	\$174	\$282	\$171	\$627
August 17, 2015	\$182	\$324	\$210	\$716
August 24, 2015	\$177	\$286	\$190	\$654
August 31, 2015	\$103	\$145	\$82	\$329
September 7, 2015	\$180	\$305	\$204	\$689
September 14, 2015	\$252	\$419	\$284	\$955
September 21, 2015	\$280	\$455	\$321	\$1,056
September 28, 2015	\$342	\$619	\$431	\$1,393
October 5, 2015	\$441	\$685	\$477	\$1,604
October 12, 2015	\$503	\$1,132	\$699	\$2,334
October 19, 2015	\$714	\$1,313	\$917	\$2,945
October 26, 2015	\$733	\$1,048	\$802	\$2,583
Total**	\$35,199	\$66,578	\$50,238	\$152,015

* November 1st and 2nd, 2014 were Saturday and Sunday and were off-peak and shoulder only.

* Totals may not add up due to rounding.

Attachment 7 - SEP Energy Revenues vs. Value of Energy

**SURPLUS ENERGY PROGRAM
SEP ENERGY REVENUES VS COSTS**

Week Beginning	SEP Energy Sales (MWH)	SEP Sales (Energy Only)	Value of SEP Energy to MH	Total
November 1, 2014	173	\$2,048	\$2,209	(\$161)
November 3, 2014	643	\$13,933	\$18,187	(\$4,254)
November 10, 2014	752	\$22,070	\$25,747	(\$3,676)
November 17, 2014	801	\$24,768	\$26,992	(\$2,223)
November 24, 2014	863	\$30,026	\$26,002	\$4,024
December 1, 2014	807	\$31,931	\$27,615	\$4,317
December 8, 2014	699	\$22,006	\$22,198	(\$193)
December 15, 2014	738	\$23,451	\$25,978	(\$2,528)
December 22, 2014	761	\$23,061	\$20,305	\$2,756
December 29, 2014	915	\$30,182	\$25,429	\$4,753
January 5, 2015	898	\$32,000	\$30,604	\$1,397
January 12, 2015	824	\$26,436	\$25,558	\$878
January 19, 2015	675	\$21,118	\$17,834	\$3,284
January 26, 2015	828	\$28,672	\$22,656	\$6,016
February 2, 2015	898	\$29,571	\$27,056	\$2,515
February 9, 2015	933	\$29,087	\$26,929	\$2,158
February 16, 2015	982	\$34,059	\$39,825	(\$5,766)
February 23, 2015	887	\$29,772	\$36,747	(\$6,975)
March 2, 2015	842	\$27,119	\$28,445	(\$1,326)
March 9, 2015	609	\$19,541	\$13,354	\$6,187
March 16, 2015	601	\$20,285	\$15,913	\$4,372
March 23, 2015	626	\$16,452	\$17,518	(\$1,067)
March 30, 2015	660	\$19,913	\$14,310	\$5,603
April 6, 2015	520	\$14,107	\$12,149	\$1,958
April 13, 2015	463	\$11,753	\$11,325	\$428
April 20, 2015	537	\$13,074	\$12,774	\$300
April 27, 2015	426	\$10,341	\$10,854	(\$513)
May 4, 2015	496	\$12,230	\$11,797	\$433
May 11, 2015	435	\$11,525	\$7,547	\$3,978
May 18, 2015	384	\$10,039	\$8,942	\$1,098
May 25, 2015	362	\$8,755	\$8,678	\$77
June 1, 2015	286	\$8,458	\$6,270	\$2,187
June 8, 2015	250	\$8,309	\$7,086	\$1,223

**SURPLUS ENERGY PROGRAM
SEP ENERGY REVENUES VS COSTS**

Week Beginning	SEP Energy Sales (MWH)	SEP Sales (Energy Only)	Value of SEP Energy to MH	Total
June 15, 2015	178	\$5,110	\$4,243	\$867
June 22, 2015	138	\$4,077	\$3,817	\$260
June 29, 2015	118	\$1,908	\$3,291	(\$1,384)
July 6, 2015	138	\$4,161	\$3,759	\$401
July 13, 2015	124	\$3,130	\$4,640	(\$1,509)
July 20, 2015	128	\$3,932	\$4,354	(\$423)
July 27, 2015	138	\$4,858	\$4,795	\$63
August 3, 2015	142	\$4,315	\$4,554	(\$239)
August 10, 2015	127	\$3,965	\$5,107	(\$1,142)
August 17, 2015	138	\$4,713	\$3,494	\$1,219
August 24, 2015	132	\$5,153	\$3,482	\$1,670
August 31, 2015	76	\$2,322	\$3,087	(\$765)
September 7, 2015	134	\$3,919	\$3,627	\$292
September 14, 2015	180	\$5,955	\$4,704	\$1,251
September 21, 2015	197	\$5,591	\$5,658	(\$68)
September 28, 2015	257	\$6,680	\$5,715	\$965
October 5, 2015	289	\$8,536	\$5,858	\$2,679
October 12, 2015	404	\$7,054	\$6,936	\$118
October 19, 2015	506	\$7,387	\$6,776	\$611
October 26, 2015	446	\$12,009	\$8,168	\$3,841
Total**	25,564	\$770,866	\$730,898	\$39,968

* Sales figures are based on the revenue received from the Energy Charge only. They do not include revenues from Distribution and Basic Charges.

** Totals may not add up due to rounding.